

THE HUB The Rotary Club of Park Cities

www.parkcitiesrotary.org



Leaders united worldwide to provide humanitarian service, encourage high ethical standards in all vocations, and help build goodwill and peace in the world.

Service
Above
Self

May 7, 2010

TODAY'S PROGRAM

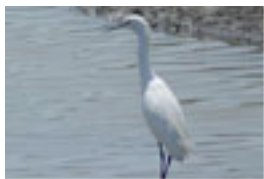
Program Chair of the Day: Andy Carothers



Wilson Sands and John DeFillipo John Bunker Sands Wetland Center

A twenty minute drive south-east from Downtown Dallas takes you to a crossing on the East Fork of the Trinity River and the country's largest water reuse project using detention and wetland plants.

Since its passage in 1972, the Clean Water Act has gradually changed the economics of impacting projects effecting wetland habitats, spurred an industry, and forced these projects to consider alternatives. All of this playing out on a once active ranch where cattlemen tried to tame this flood prone land.



Wilson Sands was born and raised in Dallas and received a B.A. from Baylor University in 1993. He helped successfully build several local business enterprises in the areas of IT service management, automotive service centers, and industrial real estate.

Wilson began work on a new enterprise with the co-founding of Wetlands Management in 2008 where he is responsible for mitigation credit sales and site development. Wetlands Management is the sponsor and operator of mitigation banks in North Texas.

John DeFillipo, Director of the John Bunker Sands Wetland Center, is an engaging naturalist with over fourteen years of experience blending ecological concepts with business insights. After re-



ceiving his BS in Business Administration in 1992 from Mississippi University for Women, he pursued a career as a naturalist with two nature centers in the southeast; Camp McDowell Environmental Education Center in Alabama and Crow's Neck Environmental Education Center in Mississippi.

In 2002, John joined the Mississippi Museum of Natural Science as an Outreach Educator where he presented endangered species programs that focused on protecting Mississippi's diverse ecosystems. While living in Mississippi, John served as the president of the Mississippi Environmental Education Alliance and was awarded environmental educator of the year in 2008.

Most recently, John accepted the Lead Natural Science Educator position with the Dallas Museum of Nature and Science in 2008. Currently, John is a member of the North Texas Master Naturalist, the Texas Association of Environmental Education, and the Association of Nature Center Administrators.

COMMITTEE TIME



Dentistry With A Heart Creates Many Smiles

The final figures are in from the Dentistry with a Heart day on Fri, Feb 12. Thanks go to Dr. **M. Rainwater** and Dr. **M. Alexander**.

- 14 offices and 7 locations were coordinated
- 611 patients were seen
- \$442,563.00 of dentistry were delivered to patients of low income families
- 312 volunteers were organized, including
- 87 Rotarian volunteers representing 5 clubs
- All 14 offices had Rotary financial and volunteer connections.

RCPC Takes Aim at the Sporting Clays Challenge Benefitting Buckner International

The Sporting Clay Challenge on Sat, Apr 24, resulted in about \$55,000 to support the work of Buckner International. The RCPC volunteers were headed



by **Jon Petersen** and **Brad Rejebian**. A good time was had by shooters and volunteers alike. See a video of the event at www.bucknerevents.org

Doug Means represented RCPC as a delegate to the Tejas Multi-District Conference. Activities included a private tour of Morgan's Wonderland, the world's first ultra accessible family fun park. More high lights next week.



Chartered in 1948

LAST WEEK

Presiding: **Rick Amsberry**
 Invocation: **Charlotte Kroeker**
 Pledge/Song Leader: **Charlotte Kroeker**

Introductions: **Bob Patton**
 Four Way Test: **Brad Rejebian**
 Photographer: **Barb Jeffries**
 Chair of the Day: **Nolan Duck**
 Speaker: **Dr. Russell Dilday**
 Program: **Civil Dialogue in a World of Extremes**



President-Elect **Rick Amsberry** called the meeting to order while President **Phillip** represented the club at the Multi-District Conference in San Antonio.

Charlotte Kroeker combined the invocation and the song by leading an African-American spiritual, "Guide My Feet," then led the Pledge of Allegiance



and "My Country 'Tis of Thee." **Dax Seale** introduced The Hub and the web advertisers of the day, and asked for advertisers to consider renewing.

Mike Kelley reported on our own RCPC Foundation and announced that he will be sending out "reminders" by email. **Bob Patton** introduced our visitors and guests, including long-distance visitors from Des Moines, IA, and Columbia, SC. **Margaret Collins** announced ten attendance awards, culminated by **Charlie Bond** with twenty-five years.



PP **Greg Pape** reported

that to date eighty-three RC PC members have contributed to the RI Foundation. He introduced



PDG **C.C. Collie** who recognized his daughter-in-law Joyce Collie as

a Paul Harris Fellow.

Herb Burkman gave us our first introduction to our Youth Exchange student Kimberly Uymatiao from The Philippines. Host families are needed for her visit.



Nolan Duck introduced our speaker today, Dr. Russell Dilday.

Dr. Dilday asked what-ever happened to the statement "I respectfully disagree"? Incivility is dangerous, particularly when it can travel by computer. He said that the Latin word *civitas* actually means polite political behavior or statesmanship. Civility is kindness; it is what Abraham Lincoln meant with his phrase "with malice toward none and charity for all." Civility is what is meant in the Declaration of Independence by the phrase, "decent respect for the opinions of mankind." He said that to be civil does not mean that one has to give up one's convictions, but to be willing to listen, and that it is okay to use strong persuasive language, but not to be rude. He quoted Eric Hoffer that "rudeness is a weak man's imitation of strength." Civility is not just good politics, it is also an ethical and moral duty. It is comparable to the Greek word *agape* which is an openness and interest in the welfare of others. It also encompasses the concepts of faith, hope, and charity. It is something you choose to do; like charity, civility is not passive.



May 7, 2010 - Page 2

THE HUB

Newsletter of the
 Rotary Club of Park Cities (Dallas)
 Betty Dawson, *Editor*

Shutterbug Committee
 Fred Speno, *Chair*

Bulletin/Internet Advertising
 Dax Seale, *Chair*



OFFICERS and DIRECTORS 2009-2010

Phillip Bankhead, *President*
Rick Amsberry, *President Elect*

Jim Mills, *Vice President*

Pam Carvey, *Treasurer*

Jennifer Zuniga, *Secretary*

Mike Kelley, *Sgt. at Arms*

Eric Heitkamp, *Club Service I*
Charlotte Hudgin, *Club Service II*

Jack Kearney,
Community Service I

Fred Brown,
Community Service II

Marshall Weaver,
Vocational Service

Bud Naifeh, *International Service*

Rosemary Domecki, *At Large*

Ley Waggoner,
Immediate Past President

Ben Young, *Parliamentarian*

Jim Wolf, *Historian*

Laurie Aldredge,
Club Administrator

6704 Snider Plaza
 Dallas, Texas 75205

Office Phone: 214-739-4170

Office Fax: 214/363-6980

www.parkcitiesrotary.org

Email: club@parkcitiesrotary.org



John Kenny, *Scotland*
President, Rotary International
 www.rotary.org

Dave McSpadden, *Waxahachie*
Governor, District 5810
 www.rotary5810.org

EVENTS CALENDAR

May						
S	M	T	W	Th	F	S
2	M	M	M _V	M _{In}	Mtg _{Web}	
9	M	M	M _{FF}	M _{Cn}	Mtg	
16	M _{Mc}	M	M _{BD}	M _{In}	Mtg	
23	M	M	M	M _{In}	Mtg	
30						

Get involved!

AED = Defibrillator Training
BI = Blood Drive
BD = Board of Dirs. Mtg. 7 am
 LaMadeleine, 75 & Mockingbird
CM = Circles of Success
 Mentoring See T. Gomes
Cn = PCR Connect Event
CP = ChildsPlay Work Mtg
D = District 5810 Event
DH = Dentistry with a Heart
FR = Family of Rotary Event
F = Fellowship Event
FF = RCPC Foundation Fund
 Mtg. See Rick Amsberry

In- Interact at Hillcrest H.S.
 8 am. See Tracy Gomes
M = Meals on Wheels (Different teams on each day)
 See Charles Delphenis
Mc = Ronald McDonald
 House-See Jina McDaniel
NM = New Member Event
Pr = Program Committee Mtg
Reading and Radio Resources
 See Hal Copeland
SpE = Special Service Event
VV = Vet to Vet - See Bob Dill
Web = Web-lite after noon mtg
Blue = Activities on own schedule

UPCOMING PROGRAMS

May 7, 2010 - Page 3



May 14 Rotary Day
New Member Speeches



May 28 Memorial Day Program
Admiral Jim Lair



May 21 Jill A. Jordan, Asst. City Mgr
Trinity River Corridor Update



June 4 Dennis McQuiston
Capitalism - Cause or Solution

CLUB ANNOUNCEMENTS

Sign up at
www.parkcitiesrotary.org

Web for Leaders: Creating an Event on the RCPC website,
Today immediately after the noon meeting. See Dennis Harrison.

RCPC Foundation, Tues, May 11, 3:30pm at Communities
Foundation of Texas, 5500 Caruth Haven. Open to ALL members.

Host Families are needed for Youth Exchange Student.
See Herb Burkman for dates and details.

EREY \$100 from Every Rotarian Every Year to the Rotary Foundation



July 4th Parade Hotline is up and running - 972-385-7755 or
<http://july4.parkcitiesrotary.org/>



End Polio Now Night at the Ballpark, Sat, July 24, Angels vs
Rangers - www.texasrangers.com/district5790 (password: rangers)

ROTARY CONNECTED

Linked in Interesting new thread: 2010 Rotary International Council on Legislation: The first posting is the agenda for the 2010 Council on Legislation for those who would like to become involved in discussion on the issues that will be decided this year.

Twitter Tweet of the Week: New Generations is added by the Council as the fifth Avenue of Service.
<http://cot.ag/9RF8T1>

Facebook Interesting new thread: Rotarians have helped hundreds of children from Belize receive orthopedic care through a program now in its fourth decade. Rotary.org
YouTube RI has its own channel on YouTube offering a growing collection of videos and psas.

flickr Check out or add to RI's Flickr group often, www.flickr.com/groups/familyofrotary/

THOUGHTS ON . . .

Rivers

In rivers and bad governments, the lightest things swim at the top.

~ Benjamin Franklin

Rivers know this: there is no hurry. We shall get there some day.

~ Winnie the Pooh

You could not step twice into the same rivers; for other waters are ever flowing on to you.

~ Heraclitus

Sometimes, if you stand on the bottom rail of a bridge and lean over to watch the river slipping slowly away beneath you, you will suddenly know everything there is to be known.

~ Winnie the Pooh

FOUNDATION FUNDERS

Our Funders for Next Week are

Elizabeth Hart
Bob Heard
Eric Heitkamp
Joyce Hendrickson

FAMILY of ROTARY

Host Family or Families are needed for Youth Exchange Student

Getting to know Kimberly:

The Rotary Club of Dumaguete City-South in The Philippines is endorsing Youth Exchange Student Kimberly Uymatiao. She is sixteen and in the fourth year of high school. She attends at a boarding school on a dif-

ferent island than where her home is because her parents "like the standards of teaching in Chinese and English." She says "the school has a strict disciplinary program with regard to students to prepare them to be independent and law-abiding citizens."



THEY PROFIT MOST WHO LAUGH BEST

The Politicians Lament

Ten politicians trying to align; only one did so – and then there were nine.

Nine politicians entered a debate; but one spoke his heart out – then there were eight.

Eight politicians saw the road to Heaven; one tried to follow it – then there were seven.

Seven politicians trying hard to mix; one got all mixed up – and then there were six.

Six politicians eager to survive; one ate a rubber chicken – and then there were five.

Five politicians found they had the floor; one spoke for all of them – then there were four.

Four politicians sitting down to tea; one choked

on a principle – and then there were three.

Three politicians looking at the view; one saw a policy – and then there were two.

Two politicians politically outrun; one lost credibility – and then there was one.

One politician found nothing could be done, so he took the Bridge to Nowhere – and then there none.

Happy Birthday

Kendall Laughlin 5.9
Barbara Barney 5.12
Linda Tunnell 5.13

We gratefully acknowledge
ASTRO-GRAPHICS
for the partial funding of
the weekly printing of *The Hub*

CNC HOME CARE
Established in 1994
Assisted Aging • Home Management • Social Activities

CHRISTIAN F. CLAUSEN, MBA, CMC, RG-NGF
ADMINISTRATOR

8111 Preston Road, Suite 415
Dallas, Texas 75225

(214) 540-5942

FUGRO

FUGRO CONSULTANTS, INC.

2880 Virgo Lane
Dallas, Texas 75229
Phone: 972-484-8301
Fax: 972-620-7328
Email: rpatton@fugro.com

ROBERT S. PATTON, P.E.
Senior Consultant

Morgan Buildings & Spas, Inc.

From Our Factory to You
for Over 40 Years

ALAN WINN
Corporate Counsel

2800 McCree Road
Garland, TX 75041
P.O. Box 402088
Garland, TX 75048
(800) 950-0321
Direct (972) 864-7328
FAX (972) 864-7312
e-mail: alan@morganusa.com

ELLIOTT'S HARDWARE

Making hardware easy.

DALLAS Maple at Motor 214-634-9900
PLANO Coit at W. Park 972-312-0700
MESQUITE Kearney at Galloway 214-324-5087

NOW OPEN WEEKDAYS 8-8 • SATURDAY 9-5
Visit anytime at elliottshardware.com

SLEEPER SEWELL

WILLIAM E. SLEEPER, CPCU, CLU, ARM, AAI
VICE CHAIRMAN

direct: 972.419.7507
bill.sleeper@sleepersewell.com

Sleeper Sewell Insurance Services, Inc.
A division of ANBTX Insurance Services, Inc.
main: 972.419.7500 fax: 972.419.7555
12400 Coit Road, Suite 1100
Dallas, Texas 75251-2039
www.sleepersewell.com

RLG

RAYMOND L. GOODSON JR., INC.
CONSULTING ENGINEERS

David M. Goodson, P.E.
Stuart A. Markussen, P.E., R.P.L.S.

Suite 300, LB 17 • 5445 La Sierra • Dallas, Texas 75231-4138
214/739-8100 • Fax 214/739-6354

SPARKMAN/HILLCREST

FUNERAL HOME • CEMETERY • FLORAL SHOP

ROGER DIEBEL
FAMILY SERVICE

7405 W. NORTHWEST HIGHWAY
DALLAS, TEXAS 75225
TELEPHONE: 214-363-5401
FAX: 214-368-2388
CELL: 972-800-9095
EMAIL: roger.diebel@sci-us.com

Dignity

Rob Banes, CPA

WAGNER, EUBANK & NICHOLS, L.L.P.
Certified Public Accountants

The Berkshire at Preston Center
5950 Berkshire Lane, Suite 300
Dallas, Texas 75225
Ph: (214) 692-6800
Fax: (214) 692-7844
rbanes@wencpa.com

Park Cities Dental Associates

3110 Webb Avenue
Suite 300
Dallas, Texas 75205
214-528-7870

Roy S. Washburn, D.D.S., F.A.G.D.
Philip E. Lindley, D.D.S.

JAMES V. ROBERTS
BOARD CERTIFIED - ESTATE PLANNING AND PROBATE LAW
TEXAS BOARD OF LEGAL SPECIALIZATION

2200 ONE GALLERIA TOWER
13355 NOEL RD., L.B., 48
DALLAS, TEXAS 75240-1518
TELEPHONE: (214) 528-2822
FAX: (214) 528-3110
JIM@JAMESVROBERTS.COM

GPM GLAST, PHILLIPS & MURRAY
ATTORNEYS AND COUNSELORS

WILLIAM L. SIEGEL
RICHARD BARRETT-CUETARA
DREW N. BAGOT
ATTORNEYS AT LAW

COWLES & THOMPSON

Attorneys & Counselors

901 Main Street, Suite 3900
Dallas, Texas 75202
TEL 214.672.2000 FAX 214.672.2020

J. Marshall Weaver

CANNON DEVELOPMENT, Z

7557 Rambler Road, Suite 721
Dallas, Texas 75231
(972) 239-1060
Fax (972) 934-8694
mweaver@cannoninc.net

We Gratefully Acknowledge

ELLIOTT'S HARDWARE

Making hardware easy.

DALLAS Maple at Motor 214-634-9900
PLANO Coit at W. Park 972-312-0700
MESQUITE Kearney at Galloway 214-324-5087

NOW OPEN WEEKDAYS 8-8 • SATURDAY 9-5
Visit anytime at elliottshardware.com

for Supporting The Hub

NEATHERY ELECTRIC, INC.

Security Cameras
Home Theater
Computer/Data Services
Electrical & Lighting

www.neatheryelectric.com

Bill Neathery **214-691-8844**

UP&OPEN IMAGING™
The Stand-Up™ MRI

1360 W. Campbell Rd., Suite 122 • Richardson, TX 75080
Ph: 972-479-9500 • Fax 972-479-9544

4144 N. Central Expressway, Suite 160 • Dallas, TX 75204
Ph: 214-828-1115 • 214-828-9590
www.upandopenimaging.com

RJA Construction, LLC
General Contractor

Billy Rousseau
Sales & Marketing

PO Box 601632
Dallas, Texas 75360
Tel: 972.804.5540
Email: billy@rjadallas.com
Website: www.rjadallas.com

RJA CONSTRUCTION, LLC

Unique's ONE HOUR
AIR CONDITIONING & HEATING.
Always On Time... Or You Don't Pay A Dime!..

Steve Rothacker
CEO

1510 Stevens Street / Dallas, TX 75218
Cell: (972) 400-0833 / Phone: (214) 319-9507 / Fax: (214) 328-0585
steve.rothacker@onehourair.com • www.onehourair.com

ROACH HOWARD SMITH & BARTON
...an Assures Global Partner

Karen K. Farris, CPCU, ARM
President & CEO
kfarris@rhsb.com

Leroy Howard
Founder
lhoward@rhsb.com

8750 N Central Expressway Suite 500 Dallas, Texas 75231-6458
972-744-2701 Fax 972-231-1368 www.rhsb.com

ASTRO

PRINTING
PUBLISHING
ADVERTISING
GRAPHIC DESIGN

Dennis Devenport
972.644.7676
www.astro-graphics.com

COMMUNITIES FOUNDATION of TEXAS

Bringing visionary philanthropists and worthy causes together

5500 CARUTH HAVEN LANE • DALLAS, TEXAS 75225
(214) 750-4222 • www.cftexas.org

Mike Jarrell, LUTCF, CIC
Insurance and Financial Services Agent

FARMERS

Auto • Home • Life • Business
6500 East Mockingbird Lane, Ste 100
Dallas, TX 75214
Bus: 214-821-9687 214-908-7544 cell
Fax: 214-821-9913
mjarrell@farmersagent.com

DAVE PERRY-MILLER & ASSOCIATES

Barbara Barney
Direct 469.371.7777 Voice Mail 972.949.4253
Email barbara@daveperry-miller.com

1500 Preston Road, Suite 290 Dallas TX 75205
Office 214.536.6600 Fax 972.949.4253
www.daveperry-miller.com

In top 10 Producers for Highland Park Office

Texas Health Presbyterian Foundation

Healing Hands. Caring Hearts.™

Kristine Christlieb
8440 Walnut Hill Lane, Suite 800, LB6
Dallas Texas 75231
ph. 214-345-2030
www.texashealth.org
kristinechristlieb@texashealth.org

Edward Jones
MAKING SENSE OF INVESTING

Dax A. Seale
Financial Adviser

Park Cities - Dallas
9400 N Central Expressway
Suite 1309
Dallas, TX 75231
Bus. 214-750-3672
Fax 877-469-2490
dax.seale@edwardjones.com
www.edwardjones.com

neighborhood dining at its best
in Snider Plaza

Amore Italian
Peggy Sue BBQ
Cisco Grill

Marc and Susan Hall

Sungate Solar

Renewing Tomorrow.
Today...

Bill Kelly
Bill@SungateSolar.com
(214) 908-9599

Greg Pape
Broker Associate

Park Cities Office
5950 Sherry Lane, Suite 110
Dallas, Texas 75225

214.696.8877
Cell: 214.546.4066
Voicemail: 972.380.7885
Fax: 214.691.7779
gregpape@att.net

VIRGINIA COOK REALTORS

QUALITY FENCE INDUSTRIES

Quality Fence Company

8605 Sovereign Row
Dallas, Texas 75247
Wood Decks Overhead Structure
Wood Benches
All Types of Wood Fences
Chain Link

Kathleen's sky diner

Kathleen & Robert Ellington
4424 Lovers Lane • University Park, Texas 75225
214-691-2355

ENTRUST CAPITAL ADVISORS
— Sellers Representation, Mergers & Acquisitions —

Dr. L. Nolan Duck, CBI
Partner

2425 N. Central Expressway, Suite 200 • Richardson, Texas 75080
Office 972.664.0400 • Cell 972.358.0321 • Fax 972.664.0401
NolanDuck@EntrustCap.com • www.EntrustCap.com

TEXAS HEALTH PRESBYTERIAN FOUNDATION

Healing Hands. Caring Hearts.™

Kristine Christlieb
8440 Walnut Hill Lane, Suite 800, LB6
Dallas Texas 75231
ph. 214-345-2030
www.texashealth.org
kristinechristlieb@texashealth.org

J. HERBERT BURKMAN & ASSOCIATES
ECONOMICS RESEARCH

J. HERBERT BURKMAN, Ph.D.

2501 Oak Lawn Avenue, Suite 560
Tel: 214.443.0664

Dallas, Texas 75219
Email: jherb100@aol.com

J. HERBERT BURKMAN & ASSOCIATES
ECONOMICS RESEARCH

J. HERBERT BURKMAN, Ph.D.

2501 Oak Lawn Avenue, Suite 560
Tel: 214.443.0664

Dallas, Texas 75219
Email: jherb100@aol.com

THE HUB The Rotary Club of Park Cities



www.parkcitiesrotary.org

Leaders united worldwide to provide humanitarian service, encourage high ethical standards in all vocations, and help build goodwill and peace in the world.

Service
Above
Self

May 14, 2010

TODAY'S PROGRAM

Program Chair of the Day: Jack Kearney
Kendall Laughlin



Rotary Day: 4th of July Parade and New Member Speeches

4th of July Parade Monday, July 5th

Traditionally, line-up for the parade starts at 7:30 am, beginning at the Highland Park Town Hall on Euclid Ave. It ends at Goar Park near the University Park Town Hall on University Blvd. The parade starts at 9:00 am, and activities at Goar Park start at 9:30. There is no admission charge. The special beneficiary of the July 4th Parade in 2010 will be Rotary International's End Polio Now campaign.

Last year over **100 Park Cities Rotarians** took part

Volunteers are needed in all aspects of planning and conducting the Parade!



The Float Committee

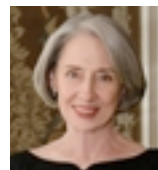


The parade goes by



The RCPC tent at Goar Park

New Members Speaking Today



Cindy Cummings

Classification: Community Leader
Proposed by **Bob Dill**

Roger Diebel
Classification: Funeral Services
Proposed by **Chris Clausen**



Frank Leonard

Classification: Medicine
Proposed by **Bill Sleeper**

Will Reppeto
Classification: Family Law
Proposed by **Michael Rainwater**



COMMITTEE TIME

Hillcrest H.S. Interactors Read at Elementary Schools

On May 5th eighteen HHS Interact members, accompanied by Rotarians **Cindy Cummings** and **Linda Tunnell**, went to read books provided by the Dallas RC to kindergarten students at Preston Hollow and McShan Elementary Schools.

The personalized books, *I Like Me*, were a big hit with over seventy-five students, some of

whom only spoke Spanish – so some of our Spanish speaking Interactors stepped up and read the books in Spanish. It was great to watch the interaction between these kids!

Since its inception, The Dallas Rotary Club has distributed over 44,000 books. The Interact members want to make this a yearly project!



New Member Fellowship Event

Wednesday, May 19
5:00 pm
Snuffers
in Preston Center

Chartered in 1948

LAST WEEK

Presiding: **Phillip Bankhead**
 Invocation: **Orville Salmon**
 Pledge/Song Leader: **John Gilchrist**
 Introductions: **Mark Kashar**
 Four Way Test: **Greg Pape**
 Photographer: **Bill Kelly**
 Chair of the Day: **Andy Carothers**
 Speaker: **Wilson Sands** and
John DeFillipo
 Program: **J. B. Sands Wetland Center**



President **Phillip Bankhead** called the meeting to order and gave a brief update from the Multi-District Conference.

Orville Salmon gave the invocation and noted that PP

Ben Young's wife Jeanne has had a stroke. Please keep them in your prayers.

John Gilchrist led the Pledge of Allegiance and the "Star Spangled Banner." **Dax Seale** introduced The Hub and the web advertisers of the week. **Mark Kashar** intro-

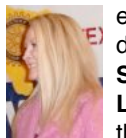


duced our visitors and guests, including a former RCPC member. **Bob Dill** introduced a long-distance visiting Rotarian from Inyokern, CA, whose brother is being buried at the DFW National

Cemetery. PP **Ley Waggoner** introduced new member **J R Schroder**, whose classification is real



estate. President **Phillip** introduced returning member, **Sandra Starr** whose husband is PP **Hy Lyon**. **Gregg Pappas** answered the Question of the



Members who brought guests

Bob Dill
 Marc Hall
 Nick Shoop
 Ley Waggoner

Day, and then announced seventeen attendance awards, culminated by **Sam Miller** with



thirty-seven years.

PP **Greg Pape** introduced **Charlie Bond**, one of District 5810's top contributors to the Rotary Foundation. Every year **Charlie** honors an RCPC member in memory of his father-in-law and former member Jere Elliott. This year the RCPC Board decided to honor former member



Don Allen as a Paul Harris Fellow, who was represented by his widow and RCPC member **Elaine Allen**.

Elaine recalled what a wonderful man, father and grandfather Don was and thanked all RCPC members for their support.

Andy Carothers introduced our speakers today, **Wilson Sands** and **John DeFillipo**. **Wilson** spoke first saying that the East Fork Wetland Project, the Bunker



Sands Mitigation Bank, and the **John Bunker Sands Wetland Center** are on land owned by his grandfather. The mitigation bank has been operating for over a year. It is a site where rivers or wetlands are re-

stored or preserved and may provide credits to be purchased by other projects to compensate for possible damage. **John DeFillipo** explained the wetland cells which are helping to supply clean water. The cells were funded by the N.TX Water District.

The wetland cells consist of twenty-four sediment ponds, where the water goes through a purification process. Wetland wildlife also is finding and populating the area.



? ? ? Question of the Day ? ? ?

Q : What is an e-make-up? How many e-make-ups are permitted each year?

A : Four e-make-ups are permitted per year. They are Rotary meetings on line. See www.rotary.org/en/MediaAndNews/News/Pages/081222_news_howto.aspx. Don't forget to report your make-up on the RCPC website.



EVENTS CALENDAR

May						
S	M	T	W	Th	F	S
2	M	M	M V V	M In	Mtg Web	
9	M	M	FF	M In	Mtg	
16	M	M C	M C N	M In	Mtg	
23	M	M	M	M In	Mtg	
30						

AED = Defibrillator Training
BI = Blood Drive
BD = Board of Dirs. Mtg, 7 am
LalMadeleine, 75 & Mockingbird
CM = Circles of Success
 Mentoring See T. Gomes
Cn = PCR Connect Event.
CP = ChildsPlay Work Mtg
D = District 5810 Event
DH = Dentistry with a Heart
FR = Family of Rotary Event
F = Fellowship Event
FF = RCPC Foundation Fund
 Mtg. See Rick Amsberry

Get involved!

In- Interact at Hillcrest H.S., 8 am. See Tracy Gomes
M = Meals on Wheels (Different teams on each day) See Charles Delphenis
Mc = Ronald McDonald House-See Jina McDaniel
NM = New Member Event
Pr = Program Committee Mtg
Reading and Radio Resources See Hal Copeland
SpE = Special Service Event
VV = Vet to Vet - See Bob Dill
Web = Web-lite after noon mtg
Blue = Activities on own schedule

May 14, 2010 - Page 2

THE HUB

Newsletter of the
 Rotary Club of Park Cities (Dallas)
 Betty Dawson, *Editor*

Shutterbug Committee

Fred Speno, *Chair*

Bulletin/Internet Advertising

Dax Seale, *Chair*



OFFICERS and DIRECTORS 2009-2010

Phillip Bankhead, *President*
Rick Amsberry, *President Elect*
Jim Mills, *Vice President*
Pam Carvey, *Treasurer*
Jennifer Zuniga, *Secretary*
Mike Kelley, *Sgt. at Arms*
Eric Heitkamp, *Club Service I*
Charlotte Hudgin, *Club Service II*
Jack Kearney, *Community Service I*
Fred Brown, *Community Service II*
Marshall Weaver, *Vocational Service*
Bud Naifeh, *International Service*
Rosemary Domecki, *At Large*
Ley Waggoner, *Immediate Past President*
Ben Young, *Parliamentarian*
Jim Wolf, *Historian*
Laurie Aldredge, *Club Administrator*

6704 Snider Plaza
 Dallas, Texas 75205

Office Phone: 214-739-4170

Office Fax: 214/363-6980

www.parkcitiesrotary.org

Email: club@parkcitiesrotary.org



John Kenny, *Scotland*
President, Rotary International
www.rotary.org

Dave McSpadden, *Waxahachie*
Governor, District 5810
www.rotary5810.org

UPCOMING PROGRAMS

May 14, 2010 - Page 3



May 21 Jill A. Jordan, Asst. City Mgr
Trinity River Corridor Update



June 4 Dennis McQuiston
Capitalism - Cause or Solution



May 28 Memorial Day Program
Admiral Jim Lair



June 11 Larry Young, CEO-Dr. Pepper
Culture and Entrepreneurship

CLUB ANNOUNCEMENTS

Sign up at
www.parkcitiesrotary.org

PCR Connect, Wed, May 19, 5:30-7:30pm, Snuffers in Preston Center. See Rob Banes

DG Installation Banquet, Fri, June 4, 6:00-9:00pm \$35/each.
Special Guest Speaker: Rotary International President-Elect. See www.rotary5810.org for details and to make reservations.

Host Families are needed for Youth Exchange Student.
See Herb Burkman for dates and details.



July 4th Parade Hotline is up and running - 972-385-7755 or
<http://july4.parkcitiesrotary.org/>



End Polio Now Night at the Ballpark, Sat, July 24, Angels vs Rangers - www.texasrangers.com/district5790 (password: rangers)

ROTARY CONNECTED

LinkedIn Interesting new thread: Looking for Avatars within the Rotary network.

Tweet of the Week: Sign the ball to help @Rotary Kick Polio Out of Africa:
<http://bit.ly/aesqBQ>

f Interesting new thread: Rotary International Read the adventures of a Rotarian from Michigan who set out to drive a car from England to Mongolia for a fundraiser. www.rotary.org

YouTube RI has its own channel on YouTube offering a growing collection of videos and psas.

flickr Check out or add to RI's Flickr group often, www.flickr.com/groups/familyofrotary/

THOUGHTS ON...

Parades

The second day of July, 1776, will be the most memorable epocha in the history of America. I am apt to believe that it will be celebrated by succeeding generations as the great anniversary festival. It ought to be commemorated as the day of deliverance, by solemn acts of devotion to God Almighty. It ought to be solemnized with pomp and parade, with shows, games, sports, guns, bells, bonfires, and illuminations, from one end of this continent to the other, from this time forward for evermore.

~ John Adams

And when it rains on your parade, look up rather than down. Without the rain, there would be no rainbow.

~ Jerry Chin

Parades should be classed as a nuisance and participants should be subject to a term in prison.

~ Will Rogers

FAMILY OF ROTARY

Host Families are needed for Youth Exchange Student

Getting to know Kimberly

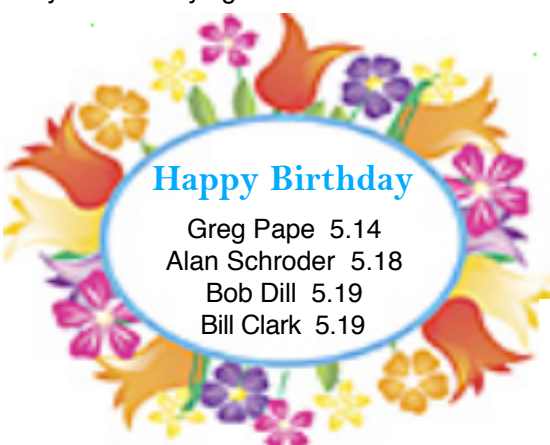
Uymatiao: Kimberly attends Iloilo Central Commercial H.S, a boarding school. She says "All the activities are mostly scheduled so free time is very limited. In a day I might have an hour or even less for myself, which I use mostly for reading. My favorites are fiction books ... I love imagining



THEY PROFIT MOST WHO LAUGH BEST

A secret agent from the Irish Republic was on a mission and was being parachuted behind enemy lines. When he pulled the ripcord on his main parachute, after he had jumped from the airplane, nothing happened. Quickly, he pulled the ripcord on his reserve parachute, but again nothing happened. "I bet when I get

down there," he thought, "the folding bicycle I'm carrying won't work either."



Happy Birthday

Greg Pape 5.14
Alan Schroder 5.18
Bob Dill 5.19
Bill Clark 5.19

FOUNDATION FUNDERS

Our Funders for Next Week are

Steve Herman
Bill Hilberth
Lilly Hogarth
Roger Hogarth

We gratefully acknowledge
ASTRO-GRAPHICS
for the partial funding of
the weekly printing of The Hub

CNC HOME CARE
Established in 1994
Assisted Aging • Home Management • Social Activities

CHRISTIAN F. CLAUSEN, MBA, CMC, RG-NGF
ADMINISTRATOR

8111 Preston Road, Suite 415
Dallas, Texas 75225

(214) 540-5942

FUGRO

FUGRO CONSULTANTS, INC.

2880 Virgo Lane
Dallas, Texas 75229
Phone: 972-484-8301
Fax: 972-620-7328
Email: rpatton@fugro.com

ROBERT S. PATTON, P.E.
Senior Consultant

Morgan Buildings & Spas, Inc.

From Our Factory to You
for Over 40 Years

ALAN WINN
Corporate Counsel

2800 McCree Road
Garland, TX 75041
P.O. Box 462088
Garland, TX 75048
(800) 950-0321
Direct (972) 864-7326
FAX (972) 864-7312
e-mail: alanwin@morganusa.com

ELLIOTT'S HARDWARE

Making hardware easy.

DALLAS Maple at Motor 214-634-9900
PLANO Coit at W. Park 972-312-0700
MESQUITE Kearney at Galloway 214-324-5087

NOW OPEN WEEKDAYS 8-8 • SATURDAY 9-5
Visit anytime at elliottshardware.com

SLEEPER SEWELL

WILLIAM E. SLEEPER, CPCU, CLU, ARM, AAI
VICE CHAIRMAN

direct: 972.419.7507
bill.sleeper@sleepersewell.com

Sleeper Sewell Insurance Services, Inc.
A division of ANBTX Insurance Services, Inc.
main: 972.419.7500 fax: 972.419.7555
12400 Coit Road, Suite 1100
Dallas, Texas 75251-2039
www.sleepersewell.com

RLG

RAYMOND L. GOODSON JR., INC.
CONSULTING ENGINEERS

David M. Goodson, P.E.
Stuart A. Markussen, P.E., R.P.L.S.

Suite 300, LB 17 • 5445 La Sierra • Dallas, Texas 75231-4138
214/739-8100 • Fax 214/739-6354

SPARKMAN/HILLCREST

FUNERAL HOME • CEMETERY • FLORAL SHOP

ROGER DIEBEL
FAMILY SERVICE

7405 W. NORTHWEST HIGHWAY
DALLAS, TEXAS 75225
TELEPHONE: 214-363-5401
FAX: 214-368-2388
CELL: 972-800-9095
EMAIL: roger.diebel@sci-us.com

Dignity

Rob Banes, CPA

WAGNER, EUBANK & NICHOLS, L.L.P.
Certified Public Accountants

The Berkshire at Preston Center
5950 Berkshire Lane, Suite 300
Dallas, Texas 75225
Ph: (214) 692-6800
Fax: (214) 692-7844
rbanes@wencpa.com

Park Cities Dental Associates

3110 Webb Avenue
Suite 300
Dallas, Texas 75205
214-528-7870

Roy S. Washburn, D.D.S., F.A.G.D.
Philip E. Lindley, D.D.S.

JAMES V. ROBERTS
BOARD CERTIFIED - ESTATE PLANNING AND PROBATE LAW
TEXAS BOARD OF LEGAL SPECIALIZATION

2200 ONE GALLERIA TOWER
13355 NOEL RD., L.B., 48
DALLAS, TEXAS 75240-1518
TELEPHONE: (214) 528-2822
FAX: (214) 528-3110
JIM@JAMESVROBERTS.COM

GPM GLAST, PHILLIPS & MURRAY
ATTORNEYS AND COUNSELORS

WILLIAM L. SIEGEL
RICHARD BARRETT-CUETARA
DREW N. BAGOT
ATTORNEYS AT LAW

COWLES & THOMPSON

Attorneys & Counselors

901 Main Street, Suite 3900
Dallas, Texas 75202
TEL 214.672.2000 FAX 214.672.2020

J. Marshall Weaver

CANNON DEVELOPMENT, Z

7557 Rambler Road, Suite 721
Dallas, Texas 75231
(972) 239-1060
Fax (972) 934-8694
mweaver@cannoninc.net

We Gratefully Acknowledge

RJA Construction, LLC
General Contractor

Billy Rousseau
Sales & Marketing

PO Box 601632
Dallas, Texas 75360
Tel: 972.804.5540
Email: billy@rjadallas.com
Website: www.rjadallas.com

RJA CONSTRUCTION, LLC

for Supporting The Hub

NEATHERY ELECTRIC, INC.

Security Cameras
Home Theater
Computer/Data Services
Electrical & Lighting

www.neatheryelectric.com

214-691-8844

Bill Neathery

Melissa Rench
Director of Operations
mrrench@upandopenimaging.com

1360 W. Campbell Rd., Suite 122
Richardson, TX 75080
ph. 972-479-9500
fax. 972-479-9544
www.upandopenimaging.com

UP&OPEN IMAGING
The Stand-Up MRI

RJA Construction, LLC
General Contractor

Billy Rousseau
Sales & Marketing

PO Box 601632
Dallas, Texas 75360
Tel: 972.804.5540
Email: billy@rjadallas.com
Website: www.rjadallas.com

RJA CONSTRUCTION, LLC

Unique's ONE HOUR
AIR CONDITIONING & HEATING.
Always On Time... Or You Don't Pay A Dime!..

Steve Rothacker
CEO

1510 Stevens Street / Dallas, TX 75218
Cell: (972) 400-0833 / Phone: (214) 319-9507 / Fax: (214) 328-0585
steve.rothacker@onehourair.com • www.onehourair.com

ROACH HOWARD SMITH & BARTON
...an Assures Global Partner

Karen K. Farris, CPCU, ARM
President & CEO
kfarris@rhsb.com

Leroy Howard
Founder
lhoward@rhsb.com

8750 N Central Expressway Suite 500 Dallas, Texas 75231-6458
972-744-2701 Fax 972-231-1368 www.rhsb.com

ASTRO

PRINTING
PUBLISHING
ADVERTISING
GRAPHIC DESIGN

Dennis Devenport
972.644.7676
www.astro-graphics.com

RJA Construction, LLC

COMMUNITIES FOUNDATION of TEXAS

Bringing visionary philanthropists
and worthy causes together

5500 CARUTH HAVEN LANE • DALLAS, TEXAS 75225
(214) 750-4222 • www.cftexas.org

Mike Jarrell, LUTCF, CIC
Insurance and Financial Services Agent

FARMERS

Auto • Home • Life • Business
6500 East Mockingbird Lane, Ste 100
Dallas, TX 75214
Bus: 214-821-9687 214-908-7544 cell
Fax: 214-821-9913
mjarrell@farmersagent.com

Dax A. Seale
Financial Adviser

Edward Jones
MAKING SENSE OF INVESTING

Park Cities - Dallas
9400 N Central Expressway
Suite 1309
Dallas, TX 75231
Bus. 214-750-3672
Fax 877-469-2490
dax.seale@edwardjones.com
www.edwardjones.com

neighborhood dining at its best
in Snider Plaza

Amore Italian
Peggy Sue BBQ
Cisco Grill

Marc and Susan Hall

Sungate Solar

Renewing Tomorrow,
Today...

Bill Kelly

Bill@SungateSolar.com
(214) 908-9599

Greg Pape
Broker Associate

Park Cities Office
5950 Sherry Lane, Suite 110
Dallas, Texas 75225

214.696.8877
Cell: 214.546.4066
Voicemail: 972.380.7885
Fax: 214.691.7779
gregpape@att.net

VIRGINIA COOK REALTORS

Quality Fence Company

8605 Sovereign Row
Dallas, Texas 75247
Wood Decks • Overhead Structure
Wood Benches
All Types of Wood Fences
Chain Link

CHARLIE POLLAN
972-239-7201

Kathleen's sky diner

Kathleen & Robert Ellington
4424 Lovers Lane • University Park, Texas 75225
214-691-2355

ENTRUST CAPITAL ADVISORS
—Sellers Representation, Mergers & Acquisitions—

Dr. L. Nolan Duck, CBI
Partner

2425 N. Central Expressway, Suite 200 • Richardson, Texas 75080
Office 972.664.0400 • Cell 972.358.0321 • Fax 972.664.0401
NolanDuck@EntrustCap.com • www.EntrustCap.com

DAVE PERRY-MILLER & ASSOCIATES

Barbara Barney
Direct 469.371.7777 Voice Mail 972.949.4253
Email barbara@daveperry-miller.com

5500 Prentiss Road Suite 200 Dallas TX 75205
Office 214.526.6600 Fax 972.949.4253
www.daveperry-miller.com

In top 10 Producers
for Highland Park Office

Texas Health Presbyterian Foundation

Healing Hands. Caring Hearts.™

Kristine Christlieb
8440 Walnut Hill Lane, Suite 800, LB6
Dallas Texas 75231
ph. 214-345-2030
www.texashealth.org
kristinechristlieb@texashealth.org

J. HERBERT BURKMAN & ASSOCIATES
ECONOMICS RESEARCH

J. HERBERT BURKMAN, Ph.D.

2501 Oak Lawn Avenue, Suite 560
Tel: 214.443.0664

Dallas, Texas 75219
Email: jherb100@aol.com

THE HUB The Rotary Club of Park Cities



www.parkcitiesrotary.org

Service
Above
Self

Leaders united worldwide to provide humanitarian service, encourage high ethical standards in all vocations, and help build goodwill and peace in the world.

May 21, 2010

Program Chair of the Day: Bob Patton

TODAY'S PROGRAM



Jill A. Jordan, Asst. City Mgr. Trinity River Corridor Update

About the Project

In 1998, a plan was presented to the voters of Dallas, in the form of a \$246 million bond program, to do what had been talked about for almost 100 years – transforming one of Dallas's greatest natural resources, the Trinity River, into the City's centerpiece of activity and development.

Included in this program were the establishment of flood protection, recreational amenities, transportation improvements and environmental restoration/mitigation.

Jill Jordan began her professional career in 1980 as an Environmental Engineer with Energy Resources Co., Inc, in Cambridge, Massachusetts.

She received a master's degree in Environmental Engineering at Harvard University in 1980; a bachelor's degree in Water Resources and Environmental Engineering at Vanderbilt University in 1979. She also has a Certificate in Ranch Management from TCU.

After leaving Massachusetts, she arrived in Texas to move up through the ranks in the engineering field. Her career highlights include the City of Dallas Storm Water Manager 1982-1985; Private Environmental Consultant, 1985 - 1988; Dallas Park and Recreation Department Engineer 1988-1990; Assistant Public Works Director, 1990-1994; Interim

Public Works Director 1994-1995; and Denton Water Utilities Director, 1996-1999.

Ms. Jordan is currently Assistant City Manager with the City of Dallas with responsibilities for the administration of the Public Works & Transportation, Trinity Watershed Management Department, Communication & Information Services and the Office of Environmental Quality.

Jill participates in a number of civic and professional activities. She is a past Vice President of the Dallas Chapter of TSPE. She is a past president of the Dallas Branch of ASCE and the first woman to serve in that capacity. She is currently on the Board of the Greater Dallas Planning Council and the Advisory Board for the Environmental Science program at UT Arlington.

COMMITTEE TIME

Ronald McDonald House

Thanks to the generous servings of spaghetti and Italian sausage provided by **Marc Hall's Amore' Restaurant**, RPCP volunteers were able to provide a delicious dinner to residents at Ronald McDonald House Monday night, May 17th.



Shown is new volunteer cook, John Brown, under the watchful eye of **Ley Waggoner**. Next R. McDonald is June 21!

Aiming at 200!

President **Phillip** announced the wonderful fact that so far in this Rotary year, RPCP has added a total of **thirty-one new members!**

Unfortunately, that has been offset with the loss of fourteen members due to a variety of business and health reasons.

The net gain to the club of seven teen new members puts the club at 198 members, **making it the largest club in District 5810!**

Why not **200 by June 30?**



District Governor Linda Elliott's Installation Banquet

Date: Friday, June 04, 2010, 6 - 9 pm

Event Fee: \$35.00,

Dinner will be served

Cash Bar, Business Casual Dress

Location: Ruthe Jackson Center, 3115 S. Carrier Pkwy, Grand Prairie, TX

Please join us

as we start the new Rotary year with

Special Guest Speaker

Ray Klinginsmith
RI President-Elect

Register by May 21.

See www.rotary5810.org

Chartered in 1948

LAST WEEK

Presiding: **Phillip Bankhead**
 Invocation: **Rick Amsberry**
 Pledge/Song Leader: **Gerry Montgomery**

Introductions: **Jim Evans**
 Four Way Test: **Greg Pape**
 Chairs of the Day: **Jack Kearney** and **Kendall Laughlin**

Speaker: **New Members**
 Program: **Rotary Day**

President **Phillip Bankhead** called the meeting to order. **Rick Amsberry** gave the invocation and noted that **Dennis Devenport's** father-in-law is undergoing cancer treatment and **Ben Young's** wife, Jeanne, is in Presbyterian Hospital. Please keep them in your prayers.

Gerry Montgomery led the Pledge of Allegiance and the "Star Spangled Banner," followed by "Getting To Know You." **Dax Seale** introduced The Hub and web advertisers of the week. **Jim Evans** introduced our visitors and guests, including long-distance visitor and former member Mario Messina.

PP **Linda Tunell** announced a new member Happy Hour. President **Phillip** announced a special RCPC Foundation meeting. He also asked for members to refer to the information on the RCPC website if they had a non-profit agency to be considered. He reminded members to update their make-ups by reporting them on the website.

Jack Kearney answered the Question of the Day, and reminded everyone that the RCPC Fourth of July Parade will be on Monday, July 5th this year. The emphasis is on safety, and there are many opportunities to volunteer, before, during and after the parade.

Kendall Laughlin introduced our new members speaking today. He first recognized **Chris Clausen** and **Bill Sleeper** for the many new members they have sponsored.



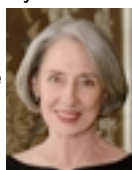
Roger Diebel was first to speak. He graduated from Texas A&M, then began working in New York. After coming back to Dallas he built and sold a company before managing endowment funds for businesses like cemeteries. He then became a cemetery owner. Since then he has begun to work with Sparkman-Hillcrest. He and his wife enjoy traveling.



Next to speak was **Frank Leonard**. He grew up in the DFW area, but went to medical school in Richmond, VA, and did his internship in New Orleans, LA. Due to his navy scholarship he then spent time on a ship in the Pacific and at a submarine center in Scotland. After his residency in Rhode Island, he returned to Dallas and practices at Presbyterian.



Cindy Cummings spoke next. She grew up in the Park Cities, but went to Texas Tech. She retired two years ago as the Director of Worship at HP Methodist Church. She has two daughters and four grandchildren. One of her granddaughters received the Rotary Leadership Award. She enjoys traveling, and has joined Rotary to find opportunities to serve others.



Last but not least was **Will Reppeto**. He believes that relationships are the most important things in life. He and his wife like to travel and to spend time involved in their children's activities. He grew up in the Park Cities, and went to UT and SMU Law School. He was a member of the Boerne Rotary Club while living in the Hill Country.



Question of the Day

Q : When was the last time the Fourth of July was on Sunday?

A : Using the standard Gregorian calendar, it was 2004. However, in the Park Cities using the [Roy] Washburn-ian calendar, it can not be the 4th of July unless there is a parade – so this year the Fourth will be on Mon, July 5.

EVENTS CALENDAR

May						
S	M	T	W	Th	F	S
2	M	M	M V	M In	Mtg Web	
9	M	M	FF	M In	Mtg	
16	M	M	M Cn	M In	Mtg	
23	M	M	M	M In	Mtg	BI
30						

AED = Defibrillator Training
BI = Blood Drive
BD = Board of Dirs. Mtg, 7 am
LalMadeleine, 75 & Mockingbird
CM = Circles of Success
Mentoring See T. Gomes
Cn = PCR Connect Event
CP = ChildsPlay Work Mtg
D = District 5810 Event
DH = Dentistry with a Heart
FR = Family of Rotary Event
F = Fellowship Event
FF = RCPC Foundation Fund
Mtg. See Rick Amsberry

Get involved!

In- Interact at Hillcrest H.S., 8 am. See Tracy Gomes
M = Meals on Wheels (Different teams on each day) See Charles Delphenis
Mc = Ronald McDonald House-See Jina McDaniel
NM = New Member Event
Pr = Program Committee Mtg
Reading and Radio Resources See Hal Copeland
SpE = Special Service Event
VV = Vet to Vet - See Bob Dill
Web = Web-lite after noon mtg
Blue = Activities on own schedule

May 21, 2010 - Page 2

THE HUB

Newsletter of the
 Rotary Club of Park Cities (Dallas)
 Betty Dawson, *Editor*

Shutterbug Committee

Fred Speno, *Chair*

Bulletin/Internet Advertising
 Dax Seale, *Chair*



OFFICERS and DIRECTORS 2009-2010

Phillip Bankhead, President
Rick Amsberry, President Elect
Jim Mills, Vice President
Pam Carvey, Treasurer
Jennifer Zuniga, Secretary
Mike Kelley, Sgt. at Arms
Eric Heitkamp, Club Service I
Charlotte Hudgin, Club Service II
Jack Kearney, Community Service I
Fred Brown, Community Service II
Marshall Weaver, Vocational Service
Bud Naifeh, International Service
Rosemary Domecki, At Large
Ley Waggoner, Immediate Past President
Ben Young, Parliamentarian
Jim Wolf, Historian
Laurie Aldredge, Club Administrator

6704 Snider Plaza
 Dallas, Texas 75205

Office Phone: 214-739-4170

Office Fax: 214/363-6980

www.parkcitiesrotary.org

Email: club@parkcitiesrotary.org



John Kenny, Scotland
 President, Rotary International
 www.rotary.org

Dave McSpadden, Waxahachie
 Governor, District 5810
 www.rotary5810.org

UPCOMING PROGRAMS

May 21, 2010 - Page 3



May 28 Memorial Day Program
Admiral Jim Lair



June 11 Larry Young, CEO-Dr. Pepper
Culture and Entrepreneurship



June 4 Dennis McQuiston
Capitalism - Cause or Solution



June 18 Rosemary Rumbley
"Mighty Might"

CLUB ANNOUNCEMENTS

Sign up at
www.parkcitiesrotary.org

Blood Drive, Sat, May 29, 10am-5pm in front of Dillards inside NorthPark. Donors and volunteers needed - three shifts available. Sign up on the website. See Michael Rainwater.

Special RCPC Foundation Exec. Committee, Tues, June 8.
See the RCPC web's Foundation [link](#) to suggest an agency for a grant

Host Families are needed for Youth Exchange Student.
See Herb Burkman for dates and details.



July 4th Parade Hotline is up and running - 972-385-7755 or
(Monday, July 5th) <http://july4.parkcitiesrotary.org/>



End Polio Now Night at the Ballpark, Sat, July 24, Angels vs Rangers - www.texasrangers.com/district5790 (password: rangers)

ROTARY CONNECTED

LinkedIn Interesting **new thread**: Should Rotary International enable the creation and distribution of FREE club website templates for Rotary clubs?



Tweet of the Week: What do you say when asked, "What's Rotary?" Carry our wallet-size card, and be prepared for your elevator speech. <http://cot.ag/1auBwL>



Interesting **new thread**: In recognition of their on-going support of a polio-free world, four members of the U.S. Congress and a government official received Rotary's Polio Eradication Champion Award on May 5. www.rotary.org



RI has its own channel on YouTube offering a growing collection of videos and psas.



Check out or add to RI's Flickr group often, www.flickr.com/groups/familyofrotary/

THOUGHTS ON...

Plans

A goal without a plan is just a wish.

~ **Antoine de Saint-Exupery**

A little inaccuracy sometimes saves tons of explanation.

~ **Saki**

Make no little plans; they have no magic to stir men's blood ... Make big plans, aim high in hope and work.

~ **Daniel Burnham**

Just because something does not do what you planned it to do doesn't mean it's useless.

~ **Thomas A. Edison**

Plans are only good intentions unless they immediately degenerate into hard work.

~ **Peter Drucker**

Bite off more than you can chew then chew it. Plan more than you can do, then do it.

~ **Anon.**

FOUNDATION FUNDERS

Our Funders for Next Week are

Leroy Howard
Charlotte Hudgin
Braxen Hyman
Mike Jarrell

NEW MEMBER TRIVIA

Dwight Clasby

1. What are you most proud of in your life?
My family
2. What is something about you that most people don't know? I was born on election day, 1952. I have a letter from Ike to my parents
3. What is your personal motto?
Courage, honor, truth
4. Who is the person who has influenced your life the most?
John Maher, HS football coach
5. What was your favorite childhood pet?
St. Bernard - "Duchess"
6. What is your favorite book or movie?
Movie: "Field of Dreams"
7. What would you like to be remembered for?
8. My character
9. What is your favorite thing to do in your spare time? Play golf
10. What is the most embarrassing thing that ever happened to you? Being selected to make a basket during half-time of a Mavs game and having a former player that I coached call me the next day to say how bad I was.
11. What is your nickname? Coach Dad
12. How did you first learn about Rotary? Friend of the family invited me to a meeting in OKC
13. Where were you and what were you doing on Sept. 11, 2001? Just left the hospital in OKC from visiting my mom and heading to work - heard it on the radio

THEY PROFIT MOST WHO LAUGH BEST

Those who jump off a bridge in Paris are in Seine

A man's home is his castle, in a manor of speaking.

Dijon vu - the same mustard as before.

Practice safe eating - always use condiments.

Happy

Birthday

Rob Eggemeyer 5.21
Kendra Norton 5.21
Jim Webb 5.22 • Lynn Surls 5.23
George Echerd 5.23
Rick Barrett-Cuetara 5.27
Roy Washburn 5.27

We gratefully acknowledge
ASTRO-GRAPHICS
for the partial funding of
the weekly printing of The Hub

CNC HOME CARE
Established in 1994
Assisted Aging • Home Management • Social Activities

CHRISTIAN F. CLAUSEN, MBA, CMC, RG-NGF
ADMINISTRATOR

8111 Preston Road, Suite 415
Dallas, Texas 75225

FUGRO
CONSULTANTS, INC.

2880 Virgo Lane
Dallas, Texas 75229
Phone: 972-484-8301
Fax: 972-620-7328
Email: rpatton@fugro.com

ROBERT S. PATTON, P.E.
Senior Consultant

Morgan Buildings & Spas, Inc.

ALAN WINN
Corporate Counsel

2800 McCree Road
Garland, TX 75041
P.O. Box 462088
Garland, TX 75048
(800) 950-0321
Direct (972) 864-7326
FAX (972) 864-7312
e-mail: alanwin@morganusa.com

From Our Factory to You
for Over 40 Years

ELLIOTT'S HARDWARE
Making hardware easy.

DALLAS Maple at Motor 214-634-9900
PLANO Coit at W. Park 972-312-0700
MESQUITE Kearney at Galloway 214-324-5087

NOW OPEN WEEKDAYS 8-8 • SATURDAY 9-5
Visit anytime at elliottshardware.com

SLEEPER SEWELL

WILLIAM E. SLEEPER, CPCU, CLU, ARM, AAI
VICE CHAIRMAN

direct: 972.419.7507
bill.sleeper@sleepersewell.com

Sleeper Sewell Insurance Services, Inc.
A division of ANBTX Insurance Services, Inc.
main: 972.419.7500 fax: 972.419.7555
12400 Coit Road, Suite 1100
Dallas, Texas 75251-2039
www.sleepersewell.com

RLG

RAYMOND L. GOODSON JR., INC.
CONSULTING ENGINEERS

David M. Goodson, P.E.
Stuart A. Markussen, P.E., R.P.L.S.

Suite 300, LB 17 • 5445 La Sierra • Dallas, Texas 75231-4138
214/739-8100 • Fax 214/739-6354

SPARKMAN/HILLCREST
FUNERAL HOME • CEMETERY • FLORAL SHOP

ROGER DIEBEL
FAMILY SERVICE

7405 W. NORTHWEST HIGHWAY
DALLAS, TEXAS 75225
TELEPHONE: 214-363-5401
FAX: 214-368-2388
CELL: 972-800-9095
EMAIL: roger.diebel@sci-us.com

Dignity

Rob Banes, CPA

WAGNER, EUBANK & NICHOLS, L.L.P.
Certified Public Accountants

The Berkshire at Preston Center
5950 Berkshire Lane, Suite 300
Dallas, Texas 75225
Ph: (214) 692-6800
Fax: (214) 692-7844
rbanes@wencpa.com

Park Cities Dental Associates

3110 Webb Avenue
Suite 300
Dallas, Texas 75205
214-528-7870

Roy S. Washburn, D.D.S., F.A.G.D.
Philip E. Lindley, D.D.S.

JAMES V. ROBERTS
BOARD CERTIFIED - ESTATE PLANNING AND PROBATE LAW
TEXAS BOARD OF LEGAL SPECIALIZATION

2200 ONE GALLERIA TOWER
13355 NOEL RD., L.B., 48
DALLAS, TEXAS 75240-1518
TELEPHONE: (214) 528-2822
FAX: (214) 528-3110
JIM@JAMESVROBERTS.COM

GPM GLAST, PHILLIPS & MURRAY
ATTORNEYS AND COUNSELORS

WILLIAM L. SIEGEL
RICHARD BARRETT-CUETARA
DREW N. BAGOT
ATTORNEYS AT LAW

COWLES & THOMPSON

Attorneys & Counselors

901 Main Street, Suite 3900
Dallas, Texas 75202
TEL 214.672.2000 FAX 214.672.2020

J. Marshall Weaver

CANNON DEVELOPMENT, Z

7557 Rambler Road, Suite 721
Dallas, Texas 75231
(972) 239-1060
Fax (972) 934-8694
mweaver@cannoninc.net

Unique's **ONE HOUR**
AIR CONDITIONING & HEATING.
Always On Time... Or You Don't Pay A Dime!..

Steve Rothacker
CEO

1510 Stevens Street / Dallas, TX 75218
Cell: (972) 400-0833 / Phone: (214) 319-9507 / Fax: (214) 328-0585
steve.rothacker@onehourair.com • www.onehourair.com

ROACH HOWARD SMITH & BARTON
...an Assures Global Partner

Karen K. Farris, CPCU, ARM
President & CEO
kfarris@rshb.com

Leroy Howard
Founder
lhoward@rshb.com

8750 N Central Expressway Suite 500 Dallas, Texas 75231-6458
972-744-2701 Fax 972-231-1368 www.rshb.com

ASTRO
Graphics

PRINTING
PUBLISHING
ADVERTISING
GRAPHIC DESIGN

Dennis Devenport
972.644.7676

www.astro-graphics.com

neighborhood dining at its best
in Snider Plaza

Amore Italian
Peggy Sue BBQ
Cisco Grill

Marc and Susan Hall

Sungate Solar
Renewing Tomorrow,
Today...

Bill Kelly

Bill@SungateSolar.com
(214) 908-9599

Greg Pape
Broker Associate

Park Cities Office
5950 Sherry Lane, Suite 110
Dallas, Texas 75225

214.696.8877
Cell: 214.546.4066
Voicemail: 972.380.7885
Fax: 214.691.7779
gregpape@att.net

We Gratefully Acknowledge

UP&OPEN IMAGING
The Stand-Up™ MRI

Melissa Rench
Director of Operations
mrench@upandopenimaging.com

1360 W. Campbell Rd., Suite 122
Richardson, TX 75080
ph. 972-479-9500
fax. 972-479-9544
www.upandopenimaging.com

for Supporting The Hub

Quality Fence Company

8605 Sovereign Row
Dallas, Texas 75247
Wood Decks Overhead Structure
Wood Benches
All Types of Wood Fences
Chain Link

CHARLIE POLLAN
972-239-7201

Kathleen's sky diner

Kathleen & Robert Ellington
4424 Lovers Lane • University Park, Texas 75225
214-691-2355

ENTRUST CAPITAL ADVISORS
—Sellers Representation, Mergers & Acquisitions—

Dr. L. Nolan Duck, CBI
Partner

2425 N. Central Expressway, Suite 200 • Richardson, Texas 75080
Office 972.664.0400 • Cell 972.358.0321 • Fax 972.664.0401
NolanDuck@EntrustCap.com • www.EntrustCap.com

NEATHERY ELECTRIC, INC.

Security Cameras
Home Theater
Computer/Data Services
Electrical & Lighting

www.neatheryelectric.com

Bill Neathery **214-691-8844**

COMMUNITIES FOUNDATION of TEXAS

Bringing visionary philanthropists
and worthy causes together

5500 CARUTH HAVEN LANE • DALLAS, TEXAS 75225
(214) 750-4222 • www.cftexas.org

DAVE PERRY-MILLER & ASSOCIATES

Barbara Barney
Direct 469.371.7777 Voice Mail 972.949.4253
Email barbara@daveperry-miller.com

5500 Prentiss Road Suite 200 Dallas TX 75205
Office 214.526.6600 Fax 972.949.4253
www.daveperry-miller.com

In top 10 Producers
for Highland Park Office

UP&OPEN IMAGING
The Stand-Up™ MRI

Melissa Rench
Director of Operations
mrench@upandopenimaging.com

1360 W. Campbell Rd., Suite 122
Richardson, TX 75080
ph. 972-479-9500
fax. 972-479-9544
www.upandopenimaging.com

FARMERS

Auto • Home • Life • Business

6500 East Mockingbird Lane, Ste 100
Dallas, TX 75214
Bus: 214-821-9687 214-908-7544 cell
Fax: 214-821-9913
mjarrell@farmersagent.com

Mike Jarrell, LUTCF, CIC
Insurance and Financial Services Agent

Texas Health Presbyterian Foundation

Healing Hands. Caring Hearts.™

Kristine Christlieb
8440 Walnut Hill Lane, Suite 800, LB6
Dallas Texas 75231
ph. 214-345-2030
www.texashealth.org
kristinechristlieb@texashealth.org

RJA Construction, LLC
General Contractor

Billy Rousseau
Sales & Marketing

PO Box 601632
Dallas, Texas 75360
Tel: 972.804.5540
Email: billy@rjadallas.com
Website: www.rjadallas.com

Edward Jones
MAKING SENSE OF INVESTING

Dax A. Seale
Financial Adviser

Park Cities - Dallas
9400 N Central Expressway
Suite 1309
Dallas, TX 75231
Bus. 214-750-3672
Fax 972-469-2490
dax.seale@edwardjones.com
www.edwardjones.com

J. HERBERT BURKMAN & ASSOCIATES
ECONOMICS RESEARCH

J. HERBERT BURKMAN, Ph.D.

2501 Oak Lawn Avenue, Suite 560
Tel: 214.443.0664

Dallas, Texas 75219
Email: jherb100@aol.com

THE HUB The Rotary Club of Park Cities

www.parkcitiesrotary.org



Leaders united worldwide to provide humanitarian service, encourage high ethical standards in all vocations, and help build goodwill and peace in the world.

Service
Above
Self

May 28, 2010

TODAY'S PROGRAM

Program Chair of the Day: Jess Johnson



Rear Admiral Jim Lair Memorial Day Presentation

Admiral Lair is a native of Los Angeles, CA. He enlisted in the Marine Corps reserve in 1957, then entered the Navy through the Naval Aviation Cadet Program and earned his Wings and Commission in December 1961. He made three Western Pacific deployments flying from the Aircraft Carrier, Bennington. He next attended the Naval Postgraduate School and graduated in June 1969 with a Bachelor of Arts degree in International Relations.

Flying the A-4 Skyhawk and A-7 Corsair II, Admiral Lair made two Combat Cruises aboard the USS Ticonderoga, and USS Kitty Hawk flying over 200 Combat Missions over Vietnam. He then attended the School of Command and Staff at the Naval War College and received a MS in International Relations from the George Washington University.

He then made a third Combat Cruise

aboard the USS Coral Sea and participated in the evacuation of South Vietnam and was one of the leaders in the recovery of the Merchant Ship Mayaguez.

He commanded Attack Squadron 146, Carrier Air Wing Six during the Lebanon Crisis, the USS Caloosahatchee and the Aircraft Carrier USS America (CV66).

Following his tour as Chief of Staff for Commander US Sixth Fleet he was promoted to Rear Admiral.

He then commanded Carrier Group Two and deployed to the Mediterranean during the Bosnian Crisis.

Rear Admiral Lair's final active duty tour was as Director of Operations, Combat Commander, US Forces Europe, Stuttgart, Germany. He was responsible all operations in the European Area of Responsibility. This included the Air Land and Air Drop Resupply Missions in Bosnia; the enforce-

ment of the No Fly Zone over Northern Iraq and the humanitarian relief efforts for one million refugees in Rwanda.

Admiral Lair has over 8000 flight hours and 1400 Carrier Landings. His personal awards include the Defense Distinguished Service Medal, 4 Legions of Merit, Defense Meritorious Service Medal, Meritorious Service Award, 2 Individual Air Medals, 22 Strike Flight Air Medals and 4 Navy Commendation Medals with the Combat "V" and various campaign awards.

Retiring in 1995, he came to Texas and worked for Lockheed Martin on the Navy variant of the Joint Strike Fighter. He then managed the Flight Safety Learning Center at the DFW Airport. In 2005, he returned to the Federal Government and has been the Federal Security Director at DFW and Reno/Tahoe airports and the Deputy Federal Security Director at Phoenix.

COMMITTEE TIME

New Member Social

Many of RCPC's newest members attended a social hour at Snuffers Wed, May 21st. It was a great venue to learn ways to become more fully engaged in the Club and to get to know other new members. A big thank you to **Linda Tunnell, Karen Farris**



and **Kendall Laughlin** for organizing this successful event!

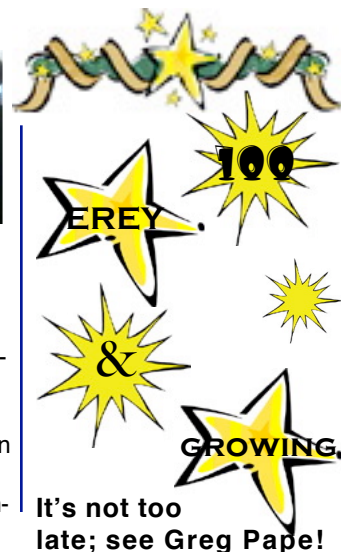
News from Hillcrest HS Interact Club

At their May 20 meeting the Interact Club at H.H.S. elected their officers for the 2010-11 school year.

There was much energy and excitement from the students already, as they have started making plans for next year.



◀ Meanwhile Interactors finished the year by reading to kids at McShan and Preston Hollow Elementary Schools.



Chartered in 1948

LAST WEEK

Presiding: **Phillip Bankhead**
 Invocation: **Moody Alexander**
 Pledge/Song Leader: **Karl Von Bieberstein**

Introductions: **Jon Petersen**
 Four Way Test: **Fred Speno**
 Chairs of the Day: **Bob Patton**
 Speaker: **Jill A. Jordan, Asst City Mgr**
 Program: **Update on the Trinity River**



President **Phillip Bankhead** called the meeting to order. **Moody Alexander** gave the invocation and noted that PP **Charles Delphenis** has had a pacemaker,

but was present at the meeting. Yea, **Charles!** PP **Karl Von Bieberstein** led the Pledge of Allegiance and the "Star Spangled Banner." He then congratulated **Kendra Norton** on her engagement. **Jon**



Petersen introduced our visitors and guests. **Dax Seale** introduced The Hub and the web advertisers of the week. **Mike Kelley** answered the Question of the



Day. PP **Greg Pape** announced that to date there are one hundred members who had contributed to the RI Foundation. He reminded us that "doing good in the world" is the goal, the mission, and the reason there is an RI Foundation. He then recognized



Members who brought guests
 Cub Amos
 Jack Kearney
 Jack Kelly
 Hy Lyon
 Bob Patton
 Jon Petersen
 Nick Shoop

PE **Rick Amsberry** as a third-level Paul Harris Fellow. President **Phillip** reported the club had accomplished 5,800 hours of community service in 2009-10, which equates to about \$120,000 worth

of service.

Bob Patton introduced our speaker today, Asst. City Manager, **Jill Jordan** who is responsible for the Trinity River Corridor Project. The project is twenty miles long, stretching from Luna Road and Royal Lane to where the Trinity crosses I20. It includes three flood control projects. The Corps of Engineers routinely inspects the levees, but in 2009 the levees were deemed unacceptable. Therefore, since 2009 the city has been fixing these operations and maintenance issues. The Trinity project raises the levees by two feet. The lower chain of wetlands has been completed, but there are wetlands in the upper part of the river that are still being constructed. Another part of the project is to improve the pump stations and build two new ones. The more observable parts of the project are the recreational areas, including a new lake near the Westmoreland Bridge, an amphitheater and sports complex on the banks, standing waves for kayakers, a hike and bike trail over the Santa Fe trestle, and a recreational island. There will be a series of trails into the Trinity Forest area, and gateway parks will be built at several entrances. There is an overlook area at Beckley and Commerce to watch the progress of the project. The Audubon Center has been constructed at an old land fill. Once the Calatrava Bridge is completed, the Continental Bridge will become a pedestrian bridge with areas for festivals. The first Calatrava Bridge will be finished in about a year. Also included in the plans is renovation of S. M. Wright Frwy.



May 28, 2010 - Page 2

THE HUB

Newsletter of the
 Rotary Club of Park Cities (Dallas)
 Betty Dawson, *Editor*
 Shutterbug Committee
 Fred Speno, *Chair*
 Bulletin/Internet Advertising
 Dax Seale, *Chair*



OFFICERS and DIRECTORS 2009-2010

Phillip Bankhead, President
Rick Amsberry, President Elect
Jim Mills, Vice President
Pam Carvey, Treasurer
Jennifer Zuniga, Secretary
Mike Kelley, Sgt. at Arms
Eric Heitkamp, Club Service I
Charlotte Hudgin, Club Service II
Jack Kearney, Community Service I
Fred Brown, Community Service II
Marshall Weaver, Vocational Service
Bud Naifeh, International Service
Rosemary Domecki, At Large
Ley Waggoner, Immediate Past President
Ben Young, Parliamentarian
Jim Wolf, Historian
Laurie Aldredge, Club Administrator

6704 Snider Plaza
 Dallas, Texas 75205
 Office Phone: 214-739-4170
 Office Fax: 214/363-6980
 www.parkcitiesrotary.org
 Email: club@parkcitiesrotary.org



John Kenny, Scotland
 President, Rotary International
 www.rotary.org

Dave McSpadden, Waxahachie
 Governor, District 5810
 www.rotary5810.org

EVENTS CALENDAR

June						
S	M	T	W	Th	F	S
		M	M V V	M	Mtg D	
6	M	M	FF	M	Mtg	
13	M	M	M Cn BD	M	Mtg	
20	M	Mc	M	M	Mtg	
27	M	M	M			

AED = Defibrillator Training
BI = Blood Drive
BD = Board of Dirs. Mtg, 7 am
LalMadeleine, 75 & Mockingbird
CM = Circles of Success
Mentoring See T. Gomes
Cn = PCR Connect Event
CP = ChildsPlay Work Mtg
D = District 5810 Event
DH = Dentistry with a Heart
FR = Family of Rotary Event
F = Fellowship Event
FF = RCPC Foundation Fund
Mtg. See Rick Amsberry

Get involved!

In- Interact at Hillcrest H.S., 8 am. See Tracy Gomes
BI = Meals on Wheels (Different teams on each day) See Charles Delphenis
Mc = Ronald McDonald House-See Jina McDaniel
NM = New Member Event
Pr = Program Committee Mtg
Reading and Radio Resources See Hal Copeland
SpE = Special Service Event
VV = Vet to Vet - See Bob Dill
Web = Web-lite after noon mtg
Blue = Activities on own schedule

UPCOMING PROGRAMS

May 28, 2010 - Page 3



June 4 Dennis McQuiston
Capitalism - Cause or Solution



June 18 Rosemary Rumbley
"Mighty Might"



June 11 Larry Young, CEO-Dr. Pepper
Culture and Entrepreneurship



June 25 Officer Installation for
2010-2011 Rotary Year

CLUB ANNOUNCEMENTS

Sign up at
www.parkcitiesrotary.org

Blood Drive, Sat, May 29, 10am-5pm in front of Dillards inside NorthPark. Donors and volunteers needed. See Michael Rainwater.

Vet to Vet, Wed, Jun 2, 6:30-8pm at VA Hospital. See Bob Dill

Special RCPC Foundation Exec. Committee, Tues, June 8.
See the RCPC web's Foundation [link](#) to suggest an agency for a grant

Host Families are needed for Youth Exchange Student.
See Herb Burkman for dates and details.



July 4th Parade Hotline is up and running - 972-385-7755 or
(Monday, July 5th) <http://july4.parkcitiesrotary.org/>



End Polio Now Night at the Ballpark, Sat, July 24, Angels vs
Rangers - www.texasrangers.com/district5790 (password: rangers)

ROTARY CONNECTED

LinkedIn Interesting **new thread**: What is your **EREY** story? Why do you support The Rotary Foundation?

Tweet of the Week: Staying at home this summer? You can still send a postcard. Get your **End Polio Now** postcards today. cot.ag/cs5dnj

f Interesting **new thread**: Rotary network brings districts together to fund heart surgeries for twenty Ugandan children.

YouTube RI has its own channel on YouTube offering a growing collection of videos and psas.

flickr Check out or add to RI's Flickr group often, www.flickr.com/groups/familyofrotary/

THOUGHTS ON...

America

In America any boy may become President and I suppose it's just one of the risks he takes.

~ **Adlai E. Stephenson**

America's greatest strength and its greatest weakness is our belief in second chances, our belief that we can always start over, that things can be made better. ~ **Anthony Walton**

The American, by nature, is optimistic. He is experimental, an inventor and a builder who builds best when called upon to build greatly. ~ **John F. Kennedy**

There's the country of America, which you have to defend, but there's also the idea of America. America is more than just a country, it's an idea. An idea that's supposed to be contagious. ~ **Bono**

FOUNDATION FUNDERS

Our Funders for Next Week are

Barb Jeffries
Richard Jodry
Jess Johnson
Jarl Johnson

FAMILY of ROTARY

From Alana Stein 5/11/2010
To the Amazing Park Cities Rotary Club

I wish to thank your club and the members who reached out to me and my family. Mr. Dill and Elaine Allen, for their close contact during the loss of my brother, were so appreciated. Mr. Dill gave up so much personal time to assist my family.

I must also compliment your club. I was so

"impressed" by the song at the opening of the meeting. The men sang so strong and with spirit I could tell it was from the heart, not just routine.

I will be passing on to our local clubs about your great club and the kindness shown by your members.

Thank you, Phillip, for putting me in their hands.
Alana Stein

Inyokern Rotary Club, District 5240

A STORY FOR MEMORIAL DAY

Courage

You're a 19 year old kid. You're critically wounded and dying in the jungle somewhere in the Central Highlands of Viet Nam.

It's Nov. 14, 1965, Landing Zone X-ray. Your unit is outnumbered 8-1; the enemy fire is so intense, your Commanding Officer has ordered the MedEvac helicopters to stop coming. You're lying there, listening to the enemy machine guns and you know you're not getting out. Then - over the machine gun noise - you faintly hear that sound of a helicopter. You look up to see a Huey coming in. But- it doesn't seem real; no MedEvac markings are on it.

Capt. Ed Freeman is coming in for you. He's not MedEvac, so it's not his job, but he heard the radio call and decided he's flying his Huey down into the machine gun fire anyway.

Even after the MedEvacs were ordered not to come, he drops it in and sits there in the machine gun fire, as they load 3 of you at a time on board. Then he flies you up and out through the gunfire to

the doctors and to safety. And he kept coming back! 13 more times!! He brought water and ammunition in and took all the wounded out. No one knew until the mission was over that he had been hit 4 times in the legs and left arm. Medal of Honor Recipient Captain Ed Freeman, USAF, died at the age of 80 in Boise, ID. **Remember.**

Thanks to Elaine Allen for this story!

Happy Birthday

Dennis Harrison 5.28
Brad Rejebian 5.28
Dick Orrock 5.29
Dudley Rouse 5.29
David Owen 6.1

CNC HOME CARE
Established in 1994
Assisted Aging • Home Management • Social Activities

CHRISTIAN F. CLAUSEN, MBA, CMC, RG-NGF
ADMINISTRATOR

8111 Preston Road, Suite 415
Dallas, Texas 75225

FUGRO
CONSULTANTS, INC.

2880 Virgo Lane
Dallas, Texas 75229
Phone: 972-484-8301
Fax: 972-620-7328
Email: rpatton@fugro.com

ROBERT S. PATTON, P.E.
Senior Consultant

Morgan Buildings & Spas, Inc.

From Our Factory to You
for Over 40 Years

ALAN WINN
Corporate Counsel

2800 McCree Road
Garland, TX 75041
P.O. Box 462088
Garland, TX 75048
(800) 950-0321
Direct (972) 864-7326
FAX (972) 864-7312
e-mail: alanwin@morganusa.com

ELLIOTT'S HARDWARE
Making hardware easy.

DALLAS: Maple at Motor 214-634-9900
PLANO: Coit at W. Park 972-312-0700
MESQUITE: Kearney at Galloway 214-324-5087

NOW OPEN WEEKDAYS 8-8 • SATURDAY 9-5
Visit anytime at elliottshardware.com

SLEEPER SEWELL

WILLIAM E. SLEEPER, CPCU, CLU, ARM, AAI
VICE CHAIRMAN

direct: 972.419.7507
bill.sleeper@sleepersewell.com

Sleeper Sewell Insurance Services, Inc.
A division of ANBTX Insurance Services, Inc.
main: 972.419.7500 fax: 972.419.7555
12400 Coit Road, Suite 1100
Dallas, Texas 75251-2039
www.sleeperssewell.com

RLG

RAYMOND L. GOODSON JR., INC.
CONSULTING ENGINEERS

David M. Goodson, P.E.
Stuart A. Markussen, P.E., R.P.L.S.

Suite 300, LB 17 • 5445 La Sierra • Dallas, Texas 75231-4138
214/739-8100 • Fax 214/739-6354

SPARKMAN/HILLCREST
FUNERAL HOME • CEMETERY • FLORAL SHOP

ROGER DIEBEL
FAMILY SERVICE

7405 W. NORTHWEST HIGHWAY
DALLAS, TEXAS 75225
TELEPHONE: 214-363-5401
FAX: 214-368-2388
CELL: 972-800-9095
EMAIL: roger.diebel@sci-us.com

Dignity

Rob Banes, CPA

WAGNER, EUBANK & NICHOLS, L.L.P.
Certified Public Accountants

The Berkshire at Preston Center
5950 Berkshire Lane, Suite 300
Dallas, Texas 75225
Ph: (214) 692-6800
Fax: (214) 692-7844
rbanes@wencpa.com

Park Cities Dental Associates

3110 Webb Avenue
Suite 300
Dallas, Texas 75205
214-528-7870

Roy S. Washburn, D.D.S., F.A.G.D.
Philip E. Lindley, D.D.S.

JAMES V. ROBERTS
BOARD CERTIFIED - ESTATE PLANNING AND PROBATE LAW
TEXAS BOARD OF LEGAL SPECIALIZATION

2200 ONE GALLERIA TOWER
13355 NOEL RD., L.B., 48
DALLAS, TEXAS 75240-1518
TELEPHONE: (214) 528-2822
FAX: (214) 528-3110
JIM@JAMESVROBERTS.COM

GPM GLAST, PHILLIPS & MURRAY
ATTORNEYS AND COUNSELORS

WILLIAM L. SIEGEL
RICHARD BARRETT-CUETARA
DREW N. BAGOT
ATTORNEYS AT LAW

COWLES & THOMPSON

Attorneys & Counselors

901 Main Street, Suite 3900
Dallas, Texas 75202
TEL 214.672.2000 FAX 214.672.2020

J. Marshall Weaver

CANNON DEVELOPMENT, Z

7557 Rambler Road, Suite 721
Dallas, Texas 75231
(972) 239-1060
Fax (972) 934-8694
mweaver@cannoninc.net

Unique's ONE HOUR
AIR CONDITIONING & HEATING.
Always On Time... Or You Don't Pay A Dime!..

Steve Rothacker
CEO

1510 Stevens Street / Dallas, TX 75218
Cell: (972) 400-0833 / Phone: (214) 319-9507 / Fax: (214) 328-0585
steve.rothacker@onehourair.com • www.onehourair.com

ROACH HOWARD SMITH & BARTON
...an Assures Global Partner

Karen K. Farris, CPCU, ARM
President & CEO
kfarris@rshb.com

Leroy Howard
Founder
lhoward@rshb.com

8750 N Central Expressway Suite 500 Dallas, Texas 75231-6458
972-744-2701 Fax 972-231-1368 www.rshb.com

ASTRO
Graphics

PRINTING
PUBLISHING
ADVERTISING
GRAPHIC DESIGN

Dennis Devenport
972.644.7676

www.astro-graphics.com

neighborhood dining at its best
in Snider Plaza

Amore Italian
Peggy Sue BBQ
Cisco Grill

Marc and Susan Hall

Sungate Solar
Renewing Tomorrow,
Today...

Bill Kelly

Bill@SungateSolar.com
(214) 908-9599

Greg Pape
Broker Associate

Park Cities Office
5950 Sherry Lane, Suite 110
Dallas, Texas 75225

214.696.8877
Cell: 214.546.4066
Voicemail: 972.380.7885
Fax: 214.691.7779
gregpape@att.net

We Gratefully Acknowledge

CHARLIE POLLAN
972-239-7201

INTERNATIONAL FENCE INDUSTRY ASSOCIATION
Quality Fence Company

8605 Sovereign Row
Dallas, Texas 75247
Wood Decks Overhead Structure
Wood Benches
All Types of Wood Fences
Chain Link

for Supporting The Hub

QUALITY FENCE INDUSTRY ASSOCIATION
Quality Fence Company

CHARLIE POLLAN
972-239-7201

8605 Sovereign Row
Dallas, Texas 75247
Wood Decks Overhead Structure
Wood Benches
All Types of Wood Fences
Chain Link

Kathleen's sky diner

Kathleen & Robert Ellington
4424 Lovers Lane • University Park, Texas 75225
214-691-2355

ENTRUST CAPITAL ADVISORS
—Sellers Representation, Mergers & Acquisitions—

Dr. L. Nolan Duck, CBI
Partner

2425 N. Central Expressway, Suite 200 • Richardson, Texas 75080
Office 972.664.0400 • Cell 972.358.0321 • Fax 972.664.0401
NolanDuck@EntrustCap.com • www.entrustcap.com

NEATHERY ELECTRIC, INC.

Security Cameras
Home Theater
Computer/Data Services
Electrical & Lighting

www.neatheryelectric.com
214-691-8844

Bill Neathery

COMMUNITIES FOUNDATION of TEXAS

Bringing visionary philanthropists
and worthy causes together

5500 CARUTH HAVEN LANE • DALLAS, TEXAS 75225
(214) 750-4222 • www.cftexas.org

DAVE PERRY-MILLER & ASSOCIATES

Barbara Barney

Direct 469.371.7777 Voice Mail 972.949.4253
Email barbara@daveperry-miller.com

5500 Prentiss Road Suite 200 Dallas TX 75205
Office 214.526.6600 Fax 972.949.4253
www.daveperry-miller.com

In top 10 Producers
for Highland Park Office

UP&OPEN IMAGING
The Stand-Up MRI

Melissa Rench
Director of Operations
mrench@upandopenimaging.com

1360 W. Campbell Rd., Suite 122
Richardson, TX 75080
ph. 972-479-9500
fax. 972-479-9544
www.upandopenimaging.com

Mike Jarrell, LUTCF, CIC
Insurance and Financial Services Agent

FARMERS

Auto • Home • Life • Business
6500 East Mockingbird Lane, Ste 100
Dallas, TX 75214
Bus: 214-821-9687 214-908-7544 cell
Fax: 214-821-9913
mjarrell@farmersagent.com

Texas Health Presbyterian Foundation
Healing Hands. Caring Hearts.™

Kristine Christlieb
8440 Walnut Hill Lane, Suite 800, LB6
Dallas Texas 75231
ph. 214-345-2030
www.texashealth.org
kristinechristlieb@texashealth.org

RJA Construction, LLC
General Contractor

Billy Rousseau
Sales & Marketing

PO Box 601632
Dallas, Texas 75360
Tel: 972.804.5540
Email: billy@rjadallas.com
Website: www.rjadallas.com

Edward Jones
MAKING SENSE OF INVESTING

Dax A. Seale
Financial Adviser

Park Cities - Dallas
9400 N Central Expressway
Suite 1309
Dallas, TX 75231
Bus. 214-750-3672
Fax 877-469-2490
dax.seale@edwardjones.com
www.edwardjones.com

J. HERBERT BURKMAN & ASSOCIATES
ECONOMICS RESEARCH

J. HERBERT BURKMAN, Ph.D.

2501 Oak Lawn Avenue, Suite 560
Tel: 214.443.0664

Dallas, Texas 75219
Email: jherb100@aol.com