



THE HUB

The Rotary Club
of Park Cities

Volume 76, Number 3

www.parkcitiesrotary.org

July 26, 2024

Serving to Make a Difference Since 1948

TODAY'S PROGRAM

Program Chair of the Day: Nate Weymouth



Ashley Brundage Affordable Housing In Dallas

Ashley Owen Brundage, MSSW is the Chief Executive Officer of the Dallas Area Habitat for Humanity, committed to building a better Dallas through the transformative power of affordable homeownership. Ashley's vision for Habitat for Humanity includes strengthening our advocacy platform to create systems level change that will impact the housing crisis, development of innovative solutions to scale the availability of affordable housing, and strategically bringing together public and private partnerships to break the cycle of poverty and transform our communities.

Most recently, Ashley was the Executive Director of Housing Stability and Senior Vice President of Community Impact for United Way Dallas, where she worked for 17 years. As a fierce advocate for affordable housing and ending homelessness, Ashley was responsible for spearheading United Way's work in this space.

In April 2020, Ashley formed the Dallas Rental Association Collaborative (DRAC), a city-wide collaboration with 16 community-based organizations, resulting in a contract award from the City of Dallas/CARES Act funding of almost \$40 million to United Way. This effort kept 7,500 Dallas residents in their homes.

As the country shut down, Ashley launched North Texas Cares, a funders collaborative of 47 foundations and United Ways across 16 counties. This effort resulted in \$58.7M in grants to more than 1,000 different nonprofits.

Ashley also led the 2020 transformation and reconstitution of the Board of Directors for both Housing Forward (formerly Metro

Dallas Homeless Alliance) and the All Neighbors Coalition Continuum of Care. The results of which have returned more than \$100 million of federal, city, county and private dollars to the Continuum of Care. More importantly, it facilitated the creation of hundreds of housing units and the supportive services that has allowed our community to significantly reduce unsheltered homelessness.

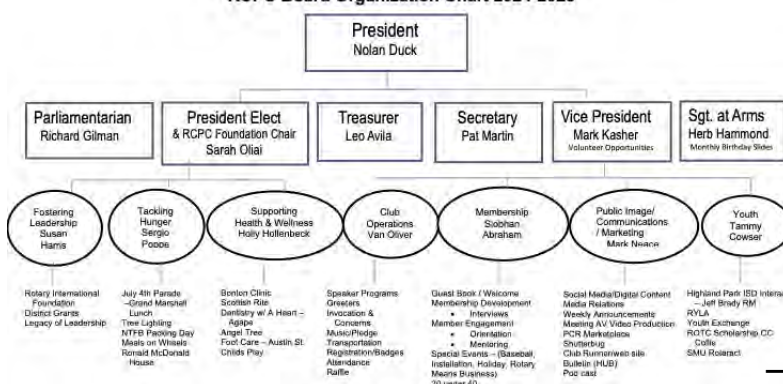
A committed community advocate, Ashley serves on several local boards, including serving as Chair of the Board of Directors for the Dallas Housing Coalition and as key spokesperson for the group advocating for increased city bond funding into affordable housing. She also serves on the Board of HousingForward, The All Neighbors Coalition, and the DFW Housing Consortium.

Ashley is a trusted resource for City of Dallas Staff and City Council and has served in leadership roles for several city commissions. She was appointed to the 2016 City of Dallas Homelessness Commission, recently completed her service to the Economic Development and Housing Subcommittee of the 2024 City of Dallas Bond Task Force and currently serves on the Dallas Area Partnership for Ending and Preventing Homelessness.

A native Texan, Ashley grew up in Coppell and graduated from Coppell High School. She majored in psychology at Texas A&M University, has her Master's in Social Work from The University of Texas at Arlington, and is a member of Leadership Dallas Class of 2019. She is married to Chris and is the proud momma of Owen and Mary.

RCPC IN ACTION

RCPC Board Organization Chart 2024-2025



President Nolan Duck
Parliamentarian Richard Gilman
President Elect & RCPC Foundation Chair Sarah Olai
Treasurer Leo Avila
Secretary Pat Martin
Vice President Mark Kasher
Sgt. at Arms Herb Hammond
Fostering Leadership Susan Harris
Tackling Hunger Sergio Pozos
Supporting Health & Wellness Holly Hollenbeck
Club Operations Van Oliver
Membership Abraham
Public Image/Communications / Marketing Mark Newkirk
Youth Tammy Cowser
Rotary International Foundation District Grants Legacy of Leadership
July 4th Parade - Grand Marshal Lunch Time Lighting NTFB Paving Day Meals on Wheels Ronald McDonald House
Benton Clinic: Screenings Rite Denbury at A Heart - Right Angel Tree Foot Care - Austin St. Childs Play
Speaker Programs: Outreach Invitation & Concerns Music/Pledge Transportation Registration/Badges Attendance Raffle
Guest Book / Welcome Membership Development Interviews Member Engagement Orientation Mentoring Special Events - (Bababul Installation, Holiday, Rotary Means Business) 20 under 40
Social Media/Digital Content Media Releases Weekly Announcements Meeting AV Video Production PCB Materials Shutterbug Club Runnersweir site Bulletin (HUB) Pac case
Highland Park ISD Internship - Jet Body RM RVLA Youth Exchange ROTC Scholarship CD Collie SMU Rowdier

Strategic Partner Relationship Managers:

- NTFB – Susan Glen
- Salvation Army – Eric Heitkamp
- Agape Clinic – Richard Stanford
- Bonton Farms – Karen Farris
- Austin Street – Elisa Garcia

Director at Large – Barb Jeffries
→ Immediate Past President – Jeff Sheehan

Be a Vibrant and Visionary Model of Service Above and Beyond Self

LASTWEEK

Presiding: **Nolan Duck**
 Invocation/ Pledge: **Cleve Clinton**
 MarketPlace Advertiser: **Mark Kashar**
 highlights **Mark Neace**
 Photographer: **Barb Jeffries**
 Speaker: **Rick Hart, SMU's Athletic Director**
 Program: **SMU's Transition to the ACC**



President **Nolan Duck** called the meeting to order. PP **Cleve Clinton** gave the invocation, and then led the Pledge of Allegiance and "The Star Spangled Banner."

President **Nolan** asked for Happy Bucks. **Nate Weymouth** said he would soon be raising money to run for office. **Kathleen Klaviter** said they had served seventy-eight meals at Ronald McDonald House. She is fine after being in a car wreck that totaled her car. **Mark Neace's** mother is much better and will be able to go to her family reunion.

President **Nolan** then introduced visitors and guests. One visiting Rotarian has moved to Dallas and is looking for a new club.

PP **Greg Pape** reported that in the 2023-24 year RCPC members contributed over \$38,000 to the RI Foundation. The club also reached an all-time high of twenty-three Paul Harris Society members who donate \$1,000 or more every year. Since RCPC was founded in 1948, over \$1,115,000 had been contributed by members. He recognized **Eric Harrison** with his first Paul Harris pin and certificate. He then recognized **Kathleen Klaviter** as a second level contributor.



VP **Mark Kashar** introduced our MarketPlace advertiser of the week, **Mark Neace**, who brought a video to introduce his business, SyncLab Media.

VP **Mark** then asked for members to sign up for the volunteer opportunities for the many projects the club does all year. **Siobhan Abraham** emphasized that the club needs to continue to grow our membership. She asked that we fill out her survey about the strengths of our club.

August						
S	M	T	W	Th	F	S
				M	Mtg	
4	M	M	M	M	Mtg	RMB
11	FF	M	M	BD	Mtg	
18	Mc	M	M	M	Mtg	
25	M	M	M	M	NO Mtg	

Please remember

The family of former member **Roger Allspaugh** who has passed away.
Jeff Brady's brother who has been diagnosed with lymphoma.
Nolan Duck's sister who has been diagnosed with cancer.
 Please let us know your joys and concerns.

Kathleen Klaviter had the winning ticket for the raffle, but did not win the money. More money and fewer cards every week!

PP **Richard Stanford** introduced our speaker today, **Rick Hart**, SMU's Athletic Director. He said that he does not care if you are an alumni or not, we are all here in the Park Cities and Dallas. He thinks the stronger the University is and the better the athletic program is, it shines a light on the community. He said that his own children attended SMU, and that when he recruits and talks to families, he emphasizes that they consider the students as sons and daughters. We want to teach them athletic skills, and also give them a quality education and a degree they can use to succeed in their own communities. They also want to help them find their passions and their career paths to differentiate themselves in the competitive work environment. The Life After Ball program provides mentors and internships after the athlete finds their career paths so they are successful in the long term. He went on to say that SMU has seventeen athletic programs, and they strive for comprehensive excellence. The graduation rate is in the top fifth percentile in the country. In the last decade all of the sports, except one, has won a conference championship. In the past year they had eight conference championships. Four other programs were second. SMU has great momentum. The leadership of the University is aligned around the vision for the future. This is not an athletics moment, it is a really big institutional moment. It is a big deal for the University in terms of prestige, reputation, research, retention and recruitment of faculty and staff. It will be a very bright light that will shine on SMU and the community. A lot of things have been done to prepare for this opportunity. They have sold more season tickets than at any time in recent history. They are working on the fan experience and want to sell out Ford Stadium and Moody Coliseum.



Our Mission

Building a legacy of good works and fellowship, we strive to:
 REACH those in need in partnership with others
 INSPIRE tomorrow's leaders with high ethical standards
 FOSTER lives of service above self
 – A supporting member of Rotary International

The Hub is the weekly newsletter of the Rotary Club of Park Cities (Dallas)

Betty Dawson, Editor

Shutterbug Committee
 Ley Waggoner, Chair

Bulletin/Internet Advertising
 Mark Neace, Interim Chair



OFFICERS and DIRECTORS 2023-2024

Nolan Duck, President ,
Sarah Oliai, President Elect
Mark Kashar, Vice President

Pat Martin, Secretary
Leo Avila, Treasurer

Directors

Siobaham, Membership
Susan Harris, Fostering Leadership

Van Oliver, Club Operations
Mark Neace, Public Image, Marketing, Communications

Tammy Cowser, Youth

Sergio Poppe, Tackling Hunger

Holly Hollenbeck, Fostering Health and Wellness

Barb Jeffries, At Large

Jeff Sheehan, Immed. Past President

Herb Hammond, Sgt-at-Arms

Richard Gilman, Parliamentarian

Laurie Aldredge, Club Administrator

8350 N. Central Expwy, Ste 1900
 Dallas, TX 75206

Office Phone: 469-242-9448

www.parkcitiesrotary.org



Stephanie Urchick
 Rotary Club of
 McMurray, PA, USA

President, Rotary International
 www.rotary.org

Regina Edwards, RC of
 Carrollton-Farmers Branch
 Governor, District 5810
 www.rotary5810.org



A=Agape Health Serv Day

BD= Brd of Dirs Mtg, 8am

BF=Bonton Farm

Cn=PCR Connect Event.

CP=ChildsPlay Work Mtg-Jill Jordan.

D=District 5810 Event

DH=Dentistry with a Heart- Michael Rainwater

F=Fellowship Event

FF=RCPC Foundation

Fund Mtg- Ed Fjordbak

FT=NTFB Truck.

FB=NTFB Evt- Susan Glen

In=Interact Special Project 8 am - Tracy Gomes.

LL=Legacy of Leadership

M= Meals on Wheels, Jim Weichel

various days and times

Mn= Mentoring at Hillcrest HS

various days and times

Mc=Ronald McDonald House

1 x/mo-Kathleen Klaviter

NM=New Member Event

Pr= Program Committee Mtg

RL=Readers2Leaders-various

days, times- Rob Levy

Rct=Rotaract- Ruth Alhaili.

SP=Strategic Planning Mtg

SpE=Special Service Event

VA=Veterans Support-

UPCOMING PROGRAMS



**Aug. 2 Christopher Pointsatt
DFW Airport**



**Aug. 9 Dr. Mike Rockwood
Highland Park Independent School District**



**Aug. 16 Ross T. Guieb
Bush Combat Development Complex**



**Aug. 23 DG Regina Edwards
District 5810**

CLUB ANNOUNCEMENTS

Please note that RCPC meetings and other events are public events where photos and video are customarily taken. By attending you are consenting to free use of your likeness on RCPC and related websites, social media, streaming video, emails, newsletters and similar methods.

Have a Great Idea for a Speaker? Your ideas are needed! Send your ideas with the details to Richard Stanford.

Help Wanted! At ANY RCPC Event or Project. Take a few pictures, include a few sentences (who, what, when, where and WHY) and send to Betty for The Hub

RI Foundation: \$100 (or more) Every Rotarian Every Year! See Greg Pape.

RCPC Foundation: \$100 (or more). See Birthdays below, then Van Oliver.

Attendance Rule Change. For those wanting to maintain Perfect Attendance, make-ups may now be completed within a year. RI is no longer tracking attendance.

Like Us! <https://www.facebook.com/pages/Rotary-Club-of-Park-Cities/115439238516325>

ROTARY CONNECTED



<http://bit.ly/RCPCfacebook>



<http://bit.ly/RCPC/linkedin>



<http://bit.ly/RCPC/twitter>



##parkcitiesrotary <http://bit.ly/RCPCyoutube>



<http://bit.ly/RCPCgoogleplus>

Miss a Meeting? Watch it on YouTube or as an event on Facebook!



<http://bit.ly/RCPCyoutube>

<https://www.facebook.com/events/>

Share Rotary! Post on your social media when you're at a meeting or event. Use our hashtags!

Like and Follow us on Social Media: Website:

<https://parkcitiesrotary.org/>

Facebook: www.facebook.com/RotaryClubOfParkCities

YouTube: www.youtube.com/channel/UCf4ZH-2nwIscW8XNTnsbonw

LinkedIn: www.linkedin.com/company/park-cities-rotary-club/?viewAsMember=true

Make a post about or while at Rotary and use these hashtags



#PeopleOfAction



#parkcitiesrotary



#district5810proud



#goodthingshappeneveryfriday

THOUGHTS ON...

Home

Coming home from very lonely places, all of us go a little mad: whether from great personal success, or just an all-night drive, we are the sole survivors of a world no one else has ever seen.

~ John le Carre

Mid pleasures and palaces though we may roam,
Be it ever so humble, there's no place like home.

~ John Howard Payne

A mind, like a home, is furnished by its owner, so if one's life is cold and bare he can blame none but himself.

~ Louis L'Amour

The most important work you and I will ever do will be within the walls of our own homes.

~ Harold B. Lee

A good home must be made, not bought.

~ Joyce Maynard

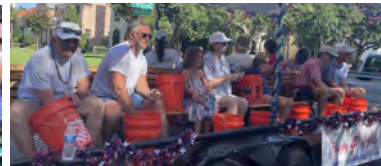
My home is not a place, it is people.

~ Lois McMaster Bujold

If there was strife and contention in the home, very little else in life could compensate for it.

~ Lawana Blackwell

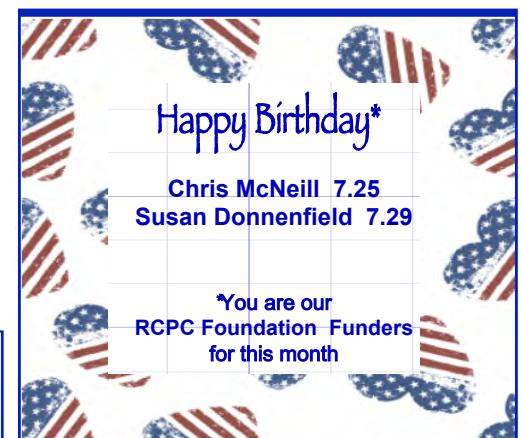
RCPC IN ACTION (continued from last week) More Parade Pics



HE WHO LAUGHS, LASTS



This is a rare photo of a mother vise-grip feeding her baby wrenches. Isn't nature really amazing?



The Hub is printed by
Minuteman Press

7010 Greenville 75231 • 214.691.6377

Rotary Club of Park Cities Market Place

 <p>GRAY REED & MCGRAW, P.C. Board Certified in Civil Trial Law By the Texas Board of Legal Specialization</p> <p>Cleve Clinton Shareholder 1601 Elm Street Suite 4600 Dallas, Texas 75201 P: 214.954.4135 D: 469.320.6032 F: 214.953.1332 cclinton@grayreed.com www.grayreed.com</p>	 <p>RICHARDSON TIMBERS, LLC <i>Timber Harvest Since 1950</i></p> <p>Lynn O. Surls</p>	<p>DBG Advisors™ Determine, Build – Get Full Value</p> <p>Dr. Nolan Duck, CEO M&A Advisor – Board Certified Broker – Real Estate Broker Certified Exit Planning Advisor – Certified Value Builder</p> <p>801 E. Campbell Rd. • Ste 250-L • Richardson, TX 75081 Office 972-200-0991 • Cell 972-358-0321 nolan@dbgadvisors.com • www.dbgadvisors.com</p>
 <p>NAVIGATION FINANCIAL GROUP Happy Franklin, AWMA, CRPS, AAMS, CDFA Wealth Planner</p> <p>15770 North Dallas Parkway, Suite 650, Dallas, TX 75244 D 214.217.5825 • C 214.621.4596 hfranklin@navigationfinancial.com www.navigationfinancial.com • www.happyfranklin.com</p>	 <p>Brent Cooper - State Farm Agent brentcooper.org</p>  <p>Tania Boughton Business Development Tania@kidsarewhy.com</p> <p>8201 Preston Rd Ste. 120 Dallas, TX 75225 Office: 214.987.1995 Fax: 214.987.2913 G f yelp: in</p>	 <p>RLG CONSULTING ENGINEERS <i>Where visions meet solutions</i></p> <p>David M. Goodson, P.E. Stuart & Markussen, P.E. & P.L.L.C.</p> <p>12001 N. Central Expressway, Suite 300, Dallas, TX 75243 (214) 739-8500 • Fax (214) 739-9354 www.rlginc.com</p>
 <p>OLIAI LAW FIRM, PLLC</p> <p>SARAH E. OLIAI Attorney at Law <i>Board Certified in Estate Planning and Probate Law</i></p> <p>4521 San Jacinto Dallas, Texas 75204 soliai@olialawfirm.com 214.784.5077 www.estateplandallas.com</p>	 <p>People Newspapers <i>Park Cities People • Preston Hollow People</i></p> <p>"THE BEST COMMUNITY NEWSPAPER IN TEXAS" <i>Serving Park Cities since 1981</i></p> <ul style="list-style-type: none"> • Award-winning community news • Best demographics • 100% coverage of the Park Cities <p>214.739.2244 parkcitiespeople.com An affiliate of D</p>	 <p>Synclab Media VIDEO MARKETING & CONSULTING synclabmedia.com</p> <p>Mark Neace (469) 358-1444 mark@synclabmedia.com</p> <p>@synclabmediastudio YouTube LinkedIn @neace Paul Harris Fellow 2016</p> 
 <p>CC YOUNG CELEBRATING 100 YEARS! SERVING SENIORS SINCE 1922</p>	 <p>SUSAN GLEN SVP Client Relations & Non-Profit Solutions</p> <p>susang@careermp.com 214.908.9981 www.CareerMP.com</p>  <p><i>Proudly a minority & woman owned firm</i></p>	 <p>Vista Bank MEMBER FDIC • EQUAL HOUSING LENDER</p> <p>Putting people first since 1912. vistabank.com</p>
 <p>State Farm Sells Life Insurance.</p> <p>Kathy L. Wall, Agent 214-350-2692 Kathy@KathyLWall.com</p>	<p>BARBARA BARNEY - REALTOR REALTOR®, MBA FROM SMU COX SCHOOL OF BUSINESS- REAL ESTATE AND FINANCE</p> <p>Allie Beth Allman & Associates A BERKSHIRE HATHAWAY AFFILIATE</p> <p>469.371.7777 cell 469.371.7777 direct barbara.barney@alliebeth.com DEGREE in INTERIOR DESIGN</p>	<p>Jason Graves 214.404.7787</p> <p>jason.graves@alliebeth.com jasonindallas.com jasongravesrealtor</p> <p>Allie Beth Allman & Associates A BERKSHIRE HATHAWAY AFFILIATE</p> 
<p>Thank you to</p> <p>KYLE MARMILLION</p> <p>for supporting The Hub</p>		
	<p><i>Thank you to all our Marketplace Advertisers</i></p> <p>We have spots available for the rest of 2024-25 Rotary Year.</p> <p>Purchase at the RCPC website "store" or with a check. Cost of the ad will be prorated during the year.</p> <p>To change or update your ad, send an updated digital Business Card to bedawson@swbell.net and to kyle.marmillion@protonmail.com.</p> <p>Questions? Ask Mark Neace at mark@synclabmedia.com</p>	