



THE HUB

The Rotary Club
of Park Cities

Volume 69, Number 43

www.parkcitiesrotary.org

June 15, 2018

Serving to Make a Difference Since 1948

TODAY'S PROGRAM

Program Chair of the Day: Tom Swift



Byron Cain

The Biography of the American Flag

As a lifelong "vexillologist", (that means a studier of flags), Byron has enjoyed their history, design, and connection to geography and geopolitics. Luckily, this ties into his passion for travel, and his ownership of a tour operating company, Heritage Tours. This company plans and escorts tours with a strong historical focus around the American Southeast and Southwest, and occasionally to Scotland and Luxembourg.

Since 1985 Mr. Cain has lectured periodically in the Continuing Education Department of Southern Methodist University in Dallas and at Brookhaven College on his primary specialty, the history and architecture of the Old South, especially Louisiana and Charleston. In addition he has spoken on these subjects be-

fore many organizations around the Dallas-Fort Worth Metroplex. Mr. Cain's interest in these subjects began as a youth growing up in Dallas when traveling with his family around Texas and Louisiana. With grandmothers in East Texas and Louisiana, he had plenty of opportunity to go exploring in those areas.

As emotion-wrought symbols, flags are enormously reflective of what they represent, be it a country, state, or other geopolitical area, or of a person, company or group. That means they are full of passion, history, personal meaning and drama.

For this Flag Day Celebration, Byron will focus on the evolution of the flag of the United States, as well as of its component states.

DISTRICT 5810 THIRTY YEARS OF WOMEN IN ROTARY EVENT

by Kathleen Klaviter

The 30 Years of Women in Rotary Luncheon at Brookhaven CC was a lovely District wide event thoughtfully arranged by the Carrollton-Farmers Branch Club. Our own DG First Lady **Lisa Amsberry** presiding.

At one point on the agenda, **Karen Farris** was called to the podium by **Lisa** to share her story on being one of the first women to join RCPC.

Later, we got to the recognition portion of the program and we played the "stand up, sit down" exercise. We all stood up and then sequentially sat down as the number of years were called out. In the end there were two people standing: **Karen Farris** and **Maryllyn Hargrave**



It was fun to note that our club has significant, long-time women members of Rotary in our club. One of our club's keys to success is the continuous long-time commitment of our members.

In closing the program, DG Rick Amsberry went to the podium. In a very endearing speech, Rick recognized Lisa as not only the First Lady but as his partner throughout his DG year. He presented her with a medal and she received a standing ovation.

Earlier in the program, the First Lady presented a check for \$23,000.00 to AWARE for Alzheimer's support and assistance. This is the money she collected for her designated charity during this rotary year.

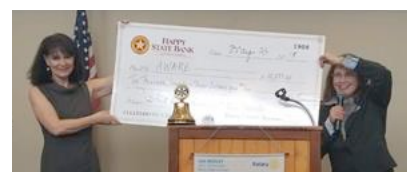


by Lisa Amsberry

We had a spectacular event at Brookhaven Country Club which was hosted by the RC of Carrollton-Farmers Branch. Our keynote speaker was Past District Governor, Lisa Herring, from San Antonio.

We celebrated the contributions of women in Rotary and the opportunities that women have to serve in various roles within and around the clubs. We selected three Rotary women to get their viewpoint of their Rotary experience and share with the audience.

Past President **Karen Farris** from Park Cities provided us her perspective as one of our early Rotarians to become a part of what once was an all-male organization. She provided the historic approach. Karen Maxwell, current president of the Commerce RC gave a current perspective of the challenges and the rewarding opportunities of personal growth as



a President serving (Cont. on pg 3)

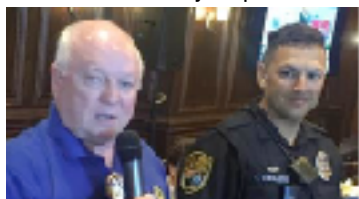
Be a Vibrant and Visionary Model of Service Above and Beyond Self

LAST WEEK

Presiding: PP **Tracy Gomes**
 Invocation: **Richard Stanford**
 Pledge: **Ley Waggoner**
 Photographer: **Ley Waggoner**
 Chair of the Day: **Marcia Zidle**
 Speaker: **New Members**
 Program: **Introductions**

PP **Tracy Gomes** called the meeting to order and asked us to check-in via Facebook. **Richard Stanford** gave the invocation. **Will Reppeto's** mother passed away. **Charlotte Hudgin** is very concerned about the volcanic activity, and she announced Rotary's sister group Shelter Box was providing emergency shelter. **Tom Swift** visited PP **Bill Sleeper**, and he's doing great! His trach had been removed, and if we could visit him we should.

Back the Blue: Bob Dill introduced Fernando Cabellero H.P. 1st responder and one of two motorcycle patrol men in HP. He



joined HPDPS in December of 2017. He has served in DeSoto,

Red Oak, and Cedar Hill. He is part of the Southern Region Response group.

Market Place Advertising: Presented by **Herb Ziev: Daniel J. Drabinski:** Agency Managing Director of Business & Estate Planning of Mass Mutual of DFW. He helps clients identify potential blind spots and helps develop a solid foundation of protection savings and growth.

Special Announcement: PP **Tracy Gomes** called on VP **Paul Pirok** and PE **John Gilchrist:** **John** announced he has accepted a year assignment to run a multi-million-dollar capitol campaign for a Children's Advocacy center in Redding CA. He will not be president next year as the position begins in July. While he is sad he won't be here, he is excited for the opportunities this bring. He announced **Paul Pirok** as the new president starting July 1st.

EVENTS CALENDAR

June						
S	M	T	W	Th	F	S
					Mtg	
3	M	M	M	VV	M	Mtg SpE
10	M	M	FH	M	Cn	Mtg
17	M	Mc	M	BD	M	Mtg
24	M	M	M	M	FH	Award Banquet

Please remember ...

PP **Bill Sleeper** is doing well. Please visit him if you can.

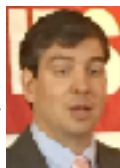
Will Reppeto's mother has passed away.

Please let us know your Joys or Concerns at- announcements@parkcitiesrotary.org

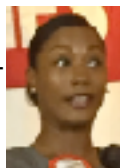
with thanks to Katt Massey for these Notes, and apologies for all that had to be trimmed to make it fit!

Marcia Zidle acted as the day's MC introducing our Howard Fitch New Member Speeches.

Jeff Sears: Jeff and his wife Murphy have 3 sons. Jeff is a financial planner and wealth manager for a company he leads, Fonden Oaks Capitol management. He was born and raised in the Park Cities area. He's a member of Highland Park United Methodist Church. He went to school at the University of North Carolina Chapel Hill. He received his MBA from UT Austin.



Kita Hobbs: Kita is from the DFW area. She is an Area Manager with Encore. She graduated from Texas A&M Commerce. She is currently pursuing her MBA. Her father was involved in the Rotary in Plano. With Encore she was able to see what community service was all about. When she was 20 she traveled to Beijing China. The trip exposed her to different cultures and it helped her appreciate what we have here. She is married to Warren and has a daughter London 2 going on 42 and a bonus daughter who is 20.



Jill Jordan: Retired Assistant City manager of the City of Dallas/Civil Engineering. On reflecting on her life, she shared experiences that lead on her life path. She oversaw for the city the new golf course, Texas Horse park, Audubon Center. Chain of Wetlands and flood control, Trammel system and gateway parks. She's had a strong bond with the Trinity for many years. She went to Vanderbilt for her undergrad, Harvard for graduate school. She is currently an Adjunct Professor at UT Arlington. She wants to give back and have people enjoy the parade as her family has. (cont. on pg 3)



Get Involved!

A=Agape Health Service Days

BD = Board of Dirs. Mtg, 7am

LaMadeleine, 75 & Mockingbird

Cn = PCR Connect Event.

CP = ChildsPlay Work Mtg

CC = Core Clubs Event

D = District 5810 Event

DH = Dentistry with a Heart

FR = Family of Rotary Event

F = Fellowship Event

FF = RCPC Foundation Fund

Mtg. See Cleve Clinton

FH = Fisher House. See Rob E

In-Interact Special Project

In-Interact at Hillcrest H.S,

8 am. See Bart Noble

M = Meals on Wheels (Differ-

ent teams on each day)

See Patsy Watson

Mn-Mentoring at Hillcrest HS

Mc = Ronald McDonald

House-See Jina McDaniel

NM = New Member Event

FT=NTFB Truck-Stan Wright

FB=NTFB Event

Pr = Program Committee Mtg

RU = Rotary University

SpE = Special Service Event

Web = For New Members

Our Mission

Building a legacy of good works and fellowship, we strive to:
 REACH those in need in partnership with others
 INSPIRE tomorrow's leaders with high ethical standards
 FOSTER lives of service above self
 - A supporting member of Rotary International

The Hub is the weekly newsletter of the Rotary Club of Park Cities (Dallas)
 Betty Dawson, Editor

Shutterbug Committee

Fred Speno, Chair

Bulletin/Internet Advertising

Shawn Foster, Chair



OFFICERS and DIRECTORS 2017-2018

Pam Carvey, President

John Gilchrist, President Elect

Paul Pirok, Vice President

Barb Jeffries, Secretary

Jeff McNaughton, Treasurer

Steve Franks, Asst. Treasurer

Brad Rejebian,

Humanitarian Outreach

Will Reppeto, Youth Outreach

George Burrell, Club Operations

Stan Carr, Institutional Outreach

Kathleen Klaviter,

Community Outreach

Tom Swift, Membership

Tom Swift, Marketing

Cleve Clinton, At Large

Tracy Gomes, Immed. Past President

Doug Means, Sgt-at-Arms

Karl Von Bieberstein,

Parliamentarian

Daniel Jacob, Webmaster

Laurie Aldredge, Club Administrator

6704 Snider Plaza, Dallas, TX 75205

Office Phone: 214-739-4170

Office Fax: 214/363-6980

Email: club@parkcitiesrotary.org

www.parkcitiesrotary.org



Ian H. S. Riseley

Sandringham,

Victoria, Australia

President, Rotary International

www.rotary.org

Rick Amsberry, Park Cities

Governor, District 5810

www.rotary5810.org



UPCOMING PROGRAMS



June 22 Natalie Gonnella-Platts
George Bush Institute

June 29 2018 Award Banquet
6:00pm-8:00pm at Lakewood Country Club

July 6 NO Noon Meeting
See You At the Fourth of July Parade

July 13 To Be Announced

ROTARY CONNECTED

Tweet with Tracy! Follow him at [@rotarytxman](https://twitter.com/rotarytxman)
<http://bit.ly/RCPFacebook>
<http://bit.ly/RCPCTwitter>
<http://bit.ly/RCPYouTube>
<http://bit.ly/RCPGooglePlus>
<http://bit.ly/RCPVimeo>
RCPC has its own channel. Miss a Meeting? Watch it Online!

Connect with Rotary International and District 5810!

LinkedIn RI: www.linkedin.com/groups?gid=858557&trk=hb_side_g
RI: <http://twitter.com/#!/rotary>
RI: www.facebook.com/rotary
Dist. 5810: www.facebook.com/RotaryDistrict5810
YouTube RI has its own channel on YouTube offering a growing collection of videos and psas.
flickr Check out or add to RI's Flickr group often, www.flickr.com/groups/familyofrotary/
Pinterest <http://pinterest.com/rotary/>
RI has Pinboards on major projects.
www.statigr.am/rotaryinternational
See RI's latest pictures via Instagram.

CLUB ANNOUNCEMENTS *Sign up at www.parkcitiesrotary.org*

Awards Banquet/ Fri, June 29, 5:30pm, at Lakewood Country Club.

Register and pay online. **This is a Meeting- NO Noon Meeting**

Pay Your Dues for 2018-2018. They are due June 30!

Have you signed up for the Fourth of July Parade? Every member is in the Parade Committee! Jobs available before, during and after the Parade

RI Foundation: \$100 (or more) Every Rotarian Every Year! See Greg Pape.

RCPC Foundation: \$50 (or more). See Birthday box below, then Doug Means. The **Rule of 85.** Attendance requirements change for those who have been members of a Rotary club for twenty years and whose age and membership total 85.

Like Us! <https://www.facebook.com/pages/Rotary-Club-of-Park-Cities/115439238516325>

The **Directory** is on line: Log in > Click on left side under My ClubRunner > View Club Directory or View Club Photo Directory. Other archives are at Club Documents

THOUGHTS ON ... *continued from previous pages*

The Flag

There is hopeful symbolism in the fact that flags do not wave in a vacuum. ~ **Arthur C. Clarke**

The flag is the embodiment, not of sentiment, but of history.

~ **Woodrow Wilson**

Standing as I do, with my hand upon this staff, and under the folds of the American flag, I ask you to stand by me so long as I stand by it. ~ **Abraham Lincoln**

The red and white and starry blue is freedom's shield and hope.

~ **John Philip Souza**

The American flag represents all of us and all the values we hold sacred. ~ **Adrian Cronauer**

The American flag is the most recognized symbol of freedom and democracy in the world.

~ **Virginia Foxx**

A thoughtful mind, when it sees a Nation's flag, sees not the flag only, but the nation itself.

~ **Henry Ward Beecher**

Ev'ry heart beats true 'neath the Red, White and Blue

~ **George M. Cohan**

Seth Hare: Seth runs a wealth management team with Merrill Lynch. He graduated from Texas Tech with a minor in accounting and major in finance. His first job was managing a \$14 million portfolio in a back room. He grew that to a team of 30 with 3,000 accounts worth \$2.2 billion. He and his wife Allison are highly involved in the Cystic Fibrosis Foundation due to her younger brother and sister having CF. They have 2 children.



Mike Petridis: Private Jet industry sales and operations and mergers and acquisitions. Mike received his MBA at SMU. He met Rotary through PP Phillip ten years ago. He grew up in Boston and went to college in Vermont. He has traveled to 58 countries. He visits Rotary Chapters when he is overseas, across the world. Of those places he has attended he finds that the Rotarians are true business leaders. They follow the example of the original 5 in Chicago.



('Women in Rotary' continued from pg 1) this year.

Finally, Dana DeVance, the incoming President of The Rotary Club of Dallas, shared her thoughts and excitement about the opportunity to serve and make a difference in the world through water programs in Africa.



Lisa Herring,
PDG- Dist 5840
(South Central TX)



Karen Maxwell,,
President-
Commerce RC



Dana
DeVance
PE- Dallas RC

*We gratefully acknowledge
ASTRO-GRAPHICS
for the partial funding of The Hub*

*Happy Birthday**

Steve Franks 6.17
Richard Stanford 6.17
Bill Kelly 6.18

*You are our RCPC
Fundors for this week

