



THE HUB

The Rotary Club of Park Cities

Volume 75, Number 38

www.parkcitiesrotary.org

June 05, 2026

Serving to Make a Difference Since 1948

TODAY'S PROGRAM

Program Chairs of the Day: Jill Jordan



Patrick M. Walsh, PhD, Admiral, US Navy (Ret.) 2026 Parade Grand Marshal

The Cristo Rey Dallas Board of Directors appointed Dr. Patrick Walsh the third President of Cristo Rey Dallas in April 2022. He was a member of a small team that established the foundation for the school opening in 2015, as the 29th school in the Cristo Rey Network.

Patrick Walsh is a co-founder of The First Watch Group, as a consultant in partnership with former business leaders in the Aerospace & Defense industry who have deep experience leading P&Ls that range from Small Businesses to Original Equipment Manufacturers, focused on leadership development, business growth, and team performance in the supply chain, logistics, and large-scale

program management. The First Watch Group builds the coalition to solve business challenges.

Prior to co-founding The First Watch Group, Pat was Vice President of The Boeing Company, (NYSE: BA), Global Services Navy-Marine Corps Services business. Prior to Boeing, Pat was the Senior Vice President/General Manager at iSIGHT Partners, a FireEye Company, (NASDAQ: FEYE), and President, Strategic Programs, Academic Partnerships, LLC.

Admiral (Ret.) Walsh was the 59th Vice Chief of Naval Operations, served as a member of the Joint Requirements (*cont. on pg 3*)

4th OF JULY PARADE

Our Previous Grand Marshals



2025
Jim Whorton



2024
Hon. Joel Williams, III



2023
Jan Edgar Langbein



2022
Donna G. Pierce



2020 & 2021
Laurie and Jim Hitzelberger



2019
Francie Moody-Dahlberg



2018
Karl Kuby



2017
Brad Bradley



2016
Mike and Marla Boone



2013
Leslie Melson



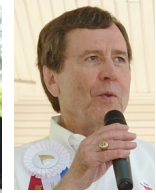
2014
Dawson Orr



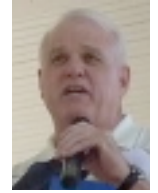
2013
Kirk Dooley



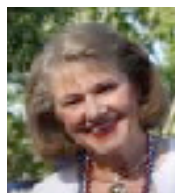
2012
Randy Allen



2011
Gerald Turner



2010
Darrell Fant



2009
Cathy Brice



2008
George Patterson



2007
Hon. John Roach



2006
Hon. Dan Branch



2005
Hon. Kay B. Hutchinson



2004
Hon. Barbara Hitzelberger



2003
Hon. Ed Wooten



2002
Bob Heard

Be a Vibrant and Visionary Model of Service Above and Beyond Self

LAST WEEK

Presiding: PE **Mark Kashar**
 Invocation and Pledge: **Scott McLaughlin**
 Advertiser of the Week: PP **Richard Stanford** and **C C Young**
 Photographer: **Van Oliver**
 Speaker: **Cal Jillson**, PhD, Professor,
 Southern Methodist University
 Program: **"Political Update"**

PE **Mark Kashar** called the meeting to order. **Scott McLaughlin** gave the invocation and then led the Pledge of Allegiance and "The Star Spangleg Banner." Several concerns were mentioned, including from **Monty Montero** who lives close to the apartment fire in Oak Cliff.

PE **Mark** asked for Happy Bucks and then asked for any visitors and guests to be introduced. A visitor from India brought a flag to exchange.



Mark Neace introduced our Marketplace Advertiser of the Week. PP **Richard Stanford** on behalf of C C Young Senior Living.

PE **Mark** asked for the raffle drawing. The holder of the winning ticket did not win the money. Better luck next week!

Jill Jordan gave an update on the Grand Marshal Lunch on June 5. She said that **Jeff Brady** would be interviewing Adm. Walsh. She asked that everyone arrive early at 11:30 and to RSVP so there will be enough food. **Alan Winn** reminded everyone to volunteer before, during or after the Parade. Everyone is needed!



PE **Mark** introduced our speaker today, Professor **Cal Jillson**. He began by saying that in the primary runoff the most interesting was for the Senate seat. There is an interesting new Democrat candidate, **James Talarico**, a member of the Texas House. He is young, articulate and has sincere religious convictions. If he runs a good race without serious mistakes, he could squeak out a Democrat win for the Senate. He is well funded. This year is shaping up to be difficult for Republicans; Midterms usually are hard for the party in power. Republicans want President Trump to talk about kitchen table issues, but he is more focused on foreign policy. **Ken Paxton** will have to run hard and both

Please remember and keep these families in your prayers.

Services for PP Rod Pirtle will be Thurs, June 4, 2026, at 1:00pm at Highland Park United Methodist Church in the sanctuary 3300 Mockingbird Lane, Dallas, TX 75205
 Fellow Rotarian **Walt Marcum** will be the presiding minister. **Reception to follow in Fellowship Hall**

John Morelock's funeral will be Monday June 8th at 4:00pm at St. Michael's and All Angels Episcopal Church, 8011 Douglas Avenue, Dallas, TX 75225..

Please let us know your concerns.

sides will have to puff their coalitions back together. It should be an entertaining race for Senate. The other race that will draw interest is the race for Texas Attorney General. **Mayes Middleton** who has been a State Senator, has a law degree he has used in his family's oil business, The Democrat candidate, **Nathan Johnson** has also been in the State Senate. He is from Dallas but may have difficulty raising money. That will be a more civilized race. The race for Railroad Commissioner will not be one you want to listen to. Texas leaders endorsed **Jim Wright** in the primary but **Bo French** won by one point. The Democrat candidate knows something about the oil and gas industry but is not well known. **Colin Allred** has won to be the Democrat candidate from one of the newly drawn house districts, and ran as a more moderate progressive than his opponent. In many states the more moderate Democrats are winning their primaries.



President Trump and Republicans did extraordinarily well in 2024, and have been gaining strength in The Valley and all along the southern border. Polling suggests that Hispanics are reverting back to their Democrat history. The redistricted seats will not all go to Republicans, but may still be won by Democrats. The U.S. House has been very close for the last six or eight years. It is very difficult to run the House when you have factions within the party. Closely contested races may go to the Democrats. It is looking like the Democrats may take the House. It is not clear what will happen in the Senate. Republicans may hold the Senate or gain seats.

Our Mission

Building a legacy of good works and fellowship, we strive to:
 REACH those in need in partnership with others
 INSPIRE tomorrow's leaders with high ethical standards
 FOSTER lives of service above self

The Hub is the weekly newsletter of the **Rotary Club of Park Cities** (Dallas)

Betty Dawson, Editor

Shutterbug Committee
 Ley Waggoner, Chair

Bulletin/Internet Advertising
 Mark Neace, Interim Chair

ROTARY CLUB

DALLAS TEXAS

PARK CITIES

OFFICERS and DIRECTORS 2025-2026

- Sarah Oliai, President**
- Mark Kashar, President Elect**
- Eric Harrison, Vice President**
- Patti Schaub, Secretary**
- Paul Pirok, Treasurer**
- Directors**
- Susan Harris, Fostering Leadership**
- Sergio Poppe, Tackling Hunger**
- Herb Ziev, Supporting Health and Wellness**
- Van Oliver, Club Operations**
- Siobhan Abraham, Membership**
- Mark Neace, Public Image, Marketing, Communications**
- Jill Jordan Youth**
- Happy Franklin, At Large**
- Nolan Duck, Immed. Past President**
- Jack Carpenter, Sgt-at-Arms**
- Richard Gilman, Parliamentarian**
- Laurie Aldredge, Club Administrator**

8350 N. Central Expwy, Ste 1900
 Dallas, TX 75206
 Office Phone: 469-242-9448
 parkcitiesrotary.org

Francesco Arezzo

Rotary Club of Ragusa, Italy
 President of Rotary International
 www.rotary.org

UNITE FOR GOOD





Mary Bedosky
 RC of Richardson East
 Governor, District 5810
 www.rotary5810.org



| June | | | | | | |
|------|---|----|---|----|------------|------|
| S | M | T | W | T | F | S |
| | M | M | M | M | GM Mtg | |
| 7 | M | M | M | M | Mtg | |
| 14 | M | Mc | M | BD | Mtg | |
| 21 | M | M | M | M | Awards Mtg | Dist |
| 28 | M | M | | | | |

- A=Agape Health Serv Day**
- BD= Bld of Dirs Mtg, 8am**
- BF=Bonton Farm**
- CC=Crossroads Com. Pabtry**
- Cn=PCR Connect Event.**
- CP=ChildsPlay Work Mtg-Jill Jordan**
- D=District 5810 Event**
- DH=Dentistry with a Heart- Michael Rainwater**
- F=Fellowship Event**
- FF=RCPC Foundation Fund Mtg- Ed Fjordbak**
- FC= Foot Care Clinic**
- FB=NTFB Event-Susan Glen I**
- CM Cafe Momentum**
- LL=Legacy of Leadership**
- M= Meals On Wheels- Jim Weichel various days and times**
- Mn= Mentoring at Hillcrest HS various days and times**
- Mc=RonaldMcDonaldHouse 1 x/mo-Kathleen Klaviter**
- NM=New Member Event**
- Pr= Program CommitteeMtg**
- RL=Readers2Leaders-various days, times- Rob Levy**
- Rct=Rotaract- Ruth Alhilali.**
- SP=Strategic Planning Mtg**
- SpE=Special Service Event**
- VA=Veterans Support-**

UPCOMING PROGRAMS

- 
June 12 **Lynn McBee**
TBA - It will be interesting!
- 
June 19 **Trey Gulledge and Abby Lautin**
Envision
- 
June 26 **Installation Dinner**
Welcome Our New Officers and Directors
- 
July 3 **NO Noon Meeting**
Go to the Parade!

ROTARY CONNECTED

-  <http://bit.ly/RPCFacebook>
-  <http://bit.ly/RPCLinkedIn>
-  <http://bit.ly/RPCTwitter>
-  **##parkcitiesrotary** <http://bit.ly/tube> <http://bit.ly/tube>
-  [RCPCgoogleplus](#)

Miss a Meeting? Watch it on YouTube or as an event on **Facebook!**

 <http://bit.ly/RPCyoutube>
<https://www.facebook.com/events/>

Share Rotary! Post on your social media when you're at a meeting or event. Use our hashtags!



Like and Follow us on Social Media: Website: <https://parkcitiesrotary.org/>

Facebook: www.facebook.com/RotaryClubOfParkCities

YouTube: www.youtube.com/channel/UCf4ZH-2nwIscW8XNTnsbnw

LinkedIn: www.linkedin.com/company/park-cities-rotary-club/?viewAsMember=true

Make a post about or while at Rotary and use these hashtags

-  **#PeopleOfAction**
-  **#parkcitiesrotary**
-  **#district5810proud**
-  **#goodthingshappeneonfridays**

CLUB ANNOUNCEMENTS

Please note that RCPC meetings and other events are public events where photos and video are customarily taken. By attending you are consenting to free use of your likeness on RCPC and related websites, social media, streaming video, emails, newsletters and similar methods.

Have a Great Idea for a Speaker? Your ideas are needed! Send your ideas with the details to Richard Stanford.

Help Wanted! At ANY RCPC Event or Project. Take a few pictures, include a few sentences (who, what, when, where and WHY) and send to Betty for The Hub

RI Foundation: \$100 (or more) Every Rotarian Every Year! See Greg Pape.

RCPC Foundation: \$100 (or more). See Birthdays below, then Jack Carpenter.

Attendance Rule Change. For those wanting to maintain Perfect Attendance, make-ups may now be completed within a year. RI is no longer tracking attendance.

Like Us! <https://www.facebook.com/pages/Rotary-Club-of-Park-Cities/115439238516325>

THOUGHTS ON . . .

Liberty

The preservation of the sacred fire of liberty and the destiny of the republican model of government are justly considered deeply finally, staked on the experiment entrusted to the hands of the American people.

George Washington

Those who would give up essential liberty to purchase a little temporary safety deserve neither liberty nor safety.

~ **Benjamin Franklin**

There is danger from all men. The only maxim of a free government ought to be to trust no man living with power to endanger the public liberty.

~ **John Adams**

I would rather be exposed to the inconveniences attending too much liberty than to those attending too small a degree of it.

~ **Thomas Jefferson**

He that would make his own liberty secure, must guard even his enemy from oppression; for if he violates this duty, he establishes a precedent that will reach to himself.

~ **Thomas Paine**

I know not what course others may take, but as for me, give me liberty, or give me death

~ **Patrick Henry**

PARADE GRAND MARSHAL (cont.)

Oversight Council (JROC) and provided testimony to the House Armed Services Committee, Senate Armed Services Committee, the Senate Foreign Relations Committee and the Seapower Subcommittee on matters related to the Readiness, Manpower and Acquisition accounts for the Department of the Navy. He held significant leadership positions over the course of a 34-year career as a carrier-based, combat fighter pilot and former Slot Pilot for the Navy Flight Demonstration Squadron, the Blue Angels, to include Chairman, Department of Leadership, Ethics & Law at the U.S. Naval Academy, and command of Strike/Fighter Squadron 105, Carrier Air Wing 1, Carrier Strike Group 7, NAVCENT/US FIFTH Fleet and finally as Commander, US Pacific Fleet, responsible for the largest naval force in the world where he led the US military response to the Great Eastern Japan Earthquake, tsunami, and radiation triple catastrophes.

He holds a Bachelor of Science degree from the US Naval Academy, a Master of Arts in Law & Diplomacy, a Doctor of Philosophy (with Distinction) in International Relations from the Fletcher School of Law & Diplomacy, Tufts University, and was a

White House Fellow assigned to the Executive Office of the President in the Office of Management & Budget.

Pat served as a Senior Advisor to Oliver Wyman, Inc., and now serves as Director and Chairman of the Technology Committee for Austin Industries, an Outside Director for CAE, USA, Inc., the Chairman of the Dallas Committee on Foreign Relations, and a Senior Fellow at Southern Methodist University.

He resides in Dallas with his wife, Andy Kaye, of more than 33 years. They have 2 grown children, Jennifer, a member of the 2012 Ursuline state championship basketball team and a walk-on at the College of the Holy Cross, and Matthew, a 2018 Dallas Jesuit graduate and business/finance senior at Loyola, Marymount University.

Happy Birthday*

| | |
|-----------------|------|
| Faiz Nazary | 6.6 |
| David Waiyaki | 6.6 |
| Kathy Wall | 6.7 |
| John Brown | 6.8 |
| Bud Naifeh | 6.9 |
| Roger Freidline | 6.10 |

*You are our RCPC Foundation Funders for this month

The Hub is printed by
Minuteman Press
 7010 Greenville 75231 • 214-691-6377

Rotary Club of Park Cities Market Place

| | | |
|--|--|---|
|  <p>Gray Reed & McGraw, P.C. Board Certified in Civil Trial Law By the Texas Board of Legal Specialization</p> <p>Cleve Clinton Shareholder 1601 Elm Street Suite 4600 Dallas, Texas 75201 P: 214.954.4135 D: 469.320.6032 F: 214.953.1332 cclinton@grayreed.com www.grayreed.com</p> |  <p>Richardson Timbers, LLC <i>Custom Timbers Since 1960</i></p> <p>Lynn O. Surls</p> | <p>DBG Advisors™ Determine, Build – Get Full Value</p> <p>Dr. Nolan Duck, CEO M&A Advisor – Board Certified Broker – Real Estate Broker Certified Exit Planning Advisor – Certified Value Builder</p> <p>801 E. Campbell Rd. • Ste 250-L • Richardson, TX 75081 Office 972-200-0991 • Cell 972-358-0321 nolan@dbgadvisors.com • www.dbgadvisors.com</p> |
|  <p>NAVIGATION FINANCIAL GROUP Happy Franklin, AWMA, CRPS, AAMS, CDFA Wealth Planner</p> <p>15770 North Dallas Parkway, Suite 850, Dallas, TX 75248 D 214.217.5823 C 214.621.4596 hfranklin@navigationfinancial.com www.navigationfinancial.com • www.happyfranklin.com</p> |  <p>People Newspapers Park Cities People • Preston Hollow People</p> <p>"THE BEST COMMUNITY NEWSPAPER IN TEXAS" Serving Park Cities since 1981</p> <ul style="list-style-type: none"> • Award-winning community news • Best demographics • 100% coverage of the Park Cities <p>214.739.2244 parkcities@people.com An affiliate of </p> |  <p>RLG CONSULTING ENGINEERS Where visions meet solutions</p> <p>David M. Goodson, P.E. Stuart & Markussen, P.E. R.P.L.S.</p> <p>12001 N. Central Expressway, Suite 300, Dallas, TX 75243 (214) 739-8500 • Fax (214) 739-6355 www.rlginc.com</p> |
|  <p>OLIAI LAW FIRM, PLLC</p> <p>SARAH E. OLIAI Attorney at Law Board Certified in Estate Planning and Probate Law.</p> <p>4521 San Jacinto Dallas, Texas 75204 soliai@oliailawfirm.com</p> <p>214.784.5077 www.estateplandallas.com</p> |  <p>SUSAN GLEN SVP Client Relations & Non-Profit Solutions</p> <p>susang@careemp.com 214.908.9981 www.CareerMP.com</p>  <p><i>Proudly a minority & woman owned firm</i></p> | <p>Purpose Driven Content That Grows Business Value</p>   <p>SERVE to LEAD MEDIA markneace.com</p> |
|  <p>CC YOUNG CELEBRATING 100 YEARS! SERVING SENIORS SINCE 1922</p> |  <p>State Farm Sells Life Insurance.</p> <p></p> <p>Kathy L. Wall, Agent 214-350-2692 Kathy@KathyLWall.com</p> |  <p>Vista Bank MEMBER FDIC EQUAL HOUSING LENDER</p> <p>Putting people first since 1912. vistabank.com</p> |
|  <p>McGriff Insurance Risk Management Employee Benefits</p>  <p>Kyle Marmillion Vice President, Advisor, Partner (512) 470-3297</p> |  <p>Branded Packaging Made Easy Since 1976.</p> <p>Food Service Retail E-Commerce Promotional</p> <p>Eric K. Heitkamp 1.800.575.4902 www.packagingplususa.com</p> | <p>Allie Beth Allman™ & Associates A BERKSHIRE HATHAWAY AFFILIATE</p>  <p>Jason Graves REALTOR 214.404.7787</p> |
|  <p>WaFd Bank TEXAS</p> <p>James Weichel Texas Regional President Senior Vice President</p> <p>5420 LBJ Freeway, Suite 200 Dallas, TX 75240 o 972-419-4170 m 214-498-7000 james.weichel@wafd.com</p> |  |  |
|  | <p><i>Thank you to all our Marketplace Advertisers</i></p> <p>We have spots available for the 2025-26 Rotary Year.</p> <p>Purchase at the RCPC website "store" or with a check. Cost of the ad will be prorated during the year.</p> <p>To change or update your ad, send an updated digital Business Card to dawson@swbell.net and to kyle.marmillion@protonmail.com.</p> <p>Questions? Ask Mark Neace at mark@synclabmedia.com</p> | |