



THE HUB

The Rotary Club
of Park Cities

Volume 75, Number 15

www.parkcitiesrotary.org

November 7, 2025

Serving to Make a Difference Since 1948

TODAY'S PROGRAM

Program Chair of the Day: Herb Hammond



Darin Klemchuk

Carry the Load

Darin Klemchuk serves on the management committee for Carry the Load.

Carry The Load is a non-profit organization that exists to preserve the sanctity of Memorial Day through community gatherings and storytelling to unite Americans in appreciation for the sacrifices made by a few who carried the load for all. What started in 2011 as a grassroots effort by two veteran U.S. Navy SEALs has now grown into a nationwide movement with people honoring and remembering our nation's heroes throughout the year.

Shortly after the Gulf War, Darin served as an infantry soldier in the 161st Infantry Regiment in the Seattle area between 1991-1994 attaining the rank of Sergeant (E5). Darin began participating in Carry The Load in 2012 and currently leads the Overwatch Committee, which oversees security for the annual May March event with attendance reaching 10,000 people.

Darin, is also the founder of Klemchuk PLLC (www.klemchuk.com), a Dallas-based intellectual property law firm, and is also co-founder of Engage Workspace for Lawyers (lawofficespace.com), which is an executive suite built exclusively for lawyers by lawyers.

About Carry The Load (from their website)

Carry The Load is a non-profit organization that exists to preserve the sanctity of Memorial Day through community gatherings and storytelling to unite Americans in appreciation for the sacrifices made by a few who carried the load for all. What started in 2011 as a grassroots effort by Veteran U.S. Navy SEALs, Clint Bruce and Stephen Holley has now grown into a nationwide movement with people honoring and remembering our nation's heroes throughout the year. Please donate to support our mission.

Our Mission: To provide active ways to honor and remember our nation's heroes by connecting Americans to the sacrifices made by our military, veterans, first responders, and their families.

Our Vision: Our vision is for all Americans to unite in honoring the sacrifices made by our nation's heroes.

Our Goals

- To increase awareness and educate Americans of the daily sacrifices made by those who protect our freedom and liberties.
- To provide opportunities for Americans to actively honor those in the military and first responder community.
- To raise funds that provide healing to the mind, body, and soul of our nation's service members and their families.

UPCOMING EVENTS!

Friday, Nov. 1 – Soles for Souls. Start collecting gently used pairs of shoes to bring to Meetings. Qs? Ask Eric Harrison

Sunday, Nov. 9, 3:00 to 5:00 pm. RCPC VIP Guided Tour of the **National Medal of Honor Museum** Adult (18+) \$51/ticket Senior (65+) \$46.75/ticket Qs? Ask Happy Franklin

Saturday, Nov. 22, 9 to 11:00 am
Popcorn Packing at Scottish Rite Hospital. More details soon!

Sunday, Nov. 30, 3:00-7:00pm, Snider Plaza Tree Lighting! More details soon!

North Texas Food Bank Volunteer Packing Day, October 25, 2025



Saturday morning, Oct. 25, thirty volunteers from RCPC packed 39,622 pounds of food, which equaled 32,935 meals. The demand is as great as during COVID.

Be a Vibrant and Visionary Model of Service Above and Beyond Self



UPCOMING PROGRAMS



Nov. 14 Larry Webb, District Foundation Chair
The Rotary Foundation



Nov. 21 Larry Walsley
Tough Streets, Rough Skies, and Sunday Sidelines



Nov. 28 **NO Meeting**
Happy Thanksgiving Holiday!

Dec. 5 Chili Day
Salvation Army

CLUB ANNOUNCEMENTS

Please note that RCPC meetings and other events are public events where photos and video are customarily taken. By attending you are consenting to free use of your likeness on RCPC and related websites, social media, streaming video, emails, newsletters and similar methods.

Have a Great Idea for a Speaker? Your ideas are needed! Send your ideas with the details to Richard Stanford.

Help Wanted! At ANY RCPC Event or Project. Take a few pictures, include a few sentences (who, what, when, where and WHY) and send to Betty for The Hub

RI Foundation: \$100 (or more) Every Rotarian Every Year! See Greg Pape.

RCPC Foundation: \$100 (or more). See Birthdays below, then Jack Carpenter.

Attendance Rule Change. For those wanting to maintain Perfect Attendance, make-ups may now be completed within a year. RI is no longer tracking attendance.

Like Us! <https://www.facebook.com/pages/Rotary-Club-of-Park-Cities/115439238516325>

THOUGHTS ON...

Heroes

The real hero is always a hero by mistake; he dreams of being an honest coward like everybody else.

~ **Umberto Eco**

Everyone's a hero in their own way, in their own not that heroic way.

~ **Joss Whedon, Zack Whedon, Maurissa Tancharoen, Jed Whedon**

Heroing is one of the shortest-lived professions there is. ~ **Will Rogers**

There are new words now that excuse everybody. Give me the good old days of heroes and villains. the people you can bravo or hiss. There was a truth to them that all the slick credulity of today cannot touch.

~ **Bette Davis**

Nurture your mind with great thoughts; to believe in the heroic makes heroes. ~ **Benjamin Disraeli**

I think of a hero as someone who understands the degree of responsibility that comes with his freedom.

~ **Bob Dylan**

I think a hero is an ordinary individual who finds strength to persevere and endure in spite of overwhelming obstacles. ~ **Christopher Reeve**

'Meeting Notes' continued

potential new membets to a meeting; invite them to a service project. We want them to be service oriented like we are. Our representative on the RI Foundation Board is RIPP Jennifer Jones from Ontario, Canada.

District 5810 has sixty clubs in it. Visiting all the clubs, she said she has learned about hundreds of new projects and new initiatives, especially those with youth, Interact and Rotaract. One of the accomplishments of the District last year was that \$1,169 was raised for the RI Foundation. A challenge was that only \$51,000 was donated to eradicate polio. She has set her goal this year for \$200,000. The Gates Foundation will match funds, but we have to raise them first. There are eight counties in District 5810. The District is also part of Zone 25B. Seven Districts in Texas make up Zone 25B. District 5840 is Kerrville, and they have raised about \$500,000 for the flooding victims. Zone 5870 around Georgetown also has flood victims, but did not get the publicity, so has only raised \$70,000. We need to help these Districts if we can.

Proposed New Member

9'a Yf' JUXYgd]bc

Type of Membership: Individual
Classification: Energy/Utilities
Proposed by Gjc V1 Ub 5 Vfu Ua

The Hub is printed by
Minuteman Press

7010 Greenville 75231 • 214.691.6377

ROTARY CONNECTED



<http://bit.ly/RCPCfacebook>



<http://bit.ly/RCPC/linkedin>



<http://bit.ly/RCPC/twitter>



<http://bit.ly/RCPC/tube>



<http://bit.ly/RCPC/googleplus>

Miss a Meeting? Watch it on YouTube or as an event on **Facebook!**



<http://bit.ly/RCPC/youtube>

<https://www.facebook.com/events/>

Share Rotary! Post on your social media when you're at a meeting or event. Use our hashtags!

Like and Follow us on Social Media: Website:

<https://parkcitiesrotary.org/>

Facebook: www.facebook.com/RotaryClubOfParkCities

YouTube: www.youtube.com/channel/UCf4ZH-2nwIscW8XNTnsbonw

LinkedIn: www.linkedin.com/company/park-cities-rotary-club/?viewAsMember=true

Make a post about or while at Rotary and use these hashtags



#PeopleOfAction



#parkcitiesrotary

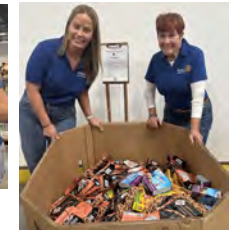


#district5810proud

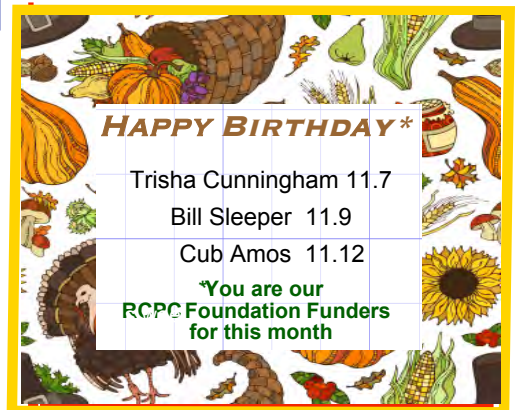


#goodthingshapp e nonfridays

'Food Bank Pictures' continued



More pictures in the photo album on the RCPC website.



Rotary Club of Park Cities Market Place

 <p>GRAY REED & MCGRAW, P.C.</p> <p>Board Certified in Civil Trial Law By the Texas Board of Legal Specialization</p> <p>Cleve Clinton Shareholder</p> <p>1601 Elm Street Suite 4600 Dallas, Texas 75201</p> <p>P: 214.954.4135 D: 469.320.6032 F: 214.953.1332 cclinton@grayreed.com</p> <p>www.grayreed.com</p>	 <p>RICHARDSON TIMBERS, LLC <i>Timber Harvesters Since 1960</i></p> <p>Lynn O. Surls</p>	<p>DBG Advisors™ Determine, Build – Get Full Value</p> <p>Dr. Nolan Duck, CEO M&A Advisor – Board Certified Broker – Real Estate Broker Certified Exit Planning Advisor – Certified Value Builder</p> <p>801 E. Campbell Rd. • Ste 250-L • Richardson, TX 75081 Office 972-200-0991 • Cell 972-358-0321 nolan@dbgadvisors.com • www.dbgadvisors.com</p>
 <p>NAVIGATION FINANCIAL GROUP</p> <p>Happy Franklin, AWMA, CRPS, AAMS, CDFA Wealth Planner</p> <p>15770 North Dallas Parkway, Suite 650, Dallas, TX 75244 D: 214.217.5825 • C: 214.621.4596 hfranklin@navigationfinancial.com www.navigationfinancial.com • www.happyfranklin.com</p>	 <p>People Newspapers Park Cities People • Preston Hollow People</p> <p>"THE BEST COMMUNITY NEWSPAPER IN TEXAS" Serving Park Cities since 1961</p> <ul style="list-style-type: none"> • Award-winning community news • Best demographics • 100% coverage of the Park Cities <p>214.739.2244 parkcitiespeople.com An affiliate of D</p>	 <p>RLG CONSULTING ENGINEERS Where visions meet solutions</p> <p>David M. Goodson, P.E. Stuart & Markussen, P.E. & P.L.L.C.</p> <p>12001 N. Central Expressway, Suite 300, Dallas, TX 75243 (214) 739-8500 • Fax (214) 739-6354 www.rlginc.com</p>
 <p>OLIAI LAW FIRM, PLLC</p> <p>SARAH E. OLIAI Attorney at Law Board Certified in Estate Planning and Probate Law</p> <p>4521 San Jacinto Dallas, Texas 75204 soliai@olialawfirm.com</p> <p>214.784.5077 www.estateplandallas.com</p>	 <p>CMP RECRUITMENT DEVELOPMENT OUTPLACEMENT</p> <p>SUSAN GLEN SVP Client Relations & Non-Profit Solutions</p> <p>susang@careermpp.com 214.908.9981 www.CareerMP.com</p>  <p>Proudly a minority & woman owned firm</p>	 <p>Synclab Media VIDEO MARKETING & CONSULTING synclabmedia.com</p> <p>Mark Neace (469) 358-1444 mark@synclabmedia.com</p> <p>@synclabmediastudio YouTube LinkedIn @neace Paul Harris Fellow 2016</p> 
 <p>CC YOUNG CELEBRATING 100 YEARS! SERVING SENIORS SINCE 1922</p>	 <p>State Farm Sells Life Insurance.</p> <p>Kathy L. Wall, Agent 214-350-2692 Kathy@KathyLWall.com</p>	 <p>Vista Bank MEMBER FDIC • EQUAL HOUSING LENDER</p> <p>Putting people first since 1912. vistabank.com</p>
  <p>Kyle Marmillion Vice President, Advisor, Partner (512) 470-3297</p>	<p>BARBARA BARNEY - REALTOR REALTOR®, MBA FROM SMU COX SCHOOL OF BUSINESS - REAL ESTATE AND FINANCE</p> <p>Allie Beth Allman & Associates A BERKSHIRE HATHAWAY AFFILIATE</p> <p>469.371.7777 cell 469.371.7777 direct barbara.barney@alliebeth.com DEGREE in INTERIOR DESIGN</p>	<p>Allie Beth Allman & Associates A BERKSHIRE HATHAWAY AFFILIATE</p> <p>Jason Graves REALTOR 214.404.7787</p> 
 <p>BRANDED PACKAGING MADE EASY.</p> <p>WWW.PACKAGINGPLUSUSA.COM</p>	 <p>James Weichel Texas Regional President Senior Vice President</p> <p>5420 LBJ Freeway, Suite 200 Dallas, TX 75240 o 972-419-4170 • m 214-498-7000 james.weichel@wafd.com</p>	
	<p><i>Thank you to all our Marketplace Advertisers</i></p> <p>We have spots available for the 2025-26 Rotary Year.</p> <p>Purchase at the RCPC website "store" or with a check. Cost of the ad will be prorated during the year.</p> <p>To change or update your ad, send an updated digital Business Card to bedawson@swbell.net and to kyle.marmillion@protonmail.com.</p> <p>Questions? Ask Mark Neace at mark@synclabmedia.com</p>	