



THE HUB

The Rotary Club
of Park Cities

Volume 71, Number 15

www.parkcitiesrotary.org

October 18, 2019

Serving to Make a Difference Since 1948

TODAY'S PROGRAM

Program Chair of the Day: Tom Swift



Norma Nelson, Executive Director

Readers 2 Leaders: Helping Children Learn to Read at Grade Level

Norma Nelson currently serves as the President & CEO of Readers 2 Leaders (R2L), a literacy non-profit serving West Dallas that was formed in 2010. Norma was the first person hired by R2L, and has been instrumental in developing all R2L programs. Over the past nine years, the organization has grown from a small after-school provider to an agency serving over 1000 children, parents and nonprofit professionals.

Prior to working with Readers 2 Leaders, Norma spent eight years as an educator. She has experience teaching 1st-8th grade, and served as Assistant Principal and Curriculum Director for St. Mary of Carmel Catholic School in West Dallas.

Norma holds a B.A. in Political Science and Theatre, as well as a Master's Degree in Education from the University of Notre Dame. She is the recipient of two awards through the University of Notre Dame's Alliance for Catholic Education Program: the Michael Pressley Award for Excellence in Catholic Education as well as the Scott. C. Malpass Founders Prize, a recognition of her work in the nonprofit sector.

Norma is active in the Dallas non-profit community and currently serves as a board member for St. Mary of Carmel Catholic School in West Dallas.

readers2leaders.org

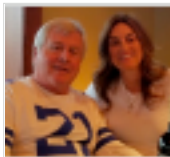
RCPC IN ACTION

Cowboys Watch Party *from Happy Franklin*

Fun, food, fellowship and an overall good time overcame a disappointing Cowboys loss to Green Bay. The RCPC Cowboys watch party was October 6 at Jasper's on Greenville !



**Packers- 34,
Cowboys- 24**



Volunteers Needed for Angel Tree *from Ian Mudge*

It's time to volunteer for Angel Tree at North Park. This year we have 76 time slots to fill over five days.

Click on Sign Up on the RCPC website to view available slots and to book yourself directly online.

Shifts most days are 9:45 to Noon, 11:45am to 3:00pm, 2:45 to 6:00pm, and 5:45 to 9:00pm.

Friday, Nov. 1 - 3 slots for each shift

Friday, Nov. 22 - 3 slots for each shift

Friday, Nov. 29 (Day after Thanksgiving) - 6 slots for each shift

Sunday, Dec. 1 - 6 slots for each shift
No 9:45 to Noon shift

Friday, Dec. 6 (Last Day) - 6 slots for first two shifts; 10 slots for 2:45 to 6:00pm shift. No 5:45 to 9:00pm shift.

Sign up today and help make this another great year for Angel Tree!



Special Interests? Join a Rotarian Action Group! *from Rotary Service and Engagement Email*

Rotary has many Rotary Action Groups (RAGs) open to interested Rotarians from around the world. These are just a few:

- **RAG for Microfinance and Community Development** works to alleviate poverty through sustainable micro-finance and development.
- **Environmental Sustainability RAG** helps clubs and districts plan and evaluate projects related to environmental sustainability and climate change.
- **Food Plant Solutions RAG** alleviates hunger by teaching people, particularly in developing countries, how to grow local foods that best fill their nutritional needs.

Be a Vibrant and Visionary Model of Service Above and Beyond Self

LAST WEEK

Presiding: **Richard Stanford**
 Invocation: **Kita Hobbs**
 Pledge: **Karl Von Bieberstein**
 Photographer: **Ley Waggoner**
 Chair of the Day: **Tom Swift**
 Speaker: Congressman **Colin Allred**
 Program: **32nd District Legislative Update**



President **Richard Stanford** called the meeting to order. **Kita Hobbs** gave the invocation, noting that **Ginny Barbato** is recovering from foot surgery. PP **Karl**

Von Bieberstein led the Pledge of Allegiance and "The Star Spangled Banner," then "The Eyes of Texas" and "Boomer Sooner," for Texas-OU Weekend. Our visitors and guests were introduced, including District Paul Harris Society Chair Glen Campbell and a visiting Rotarian from Richardson. **Happy Franklin** introduced our Marketplace Advertiser of the week, **Charles Polansky** and Hub International.

PP **Greg Pape** brought us up to date on the Rotary International Foundation. Then with District PHS Chair Glen Campbell recognized PP **Rod Pirtle** as the newest member of the Paul Harris Society. Members donate \$1,000



each year. PP **Greg** reported that RCPC has a dozen Major Donors and fifteen PHS members. He also reported that thirty-one members have contributed to the RI Foundation since July for a total of about \$11,000. He then recognized



PP **Ley Waggoner** and PP **Paul Pirok** for their latest Paul Harris Fellow contributions.

Please remember ...

Ginny Barbato who is recovering from foot surgery

Please let us know your Joys or Concerns at- announcements@parkcitiesrotary.org

President **Richard** reminded us that the club's strategic priorities are health, hunger and leadership. **Stan Wright** reported on the RCPC Packing Day at the North Texas Food Bank. The Food Bank had held a drive for donations of peanut butter in Collin County and had received a ton of jars of peanut butter. Forty-five members and their family members checked all of the jars to be sure they were good. The equivalent of 177 boxes equaling 6,849 pounds of food was packed; this equals 5,728 meals. **Stan** also reported that on the past Tuesday 135 families received food from the Food Pantry Truck.

President **Richard** announced that Dentistry with a Heart would be Saturday, October 26 from 8:00 to 4:30 at Agape Clinic. He also said that there had been a nominating committee meeting and the second meeting of the new class in Legacy of Leadership.

Tom Swift introduced our speaker today, Congressman Colin Allred. He began by thanking RCPC for all they are doing at Hillcrest



H.S. He said he had been raised by a single mother who was a teacher, and that he grew up at the Y when he was not in school. Those institutions provided important stability and values to young people. He said government cannot provide outcomes, but it can provide opportunities. Dallas County has about twenty percent uninsured, which is higher than the state average. He also is concerned about the high cost of prescription drugs, and believes that the Department of Health and Human Services may negotiate the cost of drugs. He said he tries to focus on things we can get done and tries to find agreement on both sides of the aisle. He has cosponsored bills that are bipartisan. He said he believes there are more points of agreement between the parties than differences. (Continued on page 3)

Our Mission

Building a legacy of good works and fellowship, we strive to:
 REACH those in need in partnership with others
 INSPIRE tomorrow's leaders with high ethical standards
 FOSTER lives of service above self
 – A supporting member of Rotary International

The Hub is the weekly newsletter of the Rotary Club of Park Cities (Dallas)
 Betty Dawson, *Editor*

Shutterbug Committee

Phillip Bankhead, *Chair*

Bulletin/Internet Advertising

Mark Kashar, *Chair*



OFFICERS and DIRECTORS 2019-2020

Richard Stanford, *President*
Barb Jeffries, *President Elect*
Happy Franklin, *Vice President*
Valerie Pelan, *Secretary*
Scott McLaughlin, *Treasurer*
Bud Naifeh, *Institutional Outreach*
Herb Ziev, *Youth Services*
Paul McFarland, *Community Outreach*
E G McMillan, *Club Operations*
Stan Wright, *Humanitarian Committees*
Daniel Drabinski, *Membership/Fellowship*
Marketing/Communications
Karen Farris, *At Large*
Paul Pirok, *Immed. Past President*
Cindy Cummings, *Sgt-at-Arms*
Lisa Amsberry, *Parliamentarian*
Laurie Aldredge, *Club Administrator*

6704 Snider Plaza, Dallas, TX 75205

Office Phone: 214-739-4170

Office Fax: 214/363-6980

Email: club@parkcitiesrotary.org

www.parkcitiesrotary.org



Mark Daniel Maloney
 RC of Decatur, AL

President, Rotary International

www.rotary.org

Beverly Grogan,
 Grand Prairie Metro
 Governor, District 5810
www.rotary5810.org



EVENTS CALENDAR

October						
S	M	T	W	Th	F	S
		M	M	M In	Mtg	
F 6	M	M	FT	Pr FH	Mtg	D FB
13	M	M	BD	Cn	Mtg	D
20	Mc	M	M	M In	Mtg	DH
27	M	M	M	M In		

Get Involved!

A=Agape Health Service Days
 BD = Board of Dirs. Mtg, 7am
 LaMadeleine, 75 & Mockingbird
 Cn = PCR Connect Event.
 CP = ChildsPlay Work Mtg
 CC = Core Clubs Event
 D = District 5810 Event
 DH = Dentistry with a Heart
 FR = Family of Rotary Event
 F = Fellowship Event
 FF = RCPC Foundation Fund Mtg. See Ed Fjordbak
 FH = Fisher House. See Rob E
 In-Interact Special Project

In- Interact at Hillcrest H.S., 8 am. See Tracy Gomes
 LL- Legacy of Leadership
 M = Meals on Wheels (Different teams on each day) See Jim Weichel
 Mn-Mentoring at Hillcrest HS
 Mc = Ronald McDonald House-See Jina McDaniel
 NM = New Member Event
 FT=NTFB Truck-Stan Wright
 FB=NTFB Event
 Pr = Program Committee Mtg
 RU = Rotary University
 SpE = Special Service Event

UPCOMING PROGRAMS



Oct. 25 New Members Introductions



**Nov. 1 Mike Hoque
The Dallas Smart District**



**Nov. 8 Clint Bruce, Former Navy Seal, Pro Football
Naval War Stories**



**Nov. 15 Stephanie Brigger, VP of Development
Overview of the Work of Scottish Rite Hospital**

ROTARY CONNECTED



<http://bit.ly/RCPCfacebook>



<http://bit.ly/RCPCtwitter>
#parkcitiesrotary



<http://bit.ly/RCPCyoutube>



<http://bit.ly/RCPCgoogleplus>



RCPC has its own channel.

Miss a Meeting? Watch it on Facebook!

**Connect with Rotary International
and District 5810!**



RI: www.linkedin.com/groups?gid=858557&trk=hb_side_g



RI: <http://twitter.com/#!/rotary>



RI: www.facebook.com/rotary

Dist. 5810: www.facebook.com/Rotary-District5810



RI has its own channel on YouTube offering a growing collection of videos and psas.



Check out or add to RI's Flickr group often, www.flickr.com/groups/familyofrotary/



<http://pinterest.com/rotary/>

RI has Pinboards on major projects.



www.statigr.am/rotaryinternational

See RI's latest pictures via Instagram.

CLUB ANNOUNCEMENTS *Sign up at www.parkcitiesrotary.org*

Dentistry with a Heart, Sat, Oct. 26, 8:00am - 4:30pm, at Agape Clinic, 4104 Junius, Dallas 75246. Assist patients who have come for free dental care.

Christmas Party, Thurs, Dec. 12. Mark your Calendars Now!

RI Foundation: \$120 (or more) Every Rotarian Every Year! See Greg Pape.

RCPC Foundation: \$100 (or more). See Birthdays below, then Cindy Cummings.

Attendance Rule Change For those wanting to maintain **Perfect Attendance. make-ups may now be completed within a year.**

The Rule of 85. Attendance requirements change for those who are at least 65 years of age and who have been a member of a Rotary club for twenty years.



Like Us! <https://www.facebook.com/pages/Rotary-Club-of-Park-Cities/115439238516325>

The **Directory** is on line: Log in > Click on left side under My ClubRunner > View Club Directory or View Club Photo Directory. Other archives are at Club Documents

THOUGHTS ON ... MEETING NOTES (continued)

Reading

The man who doesn't read good books has no advantage over the man who can't read them.

~ **Mark Twain**

Reading is to the mind what exercise is to the body.

~ **Sir Richard Steele**

People say that life is the thing, but I prefer reading. ~ **Logan P. Smith**
A truly great book should be read in youth, again in maturity and once more in old age, as a fine building should be seen by morning light, at noon and by moonlight.

~ **Robertson Davies**

What is written without effort is in general read without pleasure.

~ **Samuel Johnson**

What we become depends on what we read after all of the professors have finished with us. The greatest university of all is a collection of books.

~ **Thomas Carlyle**

There are two motives for reading a book: one, that you enjoy it; the other, that you can boast about it.

~ **Bertrand Russell**

Outside of a dog, a book is man's best friend. Inside of a dog it's too dark to read.

~ **Groucho Marx**

(Cont. from pg. 2) He said that we have the second largest VA Hospital in Dallas. A former Baylor Scott & White hospital in Garland is being converted to a VA hospital. It is the first time an empty hospital has been donated. Any new VA hospital will cost at least \$800 million to build, but only a fraction of that to retrofit. He said he disagrees with the decision to allow the Turks to go into northern Syria. One hundred and fifty special forces were working with the Kurds to keep them safer. He believes Congress will assert their Constitutional role in foreign policy. When the U.S. shows up around the world, it is because of what we believe is good foreign policy. He believes the southern border is a people problem but also a drug problem and a gang problem.

HE WHO LAUGHS, LASTS

Doctors at a hospital in Brooklyn, New York have gone on strike! Hospital officials say they will find out what the doctors' demands are as soon as they can get a pharmacist over there to read the picket signs!

*We gratefully acknowledge
ASTRO-GRAPHICS
for the partial funding of The Hub*

He is on the Transportation and Infrastructure Committee. Over a million people have moved here, and they are using the same, existing resources. We must diversify to get around more efficiently. He supports the high-speed train to Houston; currently, ninety percent of the trips to Houston are by car. You can't add all of the cars to the roadway without problems. He said education is his passion. He believes in investing in young people. There are jobs that can't be filled in the trades. Work force jobs, plumbers, carpenters, electricians, technicians, etc. are good jobs. There are more trade and technical schools needed. The federal government should help with that, aligned with the state and district levels.

Happy Birthday*

Ruth Alhilali 10.18
Roger Allspaugh 10.18
Fred Brown 10.20
Herb Durham 10.20
Scurry Johnson 10.20

*You are our RCPC Foundation Funders for this we

