



# THE HUB

The Rotary Club  
of Park Cities

Volume 68, Number 34

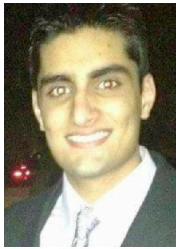
[www.parkcitiesrotary.org](http://www.parkcitiesrotary.org)

April 7, 2017

*Serving to Make a Difference Since 1948*

## TODAY'S PROGRAM

*Program Chair of the Day: Tracy Gomes*



## Sahil Gilani, Catholic Charities of Dallas Refugee Resettlement

Mr. Gilani is the Refugee Resettlement Case Manager for Catholic Charities of Dallas. As a part of his job, he provides case management, effective services, efficient resources, and compassionate support to ensure clients can work towards building self-sufficient lives. His duties include, but are not limited to: airport pick-ups, SNAP and Medicaid application, filing, case noting, budgeting, financial tracking, cash assistance and vendor payments, interpretation, home visits, USCIS and SSA appointments, client and vendor interactions, and presentations and panel discussions representing Catholic Charities of Dallas.

Prior to coming to Catholic Charities of Dallas, he was a Refugee Resettlement Casework Intern with International Rescue

Committee where he provided many similar services to what he does today.

He received a B.A. with Honors in Religious Studies and Political Science from Emory University. While at Emory, he was a member of the Honor Societies for Political Science and for Religious Studies. He was also the Social Chair and the Marketing Chair for the Emory Muslim Students Association.

He is currently attending the University of Texas at Austin where he is working on a Master of Science in Social Work with a concentration in Communities and Administrative Practice. He also has taken a leadership role in various community activities.

<https://ccdallas.org/>

## COMMITTEE TIME



### Out of Town on the Fourth of July??

*-from Karen Farris*

We realize that some of our members will be out of town on the 4th or are not physically able to work the parade. Good news - there is still a role for you.

Barb Jeffries and I head up a committee that manages the clubs participant database, designs and sends out invitations, follows up with commercial and community groups and handles some of the administrative detail behind the scenes.

We will have ONE meeting; the rest of the work can be done on a flexible schedule from the comfort of your home. Please let me know if you want to join this illustrious group that we are calling the "Out of Town but Engaged" group by sending an email to [kfarris@rhsb.com](mailto:kfarris@rhsb.com).

## ROTARY INTERNATIONAL

### Water-deprived Communities in Ghana

*excerpted from an article in Rotary Voices*

On November 12, Nana Konduah Dickye of the Rotary Club of Sekondi-Takoradi in Ghana, led a three-member team to visit seven communities the Rotary club is responsible for as part of the multi-year Rotary-USAID International H2O Collaboration in Ghana.

The aim of the collaboration is to provide water, sanitation, and hygiene infrastructure and advocacy to deprived communities. The total journey to the seven communities covered a distance of 800 kilometers. It is one thing to hear about communities without basic water supply and sanitation needs. Actually going to these communities and experiencing the kind of hardships they go through is another.

In each community that they went to, they first met with community elders to inform them of the mission, as is customary in Ghana.



On the average, each community has a population of about 1,500, and 80 percent of the working population are engaged in subsistence farming. The remaining 20 percent are made up of table top food staff sellers and various handicraft artisans. Only one, a mining town, had access to a municipal water supply and a complement of other boreholes. The rest of the communities get their water supply from streams and "Sachet Water" which basically is 500 ml normal pipe-borne water packed in plastic sachets for drinking.

One community's only access for household water is a contaminated stream, and people rely on sachet water transported from the bigger towns for drinking. At one of the eight households we spoke with, we learned they

*B(continued on pg 3)*

*Be a Vibrant and Visionary Model of Service Above and Beyond Self*

### LAST WEEK

Presiding: **Tracy Gomes**  
 Invocation: **Stan Carr**  
 Pledge: **Terri Thomas**  
 Introductions: **Andy Carothers**  
 Photographer: **Barb Jeffries**  
 Chair of the Day: **Daniel Drabinski**  
 Speaker: **Scott Beck**  
 Program: **Midtown Development**



President **Tracy Gomes** called the meeting to order. **Stan Carr** gave the invocation. **Terri Thomas** led the Pledge of Allegiance and The Star Spangled Banner. **Andy Carothers** introduced our visitors and guests. **Shawn Foster** announced our Marketplace Advertiser of the week. PP **Greg Pape** announced two Paul Harris Awards, one to **Susan Harris**, her

second of the year, which puts her at the seventh level, the ruby level. He also announced that **Roy Washburn** had added another level to his multi-level Paul Harris designation. PP **Greg**



then asked **Charlie Bond** to come to the podium. Charlie explained that his father-in-law, Jere Elliott, had been a member of RCPC and had introduced him to Rotary. When he passed away, the family decided to donate an annual Jere Elliott Memorial Award of a Paul Harris Fellow. The RCPC Board selects the recipient this year the award went to **Daniel Jacobs**. **Tom Swift** introduced our newest member, **Parthivi Patil**, a graduate student



and Teaching Assistant in Engineering at SMU. Her

### Please remember ...

**Bob Patton** whose younger brother has passed away suddenly.

Please let us know your Joys or Concerns at- [announcements@parkcitiesrotary.org](mailto:announcements@parkcitiesrotary.org)

parents are involved in Rotary in India. \ **Sarah Oliai** introduced our Community Connection for this month, Keith Laycock of the H.P. Education Foundation. This foundation was created due to the state's taking funds out of HPISD to redistribute to less affluent school districts; ninety percent of the school taxes go back to Austin. The H.P. Education Foundation looks at innovative ways of funding the HPISD schools. The HPISD has recently received a grant in Science, Technology, Arts, Engineering, Math (STEAM) subjects. The grant will be used to develop curriculum in these subjects and to make it so it can be exported to other districts. **Paul Pirok** announced the RCPC Race Day at Lone Star Park on April 23rd.

**Daniel Drabinski** introduced our speaker today, Scott Beck, who spoke on Midtown Development. He said he is in the master develop-

ment business, and is a part of the planning for the Valley View Mall area. Valley View mall was built in 1974, and when it was put up for bankruptcy, many of the other bidders wanted to turn it into a discount mall. However, the center of population density is at I-635 and Preston Rd, but Dallas is losing population to the north. Both the Galleria area and Valley View have been rezoned. The area to be redeveloped is bounded by the access road to I-635 and Alpha Road, and Preston Road and the Galleria. It is 56.5 acres of contiguous land area. The plan is for the area to be like Uptown or West Village. He believes it will become a satellite of downtown. The plan includes a central park which will be five time the size of Klyde Warren Park. The area is divided into seven different subdistricts, and the plan delineates what can be built in each. Four percent of the site will be open space in each area.



### Our Mission

Building a legacy of good works and fellowship, we strive to:  
 REACH those in need in partnership with others  
 INSPIRE tomorrow's leaders with high ethical standards  
 FOSTER lives of service above self  
 - A supporting member of Rotary International

The Hub is the weekly newsletter of the Rotary Club of Park Cities (Dallas)  
 Betty Dawson, Editor

### Shutterbug Comm'ttee

Fred Speno, Chair

### Bulletin/Internet Advertising

Shawn Foster, Chair



### OFFICERS and DIRECTORS 2016-2017

**Tracy Gomes, President**  
**Pam Carvey, President Elect**  
**John Gilchrist, Vice President**  
**Barb Jeffries, Secretary**  
**Jeff McNaughton, Treasurer**  
**John Whaley, Institutions**  
**Tom Rhodes, Club Operations**  
**George Burrell, Community**  
**Kathy Schatz, Humanitarian**  
**Tom Swift, Membership**  
**Tom Swift, Marketing**  
**Lisa Amsberry, Youth**  
**Fred Brown, At Large**  
**Karen Farris, Immediate Past President**  
**Kathleen Klaviter, Sgt-at-Arms**  
**Fred Speno, Parliamentarian**  
**Daniel Jacob, Webmaster**

**Laurie Aldredge, Club Administrator**

6704 Snider Plaza

Dallas, Texas 75205

Office Phone: 214-739-4170

Office Fax: 214/363-6980

Email: [club@parkcitiesrotary.org](mailto:club@parkcitiesrotary.org)

[www.parkcitiesrotary.org](http://www.parkcitiesrotary.org)



**John Germ**

Chattanooga, TN

President,

Rotary International

[www.rotary.org](http://www.rotary.org)

**Bill Dendy, E-Club**

Governor, District 5810

[www.rotary5810.org](http://www.rotary5810.org)

### EVENTS CALENDAR

April						
S	M	T	W	Th	F	S
2	M	M	M	M In	Mtg	CC Wk
9	M	M FT	M	M In	Mtg	
16	M Mc	M	M BD	M In	Mtg	
23	F	M	M	M In	Mtg	
30						

### Get Involved!

A=Agape Health Service Days

BD = Board of Dirs. Mtg, 7am

LaMadeleine, 75 & Mockingbird

Cn = PCR Connect Event.

CP = ChildsPlay Work Mtg

CC = Core Clubs Event

D = District 5810 Event

DH = Dentistry with a Heart

FR = Family of Rotary Event

F = Fellowship Event

FF = RCPC Foundation Fund

Mtg. See Cleve Clinton

FH = Fisher House. See Rob E

In-Interact Special Project

In-Interact at Hillcrest H.S,

8 am. See Bart Noble

M = Meals on Wheels (Differ-

ent teams on each day)

See Patsy Watson

MM-Mentoring at Hillcrest HS

Mc = Ronald McDonald

House-See Jina McDaniel

NM = New Member Event

FT=NTFB Truck-Stan Wright

FB=NTFB Event

Pr = Program Committee Mtg

RU = Rotary University

SpE = Special Service Event

Web = For New Members

## UPCOMING PROGRAMS



**April 14 NO Meeting**  
**Happy Easter!**



**April 21 Kristina Dove**  
**Big Thought**



**April 28 Pat Porter**  
**Big Thought & the SMU Meadows School**



**May 5 New Members**  
**Introductions**

## ROTARY CONNECTED



**Tweet with Tracy!** Follow him at  
rotarytxman@twitter.com



<http://bit.ly/RCPCfacebook>



<http://bit.ly/RCPCtwitter>  
#parkcitiesrotary



<http://bit.ly/RCPCyoutube>



<http://bit.ly/RCPCgoogleplus>



<http://bit.ly/RCPCvimeo>

**RCPC has its own channel. Miss a Meeting? Watch it Online!**

**Connect with Rotary International and District 5810!**

**LinkedIn RI:** [www.linkedin.com/groups?gid=858557&trk=hb\\_side\\_g](http://www.linkedin.com/groups?gid=858557&trk=hb_side_g)



**RI:** <http://twitter.com/#!/rotary>



**RI:** [www.facebook.com/rotary](http://www.facebook.com/rotary)

**Dist. 5810:** [www.facebook.com/RotaryDistrict5810](http://www.facebook.com/RotaryDistrict5810)



**RI** has its own channel on YouTube offering a growing collection of videos and psas.



Check out or add to RI's Flickr group often, [www.flickr.com/groups/familyofrotary/](http://www.flickr.com/groups/familyofrotary/)



<http://pinterest.com/rotary/>



**RI** has Pinboards on major projects.  
[www.statigr.am/rotaryinternational](http://www.statigr.am/rotaryinternational)  
See RI's latest pictures via Instagram.

## CLUB ANNOUNCEMENTS *Sign up at [www.parkcitiesrotary.org](http://www.parkcitiesrotary.org)*

**Let's Transform Dallas**, service project on **Sat, April 8, 8 am-12ish pm**, Westmoreland Heights Comm'ty Ctr, 3739 Homeland St. 75212. See Duston Burns

**RCPC is going to the races! Sunday, April 23.** Gates open at 1:30, first race is at 2:25 pm, Lone Star Park in Grand Prairie. \$14 per person. See P. Pirok.

**Rotary Foundation 100th Birthday Party, Sat, May 13, 6:00-9:00pm**, at Frontiers of Flight Museum. \$100 per person. Pay online.

**RI Foundation: \$100 (or more) Every Rotarian Every Year!** See Greg Pape.  
**Foundation: \$50 (or more).** See the Birthday box below, then Kathleen K

**Like Us!** <https://www.facebook.com/pages/Rotary-Club-of-Park-Cities/115439238516325>

The **Directory** is on line: Log in > Click on left side under My ClubRunner > View Club Directory or View Club Photo Directory. Other archives are at Club Documents

## THOUGHTS ON ... ROTARY INTERNATIONAL (continued)

### Charity

*Charity sees the need not the cause.*  
~ German Proverb

*A bone to the dog is not charity. Charity is the bone shared with the dog, when you are just as hungry as the dog.*  
~ Jack London

*In charity there is no excess.*  
~ Sir Francis Bacon

*Charity begins at home.*  
~ Terence

*Charity begins at home, but shouldn't end there.*  
~ Scottish Proverb

*If charity cost nothing, the world would be full of philanthropists.*  
~ Jewish Proverb

*Charity shall cover the multitude of sins.*  
~ Bible, 1 Peter iv. 8.

*A rich man without charity is a rogue; and perhaps it would be no difficult matter to prove that he is also a fool.*  
~ Henry Fielding

### RCPC FOUNDATION

Members' contributions will be due the week of their birthdays.

"Water" continued from Front Page  
spend an average of the equivalent of about US\$46 on drinking water and cooking. Many of the communities did not have any proper toilet facilities. Throughout our conversations with various households, we learned they were willing to contribute as much as the equivalent

### HE PROFITS MOST WHO LAUGHS BEST

#### Learn your ABC's - Mom Style!

**A - ADULT:** A person who has stopped growing at both ends and is now growing in the middle.

**B - BATHROOM:** A room used by the entire family, believed by all except Mom to be self-cleaning.

**C - COMMITTEE:** A body that keeps minutes and wastes hours.

**D - DATE:** Infrequent outings with Dad where Mom can enjoy worrying about the kids in a different setting.

**E - EMPTY NEST:** See "WISHFUL THINKING."

**F - FABLE:** A story told by a teenager arriving home after curfew.

**G - GUM:** Adhesive for the hair.

of about US\$11 per household as their contribution towards the WASH project the Rotary Club intends to undertake.

Through the collaboration, 103,000 people in 155 communities will benefit over the five-year life of the project by receiving access to clean water and basic sanitation.

**H - HINDSIGHT:** What Mom experiences from changing too many diapers.

**I - INFLATION:** Cutting money in half without damaging the paper.

**J - JUNK:** Dad's stuff.

**K - KISS:** Mom's medicine.

**L - LEMONADE STAND:** Complicated business venture where Mom buys powdered mix, sugar, lemons, and paper cups, and sets up a table, chairs, pitchers and ice for kids who sit there for three to six minutes and net a profit of 15 cents.

*We gratefully acknowledge  
**ASTRO-GRAPHICS**  
for the partial funding of The Hub*

*Happy Birthday\**

Susan Harris 4.9

\*You are our RCPC Funders for this week.

