



Kanaka Creek

# Healthy Waters: For All. Forever.

## UPDATING METRO VANCOUVER'S LIQUID WASTE MANAGEMENT PLAN

**Brent Burton, M.A.Sc., FEC, P.Eng.**

Division Manager, Utility Policy, Planning and Resilience  
Liquid Waste Services

Rotary Club of Yaletown Meeting, November 10, 2022

56337455

**Julie Maclsaac**

Senior Engagement Specialist, External Relations  
Liquid Waste Services

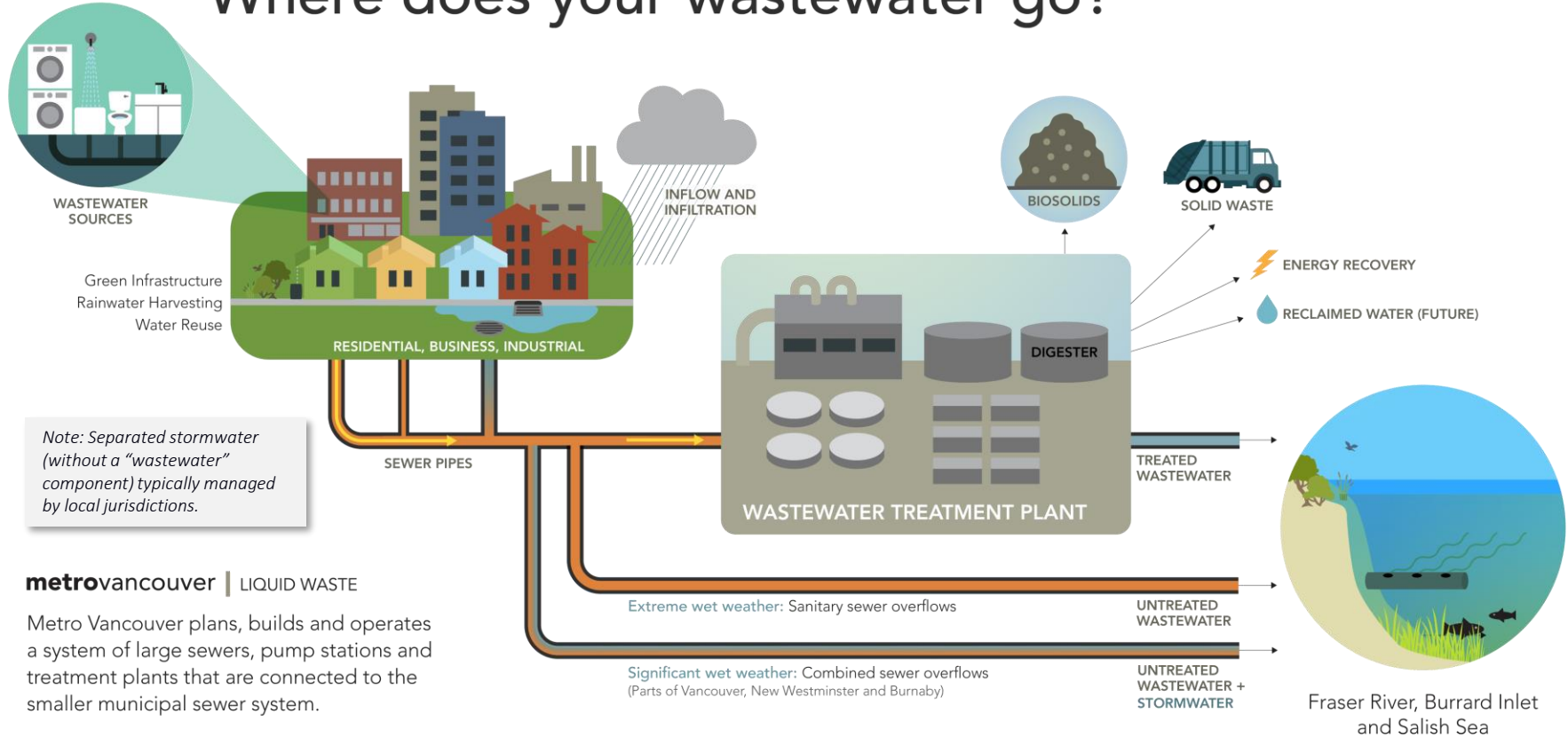
**metrovancover**

An aerial photograph of a city, likely Vancouver, British Columbia. The foreground is dominated by a dense forest of tall evergreen trees. In the middle ground, a large, vibrant green field, possibly a sports field or park, is visible. Beyond the field, a residential neighborhood with numerous houses and trees stretches across the landscape. In the background, a large body of water (likely False Creek) is visible, with mountains in the distance under a sky filled with large, white and grey clouds. A dark blue semi-transparent overlay covers the left side of the image, containing the text.

# Territorial Acknowledgement



# Where does your wastewater go?



## metrovancover | LIQUID WASTE

Metro Vancouver plans, builds and operates a system of large sewers, pump stations and treatment plants that are connected to the smaller municipal sewer system.

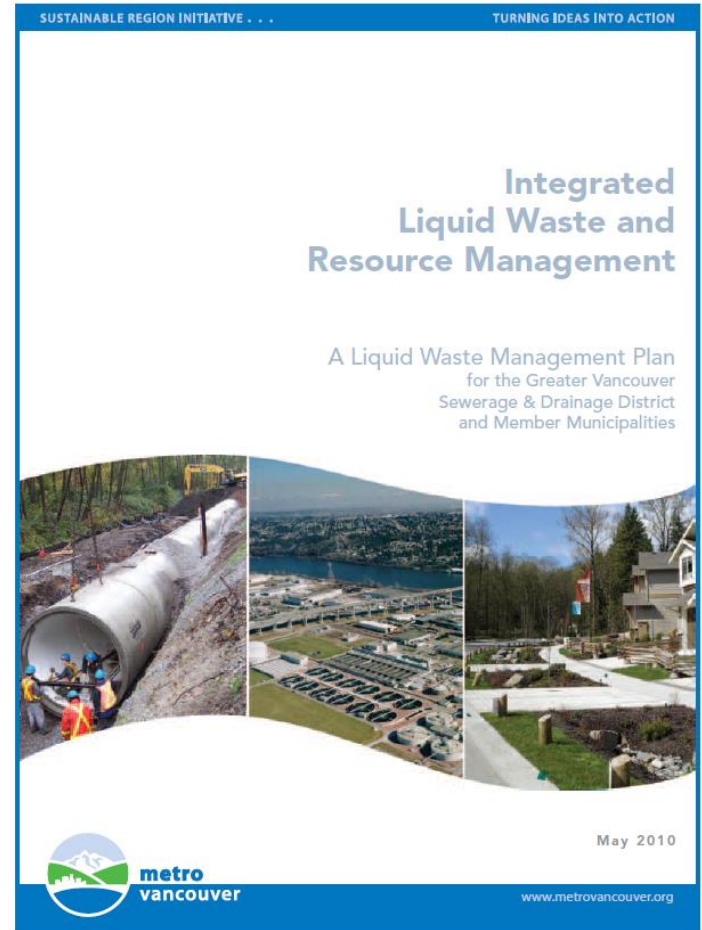
# LIQUID WASTE MANAGEMENT PLANNING

- Community-specific solutions for wastewater management
- Approved by the Minister of Environment & Climate Change Strategy
- BC *Environmental Management Act*



# EXISTING PLAN

- Approved by the Province in 2011
- Key goals include public and environmental protection, resource recovery and cost-efficiency
- Strategies and actions for Metro Vancouver and members



# WHY UPDATE THE PLAN?

- Continue protecting human health and the environment
- Integrate Indigenous perspectives
- Incorporate innovative technologies and new scientific developments
- Reflect societal priorities
- Align with other initiatives
- Meet regulatory requirements



Kayakers in Burrard Inlet

# TIMELINE

Community engagement throughout

Liquid Waste Committee and Board direction at conclusion of each phase



# HEALTHY WATERS

For All. Forever.

## “Healthy Waters”

Protect the waters that sustain life and make this region a great place to be

## “For All”

Protect these waters for all life

## “Forever”

Protect these waters for generations to come



# FOCUS AREAS FOR THE NEXT PLAN

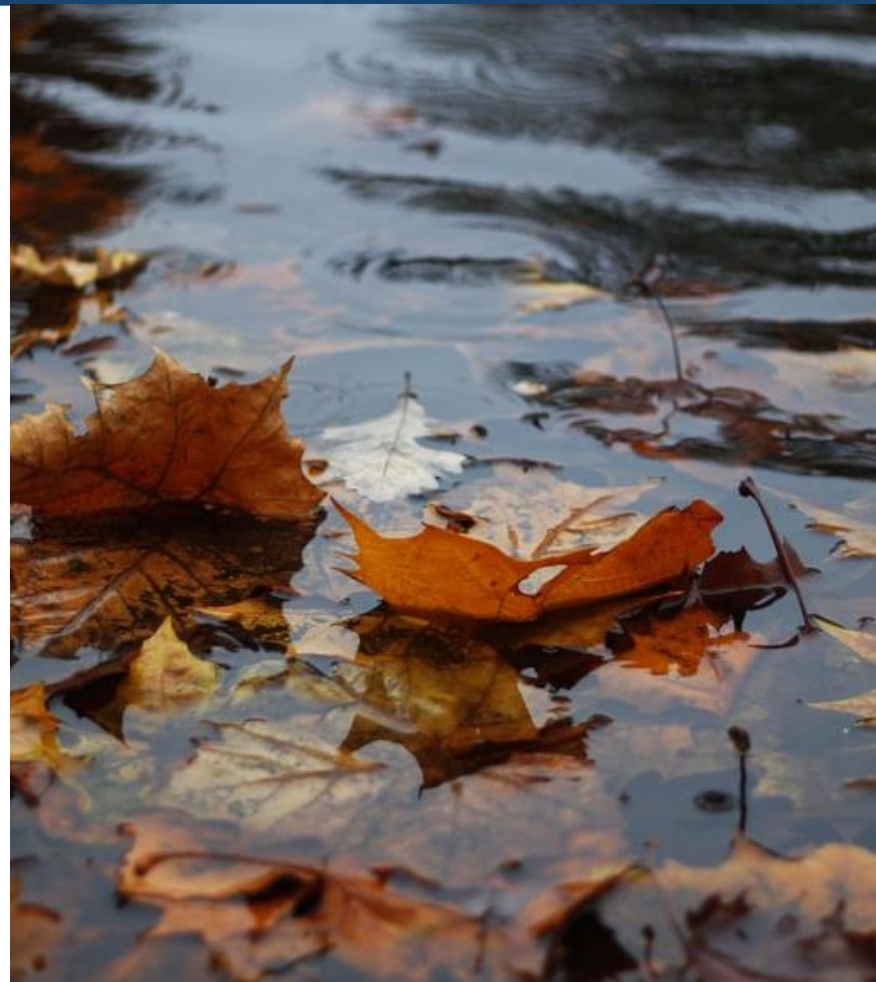
- Sewer overflows during wet weather
- Stormwater management
- Source control



Burrard Inlet

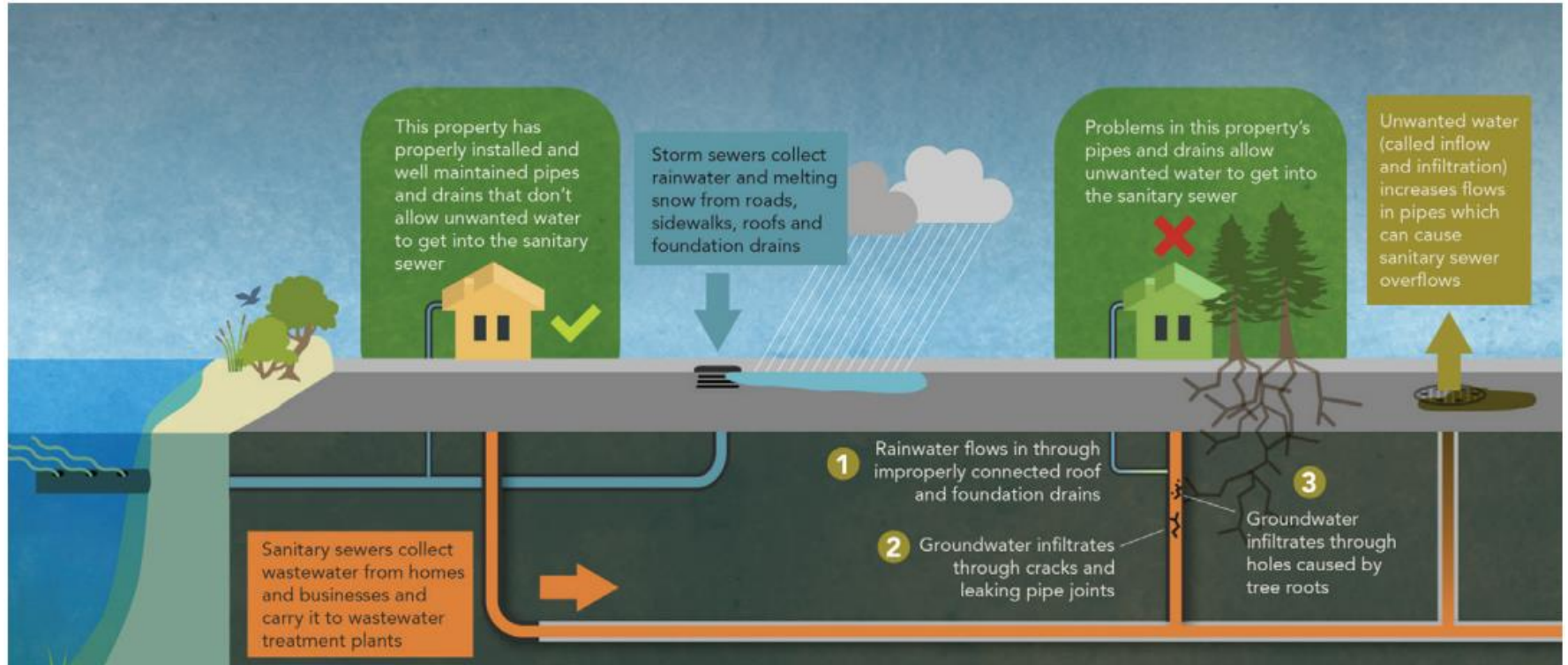
# SEWER OVERFLOWS

- Legacy of combined sewers in Vancouver, New Westminster and Burnaby
- Dry or light rain: Wastewater treatment plants typically treat all combined and sanitary sewage
- Significant rain: Capacity is often exceeded leading to sewer overflows



# WET WEATHER SEWER OVERFLOWS

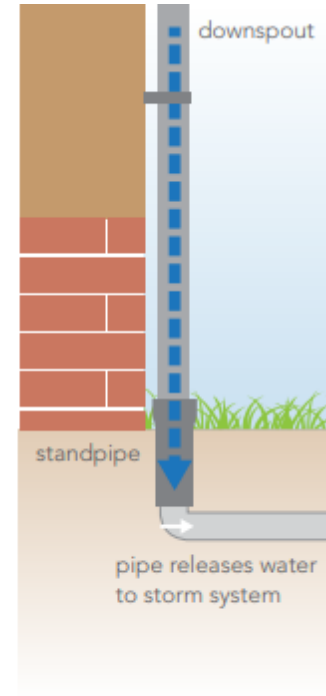
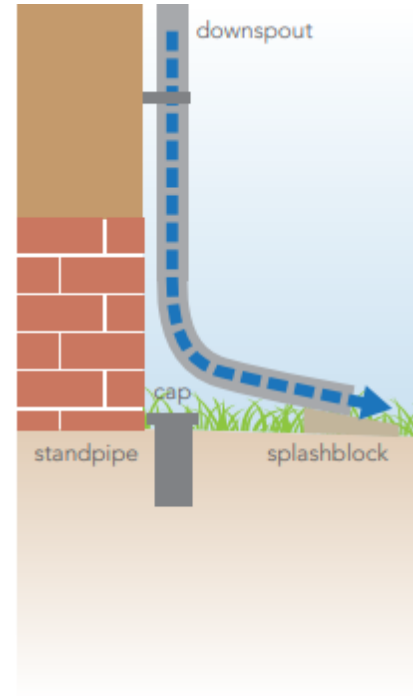
## Inflow and Infiltration



# WHAT YOU CAN DO

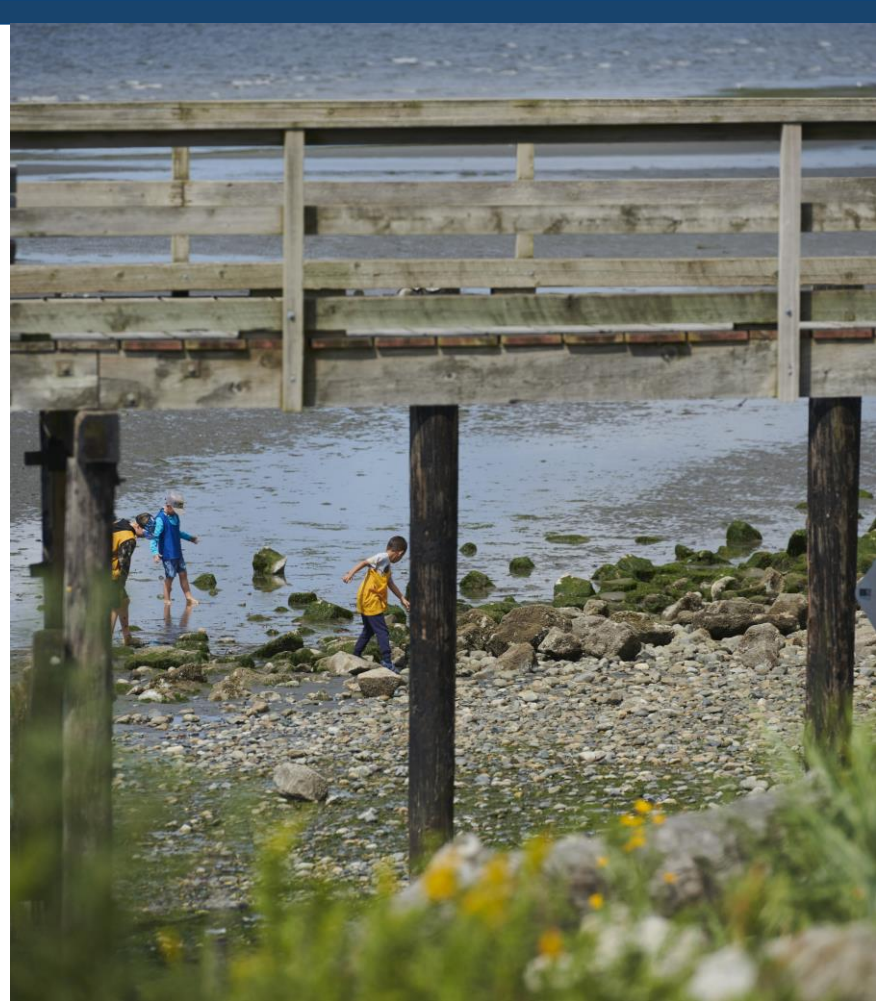
More than half of the inflow and infiltration entering the sewer system comes from private pipes, so:

- Fix or replace old or damaged pipes
- Avoid planting trees or shrubs on top of your pipes
- Make sure sanitary sewer pipe is properly connected



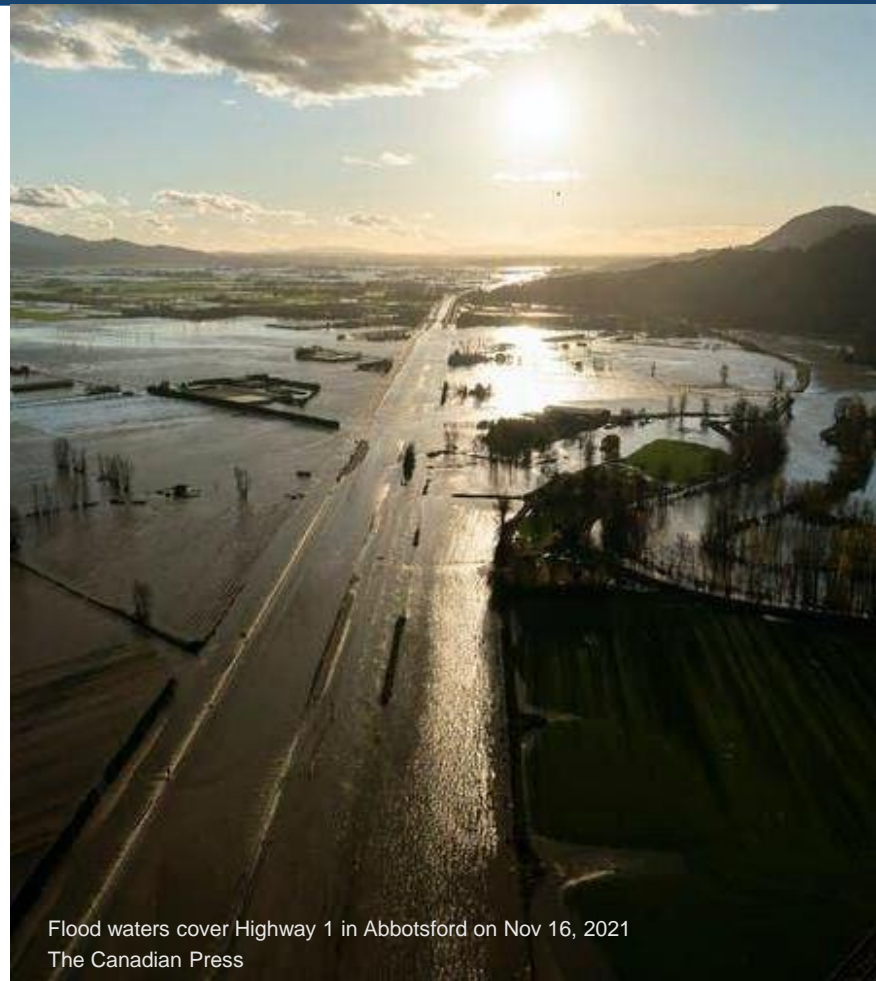
# STORMWATER MANAGEMENT

- Rainwater is a critical resource, sustaining local water bodies
- However, its runoff (“stormwater”) can cause challenges that include:
  - Flood risk
  - Water quality challenges as runoff picks up pollutants and contaminants
  - Contributions to sewage overflows



# FLOOD RISK

- Protection of people and property from flooding was original focus of urban drainage
- This function is increasingly challenged by climate change, including rainfall intensities and sea level rise



Flood waters cover Highway 1 in Abbotsford on Nov 16, 2021  
The Canadian Press

# CONTAMINANTS

- Risk from “conventional” contaminants (e.g., oil, metals) is a significant concern, but is generally well understood
- Developing understanding of risk from other contaminants (CECs) detected in rainwater and stormwater



Tire-related chemical (6PPD-Quinone) linked with adult coho salmon deaths in urban streams, University of Washington

# HOW YOU CAN HELP

- Never put anything down a storm drain
  - Motor oil, antifreeze, paints, solvents, household chemicals
- Create a rain friendly yard
  - Build a rain garden
  - Disconnect roof downspouts



## SOURCE CONTROL

- Pollution prevention strategy that aims to reduce pollution at the source – from homes, businesses, and industry
- The most efficient and cost-effective method of reducing contaminants in our waters

metrovancover



Get just as clean  
with less

## HOW YOU CAN HELP

- Reduce chemicals in your yard
- Wash in cold water to reduce microfibers
- Use less laundry soap to reduce surfactants
- Only flush toilet paper
- Always dispose of fats, oils, and grease in your green bin – not down the drain

metrovancover

A kitchen sink drain is shown with a cartoon face with large white eyes and a black mouth. A speech bubble with a black outline and white background is positioned above the drain, containing the text "oil clogs pipes". The background is a light-colored surface with brown, greasy splatters and drips around the drain.

**oil clogs  
pipes**

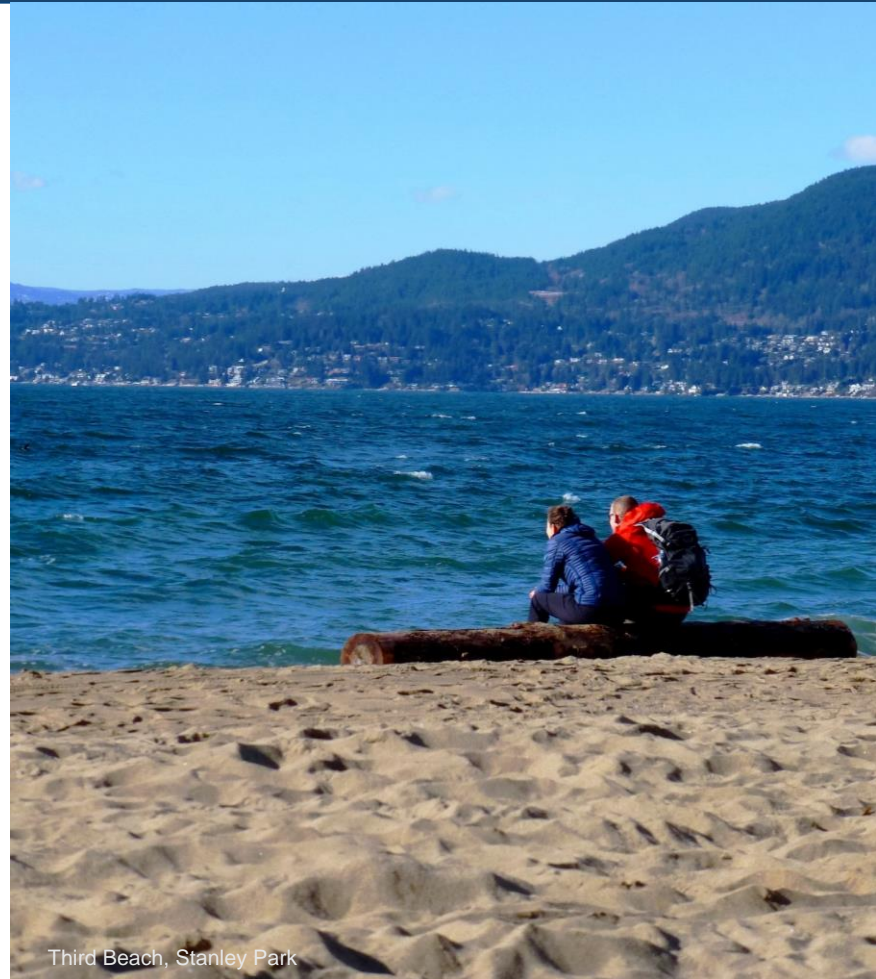
WIPE IT  GREEN BIN IT

# PUBLIC ENGAGEMENT

Online survey in early 2023

Visit [metrovancover.org](https://metrovancover.org) to sign up for updates

Email questions to [lwmp@metrovancover.org](mailto:lwmp@metrovancover.org)



Third Beach, Stanley Park



Questions?

**metro**vancouver