

Santa Rosa Sunrise  
Rotary Club  
P. O. Box 14953  
Santa Rosa, CA 95402

10/5/95

Delbert Raby  
9358 Lakewood Drive  
Windsor, CA 95492



**FIRST CLASS**

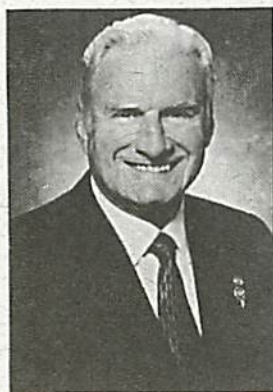
For those who have inquiring minds ...  
The Rotary Club of Santa Rosa Sunrise "Morning Star"



# SANTA ROSA SUNRISE MORNING STAR

Rotary Club of Santa Rosa Sunrise  
Rotary International District #5130

Chartered June 30, 1986  
Meets every Thursday 7:15am  
at The Doubletree Hotel  
3555 Round Barn Blvd.



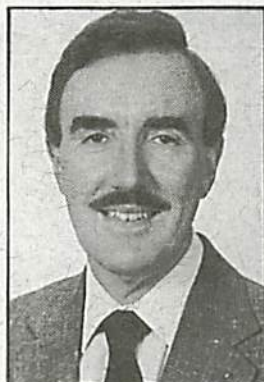
*"Act with Integrity,  
Serve with Love,  
Work for Peace"*

Herbert G. Brown  
Rotary International  
President



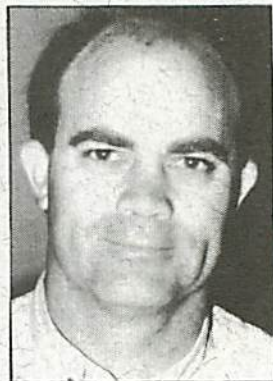
*"Rotary is Community"*

Cameron L. (Cam) Reeves  
District #5130  
District Governor



*"Have Some Fun,  
Do Some Good"*

Steve Owles  
S.R. Sunrise Rotary  
Club President



**VOLUME 14:** October 5, 1995  
**EDITOR:** Steve Herron **FAX:** 524-3318  
**PUBLISHER:** Ken Coker

***“South Of The Border...Let The Selling Begin!!!***

**This is it, Hombres...Time to sell those tickets.** Hopefully by this time each of you has received your 35 tickets from your team leader. If you haven't yet or if you have any questions, please contact your team leader ASAP! Next week we will start collecting funds from team leaders and tallying results...so lets start selling!!!

**Who Is On My Team???**

Just in case you weren't sure, the six fundraising teams are as follows:

Steve Herron

Warren Smith  
Archie Julien  
Albert Handelman  
Jeff Young  
Jo Gennuso  
Frank Cercone  
Tom Eakin  
Vicki Lockner  
Terry Cheney

Eve Nighswonger

Gary Bayless  
Riki Intner  
Gary Jensen  
Jerry Johnson  
Larry Martin  
Del Raby  
Mary Russell  
Dave Lorenzen

Jim McCracken

Leroy Carlenzoli  
Ken Coker  
Gary Doolittle  
Robert Kingsley  
Russ McCracken  
Nancie Mika  
Eric Van Cleave  
Stan Walker  
Rolf Wessman

Susan Agnew

Mike Sass  
Steve Beckwith  
Dale Zumfelde  
Steve Davis  
Bill Anderson  
Pat Solar  
Nancy Aita  
Scott Holder

Art King

Al Abramson  
Gregg Dobbin  
Carl Jacobson  
Dan Lambert  
Robert Scott  
Peter Treleaven  
John Watson

Dave Brown

Shauna Lorenzen  
Steve Olson  
Randy Seelye  
Rick Franke  
Russ Lockner  
John Jones  
Bruce Reyes  
Steve Owles  
Bob Jarvis

### **An Experience Of A Lifetime!!!**

The District GSE Committee is looking for qualified individuals for this year's team. The team will be going to the Philippines from February 23, 1996, until March 24, 1996. Team *leaders* must be Rotarians, and the **deadline** to have your application in is **October 9, 1995**. GSE team *members* cannot be Rotarians, or closely relate to a Rotarian. The deadline for applications as a team member is October 31, 1995. For more information and applications, contact Jo Gennuso.

### **Family Education Center's Fund-Raising Dinner**

Mark your calendars for October 19th, the night of Family Education Center's annual fund-raiser dinner at Piper-Sonoma Vineyards. This year's gala event will include a sumptuous dinner menu catered by A La Heart, and self-guided tours of the winery. Proceeds will benefit FEC, to assist in their providing counseling, education and support services for adults and families in our community. Tickets are available for \$75.00 and are tax-deductible. For additional questions and tickets contact FEC at 762-8835 or contact Riki Intner.

### **About That Foudation Dinner on Nov. 4th...**

Don't forget to make reservations for the Annual Rotary Foundation Dinner to be held at the Red Lion on **November 4th**. Also, as final clarification and contrary to my earlier comments, the South Of The Border raffle tickets are completely separate and unrelated to the Foundation dinner in November, which has its own separate raffle for that event. As such, **Foundation raffle tickets** will be awarded for a pledge to your PH before the November 4th dinner. See Stan for tickets and to RSVP for the 11/4 dinner.

### **The Governor Is Coming...**

Del Raby reminds and asks each of us to attend the reception Wednesday evening, **October 18th at The Doubletree** to meet with Rotary District Governor Cameron Reeves and his wife, Sharon. This will be an informal gathering over refreshments, and a great opportunity to talk with Cameron and share ideas on the

Club and RI's outreach worldwide. Spouses are encouraged to attend. See you there!

### **Raffle Proceeds To Benefit...**

Similar to last year, all raffle proceeds (net of raffle expenses) will go directly to a number of charitable causes. This year's specific designation of proceeds will be determined by the board, later in the year. However, a sampling of last year's beneficiaries which collectively split \$15,000 in net raffle proceeds included:

<b>C.A.R.E.</b>	<b>Council On Aging</b>
<b>Mayan Eyecare Project</b>	<b>SRKSEP</b>
<b>Special Olympics</b>	<b>Face-To-Face</b>

These ticket proceeds are not going to fund ordinary Rotary operating expenses. Furthermore, the raffle expenses are primarily the cost of the prizes. To help you in your efforts, John Voyles has provided two attached reference items providing details of the raffle. Feel free to copy use these in your sales effort.

### **Details Of The Raffle Prizes**

To arm you with the best available information to assist in your sales efforts, we'll restate a few of the key points about the raffle prizes. First, Second And Third Prize trips must each be taken during the month of January, 1996. Each trip includes round trip air fare and lodging for two (2) individuals.

The club team that sells the greatest number of tickets by the end of the raffle contest (October 26, 1995) will be dining at The Owles home, prepared by Chef (President) Steve, himself. No details on the menu, but rest assured it will be a grand feast. operating expenses. Furthermore, the raffle expenses are primarily the cost of the prizes.

### **"Please See Attached..."**

Dale Zumfelde has prepared an attachment to this week's bulletin, which outlines the efforts of our World Community Service Project

# Santa Rosa Sunrise Rotary Club

## CALENDAR OF EVENTS

OCT. 18	Wednesday	Eve. Board Mtg. w/Dist. Governor (Cameron Reeves)
OCT. 19	Thursday	Family Education Center's Fund-raising Dinner at Piper-Sonoma Vineyards
OCT. 31	Tuesday	Deadline For Feb. '96 GSE Team Membership Applications
NOV. 4	Saturday	Rotary Foundation Dinner--Red Lion

---

## UPCOMING PROGRAMS

**Terry Cheney - Program Chairperson**

Oct. 12	Ellen Draper - "First Night! Santa Rosa"
Oct. 19	Cameron Reeves - Rotary District Governor
Oct. 26	Supreme Court Judge Ray Giordano

### *New Year's Day Rose Parade*

Carl & Judy Jacobson, Del & Harriet Raby, and Archie & Susan Julien will be joining other Rotarians from around the world on December 30 & 31st to help decorate Rotary International's 1996 Rose Parade Float entry. Our Sunrise Rotary couples will be in the Colorado Blvd. grandstands on New Year's Day to enjoy the parade and participate in other festivities following the event. If you have an interest in joining these couples, please contact Carl.

### **A Request For Toys...**

As Vicki Lockner mentioned at our 9/28th club meeting, Steel Land School was awarded a grant to work with "at risk" student. As a new site, they are in the process of setting up attractive rooms in which aides and children meet. They are in need of games, dolls, toys of all kinds. Perhaps you have some toys at your home that your children have "outgrown" or that they are no longer interested in. They would welcome any donations of clean, usable toys that you might be able to make. Please bring donations to Steele Lane School or a Rotary meeting. For questions, contact Vicki Lockner.

# SUNRISE ROTARY CLUB MEMBERSHIP ROSTER

<u>Last</u>	<u>First</u>	<u>Spouse</u>	<u>Home #</u>	<u>Work #</u>	<u>Classification</u>
Abramson	Al+		576-8163	546-9220	Executive Gifts
Agnew	Susan	Art+	539-4892	545-8080	Banking
Aita	Nancy+	Bob	823-9139	575-3115	Insurance Health
Anderson	Bill	Robyn	525-0500	525-8200	Law Personal Injury
Bayless*	Gary	Lynda	542-6102	527-7300	Jewelry Design & Manufacture
Beckwith	Steve	Sally	538-9011	544-6942	Real Estate Appraisal
Brown	David+	Sue	539-1265	778-9000	Office Equipment
Carlenzoli	Leroy+	Carol	542-8964	542-6465	Civil Engineer
Cercone	Frank	Jan	526-9852	542-1644	Dentist Orthodontics
Cheney	Terry	Jerry	544-1099	543-5214	Human Resources
Coker	Ken+		527-0880	525-5600	Architecture
Davis*	Dan	Susan	527-0724	545-7010	Law Business
Davis	Steve	Rita	525-9306	575-9595	Dentistry
Dobbin	Gregg	Jan	579-0656	579-0554	Investment Advisor
Dolinsek	John+	Kathy	546-7308	544-5493	Insurance Life/Disability
Doolittle	Gary+	Carolyn+	545-9354	546-0825	Attorney Services
Eakin	Tom	Joanne	579-5734	829-4600	Food Processing
Finch	Buster+	Marilyn	238-9061/507	238-4461/507	Honorary Member
Franke	Rick	Judy	538-2451	526-3303	Dentistry
Gennuso	Jo		576-0542	526-5444	Corporate Travel
Handelman*	Albert	Paula	838-7779	528-2882	Law Estate Planning
Herron	Steve		584-8960	524-3102	Banking
Holder	Scott	Patricia	838-6040	539-9436	Investments-Bonds
Intner*	Riki+	Bob+	539-4829	526-3141	Marriage Family Counseling
Jacobson*	Carl+	Judy+	837-8200	578-2370	Engineering Consulting
Jarvis	Bob		523-2854	575-1198	Maxillofacial Surgery
Jensen	Gary	Linda	546-5217	577-8202	Furniture Rental
Johnson*	Jerry		573-1368	573-4840	Banking/Commercial Loans
Jones	John+	Ardys	526-5001	546-0272	CPA/Business Planning
Julian	Archie+	Susan	433-6256	546-7822	Equipment Leasing
King	Art	Irene	539-5980	527-0800	CPA Accounting
Kingsley*	Robert	Jeanne	575-4719	527-9035	Mortgage Loans
Lambert	Dan+	Kay	539-7294	528-7711	Computer Systems
Lockner	Russell		526-3775	544-4133	Real Estate Commercial
Lockner	Vicki		544-1593	522-3260	Elementary Education
Lorenzen	David+	Shauna	526-1107	588-0707	Radio
Lorenzen	Shauna	David	526-1107	543-0172	Radio Broadcasting-Mgmt.
Marlin	Larry	Laura	887-2606	526-2922	Travel
McCracken	Jim	Priscilla	528-8681	546-4470	Graphic Arts
McCracken*	Russ	Deborah	538-2806	538-0868	Cyclery Retail
Mika*	Nancie	Mark	546-7364	524-4200	Law Products Liability
Nighswonger	Eve		584-3912	546-3465	Florist
Olsen	Steve	Lynn	546-3973	578-6033	Law Domestic Relations
Owles*	Steve	Cathy	528-1484	573-3818	Manufacturing Furniture
Raby	Delbert+	Harriett+	838-6701		Senior Active
Reyes	Bruce+		538-0793	523-2310	Chiropractic
Russell	Mary		539-3203	524-2006	Fund Development
Sass	Mike	Tracy	526-1965	523-1987	Construction Residential
Scott	Robert	Kathy	539-4341	544-5800	Business Forms
Seelye*	Randy		528-2149	526-8585	Newspaper Publishing
Smith	Warren+	Wendy	542-8108	525-7693	Industrial Coatings
Solar	Patricia	Richard	838-3928	546-8984	Banking Commercial
Treleaven	Peter+	Marie+	539-9190	524-1024	Securities
Van Cleave	Eric+	Lori	823-6601	838-9822	Mortgage Lending
Voyles	John		869-2664	869-2664	Prepress
Walker	Stan+	Valeri	525-0152	586-1054	Construction Commercial
Watson	John	Doris	573-0433	823-8333	Property Management
Wessman	Rolf		578-0230	578-0230	Computer Services
Young	Jeff	Karen	578-7746	579-5200	Insurance Casualty
Zager	Hank+	Dolty	544-0579		Honorary Member
Zumfelde*	Dale		526-2632	526-2632	Architecture Residential

\*Board Member

+Paul Harris Fellow

#Additional Active

## Sonoma County Make-Up Locations

### MONDAY

**WEST SANTA ROSA-12:15pm**  
Los Robles-Cleveland & Edwards

**HEALDSBURG-12:00pm**  
Masonic Temple-Plaza & Center

### TUESDAY

**WINDSOR-7:15am**  
Masonic Hall, 371 W. River Rd.

**SANTA ROSA EAST-12:15pm**  
Flamingo Hotel-4th & Farmers Lane

**ROHNERT PARK/COTATI-7:15am**  
Red Lion Inn-1 Red Lion Dr.

**GUERNEVILLE-6:30pm**  
Northwoods Restaurant-Hwy. 116

### WEDNESDAY

**SANTA ROSA-12:10pm**  
Flamingo Hotel-4th & Farmers Ln.

**PETALUMA VALLEY-12:15pm**  
Adobe Creek Golf Club-Frates Rd.

**SONOMA VALLEY-12:15pm**  
Sonoma Golf & Country Club-1770 Arnold Dr.

### THURSDAY

**PETALUMA-12:15pm**  
Veteran's Mem. Bldg.-1094 Petaluma Blvd. S.

**CLOVERDALE-12:15pm**  
Grapevine Restaurant  
101 & South St.

### FRIDAY

**SEBASTOPOL-12:15pm**  
Veteran's Memorial Bldg.-282 High St.

---

This bulletin is sponsored by the following Rotarian:

**PROFESSIONAL  
SERVICES** THE  
ATTORNEYS'  
AID

---

"SOLUTIONS TO YOUR DOCUMENT NEEDS"

---

GARY M. DOOLITTLE

(707) 546-0825  
(800) 458-8282  
(707) 575-8649 Fax

P.O. Box 3366  
Santa Rosa, CA  
95402-3366

Santa Rosa Sunrise  
Rotary Club  
P. O. Box 14953  
Santa Rosa, CA 95402

10/17/95



Delbert Raby  
9358 Lakewood Drive  
Windsor, CA 95492

**FIRST CLASS**

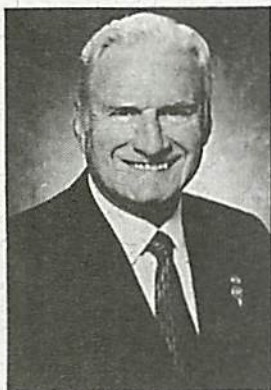
For those who have inquiring minds ...  
The Rotary Club of Santa Rosa Sunrise "Morning Star"



# SANTA ROSA SUNRISE MORNING STAR

Rotary Club of Santa Rosa Sunrise  
Rotary International District #5130

Chartered June 30, 1986  
Meets every Thursday 7:15am  
at The Doubletree Hotel  
3555 Round Barn Blvd.



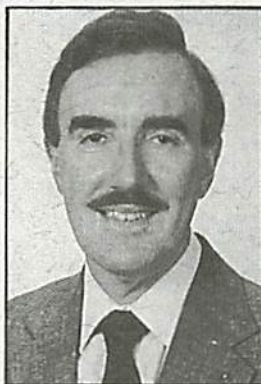
*"Act with Integrity,  
Serve with Love,  
Work for Peace"*

Herbert G. Brown  
Rotary International  
President



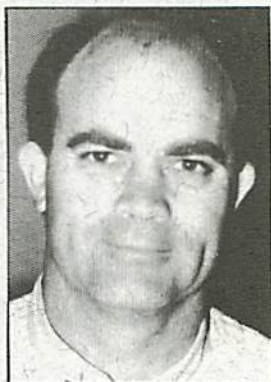
*"Rotary is Community"*

Cameron L. (Cam) Reeves  
District #5130  
District Governor



*"Have Some Fun,  
Do Some Good"*

Steve Owles  
S.R. Sunrise Rotary  
Club President



**VOLUME 15:** October 12, 1995  
**EDITOR:** Steve Herron **FAX: 524-3318**  
**PUBLISHER:** Ken Coker

***“South Of The Border”...Sell, Sell, Sell!!!***

**This is it, Hombres...It's *crunch time* for ticket sales!!!.** There are only two weeks remaining until the October 26th drawing. As of the last meeting, the six teams had combined sales of approximately 300 tickets for the initial two weeks of the fund-raiser. That puts us well behind last year's pace, so we need to get selling NOW! If you need additional tickets or if you have any questions, please contact your team leader ASAP!

**Who Is On My Team???**

Just in case you weren't sure, the six fundraising teams are as follows:

Steve Herron

Warren Smith  
Archie Julien  
Albert Handelman  
Jeff Young  
Jo Gennuso  
Frank Cercone  
Tom Eakin  
Vicki Lockner  
Terry Cheney

Eve Nighswonger

Gary Bayless  
Riki Intner  
Gary Jensen  
Jerry Johnson  
Larry Martin  
Del Raby  
Mary Russell  
Dave Lorenzen

Jim McCracken

Leroy Carlenzoli  
Ken Coker  
Gary Doolittle  
Robert Kingsley  
Russ McCracken  
Nancie Mika  
Eric Van Cleave  
Stan Walker  
Rolf Wessman

Susan Agnew

Mike Sass  
Steve Beckwith  
Dale Zumfelde  
Steve Davis  
Bill Anderson  
Pat Solar  
Nancy Aita  
Scott Holder

Art King

Al Abramson  
Gregg Dobbin  
Carl Jacobson  
Dan Lambert  
Robert Scott  
Peter Treleven  
John Watson

Dave Brown

Shauna Lorenzen  
Steve Olson  
Randy Seelye  
Rick Franke  
Russ Lockner  
John Jones  
Bruce Reyes  
Steve Owles  
Bob Jarvis

### **Raffle Proceeds To Benefit...**

Similar to last year, all raffle proceeds (net of raffle expenses) will go directly to a number of charitable causes. This year's specific designation of proceeds will be determined by the board, later in the year. However, a sampling of last year's beneficiaries which collectively split \$15,000 in net raffle proceeds included:

**C.A.R.E.                      Council On Aging**  
**Mayan Eyecare Project      SRKSEP**  
**Special Olympics      Face-To-Face**

These ticket proceeds are not going to fund ordinary Rotary operating expenses. Furthermore, the raffle expenses are primarily the cost of the prizes.

### **Details Of The Raffle Prizes**

To arm you with the best available information to assist in your sales efforts, we'll restate a few of the key points about the raffle prizes. First, Second and Third Prize trips must each be taken during the month of January, 1996. Each trip includes round trip air fare and lodging for two (2) individuals.

The club team that sells the greatest number of tickets by the end of the raffle contest (October 26, 1995) will be dining at The Owles home, prepared by Chef (President) Steve, himself. No details on the menu, but rest assured it will be a grand feast.

### **A Follow-up For First Night Santa Rosa!**

Ellen Draper left some brochures with us this week regarding details of this big New Year's Eve Celebration planned for downtown SR. This is expected to be a major community family event, following its successful record across the US. This is not an anti-drinking campaign...just a Safe & Sane alternative celebration for the entire family. The night will be complete with a midnight, full-blown fireworks display. Think of this as a celebration for the kids. Buttons are now on sale for admission at \$5.00 each. If you

or your organization has an interest in supporting this event (financial or volunteer), please contact Ellen at 524-7212.

## **Santa Rosa Sunrise Rotary Club**

### **CALENDAR OF EVENTS**

<b>OCT. 18</b>	Wednesday	Eve. Board Mtg. w/Dist. Governor (Cameron Reeves)
<b>OCT. 19</b>	Thursday	Family Education Center's Fund-raising Dinner at Piper-Sonoma Vineyards
<b>OCT. 31</b>	Tuesday	Deadline For Feb. '96 GSE Team Membership Applications
<b>NOV. 4</b>	Saturday	Rotary Foundation Dinner--Red Lion

---

### **UPCOMING PROGRAMS**

**Terry Cheney - Program Chairperson**

<b>Oct. 19</b>	<b>Cameron Reeves - Rotary District Governor</b>
<b>Oct. 26</b>	<b>Superior Court Judge Ray Giordano</b>
<b>Nov. 2</b>	<b>Jerry Droll - Mgr. of Flex Products</b>

### *New Year's Day Rose Parade*

Carl & Judy Jacobson, Del & Harriet Raby, and Archie & Susan Julien will be joining other Rotarians from around the world on December 30 & 31st to help decorate Rotary International's 1996 Rose Parade Float entry. Our Sunrise Rotary couples will be in the Colorado Blvd. grandstands on New Year's Day to enjoy the parade and participate in other festivities following the event. If you have an interest in joining these couples, please contact Carl.

### **A Request For Toys...**

As Vicki Lockner mentioned at our 9/28th club meeting, Steel Lane School was awarded a grant to work with "at risk" student. As a new site, they are in the process of setting up attractive rooms in which aides and children meet. They are in need of games, dolls, toys of all kinds. Perhaps you have some toys at your home that your children have "outgrown" or that they are no longer interested in. They would welcome any donations of clean, usable toys that you might be able to. Please bring donations to Steele Lane School or a Rotary meeting. For questions, contact Vicki Lockner.

### **An Experience Of A Lifetime!!!**

The District GSE Committee is looking for qualified individuals for this year's team. The team will be going to the Philippines from February 23, 1996, until March 24, 1996. GSE team *members* cannot be Rotarians, or closely relate to a Rotarian. The deadline for applications as a team member is **October 31, 1995**. For more information and applications, contact Jo Gennuso.

### **Family Education Center's Fund-Raising Dinner**

Mark your calendars for October 19th, the night of Family Education Center's annual fund-raiser dinner at Piper-Sonoma Vineyards. This year's gala event will include a sumptuous dinner menu catered by A La Heart, and self-guided tours of the winery. Proceeds will benefit FEC, to assist in their providing counseling, education and support services for adults and families in our community. Tickets are available for \$75.00 and are tax-deductible. For additional questions and tickets contact FEC at 762-8835 or contact Riki Intner.

### **About That Foudation Dinner on Nov. 4th...**

Don't forget to make reservations for the Annual Rotary Foundation Dinner to be held at the Red Lion on **November 4th**. Also, as final clarification and contrary to my earlier comments, the South Of The Border raffle tickets are completely separate and unrelated to the Foundation dinner in November, which has its own separate raffle for that event. As such, **Foundation raffle tickets** will be awarded for a pledge to your PH before the November 4th dinner. See Stan for tickets and to RSVP for the 11/4 dinner.

### **The Governor Is Coming...**

Del Raby reminds and asks each of us to attend the reception Wednesday evening from 6:00-7:00pm, **October 18th at The Doubletree** to meet with Rotary District Governor Cameron Reeves and his wife, Sharon. This will be an informal gathering over refreshments, and a great opportunity to talk with Cameron Reeve and share ideas on the Club and RI's outreach worldwide. Spouses are encouraged to attend. See you there!

# SUNRISE ROTARY CLUB MEMBERSHIP ROSTER

<u>Last</u>	<u>First</u>	<u>Spouse</u>	<u>Home #</u>	<u>Work #</u>	<u>Classification</u>
Abramson	Al+		576-8163	546-9220	Executive Gifts
Agnew	Susan	Art+	539-4892	545-8080	Banking
Aila	Nancy+	Bob	823-9139	575-3115	Insurance Health
Anderson	Bill	Robyn	525-0500	525-8200	Law Personal Injury
Bayless*	Gary	Lynda	542-6102	527-7300	Jewelry Design & Manufacture
Beckwith	Steve	Sally	538-9011	544-6942	Real Estate Appraisal
Brown	David+	Sue	539-1265	778-9000	Office Equipment
Carlenzoli	Leroy+	Carol	542-8964	542-6465	Civil Engineer
Cercone	Frank	Jan	526-9852	542-1644	Dentist Orthodontics
Cheney	Terry	Jerry	544-1099	543-5214	Human Resources
Coker	Ken+		527-0880	525-5600	Architecture
Davis*	Dan	Susan	527-0724	545-7010	Law Business
Davis	Steve	Rita	525-9306	575-9595	Dentistry
Dobbin	Gregg	Jan	579-0656	579-0554	Investment Advisor
Dolinsek	John+	Kathy	546-7306	544-5493	Insurance Life/Disability
Doolittle	Gary+	Carolyn+	545-9354	546-0825	Attorney Services
Eakin	Tom	Joanne	579-5734	829-4600	Food Processing
Finch	Buster+	Marilyn	238-9061/507	238-4461/507	Honorary Member
Franke	Rick	Judy	538-2451	526-3303	Dentistry
Gennuso	Jo		576-0542	526-5444	Corporate Travel
Handelman*	Albert	Paula	838-7779	528-2882	Law Estate Planning
Herron	Steve		584-8960	524-3102	Banking
Holder	Scott	Patricia	838-6040	539-9436	Investments-Bonds
Intner*	Riki+	Bob+	539-4829	526-3141	Marriage Family Counseling
Jacobson*	Carl+	Judy+	837-8200	578-2370	Engineering Consulting
Jarvis	Bob		523-2854	575-1198	Maxillofacial Surgery
Jensen	Gary	Linda	546-5217	577-8202	Furniture Rental
Johnson*	Jerry		573-1368	573-4840	Banking/Commercial Loans
Jones	John+	Ardys	526-5001	546-0272	CPA/Business Planning
Julian	Archie+	Susan	433-6256	546-7822	Equipment Leasing
King	Art	Irene	539-5980	527-0800	CPA Accounting
Kingsley*	Robert	Jeanne	575-4719	527-9035	Mortgage Loans
Lambert	Dan+	Kay	539-7294	528-7711	Computer Systems
Lockner	Russell		526-3775	544-4133	Real Estate Commercial
Lockner	Vicki		544-1593	522-3260	Elementary Education
Lorenzen	David+	Shauna	526-1107	588-0707	Radio
Lorenzen	Shauna	David	526-1107	543-0172	Radio Broadcasting-Mgmt.
Martin	Larry	Laura	887-2606	526-2922	Travel
McCracken	Jim	Priscilla	528-8681	546-4470	Graphic Arts
McCracken*	Russ	Deborah	538-2806	538-0868	Cyclery Retail
Mika*	Nancie	Mark	546-7364	524-4200	Law Products Liability
Nighswonger	Eve		584-3912	546-3465	Florist
Olsen	Steve	Lynn	546-3973	578-6033	Law Domestic Relations
Owles*	Steve	Cathy	528-1484	573-3818	Manufacturing Furniture
Raby	Delbert+	Harriett+	838-6701		Senior Active
Reyes	Bruce+		538-0793	523-2310	Chiropractic
Russell	Mary		539-3203	524-2006	Fund Development
Sass	Mike	Tracy	526-1965	523-1987	Construction Residential
Scott	Robert	Kathy	539-4341	544-5800	Business Forms
Seelye*	Randy		528-2149	526-8585	Newspaper Publishing
Smith	Warren+	Wendy	542-8108	525-7693	Industrial Coatings
Solar	Patricia	Richard	838-3928	546-8984	Banking Commercial
Treleaven	Peter+	Marie+	539-9190	524-1024	Securities
Van Cleave	Eric+	Lori	823-6601	838-9822	Mortgage Lending
Voyles	John		869-2664	869-2664	Prepress
Walker	Stan+	Valeri	525-0152	586-1054	Construction Commercial
Watson	John	Doris	573-0433	823-8333	Property Management
Wessman	Rolf		578-0230	578-0230	Computer Services
Young	Jeff	Karen	578-7746	579-5200	Insurance Casualty
Zager	Hank+	Dotty	544-0579		Honorary Member
Zumfelde*	Dale		526-2632	526-2632	Architecture Residential

\*Board Member

+Paul Harris Fellow

#Additional Active

## Sonoma County Make-Up Locations

### MONDAY

**WEST SANTA ROSA-12:15pm**  
Los Robles-Cleveland & Edwards

**HEALDSBURG-12:00pm**  
Masonic Temple-Plaza & Center

### TUESDAY

**WINDSOR-7:15am**  
Masonic Hall, 371 W. River Rd.

**SANTA ROSA EAST-12:15pm**  
Flamingo Hotel-4th & Farmers Lane

**ROHNERT PARK/COTATI-7:15am**  
Red Lion Inn-1 Red Lion Dr.

**GUERNEVILLE-6:30pm**  
Northwoods Restaurant-Hwy. 116

### WEDNESDAY

**SANTA ROSA-12:10pm**  
Flamingo Hotel-4th & Farmers Ln.

**PETALUMA VALLEY-12:15pm**  
Adobe Creek Golf Club-Frates Rd.

**SONOMA VALLEY-12:15pm**  
Sonoma Golf & Country Club-1770 Arnold Dr.

### THURSDAY

**PETALUMA-12:15pm**  
Veteran's Mem. Bldg.-1094 Petaluma Blvd. S.

**CLOVERDALE-12:15pm**  
Grapevine Restaurant  
101 & South St.

### FRIDAY

**SEBASTOPOL-12:15pm**  
Veteran's Memorial Bldg.-282 High St.

---

This bulletin is sponsored by the following Rotarian:

**PROFESSIONAL  
SERVICES** THE  
ATTORNEYS'  
AID

---

"SOLUTIONS TO YOUR DOCUMENT NEEDS"

---

**GARY M. DOOLITTLE**

(707) 546-0825  
(800) 458-8282  
(707) 575-8649 Fax

P.O. Box 3366  
Santa Rosa, CA  
95402-3366

Santa Rosa Sunrise  
Rotary Club  
P. O. Box 14953  
Santa Rosa, CA 95402



10-19-95

Delbert Raby  
9358 Lakewood Drive  
Windsor, CA 95492

**FIRST CLASS**

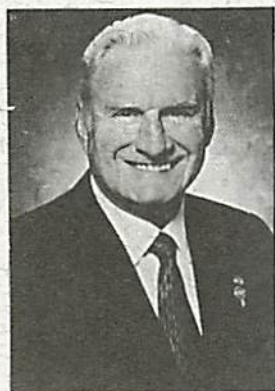
For those who have inquiring minds ...  
The Rotary Club of Santa Rosa Sunrise "Morning Star"



# SANTA ROSA SUNRISE MORNING STAR

Rotary Club of Santa Rosa Sunrise  
Rotary International District #5130

Chartered June 30, 1986  
Meets every Thursday 7:15am  
at The Doubletree Hotel  
3555 Round Barn Blvd.



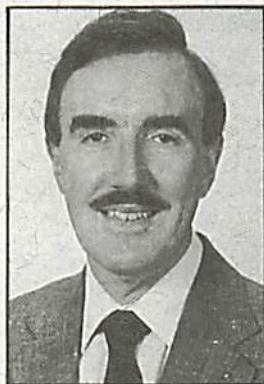
*"Act with Integrity,  
Serve with Love,  
Work for Peace"*

Herbert G. Brown  
Rotary International  
President



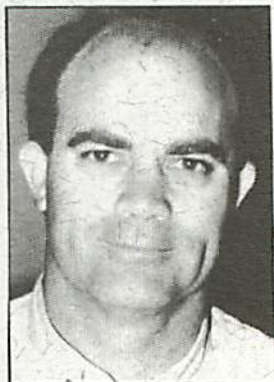
*"Rotary is Community"*

Cameron L. (Cam) Reeves  
District #5130  
District Governor



*"Have Some Fun,  
Do Some Good"*

Steve Owles  
S.R. Sunrise Rotary  
Club President



# Santa Rosa Sunrise Rotary Club

## CALENDAR OF EVENTS

OCT. 26	Thursday	South Of The Border Raffle Drawing [Last chance to get your tickets in.]
OCT. 31	Tuesday	Deadline For Feb. '96 GSE Team Membership Applications
NOV. 4	Saturday	Rotary Foundation Dinner--Red Lion

---

## UPCOMING PROGRAMS

**Terry Cheney - Program Chairperson**

<b>Oct. 26</b>	<b>Superior Court Judge Ray Giordano</b>
<b>Nov. 2</b>	<b>Jerry Droll - Mgr. of Flex Products</b>
<b>Nov. 9</b>	<b>Don Green - Advanced Fibre Communications</b>

### *New Year's Day Rose Parade*

Carl & Judy Jacobson, Del & Harriet Raby, and Archie & Susan Julien will be joining other Rotarians from around the world on December 30 & 31st to help decorate Rotary International's 1996 Rose Parade Float entry. Our Sunrise Rotary couples will be in the Colorado Blvd. grandstands on New Year's Day to enjoy the parade and participate in other festivities following the event. If you have an interest in joining these couples, please contact Carl.

### **A Request For Toys...**

As Vicki Lockner mentioned at our 9/28th club meeting, Steel Lane School was awarded a grant to work with "at risk" student. As a new site, they are in the process of setting up attractive rooms in which aides and children meet. They are in need of games, dolls, toys of all kinds. Perhaps you have some toys at your home that your children have "outgrown" or that they are no longer interested in. They would welcome any donations of clean, usable toys that you might be able to. Please bring donations to Steele Lane School or a Rotary meeting. For questions, contact Vicki Lockner.

## RECOGNITION CORNER

### **Welcoming A New Member...Chris Fehr**

In a manner fitting well with District Governor's call for membership, Russ McCracken and Art King presented the club with our newest recruit, Chris Fehr. When you meet Chris extend a Sunrise Rotary welcome for he and his wife, Laura. Good job, Russ and thank you!

### **Another PH Fellow...Randy Seelye**

Gary Doolittle presented Randy Seelye (president in waiting) with his Paul Harris Fellow award. The District Governor echoed Gary's sentiments praise for Randy's generosity and commitment to the club. Thank you, Randy!

### **Going Above & Beyond Duty...**

Peter Treleaven was also recognized by Cameron for his achievement in contributing \$2,000 to his Paul Harris fund. Why, some might ask, if you are only expected to reach a \$1,000 level? Because as Peter stated so earnestly, he "believes in Rotary" and the good it does worldwide. Peter clearly embodies the attributes of what Cameron referred to as a true Rotarian. Congratulations and thank you, Peter!

### **Miranda Says Thank You!**

Congratulations to Scott & Patricia Holder on the recent birth of little Miranda Jeanette. Accordingly, fellow Sunrisers pulled together \$210.00 which was matched (and then some) by The Holders and placed into a nice little growth fund for her future. Welcome to the world, little future Rotarian. A grateful *thank you* to all club members from The Holder family.

### **Recent Birthdays**

Carolyn Doolittle      Cathy Owles      Kent Seegmiller

**VOLUME 16:** October 19, 1995  
**EDITOR:** Steve Herron **FAX:** 524-3318  
**PUBLISHER:** Ken Coker

***"South Of The Border"...Sell, Sell, Sell!!!***

**This is it, Hombres...It's major *crunch time* for ticket sales!!!. This is the last week for selling those tickets before the **October 26th drawing**. As of today, the six teams had combined sales of approximately 553 tickets for the three weeks of the fund-raiser. We're still far behind last year's pace, so we need pull out all the stops and start *smiling and dialing* today!!! If you are struggling with hitting the 35 ticket goal or have any questions, don't wait to ask for help...call your team leader ASAP!!!**

**Who Is On My Team???**

Just in case you weren't sure, the six fundraising teams are as follows:

Steve Herron

Warren Smith  
Archie Julien  
Albert Handelman  
Jeff Young  
Jo Gennuso  
Frank Cercone  
Tom Eakin  
Vicki Lockner  
Terry Cheney

Eve Nighswonger

Gary Bayless  
Riki Intner  
Gary Jensen  
Jerry Johnson  
Larry Martin  
Del Raby  
Mary Russell  
Dave Lorenzen

Jim McCracken

Leroy Carlenzoli  
Ken Coker  
Gary Doolittle  
Robert Kingsley  
Russ McCracken  
Nancie Mika  
Eric Van Cleave  
Stan Walker  
Rolf Wessman

Susan Agnew

Mike Sass  
Steve Beckwith  
Dale Zumfelde  
Steve Davis  
Bill Anderson  
Pat Solar  
Nancy Aita  
Scott Holder

Art King

Al Abramson  
Gregg Dobbin  
Carl Jacobson  
Dan Lambert  
Robert Scott  
Peter Treleaven  
John Watson

Dave Brown

Shauna Lorenzen  
Steve Olson  
Randy Seelye  
Rick Franke  
Russ Lockner  
John Jones  
Bruce Reyes  
Steve Owles  
Bob Jarvis

### **Raffle Proceeds To Benefit...**

Similar to last year, all raffle proceeds (net of raffle expenses) will go directly to a number of charitable causes. This year's specific designation of proceeds will be determined by the board, later in the year. However, a sampling of last year's beneficiaries which collectively split \$15,000 in net raffle proceeds included:

**C.A.R.E.                      Council On Aging**  
**Mayan Eyecare Project      SRKSEP**  
**Special Olympics      Face-To-Face**

These ticket proceeds are not going to fund ordinary Rotary operating expenses. Furthermore, the raffle expenses are primarily the cost of the prizes.

### **Details Of The Raffle Prizes**

To arm you with the best available information to assist in your sales efforts, we'll restate a few of the key points about the raffle prizes. First, Second and Third Prize trips must each be taken during the month of January, 1996. Each trip includes round trip air fare and lodging for two (2) individuals.

The club team that sells the greatest number of tickets by the end of the raffle contest (October 26, 1995) will be dining at The Owles home, prepared by Chef (President) Steve, himself. No details on the menu, but rest assured it will be a grand feast.

### **An Experience Of A Lifetime!!!**

The District GSE Committee is looking for qualified individuals for this year's team. The team will be going to the Philippines from February 23, 1996, until March 24, 1996. GSE team members cannot be Rotarians, or closely relate to a Rotarian. The deadline for applications as a team member is **October 31, 1995**. For more information and applications, contact Jo Gennuso.

### **About That Foundation Dinner on Nov. 4th...**

Don't forget to make reservations for the Annual Rotary Foundation Dinner to be held at the Red Lion on **November 4th**. **Foundation** raffle tickets will be awarded for a pledge to your PH before the November 4th dinner. See Stan for tickets and to RSVP for the 11/4 dinner.

# SUNRISE ROTARY CLUB MEMBERSHIP ROSTER

<u>Last</u>	<u>First</u>	<u>Spouse</u>	<u>Home #</u>	<u>Work #</u>	<u>Classification</u>
Abramson	Al+		576-8163	546-9220	Executive Gifts
Agnew	Susan	Art+	539-4892	545-8080	Banking
Aita	Nancy+	Bob	823-9139	575-3115	Insurance Health
Anderson	Bill	Robyn	525-0500	525-8200	Law Personal Injury
Bayless*	Gary	Lynda	542-6102	527-7300	Jewelry Design & Manufacture
Beckwith	Steve	Sally	538-9011	544-6942	Real Estate Appraisal
Brown	David+	Sue	539-1265	778-9000	Office Equipment
Carlenzoli	Leroy+	Carol	542-8964	542-6465	Civil Engineer
Cercone	Frank	Jan	526-9852	542-1644	Dentist Orthodontics
Cheney	Terry	Jerry	544-1099	543-5214	Human Resources
Coker	Ken+		527-0880	525-5600	Architecture
Davis*	Dan	Susan	527-0724	545-7010	Law Business
Davis	Steve	Rita	525-9306	575-9595	Dentistry
Dobbin	Gregg	Jan	579-0656	579-0554	Investment Advisor
Dolinsek	John+	Kathy	546-7306	544-5493	Insurance Life/Disability
Doolittle	Gary+	Carolyn+	545-9354	546-0825	Attorney Services
Eakin	Tom	Joanne	579-5734	829-4600	Food Processing
Finch	Buster+	Marilyn	238-9061/507	238-4461/507	Honorary Member
Franke	Rick	Judy	538-2451	526-3303	Dentistry
Gennuso	Jo		576-0542	526-5444	Corporate Travel
Handelman*	Albert	Paula	838-7779	528-2882	Law Estate Planning
Herron	Steve		584-8960	524-3102	Banking
Holder	Scott	Patricia	838-6040	539-9436	Investments-Bonds
Intner*	Riki+	Bob+	539-4829	526-3141	Marriage Family Counseling
Jacobson*	Carl+	Judy+	837-8200	578-2370	Engineering Consulting
Jensen	Gary	Bob	523-2854	575-1198	Maxillofacial Surgery
Johnson*	Jerry	Linda	546-5217	577-8202	Furniture Rental
Jones	John+	Ardys	573-1368	573-4840	Banking/Commercial Loans
Julian	Archie+	Susan	526-5001	546-0272	CPA/Business Planning
King	Art	Irene	433-6256	546-7822	Equipment Leasing
Kingsley*	Robert	Jeanne	539-5980	527-0800	CPA Accounting
Lambert	Dan+	Kay	575-4719	527-9035	Mortgage Loans
Lockner	Russell		539-7294	528-7711	Computer Systems
Lockner	Vicki		526-3775	544-4133	Real Estate Commercial
Lorenzen	David+	Shauna	544-1593	522-3260	Elementary Education
Lorenzen	Shauna	David	526-1107	588-0707	Radio
Martin	Larry	Laura	526-1107	543-0172	Radio Broadcasting-Mgmt.
McCracken	Jim	Priscilla	887-2606	526-2922	Travel
McCracken*	Russ	Deborah	528-8681	546-4470	Graphic Arts
Mika*	Nancie	Mark	538-2806	538-0868	Cyclery Retail
Nighswonger	Eve		546-7364	524-4200	Law Products Liability
Olsen	Steve	Lynn	584-3912	546-3465	Florist
Owles*	Steve	Cathy	546-3973	578-6033	Law Domestic Relations
Raby	Delbert+	Harriett+	528-1484	573-3818	Manufacturing Furniture
Reyes	Bruce+		838-6701	523-2310	Senior Active
Russell	Mary		538-0793	523-2310	Chiropractic
Sass	Mike	Tracy	539-3203	524-2006	Fund Development
Scott	Robert	Kathy	526-1965	523-1987	Construction Residential
Seelye*	Randy		539-4341	544-5800	Business Forms
Smith	Warren+	Wendy	528-2149	526-8585	Newspaper Publishing
Solar	Patricia	Richard	542-8108	525-7693	Industrial Coatings
Treleaven	Peter+	Marie+	838-3928	546-8984	Banking Commercial
Van Cleave	Eric+	Lori	539-9190	524-1024	Securities
Voyles	John		823-6601	838-9822	Mortgage Lending
Walker	Stan+	Valeri	869-2664	869-2664	Prepress
Watson	John	Doris	525-0152	586-1054	Construction Commercial
Wessman	Rolf		573-0433	823-8333	Property Management
Young	Jeff	Karen	578-0230	578-0230	Computer Services
Zager	Hank+	Dotty	578-7746	579-5200	Insurance Casualty
Zumfelde*	Dale		544-0579		Honorary Member
			526-2632	526-2632	Architecture Residential

\*Board Member

+Paul Harris Fellow

#Additional Active

## Sonoma County Make-Up Locations

### MONDAY

**WEST SANTA ROSA-12:15pm**  
Los Robles-Cleveland & Edwards

**HEALDSBURG-12:00pm**  
Masonic Temple-Plaza & Center

### TUESDAY

**WINDSOR-7:15am**  
Masonic Hall, 371 W. River Rd.

**SANTA ROSA EAST-12:15pm**  
Flamingo Hotel-4th & Farmers Lane

**ROHNERT PARK/COTATI-7:15am**  
Red Lion Inn-1 Red Lion Dr.

**GUERNEVILLE-6:30pm**  
Northwoods Restaurant-Hwy. 116

### WEDNESDAY

**SANTA ROSA-12:10pm**  
Flamingo Hotel-4th & Farmers Ln.

**PETALUMA VALLEY-12:15pm**  
Adobe Creek Golf Club-Frates Rd.

**SONOMA VALLEY-12:15pm**  
Sonoma Golf & Country Club-1770 Arnold Dr.

### THURSDAY

**PETALUMA-12:15pm**  
Veteran's Mem. Bldg.-1094 Petaluma Blvd. S.

**CLOVERDALE-12:15pm**  
Grapevine Restaurant  
101 & South St.

### FRIDAY

**SEBASTOPOL-12:15pm**  
Veteran's Memorial Bldg.-282 High St.

---

This bulletin is sponsored by the following Rotarian:

## **PROFESSIONAL SERVICES** THE ATTORNEYS' AID

---

*"SOLUTIONS TO YOUR DOCUMENT NEEDS"*

---

**GARY M. DOOLITTLE**

(707) 546-0825  
(800) 458-8282  
(707) 575-8649 Fax

P.O. Box 3366  
Santa Rosa, CA  
95402-3366

Santa Rosa Sunrise  
Rotary Club  
P. O. Box 14953  
Santa Rosa, CA 95402

10-26-95



U.S. POSTAGE

0.32

H METER 354086

Delbert Raby  
9358 Lakewood Drive  
Windsor, CA 95492

**FIRST CLASS**

For those who have inquiring minds ...  
The Rotary Club of Santa Rosa Sunrise "Morning Star"



# SANTA ROSA SUNRISE MORNING STAR

Rotary Club of Santa Rosa Sunrise  
Rotary International District #5130

Chartered June 30, 1986  
Meets every Thursday 7:15am  
at The Doubletree Hotel  
3555 Round Barn Blvd.



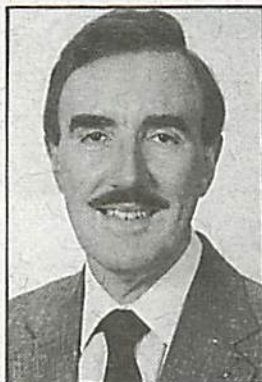
*"Act with Integrity,  
Serve with Love,  
Work for Peace"*

Herbert G. Brown  
Rotary International  
President



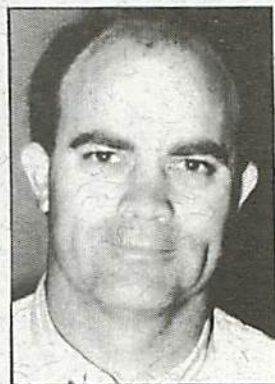
*"Rotary is Community"*

Cameron L. (Cam) Reeves  
District #5130  
District Governor



*"Have Some Fun,  
Do Some Good"*

Steve Owles  
S.R. Sunrise Rotary  
Club President



**VOLUME 17:** October 26, 1995

**EDITOR:** Steve Herron **FAX:** 524-3318

**PUBLISHER:** Ken Coker

### **Give Yourselves A Hand...We Did It!**

Well, it's over now and the Treasurer is still tallying the results. But rumor has it that we raised over \$15,000 (gross) in ticket proceeds. This last week's push in ticket sales was extraordinary, and just in the nick of time. We all know that fund-raising is difficult and not at the top of anyone's wish list as a club duty. We each deserve a pat on the back for our hard work this year. Special kudos go to Jerry Johnson, Mary Russell, John Voyles and Jo Gennuso for their extra-special commitment to the fund-raising process. The next time you run into these folks, let them know we appreciate their contribution to this critically important job!!!

### ***And The Winners Are...!!!***

With guest speaker Superior Court Judge Ray Giordano on hand to pull the three lucky raffle tickets, our South Of The Border raffle winners were selected. And the lucky three winners are:

**First Prize:** Ginnie Pitts/ 5-Day Mexican Cruise

**Second Prize:** Ray Byrne/ 3 Nights in Cabo San Lucas

**Third Prize:** Greg Gill/ 3 Nights in Puerto Vallarta

The winners are being notified and will be awarded with gift certificates for their respective prize trip. Congratulations to each of our winners...*Bon Voyage* and "*Hasta Lavista, Baby!*"

### **See You At The Foundation Dinner on Nov. 4th...**

Don't forget to make your plans for this Saturday's Annual Rotary Foundation Dinner held at the Red Lion in Rohnert Park. This is one of the two District Foundation dinners this year. Join your fellow Sunrisers as well as Rotarians from throughout Sonoma County for this special night. See Stan to RSVP for the dinner. Don't miss it!!!

# Santa Rosa Sunrise Rotary Club

## CALENDAR OF EVENTS

NOV. 4	Saturday	Rotary Foundation Dinner--Red Lion
NOV.	All Month	Rotary Foundation Month
MAY 16-17	Dist. Conference	Knociti Harbor Resort

---

## UPCOMING PROGRAMS

**Terry Cheney - Program Chairperson**

- Nov. 2**            **Jerry Droll - Mgr. of Flex Products**  
**Nov. 9**            **Don Green - Advanced Fibre Communications**  
**Nov. 16**          **Ben Stone - GSE Program**

### *New Year's Day Rose Parade*

Carl & Judy Jacobson, Del & Harriet Raby, and Archie & Susan Julien will be joining other Rotarians from around the world on December 30 & 31st to help decorate Rotary International's 1996 Rose Parade Float entry. Our Sunrise Rotary couples will be in the Colorado Blvd. grandstands on New Year's Day to enjoy the parade and participate in other festivities following the event. If you have an interest in joining these couples, please contact Carl.

### **A Request For Toys...**

As Vicki Lockner mentioned at our 9/28th club meeting, Steel Lane School was awarded a grant to work with "at risk" student. As a new site, they are in the process of setting up attractive rooms in which aides and children meet. They are in need of games, dolls, toys of all kinds. Perhaps you have some toys at your home that your children have "outgrown" or that they are no longer interested in. They would welcome any donations of clean, usable toys that you might be able to. Please bring donations to Steele Lane School or a Rotary meeting. For questions, contact Vicki Lockner.

## What Is Chef Steve Cooking Up?

The final team results for the raffle are being tabulated to determine the club team that sold the most South Of The Border raffle tickets this year. As promised, Chef Steve will be inviting the lucky team to the Owles private dining cabana to celebrate over a South Of The Border menu. Results of the winning team and outstanding club salespeople to be announced at this week's meeting. Stay tuned...

### Raffle Proceeds To Benefit...

Similar to last year, all raffle proceeds (net of raffle expenses) will go directly to a number of charitable causes. This year's specific designation of proceeds will be determined by the board, later in the year. However, a sampling of last year's beneficiaries which collectively split \$15,000 in net raffle proceeds included:

<b>C.A.R.E.</b>	<b>Council On Aging</b>
<b>Mayan Eyecare Project</b>	<b>SRKSEP</b>
<b>Special Olympics</b>	<b>Face-To-Face</b>

These ticket proceeds are not going to fund ordinary Rotary operating expenses. Furthermore, the raffle expenses are primarily the cost of the prizes.

### Back To Governor Cameron's Comments...

**“Act With Integrity...**

**Serve With Love...**

**Work For Peace”**

Also, to amplify the District Governor's praise for the Sunrise Club's two **“Quiet Rotarians”...Stan Walker & Carl Jacobson.** Their work, while not always in the club spotlight, is nonetheless greatly appreciated and respected.

## RECOGNITION CORNER

### **“Why Is It Every Time You Leave (Dear) Something Bad Happens...”**

Well, it happened again. While Leroy was *on retreat* hunting in Wyoming, the little woman was left behind to mow the lawn with no gas to power the lawnmower. Clearly, the Carlenzoli's have a *modern day* relationship. What will happen next time, Leroy? Weren't you taught as a boy scout to be prepared?

### **“Court Finds In Favor Of The Claimant”**

Congratulations to our own President Owles on his recent successful lawsuit in Small Claims Court. We understand that the fruits of Steve's *Moral Victory* were intangible, yet satisfying.

### **John's Birthday On A Mission...**

John Jones spent his recent birthday on a Church-sponsored mission in Haiti. While considerably more exciting than Bob Scott's modest celebration at home, John's *big day* consisted of examining first hand the raw sewage and poverty of Haiti. This sounds like a uniquely Rotarian way to celebrate the anniversary of one's life on this planet. Good to have you back, John and Happy Birthday.

### **High Fives!**

Acknowledging his recent engagement to deliver a riveting speech on the “Generation-Skipping Transfer Tax”, our resident Trust Attorney, Albert Handelman pledged \$100.00 to his Paul Harris Fund. Thanks for the pledge, Albert! And regarding your interest in speaking to the club in the future...*we'll be in touch.*

### **Recent Birthdays**

Bob Scott      Mike Sass      John Jones      Warren Smith

### **Anniversaries**

Riki & Bob Intner

# SUNRISE ROTARY CLUB MEMBERSHIP ROSTER

<u>Last</u>	<u>First</u>	<u>Spouse</u>	<u>Home #</u>	<u>Work #</u>	<u>Classification</u>
Abramson	Al+		576-8163	546-9220	Executive Gifts
Agnew	Susan	Art+	539-4892	545-8080	Banking
Aita	Nancy+	Bob	823-9139	575-3115	Insurance Health
Anderson	Bill	Robyn	525-0500	525-8200	Law Personal Injury
Bayless*	Gary	Lynda	542-6102	527-7300	Jewelry Design & Manufacture
Beckwith	Steve	Sally	538-9011	544-6942	Real Estate Appraisal
Brown	David+	Sue	539-1265	778-9000	Office Equipment
Carlenzoli	Leroy+	Carol	542-8964	542-6465	Civil Engineer
Cercone	Frank	Jan	526-9852	542-1644	Dentist Orthodontics
Cheney	Terry	Jerry	544-1099	543-5214	Human Resources
Coker	Ken+		527-0880	525-5600	Architecture
Davis*	Dan	Susan	527-0724	545-7010	Law Business
Davis	Steve	Rita	525-9306	575-9595	Dentistry
Dobbin	Gregg	Jan	579-0656	579-0554	Investment Advisor
Dolinsek	John+	Kathy	546-7306	544-5493	Insurance Life/Disability
Doolittle	Gary+	Carolyn+	545-9354	546-0825	Attorney Services
Eakin	Tom	Joanne	579-5734	829-4600	Food Processing
Feahr	Chris	Laura	538-9652	571-2020	Family Optometry
Finch	Buster+	Marilyn	238-9061/507	238-4461/507	Honorary Member
Franke	Rick	Judy	538-2451	526-3303	Dentistry
Gennuso	Jo		576-0542	526-5444	Corporate Travel
Handelman*	Albert	Paula	838-7779	528-2882	Law Estate Planning
Herron	Steve		584-8960	524-3102	Banking
Holder	Scott	Patricia	838-6040	539-9436	Investments-Bonds
Intner*	Riki+	Bob+	539-4829	526-3141	Marriage Family Counseling
Jacobson*	Carl+	Judy+	837-8200	578-2370	Engineering Consulting
Jarvis	Bob		523-2854	575-1198	Maxillofacial Surgery
Jensen	Gary	Linda	546-5217	577-8202	Furniture Rental
Johnson*	Jerry		573-1368	573-4840	Banking/Commercial Loans
Jones	John+	Ardys	526-5001	546-0272	CPA/Business Planning
Julian	Archie+	Susan	433-6256	546-7822	Equipment Leasing
King	Art	Irene	539-5980	527-0800	CPA Accounting
Kingsley*	Robert	Jeanne	575-4719	527-9035	Mortgage Loans
Lambert	Dan+	Kay	539-7294	528-7711	Computer Systems
Lockner	Russell		526-3775	544-4133	Real Estate Commercial
Lockner	Vicki		544-1593	522-3260	Elementary Education
Lorenzen	David+	Shauna	526-1107	588-0707	Radio
Lorenzen	Shauna	David	526-1107	543-0172	Radio Broadcasting-Mgmt.
Martin	Larry	Laura	887-2606	526-2922	Travel
McCracken	Jim	Priscilla	528-8681	546-4470	Graphic Arts
McCracken*	Russ	Deborah	538-2806	538-0868	Cyclery Retail
Mika*	Nancie	Mark	546-7364	524-4200	Law Products Liability
Nighswonger	Eve		584-3912	546-3465	Florist
Olsen	Steve	Lynn	546-3973	578-6033	Law Domestic Relations
Owles*	Steve	Cathy	528-1484	573-3818	Manufacturing Furniture
Raby	Delbert+	Harriett+	838-6701		Senior Active
Reyes	Bruce+		538-0793	523-2310	Chiropractic
Russell	Mary		539-3203	524-2006	Fund Development
Sass	Mike	Tracy	526-1965	523-1987	Construction Residential
Scott	Robert	Kathy	539-4341	544-5800	Business Forms
Seelye*	Randy		528-2149	526-8585	Newspaper Publishing
Smith	Warren+	Wendy	542-8108	525-7693	Industrial Coatings
Solar	Patricia	Richard	838-3928	546-8984	Banking Commercial
Treleaven	Peter+	Marie+	539-9190	524-1024	Securities
Van Cleave	Eric+	Lori	823-6601	838-9822	Mortgage Lending
Voyles	John		869-2664	869-2664	Prepress
Walker	Stan+	Valeri	525-0152	586-1054	Construction Commercial
Watson	John	Doris	573-0433	664-8899	Property Management
Wessman	Rolf		578-0230	578-0230	Computer Services
Young	Jeff	Karen	578-7746	579-5200	Insurance Casualty
Zager	Hank+	Dotty	544-0579		Honorary Member
Zumfelde*	Dale		869-9013	526-2632	Architecture Residential

\*Board Member

+Paul Harris Fellow

#Additional Active

## Sonoma County Make-Up Locations

### MONDAY

**WEST SANTA ROSA-12:15pm**  
Los Robles-Cleveland & Edwards

**HEALDSBURG-12:00pm**  
Masonic Temple-Plaza & Center

### TUESDAY

**WINDSOR-7:15am**  
Masonic Hall, 371 W. River Rd.

**SANTA ROSA EAST-12:15pm**  
Flamingo Hotel-4th & Farmers Lane

**ROHNERT PARK/COTATI-7:15am**  
Red Lion Inn-1 Red Lion Dr.

**GUERNEVILLE-6:30pm**  
Northwoods Restaurant-Hwy. 116

### WEDNESDAY

**SANTA ROSA-12:10pm**  
Flamingo Hotel-4th & Farmers Ln.

**PETALUMA VALLEY-12:15pm**  
Adobe Creek Golf Club-Frates Rd.

**SONOMA VALLEY-12:15pm**  
Sonoma Golf & Country Club-1770 Arnold Dr.

### THURSDAY

**PETALUMA-12:15pm**  
Veteran's Mem. Bldg.-1094 Petaluma Blvd. S.

**CLOVERDALE-12:15pm**  
Grapevine Restaurant  
101 & South St.

### FRIDAY

**SEBASTOPOL-12:15pm**  
Veteran's Memorial Bldg.-282 High St.

---

This bulletin is sponsored by the following Rotarian:

**PROFESSIONAL  
SERVICES** THE  
ATTORNEYS'  
AID

---

*"SOLUTIONS TO YOUR DOCUMENT NEEDS"*

---

**GARY M. DOOLITTLE**

(707) 546-0825  
(800) 458-8282  
(707) 575-8649 Fax

P.O. Box 3366  
Santa Rosa, CA  
95402-3366