



Winter
Weekly

Reader

Volume 140, Issue 200, January 7, 2016

The Plano Rotary Club
www.PlanoRotary.com

UPCOMING MEETINGS

Jan 7th

"Current Health Care
Issues & its impact on
Community Hospitals"
Charles Grassle & Ben
Harris-MCP

Jan 14th

"Senior Issues in Health-
care & Housing"
Avery de Sostoa-Brook-
dale Living

Jan 21st

"Annual MLK Holiday
Presentation"

JANUARY BIRTHDAYS

Pamela Little	Jan 04
Jo Vai	Jan 05
Lynette Pieper	Jan 06
Yoram Solomon	Jan 08
David McWhorter	Jan 15
Jerry Aris	Jan 17
L.B. Showalter	Jan 17
John Brodhead	Jan 20
Alan Feigenbaum	Jan 21

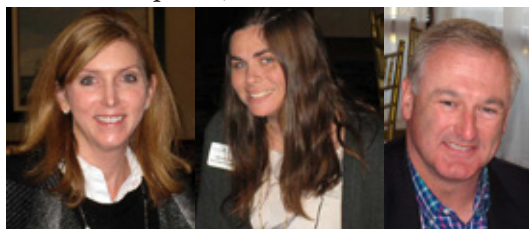


Scary Bob was AWOL, so **Randy Wright** took over as Cub Photographer with **Sainted Editor's** Point-n-Shoot micro-camera. Of course, he had to make a test shot, and since it was of **Sainted Editor** about to chow down on a helpless piece of chicken, and as **Scary Bob** routinely catches everybody else in candid poses they wish he hadn't (and that **Sainted Editor** uses!), it's only fair that he be embarrassed here. *Touché!*



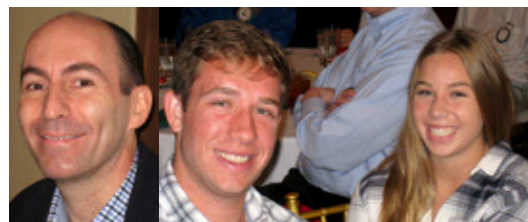
President Paperweight channeled **J. Arthur Rank** at 12:20, summoning **Blair Ritchey** for the Invocation and **Bob Botts** for the Pledge. **EVERYONE** was thanked for Greeting after Kelly insisted that we greet our table mates. Then **SERGEANT BARBERA** arose to introduce guests.

Nathan noted this to be the last meeting of the year! (We're skipping Christmas Eve and New Year's Eve, oddly enough.) Instead of here at Rotary, Nathan will be in New Orleans for the *Sugar Bowl* on New Year's Eve. Someone cruel inquired, "*Is that a real event?*"



Lynette welcomed **Melissa Smith**. **Jamee Jolly** introduced *Chamber* minion **Jenny Lynn**. Kelly welcomed back **Clay Curtiss**. **Yoram** introduced us to "*the first Israeli I met here*," **Orin Eliezer**. And **Mark Johnson** welcomed **Karen's** kids, **Derek and Claire Sheldon**.

Nathan accosted **Jamee Jolly** for **INSIDE THE ROTARIAN STUDIO**. Born in Dallas,



Jamee attended **W**innsboro High. "*Go, **RED RAIDERS!***" Since she's 5' high in heels, she wasn't called upon for basketball. However, she was the **Head Cheerleader**, a position she still holds, come to think of it.



She "*fell out of Baylor*," as Nathan put it, only to graduate from **TAMU Commerce** with a degree in Kinesthesiology.

Santa came every year to her house, once bringing her favorite gift, a Yorkshire Terrier named **Mitzi!** What she really wanted was tickets to the *New Kids on the Block* (since seen). Movie: *Christmas Vacation*. Song: *All I Want for Christmas* (is my two front teeth). Dinner: ham. Tree: fake. Drink: **PEPPERMINT SCHNAPPS**. Presents opened on Christmas Day.

She was introduced to Rotary 5 years ago by **Randy Wright** and **Kelly Palmer**. Also, her husband, **Marvin**, was President of **Frisco Rotary**. And, politically correct to the core, her favorite Rotary memory is "*seeing this fun group every week!*"

Jamie Schell, Foundation Chair, rose to regale us about the Foundation.

continued on page 2



tion of Polio. \$100s of millions have been raised in this effort, and currently, the *Gates Foundation* is matching contributions **3 to 1**, so now our *Paul Harris* monies go 4x further. And, in this **SPENDING SEASON**, we should throw spare cash at both Foundations to “good works” both domestically and internationally.



Kelly moved to the election of '16-17 Officers and Directors. He had **David McWhorter**, Nomination Committee Vice Chair, read the names of those volunteered. Then, faint from a 24-hour fast, Kelly lost track of the narrative, prompting those in the audience to watch him for signs of stroke, but, exhibiting none, he continued, calling for a motion to approve the nominees. **David Bowman** moved and Yoram Solomon seconded, and Kelly declared them appointed “by acclamation.” He asked those present to stand and receive our accolades.

He thanked **Camille, Carolyn, and Nancy** for their leadership of *Angel Tree*, our **Holiday Party**, and *Hendrick Scholarship Tournament*, respectively. Then he called upon **Alan Feigenbaum** to regale us about Club **SPIRITWARE**.

Program Chair, **Olin Jaye**, mounted the podium to introduce the day’s speakers from the *Plano Chamber of Commerce*. First was its Chairman, **Al Valente**, Co-Principal of **BELL & VALENTE**. And, of course, no introduction was required for its CEO, Jamee Jolly.

Al’s first remarks were to thank the “many of you who have served in this role” for their efforts. Then he and Jamee proceeded to tag-team us with **Death by 1,000 Statistics**.



The Chamber celebrates its 70th Anniversary next year, having been formed in 1946 (suggestively, one year after *Plano Rotary*; no wonder **Sinclair Lewis** lampooned Rotary with his “Booster’s Club” in *Babbitt*). Al went on to chronicle the strategic planning which resulted in changes to the Vision in 2014. The background to this slide featured the Schell

Insurance venue, to which Jamee remarked a “good looking building!” Al crowed that the Chamber’s 5-star accreditation places it in the top 1% of the nation’s chamber organizations.



He showed a photo of himself bracketed by pulchritude, declaring, “*It helps to surround yourself with excellent people.*” One of them, **Kim Moore**, will replace him shortly as Chair.

Al outlined the business of the Chamber as

- **ADVOCACY** for businesses
- **EDUCATION** for small businesses
- **INNOVATION** for new products and services
- **COLLABORATION** with **PISD**, City of Plano, and others

then Jamee took over.

Under **ADVOCACY**, she included the Chamber’s Public Policy Committee, its *Collin County Days* (lobbying in Austin), and *Plano Legislative Days* (ditto). She described how the Chamber is going to bat for the Bois d’Arc Dam, delayed by a meddlesome EPA.

Al returned to tout things **absent** without the Chamber’s advocacy: Central Expressway through Plano, the **PLANO BALLOON FESTIVAL** (celebrating 36 years), and formative bond packages over the decades. Referring to a photo of Plano in pioneering days, Al said, “*That’s Olin on the left.*”

The Chamber even claims modest credit for the deregulation of the electric industry!

Jamee lauded the Chamber’s **NETWORKING** and **PROFESSIONAL DEVELOPMENT**. She pointed to photo-ops like ribbon cuttings, and said that Chamber luncheons “engage the entire community.”

Under Community Awareness & Engagement, she cited the Chamber’s **LEADERSHIP PLANO** and its executive service, **PLANO 360**, a crash course in community information lasting a couple of days.

Al trotted out the 1,100 businesses and 1000s of employees served by the Chamber. Of members, 62% represent small businesses and another 12% are classified as large businesses. Non-profit and other entities fill out the remainder of the rolls.

Jamee told us that the majority category of membership is Medical and the 3rd largest is Insurance. The fastest growing category is Manufacturing. Geographically, the fastest growth is occurring along the Tollway. Such names as Toyota, Hilti, Liberty Mutual, and FedEx represent the Chamber’s immediate future.

A cartoon in her presentation contrasted yesterday’s Westward Ho toward California to today’s Eastward Ho to Texas. She counted 21 cranes over Plano recently, solidifying it as the State Bird.

Al confirmed that the highest job growth rate in the nation is here in Texas. An absolute 2+ million jobs recently added are greater than those in the next 4-5 states combined. (Of course, growth *per capita* may differ.) Population growth is “*accelerating in Collin County.*”

Jamee revealed the results of concerns among Chamber members to include:

- **REGIONAL GROWTH**
- **SKILLED/QUALIFIED WORKFORCE**
- **TAX & FISCAL POLICY**
- **HEALTHCARE**

She added that membership scales from \$320 to \$2800, and she urged us to “like” the Chamber on **facebook**.

David Bowman asked about the facets of the Affordable Care Act that concern members. He was told it was

rate changes and competition, not between insurance agencies but rather between employers for the affections of their employees.

Randy Wright, Booster *Extraordinaire*, told us “You’re going to get something good. Jamee put our Chamber of Commerce on the map nationally.”

Al mentioned that he has two weeks left to lord it over the Chamber before it’s Kim Moore’s turn.

Kelly noted that our gift paperweights were highly magnetic and “wipe everything out,” including the watch Al was clutching close to his Token-in-Lieu-of-Honorarium.

Carrolyn Moebius noted a bond hearing scheduled for this evening at 6 pm to hear public comment on the fate of **\$524 million**.

Kelly asked Randy to stand then praised him for yeoman efforts with Club Bylaws.

Someone asked about Kelly’s scarf, and he said that ~~Sainted~~ Editor had identified it as an Official **WHERE’S WALDO** accoutrement. He explained that at the morning’s Board meeting, only **Mary Jo** was dressed seasonally, so Kelly went home to address that issue.

Kelly elicited a call and response from Ean **SECRET SANTA** Sullivan, and the Club obliged with a chorus of “Ho ho ho!”

After cautioning us not to show up for the next two weeks, Kelly led us in the Four-Way Test and belled us into Happy Holidays at 1:00.



2016-17 Plano Rotary Club Officers and Directors

- President**..... David McWhorter
- Past President**..... Kelly Palmer
- President Elect** Rick Horne
- Secretary**..... Larry Bisno
- Treasurer** Jim Cooper
- Sgt. at Arms**..... Jason Kramer

Committee Chairs

- Service** Rick Horne
- Public Relations** Carrolyn Moebius
- Foundation** Jamie Schell
- Membership** Randy Wright

At Large

- 1-year term Mike Robnett
- Justin Roche
- Maria Mott
- 2-year term..... Sara Akers
- Mike Jobe
- Howard Matson

Nominating Committee

- Jason Rice
- Patti Schwartz

Plano Rotary Club
Board of Directors
2015-2016

- President**
Kelly Palmer
- President Elect**
David McWhorter
- Secretary**
Larry Bisno
- Treasurer**
Rick Horne
- Past President**
Earnest Burke
- Sergeant at Arms**
Nathan Barbera
- Membership Chair**
Randy Wright
- Membership Vice Chair**
Debbie Watson
- Service Chair**
Bob Pikna
- Service Vice Chair**
David Bowman
- Public Relationship Chair**
Mary Jo Dean
- Public Relationship Vice Chair**
Camille Ussery
- Club Admin Chair**
Olin Jaye
- Club Admin Vice Chair**
Phil Dyer
- Foundation Chair**
Jamie Schell
- Foundation Vice Chair**
Jamee Jolly
- New Generation Chair**
Alex Johnson
- At Large**
Kyle Walters
- Business Secretary**
Karen R. Sheldon
- Bulletin Editor**
Chris Parr
- Bulletin Photographer**
Robert Epstein
- Bulletin Designer**
Marsha Pigg
- Printing by Alphagraphics**
Alphagraphics
Preston & Spring Creek
The Plano Rotary Club
PO BOX 864316
Plano, TX 75086

- | | |
|----------------|-----------------|
| Guest | Guest of |
| Melissa Smith | Lynette Pieper |
| Jenny Lynn | Jamee Jolly |
| Clay Curtis | Kelly Palmer |
| Oren Eliezer | Yoram Solomon |
| Derek Sheldon | Mark Johnson |
| Claire Sheldon | Mark Johnson |

- | | |
|--------------------------|------------------|
| Visiting Rotarian | Home Club |
| None | |

- Proposed Member:** James Richardson
- Proposer:** Rick Maucieri
- Classification:** Fleet Management
- Proposed Member:** Clay Curtis
- Proposer:** Kelly Palmer
- Classification:** Commercial Construction



Support Our Advertisers



"a fence to you,
a reputation to us."

**ACE
FENCE-DFW**

Pam Little

(972) 578-5775
Fax (972) 578-1005

pam@acefences.com
1400 Capital Ave.
Plano, TX 75074

Allison's **AutoCare**

David Allison

1214 Avenue K
Plano, TX 75074

972-423-0434
www.allisons.com

alphagraphics

increase your reach

KENNY WILSON
OWNER

Plano
Phone: 972.867.9216
us408@alphagraphics.com

Richardson
Phone: 972.234.3033
Fax: 972.231.6968
us103@alphagraphics.com



Casey W. Stewart
Market President

972.309.0001 ext. 5937
214.863.5937 direct
214.863.6160 fax
caseystewart@anbtz.com

Plano Banking Center
1101 E. Plano Parkway, Suite E
Plano, TX 75074
Allen Banking Center
720 S. Greenville
Allen, TX 75002
www.anbtz.com

THE AUTO SHOP

Professional Automotive Repairs including:
Air Conditioning • Inspections • Clutches • Transmissions • Differentials
Engine repairs • Factory Scheduled Maintenance • Tune-Ups • Electrical • Brakes



Jerry P. Kezhaya
President

www.TheAutoShop.com

2560 East Plano Parkway
Plano, Texas 75074



972-578-0588 - T
972-881-0998 - F



www.huffines.net

HUFFINES
CHEVROLET

1001 Colt Rd @ Plano Pkwy
Plano

(972) 867-4000

**PLANO
HUFFINES**
HYUNDAI

909 Colt Rd @ Plano Pkwy
Plano

(972) 867-5000

HUFFINES
CHRYSLER Jeep
DODGE RAM

4500 W. Plano Pkwy @ Ohio
Plano

(972) 867-6000

All Service, Body and Parts Departments Open All Day Saturday

J. Marc Lewis & Associates
CORPORATE AND PERSONAL TAXATION

J. Marc Lewis JD, LL.M., EA
Enrolled to practice before the IRS

Lakeside Commons
5045 Lorimar Drive
Suite 280
Plano, TX 75093

marclinc@airmail.net
Tel: (972) 618-8224
Fax (972) 618-2021

Rick Maucieri
President

Grant Leighton
Associates

PO Box 865066
Plano, Texas 75086
972.422.0169 Voice
972.881.9373 Fax
rickm@glalandscape.com

**GRANT
LEIGHTON**
Professional
Landscapers

RICARDO KASMISKIE
Realtor®

Office: (972) 732-6000
Fax: (972) 732-6003
eFax: (972) 468-7547
Mobile: (972) 743-5324
ricardokasmiskie@kw.com
www.thecrestoftrust.com



KELLER WILLIAMS
REALTY

18381 Preston Road, Suite 150
Dallas, TX 75252

Each Office Independently Owned and Operated