



## WINTER Weekly

Volume 192, Issue 257, March 30th, 2017

# Reader

The Plano Rotary Club  
[www.PlanoRotary.com](http://www.PlanoRotary.com)

### UPCOMING MEETINGS

**Mar 30**  
**Mark Liebman**  
*How to Get Published*

**Apr 6**  
**Norman Beck**  
*The Man Who Will Bet on Anything*

**Apr 13 (OFFSITE MEETING)**  
*Plano Candidate Forum 11:00-1:00 (must RSVP)*  
*Capital One Conference Center*  
*8036 Dominion Parkway*  
*Plano TX 75024*



### MARCH BIRTHDAYS

Marshall Johnson	Mar 10
Jamie Schell	Mar 18
Bruce Glasscock	Mar 31

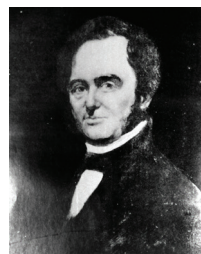


## JURASSIC PARK PLANO

**U**NFORTUNATELY, neither *Scary Bob* nor **Blair Ritchey** could be located for photo-duty. So the photo chores fell to *Sainted Editor's* guest, **Dr. John Timm**, who was unfamiliar with the camera, so made only a couple of *iPhone™* pix. The good news is that newly-inducted, **Howard Matson**-sponsored member, **Mike Brewer**, is an aficionado of imagery, so we'll have depth in that area!

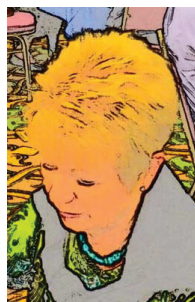
**King David** begged our attention at 12:13, calling upon **Blair Ritchey** (he was present!) for the Invocation and **Howard Shapiro** for the Pledge. We again had no Greeter.

**Jo Via** sashayed through her **3 MINUTES OF FAME**, starting with a song lyric: "*I wouldn't be standing right here if it wasn't for Texas.*" But she held the mic at arms' length, so she was encouraged to start over, speaking into it. She said that the **George Strait** ballad applied to her. Her ancestral family came to Texas with **Moses Austin** (father of **Stephen F. Austin**). They've been in Plano for 43 years.



Her motto is "*The rent you pay for time on Earth is spent by volunteers.*"

She's been married to **Gary** for 47 years, and she concedes he must have the patience of a saint who "*deserves a round of applause.*" They have two daughters, both of whom live here, and two grandchildren, one of whom we've met: **Cooper**. Her other grandchild, **Kate**, is almost four.



She's been the Executive Director of the **PLANO BALLOON FESTIVAL** for more than 25 years (starting pre-natally). The PBF is "*a little party we throw for 100,000 of our closest friends.*" It has a \$1.2M annual budget! Daughter **Jessica** serves as Media Director. It's every mother's dream to "*work with her daughter every day.*" Gary manages the venue. And they're grooming Cooper to carry on the tradition. So it's about to be a three-generation dynasty.

Her father was a Rotarian, and she's been one since 1991, rising to President. Her family has four generations of Paul Harris Fellows. "*I'm not taking any questions.*"

**King David** mentioned Jo's help with our **Blues, Brews and 'Ques** event. She's intimately familiar with the venue!



**He** told those of us who had received it to disregard his email extolling the virtues of our presence at the 13 April meeting to receive the blessings of 5810. That date is our off-campus event at **Capital**

**One**. (Instead, a later email amended that to **20 April**.)

**Kelly Palmer** was fêted for 31 years of Rotary service. **David** told us that **Bob Bauer** was at home, recovering from surgery and presumably enjoying our flowers, courtesy of **Karen Sheldon**. He would appreciate our calls, cards, and letters. He intends to be "*back as soon as possible.*"



Regarding 13 April, **David** said to be at 8016 Dominion Parkway at 11 am sharp to take part in the *Mayoral Candidate Forum*



jointly sponsored by the *Plano Rotary Club*, **Capital One**, and the *Plano Chamber of Commerce*. It will last until 1 pm. At the risk of influencing attendance, if you're unable to attend, it won't count against your perfect attendance; you needn't make it up.

That's April 13. On Saturday, May 13<sup>th</sup>, 5810 is holding a celebration of RI Foundation's birthday at *Frontiers of Flight Museum* (a cool venue where arch enemies, Spitfire and Messerschmitt, sit side-by-side). PRC has purchased a table since the District mandates representation by all clubs. **David** offered complimentary seats for couples interested.

Howard Matson read Mike Brewer the Rotary Act, inviting him to join 1.2M Rotarians in 33K clubs over 200 countries. He accepted, and the membership stood to welcome him into the Club. (He'll want to talk to **Sainted Editor** about photography! <hint, hint>)



**King David** urged all of us who toss our Rotarian Magazines (himself included) to bring them to meetings where they'll become part and parcel of New Member Packets.

**David** noted a joint Happy Hour with *Sunrise Rotary* on 29 March (yesterday, as you read this) at **VICKERY PARK**, 1011 15<sup>th</sup> Street. We were to have RSVPed to **Pat Miner**.

**Alan SPIRITWARE Feigenbaum** introduced the day's speaker, Professor **Louis Jacobs**, Paleontology, *SMU*.

Paleontology is the study of fossil animals and plants. Professor Jacobs is also the President of the *Institute for the Study of Earth and Man*. He is considered one of the world's foremost authorities on dinosaurs and other prehistoric creatures. He is a vertebrate paleontologist who utilizes the fossil record to answer significant questions about Earth and Life History. His fieldwork is currently focused in Angola, Antarctica, Alaska, and Mongolia.

Louis has published many books including

- *Cretaceous Airport, The Surprising Story of Real Dinosaurs at DFW*
- *Lone Star Dinosaurs*

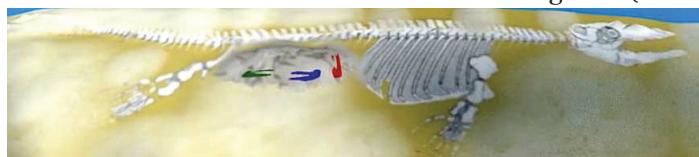
Alan met Louis in the 70s at the *University of Arizona* where he excitedly drew Alan to a microscope to view prehistoric mouse droppings! (*Mus coprolitus*)

Louis mentioned that he's presented at the *Nairobi* (Kenya) *Rotary* where he was first "introduced" to the Four-Way Test. He's admired it ever since. He also had a tenuous connection to Jo Via, his family having been part of the Austin 300 as well.

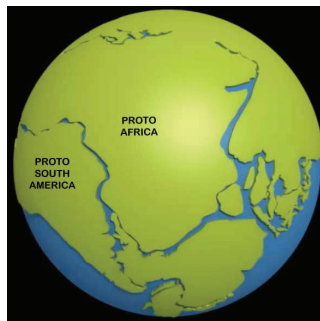


He referred to a Smithsonian exhibit of one of his Angola finds, a monasaur (think the sea monster that ate

**InGen's** raptor in the latest **JURASSIC PARK** movie) that had the skulls of three smaller monasaurs in its gut! (That's



**Jonathan Swift's Modest Proposal** for controlling the population.) They've been found all over the world, including Plano! The City was once covered under ~800'



of ocean. As the mid-Atlantic rift grew, separating South America from Africa, the sea floor rose, causing a rise in sea level and swamping low-lying areas of the Earth. So monasaurs roamed above what would become Plano!

Indeed, one was found on the campus of *Plano West High School* by a student, **Liz Arroyos**, and excavated by **Wes Kirpach's** Biology class in 2009. The monasaur fossil skull was carefully wrapped in a plaster cast and taken to the lab for study. As far as Louis is aware, "no other school has its own dig."

Other fossils have been found on campus before and since. Fossil fish and ammonites (like nautilus) are part of their collection. And studies have shown these early Plano denizens are identical to those found in Angola and elsewhere. That makes sense; whereas land animals evolved separately once the primordial continent separated into seven, the sea-going creatures were free to roam the world. The cliffs of the Western Africa shoreline hold a vertical record of life and climate. A video (sans sound, since Prof. Jacobs hadn't warned us he needed it; we'll have to ask in future) showed digs in the sandstone cliffs to pry loose the history of the Earth, studying the past so that we're not a prisoner of it. Brushing away the dust, it showed that, on occasion, you can dig fossils up with a paintbrush, but some are so large, you must haul them out with a truck.



Louis narrated when the audio failed. He told us that you must take great care with pterosaur (fossil dragon) bones as they were



delicate for a reason: if it weren't so, they couldn't fly. He recommended that we view the video on YouTube.

[https://www.youtube.com/watch?v=7\\_26OCmMGwU](https://www.youtube.com/watch?v=7_26OCmMGwU)  
Find by searching for "paleoangola"



Plano West's monasaur is a "source of pride for the students," the school, and the community. Entering fundraising mode, Louis reasoned that, as part of the community, we might be interested in funding the model of the remaining skeleton. "Just throwin' that out, knowing what generous" folk we are.

**Jamie Schell** asked how much it would take and was told "not a huge amount, perhaps a few thousand."

**Mark Geller** was confused: "where did the water come from" that flooded Plano? Louis told him that there was no change in the volume of the oceans (outside of Ice Ages and their non-polar opposites); the ocean basins changed shape and held less water, so it

spilled out onto the land. (Ice Ages are responsible for the migration of Man from Siberia to North America. Tied up in massive, numerous glaciers, the oceanic waters retreated, leaving land bridges between the continents. Inuit crossed what is now the Bering Strait.)

To a question from **Janis Allman**, Louis responded that local creek beds are a rich source of fossils: huge oysters, fish, and ammonites lie in our Austin Chalk and, indeed, in any sedimentary rock.

Louis said that our desk organizer was just "what I need" when **King David** gifted it to him. Jamie said that he found a shark's tooth near Lake Lavon that was dated by SMU to 20-50MYA. **David** led us in the Four-Way Test and released our attention at 1:00.



## Plano Rotary Club Board of Directors 2016-2017

### President

David McWhorter

### President Elect

Rick Horne

### Secretary

John Caldwell

### Treasurer

Jim Cooper

### Past President

Kelly Palmer

### Sergeant at Arms

Jason Kramer

### Membership Chair

Howard Matson

### Public Relations Chair

Carrolyn Moebius

### R.I. Foundation Chair

Jamie Schell

### At Large

Sara Akers (2 Year term)

Mike Jobe (2 Year term)

Mike Robnett (1 Year term)

Justin Roche (1 Year term)

Maria Mott (1 Year term)

Larry Bisno (2 Year term)

### Business Secretary

Karen Sheldon

### Bulletin Editor

Dr. Chris Parr

### Bulletin Photographer

Robert Epstein

### Bulletin Designer

Brenda Irigoyen

Alphagraphics

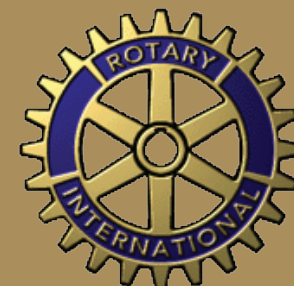
### Printing by Alphagraphics

Thank you Kenny Wilson

### The Plano Rotary Club

P.O. Box 864316

Plano, TX 75086



## Guests & Visiting Rotarians

### Guest

Candace Fountalakas

John Timm

Ros Shamshiri

### Visting Rotarian

None

### Guest of

Janis Allman

Chris Parr

John Caldwell

### Home Club

## Proposed Members

### New Member:

Ross Shamshiri

### Proposed by:

John Caldwell

### Classification:

Small Business Accounting

# Support Our Advertisers



## ACE FENCE-DFW

Pam Little

(972) 578-5775  
Fax (972) 578-1005

"a fence to you,  
a reputation to us."

pam@acefences.com  
1400 Capital Ave.  
Plano, TX 75074



David Allison

1214 Avenue K  
Plano, TX 75074

972-423-0434  
www.allisons.com



increase your reach

**KENNY WILSON**  
OWNER

**Plano**  
Phone: 972.867.9216  
us408@alphagraphics.com

**Richardson**  
Phone: 972.234.3033  
Fax: 972.231.6968  
us103@alphagraphics.com



**Casey W. Stewart**  
Regional Market President

972.309.0001 ext. 5937  
214.863.5937 direct  
214.863.6160 fax  
caseystewart@anbtx.com

**Plano Bank Center**  
1101 E. Plano Parkway, Suite E  
Plano, TX 75074

**Allen Banking Center**  
720 S. Greenville  
Allen, TX 75002  
www.anbtx.com



Professional Automotive Repairs including:  
Air Conditioning • Inspections • Clutches • Transmissions • Differentials  
Engine repairs • Factory Scheduled Maintenance • Tune-Ups • Electrical • Brakes



**Jerry P. Kezhaya**  
President

www.TheAutoShop.com

2560 East Plano Parkway  
Plano, Texas 75074



972-578-0588 - T  
972-881-0998 - F



www.huffines.net

**HUFFINES**  
CHEVROLET

1001 Coit Rd @ Plano Pkwy  
Plano

(972) 867-4000

**PLANO**  
**HUFFINES**  
HYUNDAI

909 Coit Rd @ Plano Pkwy  
Plano

(972) 867-5000

**HUFFINES**  
CHRYSLER Jeep  
DODGE RAM

4500 W. Plano Pkwy @ Ohio  
Plano

(972) 867-6000

All Service, Body and Parts Departments Open All Day Saturday

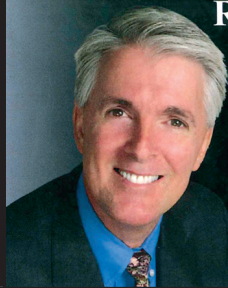
## J. Marc Lewis & Associates

CORPORATE AND PERSONAL TAXATION

J. Marc Lewis JD, LL.M., EA  
Enrolled to practice before the IRS

Lakeside Commons  
5045 Lonmar Drive  
Suite 280  
Plano, TX 75093

marclinc@airmail.net  
Tel. (972) 618-8224  
Fax (972) 618-2021



**RICARDO KASMISKIE**  
Realtor®

Office: (972) 732-6000  
Fax: (972) 732-6003  
eFax: (972) 468-7547  
Mobile: (972) 743-5324  
ricardokasmiskie@kw.com  
www.theonestotrue.com



18383 Preston Road, Suite 150  
Dallas, TX 75252

Each Office Independently Owned and Operated



SIGNS & GRAPHICS NATIONWIDE

**Maria Mott**

Owner  
(O) 972-612-6220  
(C) 214-454-6780  
mmott@signsbytomorrow.com

1101 OHIO DRIVE  
SUITE 117  
PLANO, TX 75093  
FAX 972-985-7822  
signsbytomorrow.com/plano  
plano@signsbytomorrow.com



**ROY L. REEVES**  
Attorney

Ph. 972-596-4000  
Fx. 972-755-8726

**REEVES LAW FIRM, P.C.**  
Adoption, Child Custody & Divorce

1400 Gables Court  
Plano, TX 75075

Roy@reevespc.com  
www.reevespc.com