

EVERY
 ROTARIAN
 EVERY
 YEAR

Rotary  **Richardson
 Rotary Club**

District 5810 Bulletin Excellence Award, 2019-2020



(972) 725-7150 ext. 802

Online Meetings @ Noon Monday

info@richardsonrotary.com

**2020 – 2021
 BOARD & COMMITTEE
 LEADERS**

President

Barry Young

President-Elect

Phil Nelson

Secretary

Steve Hendry

Treasurer

Daniel Robb

Sergeant-at-Arms

Jim Rodriguez

**Immediate
 Past President**

Ginger Mayo

Blood Drive

Greg Moore

Care

Open

Club Service

Becky Poynter

Community Service

Open

International Service

Bill Elhorr

Leads

Open

Membership

Mark Koellner

New Generations

Michelynne McNeeley

Polio Plus

J.D. Grimm

Program Chair

Jim Waldorf

Public Relations

Liz Morse

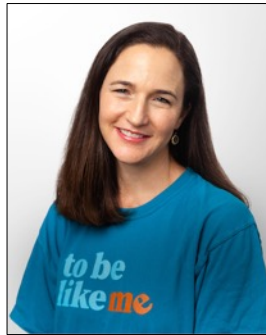
RI Foundation

Radi Al-Rashed

Bulletin

Editor/Publisher

Greg Moore



November 16, 2020

TODAY'S PROGRAM

Hollis Owens
Founder/Executive Director

To Be Like Me

Hollis Owens graduated with a B.S. in Neuroscience from Washington and Lee University in Virginia and went on to get her Masters in Physical Therapy from UT Southwestern Medical Center in Dallas in 2000. She has worked primarily in the area of pediatrics for the past 20 years including experience in clinical research, inpatient, outpatient, home health, and school-based physical therapy.

Hollis is currently the Founder and Executive Director of a new disability awareness program and nonprofit, **To Be Like Me** (www.tobelikeme.org). Hollis is a lover of connecting people, finding gifts/talents in those she meets, and helping people find tools for success both in the classroom and out in the community.

She has four daughters who also keep her busy with their own passions and a husband who supports and encourages her entrepreneurial spirit! Hollis is currently a member of the Richardson East Rotary Club. Her late grandfather, Hollis Harold Leddy, was a member of the San Angelo Rotary Club for many years. She joined the Richardson East Rotary Club after serving on the committee for the Ann Eisemann Inclusive Playground.

WEEKLY PROGRAMS ARE ONLINE UNTIL FURTHER NOTICE

Nov 23	No Meeting - Thanksgiving
Nov 30	No Meeting - 5th Monday - Social Activity TBA
Dec 07	City of Richardson Employee and Supervisor of the Year Awards

UPCOMING BIRTHDAYS AND ANNIVERSARIES

Arzell Ball – November 18 • Harry Smith – November 20
 Chuck Eisemann – November 24 • Steve Hendry – November 26
 Brent Tourangeau – December 01

☆☆☆☆☆☆☆☆☆☆☆☆☆☆☆☆☆☆☆☆☆☆☆☆☆☆☆☆☆☆

Jeff and Wendy Griffin – November 19, 2005
 Craig and Susan Jeffery – November 24, 1979
 Frank and Gerry Leftwich – November 28, 1959

NOTE: Click **here** to automatically connect to our Zoom meeting at Noon
 –or– Meeting ID is 851 6421 9100; Passcode is 327548

Richardson Flags

Sign up year-round. Subscriptions continue for a full calendar year and flags will be placed on each of the next five deployments. No matter when you sign up, you will receive five flag deployments. All for \$40/year!

The Richardson Rotary Club operates its Flag Program with the support of local Girl Scouts and Boy Scouts who share in the revenue. Net proceeds benefit various club-supported programs and charities.

<http://www.richardsonflags.org/>

or call

(972) 725-7150 ext. 803



2020 ROTARY/EDGE AWARDS



Behind those masks are this year's EDGE Award recipients, presented by Barry Young, Club President:
Cindy Shafer - Unsung Hero Award, and **Radi Al-Rashed - Ethics Award**.
 Congratulations!

RHS INTERACT CLUB



For more information, contact
 Michelyne McNeeley
mmcneeley@pixlproduction.com
 214-287-6007

RICHARDSON ROTARY FOUNDATION



For more information or
 to donate, contact
 Dr. Arnie Stokol
drstokol@stokolvision.com

UTD ROTARACT CLUB



For more information, contact
 Dr. Gene Fitch
gene.fitch@utdallas.edu

RICHARDSON ROTARY CURRENTLY SUPPORTS THESE ORGANIZATIONS



<p>Bonds Benefit Company Specializing in Group Medical</p>  <p>Carl G. Bonds, CLU, ChFC Certified Benefits Consultant</p> <p>214 334-1183 E-mail: cbonds@flash.net</p>	 <p>International Chem-Crete Group Manufacturer of Construction Chemical Products 800 Security Row Richardson, Texas 75081 800-480-0878 www.chem-crete.com</p>
 <p>KRISTINA A. KIIK 2500 Springwood Lane Richardson, Texas 75082 (214) 403-7240 kristina@kiik-law.com www.kiik-law.com</p>	 <p>The Doty Consulting Group <i>Foundation Inspections</i> Jimmy A. Doty, P.E. Principal 469-600-9237 jimmy@dotyconsulting.net www.dotyconsulting.net <small>TBPE Firm #F-10627</small></p>
 <p>alphagraphics 972.234.3033 1750 Alma Rd., Ste 118 Richardson, TX 75081 us103@alphagraphics.com</p> <p>GET NOTICED. GET BUSINESS.</p>	 <p>Michelle Norman Property Manager 3341 W. Campbell Rd. Garland, TX 75044 Phone 972.505.3838 garlandcampbell@advantagestorage.net www.advantagestorage.net</p>
 <p>TEXAS REPUBLIC BANK Est. 1891</p>  <p>Kelly McBrayer Senior Vice President 972-685-2044 NMLS#1157446</p> <p><i>For all your Lending needs from Mortgage Loans to Commercial Loans</i></p> <p>690 W. Campbell Road, Suite 100 Richardson, TX 75080 (Floyd & Campbell, Next to U.T.D.) www.texasrepublicbank.com</p> 	
<p>SPECIAL THANKS TO OUR BULLETIN SPONSORS WHO ARE CONTINUING THEIR SUPPORT THROUGHOUT THE COVID-19 PANDEMIC.</p>	