



Elizabeth Wickert <rotaryliz@gmail.com>

eBulletin - Nov 09, 2012

1 message

Rotary Club of Summit County (#1186) <mailservice@clubrunner.ca>
 Reply-To: "Rotary Club of Summit County (#1186)" <raftin57@msn.com>
 To: rotaryliz@gmail.com



Service Above Self

Rotary Club of Summit County (#1186)

eBulletin

Friday, November 09, 2012



Hello Elizabeth! This email has been generated just for you as a member of our club. We hope you en newsletter!

<p>Editor: Kathryn Davis If you have any comments or questions, email the editor.</p>	<p>President's Message <i>by Ellis, Joni</i></p> <p>Last night on the news I heard a man reply to the news anchor, I didn't die during 911 (he was a responder), I didn't die in Bagdadh (he was a soldier), I < em>would not die in front of my own l who rescued his family seconds before being caught in Hurricane Sandy's storm surge on his own sent this past week, to give those who would like to contribute to the Hurricane Sandy Relief Effo contribute to those many people suffering. Please read on (and scroll down) to learn more about natural disaster. I encourage you to find a way to say yes and help our fellow Americans. Rotar our pitching in.</p>
<p>Future Speakers</p> <p>Nov 13 2012 Leigh Girvin - Breckenridge, CO <i>"Continental Divide Land Trust"</i></p> <p>Nov 20 2012 Bee Jeanson <i>"Professional Excellence Awards for Summit County"</i></p> <p>Nov 27 2012 Bob Vanourek - Edwards, CO <i>"Building Excellent, Ethical, & Enduring Organizations"</i></p> <p>Dec 4 2012 Katherine Sanguinetti <i>"Colorado Department of Corrections"</i></p> <p>Dec 11 2012 Club Leadership <i>"Summit County Rotary Charitable Fund + The Rotary Foundation"</i></p>	<p>This Monday is Veterans Day. We will honor the men and women who have, or are serving our c Wickert are currently enjoying family in the UK, but I'm sure Liz would appreciate an email expre the great work that her committee does year long in tribute to our troops. Contact Liz if you or s would like to help our Troop Support Committee. rotaryliz@gmail.com</p> <p>Every week I am amazed at the energy of our Club Members. Don Parsons and Kathy Davis are l gather volunteers for their Holiday Bell Ringing campaign. Thanks to Steve Cornwell many of yo local 3rd grade classrooms delivering dictionaries. Every week Kathy investigates ways to impro (keep reading!). Peggy never stops thinking about new members. Rob Phipps is working to hav available by the holidays (contact Rob to help on the committee). Wendy is gathering turkeys. keeps us on track with record keeping. Mike Regall, Kyle McElhattan and Mac Trench arrived by couldn't set up the last couple of Tuesday mornings. John Pfarr, Larry Stone, and Stephanie Katz weekend. Darcy Rehn is working with the high school on a Career Day this spring - a great oppo youth. Heidi choreographed our Flash Mob and posted it on U-Tube. Be sure to stay after the m Tuesday for our first practice!</p> <p>Can't find something to do? Talk to one of these Rotarians. I can't begin to name everyone each It's continual. It's pleasantly addictive. We impact our mountain community in so many positive wear our <i>Rotarian and Work</i> vests for your community projects. We want Summit County to kno</p> <p>Whenever I need something, you say yes. Thank you Summit County Rotarians. You are the ve</p>
<p>Upcoming Events</p> <p>RLI (Rotary Leadership Institute) Nov 10 2012</p> <p>Club Board of Directors Meeting Nov 13 2012</p> <p>Rotary Happy Hour Nov 14 2012</p> <p>Club Board of Directors Meeting Dec 11 2012</p> <p>Holiday Party Dec 12 2012</p>	<p>Summit County Rotarians Call to Action <i>by Davis, Kathryn</i></p> <p>If you are interested in donating to the relief effort as part of Rotary District 54 easy as 1-2-3</p> <ol style="list-style-type: none"> 1. Make your donation payable to Summit County Rotary Charitable Founda 2. Specify "Sandy Relief" in the Memo area 3. Mail your check to: PO Box 4401, Frisco 80443 OR Bring your check to ou Tuesday, November 8th

RLI (Rotary Leadership Institute)

Jan 26 2013

RLI (Rotary Leadership Institute)

Mar 9 2013

2013 Rotary District 5450 Conference

Apr 26 2013 - Apr 28 2013

This eBulletin has been generated by **ClubRunner** club communication software. Visit clubrunner.ca for details.

© 2002- 12 Doxess. All Rights Reserved.

Funds will be aggregated (no administrative reductions whatsoever) and sent to a Rot to afford relief in New Jersey, New York, and other hard hit areas.

Thank you Summit Rotarians!



Anatomy of a SuperStorm

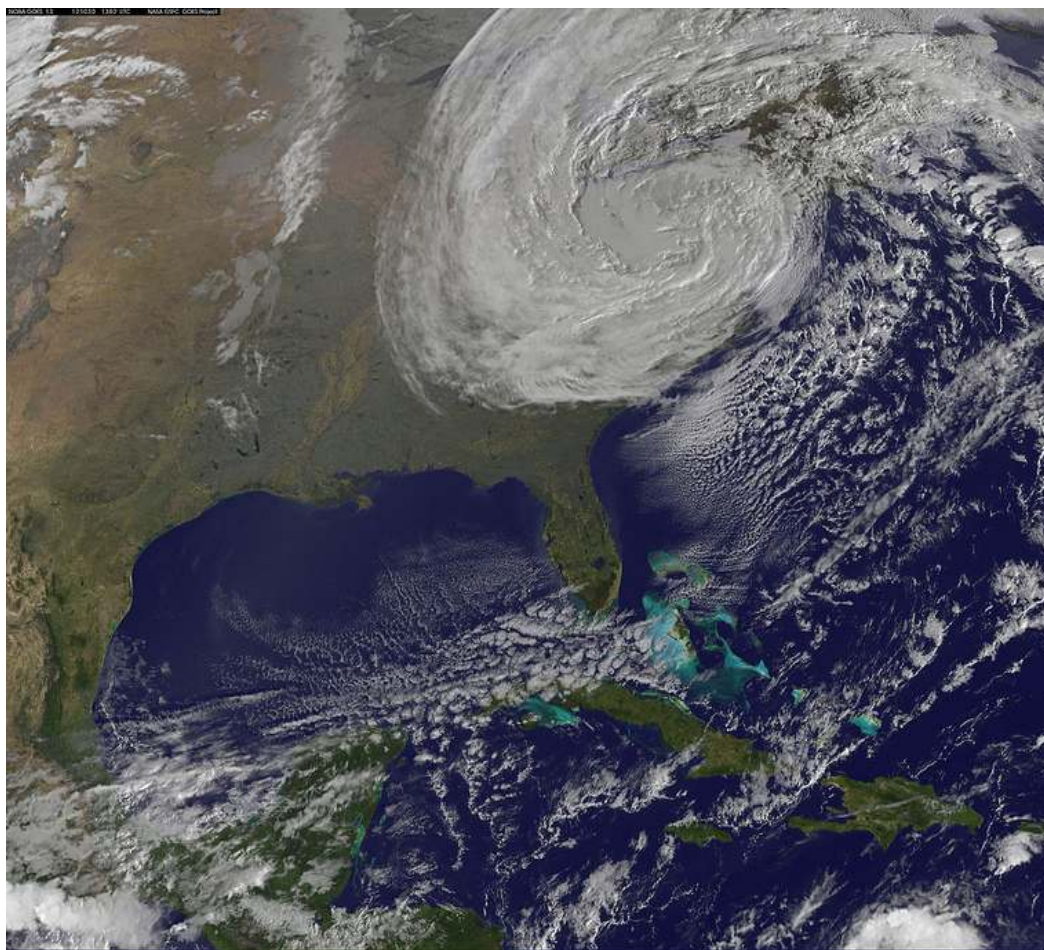
by Davis, Kathryn

Hurricane Sandy made landfall in the United States about 8 p.m. EDT Oct. 29, striking near Atlantic winds of 80 mph. A full moon made high tides 20 percent higher than normal and amplified Sandy's effects. Homes were flooded, trees and power lines knocked down and the city's famed boardwalk was ripped apart. In Queens, people were left stranded in their homes and waited for rescue teams in boats to rescue them. Several homes were destroyed in one fire in Queens. Several other fires were started throughout the New York City area.

Seawater surged over Lower Manhattan's seawalls and highways and into low-lying streets. The tunnels, subway stations and the electrical system that powers Wall Street and sent hospital patients scrambling for safety. Skyscrapers swayed and creaked in winds that partially toppled a crane 74 stories tall. A large tanker ship ran aground on the city's Staten Island.

As of Nov. 1, about 4.7 million people in 15 states were without electricity, down from nearly 8.5 million on Oct. 30. Subway tunnels in Lower Manhattan remained flooded, but some lines had resumed service. Airlines canceled more than 15,000 flights around the world, were returning to normal schedules. Most gas stations in New Jersey were closed because of power shortages and depleted fuel supplies. Long lines formed at open stations. Power was expected to open.

Sandy will end up causing about \$20 billion in property damage and \$10 billion to \$30 billion more in economic damage, making it one of the costliest natural disasters on record in the United States, according to IHS GlobalVantage forecasting firm.



Tim Sharp, LiveScience Reference Editor

One Rotary's Response

by Davis, Kathryn

This story is about the response that the Rotary Club in Murray Kentucky made immediately after Hurricane Sandy hit the East Coast. Go Rotary!

The Murray Rotary Club has started this area's first relief effort for victims of Hurricane Sandy with "Relief."

The local civic club unanimously endorsed the aid effort at their Thursday meeting and the push to get a relief trailer will start at 1 p.m. Sunday at Pagliai's Restaurant. This truckload of items will be destined for a community about 10 miles inland from the hard hit coast. The relief effort has quickly grown into a partnership with Paducah and other area clubs.

The PTL trailer will also be open in Murray on Monday and Tuesday from 9 a.m. to 5 p.m. before Wednesday to receive additional donations from 9 a.m. to 5 p.m. Paducah donations should meet at Carson Center Parking Lot C.

"Rotarians Keith Travis and Kenny Darnell brought the idea to the club and everyone is on board right away," said local Rotary President Tab Brockman. "Our fellow Rotarians in Paducah and other area clubs are joining in this effort to make it a true regional effort to supply the basic relief items so desperately needed."

Starting at 1 p.m. Sunday, the following items will be accepted: Donations of cash to cover transportation, a generator (about \$1,200), winter clothes, non-perishable food items, blankets, tarps or plastic rolls, tools, work gloves, generators, chain saws and hand tools.

"We've talked to Rotarians in hard-hit Freeport, New York, and their club will have a staging area to receive and distribute our materials and any other donations," said Travis, who is also serving as the Murray coordinator. "You just can't imagine the devastation that's been described to us."

"Their town has been destroyed and they are without food, shelter or basic necessities," Travis at Freeport is repeated all up and down the northeast but we were able to make contact with Rotar and get this effort together. There as so many more communities in this same situation, but we l If local response results in the need to fill more trucks our area Rotarians will do our best to mak

Birthdays

by Davis, Kathryn

Please wish the following members a VERY HAPPY BIRTHDAY!

Dale Lervick November 6

Bill Pelham November 12th

Club Anniversaries

by Davis, Kathryn

Happy Club Anniversary!

Heidi Pace 1 Year

Corporate Sponsors

by Davis, Kathryn



The Rotary Club of Summit County Corporate Pa

Elizabeth's Commitments