

JOHN MONASH - From Melbourne to Gallipoli

3pm on Sunday, May 17, 2015
in the Ian Roach Hall, Scotch College,
1 Morrison St, Hawthorn, VIC 3122

A new cantata for choir, children's choir, soloists and orchestra by David Kram and Kevin O'Flaherty

Featuring

Lisa-Anne Robinson

soprano



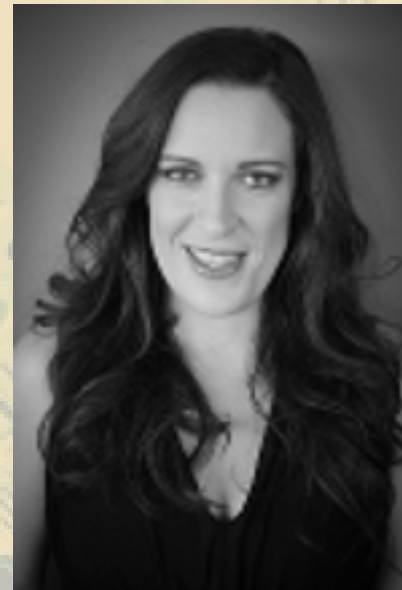
James Penn

tenor



Selena Pettifer

contralto



Tiriki Onus

bass



Photo by James Henry

Tickets
Adult \$30
Concession \$25

Choirs & Orchestra
THECHO!R

Melbourne Chamber Choir

Malvern Primary School

Port Melbourne Primary School

Scotch College Symphony Orchestra

Bookings www.trybooking.com/GUOI

Contact 0407 552 049

a-hennel@netspace.net.au