



# The Serving Tray

Rotary Club of Kirksville -- Charter 371 -- District 6040

[www.kvrotary.org](http://www.kvrotary.org)



October 7  
2020

Vol. 71

**WHAT ROTARY MEANS TO US?** After showing an amusing video on Rotary, President Roy asked us present at the meeting and on Zoom what our Rotary club means to them. Many members responded.

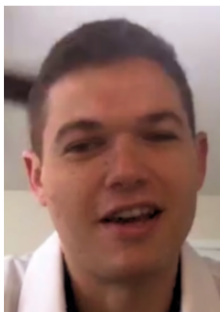
**ATSU ROTARACT:** David Nichols introduced ATSU Rotaract Advisor Melissa Stuart who has a very impressive background. Melissa, in turn, introduced the ATSU Rotaract panel today (see photos and titles below). She asked each to tell us where they are from and what made you want to be a physician and where they want to be 10 years from now. Later she asked how the COVID-19 pandemic has impacted their education and how it will affect them in the future.

**Nathan May**, a University of Missouri undergraduate from Kansas City, wanted to help others. In ten years he hopes to be in the surgical field. **Griffin Durupt**, a University of Utah (SLC) undergraduate from Boise, Idaho In ten years, he would like to serve individuals in underserved areas. **Whitt Davis**, from Declo, Idaho, first had an interest in veterinary medicine but then decided he'd rather work with people. He's not sure where he will be in ten years but he wants to help people. **Neil Makwana**, a Loyola University undergraduate from Northwest Chicago, is also very interested in helping people. In ten years, he would like to be a pain management specialist. **Erin Burdt**, a University of Iowa undergraduate from Ankeny, Iowa, was first interested in veterinary medicine before she was able to help sex traffic victims and changed to the human side in her junior year. In ten years, she would like to be involved in emergency medicine with an emphasis in psychiatric care or OB/GYN and then go into rehab of sexual abuse victims.

Each member of the panel said COVID-19 has been challenging for them but they have learned to adapt to online education. They miss the hands-on aspects of their education which will help them in rotations and residency. Erin said she hopes fear of hospital settings doesn't impact cancer care. They expect telemedicine to be more important in the future to reach people in underserved communities.



Nathan May  
President



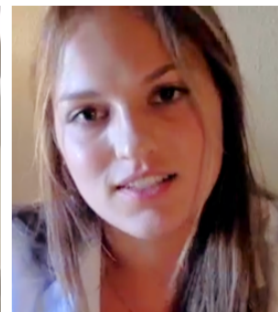
Griffin Durupt  
Vice President



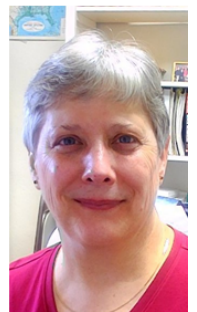
Whitt Davis  
Secretary



Neil Makwana  
Treasurer



Erin Burdt  
Event Coordinator



Melissa Stuart  
Faculty Advisor

**50-50 Drawing:** John Davis did not pull the ace of spades; pot now up to \$1,823.

## Guests:

Mark Czanderna  
Chris Tharp

Via Zoom: Nathan May, Griffin Durupt, Whitt Davis,  
Neil Makwana and Erin Burdt (ATSU Rotaract)

## Upcoming Programs:

**Oct. 14:** Teresa Ross -Buddy Pack/Food Bank

**Oct. 21:** Polio Plus

**Oct. 25:** Duck Dash, Virtual

**Oct. 28:** Cardiologist Larry Handlin

**Nov. 4:** Club Assembly

OCTOBER: BASIC EDUCATION AND LITERACY MONTH