

Landmark by the Rivers



The La Crosse Plow Company Building

Early La Crosse

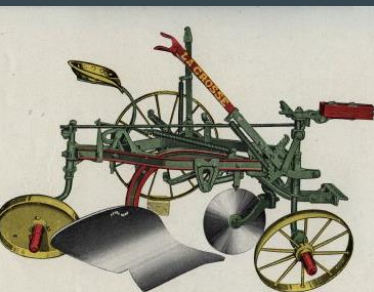




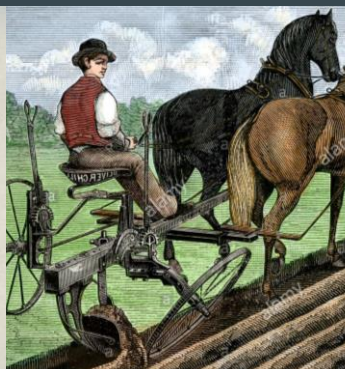
Albert Hirshheimer



Happy Farmer Tractors



LA CROSSE SULKY PLOW
Foot Lift—Single Ball—One Piece Frame



THE ORANGE JUDD FARMER

19 (539)

La Crosse Happy Farmer TRACTOR

*The La Crosse
Tractor Means
a Happy Farmer*

As you stand beside the La Crosse Tractor, every working part of it is right under your hands where you can reach it easily. Step into the driver's seat—and you are ready to do any power farming job as simply as you would run your automobile. There are no difficult adjustments to make—no out-of-the-way places to get at. From where you sit you can operate the implements as well as the tractor single-handed.

You need a tractor for the amount of work it will do **quickly**. Because of its simplicity, the La Crosse is the tractor you can depend on to do the work you want in good time and without delays. It is as simple as it is powerful.

The Simple Three Plow Tractor

The simplicity of the La Crosse Tractor is the result of the experience and genius of the men who designed it. From the entire automobile, tractor, vehicle and farm implement field, the highest type of men have been chosen for La Crosse engineers. When you buy a La Crosse Tractor, you secure the finished product of the best brains in the tractor world.

The La Crosse is the successful three plow kerosene burning tractor. Its simple twin cylinder engine with the six inch bore and seven inch stroke delivers most power per gallon of fuel.

The La Crosse is the tractor which is easy to handle. It turns within a space of 9 feet and is self-guiding in the furrow.

La Crosse Tractor Implements

Like the La Crosse Tractor, La Crosse Implements are designed and built to do their work most economically and easily. All of them can be handled by the use of a rope from the driver's seat on the tractor.

Ask your dealer to show you La Crosse Tractor Plows—both moldboard and disk—the La Crosse special Tractor Disk Harrow and the La Crosse Automatic power-lift and power-pressure Grain Drill.

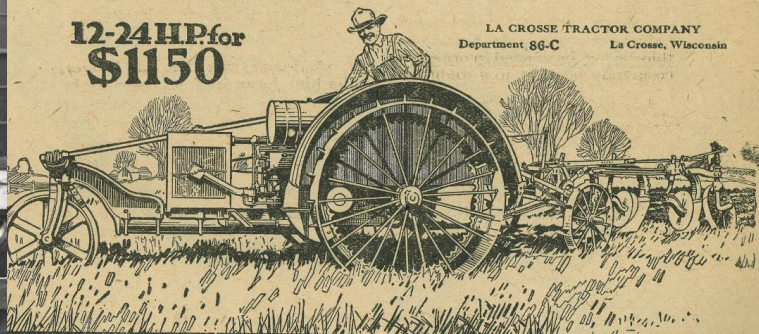
See the La Crosse Now

The La Crosse Tractor offers you 12-24 horsepower for \$1150—full three plow capacity, with guaranteed drawbar pull of 2000 pounds and 24 belt horsepower. It is famous the country over as the tractor with "most power for the money".

Now is not a bit too soon to see the La Crosse dealer near you and have him place your order for Spring delivery. Write us today for his name, as well as that of the district distributor, who will make arrangements for you to see the next outdoor demonstration.

**12-24HP for
\$1150**

LA CROSSE TRACTOR COMPANY
Department 86-C La Crosse, Wisconsin





You Never Saw a Tractor Like This

New in its Greater Usefulness . . Its Four Speeds . . Its ability to do More Work at Lower Cost.

TO the United has been given the greatest welcome ever known in tractor history. No other tractor ever won such instant success. Four speeds have given United users a new range in power.

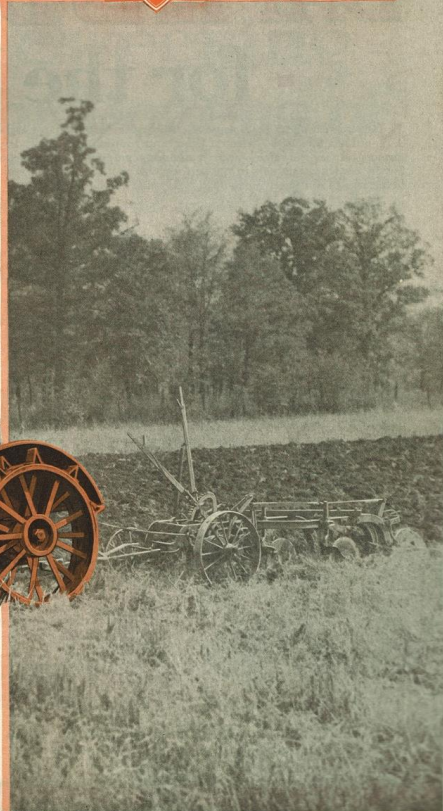
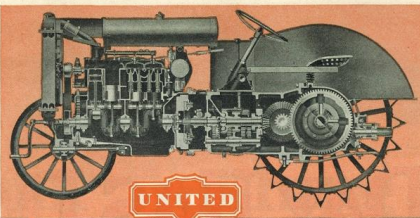
Almost any job can be done quickly with a United because of this one feature. It pulls three 14-inch plows at better than 3 miles per hour . . . though it weighs only about 4,000 lbs.

Quickly replacing the steel wheels for field work with low-cost rubber tired equipment, the United is ready to speed down the road at 20 miles per hour with a trailer. You drive it like a truck . . . shift gears while in motion . . . do things that never before were possible with a tractor.

In actual service the United is proving its mechanical excellence in a most emphatic manner. Its ease of steering is a revelation to those who never before used a United. The heat-treated, carburized gears, constantly immersed in oil, are giving long service with almost no wear. The three unit design gives strength and rigidity. And perfect traction has been secured.

With all these features the United is low in price. In fact, it offers the greatest tractor horsepower at the lowest cost. And it's guaranteed by Allis-Chalmers . . . known the world over as builders of power machinery.

ALLIS-CHALMERS MFG. CO.
Specialists in Power Machinery
Since 1881
MILWAUKEE, WIS.
Springfield, Ill. La Crosse, Wis.

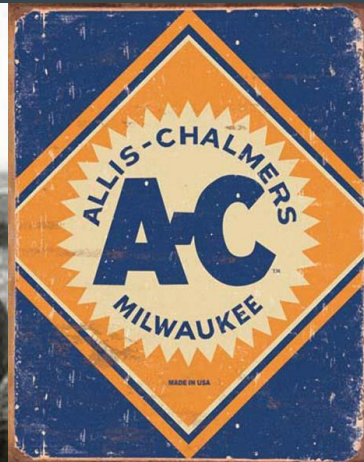


You, too, will welcome the increased usefulness of the United Tractor . . . its ability to pull implements in the field, haul loads down the road, pull graders, scrapers or scarifiers, and do belt or power take-off work. Drop us a line NOW for complete information.

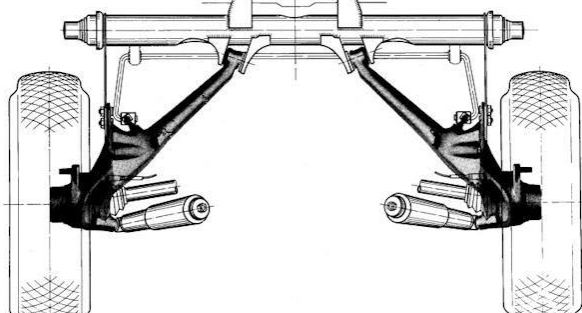


Allis-Chalmers

Allis-Chalmers



Machine Products Company (Mapco)



The Building



La Crosse Plow Company Building

525 North Second Street

La Crosse, Wisconsin

was listed on the Wisconsin State Register
of Historic Places

on November 20, 2015


Jim Draeger
State Historic Preservation Officer
Wisconsin Historical Society



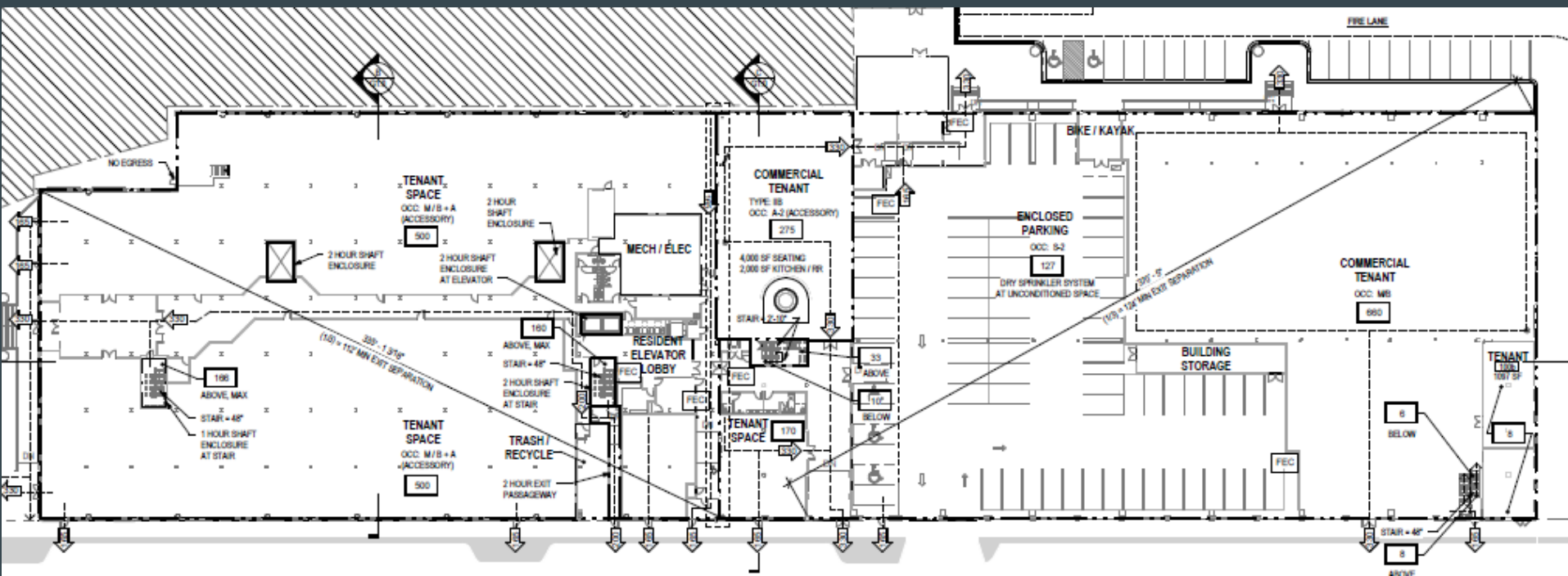


Roy & Hope Kumm



Gail, Sandy, Kris, & Russ Cleary







































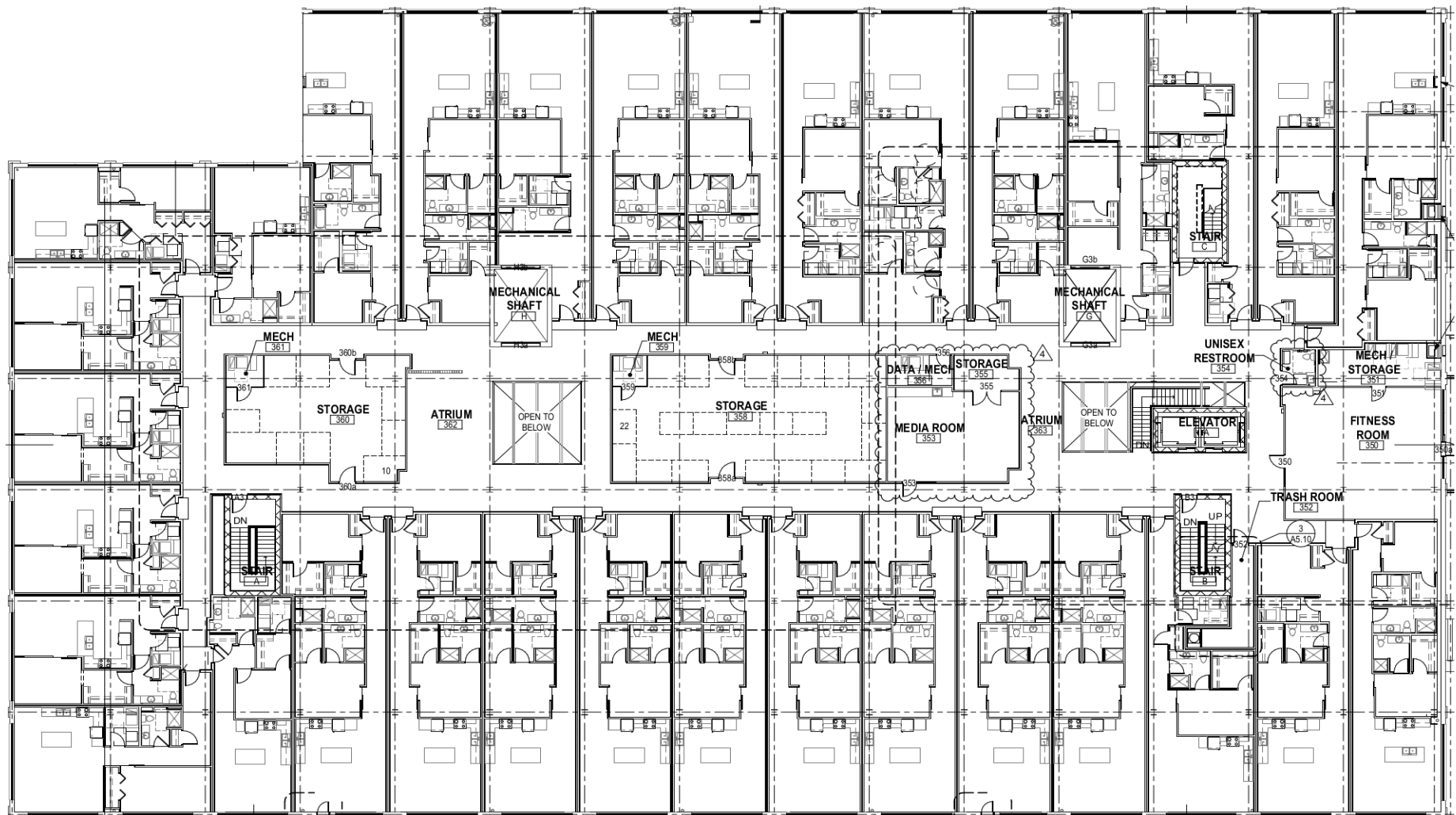








































LANDMARK
by the RIVERS

MAIL

