



Bin-it-fits of Recycling: Why sorting trash helps the planet

Beth Piggush
Integral Ecology Director



Source: NASA

Let's talk trash

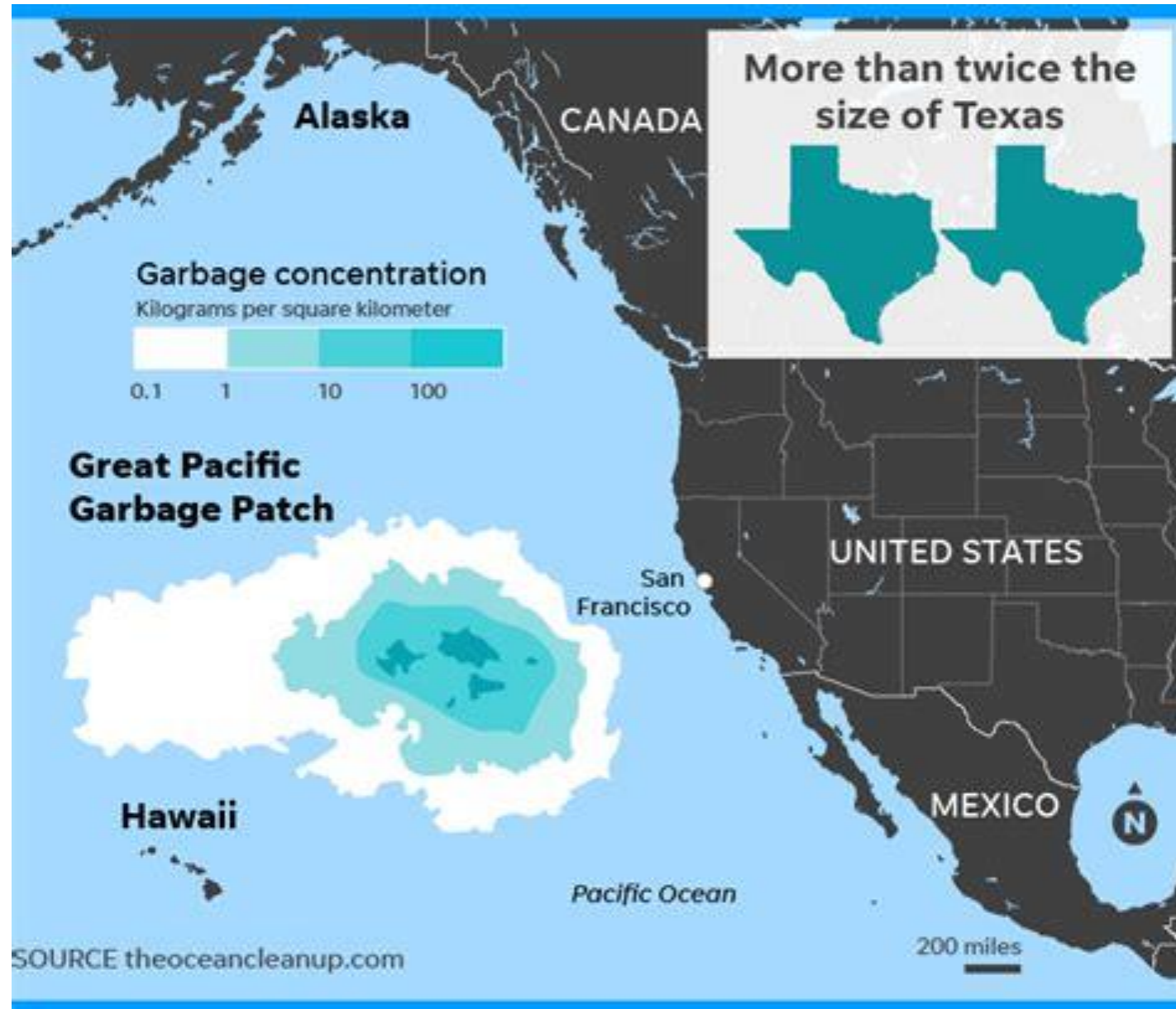
Which bin?
Recycling or Trash



What is happening globally, regionally, and locally?



GLOBAL



marine debris





The Lifecycle of Plastics



Plastic bag

20 years



Coffee cup

30 years



Plastic straw

200 years



6-pack plastic rings

400 years



Plastic water bottle

450 years



Coffee pod

500 years



Plastic cup

450 years



Disposable diaper

500 years



Plastic toothbrush

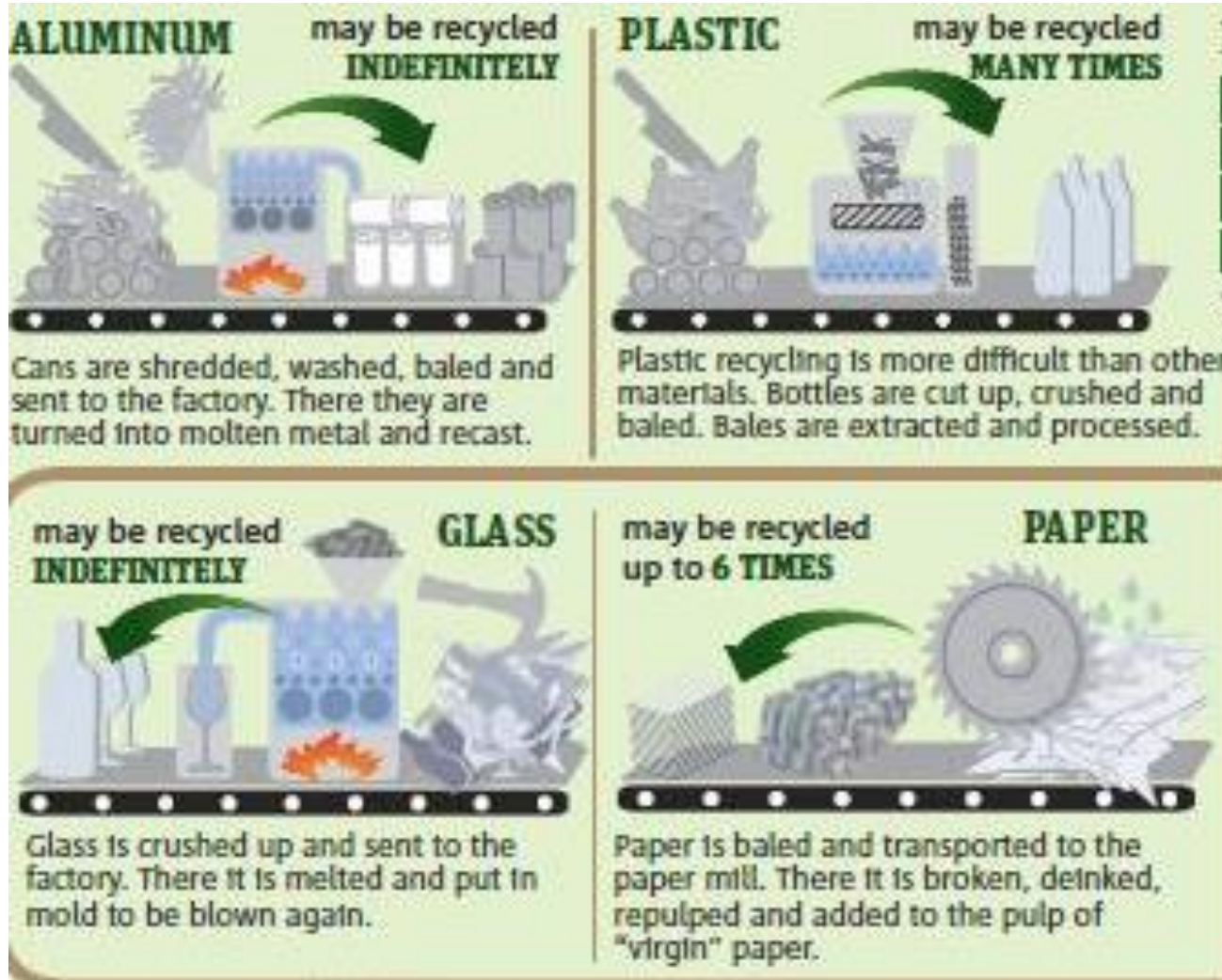
500 years

REGIONAL (USA)

- Run by private companies
- Market changes
- Business cycles
- CHINA is no longer buying our recycling and we are now stuck with it all



FUN FACTS



***The energy used to produce all the plastic bags that a typical household goes through in a year is enough to light that same house for 6 full months**

Regional/Local Connections

Marine debris numbers from Midway Atoll National Wildlife Refuge, 2016.

The Mississippi River watershed (from MN to LA) is the likely one of the largest sources of oceanic plastic debris.



LOCAL

- Many businesses are under contract with specific companies like Waste Management (WM)
- Each municipality is different
 - Harter's: City of La Crosse and City of Onalaska recycle plastics #1,#2,#4,#5
 - Hilltoppers: Town of Onalaska, Holmen, West Salem, La Crescent (and more) recycle plastics #1 and #2 only
- La Crosse County, Vernon County, Houston County (MN) all have municipal disposal sites





THE 2019

Vol. 4 No. 1

January • 2019

Recycler

Important recycling information

La Crosse County | Wisconsin

www.lacrossecounty.org/solidwaste

**Please Keep
In Safe Place.
Do Not Discard.**

INSIDE

Trash/Recycling
Information

How to Prepare Materials
for Recycling

Landfill Hours of Operation

Landfill and Citizen's Drop-Off Area Hours:

Summer Hours (April – October)

Monday – Friday: 6:30 AM – 4:30 PM
1st and 3rd Saturdays: 9:00 AM – Noon

Winter Hours (November – March)

Monday – Friday: 8:00 AM – 4:00 PM

Landfill Fees*

These fees apply to garbage (normal household waste), large items (furniture, toys, bikes, grills, stoves, washers, dryers, and small appliances) and demolition/construction (wood, drywall, doors, flooring, windows, sinks, and roofing). Other materials such as brush, yard waste, tires, and freon containing appliances (air conditioners, dehumidifiers, and refrigerators) have different fees. See our website at www.lacrossecounty.org/solidwaste for a complete list of fees*

Garbage/Demolition/Construction waste:

LOCAL

or visit our Web site: www.lacrossecounty.org/solidwaste/hhm

Household Hazardous Materials Facility (HHM)

Use is Free for La Crosse County, Wisconsin Residential Users (Unless Otherwise Noted Below)

Acceptable Materials

- Automotive fluids (oil, gas, etc.)
- Batteries (rechargeable, lead acid, lithium)
- Cell phones and digital cameras
- Cleaning products
- Computers (desktops, laptops, tablets)
- Computer equipment (printers, scanners, fax machines, keyboards, speakers, mice, hard drives)
- Fluorescent light bulbs
- Lawn and garden chemicals (pesticides, herbicides, rodenticides, etc.)
- Mercury-containing devices (thermometers, thermostats, etc.)
- Microwaves and small Freon appliances **Fees Apply**
- Paint, stain, and varnish
- Pool chemicals
- Propane cylinders (handheld only)
- Sharp objects
- TVs and computer monitors **Fees Apply**
- Video devices (VCRs, DVD players, gaming consoles, cable receivers, etc.)

Unacceptable Materials

- Ammunition
- Black powder
- Compressed gas cylinders (other than handheld propane)
- Explosives
- Fireworks
- Radioactive materials
- Shock or heat-sensitive materials (peroxide, picric acid, etc.)

SAVE YOURSELF A TRIP!

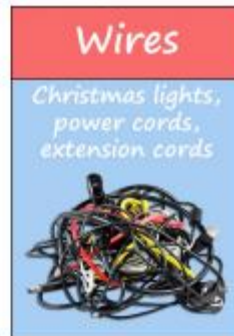
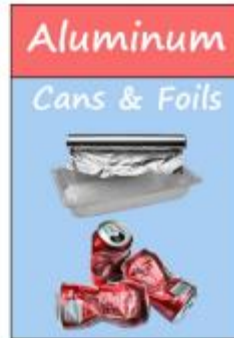
These items can and should go into your regular curbside trash or recycling:

- Empty paint and aerosol cans (recycle)
- Alkaline batteries (trash)
- Dried out paint cans (trash)
- Incandescent & LED light bulbs (trash)



Hilltoppers – Single Stream

What can you collect together?



Plastic bags are **NOT** recyclable.
Please find plastic bag drop off



3-7 plastics are **NOT** recyclable.

What does single stream recycling look like?



Can you recycling this?



YES!!!!!!

Can you recycle this?



YES!!!!!!

Can you recycle this?



YES!!!!

BUT only in La Crosse,
Onalaska and with
Waste Management
(FSPA)
#5 plastic



Can you recycle this?



NO 🙄

Can you recycle this?



NO ☹️

Only the top
half

Can you recycle ALL of this?



TRASH



Chip bags
& candy wrappers



Flexible packaging
& foil containers



Foam products
(Check Earth911.org for options)



Plastic knives & forks,
paper towels/paper plates



Coated coffee cups



Plastic bags
(Take plastic bags back to your local grocer)



RECYCLE OFTEN.
RECYCLE RIGHT.

#RORR

To Learn More Visit RecycleOftenRecycleRight.com



© 2016 WM Intellectual Property Holdings, LLC.



WHAT MORE CAN WE DO?

- REDUCE – REUSE – RECYCLE
 - Reduce your usage of single use plastics
 - Reuse plastic packaging as many times as you can
 - Recycle rather than throw away
- See litter, PICK IT UP
 - Regardless of what it is, pick it up, and properly dispose of it
- Avoid products with excessive packaging
- Bring a reusable bag for shopping or try reusable containers
- Talk trash and educate those around you
 - People can't change what they don't know about, so help spread the word.





Source: NASA