

T-G-I-F-I-Y



"Thank Goodness It's Friday in Yarmouth!"



IMAGINE ROTARY

GOVERNOR, DISTRICT 7950

David Sampson, DG.

THE ROTARY CLUB OF YARMOUTH, MASSACHUSETTS

SERVING OUR COMMUNITY AND THE WORLD FOR 30 YEARS

BOX 448, SOUTH YARMOUTH MA 02664

MEETINGS: FRIDAY, 7:00 AM, HEARTH 'N KETTLE, SO. YARMOUTH

T-G-I-F-I-Y

PUBLISHED WEEKLY BY THE ROTARY CLUB OF YARMOUTH

Vol. 33 No. 37

March 31, 2023

The Main Event

Jeff Colby, DPW Director, Town of Yarmouth - Jeff spoke to the club regarding the Town of Yarmouth Wastewater Project Update. As we prepare for town meeting, there have been some changes that we were updated on.

The lack of wastewater infrastructure has left to environmental deterioration in Yarmouth, due to a reliance on Title V septic systems that cause nitrogen pollution. Due to a 722% increase in population in Yarmouth from 1951-2010, Yarmouth's nitrogen problem has reached a critical state. Phase I is \$207 million. The average nitrogen removal required in the Bass River watershed is 59.5%, 96% in Parkers River, and 80% in Lewis Bay.

There are new MassDEP regulations and they feel that if town doesn't go down the road of wastewater on a community-wide basis such as Yarmouth, that individuals will be charged with (\$50-60K on individual residents) updating their systems if they are in one of these areas, which is 2/3 of the Town of Yarmouth.

Beyond the environmental base, there is an economic benefit as commercial entities will be able to operate in the town, which cannot be done on septic currently. There are land-use controls, 725,000 additional gallons of what's available today, are benefits of the upgraded systems. The board of selectmen will need to manage this and help us to receive the extra funding and capacity.

Plans for a centralized treatment facility on Buck Island Road is underway in development. Odor control is a significant concern, and they have taken steps to mitigate it and it is part of the design with a buffer to the residences that are existing.

All of the design funds have been appropriated and what is coming up in the town meeting in April is for construction funding approval. There is an 8 phase map and each phase is estimated to take 5 years to complete, thus a 40 year program. It is fully approved by the Massachusetts Environmental Protection. April 25, 6PM at Mattacheese Middle School, is the town meeting and everyone is welcome to attend.

NOTES:

Cape Cod Brite Lights - We are doing 53 bags each week. Each week, we are filling each bag with 16 items so we are delivering over 800 items per week. Steve's truck is bigger than George's so we only need 27,000 cans of spaghetti to fill it!

This project is for K-3 students in need at ME Small and Station Avenue Elementary Schools. For more information, visit <https://www.capecodbritelightsinc.com/>

Cleanup at Baker's Square and Town Hall - We are going to be cleaning the two islands, pruning shrubs, pickup, and weeding. Please bring gloves, tools, and favorite garden tools.

District Conference - If anyone would like to attend, the club can reimburse up to \$100 per person. Please let Steve know.

Committee Selection Sheets - Jill asked for everyone to complete the Committee Selection Sheets. Please see the email from her with the description of each of the committees. We need them ASAP!

Stuff a Cruiser Food Drive **HELP NEEDED!!!!**

April 1, 2023

9 am—1 pm

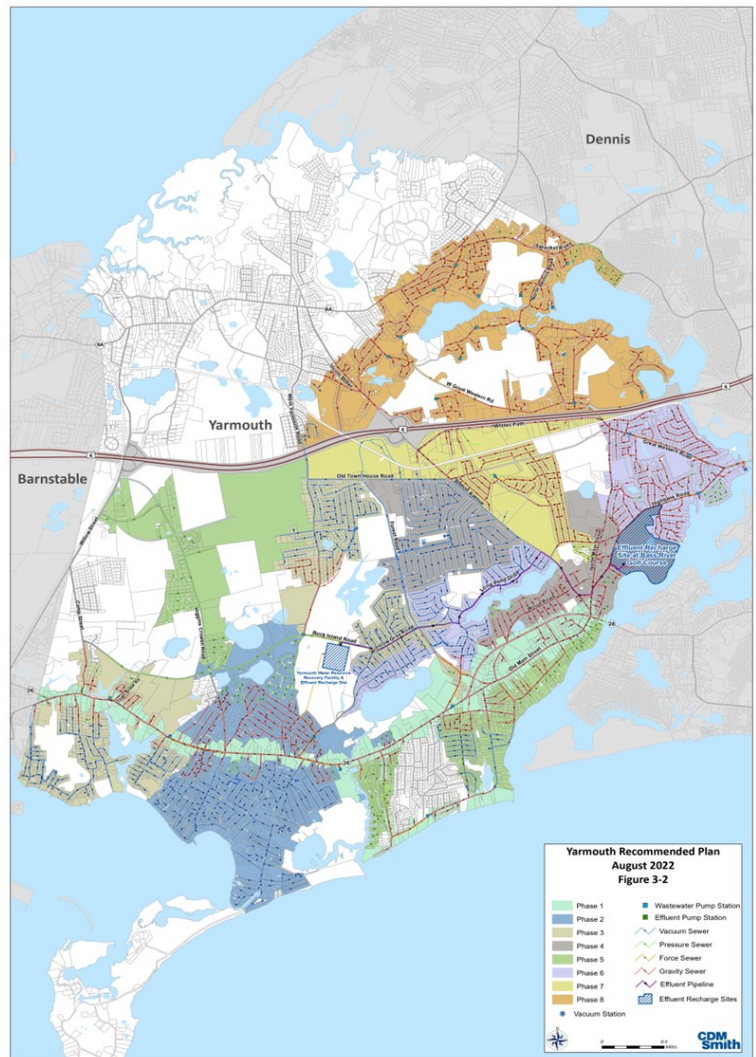
Stop & Shop (Long Pond) ; Shaws; Stop & Shop (Station Ave) Pettersons

Help Needed—See Steve Albrtigh

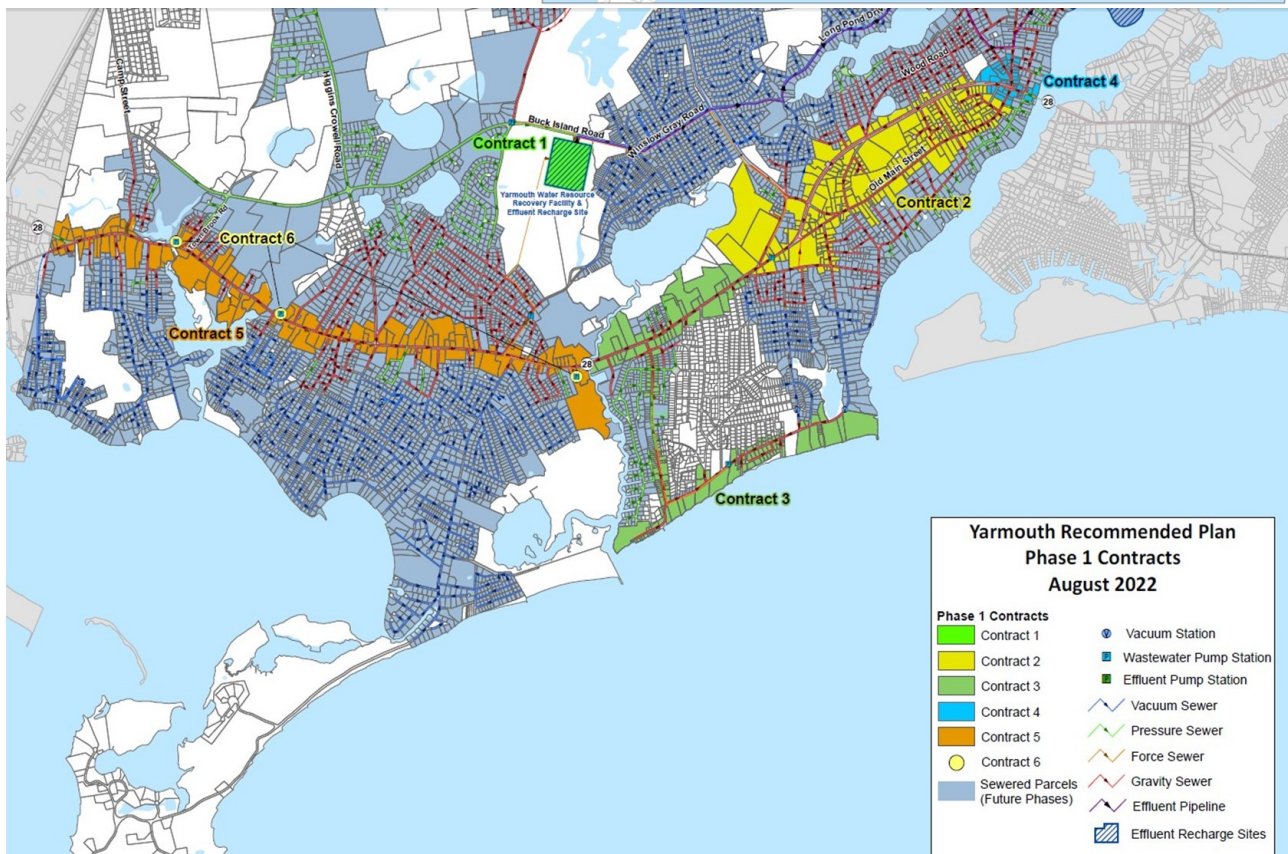


8 Phase Map

- Future Phases are Subject to Change
- Each Phase is estimated to take 5 Years



Phase 1 Map



GLOBE MAGAZINE

The Top 100 Women-Led Businesses in Massachusetts 2022

Updated October 28, 2022, 9:45 a.m.



ABBIEY LOSSING FOR THE BOSTON GLOBE

They run health care companies, universities and colleges, financial institutions, nonprofits, construction heavyweights, and more — they're the women power players of the Bay State. Meet them in the 2022 installment of this list, a joint project of [The Women's Edge](#) — formerly The Commonwealth Institute, renamed during its 25th anniversary to reflect its expanded scope and impact — and the *Globe Magazine*. Responsible for thousands of employees and billions in revenue, the women featured here drive the Massachusetts economy.

Taken together, the 100 companies on this list represent a total revenue and operating budget of \$75.9 billion. (To be precise, \$75,981,958,032.)

How the list was created: For each organization, The Women's Edge, a nonprofit that supports female business leaders, examined revenue or operating budget as well as other variables, including number of full-time employees in the state, workplace and management diversity, and innovative projects. The Women's Edge then ranked organizations according to its own formula. This is the 22nd year that The Women's Edge has created the list and the 10th year that the Globe Magazine has partnered with the group.

Rank

Company name

Massachusetts headquarters

Female leader's name

Female leader's title

Business type

1.
Dana-Farber Cancer Institute
Boston
Laurie H. Glimcher
President and CEO
Health Care
2.
Mass General Brigham
Boston
Anne Klibanski
President and CEO
Health Care
3.
Northeast Arc
Danvers
Jo Ann Simons
President and CEO
Human Services
4.
Vertex Pharmaceuticals
Boston
Reshma Kewalramani
CEO and President
Biotechnology
5.
Ropes & Gray
Boston
Julie H. Jones
Chair
Law
6.
Massachusetts General Physicians Organization
Boston
Marcela del Carmen
President
Health Care
7.
Community Care Cooperative
Boston
Christina Severin
President and CEO
Health Care
8.
Harvard Medical Faculty Physicians at Beth Israel Deaconess Medical Center
Boston
Alexa B. Kimball
CEO and President
Health Care
9.
Hebrew Rehabilitation Center
Roslindale
Mary Katherine Moscato
President
Health Care
10.
Talbots
Hingham
Lizanne Kindler
Executive Chair and CEO
Retail or Wholesale
11.
Emerson Health (formerly Emerson Hospital)
Concord
Christine Schuster
President and CEO
Health Care
12.
Wilmer Cutler Pickering Hale and Dorr
Boston
Susan W. Murley
Co-Managing Partner
Law
13.
Boston Medical Center Health System
Boston
Kate Walsh
President and CEO
Health Care
14.
John Hancock
Boston
Marianne Harrison
President and CEO
Financial Services, Insurance

15.
J.Jill
Quincy
Claire Spofford
CEO and President
Retail or Wholesale

16.
Analysis Group
Boston
Martha S. Samuelson
CEO and Chairman
Consulting

17.
Eastern Bank Foundation
Boston
Nancy Huntington Stager
President and CEO
Philanthropy

18.
Lantheus
North Billerica
Mary Anne Heino
President and CEO
Health Care

19.
Suffolk University
Boston
Marisa Kelly
President
Education

20.
University of Massachusetts Lowell
Lowell
Jacqueline Moloney
Chancellor
Education

21.
Stavros Center for Independent Living
Amherst
Angelina Ramirez
CEO
Human Services

22.
The Greater Boston Food Bank
Boston
Catherine D'Amato
President and CEO
Human Services

23.
Wellesley College
Wellesley
Paula A. Johnson
President
Education

24.
Fidelity Investments
Boston
Abigail P. Johnson
Chairman and CEO
Financial Services

25.
Simmons University
Boston
Lynn Perry Wooten
President
Education

For the complete list of 100 refer to this link: <https://www.bostonglobe.com/2022/10/28/magazine/top-100-women-led-businesses-massachusetts-2022/>

<https://www.bostonglobe.com/magazine/women-and-power-2022/?p1=Article Inline Related Link>

Committee Members:

Rufus Jones, Chantal Rice, Phil Morris, Andrea Taylor, Jackie Carnevali, Curley Carey, Paul Chatelain, Joe Potzka, Pat Armstrong & Bruce Gordon

2023 HELPING HANDS SCHEDULE

APRIL

Saturday April 8 – YPD 9/11 Memorial Spring Clean Up

Saturday April 22 – Yarmouth Annual Clean Up Day

JUNE

Saturday June 3 – Baker Square and Town Hall Garden Planting

Saturday June 17 Baker Square & Town Hall Mulching

SEPTEMBER

Saturday September 9 – YPD 9/11 Memorial Fall Cleanup

DECEMBER

Saturday December 16 – Wreaths Across America

What is a Pollinator Garden?

A pollinator garden is designed to contain plants to provide food and shelter to animals (bees, birds, butterflies, moths, wasps, bats, and small mammals) that pollinate plants that support the local ecosystem and food web. Pollinator gardens are often made up of native plants, but non-native plants pollinator gardens can still support local wildlife.

Why Pollinator Gardens Matter?

Pollinators—i.e., animals that move pollen from one flower to another—are in decline. Pollinator decline is attributed primarily to the loss of habitat and to the use of pesticides. Urbanization is occurring at an alarming rate; our green space is disappearing. Green space is often converted to land for crops, monoculture lawns, or planted with non-native plants that do not support or host local insects that carry out pollination.

With the rapid decline of bees, the widespread availability and use of pesticides, and the economics of past horticulture practices that prioritized a plant's desirability over its function, we are in a pollinator crisis. This is where pollinator gardens, and you, can help by planting a pollinator garden.

Do Pollinator Gardens Take a Lot of Work to Start?

A beautiful thing about pollinator gardens is that you can do as much or as little work on them as you want after doing a little prep work. The garden can be as small as a window box or as large as a meadow that takes up your entire yard. Just place it in a nice sunny spot and provide the right conditions, and you will make our pollinator friends happy.

Cost

Pollinator gardening is some of the most economical gardening you can do. You can start your garden with seeds that you have saved or purchased from a reputable seller like [Ferry-Morse](#). Starting with seed takes a bit more prep work as you have to remove the plants and vegetation currently in the space.

Or, you can use transplants. When using transplants, there are two types of plants to use. Full plants that have some size to them or plugs. Plugs are cheaper, young plants that come in small two-inch tubes that you can buy in large quantities. If you are planting a larger area, using plugs or seeds is the way to go.

It would help if you also looked around online for offers from organizations that support pollinator gardens. Many offer resources in the way of discounts or free seeds or plants to support the creation of pollinator gardens.

What Plants to Include in a Pollinator Garden

Start with native wildflowers that support local pollinators. [Milk weeds](#), [coneflowers](#), [Monarda](#), [solidago](#), [beardtongue](#), [yarrow](#), [coreopsis](#), and [witch hazel](#) for the winter months are all great plants for pollinators. Adding some native grasses is a good idea as well to give support and structure to your flowers. Do some research, and you will find the choices are extremely varied, depending on your [USDA hardiness zone](#). The main goal is to have blooms that provide a food source for as long as possible to the maximum number of pollinators. Try to choose plants that bloom year-round to keep your pollinator visitors happy and your garden looking beautiful.

Sustaining a Pollinator Garden

Pollinator gardens that contain mostly native [wildflowers](#) that grow in a variety of conditions are usually easy to maintain. Trees and shrubs are often included as well. Choose plants that are adaptable when it comes to soil and drought.

Once the garden is planted and established, besides occasional weeding, it requires almost no supplemental care and very little extra work. Think what flowers and vegetation you would see in a meadow in a field and consider—who fertilizes, weeds, and waters the milkweed, coneflowers, and bee balm there?

Does One Pollinator Garden Matter?

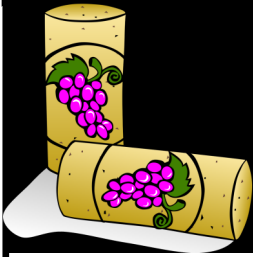
Yes! Creating an interconnected web of pollinator gardens is a goal vital to restoring balance to our ecosystem. This will allow local growers to produce food and commercial growers to continue to produce billions of dollars worth of crops for international consumption. A strong ecosystem allows plants and trees to improve air quality and helps stem off the effects of climate change.

Keys to a Good Pollinator Garden

There are a few elements that you need to include to make your garden a success. They are simple, easily done, and affordable but will make your garden into an elite Pollinator Bed and Breakfast:

- Use plants that give a source of food, shelter, and a place to raise young pollinators throughout the year.
- Provide a water source.
- Create large "drifts" of various [native plants](#).
- Place the garden in a sunny location, preferably with some area sheltered from the wind.
- Never use pesticides. You cannot use pesticides in a pollinator garden and still classify it as a pollinator garden.

Announcements



COVID & CORKS—Wine cork recycling benefits our earth’s sustainability. The Rotary Club of Yarmouth has over the last 18 months collected 14 pounds of corks which are sent to be recycled and then upcycled. Funded by the Widget Company, Cork Club is a sustainability initiative started in 2007. The goal of the Cork Club is to grow wine cork recycling and make donations to causes that protect our oceans and forests. The Cork Club donates to non-profit entities that clean plastic from our oceans, prevent deforestations and teach better ways to live in harmony with our environment. To date Cork Club has donated \$121,800 to these projects. For each natural cork, 2 cents is donated. Synthetic corks are recycled properly. So enjoy your wine and save the corks. All corks can be given to Jill Albright who will then ship them to Cork Club. **KEEP THOSE CORKS COMING!!!!**

MEALS ON WHEELS

April 4 - Mike Duffy & Tom Deltz
 April 11—John Gilligan & Chantal Rice
 April 18—Dr. Bruce & Sally Bowles
 April 24 -Pat Armstrong & Bill Lemoine
 May 2 –Steve & Jill Albright
 May 9-Ken Knell & Phil Morris
 May 16—Rafi Chaprut & Tom Deltz
 May 23—Joe Potzka & Tom Tomasik
 May 30—Mike Riley & Ken Livingston
 Substitutes Steve Albright or Frank Mastromauro
 Meet at the Yarmouth Senior Ctr.
 528 Forest Rd., South Yarmouth, MA
 9:30 AM

March’s Birthdays

Happy Birthday!!!!

- 3/1 Rafi Chaprut
- 3/4 Bernie Nugent
- 3/12 Barbara Adams
- 3/18 Jim McLoughlin
- 3/20 Bill boyd
- 3/24 Tom Deltz
- 3/27 Mike Karras
- 3/29 Pam Rideout
- 3/31 Jimmy Walker

March’s Anniversaries

Happy Anniversary!!!!

No Anniversaries this Month

FRONT DESK

March 31—John Gilligan & Dave Botting
 April 7—Hollie Handrahan & Jill Albright
 April 14—Bernie Nugent & Rufus Jones
 April 21—Tom Deltz & George Davis
 April 28—Paul Chatelain & Bill Lemoine
 May 5—Jimmy Walker & Bud Nugent
 May 12—Bob McInnis & Jill Albright

PLEASE be available at 6:30 AM on your scheduled Friday. If you cannot attend, please swap with another committee member.

Calendar

March 31—Robert J. Whritenour Jr. Yarmouth Town Administrator - Wastewater
 April 28-29 District Conference—Seacrest resort in Falmouth
 June 29—Officers Installation—The Loft—Rt 28, West Yarmouth

GUEST POLICY

Prospective members are the guests of the Club for their first meeting.

GREETER

March 31—Mary Lenihan
 April 7—Kevin Lennon
 April 14—Ken Livingston
 April 21—Janice Martin
 April 28—Frank Mastromauro
 May 5—Bob McInnis

SCHEDULES

The schedules through the end of the year for Greeter, Front Desk and Meals on Wheels have been updated.

They can be found on the home page on the Yarmouth Rotary Website. All you need to do is click on the link on the left side of the home page.

Program Committees: Please notify Steve Albright of your speakers. You are responsible for providing the write up on the speaker for the following week.

March
 Water & Sanitation
 Roby Whitehouse

April
 Maternal & Child Health
 Tomas Tolentino



FOOD of the MONTH for April is

SPAGHETTIO'S

All cans collect will go to assist CAPE COD Brite Lights to provide weekend backpack bags of food for children in grades K-3
Cash or Checks are Welcomed and we will do the Shopping for you.

SAVE THE DATE

Installation of Officers

Thursday June 29, 2023

5:30—9:00 PM

At the LOFT, RT. 28 West Yarmouth

· \$\$\$\$\$ Happy Bucks \$\$\$\$\$

Barry Clayman - Leave early for last week/Gershwin/Cape Tech Tour

Carol Woodbury - Jeff & presentation/Reminder of Ribbon Cutting, May 6 @ 10:30am and tour the building

From the list above, it seems not too many of us were very happy last week. Hopefully we will be this week. Put a smile on.



Food Supplies at the Pantry are very low and the demand for the services of the food pantry are up due. If you can make any type of food donation it would be greatly appreciated.

THESE ITEMS ARE ALWAYS NEEDED AT THE YARMOUTH FOOD PANTRY

Canned Pasta
Mac & Cheese
Peanut Butter
Jelly
Cereal

Syrup
Tuna Fish
Soup
Instant Potatoes
Nutri-Grain Bars

Drop your donations off at the Pantry Mon—Thurs. 10am to 12 noon.

Mail check donations to Yarmouth Food Pantry, PO Box 982

West Yarmouth, MA 02673



SAVE THE DATE

Tuesday September 26, 2023

Our Annual Golf Tournament at Cummaquid Golf Club

Items we will need: Golfers, Sponsors, Raffle Donations (Silent and drop item raffle)



ROTARY ANNIVERSARIES

March

Dave Akin—28 Years

Gerald “Curley” Carey—16 Years

John Gilligan—16 Years

Mary Vilbon—7 Years

Thank you all for your years of service to Rotary and to our Club!!!!

GOOD WORKS EMAIL ADDRESS: The Good Works Committee has a new email address. All correspondences and applications for assistance can be sent to the new email address. In addition applications for assistance can be found on the home page of our website. The new email address is: rotaryarmouthgoodworks@gmail.com

CLERGY SCHEDULE 3/31/23—4/7/23

3/31/23—Steve Albright

4/7/23—Dave Akin Returns

If you have a conflict, please switch with another member of the committee. Please let Rufus & Steve know.

Start by doing what's necessary; then do what's possible; and suddenly you are doing the impossible.

Francis of Assisi



We Recently Started a New Game
The Current Jackpot is:
\$146.00 plus this weeks Pot \$\$\$
You need to be there and buy a ticket to win!!!

CAPE COD BRITE LIGHTS

Cape Cod Brite Lights a501c(3) corporation that was started by our Rotary Club is now in it's third year. Its mission is "to help those in need on Cape Cod. "Our main focus to date has been to provide weekend backpacks of nutritional food for needy elementary students in the DY School System. A backpack of food consists of shelf stable milk (white & chocolate), juice carton, cereal, instant oatmeal, two proteins which could be a can of tuna, chicken, pasta, soup or beef stew, a cup of apple sauce, macaroni and cheese, Nutra grain fruit granola bar, cheese its, fruit snacks, pudding cup and 2 pieces of fruit. In addition, to give each student some activities to do during the holiday break we put a coloring book and crayons in each bag. We started with a total of 25 students but have grown to 45, an increase of over 80%. In addition, with the assistance of Interact we have started to provide the school nurse with feminine products for high school girls. In addition we will be providing students in need with bags of hygiene products during the upcoming school year. The Interact Club has applied for a District Grant to support this project.

How you can help:

First: Currently we have a board of directors of 11 members. Our bylaws allow us to have a maximum number of 13. If you would like to be a part of our leadership, please contact Steve Albright.

Second: We fill the backpacks and bags of food every Wednesday night at 5:30PM at the Yarmouth Food Pantry. If you would like to help one or two nights a month, again please contact Steve Albright. Currently we have enlisted the local Girl Scout Troop to help on the first Wednesday of each month and the DY Interact Club to help on the third Wednesday of each month. We are trying to make it a community organization where anybody can be a part of it.

Third: It costs \$200—\$250 yearly to support one child's backpack and although we don't have a total figure on the hygiene project, we know that the items provided are costly. You can make a donation to support these two projects by sending your check to:

Cape Cod Brite Lights—PO Box 286, West Yarmouth, MA 02673-0286

Or you can visit our website at Capecodbritelightsinc.com and make a contribution with your credit or debit card. In addition you can now sign up to make monthly donations to Brite Lights. A smaller amount each month makes it much easier. Visit our Website.

Fourth: Visit our website and learn more about us. Capecodbritelightsinc.com

Crutches For Africa

A Continuous Project by Yarmouth Rotary Club

Crutches for Africa is not a new project to our Rotary Club. We as a club have done collections for this great service and International project twice before. The first time we collected over 700 mobility devices and the second time we collected over 400 mobility devices. We are now hoping to set this up as an ongoing project. Mike Riley along with members of the International Committee are heading this project up but we would like all Yarmouth Rotarians to help out. Search for any of the desired items in your home, your extended families homes and your neighbors homes. Round up all of the devices and drop them off at the transfer station where we have a storage trailer to store them. They can be dropped off at the gate house just before you drop off your trash and recyclables. If you need help please give Mike Riley a call or send him a text to arrange pickup of your items. All of the items collected will be shipped to Africa to help disabled individuals gain mobility that they never have had.



Items that we are looking to collect include: Leg Braces; Crutches; Forearm Crutches; Walkers; Wheelchairs; Prosthetic Limbs; Baby Joggers and Strollers and Bike Trailers. No Commodes or any other type of Personal Hygiene Equipment.

(Also No Electric Wheelchairs or other types of devices.)



Leg Braces



Crutches



Forearm Crutches



Walkers



Wheelchairs



Prosthetic Limbs



Baby Joggers & Strollers



Bike Trailers

2022-2023 OFFICERS

President	Roby Whitehouse	Public Image	John Cooke
President Elect	Jill Albright	New Generations	Lou Preziosi
Vice President	Jim Seymour	Secretary	Mary Lenihan
Community Service	Paul Chatelain	Treasurer	Steve Albright PDG
International Service	Jackie Carnevali	Past President	John Gilligan PP
Vocational Service	Hollie Handrahan	Sergeant –At-Arms	Tomas Tolentino
Club Administration	Rufus Jones		

PAUL HARRIS FELLOWS

Barbara Adams +2	Betty Ghiazza	Rick Plumb
Charlie Adams +2	Ed Ghiazza	Joe Potzka
Dave Akin	Bill Glass +2	Larry Putman
Jill Albright (Major Donor)	Susan Glass	Shirley Putman
Steve Albright (Major Donor)	Dr. Bruce Gordon +3	Jim Quirk
Dave Angelica	Tom Gregory	Pam Rideout
Dick Appleton	Faith Hallett	Richard Rideout
Andy Armstrong	Sharon Hartley	Denise Ring
Pat Armstrong	Ron Hawes	Michael Riley
Matthew Barr	Betty Herr	Jim Saben
William Bergstrom	John Herr +8	Tammy Saben
David Bisbee	Richard Holden	Brian Salatiello
Judi Bisbee	Bob Huckman +1	Dr. Paula Santos
Blood Donor Center at CC Hospital	Sue Huckman	Elena Schuck
Jim Bogle	Matthew Johnson +2	Curt Sears
Jack Bohlin	Johnny Kelley	Marcia Shannon
Rick Boucher	Howard Kendall +3	Dr. David Seinkppf
Robert Boucher	Nicholas Kerrigan	Ken Sheytanian +3
Sally Bowles +2	Barbara LeFleur	Janet Soja +2
Brian Braginton Smith	Fern Lemay	Dick St. George
Jack Braginton Smith	Kevin Lennon +2	Kathy St. George
Rick Cannon	John Leon, Jr.	Esther Stochetti
Gerald "Curley" Carey +1	Jim & Pat Leighton	Jefferson Sherman Storm
Giuseppe Carnevali	John Lewis	Jerry Sullivan
Jacqueline Carnevali	Biob Lindquist	Jim Sullivan
Peter Carnes	Charles LoBue	Paul Tardif
Rafi Chaprut	John Lynch	Art Taylor
Bob Churchill	Jack Maclelland +1	Mary Ann Taylor
Barry Clayman (Major Donor)	Jerry Manning	Jan Tkaczyk
Gail Clayman (Major Donor)	Tom Martin	Bernice Todres
Carol Clossen	Frank Mastromauro	Dr. Tom Tomasik
John Cooke + 1	Ken McGuire	Mike Tulman
Hal Cooper	Dorcas McGurrian	Tom Ulrich +2
Finbarr Corr	Robert McInnis	Josephine Umbro
Dick Corsini	Linda McKnight +1	Ron Umbro
Richard Covell	Dave Miller	Scott Vandersall
Therese D'Abre	John Miller	James Walker Jr. +3
Dylan DeSilva	Margaret Morgan	James Walker Sr.
Bob Dubois	Phil Morris	Marlyn Walker
Mike Duffy	G. Anthony Morrison	Michael Walker
Kenneth Eubanks	Peter Murray	Erik Wallin
Marianne Eubanks +1	Bernie Nugent	Connie Weare
Leslie Fedge	Bud Nugent	Norme Weare +3
Jim Footer	Judi Olkkola	Fran Webb +1
Paul Funk	Howard Onik	Bob Wells +2
Sgt. Sean Gannon, YPD	Marilyn Padalino	Roby Whitehouse
KP Nero, YPD	Jim Peros	Carol Woodbury
Nancy Gardner	Linda Pisacano	Nickolas G. Xiarhos, USMC

ROTARY CLUB OF YARMOUTH

PAST PRESIDENTS

Richard K. Corsini	1989-90
Jerome J. Sullivan	1990-91
Linda McKnight	1991-92
Thomas J. Martin	1992-93
Phil Morris	1993-94
Rick Plumb	1994-95
Pam Rideout	1995-96
Judi Olkkola	1996-97
Esther Stochetti	1997-98
Rick Cannon	1998-99
Barbara LaFleur	1999-00
Rob Umbro	2000-01
Sally Bowles	2001-02
Jack MacLelland	2002-03
Jan Tkaczyk	2003-04
Rick Boucher	2004-05
Pat Armstrong	2005-06
Dorcas McGurrian	2006-07
Tom Tomasik	2007-08
Marianne Eubanks	2008-09
David Bisbee	2009-10
Jacqueline Adams	2010-11
Mike Riley	2011-12
Susan Provencher	2012-13
Stephen Albright	2013-14
Stephen Albright	2014-15
Tammy Saben	2015-16
Melissa Farrell	2016-17
Matthew Fitzsimmons	2017-18
Kevin Lennon	2018-19
Gerald Carey	2019-20
Gerald Carey	2020-21
John Gilligan	2021-22

THE FOUR WAY TEST

Of the things we think, say or do

1. Is it the **TRUTH**?
2. Is it **FAIR** to all concerned?
3. Will it build **GOODWILL** and **BETTER FRIENDSHIPS**?
4. Will it be **BENEFICIAL** to all concerned?"

Mon.	7:00 AM	Barnstable Sunrise	
Tues.	7:00 AM	Nauset /Orleans	Orleans Police Dept. 99 Eldredge Park Way, Orleans, MA 02653
	7:30 AM	Falmouth	Holiday Inn 291 Jones Rd Falmouth MA 02540
Wed	12:10	Martha's Vineyard	The Barn—Bowl & Bistro 13 Uncas Ave. Oaks Bluff, MA 02557
	12:15PM	Nantucket	Fairgrounds Restaurant, 27 Fairgrounds Rd. Nantucket, MA
	6:15PM	Chatham	400 East, 1421 Orleans-Harwich Rd. Harwich, Ma 02645
Thur.	7:00 AM	Bourne-Sandwich	Upper Cape Regional Technical High School
	7:00 AM	Harwich-Dennis	Grumpy's, 1408 Rt. 6A, Dennis, MA 02660
	8:00 AM	Osterville/Mashpee	Percy's Place Rt. 28 Mashpee, MA
	12:15	Hyannis	Hyannis Golf Club, 1840 Iyannough Rd. Hyannis, MA 02601

