



## THE FOUR-WAY TEST

- 1 Is it the TRUTH?
  - 2 Is it FAIR to all concerned?
  - 3 Will it build GOOD WILL & BETTER FRIENDSHIPS?
  - 4 Will it be BENEFICIAL to all concerned?
- (And... Is it FUN and SAFE?)

## Board of Directors Officers

Brian Nienhaus, Pres.  
Nicole Whitenight & Gail Daugherty, Pres.-Elect  
Irv Johnson, PE Nominee  
Jon Kindschy, Secretary  
Kathryn Vilha, Financial Sec.  
David Sweek, Treasurer  
Dwight Brummet, P-Pres.  
Steve Lemanski, Editorian

## Directors

Bob Eatman	2021
Bob Tello	2021
Diane Lapierre	2022
Chris Atib	2022
Laura Armstrong	2023
Dixie Schmatz	2023

## District Governor

Chris Woodruff (Greeley)  
ADG: Bob Eatman

## RI President

Holger Knaack



Rotary Opens Opportunities

## PROGRAM

**Feb 16** - "Pandemic Impacts on Larimer County Finances"  
by Irene Josey, Larimer County Treasurer

Inspiration: **Bob Eatman**

## CALENDAR

**February** - KidsPak deliveries on Mondays

**Feb 20** - District 5440 Coffee with DG (virtual)

## UPCOMING PROGRAM

**Feb 23** - "Did COVID-19 Change the Real Estate Market?" by our own **Nanci Garnand**

Inspiration: **Chris White**

**Birthdays** • Feb 18 - **Marc Schaffer** • Feb 22 -

**Steve Lemanski** and **Bill Moninger** |

**Anniversaries** • Feb 21 - **Charlie & Carolyn Bouchard**

currently a  
hybrid meeting  
format via...



## Rotary Club of Loveland

(meeting location when meeting in-person)

Tues Noon | Mountain View Presbyterian Church

## Rotary Satellite Group of Loveland

2nd Wednesday of Month, 6:30-8:00 pm

533 N Grant Ave. First United Methodist Church

Details: [www.facebook.com/RotarySatelliteGroupofLoveland](http://www.facebook.com/RotarySatelliteGroupofLoveland)

[RotarySatelliteGroupofLoveland](http://www.facebook.com/RotarySatelliteGroupofLoveland)

Chris Johnston - [chris@LCRealEstateGroup.com](mailto:chris@LCRealEstateGroup.com)

## Rotary Satellite Club of Berthoud

2nd/4th Wednesday of Month, 6:00 pm

Details: [www.facebook.com/BerthoudSatellite](http://www.facebook.com/BerthoudSatellite)

Jan Grack- [jgredram@gmail.com](mailto:jgredram@gmail.com)

[www.LovelandRotary.org](http://www.LovelandRotary.org)

P.O. Box 1144, Loveland, CO 80538

District 5440, Club 1113

Chartered in 1920 as Club 685

Feb 9, 2021

## Presiding

**Pres. Brian Nienhaus**

## Pledge + 4-Way Test

**Becky Huner**

(Red Badge Member)

## Songs

**Gary Camp** (keyboard)  
& **Irv Johnson** (vocal)

- "God Bless America"
- "You Are My Sunshine"

## Inspiration

**Jim Epstein**

[MORE ITEMS OF INTEREST](#)

## Duckster of the Week



Please support our loyal Duck Race sponsors like *Candlelight Dinner Playhouse* (Johnstown). Enjoy some live entertainment or buy a gift card for someone!

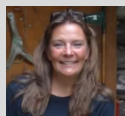
## Student of the Month

**Haley Jensen,**  
Thompson  
Valley H.S.



## Teacher of the Month

**Amy Burch,**  
Loveland H.S.



## Hybrid Meeting Rules

All in-person attendees must (please) **mask-up** (when not eating), **social distance** (6 ft.), and **sign-in** on attendance sheet.



## ANNOUNCEMENTS

**Jon Kindschy (Newest Rotarians):** Our newest

members, all of whom were in attendance, are pictured here (from left to right): **Becky Huner** (Reg. Nurse), **Cynthia**



**Duncan** (Cert. Paralegal), and **Jim Webb** (Pastor, Mountain View Presbyterian Church).

**Pres. Brian (Friend in Need):** Anyone wishing to offer support and encouragement to our former member Cindy Guldry (whose husband Gordon is in hospice care) can reach her here: [cjguldry@gmail.com](mailto:cjguldry@gmail.com) or 4188 Palm Drive, Denver, NC 28037.

**Jerry Westbrook (100 Yrs and Counting):** The *four focus areas* of Loveland Rotary's Strategic Plan for 2018-2022 are these: 1) Community Service, 2) Int'l Service, 3) Membership, and 4) Philanthropy.

**Julie Johnson Haffner (LRC Foundation):** What's new for 2021: 1) foundation website to be updated, 2) we will support KidsPak changes, as needed, and 3) our new accountant is Brian Jacobson.

**Mary Camp (RYLA):** Unfortunately, summer camps for 2021 have again been cancelled; there may be a *virtual camp* offered for the kids.

## PROGRAM

Retired Lt. Col. Joe Bowden's talk, titled "A Night Sky," included these highlights:

- Every star you see is at least as big and bright as our sun.
- Though our sun is bigger than about 90% of stars in our sky, it's still called a *yellow dwarf*; there are lots of smaller stars we can't see.
- The bigger the star, the shorter its lifespan; red stars are the coolest, while blue stars are the hottest.
- The easiest constellation to find is the Big Dipper, which also points to Polaris, aka the North Star.
- The closest star (triple star) to us is Alpha Centauri.
- The light from Andromeda Galaxy (the farthest thing in the sky visible with the naked eye), visible in the fall, takes 2.5 million years to reach us!

