



## OBJECT OF ROTARY

The Object of Rotary is to encourage and foster the ideal of service as a basis of worthy enterprise...

**"Service above Self"**

## Board of Directors

### Officers

Brian Nienhaus, Pres.  
Nicole Whitenight & Gail Daugherty, Pres.-Elect  
Irv Johnson, PE Nominee  
Jon Kindschy, Secretary  
Kathryn Vilha, Financial Sec.  
David Sweek, Treasurer  
Dwight Brummet, P-Pres.  
Steve Lemanski, Editorian

### Directors

Bob Eatman	2021
Bob Tello	2021
Diane Lapierre	2022
Chris Atib	2022
Laura Armstrong	2023
Dixie Schmatz	2023

## District Governor

Chris Woodruff (Greeley)  
ADG: Bob Eatman

## RI President

Holger Knaack



Rotary Opens Opportunities

## PROGRAM

**Apr 20** - "The Lost Pianos of Siberia" by acclaimed journalist and travel writer Sophy Roberts

Inspiration: **Judy Chapman**

## CALENDAR

**April** - KidsPak weekly deliveries on Mondays (except Apr 21)

**May 1, 15, 29** - District 5440  
Coffee with DG (virtual)

## UPCOMING PROGRAM

**Apr 27** - "Crypto Currency and Bitcoin" by Swedish author and entrepreneur Ihrén Abrahamsson

Inspiration: **Pat Williams**

**Birthdays** • Apr 20 - **Roy Allen**  
• Apr 21 - **Keith Cox**  
• Apr 22 - **Jim Kaylor**

currently a  
hybrid meeting  
format via...



### Rotary Club of Loveland

(meeting location when meeting in-person)

Tues Noon | Mountain View Presbyterian Church

### Rotary Satellite Group of Loveland

2nd Wednesday of Month, 6:30-8:00 pm  
533 N Grant Ave. First United Methodist Church  
Details: [www.facebook.com/RotarySatelliteGroupofLoveland](http://www.facebook.com/RotarySatelliteGroupofLoveland)

Chris Johnston - [chris@LCRealEstateGroup.com](mailto:chris@LCRealEstateGroup.com)

### Rotary Satellite Club of Berthoud

2nd/4th Wednesday of Month, 6:00 pm  
Details: [www.facebook.com/BerthoudSatellite](http://www.facebook.com/BerthoudSatellite)  
Jan Grack - [jgredram@gmail.com](mailto:jgredram@gmail.com)

[www.LovelandRotary.org](http://www.LovelandRotary.org)

P.O. Box 1144, Loveland, CO 80538

District 5440, Club 1113

Chartered in 1920 as Club 685

Apr 13, 2021

## Presiding | Pledge + 4-Way Test

Pres. Brian Nienhaus

## Sing-Along Songs

Gary Camp (keyboard)

"Battle Hymn of the Republic"

## Inspiration

Phil Ashcraft

[MORE ITEMS OF INTEREST](#)

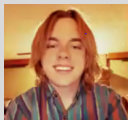
## Application Received

Carolyn Weinberg

## APRIL

### Student of the Month

Jaden Tucker,  
Loveland High School



## APRIL

### Teacher of the Month

Vince Mingils,  
Ponderosa Elementary School



## 100-Year History Book & Wine Glasses

If you didn't pick up yours, this past week, please arrange with Carol Stark, Jerry Westbrook, or Karl Muriby to obtain them by some other means.

## Meeting Reminders

Because still limited to a 50-person capacity, we need all in-person attendees to please...



1. **RSVP** to invitation by Noon Friday!
2. **mask-up** (when not eating)
3. **social distance** (6 ft.)
4. **sign-in** on attendance sheet

Thank you!

## ANNOUNCEMENTS

**John Turnage (Remembrance):** John delivered the touching story of the life of our beloved Rotarian Jack Wilson. The following are some of the highlights:



- Early in life, Jack excelled in sports and athletics, to which he returned later in life as a high school coach
- He first chose law as vocation (while in college), later switching to math education when he decided his life's calling was to work with kids
- He was very much the extrovert, and had this as a personal mantra: "Expect the best from people, and you will usually get it!"
- At Loveland H.S., he started the tennis team, helped make the swimming pool a reality, and was interim principal for a time

**Dr. Bob Tello (COVID Update):** Two facts are highly important to keep in mind: (1) the virus mutates when it is infecting a person, and unvaccinated persons, when infected, are promoting the spread of variants; and (2) 76% of COVID patients have residual effects for many months after having "recovered."

## PROGRAM

"The Coronavirus Pandemic in Loveland" by Steve Adams, Loveland City Manager



Highlights of his presentation included the following:

- **Financial Impacts:** overall losses estimated to be \$6 M to \$10 M required GF budget to be reduced by \$8 M by mid-year 2020
- **Lessons Learned:** home building and building materials (and tax revenue derived) increased; business sectors which suffered the most economically were hotels & motels and restaurants & bars
- **Challenges & Opportunities:** the loss of small businesses was great, as well as economic and health impacts to workforce, while strong partnerships were developed between city, healthcare, and TSD