



OBJECT OF ROTARY

The Object of Rotary is to encourage and foster the ideal of service as a basis of worthy enterprise...

“Service above Self”

Board of Directors Officers

Jim Epstein, President
Bob Tello, Co-Pres Elect
Diane Lapiere, Co-Pres Elect
Irv Johnson, Past President
Chris White, Pres Elect Nom
Jon Kindschy, Treasurer & Club Secretary

Julie Marko, Board Secretary
Kathryn Vilha, Financial Secretary
Steve Lemanski, Editorian
Dixie Schmatz, Committee Coordination and Engagement

Directors

Rick Parker (2024)
John Moore (2024)
Mary Camp (2025)
Matt Barber (2025)
David Carmichael (2026)
Hayden Lowry (2026)

District Governor

Steve Sehnert
(Steamboat Springs Rotary)
ADG: Kathi Wright
(Thompson Valley Rotary)

RI President

Gordon R. McInally (Scotland)



THIS WEEK'S PROGRAM

May 21 - “Understanding the Roots of the Israel-Hamas War” by Rotarian **Dave Mills**

Inspiration: **Mary McCambridge**

CALENDAR

May 11-Jun 9 - Governor's Art Show & Sale (Loveland Museum)

May 23 - Rotary After Hours (Gail Daugherty's home)

May 28 - Memorial Service for **Lee Asa** (2 PM in Longmont - more information in next bulletin)

UPCOMING PROGRAM

May 28 - Remember & Honor Project (Memorial Day Program) by Brad Hoopes, Author of *Reflections Of Our Gentle Warriors*

Inspiration: **Bob Eatman**

Birthdays • May 22 - **Bill Breunig** | **Anniversaries** • May 25 - **Jim & Nicole Whitenight**



Rotary Club of Loveland

Tues 12 PM | Mountain View Presbyterian Church

Website www.LovelandRotary.org

Events Calendar <https://portal.clubrunner.ca/5257/Events>

Rotary Satellite Club of Loveland

1st Wednesdays at 6:00 PM

Earl's Coffee Shop, 1421 N. Denver Ave. Loveland

Details: www.facebook.com/RotarySatelliteGroupofLoveland

Email: stephensongwen1@gmail.com

Rotary Satellite Club of Berthoud

2nd Wednesdays, 12:00 PM - Cornerstone Cafe

4th Wednesdays, 5:30 PM - Bradfords

Details: www.facebook.com/BerthoudSatellite

Email: BerthoudRotaryClub@gmail.com

P.O. Box 1144, Loveland, CO 80539

District 5440, Club 1113

Chartered in 1920 as Club 685

May 14, 2024

Presiding & Pledge (Open) & Four Way Test (Close)
President Jim



Sing-Along Songs

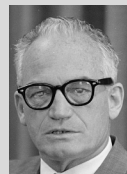
Gary Camp (Keyboard)
"God Bless America" & "Great Balls Afire"

Inspiration
Pat Williams



Did You Know?

I had close encounters with Sen. Barry Goldwater (R-AZ), twice in my life - first as a boy scout, selling light bulbs up where he lived (on Camelback Mtn, Scottsdale) and second as a young Navy serviceman (an accidental meeting in Washington, DC).



Newest Applications

Pat Murray
(Marc Schaffer, sponsor)
Don Oft
(Nanci Garnand, sponsor)



ANNOUNCEMENTS

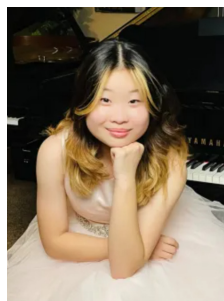
John Melton (*Grant Report*): The Loveland Orchestra thanks Loveland Rotary Club for its grant funding of this year's Young Artist Competition, held on March 2. First-prize winner, pianist Madison Suh, performed with the orchestra on April 19. The young aspiring virtuoso treated the audience, at Mountain View High School Auditorium, to one of the most well known and beloved classical works, the Grieg Piano Concerto.



Attend via Zoom!



2024 Young Artist Competition
1ST PLACE \$2000 Prize
Performance with the Loveland Orchestra
April 19th, 2024



LAST WEEK'S PROGRAM

Bob Peterson, Third Vice Chairman of the National Home Builders Association (NAHB) went into some depth in explaining to Loveland Rotarians the roots of the problem of

the high cost of housing and how metro districts - despite their flaws - are designed to make more homes affordable to more people. Here



Bob Peterson | NAHB

are a few highlights from his talk:

- Several important realities contribute to the high cost of housing: the supply of new homes has not kept up with population growth; developers/builders are deluged with local, state, and fed regulations; there's a steadily decreasing number of builders, as well as skilled trades people.
- The metro district model for new development came into being because local governments wanted to see growth pay its own way.
- Home builders do not make larger profits due to metro districts; the average margins of small, medium builders is only around 5-6%.