



Rotary
Lakes Entrance



CLUB No. 18406
DISTRICT 9815
CHARTERED 1959
ABN 34 766 344 882

THE ROTARY CLUB OF LAKES ENTRANCE

BULLETIN No. 16 of 2024/2025 : 23 JANUARY 2025

PRESIDENT ROTARY INTERNATIONAL: STEPHANIE A. URCHICK

DISTRICT 9815 GOVERNOR: COLIN BYRON

DISTRICT 9815 GIPPSLAND REGIONAL COMMUNITY GROUP

GIPPSLAND REGIONAL COMMUNITY GROUP LEADER: BILL DEGNAN

CLUB PRESIDENT: BERNARD ABRECHT

PAST PRESIDENT: SANDY YEATS

CLUB SECRETARY: PETER SINDREY

ASSISTANT SECRETARY: PETER MCCORMICK

CLUB TREASURER: JEFF WILSON

SERGEANT-AT-ARMS: KEN MCALPINE

ROTARY FOUNDATION: BRUCE HURLEY

PROGRAM COORDINATOR: SANDY YEATS

MEMBER LIAISON: LESLEY MACKENZIE

YOUTH SERVICES: JEFF WILSON

MEETINGS:

CENTRAL HOTEL
231 THE ESPLANADE
LAKES ENTRANCE
CLUB MEETINGS AT
5:30PM 2ND & 4TH
WEDNESDAY
EACH MONTH

CONTACTS:

MEETING ATTENDANCE: LESLEY MACKENZIE 0419 871 197
ENQUIRIES: BERNARD ABRECHT 0407 903 229

***IF YOU ARE ATTENDING A MEETING, YOU MUST ADVISE LESLEY
IN ADVANCE IN ORDER TO ALLOW SEATING ARRANGEMENTS.***

POSTAL : PO Box 260 LAKES ENTRANCE, VICTORIA 3909
EMAIL: info@lakesentrancerotary.org.au
WEBSITE: lakesentrancerotary.org.au

PRESIDENT BERNARD'S BRIEFING



Hello All

A packed meeting this week at the Esplanade Café, with lots to discuss, including a briefing about the Buchan Cup race day, and more about that later in the Bulletin.

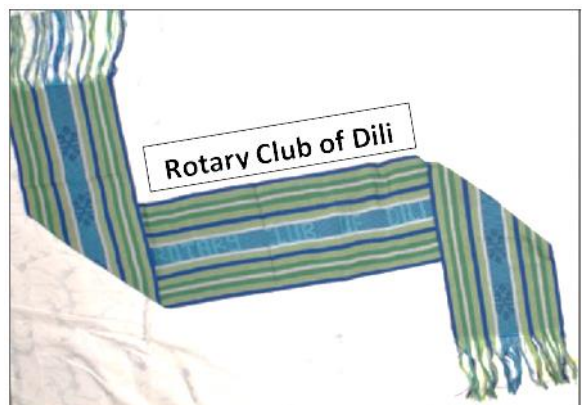
Our keynote speaker tonight was Judite, the Manager of the Rotary Office in Dili. Judite has spent some weeks in East Gippsland where she was able to spend extensive time working and talking to those in the area who are supporting redevelopment efforts in Timor Leste. She was also able to tell us about Rotary in her home country and how Rotarians work to improve community life through their own activities – and by working with volunteer organisations in Australia that support Timor Leste.

She also talked a little about her early life in Timor Leste and how she was able to progress her personal development through education and career advancement.

Our Club members were impressed with the breadth and complexities of Judite's role in her work in Dili. Members of our East Gippsland Friends of Timor Leste Committee will, no doubt, find all the information she provided will be very useful as they continue in their work to support Timor Leste.

Judite presented a gift to our Club, through our president Bernard. The gift was a beautifully woven banner, prepared by Timorese workers, which included the words "Rotary Club of Dili" incorporated into the fabric. A wonderful gift for our Club to remember Judite's visit.

We wish her a safe travel to her home.





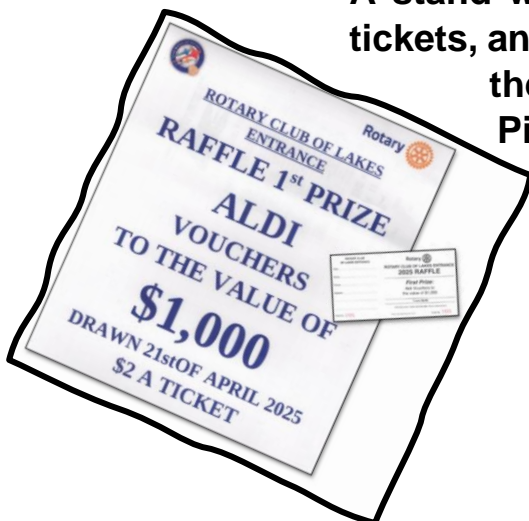
CLUB RAFFLE UNDERWAY ON 25 JANUARY

We have arranged our own Club raffle this year, starting on the 25th of January, the Saturday of the long weekend.

The first prize will be a \$1,000 voucher to be used at any Aldi store. Tickets are available for sale at \$2 each.

A stand will be set up at ALDI on Saturday to start selling tickets, and we need members to help on that day, and during the weeks following – including at the Canni Creek Picnic Raceday on Saturday 15 February.

Please contact Bernard Ph 0407 903 229 if you can help out with selling raffle tickets.



THE LAST SPIN AT THE SPORTS & COMMUNITY CLUB THIS SATURDAY NIGHT

This Saturday night, 25 January, will be the last raffle night at the Sports and Community Club for the season. These raffles, over the last 13 consecutive Saturdays, have been fun and profitable for our Club and we thank Jeff for his work in coordinating arrangements in the preparation and implementation of these events. Well done Jeff.

We are also grateful to the Sports and Community Club for their generous support to Rotary as a major sponsor. Their support is also demonstrated by allowing our raffles during the peak tourist season and for donating vouchers as raffle prizes.



JEMMY'S POINT BBQ WEDNESDAY 29 JANUARY

A social BBQ for members and friends at Jemmy's Point Park next Wednesday, commencing at 5:30PM. BYO and enjoy the view.



DINNER AT CATHY'S KITCHEN – WEDNESDAY 5 FEBRUARY

Join us at 5:30 PM on Wednesday 5 February when we hold a casual dinner at Cathy's Asian Kitchen, inside the Banjo Patterson Motor Inn on the Esplanade.

Note the restaurant is a 'no alcohol' venue at the moment and please call Lesley if you are coming so we can let the restaurant know numbers.

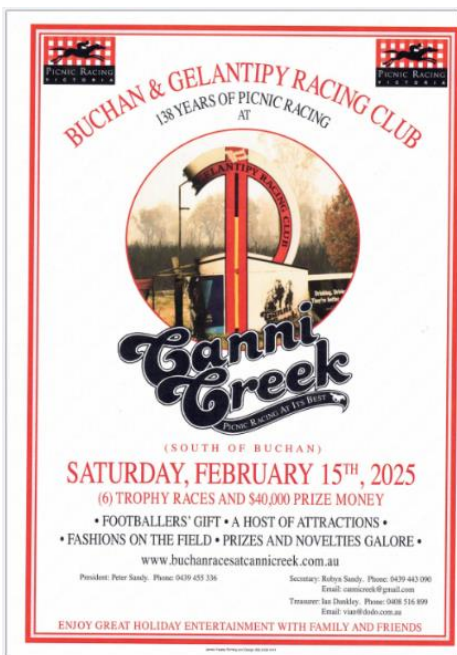
			
Cathy's Asian Kitchen		Cathy's Asian Kitchen	
MENU		MENU	
Telephone: 04 3647 3135		Telephone: 04 3647 3135	
Address: 131 Esplanade, Lakes Entrance VIC 3909		Address: 131 Esplanade, Lakes Entrance VIC 3909	
ENTREES		RICE DISHES	
Fried Chicken Wings	\$8.00	Nasi Lemak	\$16.50
Homemade Pork Dumplings (6pcs)	\$15.00	Coconut rice served with deep fried anchovies, cucumber, peanuts, boiled egg, and sambal sauce.	
Homemade Wonton Soup	\$8.00	Nasi Lemak Curry Chicken	\$21.50
Vegetable Spring Rolls (2pcs)	\$6.00	Nasi Lemak Beef Rendang	\$21.50
Fried Fish Tofu (6pcs)	\$6.00	Special Fried Rice	\$17.50
Flat CB Rolls (2pcs)	\$6.00	Fried rice with BBQ pork, bacon, and vegetables.	
Minced Pork, cheese and homemade special sauce wrapped in pastry skin.		Curry Chicken on Rice	\$22.50
ROTI CANAI		Beef Rendang on Rice	\$22.50
with Curry Dipping Sauce	\$7.50	BBQ Pork on Rice	\$22.50
with Curry Chicken	\$16.50	Pork Ribs Meat on Rice	\$22.50
with Beef Rendang	\$16.50	Sweet & Sour Chicken on Rice	\$22.50
MAIN DISHES		Coconut Basmati Rice	\$7.00
Chicken and Vegetables	\$29.00	Steam Rice	\$5.00
Stir fry chicken and mixed vegetables with garlic sauce.		NOODLE DISHES	
Chicken in Satay Sauce	\$29.00	Curry Laksa	\$20.50
Stir fry chicken with homemade satay sauce.		Spicy coconut curry soup with mix noodles, BBQ pork, chicken, tofu puffs, green beans, and bean sprouts.	
Cashew Nut Chicken	\$29.00	Vegetable Laksa	\$20.50
Curry Chicken	\$29.00	Spicy coconut curry soup with mix noodles, tofu puffs and mixed vegetables. (This is not a vegetarian dish)	
Chicken thighs in homemade curry.		Seafood Laksa	\$25.50
Beef Rendang	\$29.00	Spicy coconut curry soup with mix noodles, prawns, mussels, calamari, fish tofu, tofu puffs, green beans, and bean sprouts.	
Beef cubes in coconut milk and aromatic spices curry sauce.		Wonton Noodle Soup	\$23.50
Prawn and Vegetables	\$31.00	Chicken broth with mix noodles, wontons and vegetables.	
Stir fry prawns and mixed vegetables with garlic sauce.		Fried Hokkien Noodle	\$23.50
Prawn in Satay Sauce	\$31.00	Fried yellow noodles with prawns, BBQ pork, and vegetables.	
Stir fry prawns with homemade satay sauce.		Singapore Noodle	\$23.50
Sambal Prawn	\$31.00	Fried vermicelli with prawns, BBQ pork, and vegetables.	
Stir fry prawns with homemade chili paste.		Char Kway Teow	\$23.50
Stir Fry Seasonal Vegetables	\$26.00	Fried flat rice noodle with Chinese sausages, prawns, and fish cakes.	
Stir fry vegetables with garlic sauce. Extra: Cashew Nuts	\$2.00		
EXTRA			
Bowl of Chips	\$5.00		

*All prices are GST inclusive.
*Surcharge of 1.6% applies to all credit/debit card payments.
*Please inform us if you have allergies.

*Please be advised that food prepared may contain these ingredients: Milk, Eggs, Wheat, Soybean, Fish, Shellfish and traces of Peanuts and Tree nuts.

CANNI CREEK RACEDAY SATURDAY 15 FEBRUARY

Last night, Ian Dunkley presented a cheque to Bernard, from the Buchan & Gelantipy Racing Club. Their annual commitment as a major sponsor of our Club is so important in our efforts to grow as a viable and important voluntary organisation in East Gippsland.



The Raceday this year is Saturday 15 February and Ian is keen to hear from Rotarians willing to support the day in the various roles:

- Main entry payments.
- Car parking management.
- Silent auctions.
- Punters Club.
- Raffle sales.
- Memorabilia & merchandise sales.
- Raceday administration and support.

Those willing to help at the Raceday are asked to contact Ian – 0408 516 899.

Also, if any members have items they would like to donate to the silent auction, they should contact Ian with details.



VISIT TO LAKES & OUR EAST GIPPSLAND CLUBS BY DISTRICT GOVERNOR – WEDNESDAY 12 MARCH

Members may recall that Peter has spoken about a visit to Lakes Entrance by our District Governor Colin Byron (and his wife Leanne), in company with Gippsland Community Leader Bill Degnan (and his wife Judy). Arrangements have now been finalised for the visit to take place at the Central Hotel, commencing 5:30PM on Wednesday 12 March.



The meeting will be open to members from all Rotary Clubs in East Gippsland, as it is a great opportunity to have all local Clubs join together to meet with Colin and Bill.

Invitations have been sent to the other Clubs in the area – Mitchell River, Bairnsdale, Bairnsdale Sunrise, Orbost, e Club – and we are hoping there will be a good representation attending.



We have arranged a set, one-course main dinner meal (alternate drops) at a cost of \$30 per attendee. Other courses and drinks are a matter for individuals.

We will need to have confirmed numbers by 5 March at the latest (for catering) so we ask that acceptances are advised to Lesley Mackenzie on 0419 871 197 – and also to let Lesley know about dietary requirements.

The Lakes Club has taken the initiative in coordinating this special meeting and we would be grateful to have a sizeable number of members attending to represent our support.

HOME CARE PACKAGES WEDNESDAY 26 MARCH



On 26 March we will receive a presentation from senior members from Gippsland Lakes Complete Health, on the subject of 'Home Care Packages'.

Members will find this event very informative as it will include details of the 'Support at Home' changes which will come into force on 1 July 2025.

Please set the date aside to join the Club to hear the presentation.

OTHER LOCAL CLUB MEETINGS



Lakes Entrance RC	2 nd and 4 th Wednesdays of the month	5.30PM for 6:00 PM	Central Hotel Lakes Entrance
Bairnsdale RC	Tuesday	6PM for 6:15PM	Bairnsdale Club Nicholson St Bairnsdale
Mitchell River RC	Monday	5:45PM for 6:15PM	Bairnsdale Club Nicholson St Bairnsdale
Orbest RC	1st and 3 rd Wednesdays of the month	6PM for 6:30PM	Orbest Club Gladstone St Orbest
Bairnsdale Sunrise RC	Wednesday Mornings	6:45AM for 7AM	The Hub, 27 Dalmahoy Street Bairnsdale
Rotary eClub Latitude 38	Make contact on eclublature38@mail.com for the latest Zoom link	Make contact on eclublature38@mail.com for the latest Zoom link	Make contact on eclublature38@mail.com for the latest Zoom link

OUR CLUB PROGRAM

Date		Meeting Type	Venue	Program	Remarks
Jan	Wednesday 29th	Social	Jemmy's Point Park	5:30PM BBQ	BYO
Feb	Wednesday 5th	Social	Cathy's Asian Kitchen (inside Banjo Patterson Motor Inn)	5:30PM – Social dinner (Note: No liqueur Licence)	
Feb	Wednesday 12th	Board Meeting	Central Hotel	4:30PM	
Feb	Wednesday 12th	Club Assembly	Central Hotel	5:30PM Club Assembly	
Feb	Saturday 15th	Race Day	Canni Creek	Buchan Cup Day	See Bulletin
Mar	Wednesday 12th	Club & Cluster Meeting	Central Hotel	5:30PM Visit by DG Colin Byron & Leanne Community Leader Bill & Judy	See Bulletin
Mar	Wednesday 26th	Club Assembly	Central Hotel	5:30PM GLCH presentation on Home Care Packages	See Bulletin
Mar	Friday 26 th to Sunday 30th	District Conference	Bendigo	Annual District Conference	See Bulletin

Can all members please ensure that they contact Lesley – 0419 871 197 – to confirm attendance, by lunchtime on the Monday before a scheduled meeting.

DISTRICT CONFERENCE 28/30 MARCH IN BENDIGO

A reminder that full details of the District conference are available on the District website – just google District 9815 Conference 2025



The small fire extinguisher and the fire blanket are not just for safety around the house. They are also great to take camping.

Fire blankets are great to wrap around an arm or a leg if someone had their clothing catch fire, as well as still being there for you if your BBQ or gas bottle catches fire.

The fire extinguisher is also very handy to take on camping trips. They should be well shaken before use and if you need to use it point it at the base of the fire. Once you pull the trigger it will go for about 20 to 30 seconds

Put campfires out with water and don't just cover them with dirt.

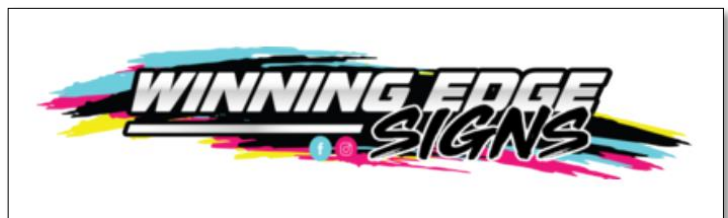


OUR CLUB SPONSORS

Our Club acknowledges the generous support, which continues to be offered by our eleven major sponsors. Their support is crucial to the continued viability of our Club and, as such, they form an important part of our life in Lakes Entrance. For these reasons our members support these sponsors and encourage others to do the same.



**Buchan & Gelantipy
Racing Club**



Lakes Entrance Bowls Club

