

# Rotary

CLUB PRAGUE  
INTERNATIONAL



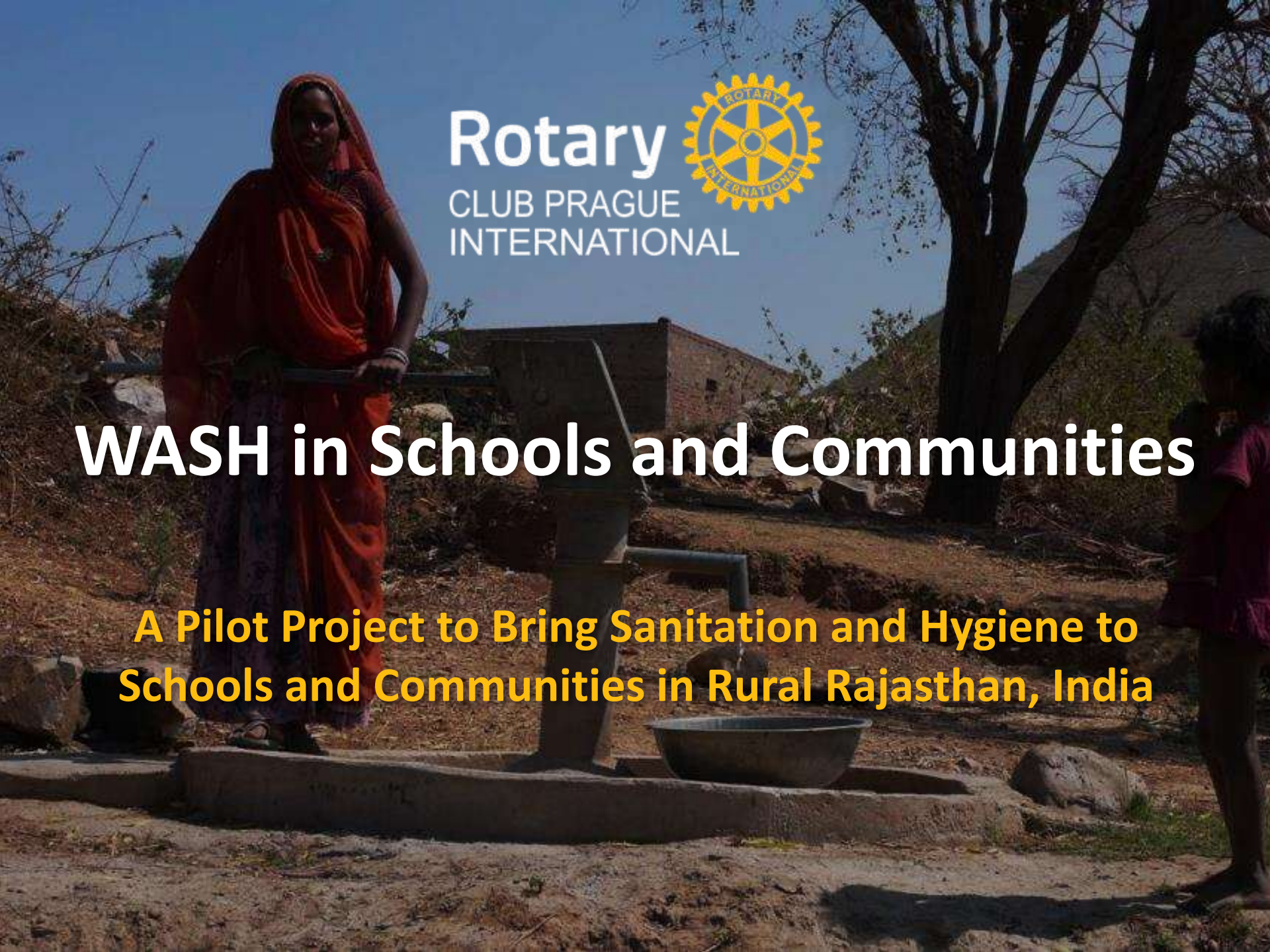


**Rotary**  
CLUB PRAGUE  
INTERNATIONAL



# WASH in Schools and Communities

**A Pilot Project to Bring Sanitation and Hygiene to  
Schools and Communities in Rural Rajasthan, India**





# Background



# Background

**RC Prague International has been cooperating with local people to support primary education in rural Rajasthan, India communities since 2008.**



# Target Area

INDIA

RAJASTHAN

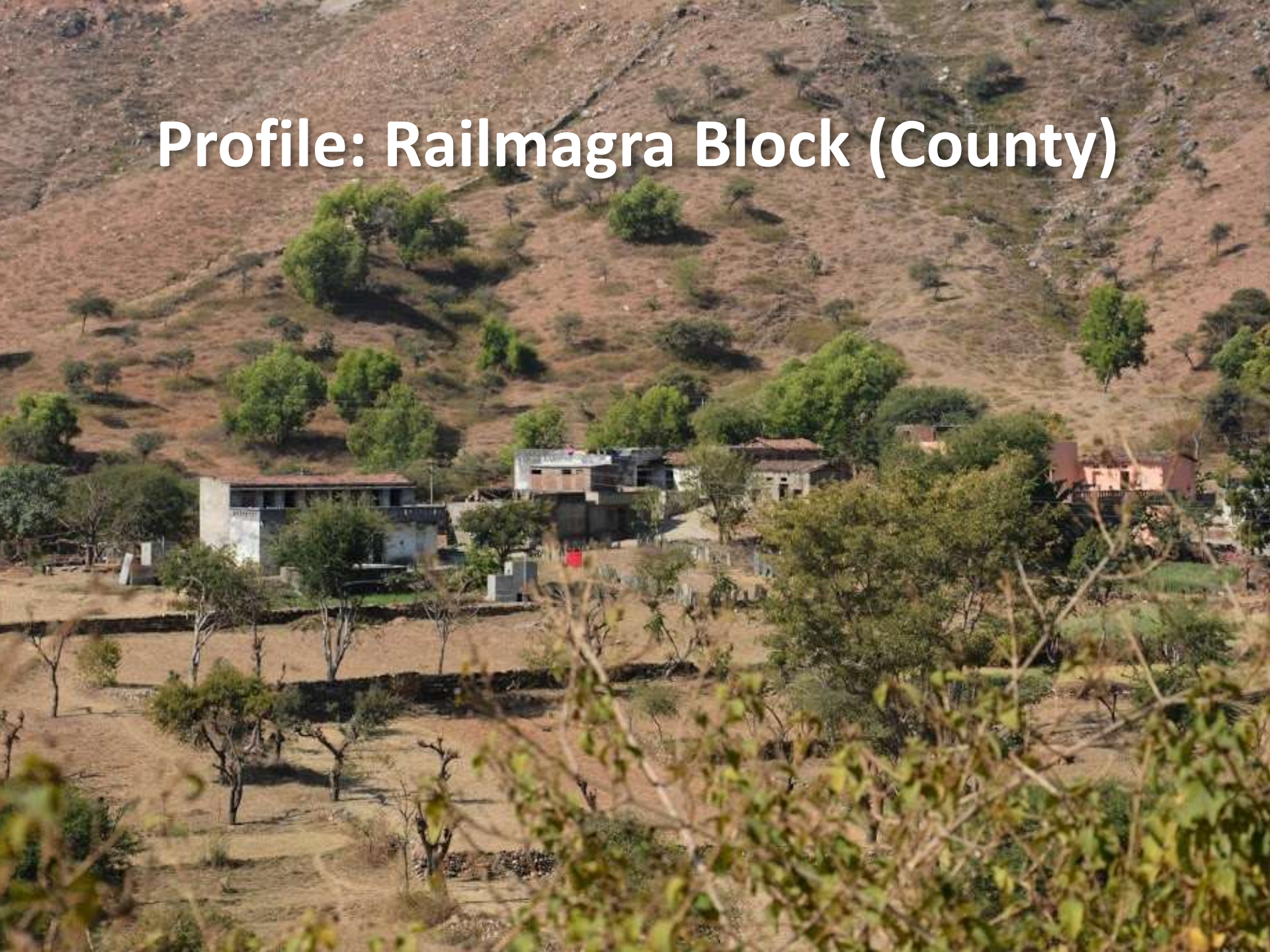
RAJSAMAND  
DISTRICT

Railmagra  
Block





# Profile: Railmagra Block (County)





# Profile: Railmagra Block (County)

- ☼ Population: 131,800. (2011 Census)
- ☼ Children aged 0-6 years: 18,013 (0.9 F/M ratio)
- ☼ Literacy: 52%
  - ✓ Male: 65%
  - ✓ Female: only 38%
- ☼ Principal Livelihood: Farming (44%)
- ☼ Unemployment: 51%



# Objectives





# Objectives



## **Reduce health issues related to water-borne disease and poor sanitation, by:**

- ✓ Increasing and improving access to safe drinking water
- ✓ Improving water availability and management for agriculture
- ✓ Providing school and community water, sanitation and hygiene (WASH) education & training



## **Increase school attendance, by:**

- ✓ Providing adequate school WASH facilities for girls, as well as boys
- ✓ Educating girls and women about menstrual health and introducing good practices



# Objectives

- 🌀 **Establish a model for community WASH development that can be extended to other villages and areas, by:**
  - ✓ Engaging with district and local governments to establish self-help project management groups
  - ✓ Providing training and support to local teams, to build knowledge and capacity

**This project is also intended to be sustainable, through education and communication that leads to behavioral change.**



# Local Rotary Partner





# Local Rotary Partner

## RC Udaipur Heritage

- ❁ Will provide financial control and local oversight
- ❁ Has experience implementing Global Grants
- ❁ Will contribute financially and likely bring additional local District Designated Funds (DDF)

<https://www.facebook.com/RCOUH>





# Actions





# Actions

- ⚙️ **Baseline survey and needs assessment**
- ⚙️ **Awareness raising and community mobilization**
- ⚙️ **Construction of water point in each of 5 communities**
- ⚙️ **Construction of school toilets in each of 5 communities**
  - ✓ Includes hand washing facilities
- ⚙️ **Creation of demonstration agricultural plots in 5 communities**
- ⚙️ **Provision of WASH Information, Education and Communication (IEC) materials**
- ⚙️ **Quarterly networking forums**
- ⚙️ **Field visits and outcome assessments**



# Implementing Partner





# Implementing Partner

## Jatan Sansthan

- ⚙️ Very experienced project implementer
- ⚙️ Long record of cooperating with UN bodies and “blue chip” NGOs
- ⚙️ Has capacity, expertise, and local knowledge
- ⚙️ Already works in this area and has surveyed it

<http://www.jatansansthan.org/>



# Project Timeline

# Project Timeline





# Projected Outcomes



# Projected Outcomes

**As a result of this 2-year project,  
5 communities in rural Rajasthan will have:**

- ⚙️ **Improved WASH facilities and hygiene education** in their primary schools, leading to improved sanitation, health and quality of life
- ⚙️ **Increased school attendance** by both boys *and* girls
- ⚙️ **Increased agricultural yields and income** through improved water recharge and bundling practices on test plots in all villages

**More than 5,000 people will be directly impacted, with entire communities benefiting from improved water, sanitation, hygiene, and agricultural livelihoods.**



# Sustainability





# Sustainability

**This project advances sustainability through:**

- ⚙️ **Communities assuming responsibility for ongoing maintenance needs, with technical advice and support as needed**
  - ✓ Re-activation or creation of Village Health, Sanitation and Nutrition Committees (VHSNCs) at the outset of the project
  - ✓ Activation of Community-Based Monitoring Systems (CBMSs)
  - ✓ VHSNCs will access funds from the National Health Mission to support ongoing maintenance
  - ✓ Student participation in monitoring, through “children’s parliaments”
- ⚙️ **Realization of economic benefits, encouraging farmers to adopt better practices without further support**
- ⚙️ **Alignment with district government (Gram Panchayat) initiatives to extend health and economic benefits to rural villages**



# Preliminary Budget

# Preliminary Budget

	USD
<b>CAPACITY BUILDING</b>	
Community-Level Exposure & Mobilization	4,000
<b>FACILITIES</b>	
Water Supply School Toilets Hand Washing Facilities	20,000
Demonstration Agricultural Plots	5,000
<b>DOCUMENTATION, PUBLICATIONS &amp; IEC MATERIALS</b>	
WASH Education, Training & Reporting Materials	3,000
<b>LIASON &amp; NETWORKING</b>	
Quarterly Convergence Forums	1,000
<b>MONITORING &amp; EVALUATION</b>	
Baseline Survey, Field Visits, Scheduled Review Meetings, Mid-Term Assessment & Other Evaluations	5,000
<b>PROJECT PERSONNEL</b>	
Dedicated Project Manager + 5 Community Mobilisers	20,000
<b>ADMINISTRATION &amp; CONTINGENCY</b>	5,000
<b>PROJECT DRAFT BUDGET TOTAL</b>	<b>63,000</b>



# Other Potential Partners



# Other Potential Partners

Other potential financial partners include:



RC Calgary NE (Canada)



RC Coral Gables (USA)



RC Nashua (USA)



RC Nashua West (USA)



Pure Water for the World (USA)



RC Trollhattan (Sweden)



RC Wilmette Sunrise (USA)





# Desired Partner Participation



# Desired Partner Participation

- 🌀 Club support in the range 5,000 to 10,000 USD
- 🌀 Matching or other District contribution
- 🌀 Named partner on the grant application
- 🌀 Share WASH experience with the RCPI team

**Partners are encouraged to join us on  
any visit to the project.**



**Rotary**  
CLUB PRAGUE  
INTERNATIONAL



**WASH in Schools and Communities**

**Thank You!**