



# Recycling Lithium-ion Batteries

Rochesterfest 2024

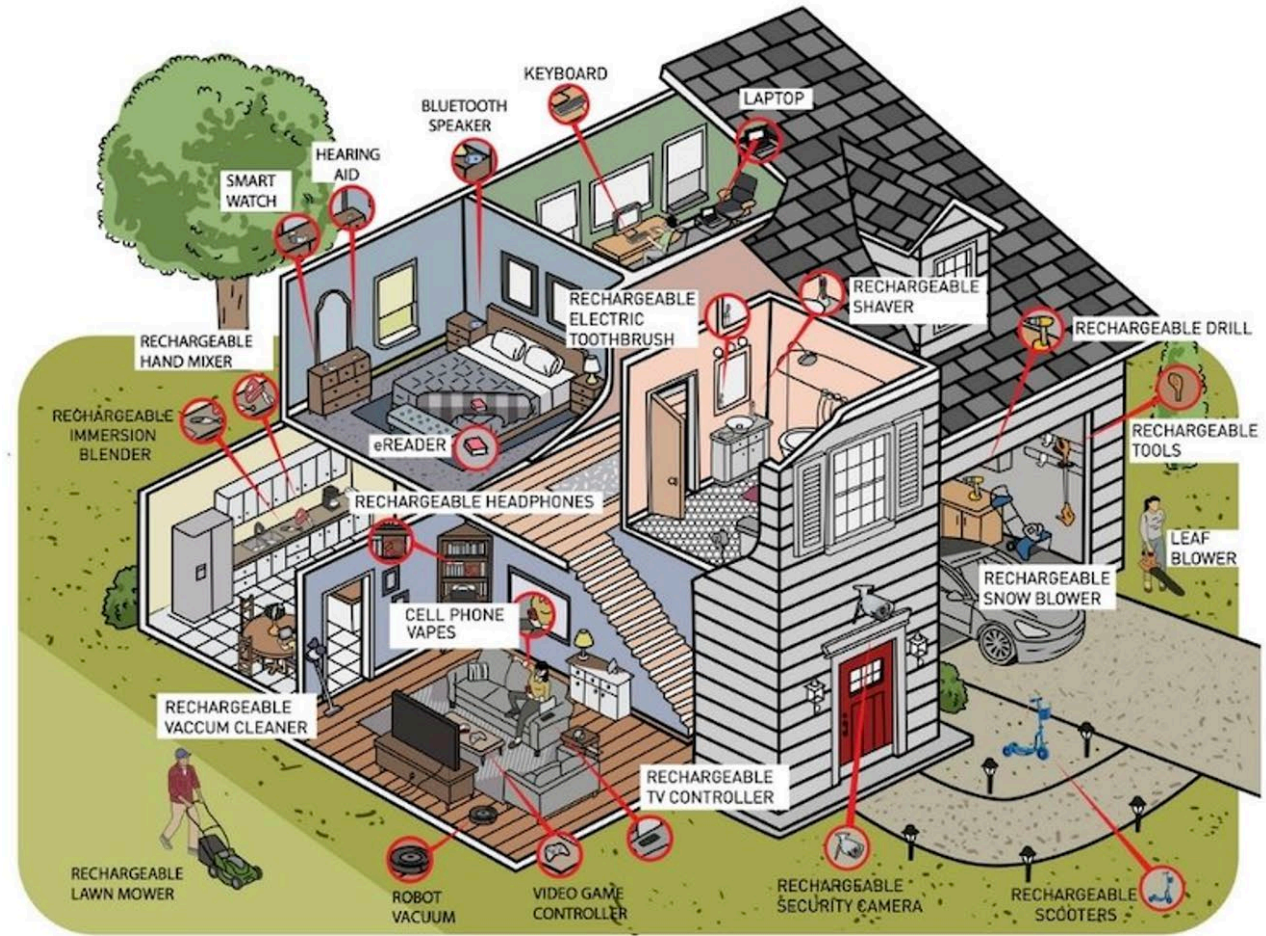
**June 27 – Three Rochester Rotary Clubs**



# Why recycle?

- **At most 5% of lithium-ion batteries are recycled**
  - **The domestic supply chain for raw battery materials is insecure.**
  - **Increase of domestic remanufacturing need for lithium-ion batteries.**
  - **Difficulty with mining minerals from the earth.**
- 
- 

# What can be recycled ?



“The largest lithium and cobalt reserves in the western hemisphere sit in America’s junk drawers.”  
J B Straubel, Founder & CEO Redwood Materials

# What can I recycle?



Cell phones

Electric toothbrushes

Hair clippers

Electric shavers

Cordless vacuums

Mixers/blenders

Robot vacuum

Electric lawn mower batteries

Laptops

Tablets

Bluetooth speakers

E-readers

Smart watches

Leaf/snow blowers batteries

Video game controller

TV remote control

Vapes (no tobacco residue inside)

E-bike batteries

Wireless headphones

Power tool batteries

Wireless keyboards/mice

Hearing aids

Electric scooter batteries

Security camera

## Please note:

To recycle your device with us, the item must contain a lithium-ion battery. It must **not** require a plugged-in cord to operate. We only accept rechargeable items with lithium-ion batteries.

WE WILL NOT  
ACCEPT:



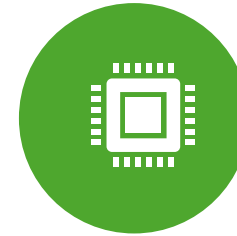
PRINTERS



COPIERS



FLAT TV  
SCREENS



CIRCUIT  
BOARD

Please note:

**If the item requires a plugged-in cord to operate, we cannot accept it.**

We are only able to accept wireless products with rechargeable lithium-ion batteries.

# FAQs

## Should I wipe my data?

Before dropping off a personal device, we encourage you to sign out of all your accounts, remove the SIM card and perform a factory reset to remove all personal data. Once received at Redwood (our processing location), devices are secured until they are recycled, ensuring any remaining personal information is completely destroyed.

## Do I need to remove the battery from the device before dropping it off?

No, you can drop the entire device in the collection bin.

## Do I bring chargers & accessories?

You do NOT need to bring any accessories or chargers to recycle your item.

# FYI - How should the batteries be packaged?

The U.S. Department of Transportation requires all **loose battery terminals** to be protected prior to transport. The two approved methods of protection are individually bagging batteries or taping the end terminals.

Bag the batteries, using the sealable bags provided or any clear sandwich bag. Place battery inside bag and seal it closed.

Or you can tape the batteries. Use only non-conductive tape such as electrical tape, duct tape, or clear packaging tape. Please do not use masking tape. Apply a layer of tape around the circumference of the battery and place them in a plastic bag provided.

Any consumer devices with a battery inside (ex: phone, laptop, or tablet) can be placed directly in the bin.

# Before our club members prepare the batteries for shipping back to Redwood -

There is a 4- minute Mandatory Safety Training Video for all lithium-ion battery recycling event participants.

<https://app.frame.io/presentations/daaabe60-33d2-42ee-838a-e140344dc944>

You'll learn what kind of batteries and devices are accepted

and how to properly prep those batteries for recycling.

Each battery must follow these battery prep instructions, as well as the full set of DOT's rules applicable to lithium-ion battery shipments.

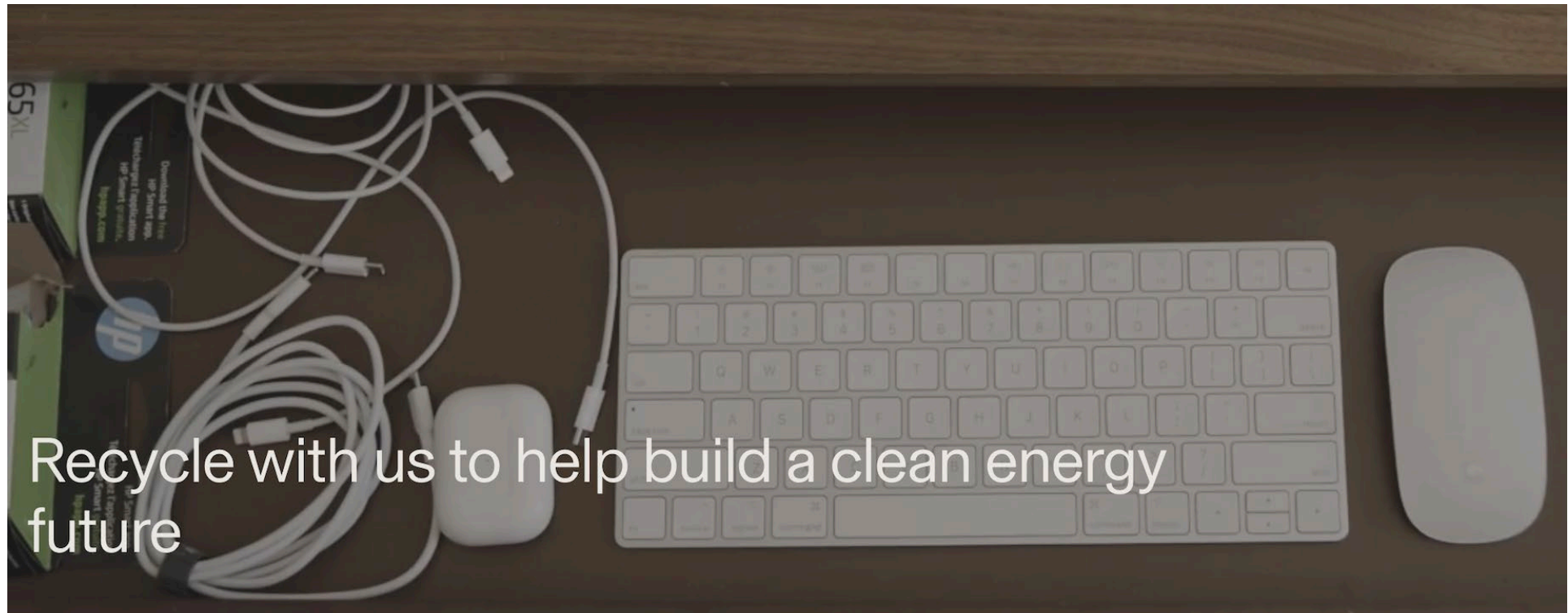
The shipping containers have the plastic bags for wrapping. Bring duct tape.

**If recycled, your lithium-ion batteries and rechargeable devices can decrease global reliance on mining and lower the cost and environmental impact of our products.**

---

<https://www.redwoodmaterials.com/recycle-with-us/>

This link leads to a video and a map. The orange markers on the map show current Rotary Club activity.



# Rochesterfest , June 27

## Recycle Your Lithium-Ion Batteries

### What can I recycle?

- |                               |                             |                                   |
|-------------------------------|-----------------------------|-----------------------------------|
| Cell phones                   | Laptops                     | Vapes (no tobacco residue inside) |
| Electric toothbrushes         | Tablets                     | E-bike batteries                  |
| Hair clippers                 | Bluetooth speakers          | Wireless headphones               |
| Electric shavers              | E-readers                   | Power tool batteries              |
| Cordless vacuums              | Smart watches               | Wireless keyboards/mice           |
| Mixers/blenders               | Leaf/snow blowers batteries | Hearing aids                      |
| Robot vacuum                  | Video game controller       | Electric scooter batteries        |
| Electric lawn mower batteries | TV remote control           | Security camera                   |

**Please note:**  
**If the item requires a plugged-in cord to operate, we cannot accept it.**  
We are only able to accept wireless products with rechargeable lithium-ion batteries.



WE WILL NOT ACCEPT:



PRINTERS



COPIERS



FLAT TV  
SCREENS

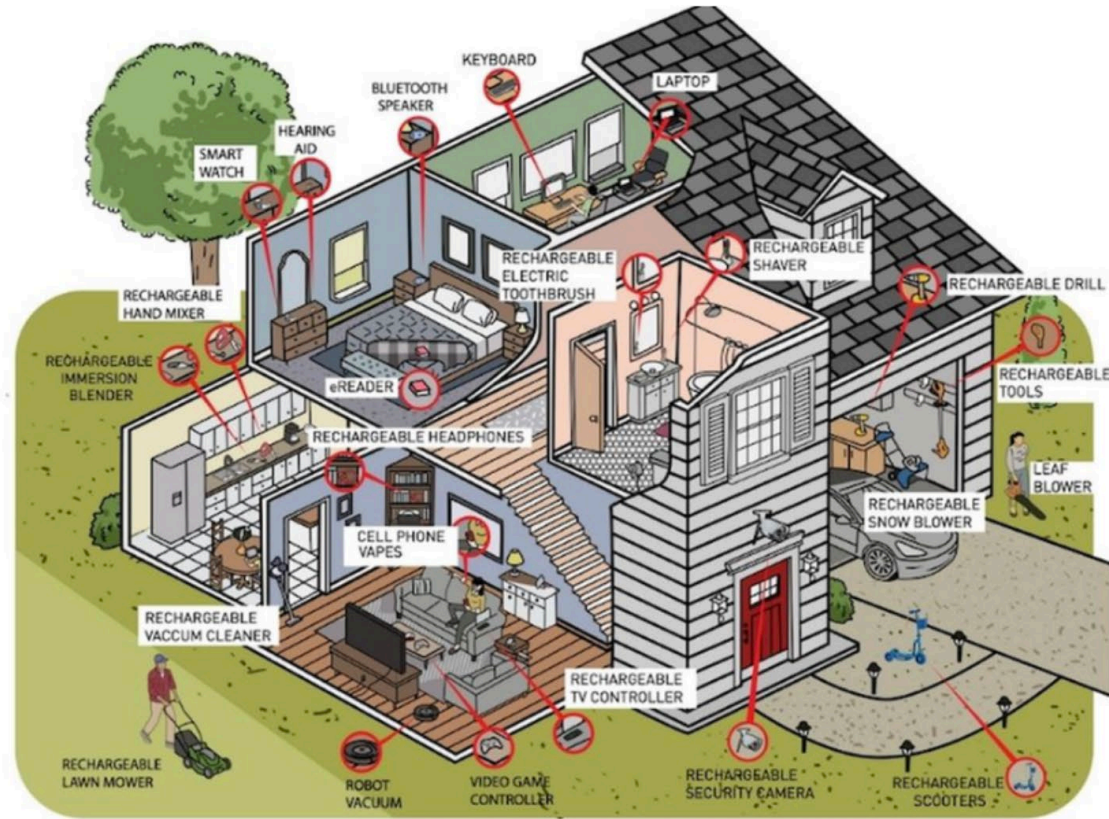


CIRCUIT  
BOARD

# Rochesterfest , June 27

## Recycle Your Lithium-Ion Batteries

What can be recycled ?



**Rotary Clubs of  
Rochester  
Minnesota**

@REALLYGREATSITE

# What Goes Inside A Lithium Ion Battery?

Top 4 metals used are:

1. NICKEL 90\*
2. MANGANESE 30\*
3. COBALT 20\*
4. LITHIUM 10\*

\*Percentage



Recycle your Lithium – ion  
Batteries

June 27

Rochesterfest

