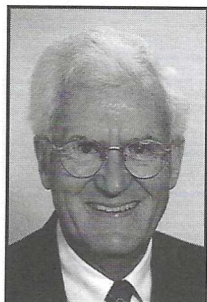


ure, but it eventually did fall victim to major changes in society and to the growth of an often mindless bureaucracy.

First came the social changes. Increased family mobility freed Rockford residents and their children for family vacations.



Howard Bell

No longer were the children trapped in the city during hot summer months. With this change, the demand for the type of camping offered by Camp Rotary fell sharply.

New rules

At the same time, increasingly stringent county, state, and federal codes led to alarming and hugely costly increases in maintenance and modernization demands.

As early as September of 1966, Rockford Rotary President Frank Ellis warned that \$30,000 to \$40,000 in essential construction and maintenance was needed, thanks to new county and state requirements.

Rotarians met this challenge, and several more that came over the next few years.

End in Sight

The end of Camp Rotary was in sight, however, in the fall of 1973 the Rockford Boys' Club Association, which long had managed the camp under contract with Rockford Rotary, demanded a long list of changes, both in camp facilities and in the management agreement. Boys' Club officials said they no longer had enough staff to man the camp.

June 1961



Camp Rotary gave youths an opportunity to learn skills, such as archery, in a natural setting. The camp had residential facilities, and the Rockford Boys Club provided instructors and other camp staff needed to conduct the camp's summer programs.

Special Committee

A special Rotary committee headed by Howard Bell sought other arrangements. The Rockford Park District staffed the camp for two years.

An agreement was discussed with Northern Illinois University to use the camp for off-campus activities. The Rockford School District, Boy Scouts, and several church groups used the camp for short periods. But there simply was not enough demand to justify the costs.

Committee Reforms

In May of 1977, Howard Bell's committee was reformed, again including Roy Fridh, Ross Robbins, Don Wortmann, and Rusty Gates as members. They were charged with recommending disposition of the camp and with considering alternative areas for the involvement of Rotary.

In July of 1978, Rockford Rotary voted 165-8 to dispose of the camp, but only if the 83 acres of land could be preserved for use by the