

Growing food for people and for wildlife in and around Skaneateles



D  **C**
SWEET LIGHT
L **U** **M**
WILD SOIL
F **A** **R** **M**
AWESOME FOOD



Go Native!
perennials

(240) 626-5209
growingforskan.com

Backstory...



2016

Maryland Farm



2017

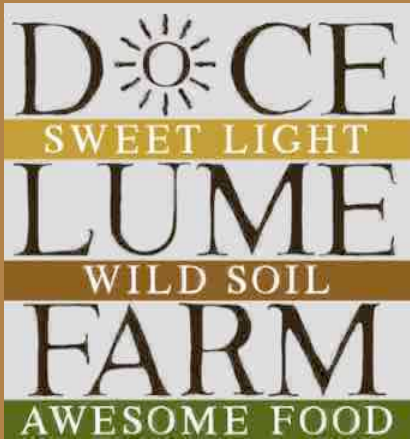
Harmful Algal Bloom



2019

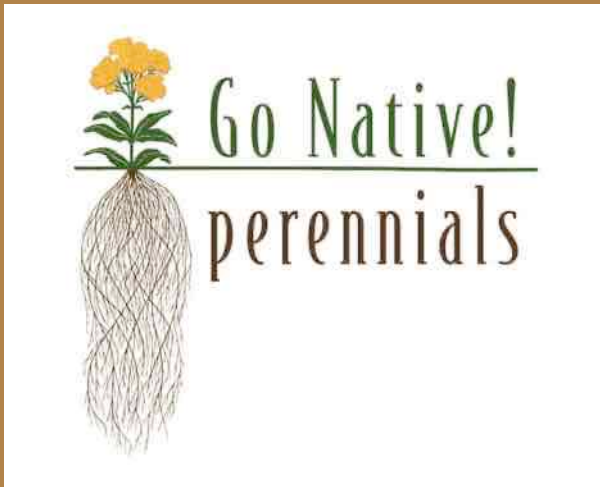
Mary Menapace Janice
Wiles
Started farming in Skan

2019



Grow nutritious food for our friends and neighbors on healthy soils using regenerative agricultural practices.

Docelumefarm.com

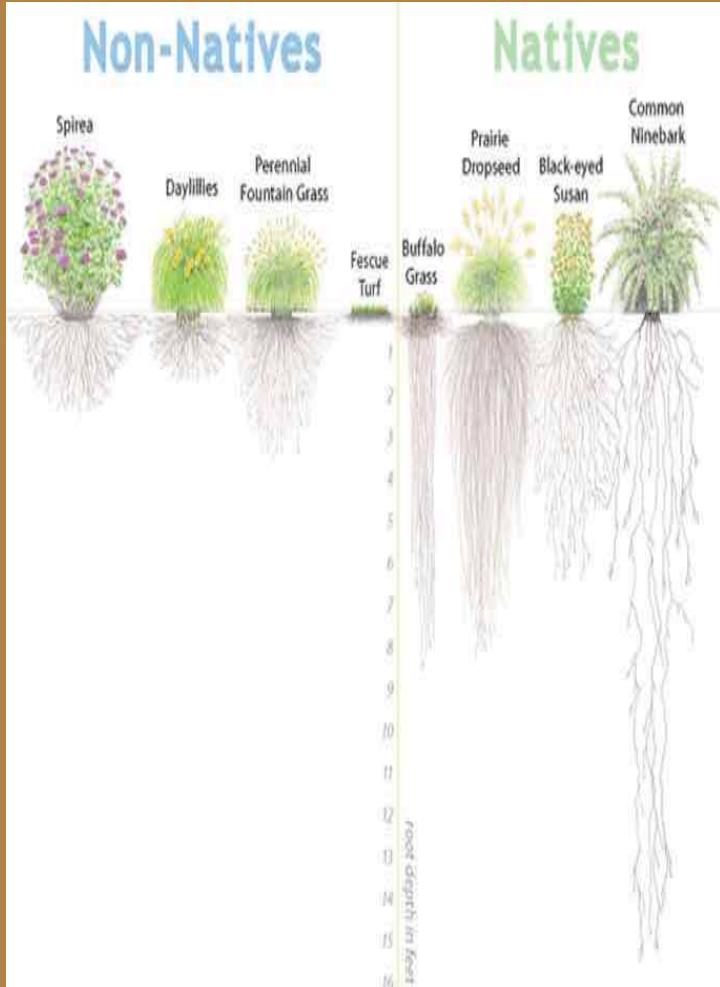


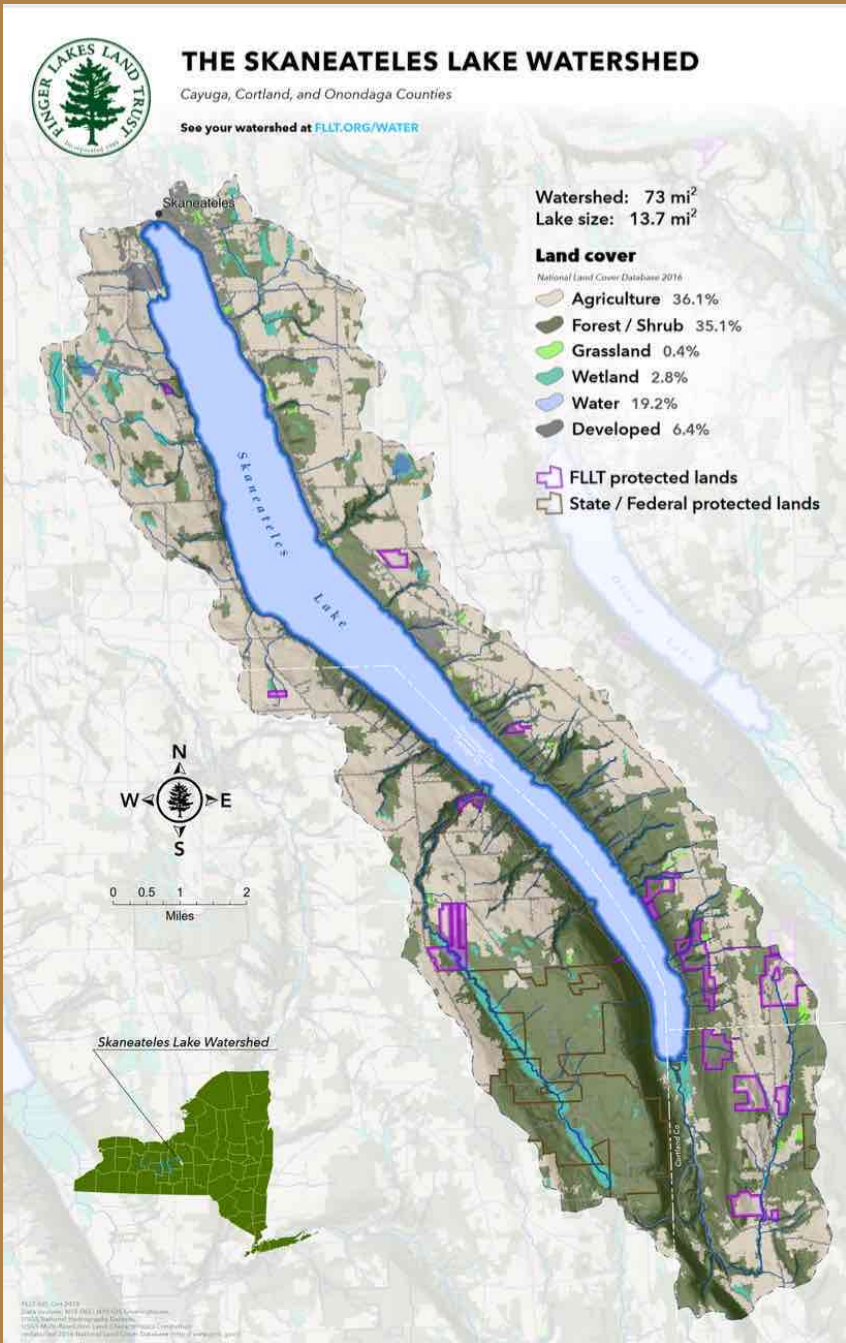
Re-naturalize the Skaneateles Lake watershed with native plants to mitigate polluted runoff from increasingly frequent heavy rainfall events and address the looming challenges of insect collapse and bird population decline.

Gonativeperennials.com

WHY?

Native perennial plants grow deep roots, capture rain and prevent runoff.





Unfiltered drinking water for over 220,000 households - includes Syracuse

Skaneateles Lake is fed by a 73mi² watershed.

The lake has 153 tributaries, many steep slopes (banks are barren of vegetation erode away).

2600 residences in the watershed.

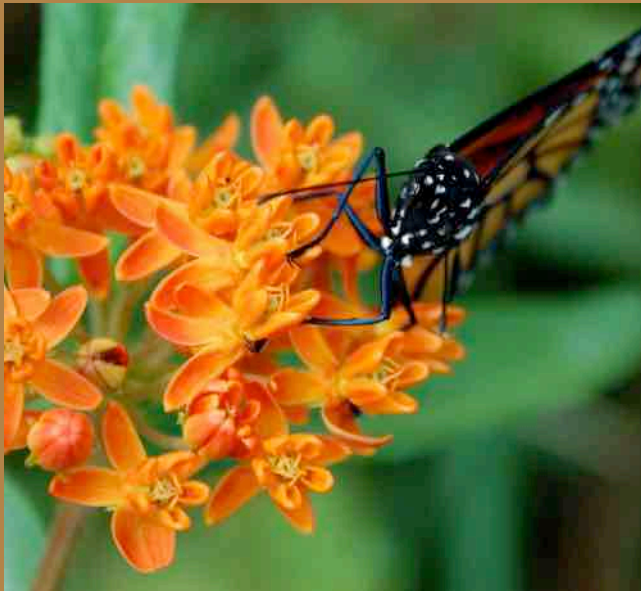
1000 homes and camps along 35 mi of shoreline.

WHY?

Our native birds have co-evolved with native plants, as have native insects that use the plants as hosts.

Most plants available in nurseries are from other countries and **DO NOT** support insects that birds eat.

We're starving our birds.



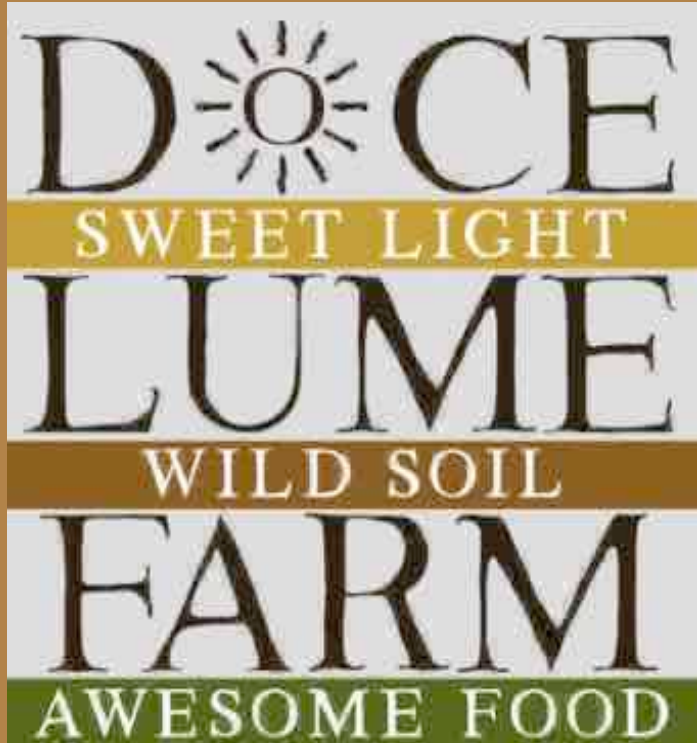
Ninety-six percent (96%) of all terrestrial bird species in North America feed insects (mostly caterpillars) to their young.

We're starving our baby birds.

We've lost 40% of our insects in the past 4 decades.

No native plants? No insects. No birds.

WHY? Easy access to nutritionally dense food!



Build healthy “wild” soil:

- Biological vs Chemical Farming
- No till
- Replenish soil with compost
- Utilize cover crops
- Augment fungi:bacteria ratio



2019



2020

COVID-19
Online ordering
for safe pickup



An online market for local foods and native plants

2020: built hoop houses, germinated seeds we collected and stratified



2021: stratified thousands of seeds, 5 hoop houses with germinating plants



2021: SUNY ESF Restoration Science Center showed us how to create meadows



We created 2 meadows at Doce Lume Farm. Photo on the right is one of them. Photo above is another one at Dan and Lori 's (Ruhlman) Colony property. Both meadows are just 3 - months old.



2021: 40 family CSA



2022

**Goal: 70 CSA
Families**

SUMMER 2022 CSA
organic, fresh, local, nutritious



DOCE LUME FARM
SWEET POTATOS
WILD SALES
AWESOME FOOD

SUBSCRIBE TO DOCE LUME FARM 2022 CSA
BEFORE 2/26/22 AND ENTER OUR RAFFLE TO WIN NATIVE PLANTS
WWW.GROWINGFORSKAN.COM SHOP

Read the FAQs
<https://www.growingforskan.com/f-a-q>

Please spread the word! Sign up by 2/26 and enter raffle to win \$100 of native plants.

2022: Landscaping

Why should we landscape with native plants?

We currently have a patchwork of native plants around us.

By landscaping with native plants, we can turn a patchwork of green spaces into a quilt of restored habitat.



Landscape Design for Heavy Rains, Beauty and Butterflies

4-part educational series for landscape designers and homeowners in the Skaneateles Lake watershed

With Larry Weaner, nationally recognized for his ecologically functional and beautiful gardens

March 23, April 27, June 24, July 13, 2022

2022

Start 1000s
of native
trees and
shrubs

Continue
planting
Founder's
Plots



What is a Founder's Plot? At Doce Lume Farm it is a 50' (2.5' wide) bed on which we grow 1-2 native plant species to maturity for 1) seed production, 2) mature plant sales and 3) for demonstration purposes.

DO WE HAVE ALL THE PIECES FOR WATERSHED RENATURALIZATION?

BOTANISTS

Step 1: Following the Seeds of Success protocols, our botanists will collect seed of our native plants uniquely suited for our ecoregion.

FARMERS

Step 2: Organic farmers grow out the wild collected seed in "Founder Plots" to amplifying the production of this special ecotype seed. From these plots we can harvest hundreds of thousands of seeds each year.

SEED SAVERS

Step 3: Seed savers harvest, clean, count, and prepare the seed for nursery production

NURSERIES

Step 4: Local nurseries can use the seed to grow out tens of thousands of "plugs" each year for wholesale and retail sales.

LANDSCAPERS AND HOMEOWNERS

Step 5: Thousands of Accredited Organic Land Care Professionals trained and tested in organic landscaping practices support the development of The Ecotype Project and champion the re-wilding of our landscapes to better support the ecological services needed on all working land.

RESTORATION SCALE CONSERVATIONISTS

Step 6: The CT Native Plants Working Group welcomes a diverse group of partners to work on "scaling up" seed production as well as providing expertise and oversight to The Ecotype Project as it develops.



Cornell Botanical Garden/Mundy Wildflower Garden



Go Native! perennials



Go Native! perennials



Landscaper/
homeowner
interest and
commitment?

FLLT
FLNPS
SLA



Retail Hours

Active season
May 15th - Oct 15th

Seasonal visiting hours
Tues & Fri 3:30 PM - 6PM

Order online between
Fri 8 AM to Tues 11:59 PM

Find Us

Physical address:
3130 East Lake Rd.
Skaneateles, NY 13152

Mailing address:
100 East Lake Rd.
Skaneateles, NY 13152

Contact Us

docelumefarm@gmail.com
240-626-5209



Meet The Team



Janice Wiles
Co-Founder &
Owner



Melinda Horvath
Field Associate



**Sarah
Wiles-Ehmann**
Market Associate



Stephanie Reeves
Field Associate

DOCELUMEFARM.COM



**Enter to win \$100 value in native plants by subscribing to our CSA by 2/26/22!
Visit us on the farm!**