



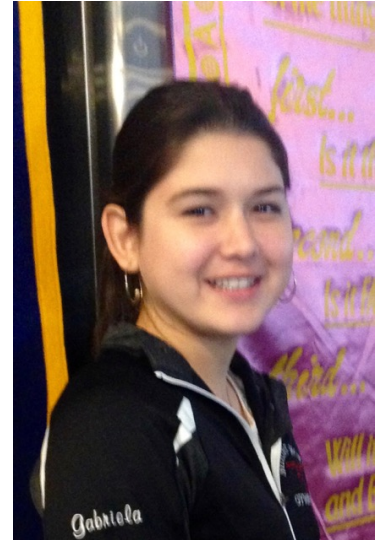
MOUNT HOREB ROTARY CLUB
Established 1939

Dear Concerned Friends,

The Mount Horeb Rotary Club is reaching out to you on behalf of the communities in Ecuador impacted by the recent devastating earthquakes. We find ourselves in a unique position to help because we are currently hosting a Youth Rotary Exchange Student, Gabriela Giler, from the town of Portoviejo in Ecuador.

We've learned so far that all of her immediate family and friends are safe and are striving to help her cope with the initial shock and emotions associated with her presence in the U.S. during this time. We are all realizing that her continued involvement in our country until July can be a very positive thing as she has the ability to greatly benefit her hometown & country from here. We are all saddened, yet we feel very fortunate to be able to have a person who can help us communicate directly and easily with her community and foster ongoing relationships in order to provide service through Rotary.

We have been in direct contact with the Rotary District Governor of the area. Immediate needs include shelter, food and water. Today we wired \$1000 to their District and bought a ShelterBox. Ongoing, our club goal is to provide short, medium, as well as long-term help for the eight Rotary communities in Ecuador impacted by this disaster.



It is clear that the impact of this disaster will be felt for a long time. We have set up a fund, Mt. Horeb Rotary Ecuador Relief, at the State Bank of Cross Plains. Through various methods we plan to see this through and are grateful for the permanent connection between Gabriela and our Rotary community. Long range plans include developing a micro-lending program and writing Rotary District and Rotary World Matching Grants.

Our resolve is strengthened through the ability to put the incredible power of District and Rotary International Grants behind this effort.

Please make checks out to "Mt Horeb Rotary Ecuador Relief". The Mt. Horeb Rotary Foundation is a 501c3 organization and donations may be deductible to the extent of the law. Please send to State Bank of Cross Plains, 1740 Springdale Street, Mt Horeb, WI 53572 or dropped at any State Bank of Cross Plains branch. Thank you for your time and consideration.

Service Above Self,

Mount Horeb Rotary

Contacts:

Shawn Bollig, International Committee Chair...(608) 279-3799 cell

Judy Steinhauer, Rotary Youth Exchange Committee Chair...(608) 807-7363 cell

Russ Christian, Int'l Committee Member/writer of this email...(608) 692-1984 cell