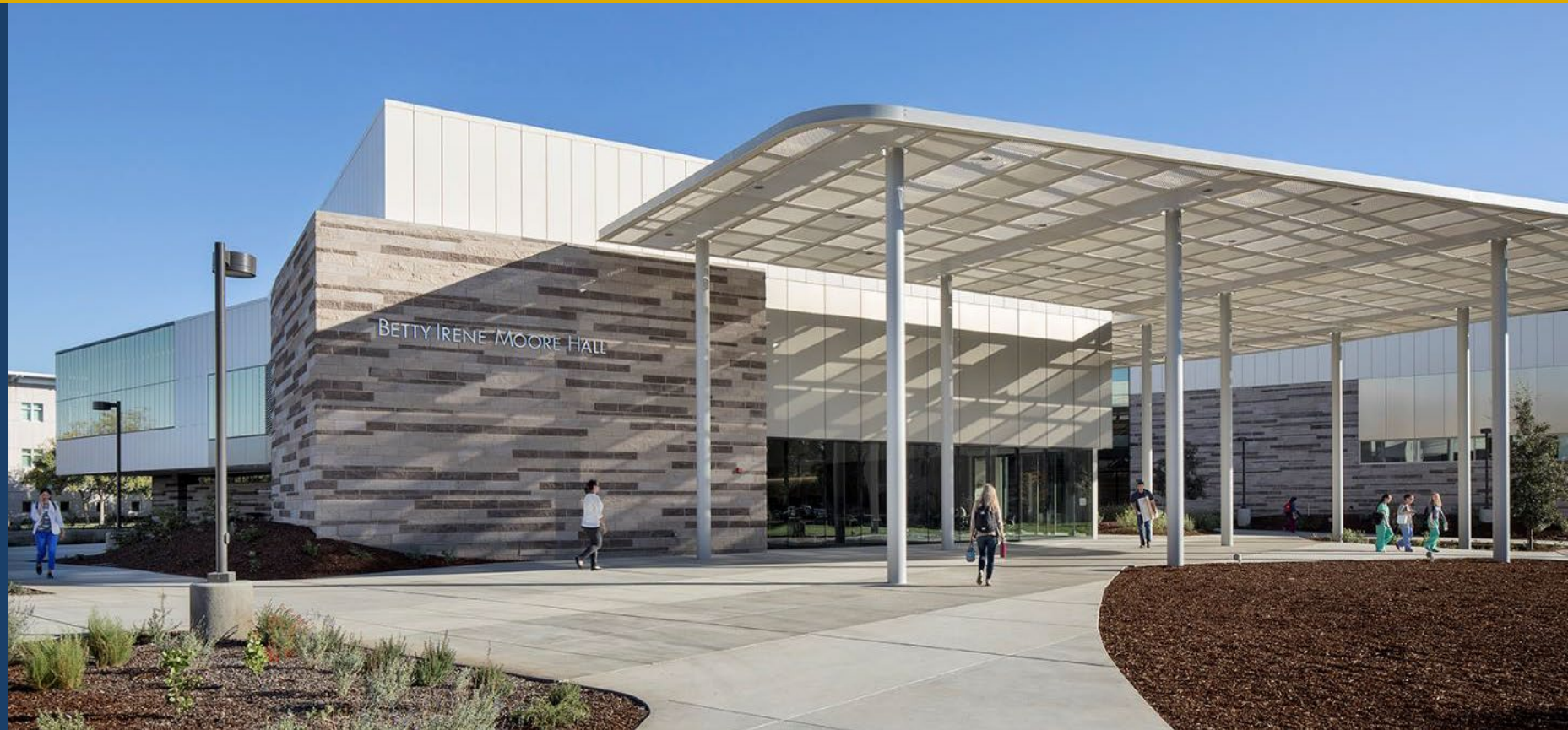




Keeping Older Adults Safe in the COVID-19 Pandemic

BETTY IRENE MOORE SCHOOL OF NURSING

Deb Bakerjian PhD, APRN, FAAN, FAANP, FGSA
Clinical Professor
Betty Irene Moore SON
University of CA, Davis





Agenda

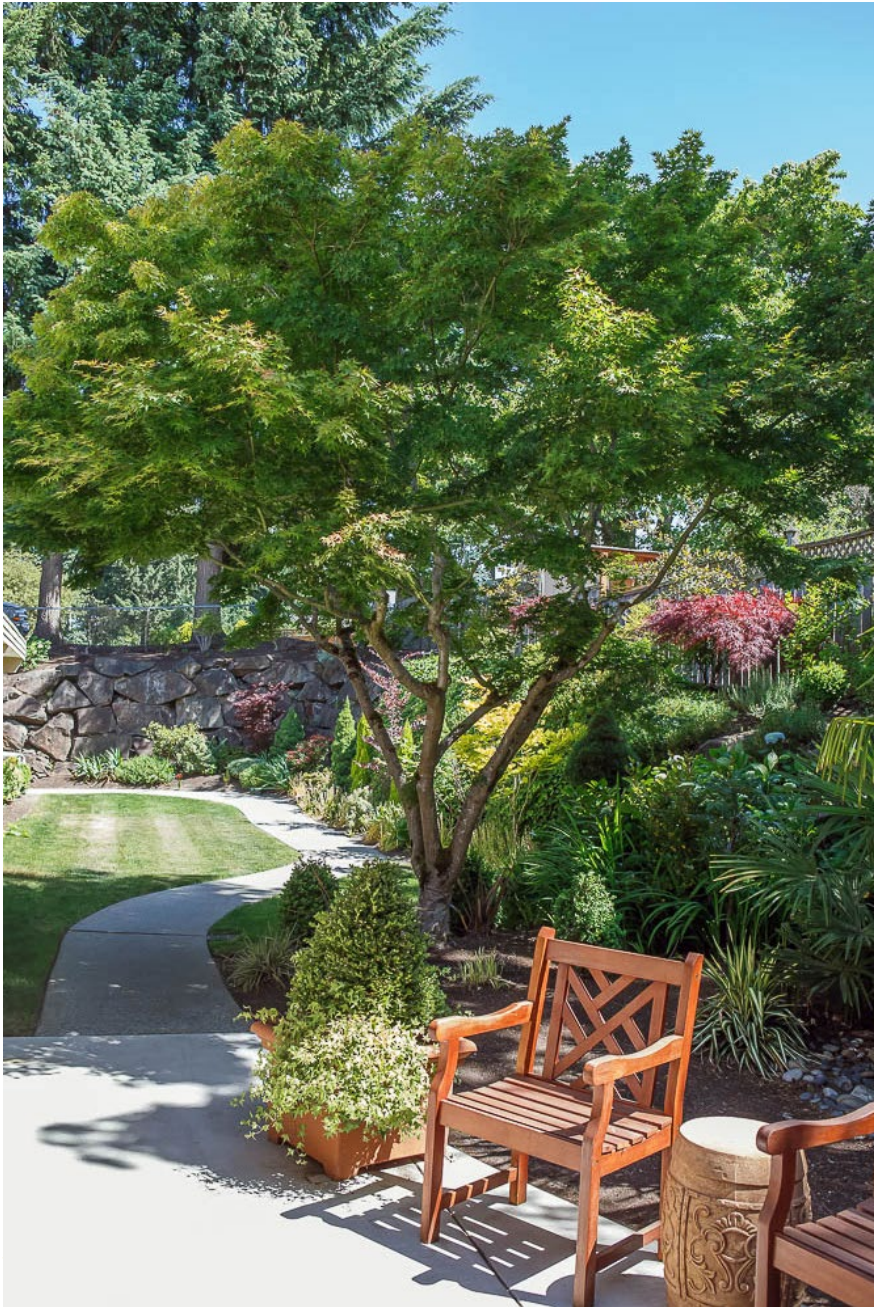
- Discuss why did nursing homes have so many COVID-19 cases and deaths?



Nice covered
entryway



Fabulous Patio



Feels like a tropical garden

A photograph of a residential yard. In the foreground, a large, leafy tree stands on the left. Behind it, a stone retaining wall separates a flower bed with white and red flowers from a putting green. The putting green is a vibrant green, and two golf tees are visible. In the background, a house with large windows and a light-colored exterior is visible. The sky is bright and clear.

Golf anyone?



Well kept outside

CMS EXTERNAL REVIEW

- An overall CMS 5-Star skilled nursing facility
- 5-Star quality measures
- 4-Star staffing
- 3-Star health inspections

"Like so many things,
it is not what's outside, but
what is inside that counts."

MERCHANT
ALADDIN



It's not what is
outside that
matters...

That facility we just visited is Life Care Center of Kirkland, Washington

- People were getting sick
- 2 residents died Feb 26th
- COVID-19 spread quickly
- Life Care failed to notify state about large numbers of respiratory infections
- Staff were confused
- They were UNPREPARED
- And so was the government -



The New York Times

Coronavirus Outbreak >

LIVE

Latest Updates

Maps and Tracker

Lingering Symptoms

Life at Home

Newsletter

Nursing Home Linked to 37 Coronavirus Deaths Faces Fine of \$600,000

Federal and Washington State officials found failures at Life Care Center of Kirkland during the coronavirus outbreak that spread through the facility.













How and Why did this Happen?

By the Numbers as of May 11, 2020

- Nursing homes account for a staggering percentage of COVID-19 cases and deaths*
 - 43 states reporting LTC data
 - 6,139 NHs reporting COVID cases (15,600 NHs in U.S.)
 - 128,098 cases in LTC in 37 states (1,344,512 in U.S.)
 - 24,974 LTC deaths out of 80,087 total U.S. deaths
- 9% of overall cases but 39% of deaths



California Numbers

- California 5th highest numbers overall
 - 68,009 cases
 - 2719 deaths
 - 4,538 hospitalized
- Fatality rates average 6% overall (range 0.9-10.5%)
- California fatality rate 4%
 - Michigan 9.6% of 47,552 cases
 - Connecticut 8.9% of 33,765 cases
 - **New York 7.9% of 337,055 cases**
 - New Jersey 6.7% of 140,206 cases



COVID-19: Daily Trends

KFF

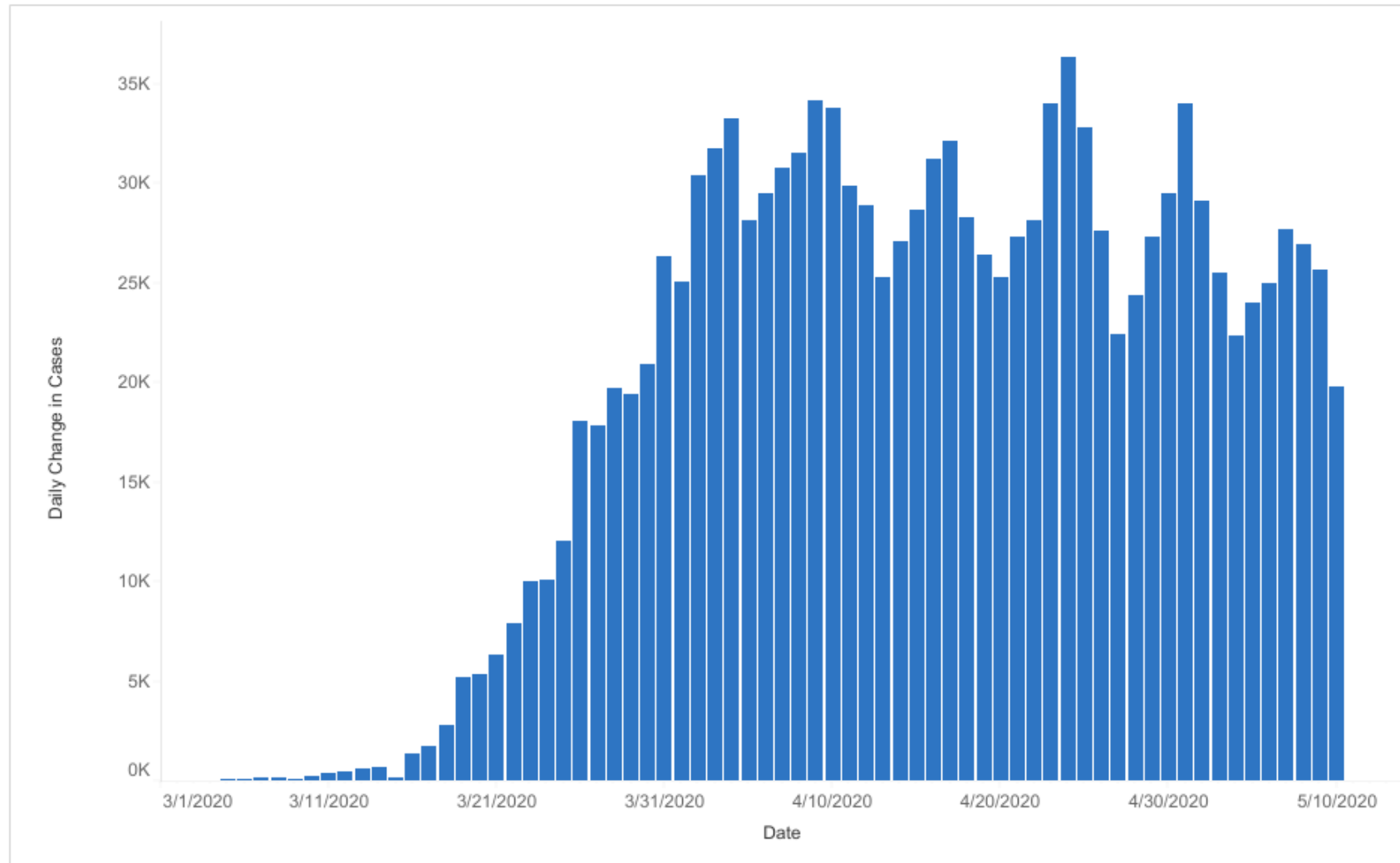
Overview

Cumulative Trends

Daily Trends

Data Table

Demographics



Select Cases/Deaths
Daily Change in Cases

Select Date Range
3/1/2020 to 5/10/2020
and Null values

Select State
All



COVID-19: Daily Trends

KFF

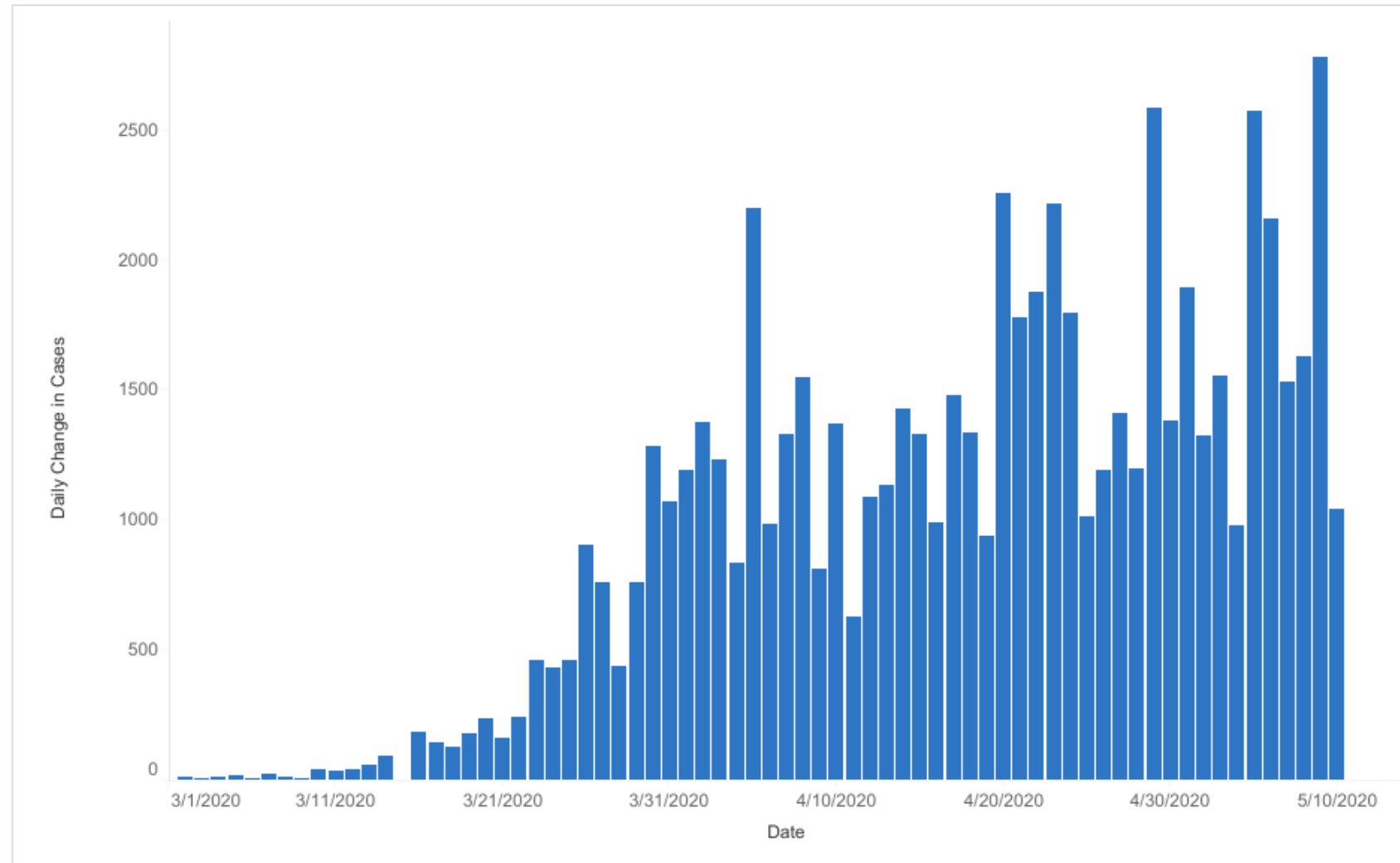
Overview

Cumulative Trends

Daily Trends

Data Table

Demographics



Select Cases/Deaths
Daily Change in Cases

Select Date Range
All values

Select State

- ☐ Alabama
- ☐ Alaska
- ☐ Arizona
- ☐ Arkansas
- ☒ California
- ☐ Colorado
- ☐ Connecticut
- ☐ Delaware
- ☐ District of Columbia
- ☐ Florida
- ☐ Georgia
- ☐ Guam
- ☐ Hawaii
- ☐ Idaho
- ☐ Illinois
- ☐ Indiana
- ☐ Iowa
- ☐ Kansas
- ☐ Kentucky
- ☐ Louisiana
- ☐ Maine
- ☐ Maryland
- ☐ Massachusetts
- ☐ Michigan



The PROBLEMS

Congregate Living



Violations of Infection-Control and Prevention Guidelines

- 1) The facility failed to utilize impervious Personal Protective Equipment in order to prevent cross contamination.
- 2) The soiled utility room had a broken handwash sink knobs and there was no soap and no sanitizer.

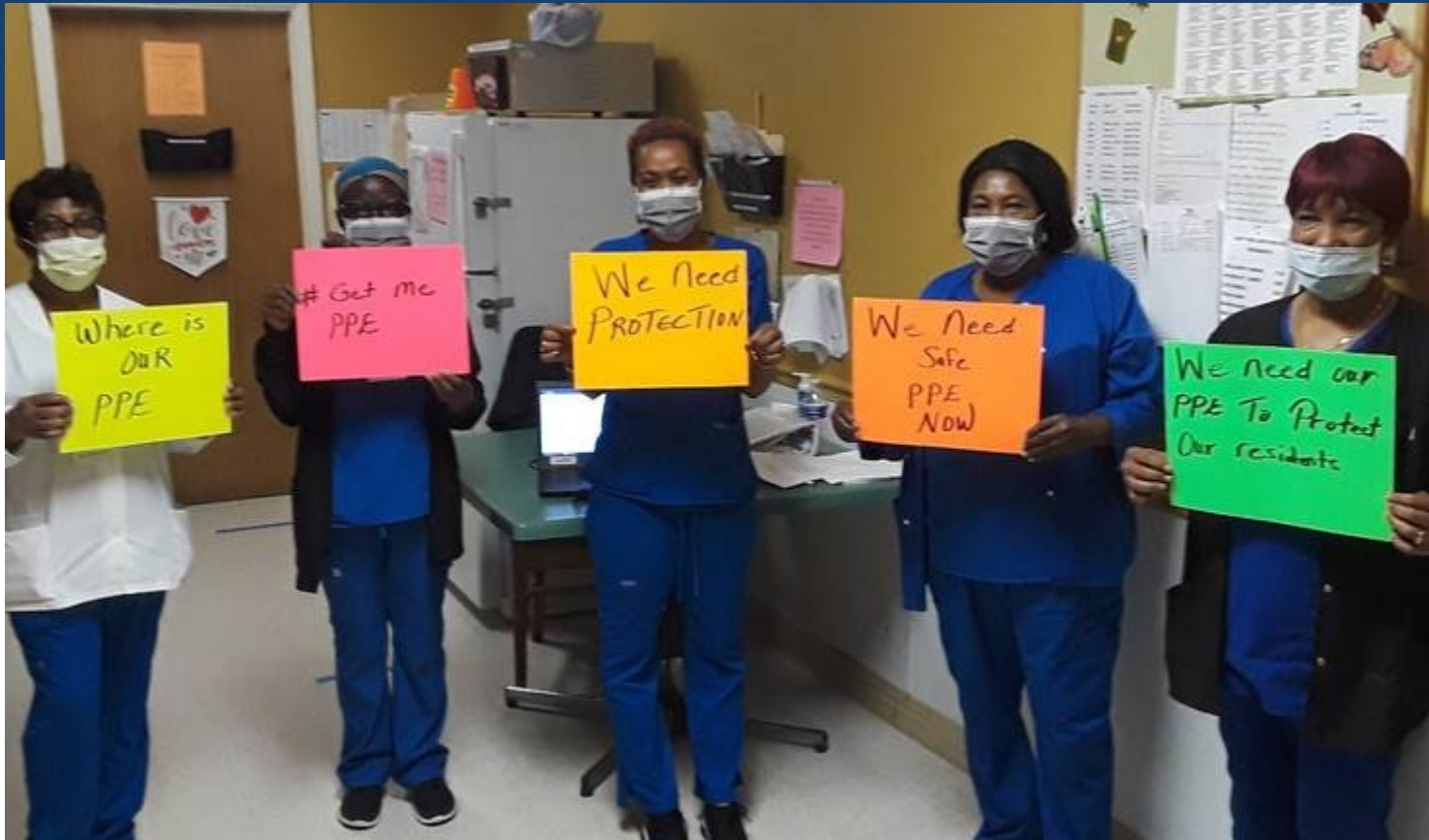
§483.80(a) Infection prevention and control program.

infection
to provide a safe,
to help prevent
communicable

vention and
clude, at a
s:

identifying,
infections
ents, staff,
providing
ased upon
ording to
accepted national standards;

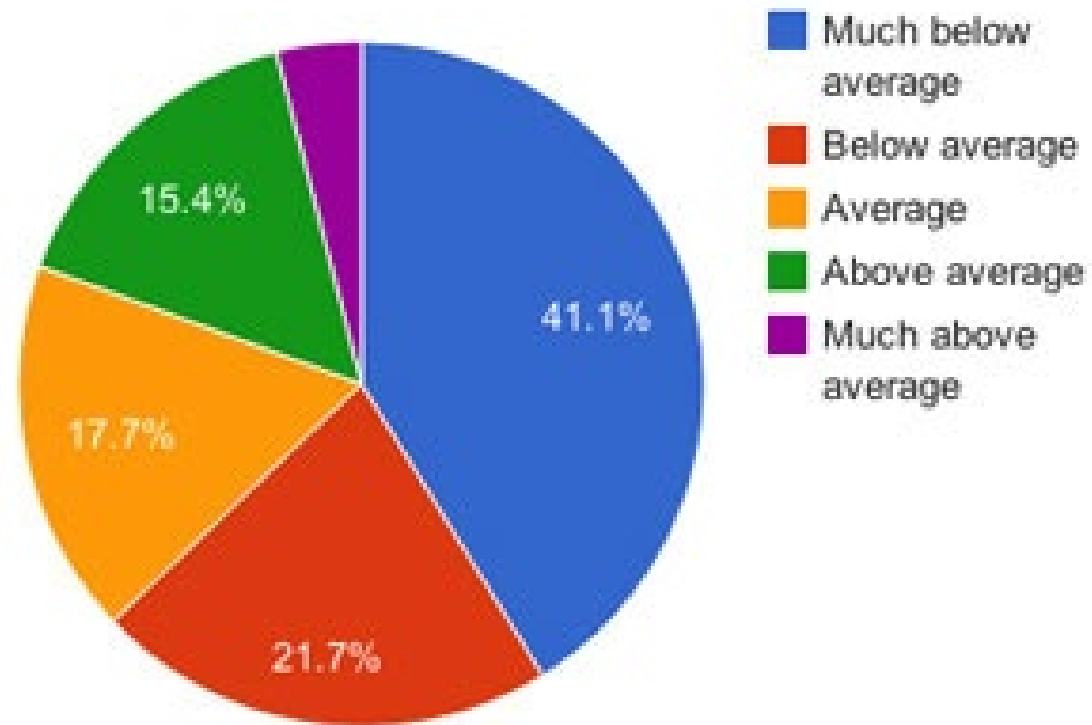
Infection-Control FAILURES



Nursing Home Vulnerabilities Enabling COVID-19 Spread

- Lack of adequate personal protective equipment (PPE)
- Lack of knowledge and adherence to appropriate use of PPE
- Inconsistent hand hygiene, lack of hand hygiene stations
- Challenges in isolating people in congregate living
- Poor tracking of infections

Quality of Staffing in New York City's Nursing Homes

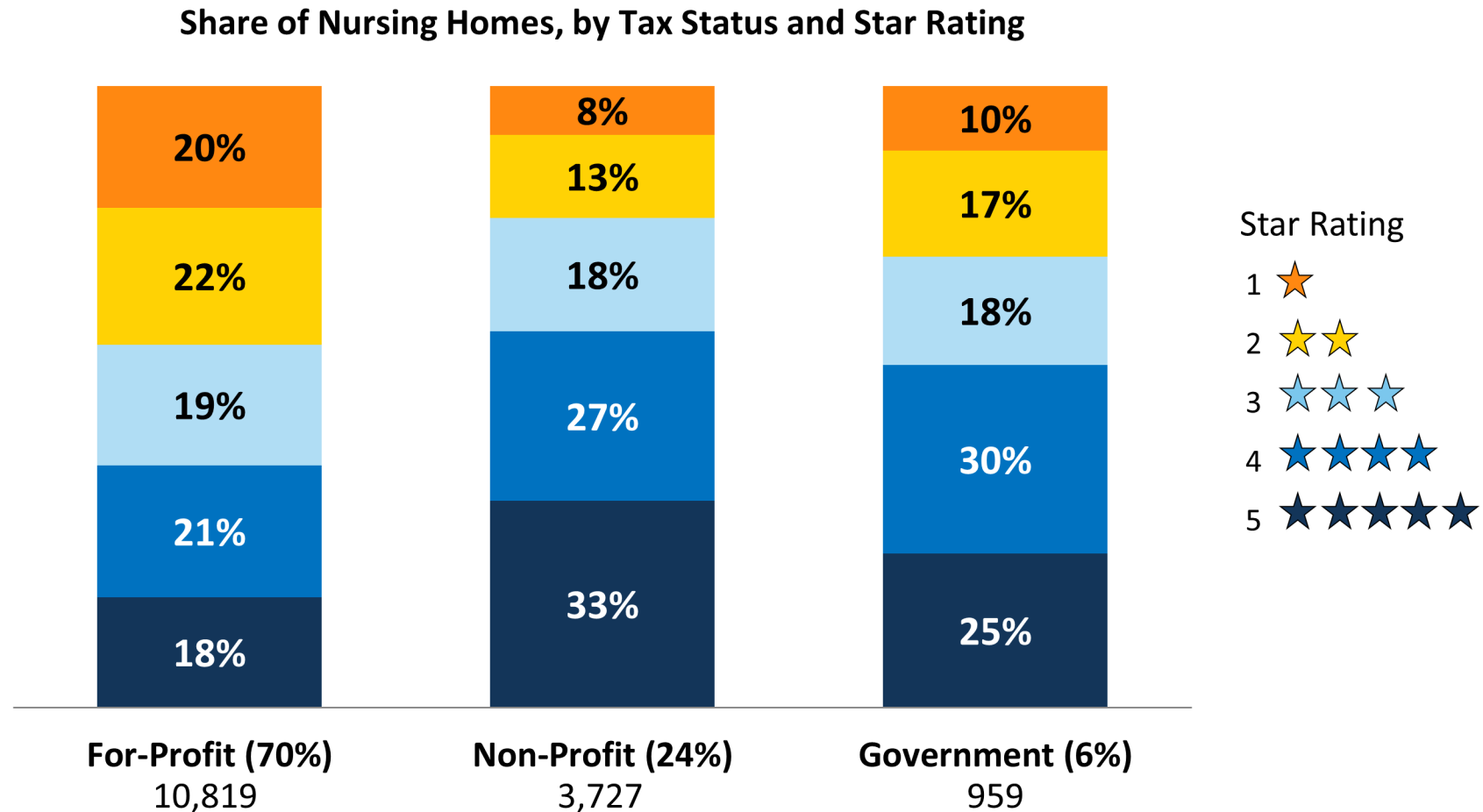


Lack of Staff

- Inadequate staffing
- Staff working in multiple facilities
- High staff turnover
- Staff working while ill

Figure 4

For-profit nursing homes, which are much more prevalent, tend to have lower overall star ratings than non-profit nursing homes



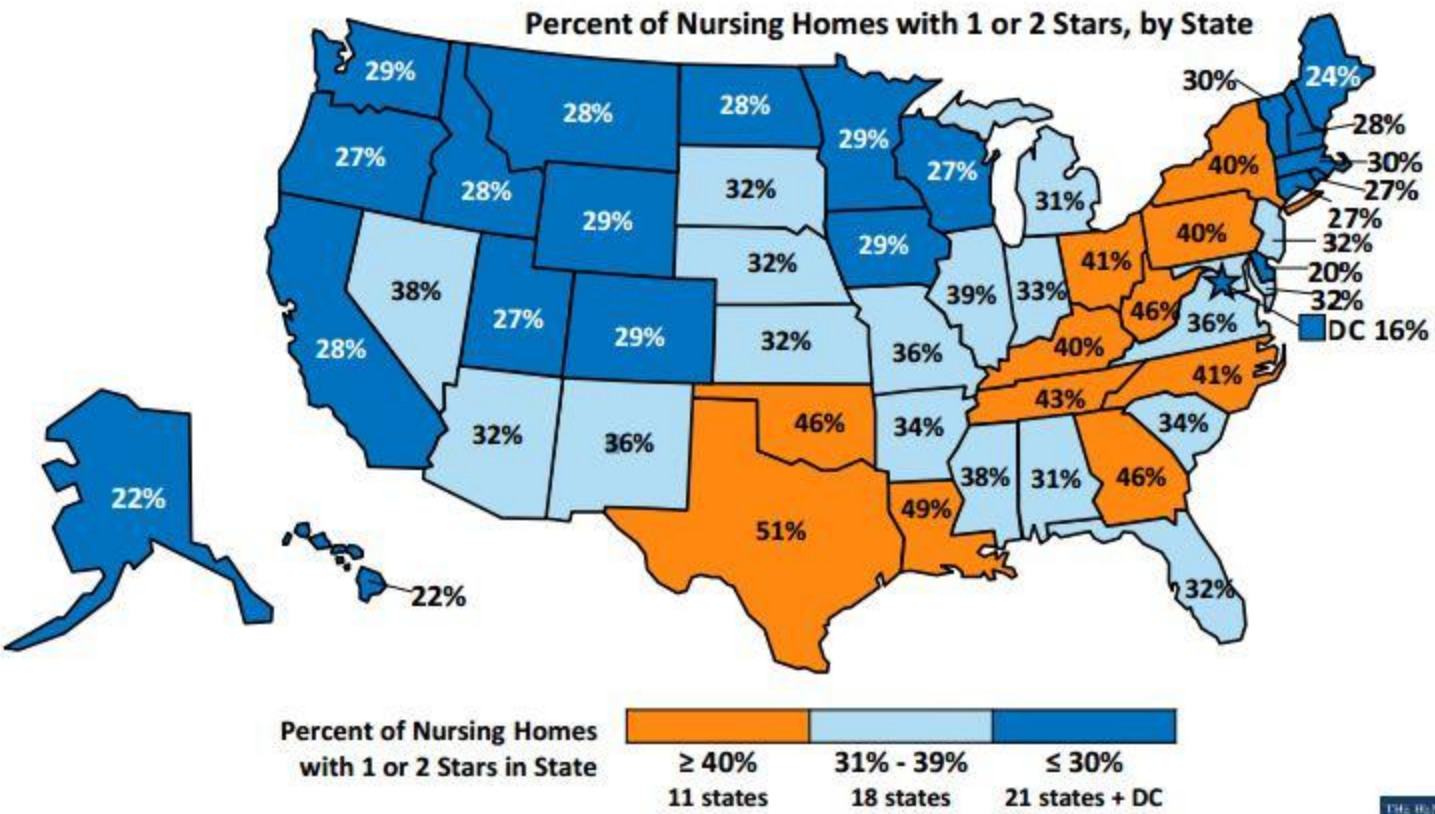
NOTE: Analysis is based on the overall composite star rating score for nursing homes. Analysis includes only nursing homes certified by either Medicare or Medicaid and excludes nursing homes with unavailable star ratings.

SOURCE: Kaiser Family Foundation analysis of Nursing Home Compare data, February 2015



Figure 8

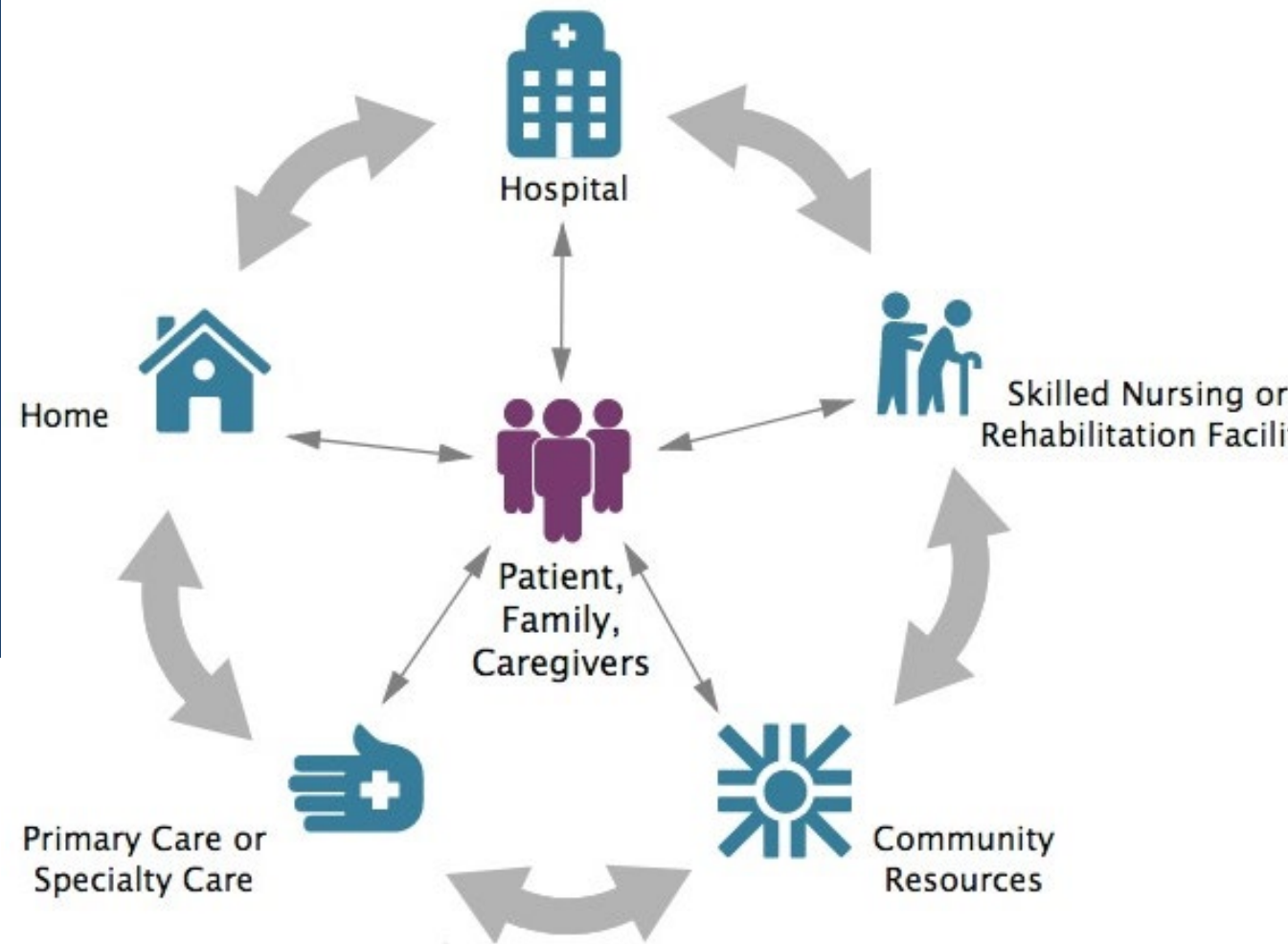
In 11 states, at least 40% of nursing homes have relatively low overall ratings (either 1 or 2 stars)



NOTE: Analysis is based on the overall composite star rating and includes only nursing homes certified by either Medicare or Medicaid.
SOURCE: Kaiser Family Foundation analysis of Nursing Home Compare data, February 2015



Transitions of Care



New York Post Opinion By Michael Goodwin

The letter was heartbreaking as it recounted the death of an 88-year-old woman in a New York nursing home. Her daughter, Arlene Mullin, recounted the mistaken policies that contributed to her mother's death.

"I am wondering who will hold Gov. Cuomo accountable for the deaths of so many older people due to his reckless decision to place covid19 patients in nursing and rehabilitation homes," the letter began. "I am writing as a daughter who lost her beautiful 88 year old mother who was receiving physical therapy at one such facility."





THE CORONAVIRUS CRISIS

Discharging COVID-19 Patients To Nursing Homes Called A 'Recipe For Disaster'

April 20, 2020 · 5:00 AM ET
Heard on [Morning Edition](#)

INA JAFFE

Via **Cisco** Webex
Thousand Oaks, CA
10:48 AM PT

CORONAVIRUS PANDEMIC
L.A. COUNTY PUBLIC HEALTH DIRECTOR: "PERFECTLY APPROPRIATE" TO PULL LOVED ONES FROM NURSING HOMES

CORONAVIRUS PANDEMIC

CORONAVIRUS PANDEMIC

GLOBALLY

TOTAL CASES
1,464,852

DEATHS
85,397

IN THE UNITED STATES

TOTAL CASES
402,923

DEATHS
13,007

SOURCE: JOHNS HOPKINS UNIVERSITY

CNN
NAS ▲ 133.03

NEWSROOM

... Also, it won't even help overcrowded hospitals, says Dr. Michael Wasserman, who heads the California Association of Long-Term Care Medicine.

"If you push folks out of the hospitals to make space and you push them into nursing homes a couple weeks later," Wasserman says, "for every one of those you send to the nursing home, you may get 20 back in the hospital."



Telehealth and Telemedicine

Risks from Outside People

- Physicians, nurse practitioners, and other provider visits increase risk for transmission
- NHs were only allowed telehealth visits in rural areas
- Recent changes in regulations now allow telehealth in all NHs



Coronavirus Disease 2019 (COVID-19)

Responding to Coronavirus (COVID-19) in Nursing Homes

Considerations for the Public Health Response to COVID-19 in Nursing Homes

Related Pages

[Key Strategies for Long-term Care Facilities](#)

[Responding to Coronavirus \(COVID-19\) in Nursing Homes](#)

[Testing for Coronavirus \(COVID-19\) in Nursing Homes](#)

[Infection Prevention and Control Assessment Tool for Nursing Homes Preparing for COVID-19](#)

COVID-19 Events Highlight Long-standing Problems in NHs

Medicare.gov | **Nursing Home Compare**
The Official U.S. Government Site for Medicare

[Nursing Home Compare Home](#) [About Nursing Home Compare](#) [About the data](#) [Resources](#) [Help](#)

Home

Find a nursing home

Nursing Home Compare has detailed information about every **Medicare** and **Medicaid**-certified nursing home in the country. A nursing home is a place for people who can't be cared for at home and need 24-hour nursing care.

Search below to find nursing homes based on a location and compare the quality of care they provide and their staffing.

A field with an asterisk (*) is required.

* **Location**
Example: 45802 or Lima, OH or Ohio

ZIP code or City, State or State

Nursing home name (optional)

Full or partial nursing home name

Search



NHC Special Focus Facility ICON



If a nursing home has a history of persistent poor quality of care, as indicated by the findings of state or federal inspection teams, it can be considered a Special Focus Facility (SFF). This means that the facility is subjected to more frequent inspections, escalating penalties, and potential termination from Medicare and Medicaid.

<https://www.medicare.gov/nursinghomecompare/search.html?>



General information		Health & fire-safety inspections		Staffing		Quality measures		Penalties	
				x		x		x	
		NURSING HOME A 123 MAIN ST ANYWHERE, ST 12345 (555) 555-5555		NURSING HOME B 123 MAIN ST ANYWHERE, ST 12345 (555) 555-5555		NURSING HOME C 123 MAIN ST ANYWHERE, ST 12345 (555) 555-5555			
		Distance ⓘ: 2.6 miles Add to my Favorites Map and Directions		Distance ⓘ: 3.6 miles Add to my Favorites Map and Directions		Distance ⓘ: 4.2 miles Add to my Favorites Map and Directions			
Overall Rating ⓘ		☆☆☆☆●		☆☆☆☆●		☆☆☆☆●			
Staffing ⓘ		☆☆☆☆●		☆☆☆☆●		☆☆☆☆●			
RN Staff Only ⓘ		☆☆☆☆●		☆☆☆☆●		☆☆☆☆●			
	NURSING HOME A	NURSING HOME B	NURSING HOME C	STATE AVERAGE	NATIONAL AVERAGE				
Total Number of Residents	236	223	74	166.7	87.5				
Total number of licensed nurse staff hours per resident per day	1 hour and 47 minutes	1 hour and 39 minutes	2 hours and 37 minutes	1 hour and 35 minutes	1 hour and 39 minutes				
RN Hours per Resident per Day	35 minutes	32 minutes	1 hour and 41 minutes	44 minutes	49 minutes				
LPN/LVN Hours per Resident per Day	1 hour and 11 minutes	1 hour and 8 minutes	56 minutes	50 minutes	50 minutes				
CNA Hours per Resident per Day	2 hours and 22 minutes	2 hours and 45 minutes	3 hours and 58 minutes	2 hours and 23 minutes	2 hours and 28 minutes				
Physical Therapy Staff Hours per Resident per Day	4 minutes	6 minutes	14 minutes	7 minutes	6 minutes				
How to Read Staffing Chart About Staff Roles									



But recall that Life Care Center of Kirkland, WA was a CMS 5-star facility

Not a perfect system

Long History of Infection Control Problems

The NM Political Report | (<https://nmpoliticalreport.com/2020/05/05/most-nursing-homes-violate-infection-control-standards/>)

QUICK READS

Most nursing homes violate infection control standards

By Ed Williams, Searchlight New Mexico



The Washington Post

Coronavirus

Live updates

U.S. map

World map

Reopening tracker

Lives lost

Your life at home

Your money

Business

Hundreds of nursing homes with cases of coronavirus have violated federal infection-control rules in recent years

Of about 650 homes with publicly reported coronavirus cases, 40 percent have been cited more than once with violations related to infection control, a Post analysis found



So Who is Responsible & What Do We Do?



Structures and Policies in NHs

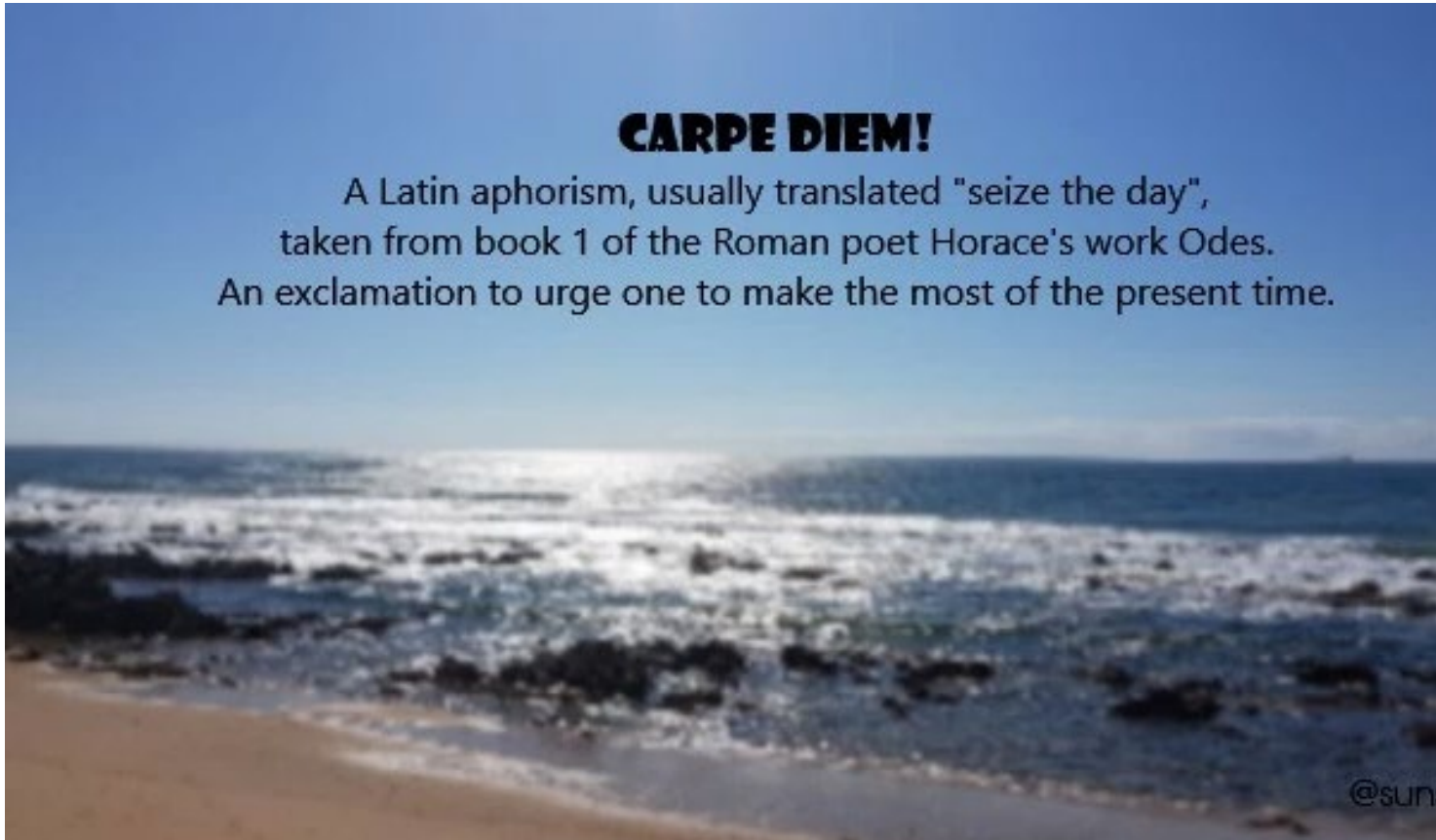
- NH funding has recently changed to focus more on quality
- Too many are “for profit” NHs some that do not reinvest in quality
 - Some are multi-chain
 - Owned by private equity or real estate moguls
 - Real estate can be separated structurally from operations
 - Operations run by a management company
 - Allows for multiple “owner” stakeholders
- In 2007 - nation’s largest nursing home chain, HCR Manor Care, by the private equity firm the Carlyle Group
- Staffing and quality of care reports are mixed
 - Staffing has decreased in many of these homes
 - Some states have not seen drops in quality





CARPE DIEM!

A Latin aphorism, usually translated "seize the day",
taken from book 1 of the Roman poet Horace's work Odes.
An exclamation to urge one to make the most of the present time.



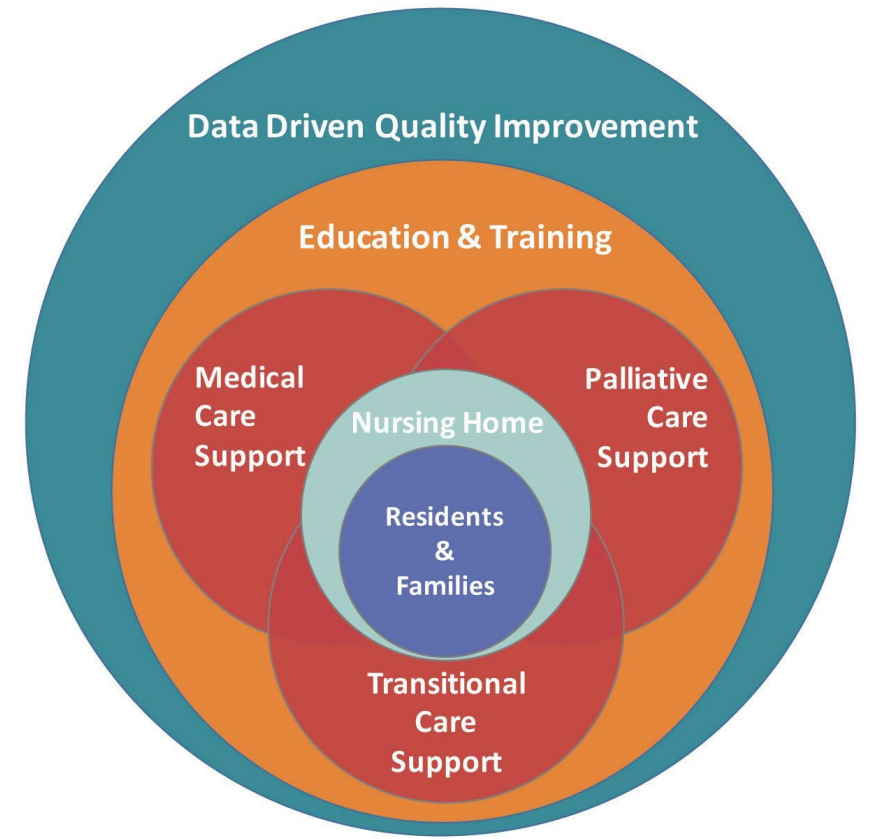
Time to Seize the Day

- COVID-19 the stimulus to overhaul nursing homes
- Policy leaders join clinicians, academics, and researchers to restructure the system
- Require Directors of Nurses to have BSN & leadership training
- Incentivize higher education
- Require at least 250 hours of training for CNAs
- Society needs to fund it
- Abandon our punitive surveyor system designed only to "find mistakes & punish"

We Can and Should Do BETTER



- Let's take advantage of the tragedies we have seen in the COVID-19 Pandemic
- Let's improve and integrate overall care
- Let's change the NH environment and regulatory policies to enhance high quality & safe care





Thank you!

A graphic featuring the words "Thank you!" in a black, cursive script font. The text is surrounded by several gold-colored stars of varying sizes. Below the text is a thick, gold-colored swoosh that curves under the words.