

Mirador Capital Partners

925-621-1000

www.miradorcp.com



**Don Garman, CFP®
CIMA® AIF®**
Founder and CIO



**Lauren Moone,
CFA® CFP®**
Executive VP



**Carol Wikle, CFP®
CIMA® CRPC®**
Principal



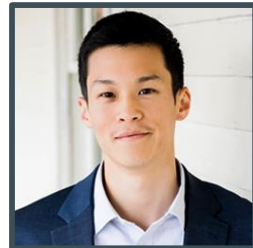
Dan Murray
Principal



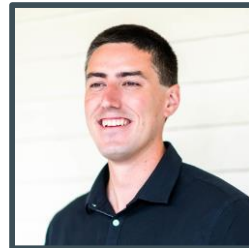
Joseph Garcia
First VP



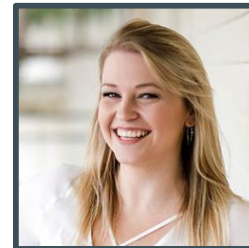
**Audrey Glafkides,
CFP®**
COO



Jonathan Ting
Director of Research
and Co-Portfolio
Manager



Daniel Potts
Associate VP
Marketing



Jessica Standlee
Client Service
Manager



Sean Cook
Client Service and
Investment
Associate



Mariaha Saldana
Client Service
Associate

Nothing herein constitutes investment advice, performance data or any recommendation that any particular security, portfolio of securities, transaction or investment strategy is suitable for any specific person. Investments in securities involve the risk of loss. Past performance is no guarantee of future results.

Mirador Capital Partners

As the Tri-Valley's premier investment management firm, we are actively engaged in our investments, clients and community.

We offer...

A BROAD SET OF SERVICES

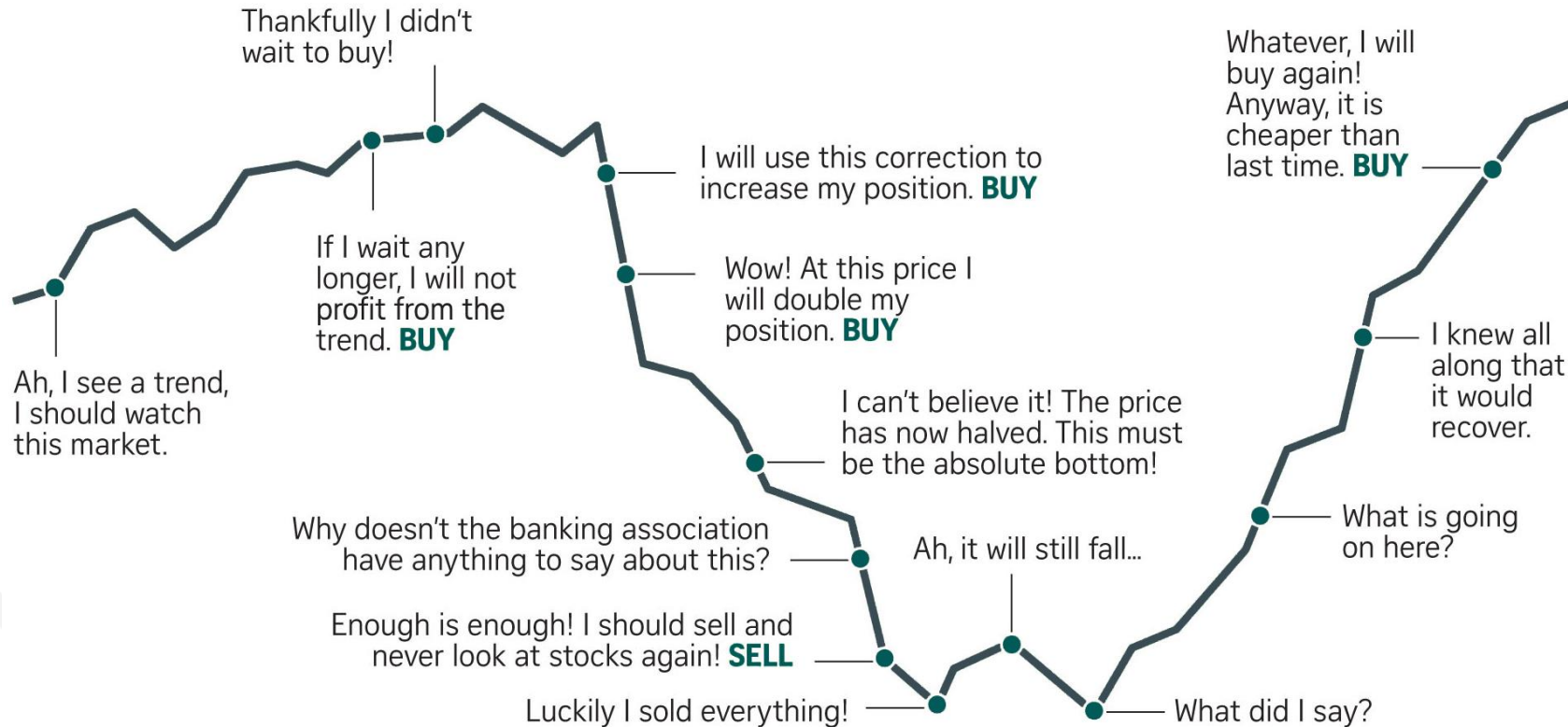
Asset Allocation	Tax & Estate Planning
Retirement Planning	Tax Efficiency
Securities Selection	Socially Responsible Investing
Cash Flow Analysis	Intergenerational Wealth Transfer
Philanthropic Planning	Education Funding
Stock Option Planning	Insurance Analysis

AND UNIQUE CAPABILITIES

Active Investment Management	Employer Stock Option Optimization
Concentrated Equity Strategies	Wealth Transfer Strategies
Pre-Liquidity Planning	Values-Aligned Investment Strategies

Nothing herein constitutes investment advice, performance data or any recommendation that any particular security, portfolio of securities, transaction or investment strategy is suitable for any specific person. Investments in securities involve the risk of loss. Past performance is no guarantee of future results.

Managing Emotions



Nothing herein constitutes investment advice, performance data or any recommendation that any particular security, portfolio of securities, transaction or investment strategy is suitable for any specific person. Investments in securities involve the risk of loss. Past performance is no guarantee of future results.

Historical Perspective

Dates of S&P's biggest declines	Black Monday 8/25/87- 12/4/87	Gulf War 7/16/90- 10/11/90	Asia Monetary Crisis 7/17/98- 8/31/98	Tech Bubble 3/27/00- 10/9/02	Financial Crisis 10/9/07- 3/9/09	US Credit Downgrade 3/10/11- 10/3/11	Trade War 10/3/18- 12/24/18
U.S. stocks	-33.5%	-19.9%	-19.3%	-49.0%	-56.8%	-19.0%	-19.6%
Next 12 months	+21.4%	+29.1%	+37.9%	+33.7%	+68.6%	+32.0%	+37.1%

Source: Morningstar as of 2/28/20. Returns are principal only not including dividends. U.S. stocks represented by the S&P 500 Index. Past performance does not guarantee or indicate future results. Index performance is for illustrative purposes only. You can't invest directly in an index..

Nothing herein constitutes investment advice, performance data or any recommendation that any particular security, portfolio of securities, transaction or investment strategy is suitable for any specific person. Investments in securities involve the risk of loss. Past performance is no guarantee of future results.