



South Bay Salt Pond Restoration Project

Restoring the Wild Heart of the South Bay



April 2008



September 2009



May 2010



October 2010

SALT POND A21 SOUTH BAY SALT POND RESTORATION PROJECT

Kite aerial photographs of a small channel in the northeast corner following the 2006 breach to tidal flow. Field of view is ~ 120 feet. . C. Benton

Castro Valley Rotary Club – April 7, 2020
Dave Halsing, Executive Project Manager



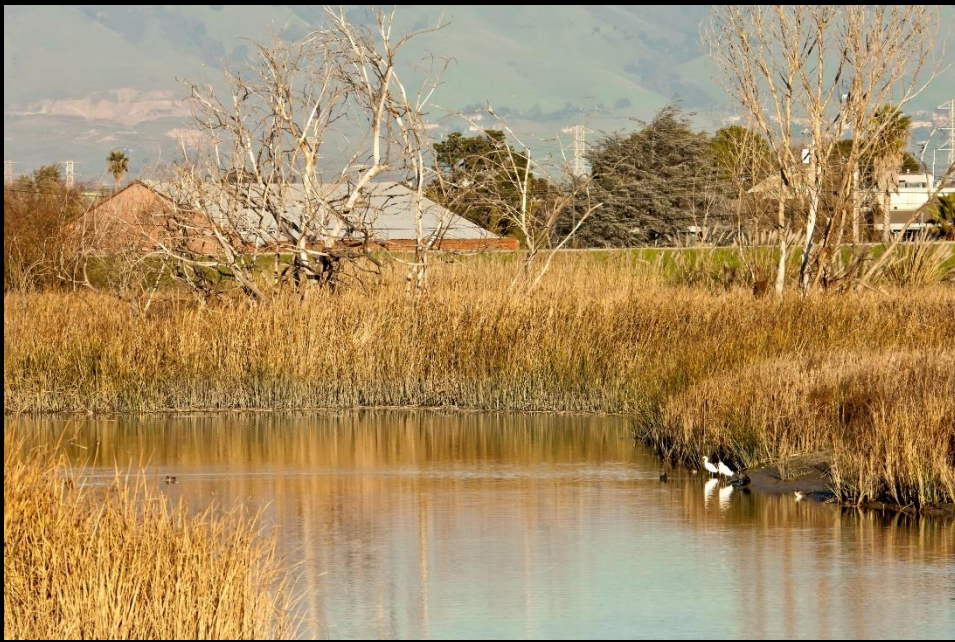
Callie Bowdish



South Bay Salt Pond Restoration Project

Restoring the Wild Heart of the South Bay





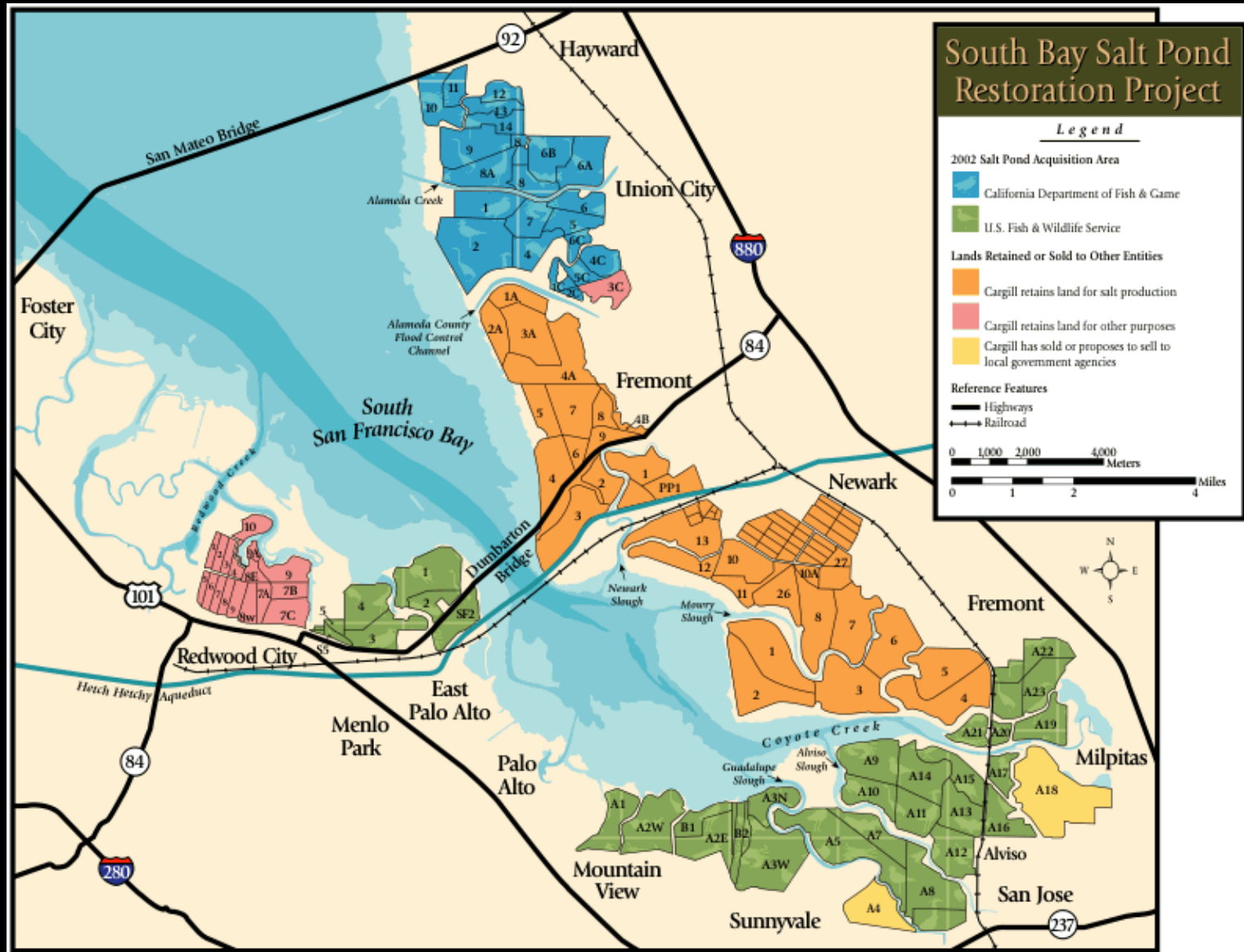


Project History

- 2003 Transfer from Cargill to Federal and State agencies
- Public and private funds for purchase
- Cargill donated a portion
- 16,500 acres total
- 15,100 acres in South Bay



Project Sites

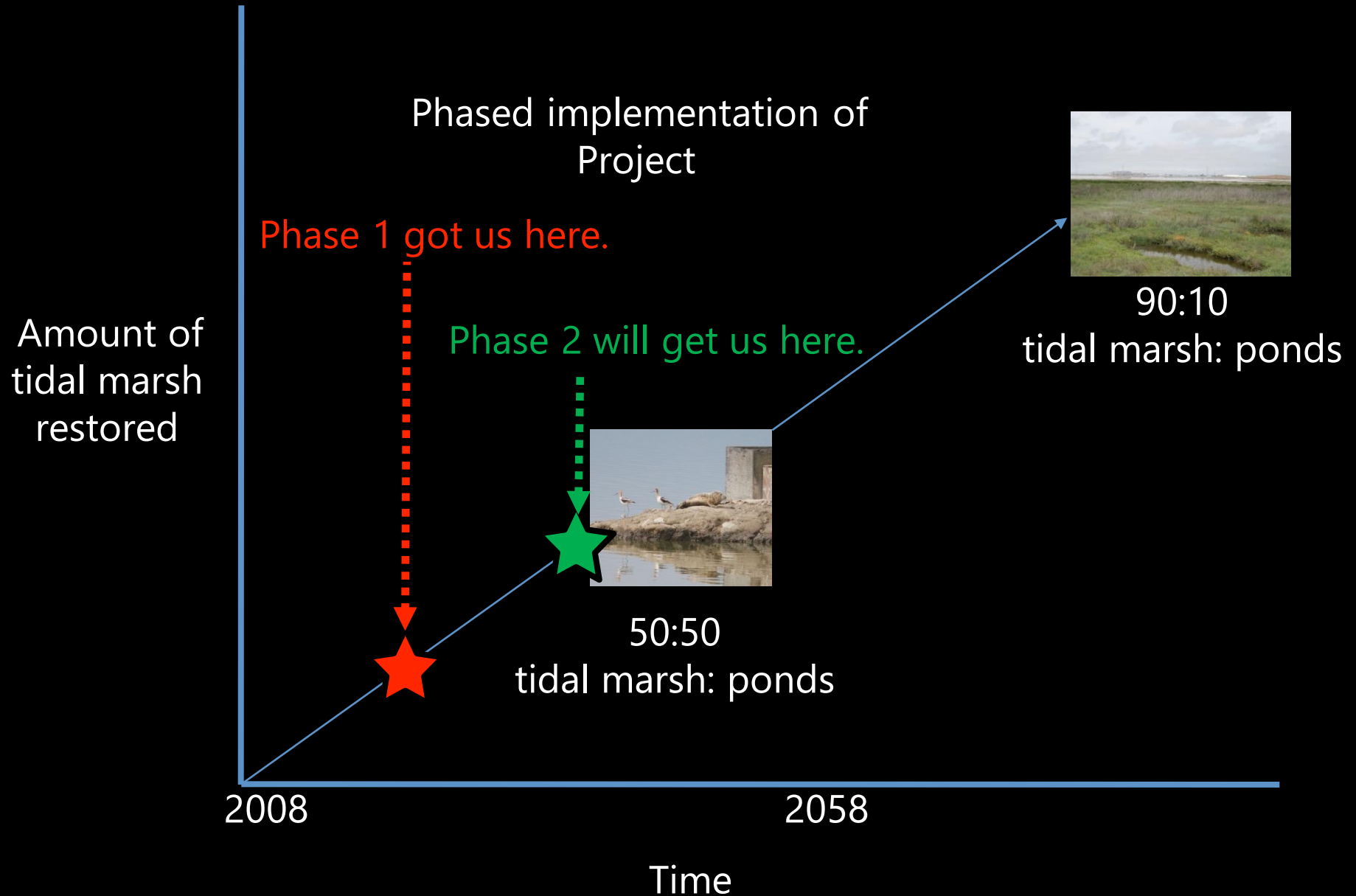


Ecological Trade-offs

Tidal marsh species vs. salt pond species



Adaptive Management Restoration

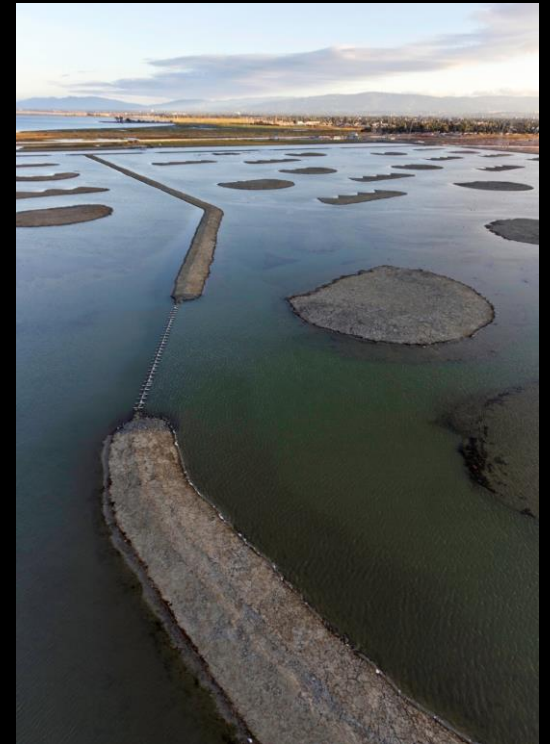


Looking Back at Phase 1





**3,000 acres
of tidal &
muted tidal
restoration;
700 acres
enhanced
managed
ponds**



Public Access
7 miles of new trails
Levee-top
Boardwalk
Viewing platforms
Kayak launch





Looking Ahead



Our Phase 2 Projects





South Bay Salt Pond Restoration Project

Restoring the Wild Heart of the South Bay

2002 Salt Pond Acquisition Area

California Department of Fish & Game

U.S. Fish & Wildlife Service

Lands Retained or Sold to Other Entities

Cargill retains land for salt production

Cargill retains land for other purposes

Cargill has sold or proposes to sell to local government agencies

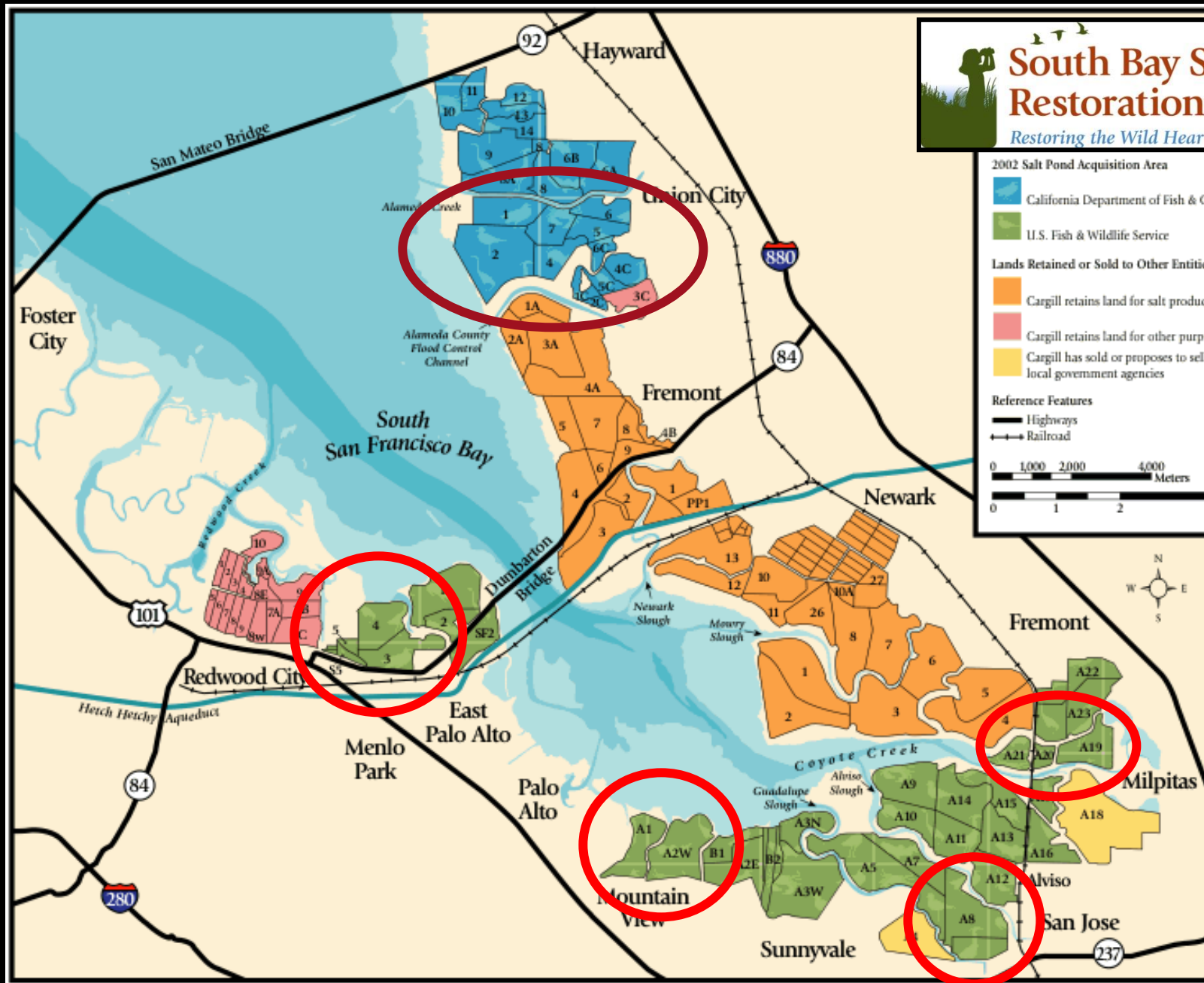
Reference Features

Highways

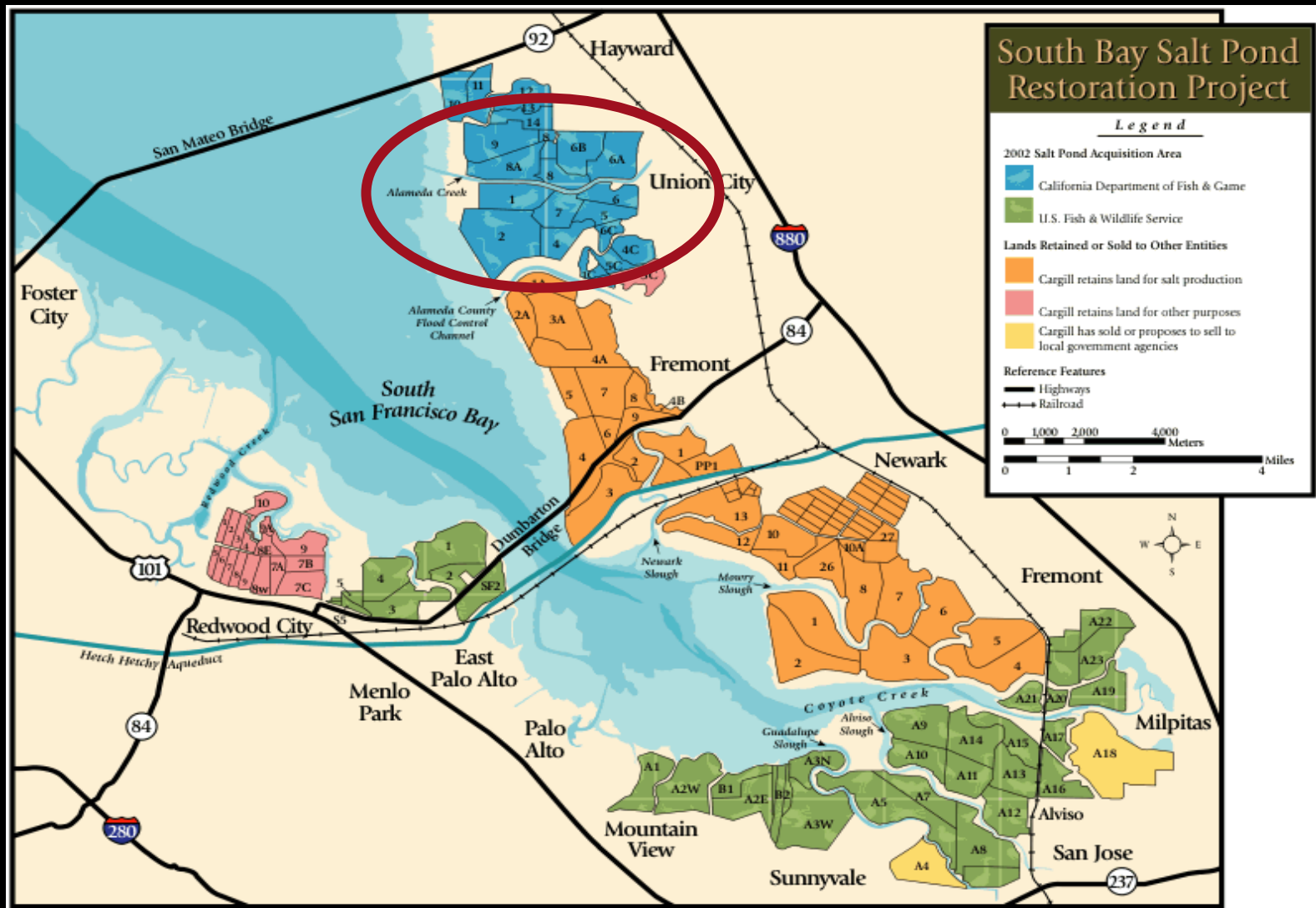
Railroad

0 1,000 2,000 4,000 Meters

0 1 2 4 Miles



Phase 2 at Eden Landing



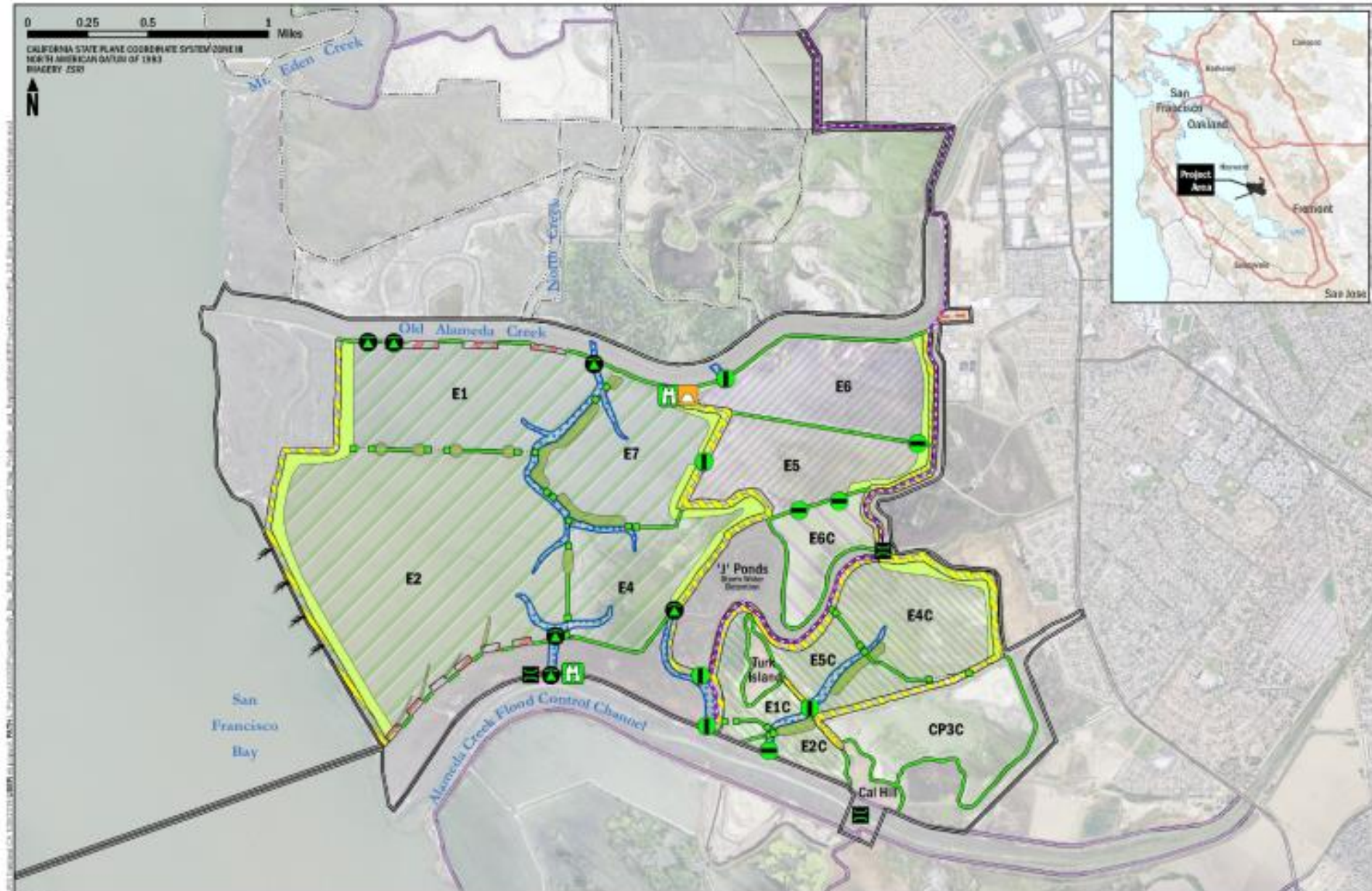
Phase 2 at Eden Landing



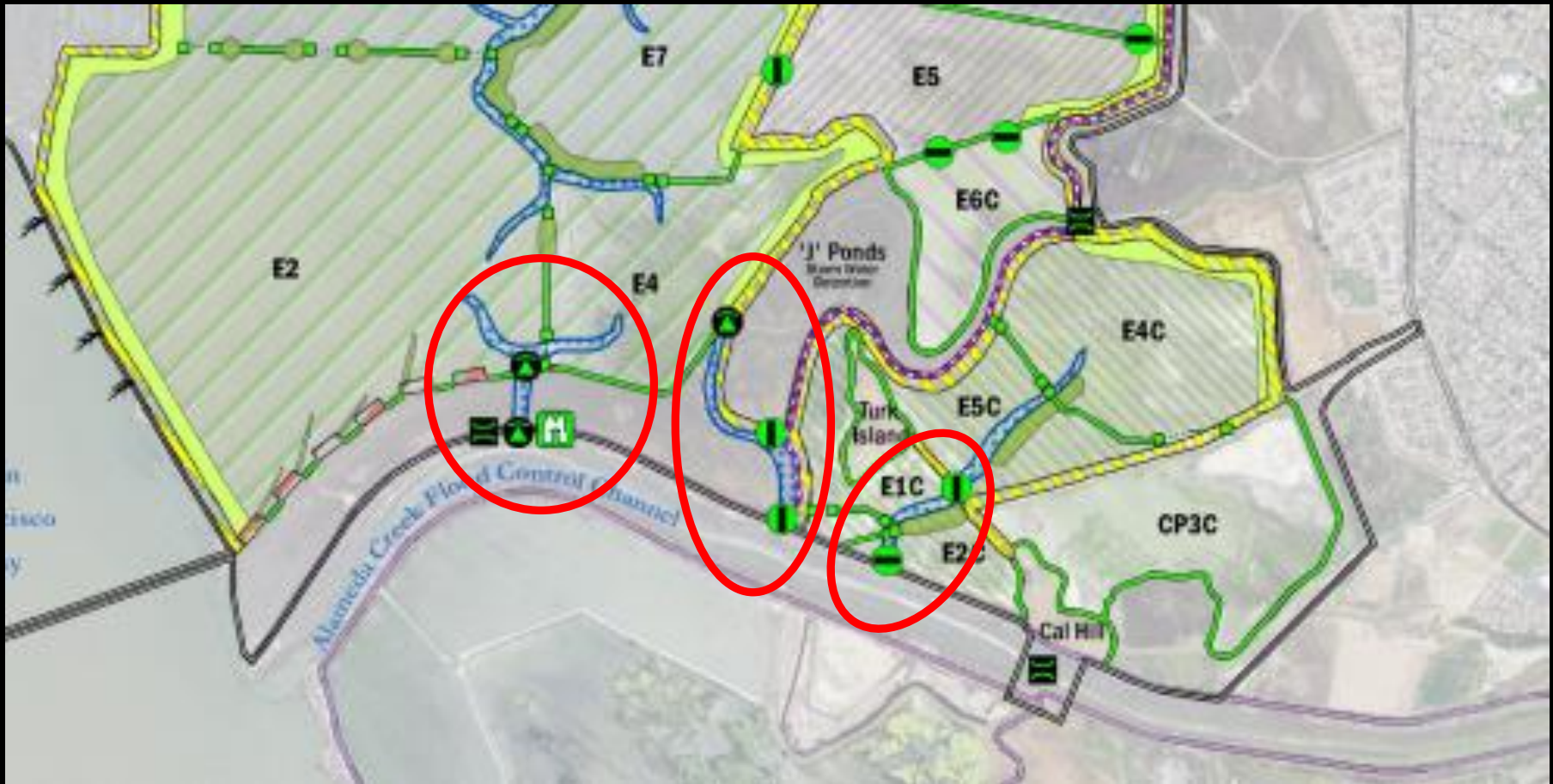
Phase 2 at Eden Landing

- **All of southern Eden Landing**
- **Staged implementation**
 - **Connection to Alameda Creek Flood Control Channel**
- **Allows for reuse of dredged material**
- **Final EIR certified May 2019**
- **Design & permitting 2020 to mid-2021**
- **Construction to follow**

Stage 1

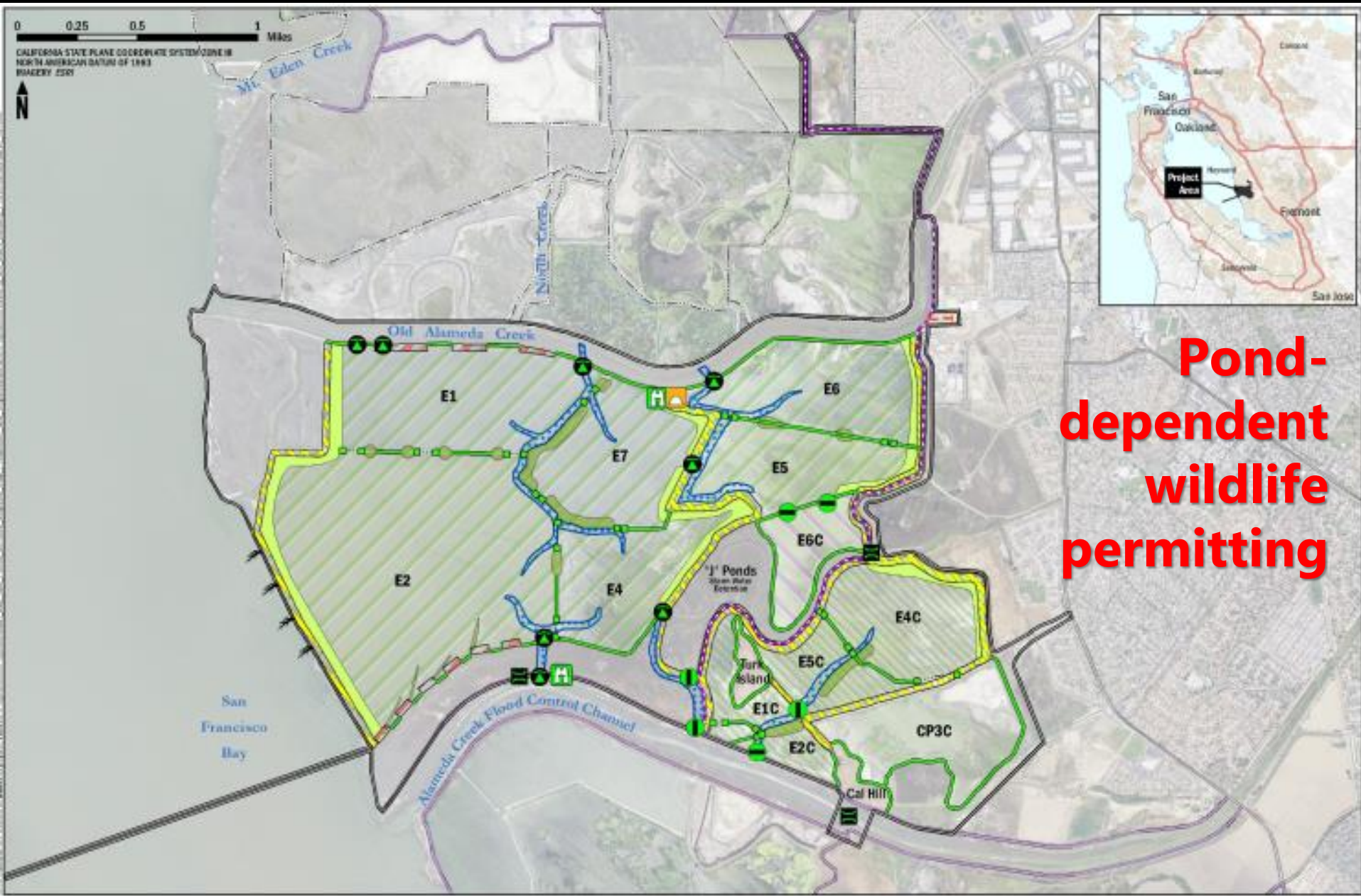


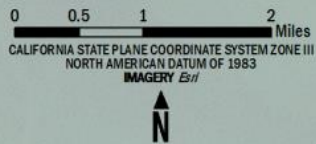
Stage 1



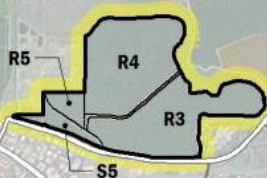
**Up to 3 fish habitat connections with ACFCC;
need Section 408 permit and ACFCD approval**

Stage 2





Ravenswood

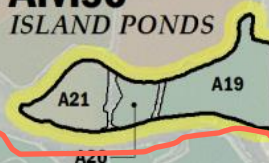


Alameda County Line

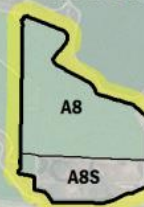
Alviso MOUNTAIN VIEW PONDS



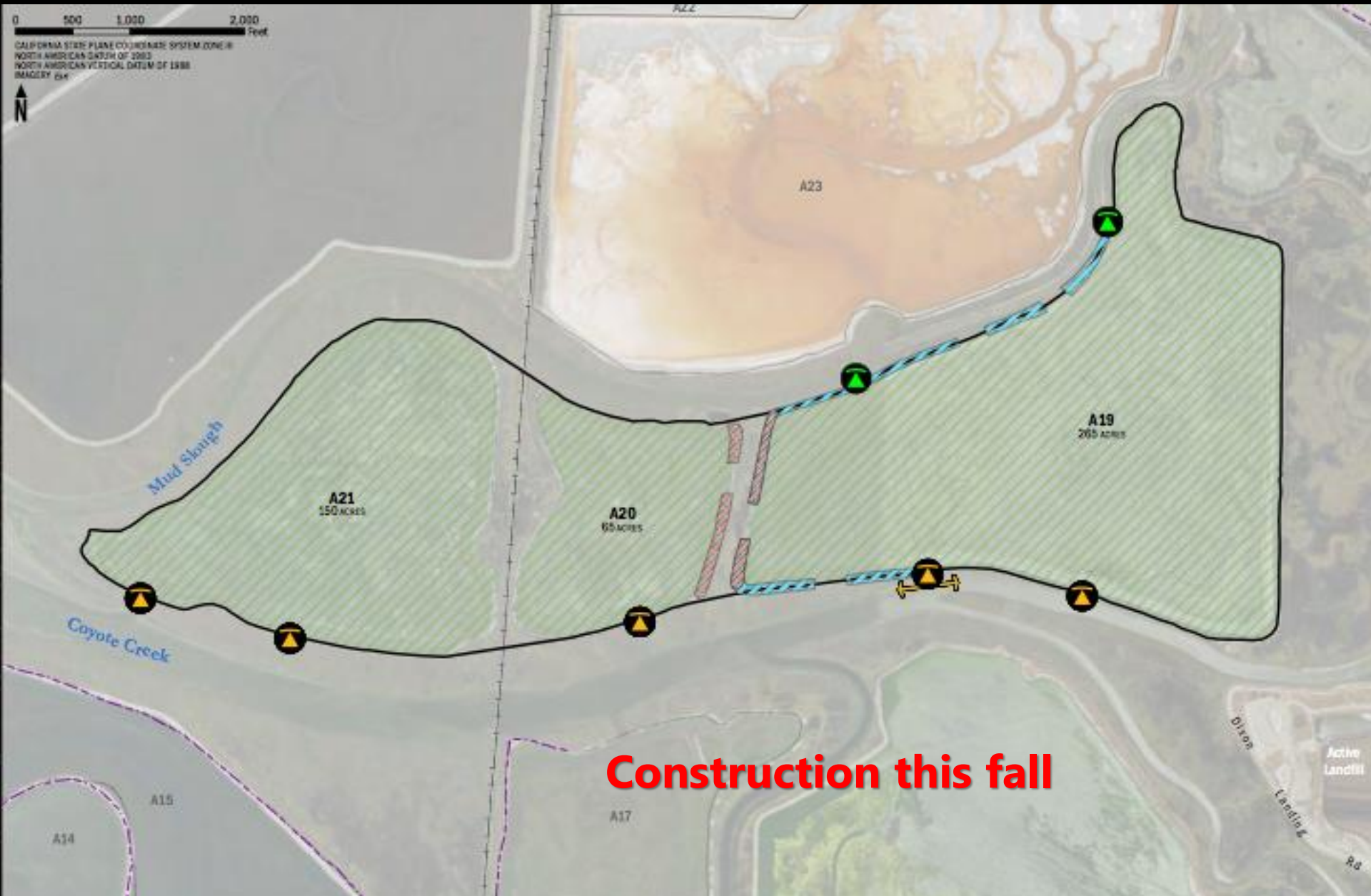
Alviso ISLAND PONDS



Alviso A8 PONDS



Island Ponds



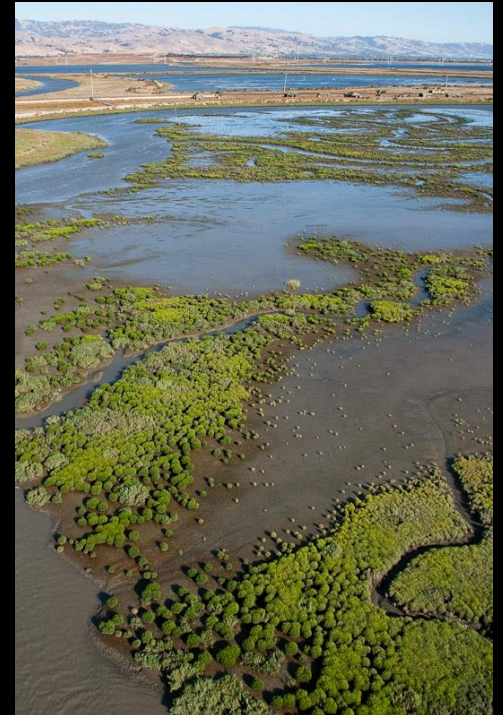
Thank You!





Dave Halsing

dave.halsing@scc.ca.gov

650-814-0588



Sediment & Sea-Level Rise



Scientific Question	Score
Is current vegetated marsh maintained or increased?	
Will sediment accretion rate in restored tidal areas be adequate to create and support emergent tidal habitat ecosystems within the projected 50-year timeframe?	




**Successful so far,
but questions
remain**



Bird Use of Ponds

Scientific Questions	Score
To what extent will the creation of large isolated pond islands maintain numbers and reproductive success of terns, avocet and stilts ?	
<ul style="list-style-type: none">• Will California gulls adversely affect nesting birds in managed ponds?• Is the number of California least terns maintained?	



Scientific Questions	Score
Will managed ponds provide breeding habitat to support sustainable densities of snowy plovers ?	

- **Phase 1 actions not wholly successful**
- **What else can we do?**
- **Can we keep concentrating nests?**
- **How can we effectively control predators?**

Ecotones

