

Your Business is
Our Business

Join the Chamber



Our Team

Emily Griego, President and CEO

Nicole Hankton, Marketing Manager

Angela Villanueva-Olson, Operations Assistant



Our Board of Directors

- Jerry Garcia, Jerry Garcia- State Farm, Board Chair
- Garry Offenberg, Pacific Farms, Immediate Past Chair
- Anthony Thompson, United Business Bank, Vice Chair Finance
- Robbin Beebe, Divine Home Care
- Ken Carbone, Dolphin Graphics
- Gordon Galvan, Galvan and Associates
- Ed Chan, Kaiser Permanente
- Emilio Garcia, 440 Creates/Precision Graphics
- Surlene Grant, Envirocom
- David Grodin, Grodin Financial Services
- Shannon Hackley, Shannon-Leigh Associates
- James Jackson, Alameda Health System
- Gaye Quinn, Quorum Real Estate
- Steve Song, FH Dailey
- Dow Tunis, Drake's Brewing Company
- Martha Trela, UrbanBloc
- Carrie Wright, Alameda County Industries



Leaders Circle Premier Chamber Supporters



Mission and Vision Statement

Our Mission

To foster a vibrant, smart, and current business community in San Leandro. To be the source of advocacy, education, and connections, for business in San Leandro.



Goals

- Attract new members
- Support and retain membership
- Offer strategic programs & events that support business & community prosperity
- Educate and develop leaders and professionals
- Stay on trend with business climate



Innovative and Relevant Programs



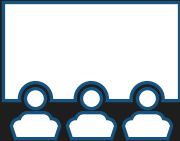
San Leandro By Design

Focus is economic development challenges and opportunities in San Leandro. Think tank of ideas and best practices, propels conversations and action.



Leadership San Leandro

Professional development, networking and outreach program.



Career Pathways

Bridges students and business in an effort to create a local, skilled workforce. Work based learning experience include internships, job shadowing, career fairs and business tours provide a real connection for students to prepare for their future paths.



Public Policy Forum

Discusses public policy matters, the economic health of our community, city issues and ballot measures.



Business Support and Networking Programs (First Friday Coffee Connection and Entrepreneurs Business Forum)

Groups and activities for businesses to stay competitive and increase business awareness based on trends.



“Ambassadors” Program

The Ambassadors serve as volunteers on behalf of the Chamber and are dedicated to promoting our business community and expanding the Chamber membership.



San Leandro Chamber of Commerce Schedule of Events



- Coffee Connection – Networking
- Entrepreneurship Business Forum
- Government Affairs
- Asian Business Council
- Mixers – Networking
- Ribbon Cuttings

6 Recurring Monthly Networking Events



Marketing and Promotion



Your Business is Our Business
Join the Chamber

SAN LEANDRO
CHAMBER OF COMMERCE

SANLEANDROCHAMBER.COM
510.317.1400

120 Estudillo Ave, San Leandro CA 94577



108TH ANNUAL
Cherry Festival
SAN LEANDRO

JUNE 3, 2017 **11AM - 6PM**
SAN LEANDRO CHAMBER OF COMMERCE PRESENTS

PUBPARC
Beer
21ST AMENDMENT BREWERY
DRAKES

BISTRO AT THE CASA
SIP SANGRIA IN THE SHADE

7 FOOD TRUCKS Feat. FOOD TRUCK MAFIA



San Leandro BY DESIGN
Presented by the SAN LEANDRO CHAMBER OF COMMERCE

• LOCAL • MANUFACTURING
EXPANDING COMMERCE THROUGH A STRONGER EAST BAY SUPPLY CHAIN

PANEL PRESENTATION
SAN LEANDRO has a long history of precision manufacturing and the Bay Area has been experiencing heightened levels of activity driven by innovation in industries such as space exploration, energy storage, electronics, bioscience sectors. How can we test these industries together with local manufacturing? This conversation is about here-and-now solutions to strengthen local manufacturing.

APRIL 25TH, 2017 • 2:00 - 4:30^{PM}
21ST AMENDMENT BREWERY
2010 WILLIAMS ST, SAN LEANDRO, CA 94577

SPONSORED BY:
ETP
EAST BAY TRIANGLE PARTNERSHIP

BROUGHT TO YOU BY:



The San Leandro Chamber of Commerce brought manufacturers together last week at the 21st Amendment Brewery to talk about creating supply chains, and have a beer.

Manufacturers Make Some Noise

By Amy Sylvestri
San Leandro Times

The panel discussion on local manufacturing put on by the San Leandro Chamber of Commerce at the 21st Amendment Brewery last Tuesday was a little difficult to hear – thanks to some actual local manufacturing taking place as the brewery bottled beer during the business roundtable. The conversation made some speakers difficult to understand, but it underscored the Chamber's hope for the future of San Leandro industry. They gathered together local business owners to discuss how to make San Leandro a player in a variety of industries, from manufacturing to tech.

The goal is to expand commerce through a stronger supply chain. Imagine a company who makes a widget being able to design, make, ship, and market it all though one or more company sites in San Leandro. San Leandro is unique in that it has warehouses and large factory sites, said see MANUFACTURE, page 10



3RD ANNUAL GOLF & FOOTGOLF
2017
FOOTGOLF BY MONARCH BAY GOLF CLUB

TGIF
ENJOY A DAY ON THE GREEN

MONARCH BAY GOLF CLUB **SEPT. 22, 2017**

SIGN UP NOW
sanleandrochamber.com

USGA
UNITED STATES GOLF ASSOCIATION

BUILD YOUR OWN TEAM
RAFFLE PRIZES
SUPER TICKETS
AWARDS RECEPTION

SPONSORED BY:
mDolley, KAREN CHRY HESTER, CALCOAST, Office of the Mayor, DIVINE, IV, and others.

\$250 Foursome Footgolf - includes champagne toast & awards reception
\$75 Individual Footgolf - includes champagne toast & awards reception
\$600 Foursome Golf - includes lunch on the course & awards reception
\$150 Individual Gopher - includes lunch on the course & awards reception
• \$500 Tee Sign Sponsorship - (2) signs, one on each course

Registration Golfers - 10:00 a.m.
Shotgun Start Golf - 11:00 a.m.
Registration Footgolf - 1:30 p.m.
Shotgun Footgolfers - 2:30 p.m.
Awards & Presentations - 5:00 p.m.



LEADERSHIP SAN LEANDRO

Impact Your World

LEADERSHIP SAN LEANDRO GRADUATION
JUNE 8, 2017 • 5:30-7:30
Featuring Social Media Change Agent, Litterati Founder & TED Talk Alum

JEFF KIRSCHNER

Hosted Bar and Passed Hors D'Oeuvre Reception
Guest Speaker: Jeff Kirschner
founder of a global movement that's "crowdsourcing-cleaning" the planet one piece of litter at a time
Graduation Ceremony

SAN LEANDRO SENIOR CENTER, 13909 E. 14TH ST., SAN LEANDRO, CA 94578

SPONSORED BY:
AEC, and others.



Social Media

Facebook & Twitter:
Increased followers and engagement to elevate visibility and interaction with Chamber businesses

Top Tweet earned 287 impressions

Breanna Hatcher teaching How to Communicate Effective Employee Feedback
#professionaldevelopment #EBF
pic.twitter.com/Nq12bLBCH8



1 Retweet 5 Likes

[View Tweet activity](#)

[View all Tweet activity](#)

San Leandro Chamber
@SanLeandroCC

Hope to see you tonight! @SanLeandroPatch @SanLeandroEvent @CitySanLeandro @DWTNSanLeandro #slchamber

Multi-Cultural Chamber Mixer
In collaboration with the San Leandro Chamber of Commerce, the San Leandro African-American Business Council and Asian Business Council invite you to celebrate our diversity!

Hosted by **Kaiser Permanente**
Thursday, August 10, 2017
5:30 to 7:30 pm
2500 Merced Ave. San Leandro in the Courtyard
FOOD, MOCKTAILS ,

2:14 PM · 10 Aug 2017

2 Retweets 3 Likes

San Leandro Chamber of Commerce
Published by Nicole Hankton · May 9 at 9:03am

What a game last night - Go Dubs! Well, We Believe there's Strength in Numbers tool

Become a new Chamber member between now and May 19th and be entered to win this 4' x 6' flag along with other swag! Annual fees as low as \$250 for individual professionals and \$350 for a small business PER YEAR! Simply click the link to join or call Nicole Hankton at 510-317-1400. ... See More

Get More Likes, Comments and Shares
Boost this post for \$29 to reach up to 16,000 people.

303 people reached

[Boost Post](#)

8 Reactions, Comments & Shares

6 Like	2 On Post	4 On Shares
1 Love	1 On Post	0 On Shares
0 Comments	0 On Post	0 On Shares
1 Shares	1 On Post	0 On Shares
6 Post Clicks	0 Link Clicks	6 Other Clicks

NEGATIVE FEEDBACK
0 Hide Post 0 Hide All Posts
0 Report as Spam 0 Unlike Page

303 people reached

[Boost Post](#)

1 Bryan Azevedo, Nicole Hankton and Sylvia Williams

Like Comment Share

San Leandro Chamber of Commerce
Published by Nicole Hankton · May 5 at 9:30am

If you missed San Leandro by Design on April 25th - read this informative article from San Leandro Times, it really captures the message. Stay tuned for other events! <http://0201.nccdn.net/.../000/17b/20b/SLT-05-04-17-ISSUE.pdf>

Manufacturers Make Some Noise

By Amy Sylvant

The San Leandro Chamber of Commerce brought manufacturers together last week at the 21st Amendment Brewery to talk about creating supply chains, and have a beer.

Get More Likes, Comments and Shares
Boost this post for \$29 to reach up to 16,000 people.

407 people reached

[Boost Post](#)

7 Reactions, Comments & Shares

4 Like	3 On Post	1 On Shares
1 Love	1 On Post	0 On Shares
1 Comments	1 On Post	0 On Shares
1 Shares	1 On Post	0 On Shares
13 Post Clicks	1 Link Clicks	6 Other Clicks

NEGATIVE FEEDBACK
0 Hide Post 0 Hide All Posts
0 Report as Spam 0 Unlike Page

407 people reached

[Boost Post](#)

1 Michael J Garcia, Bryan Azevedo and 2 others 1 Comment 1 Share

Like Comment Share

San Leandro Chamber of Commerce
Published by Nicole Hankton · May 5 at 8:16am

Wake up Newbies & Wallflowers! We here at The Cooler and ready for our First Friday Coffee Connection. Join us!

Get More Likes, Comments and Shares
Boost this post for \$29 to reach up to 16,000 people.

379 people reached

[Boost Post](#)

11 Reactions, Comments & Shares

6 Like	4 On Post	2 On Shares
2 Love	1 On Post	1 On Shares
2 Comments	0 On Post	2 On Shares
1 Shares	1 On Post	0 On Shares
21 Post Clicks	0 Link Clicks	12 Other Clicks

NEGATIVE FEEDBACK
0 Hide Post 0 Hide All Posts
0 Report as Spam 0 Unlike Page

379 people reached

[Boost Post](#)

1 The Cooler, Gisele Coleman and 3 others

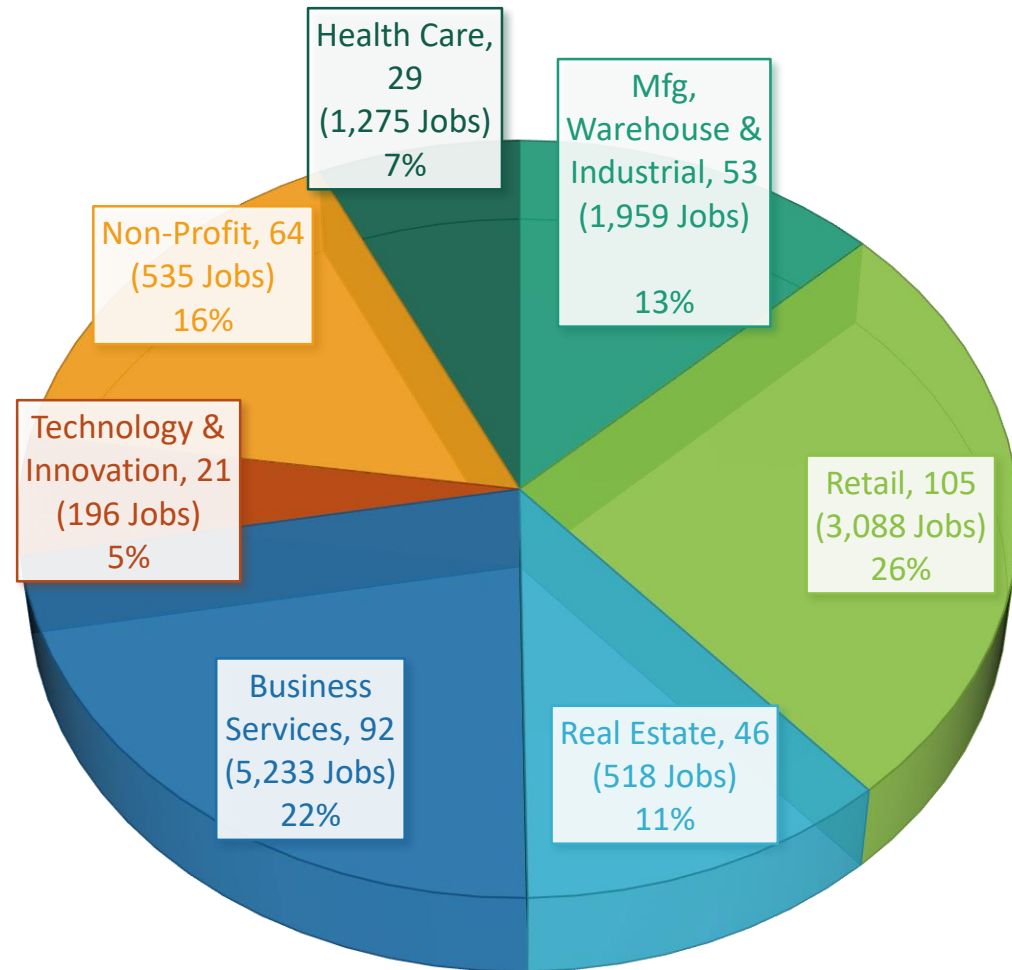
Like Comment Share



Workforce Representation in San Leandro

Our members represent over 12,800 jobs in San Leandro and the region.

***44,301 Total Employees in San Leandro**



*Source: City of San Leandro Economic Development Dept.



Top 20 San Leandro Employers

(Alphabetic Order)

- Acco Engineering ★
- American Medical Response West*
- City of San Leandro ★
- Coca-Cola ★
- Columbia Cosmetics*
- CostCo Wholesale
- Ghirardelli Chocolates ★
- Kaiser Hospital ★
- Kindred Hospital ★
- MV Public Transportation
- OSIsoft ★
- Paramedics Plus ★
- **PCC Structurals*** ★
- San Leandro School District ★
- San Leandro Hospital ★
- Splay (Green Toys)
- St. Francis Electric
- ThredUp (online consignment)
- **UPS***
- Wal-Mart



Denotes all active Chamber members

Development in San Leandro

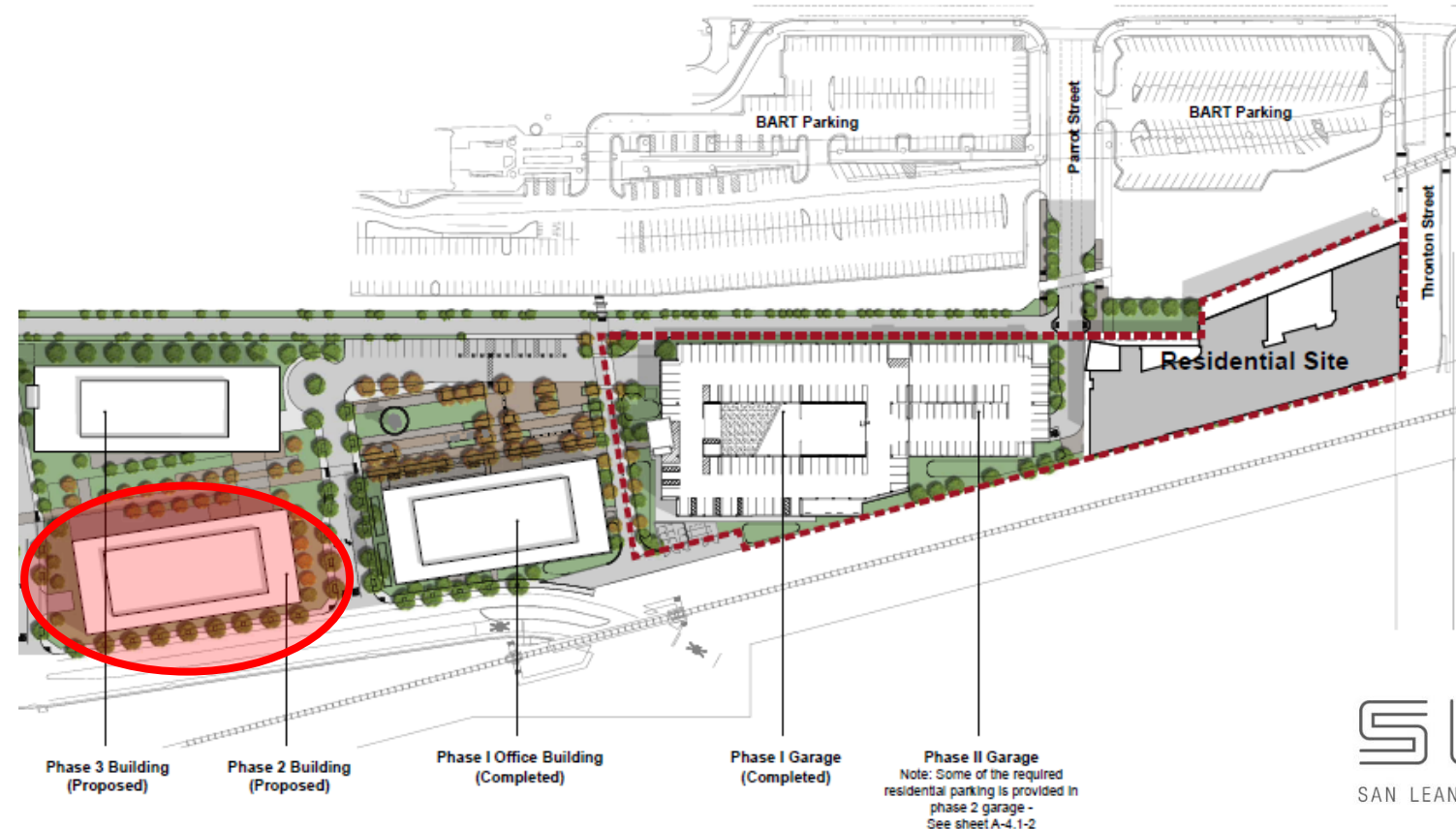
Projects Under Construction & Entitled

Following slides, courtesy of City of San Leandro Economic Development Department



San Leandro Tech Campus –Under Construction

- ❑ 132,000 sf Class A office space
- ❑ \$15 million investment 2 –



Marea Alta Phase II – Under Construction

- ❑ 85 senior units
- ❑ 68,943 sf
- ❑ \$12 million investment



Friant Furniture – Under Construction

- ❑ 1980 W. Ave 140th
- ❑ 306,000 sf rehabilitation
- ❑ \$18 million investment



Marina Gateway Industrial Center – Under Construction

- ❑ 2000 Marina Blvd, Former Georgia Pacific Site
- ❑ 293,174 sf Class A Industrial Building
- ❑ \$45 million investment
- ❑ Marketed for Advanced Manufacturing
- ❑ Public Improvements:
 - ❑ Utility Undergrounding
 - ❑ 10 ft Street Widening



San Leandro Business Center – Under Construction

- ❑ 100 Halcyon Dr
- ❑ 30 acre Redevelopment Site
- ❑ 550,000 sf of Class A Industrial
- ❑ \$70 million investment



Trammell Crow Company

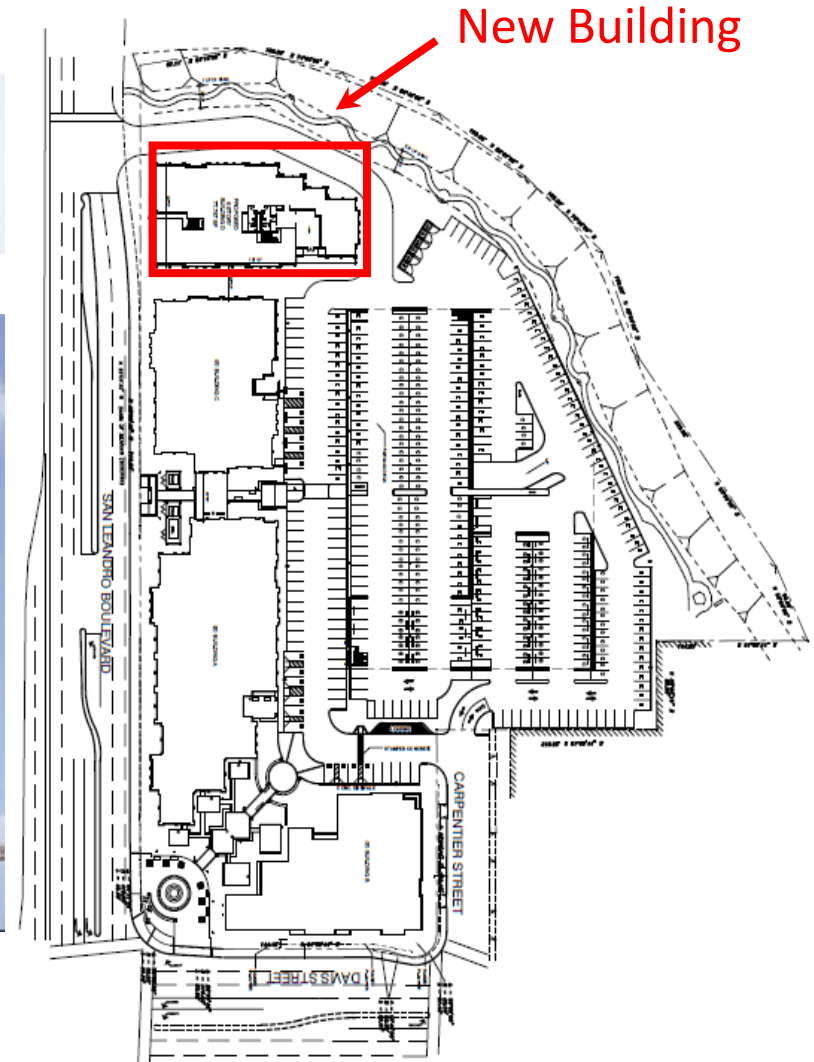
SLTC – Mixed-Use Residential - Entitled

- ❑ 197-unit Multi-Family Housing Development
- ❑ Includes 13,000 sf of office space
- ❑ 3.13 acres West of BART between Parrott & Thornton



Creekside Plaza 4th Building - Entitled

- ❑ 6.41 acre site
- ❑ 306,050 total sf



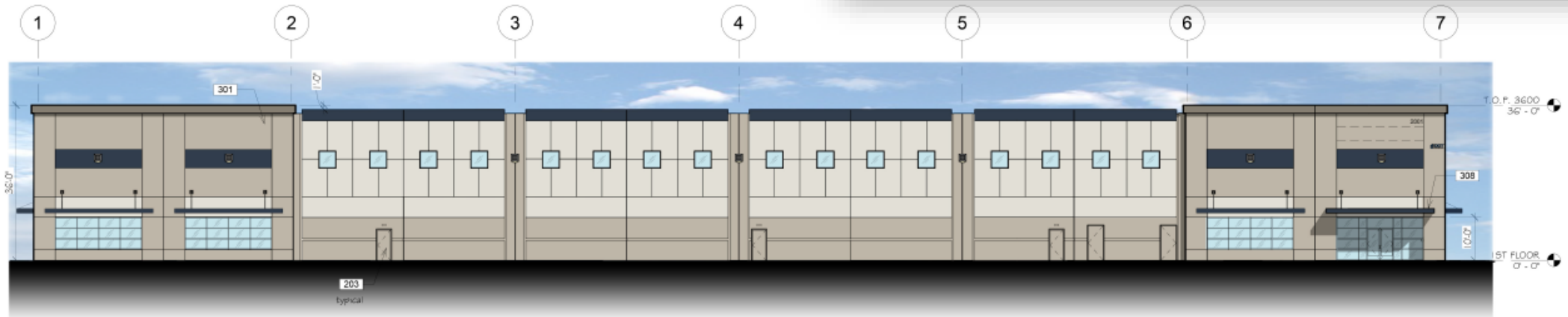
Galvan Apartments – Entitled

- ❑ 1965 Washington Ave.
- ❑ 60 units, 5 stories
- ❑ 0.5 acre Redevelopment Site



2001 Williams Street - Entitled

- ❑ 2001 Williams Street
- ❑ 72,200 sf warehouse and 3,000 sf office on 157,934 sf lot size
- ❑ \$15 million investment



NORTH ELEVATION

SCALE: 1/16" = 1'-0"

New Restaurants – Coming Soon

- Shabu House (1376 E. 14th Street)
- Moussaka Mediterranean Kitchen (599 Dutton Ave) – NOW OPEN
- Top Hatter's Kitchen (855 MacArthur Blvd)
- Bonchon Chicken (1267 Washington Ave)



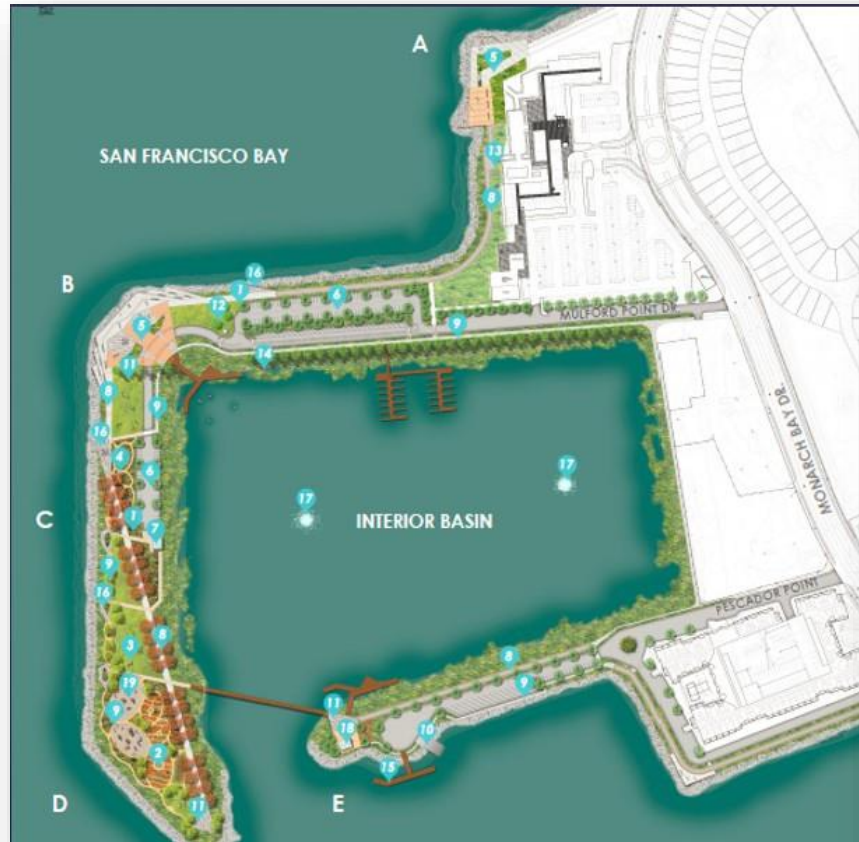
Proposed Development & Opportunity Sites

Following slides, courtesy of City of San Leandro Economic Development Department



Monarch Bay – Shoreline Development

- ❑ 220-room hotel
 - ❑ 2 Restaurants & Banquet Space
 - ❑ 500 housing units
-
- ❑ New Mulford-Marina library branch
 - ❑ Park space, including pedestrian promenade and bicycle lanes



Alvarado / Aladdin – Proposed Industrial

- 2756 Alvarado St
- New 152,000 sf Class A Industrial



Current



Cannabis Manufacturing & Laboratories

- ❑ Cannabis Testing Laboratories are a conditionally-permitted use
- ❑ Pilot Program enables 5 Cannabis Product Manufacturing with a Conditional Use Permits
 - ❑ Dispersa Labs Inc. – Proposed
 - ❑ 1655 Abram Court
 - ❑ 7,500 sqft to manufacture inhalation products
 - ❑ DL001 Product: dry powder inhaler system for cannabinoids



Eden Housing – Proposed Residential

- 1604 San Leandro Blvd x Parrott
- 62 units of affordable housing



Broadmoor Village – Proposed Residential

- ❑ 311 MacArthur Blvd
- ❑ 42,444 sf
- ❑ 21 townhome units



DAVID LANGON

Parrott St. & Washington Ave. – Proposed Development

- ❑ 0.42 acre Redevelopment Site
- ❑ 2 RDA Owned Parcels
- ❑ 22-24 units
- ❑ Ground floor retail



Sansome Pacific – Proposed Mixed Use

- ❑ 1188 E 14th St
- ❑ 1.2 acre Redevelopment Site
- ❑ Multi-family residential units
- ❑ 2 small retail spaces, specialty grocer and parking garage
- ❑ Sansome Pacific Properties



Sample Design – Similar Project

Alvarado & Antonio – Opportunity Site

- ❑ 5.03 acres
- ❑ TOD Residential
- ❑ Potential for up to 500 multi-family housing units
- ❑ Public park and Creek Trail access



Bay Fair Transit Oriented Development

□ Draft Bay Fair TOD Specific Plan

- City received \$440K planning grant from MTC in 2014
- Public-private partnership with BART, Madison Marquette, and Alameda County
- Plan vision:
 - “Sustainable, vibrant, walkable, and safe transit-oriented village with a diversity of land uses serving local and regional populations.
- TOD Plan benefits:
 - Ongoing City & private investment in south San Leandro area
 - Greater funding opportunities
 - Incentivize/streamline regulatory process
 - Final planning puzzle piece for E 14th Street corridor



SAN LEANDRO CHAMBER OF COMMERCE PRESENTS

SPOTLIGHT:

San Leandro

A MAKER CITY

BUSINESS AWARDS CELEBRATION

JOIN US TO HONOR
THE **LEADERS AND MAKERS**
IN SAN LEANDRO

01.25.18

5:30PM · 8:30PM MAIN HALL, SAN LEANDRO SENIOR CENTER
13909 E. 14TH STREET, SAN LEANDRO

INDIVIDUAL TICKETS \$125 // TABLES \$2000

VIP WINE RECEPTION · HOSTED BAR & HORS D'OEUVRES · DINNER & AWARDS · NIGHTCAP & NETWORKING · SEMI-FORMAL

PREMIERE SPONSOR:



You're invited!

San Leandro Chamber of
Commerce
Business Awards Celebration

Get your tickets online at
sanleandrochamber.com