



## Bath Sunrise Rotary Bulb Fundraiser 2025

**All bulbs are large, very high quality Dutch bulbs  
purchased from Van Engelen Flower Bulb Company.**



### **Christophii Allium (Favorite)**

Circa 1884, the robust, long-lasting *Star of Persia* has immense, loosely compacted 8"- to 10"-wide globes comprised of over 50 starry, amethyst-violet florets with prominent metallic shine and green eyes (ovaries). Rabbit-, rodent- and deer-resistant, *A. christophii* is adored by bees, butterflies and helpful pollinators.. May/June. HZ: 4-8. 18" to 24".



### **Purple Sensation Allium (Favorite)**

Rabbit, rodent and deer-resistant Purple Sensation has 4"- to 5"-wide, violet-purple globes comprised of dozens of starry florets. Adored by bees, butterflies and pollinators, it has become a garden essential in borders, remarkable drifts and cut flower arrangements. May/June. HZ: 4-8. 24" to 30".



### **Allium Azureum (New)**

*The Blue of the Heavens* has beautiful 1"- to 2"-wide, cornflower-blue orbs comprised of dozens of starry florets accented with darker blue midveins. Rabbit-, rodent- and deer-resistant, *A. azureum* is adored by bees, butterflies and helpful pollinators. Plant it in substantive clusters for the best effect (and don't let anyone weed the wiry stems as they emerge from the soil). Bulb size: 4 cm/up. June. HZ: 4-7. Height: 24".



### **Allium Gladiator Mix (Returning Favorite)**

An award-winning 1981 cross between *A. aflatunense* and *A. macleanii*, this lofty favorite has spectacular 6"-wide, rose-purple globes comprised of tightly compacted, starry florets dotted with green eyes (ovaries). It gives gardens amazing architectural structure. Rabbit-, rodent- and deer-resistant, its low, strappy foliage starts to brown out prior to flowering. It is much loved by bees, butterflies and helpful pollinators. Bulb size: 18 cm/up. May/June. HZ: 5-8. Height: 36" to 48".



### **Crocus flavus Golden Yellow (New)**

Also known as *C. flavus* Yellow Mammoth, this 17th century heirloom has six-petaled, rich buttercup-yellow flowers with matching anthers and grass-like foliage with narrow, median silver-white stripes. Its graceful 5" tall flowers open and close on sunny days. These larger corms have reticulated tunics. Crocus Class: Dutch Large Flowering. Bulb size: 9 cm/up. Full to partial sunlight. Bloom time in horticultural zone 5: April. Plant 5" deep and 4" apart. HZ: 4-8. Height: 5".



### **Chionodoxa Forbesii Blue Giant (RF)**

Commonly known as *Glory of the Snow* since it is one of spring's early bloomers, Blue Giant is the improved form of *C. forbesii* with up to eight, larger, star-shaped, six-petaled clustered rich blue flowers with bright white central zones atop dark stems with sparse, narrow foliage. It is deer-resistant and naturalizes readily in well-draining soil and in full to partial sunlight. It's terrific planted en masse in garden borders, sunny woodland borders, rock gardens and in irregular river-like swaths.



### **Crocus vernus Flower Record (New)**

Flower Record has six-petaled, deep spectrum-violet flowers with showy orange anthers and grass-like foliage with narrow, median silver-white stripes. Its graceful 5" tall flowers open and close on sunny days. These larger corms have reticulated tunics. Crocus Class: Dutch Large Flowering. Bulb size: 9 cm/up. Full to partial sunlight. Bloom time in horticultural zone 5: April. Plant 5" deep



and 4" apart. HZ: 4-8. Height: 5".

### **Muscari aucheri Dark Eyes (New)**

A prized cross between *M. neglectum* and *M. pallens*, *M. aucheri* Dark Eyes yields slightly conical racemes of densely packed, perfectly formed, intensely sapphire-blue florets decorated with bright white rims above ample foliage clumps. It has a pale sweet fragrance. Bulb size: 6 cm/up. Full to partial sunlight. Bloom time in horticultural zone 5: April/May. Plant 5" deep and 3" to 4" apart. HZ: 4-8. Height: 6" to 8".



### **Iris danfordiae (New)**

This 1876 heirloom is yellow with darker falls and faint green spots. Bulb size: 6 cm/up. Early April. Plant 4" deep and 4" to 5" apart. HZ: 5-9. Height: 4" to 6".

Irises are *The Art & Soul of Spring*.



### **Iris reticulata Harmony (New)**

Bluebird-blue standards with royal-blue falls and yellow, white-rimmed blotches. Bulb size: 6 cm/up. Early April. Plant 4" deep and 4" to 5" apart. HZ: 5-9. Height: 4" to 6".

Irises are *The Art & Soul of Spring*.



### **Hyacinthus orientalis Yellowstone (New)**

This new hybrid has pale forsythia-yellow florets with a darker striations and a darker reverse. You'll need about four bulbs per square foot. Bulb size: 16/17 cm. Full to partial sunlight. Bloom time in horticultural zone 5: April. Plant 6" deep and 6" apart. HZ:





4-8. Height: 8" to 12".

Hyacinths are *The Art & Soul of Spring*.

### **Hyacinthus orientalis Blue Jacket (New)**

One of the most popular Hyacinths of all times, award-winning Blue Jacket, circa 1953, has deep blue-purple florets, or *nails*, with paler petal edges. This prized heirloom is known to be a good early to mid-season forcer. Bulb size: 16/17 cm. Full to partial sunlight. Bloom time in horticultural zone 5: April. Plant 6" deep and 6" apart. HZ: 4-8. Height: 8" to 12".



### **Tulip Black Hero (New)**

A sport of the famed Queen of Night, Black Hero is lustrous midnight-black with a maroon sheen. Blooming later than most, long-lasting Black Hero has extremely substantive flower petals. Tulip Class: Peony Flowering (Double Late). Bulb size: 12 cm/up. Late April. HZ: 3-7. Height: 22".



### **Tulip Jaap Groot (Returning Favorite)**

A mutation out of Golden Apeldoorn, Jaap Groot is uniquely colored. It is melon-yellow with ivory petal edges and feathering (which darken as the blooms mature), above showy margined foliage. Tulip Class: Giant Darwin Hybrid. Bulb size: 12 cm/up. Mid-April to May. HZ: 3-7. Height: 22".



### **Tulip Bleu Aimable (New)**

An award-winning heirloom dating back to 1910, Bleu Aimable, a [Blue Parrot](#) sport, has a unique and exquisite form and is the most beautiful shade of deep lilac with a blue sheen, a magenta blush and a small interior white center swathed in blue. As you can see from



our photos, in addition to become paler as its blooms mature, Bleu Aimable's coloration appears to change in different types of light. Tulip Class: Single Late. Bulb size: 12 cm/up. May. HZ: 3-8. Height: 24".

### **Tulip Yellow Pomponette (New)**

This incredibly lush, fully double, huge pom-pom of a flower is bright sunshine-yellow. Its Darwin Hybrid parentage gives this award-winner notable height, strength and size. The strong, drumstick-like stems look like lime Tootsie Rolls until the tight buds begin to unfurl. Tulip Class: Peony Flowering (Double Late). Bulb size: 12 cm/up. Late April. HZ: 3-7. Height: 22".



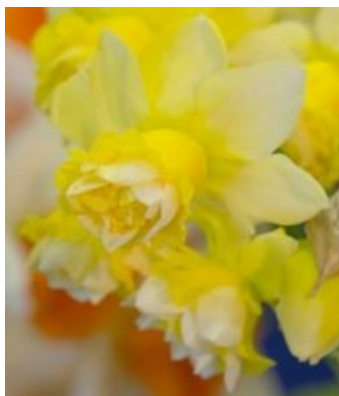
### **King Alfred Jumbo DN (Favorite)**

The legendary Trumpet Daffodil King Alfred, so registered in Great Britain in the 1890s, set the platinum standard by which all golden-yellow Trumpet Daffodils have been judged since. We offer you Trumpet Daffodil Dutch Master, the best King Alfred look-alike based on its vivid yellow color, strong substance, classic form, health and excellent naturalizing capability. Narcissus Class: Trumpet or Long Cupped Daffodils (Royal Horticultural Society Division 1). Bulb size: DNII: 15/17 cm. April. HZ: 3-7. 18" to 20".



### **Narcissus Garden Opera (New)**

A British Rosewarne hybrid registered in 2006, this fragrant multi-flowering Jonquilla has a golden-yellow perianth and a darker bowl-shaped corona. It yields three or more 2 1/2" flowers per stem. It was so named for the extravagant opera performances in the garden of the Body family. Narcissus Class: Jonquilla (Royal Horticultural Society Division 7). Bulb size: 12/14 cm. May. HZ: 5-9. Height: 12" to 14".



### **Narcissus Milena (New)**

A 2015 Jan de Winter hybrid, it has a 3.5"-wide, upward-facing,



greenish-yellow perianth and a cup packed with orange-yellow petaloid segments. Fragrant, its slightly reflexed perianth has white flames spreading from the base of its extravagant cup. It is deer- and rodent-resistant. Narcissus Class: Double (Royal Horticultural Society Division 4). Bulb size: 10/12 cm. Bloom time: April/May. Horticultural zones 3-8. Plant 5" to 6" deep and 5" to 6" apart. Height: 16".

### **Narcissus Rapture (New)**

Rapture is an award-winning, golden-yellow Grant Mitsch hybrid with a flawlessly reflexed perianth and a long cylindrical cup with a wavy rim. It is quite possibly the most perfectly formed in its class. With tremendous energy and attitude for a diminutive bloom, Rapture appears to swoop in and spy through fences and around garden corners. Early flowering. Narcissus Class: Cyclamineus (Royal Horticultural Society Division 6). Bulb size: 12/14 cm. April. HZ: 3-8. Height: 10" to 12".

**Color selection this year based on the  
colors of the Ukrainian Flag in support of  
Rotary clubs in Ukraine**



Special Thanks to



HALCYON  
MAINE YARN EST. 1971

For printing this booklet

**For more information please go to:**

[www.bathsunriserotary.org](http://www.bathsunriserotary.org)

contact Al Mesrobian at 442-8625 or

[alm@ohamaine.com](mailto:alm@ohamaine.com)

**Please email your form to**

[alm@ohamaine.com](mailto:alm@ohamaine.com)

Or contact any Bath Sunrise Rotary member



**Bath Sunrise Rotary  
2025 Order Form**



Bulbs can also be purchased at our sale tables at Brackett's Market and the Bath Farmer's Market, Saturdays in October.

**Your Contact Information**

Name \_\_\_\_\_

Phone \_\_\_\_\_

Email \_\_\_\_\_

Address \_\_\_\_\_

Payment Enclosed Yes \_\_\_\_\_ No \_\_\_\_\_

<b><u>Bulb Variety</u></b>	<b><u>Price</u></b>	<b><u>Number Ordered</u></b>
Christophii Allium	8/\$10	_____
Purple Sensation Allium	8/\$10	_____
Allium Azureum	8/\$5	_____
Allium Gladiator	2/\$10	_____



Crocus Flavus Golden Yellow	10/\$10	_____
Chionodoxa Forbesii Blue Giant	8/\$5	_____
Crocus Vernus Flower Record	10/\$10	_____
Muscari aucheri Dark Eyes	8/\$5	_____
Iris Danfordiae	8/\$10	_____
Iris Reticulata Harmony	8/\$10	_____
Hyacinth Yellowstone	5/\$10	_____
Hyacinth Blue Jacket	5/\$10	_____
Black Hero Tulip	7/\$10	_____
Jaap Groot Tulip	7/\$10	_____
Bleu Aimable Tulip	7/\$10	_____
Yellow Pomponette Tulip	7/\$10	_____
King Alfred JumboNarcissus	5/\$10	_____
Garden Opera Narcissus	6/\$10	_____
Milena Narcissus	6/\$10	_____
Rapture Narcissus	6/\$10	_____