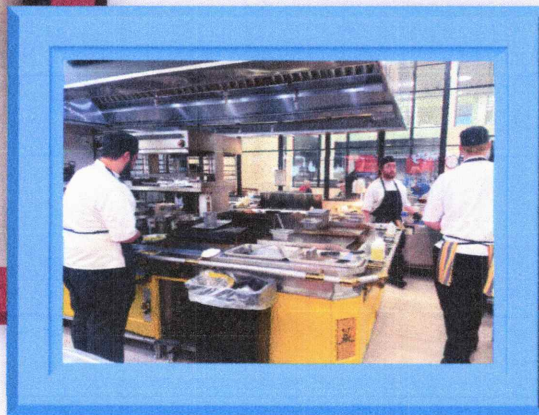


Week of April 9, 2025

ROTARY NOTARY

CLUB FIRESIDE AT NICHE



EWR Rotarians were able to watch NICHE culinary students prepare their lunch while eating their salads. After the entree course of pork tenderloin, smashed potatoes and veggies was served, we were treated to brownies and cookies all baked by the students.

After lunch Chef John and Chef Lexi took 23 EWR Rotarians on a tour of the NICHE facilities. We experienced the Henry's banquet area named for Henry's Department Store that was originally housed in the NICHE building. The area includes indoor and outdoor spaces with room for up to 495 people. The space is available for weddings and receptions.

The tour also included the Cargill Culinary Theater and many kitchen and dining areas used by the students.

Finally, we enjoyed looking out over the NICHE facilities and Jinya from the John and Lexi Michael Observation Deck

LOOKING AHEAD

APRIL 18

SCHOLARSHIP DEADLINE

SEE MORE INFORMATION ON OUR WEBSITE

Deadline is next week. Encourage students to apply.

MAY 27-30

RYLA CAMP

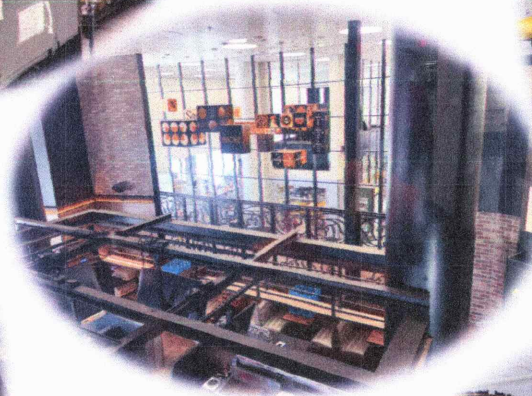
APPLICATION DEADLINE IS MAY 11

EWR IS SEEKING CANDIDATES FOR OUR COLLEGE SCHOLARSHIPS. IF YOU KNOW OF A WORTHY CANDIDATE, ENCOURAGE THEM TO APPLY. FOR MORE INFORMATION AND AN APPLICATION GO TO OUR CLUB'S WEBSITE AT WWW.EASTWICHITAROTARY.ORG.

Take a look at our club's website for upcoming programs and other news.

SNAPSHOTS

FROM OUR WEEKLY MEETING



MENTAL WELLNESS BENEFITS OF VOLUNTEERING

65%

of volunteers say they
are better communicators
because of volunteering

80%

of volunteers say they
were more aware of their com-
munity after volunteering

59%

of volunteers say they
felt more confident after
volunteering

NEW CLUB HELPS BIG IN AFTERMATH OF FIRE

By Tracey Thompson Busa, Rotary Club of Marina del Rey, California, USA

From Rotary 350—Official Blog of Rotary International, April 3, 2025

The most destructive fire in Los Angeles, California, USA's history broke out on 7 January in Pacific Palisades, Malibu, and Eaton. The Marina del Rey Rotary Club, just eight months old, was determined to do whatever we could to help the victims. In just two days, we recognized the immediate need and sprang into action by creating a task force called the "Heart of Harbor" powered by our club, organizing one of the largest donation drives on the Westside.

We let people know by word of mouth and social media, collaborating with the Santa Monica Windjammers Yacht Club. More than 1,000 people dropped off donations for the fire victims, firefighters, and first responders. The community answered the call for volunteers, as 200 people stepped forward to help, operating trucks, vans, and cars to pick up and drop off supplies all over Los Angeles. Other volunteers made 1,000 sandwiches to feed the helpers.

Within four days, we had set up a pop-up distribution center at Fisherman's Village, which offered free supplies to anyone in need, including toiletries, clothing, nonperishable food, gift certificates, and monetary donations. Truckloads of donations came from all over the city from individuals, local organizations, and corporate sponsors. Our club formed partnerships with city and county officials, The Boys & Girls Club of West San Gabriel Valley, local and national businesses, and other Rotary clubs to respond to ever-changing needs.

For these efforts, our club was featured on five segments of Good Day LA, a morning news show, and singled out for recognition by county officials.

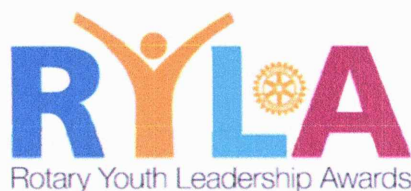
Under the leadership of president Kurtis Sundblom and our board of directors, our 32 members have continued to connect people with ongoing need of housing, furniture, household items, and all the basics for starting anew. On weekends, our members drive truckloads of supplies to police, firefighters, and the National Guard working in the burn areas up the coast. We have served over 2,000 meals to first responders and used 45 trucks and 250 volunteers to deliver more than 500,000 pounds of supplies and 80,000 pounds of water.

By providing aid and collaborating with our local community, we have forged a strong and positive Rotary presence as the "Heart of the Harbor." We recognized early on the importance of identifying the talents of our members and tapping into their strengths to pull off an ongoing event of this magnitude. By giving everyone a voice and a common purpose to help in whatever capacity they can, we empowered our members. As word spread, so has interest in our club. We are delighted to have a waiting list for people who want to join.

We are grateful for the support and collaboration of the members of our community, it's leaders, Rotary District 5280, and our corporate neighbors.



2025 RYLA Camp
Tuesday, May 27–Friday, May 30



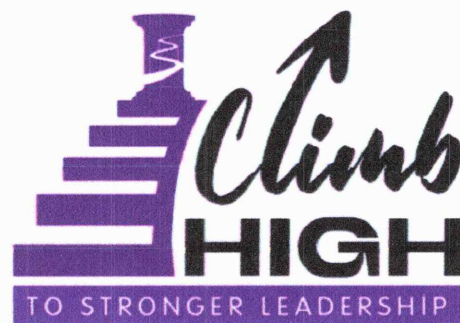
Now is the time for EWR to be recruiting students and getting them registered for RYLA. We have an exciting schedule for this year. Rumor has it that RYLA may be in Wichita for the workday and are on the schedule to meet with the Mayor. The students will hear about human trafficking and homelessness. Each EW Rotarian should help in identifying students to participate. Remember, Rotarians can pay for their child, grandchild, or other worthy student to attend. More information can be found at www.rotary5680.org. Thanks for your help!

PLEASE NOTE

OUR DISTRICT IS OFFERING EVERY CLUB

ONE \$100.00 SCHOLARSHIP

AS LONG AS WE REGISTER THE STUDENT BEFORE MAY 1.





Rotary
PEOPLE OF ACTION

Now Hiring -

**District 5680
Executive
Secretary**

- Flexible hours – avg 10 hrs wk
- Pay \$675 Month
- Strong organization and communication skills required
- Adept at scheduling
- Knowledgeable about district policies
- Formulate meeting agendas and zoom meetings
- Attend key training events



Send Resume With
References To
rotary5680@gmail.com
316-772-6447

Full job description at rotary5680.org

Deadline April 15



**DEADLINE FOR APPLICATIONS
TUESDAY, APRIL 15**

ROTARY DISTRICT JOB OPENING!

Our district is looking for a person who can help coordinate our services to all the clubs and Rotarians in our district. This is a paid position and we are looking for a person is motivated to work with the district leadership in supporting, planning, and executing programs and services.

Do you know of a person who might be interested in applying for this very important district position? If so, have them apply by the deadline of April 15.

DISTRICT AND RI NEWS

Rotary



PEOPLE of ACTION

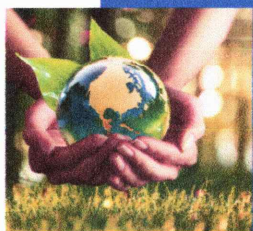


April

ENVIRONMENT MONTH

"We owe it to ourselves and to the next generation to conserve the environment so that we can bequeath our children a sustainable world that benefits all."

Wangari Maathai



PUT THIS ON YOUR CALENDAR TODAY AND PLAN TO ATTEND!!

April 24-30, 2025	World Immunization Week
May 27—30, 2025	RYLA Summer Camp
June 13—14, 2025	Rotary Young Professionals Forum (Ensenada, Mexico)
June 21—25, 2025	RI Convention, Calgary, Canada
July 1, 2025	NEW ROTARY YEAR
October 17-19, 2025	District Conference, Hays, KS

ALL EWR ROTARIANS SHOULD PUT THIS ON YOUR CALENDAR AND ATTEND!



PUT THESE DATES ON
YOUR CALENDAR!

JOKE OF THE WEEK



What's a tornado's favorite game?
Twister.

GOODS AND ENDS



Basic Education and Literacy



Maternal and Child Health



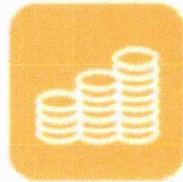
Peace and Conflict prevention / resolution



Disease prevention and treatment



Water and Sanitation

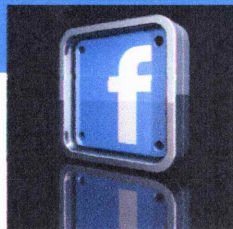


Economic and Community Development



Supporting the Environment

FIND MORE ABOUT ROTARY THROUGH VARIOUS FACEBOOK PAGES, INCLUDING EWR, DISTRICT 5680, ROTARY INTERNATIONAL, AND A HOST OF OTHER PAGES.



Leadership Corner

EVERYDAY

LEADERS



UNDERSTAND THAT POWER COMES FROM WITHIN



SEEK MULTIPLE PERSPECTIVES



KNOW THEIR "WHY"



ASK A LOT OF QUESTIONS



BELIEVE IN THE VALUE OF EACH PERSON



TREAT PEOPLE WELL



BUILD BRIDGES



PRACTICE VULNERABILITY AND COURAGE



ARE PART OF THE SOLUTION



REMEMBER TO PLAY AND RECHARGE

“

Every day is a new leaf, a beginning again, an opportunity.

FRANK L. MULHOLLAND

Rotary
District 6990

