

## Rotary Foundation Presentation

**Please RSVP and pay for Christmas Function prior to the 17th**

Next Meetings	Tuesday 17 <sup>th</sup> December, 2019	2020
Location	Bowral Golf Club	Bare Foot Bowls
Program	Christmas Celebration	
Speaker		
Intro / Vote of Thanks		
Dinner Fee Duty	Please pay before the night	
Journalist	Trevor Fair	
Regalia Duty		
If you are unable to do duty, please find a replacement and advise Trevor Fair by email: <a href="mailto:trevorf@oxleypartners.com.au">trevorf@oxleypartners.com.au</a>		



## UPCOMING EVENTS

### Christmas Party – 17<sup>th</sup> December - BOWRAL Golf Club

Unfortunately there is insufficient room for a dance floor, however please bring your singing voices!

Thank you to everyone who has;

- \* RSVP
- \* Paid on Line
- \* Contributed to the Pantry

### Rural Fire Service BBQ

Hill Top RFS Shed Saturday 21<sup>st</sup> Dec - 6:00pm

Please confirm with Rod Aistrope.

**Journalist:** Tony Glenn

**Invocation:**

Brian Elliott, apparently the only member with sufficient memory bank capacity, once again said the Invocation.

**International Toast:**

Graham Hicks, feeling picked on by the creator of the International Toast, proposed a toast to the President and members of the Rotary Club of Ouagadougou (oo-ga-doo-goo) based in the Capital of Ouagadougou, Burkina Faso (formerly Upper Volta).

Tomorrow **Burkina Faso** celebrates its Republic Day when the people recognise the establishment of their Nation in 1958 after over 60 years as a colony of France. They achieved their independence two years later although they remain part of francophone north west Africa.

As a colony the country was known as **Upper Volta** as it lies at the north of the Volta River catchment. It is land locked surrounded by Cote de Ivoire, Ghana and Togo to the south, Benin and Niger to the east and Mali to the north and west.

Since independence until a democratic election in 2015 Burkina Faso has been subject to repeated coups and uprisings. It has had regular terrorist attacks as recently as October this year but appears to now have political stability.

Burkina Faso has a population of around 20 million and is very poor relying on subsistence farming and mining for its survival. Its UN Human Development Index is very low.

The Capital is **Ouagadougou**, a city of 1½ million in the centre of the country which has 8 of the 10 Rotary Clubs. **The Rotary Club of Ouagadougou Synergie** is the newest. Chartered in District 9101 in 2014 it has 12 Members led by **President Nadege Some**.

One of their ongoing projects is supporting health delivery to women through a local clinic. They have also played their part in continuing to deliver polio vaccine to their children. Burkina Faso is Polio Free.

**Announcements:**

Pres Robert De Jongh urged all members to attend the last **District 9710 Conference:**

Venue: Ulladulla

Dates: Friday 6 March to Sunday 8 March 2020  
Apparently a bus is being arranged to drive us to Ulladulla

You need to book your own accommodation – Robert has a two bedroom apartment reserved that he will not

be using so if you are interested in taking it please gave him a call

Early Registration closes 31 December 2019. I think you can save \$10.00.

**Don Graham** has been appointed the Rotaract Liaison Officer for the new Rotaract Club.

Don Graham raised the request of a Frensham student to be sponsored to the Adventure in Citizenship – cost to the Club \$1,900.00. Majority of the view that Club Youth budget is already committed and Don to write and advise options for the student.

Members are advised that it is more appropriate that all decisions for donations are made through the Board and not on an ad hoc basis from the floor of a dinner meeting. A little more planning and forethought required so things are not rushed (although it is recognised there are occasions where emergencies do arise).

**Christmas Dinner Meeting**

Venue: Bowral Golf Club

Date: 17 December 2019

Time: 6.00pm for 6.30pm

Cost: \$50/head – MUST be paid to Ian by Friday AND must advise Trevor of attendance by Friday as numbers have to be locked in

**Australia Day function:** Ian and Vicki Kelley have kindly offered their home for this function. More about that in 2020.

**Mary** reported that Empire Cinema has allocated the new James Bond Movie to our club in 2020. Aim is to fill two cinemas. Date to be firmed up between 8 or 8 April. Tickets will be available for sale from February.

**Jacinta** thanked the Club for the donation to School for Life

**Jacinta** raised the works to be undertaken at the Bowral Youth Refuge. The movers and shakers did not attend the 5.30pm meeting so nothing happened. Frustration for those who did attend! Various members to arrange materials etc – Robert De Jongh (Gubbins), Rod, Lynton to liaise with Ian Johnson.

**Uniting Church** has a plant sale this Saturday.

**Guest Speaker – David McCosh**

David gave a constructive and very thorough presentation on The Rotary Foundation. His presentation is one that should be handed to each Foundation Director on their appointment as it removed all of the usual confusion as to how to donate and/or apply for grants.

Commenced 1917 by Arch Klumph

Polio Plus started 1985 by RI President Clem Renouf (Australian)

Grants from Foundation need to work within the following categories:

Peace, Disease, Water/Sanitation, Maternal/children, Education/literacy and Community Economic Development

In 2018 Rotary Foundation made \$86,000,000 in grants, as follows:

Disease	\$35 million
Water	\$18 million
Education	\$11 million
Economic	\$9 million
Children	\$7 million
Peace	\$3 million

Value of the donated dollar to Rotary Foundation  
90.8-92% of donations are applied on the ground  
Charity Navigator gives Rotary Foundation a 4 Star ranking (highest)

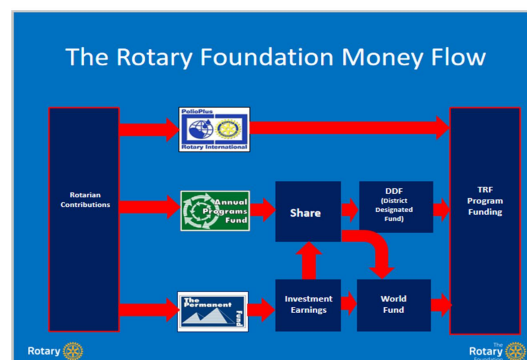
Rotary Foundation is rated as the No 1 in the United States – THUS the world

- **HOW TO DONATE**

Go on-line to My Rotary OR Australian Rotary Foundation Trust. Very simple process to make a donation.

Importantly a tax deduction receipt is available from both of these sites.

All Rotarians should aim to donate US\$100 per year and should be their primary charity



## Primary Rotary Websites for Club members

1. My Rotary (incl Rotary Foundation)  
[www.my.rotary.org/en/donate](http://www.my.rotary.org/en/donate) (All Rotarians should register to access their accounts).
2. District web site  
[www.rotaryd9710.org.au/foundation.html](http://www.rotaryd9710.org.au/foundation.html)
3. The Australian Rotary Foundation Trust  
[www.tarft.org.au/giving/donations-2/](http://www.tarft.org.au/giving/donations-2/)
4. Rotary Clubrunner – Bowral Mittagong Club site  
[www.bowralmittagongrotary.com/](http://www.bowralmittagongrotary.com/)
5. History of The Rotary Foundation  
[www.clubrunner.blob.core.windows.net/00000004409/en-ca/files/homepage/the-rotary-foundation-at-100-years/RotaryFoundationHistoryandFacts.doc.pdf](http://www.clubrunner.blob.core.windows.net/00000004409/en-ca/files/homepage/the-rotary-foundation-at-100-years/RotaryFoundationHistoryandFacts.doc.pdf)
6. Rotary Australia World Community Service (RAWCS)  
[www.rawcs.org.au](http://www.rawcs.org.au)

## December Birthdays

Imperial Lunch 12:00 Friday 13<sup>th</sup> Dec



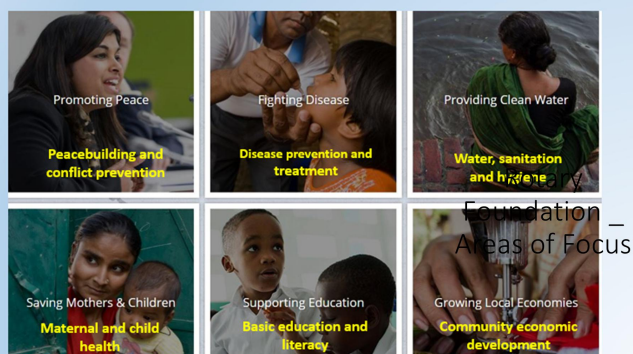
Ray Williams 19<sup>th</sup> December

A small group of 4 celebrated Ray Williams' birthday. A special thank you to Linda Hoelle for joining us for lunch.

The Imperial Birthday celebrations will recommence in February, 2020.

20<sup>th</sup> Febraury, Thursday

20<sup>th</sup> March, Friday.







## 2019 Christmas Market

*For All of Your Christmas Gift Ideas*

Visit our Many Stalls  
Buy Your Gifts

then

Enjoy a Scrumptious Devonshire  
Tea/Coffee with Freshly-Baked Scones,  
Jam & Cream, or a Light Lunch or  
BBQ Sausage Sandwich

---

**When: Sat Dec 14th 8.00am – 2.00pm**

**Where: Bowral Uniting Church (opp. Coles)**

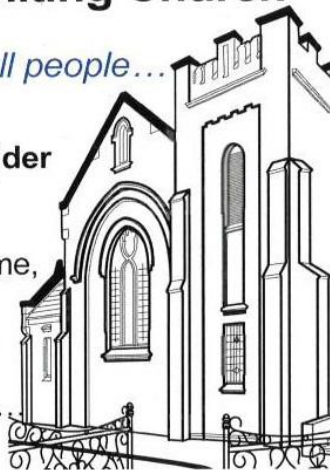


## Bowral Uniting Church

*... a church for all people ...*

**... As part of your wider  
community ...**

we offer a warm welcome,  
friendship and support  
for everyone to be part  
of our community...  
... a place to call home.



### **Join us for our Christmas Services:**

Advent Services - Dec 1, 8 and 15 @9.00am

Nativity Play – Dec 15 @11.30am + Lunch

Carols and Lessons – Dec 22 @9.00am

Christmas Day–All Ages–Dec 25 @9.00am

---

For more information on how we can be of  
service to you please call:  
Rev Michael Earl on **4862 1350**

# HOW YOU CAN HELP



**We are DA approved and shovel ready!**

## DONATE NOW

ON OUR WEBSITE:  
<https://shbg.com.au/donations/>

MAIL TO:  
PO Box 707  
Moss Vale, 2577

DIRECT DEPOSIT OR CHEQUE TO:  
BDCU Alliance Bank  
BSB: 902-101  
Account name: Southern Highlands Botanic Gardens  
Account number: 100071868  
Please add your name as the reference for the deposit

**MAKE A TAX DEDUCTIBLE DONATION**  
Contact us to make a tax deductible donation.

**Banter**  
GROUP

## HELP BUILD OUR EDUCATION CENTRE

The Education Centre will be the hub of the education function of the Southern Highlands Botanic Gardens. It will be a modern and dynamic facility providing an opportunity for community groups to hold and attend lectures, workshops and demonstrations in any weather.

**Southern Highlands Botanic Gardens**



# A MODERN DYNAMIC FACILITY



**CHARLIE ALBONE**  
PROMINENT LANDSCAPE DESIGNER

“The development of the South Highlands Botanic Gardens is a project I fully support and it continues to grow with the exciting new education centre. This part of the gardens will play a vital role in the development of the site, as well as becoming a place the community, schools and visitors will come to love and use on a regular basis...”

Charlie assists with SHBG fundraising and fully supports the project.



## WHAT IS THE COST FOR THE EDUCATION CENTRE?

The target funding amount is \$500,000, but we may need more. This cost includes the building construction, solar panels, air-conditioning, audio-visual equipment, kitchenette fit-out and essentials such as tables and chairs. We also need to landscape the immediate area and, although volunteers will be asked to assist with this part of the project, there is a cost for plants, irrigation and soil.

## WHO WILL USE THE EDUCATION CENTRE?

The potential users of this building are endless.

School children, who already come to the Garden, can have some of their Garden classes in-doors. We will welcome local garden clubs to come more frequently to hold meetings and workshops. The community at large can participate and enjoy special sessions on gardening techniques and the like.

Residents of retirement villages and nursing homes will have a new outing destination and be provided with information sessions on the Garden and horticulture subjects if they are unable to move easily around the Garden itself.

There is a chance to welcome all sectors of the community to attend dynamic events to be held in this modern building.

## A WELCOME FACILITY FOR COMMUNITY EVENTS

Our events program is growing. We need a building to make our events weather-proof and less prone to cancellation.

Workshops for kids to make solar lanterns and kites can be held in-doors instead of erecting tents. Art classes and exhibitions of art and photography are new and exciting events for this building.

Large community events, such as the Autumn Plant Fair, will be lifted to a higher dimension with the opportunity for guest presenters to 'hold court' on focus gardening topics in the comfort of a building. Our Earth Hour event can offer presentations for interest groups on night photography, star gazing, environmental subjects, a variety of visiting speakers can hold lectures in conjunction with major functions or as a solo event.

## WHERE DOES THIS EDUCATION CENTRE FIT INTO THE SHBG VISION?

A core aim of a botanic garden is to provide education to the public. Our vision is "to be the leader in displaying and researching both the exotic and native flora of the Southern Highlands; advancing the knowledge of horticulture, conservation and sustainability to the wider community."

In working towards this vision, our present adult education program will be expanded to include information sessions on endangered and threatened species, some of which will be planted in our native garden. Demonstrations will be held for the public on endangered flora, propagating their seeds, growing them and using low water principles in their garden.

## WHAT ARE THE FACILITIES IN THE EDUCATION CENTRE?

The building will be constructed of colorbond cladding, in keeping with the style of the current utility buildings. It will be located next to the Shed and will have big bifold doors opening to the north with a verandah on three sides. A small kitchenette will be at the rear. Solar panels are in keeping with our mission of being environmentally responsible.

The building will accommodate up to 50 individuals and the most up-to-date audio-visual equipment will form part of the fit-out, together with air conditioning.