



THE FOUR-WAY TEST
OF THE THINGS WE THINK, SAY OR DO

1. IS IT THE TRUTH?
2. IS IT FAIR TO ALL CONCERN?
3. WILL IT BUILD GOOD WILL AND BETTER FRIENDSHIPS?
4. WILL IT BE BENEFICIAL TO ALL CONCERN?

The Spoke Newsletter



Club 529 chartered March 16, 1925



Rotary
Club of Grass Valley



IMAGINE
ROTARY

BOARD OF DIRECTORS

[Andrew Jackson](#)
[Seth Leishman](#)
[Kris Stepanian](#)
[Heather Thorpe](#)
[Viv Tipton](#)
[Kim Zwick](#)

OFFICERS

President
[Sandra Barrington](#)
President Elect
[Sean Jackson](#)
Vice President
[Moe Allen](#)

Secretary
[Jennifer Malone](#)
Treasurer
[Bob Long](#)

Sergeant at Arms
[Ed Pinto](#)
The Spoke Editor
[Ryan Sykes](#)
Photographer
[Fred Claessens](#)
Executive Secretary
[Tim McCall](#)



Spoke Notes
by
[Larry McGrath](#)

[President of Rotary International](#)

[Jennifer Jones](#)

[2022-2023 Theme](#)

[- IMAGINE -](#)

[Governor of District 5190](#)

[Jeff Gabriel](#)

[April 3rd, 2023](#)

[www.gvrotary.org](#)

[Volume 97, Issue 29](#)

MEETING HIGHLIGHTS

April is Environmental Health month. Please go to [www.rotary.org/en/donate](#) and choose to help make a very positive difference in this world!

The Rotary Club of Grass Valley collected over 1,200lbs of plastic from several local business and had it recycled as a way to participate. What can YOU do to help?

Today, George Schureck, and his team spoke to our club about Accessory Dwelling Units (ADUs) and Junior ADU's (JADUs). Mr. Schureck is the Building Director from the [Building Department of Nevada County](#).

An ADU is an attached or detached dwelling unit up to 1,200 square feet. An ADU is also known as granny units, backyard cottages, etc. A JADU is a much smaller room (500 sq ft) within the home.

ADU



CONVERSION
Converted space within a single-family home or accessory structure (like a garage)



ATTACHED
A new unit attached to a single-family home (may include converted space)



DETACHED
New freestanding unit with a single-family home (can be site-built or prefabricated/manufactured)



MULTI-FAMILY
A detached, conversion, or attached unit within a multi-family building

JADU



JADU
Smaller unit of up to 500 square feet within a single-family home

They spoke to many frequently asked questions in their presentation. The team covered everything ranging from the permitting process, size restrictions, fire safety requirements, as well as several commonly faced setbacks.

This department has it's eyes on the future, and wants to ensure that the residents of this county have the most applicable and up-to-date information at their disposal.

Please contact the department if you have any questions!

UPCOMING MEETING PROGRAMS

Ray Ward	April 10th
Derek Williams	April 17th
Students of the Month	April 24th

UPCOMING ACTIVITIES

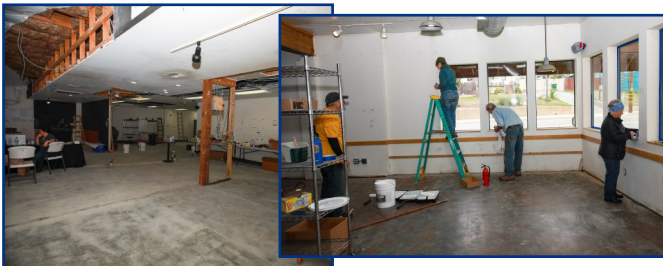
Bright Futures Storage Project	April 15th
Chicago Park School Playground Painting	April 22nd
District 5190 Conference	April 28th-30th
Community Awards	May 10th
Building a Storage Unit for NEO	May 15th
Gold Country Challenge Bike Ride	June 3rd

IMPORTANT MEMBER DATES IN APRIL

Birthdays		Rotary Anniversaries	
Connie Stone	Apr 9th	David Peeler	14 Yrs
Christian Eggleton	Apr 17th	Scott Spencer	18 Yrs
		Kris Stepanian	23 Yrs
		Patti Ingram-Spencer	27 Yrs

ANNOUNCEMENTS AND CONFESSIONS

Jonathon Walker would like to thank all that volunteered their time to prepare the newly built Senior Center for it's first coat of interior paint. Click [HERE](#) for additional images.



THOUGHT FOR THE DAY

"The choices that we make today will define our collective future. The choices may not be easy. But through awareness, technology, and a genuine global partnership, I am sure we can make the right choices. Let us all join together to beat plastic pollution and make this planet a beater place to live."
- Narendra Modi, Prime Minister of India

[Rotary Club of Grass Valley](#)

[P.O. Box 1213 Grass Valley, CA 95945](#)

Meets @ the [Wild Eye Pub](#)
on Mondays at 12:15 pm

[Area 4 Rotary Clubs](#)

[Penn Valley Rotary](#) meets @
[Players Pizza](#) every other Tuesday at 12 pm

[Grass Valley South](#) meets @
the [Litton Bldg](#) on Tuesdays at 7 am

[Nevada City Rotary](#) meets @
[The National Exchange Hotel](#) on the 1st and 3rd Thursday at 5:30pm & @ [Bistro 221](#) on the 2nd and 4th Thursday at 12:15pm - Please RSVP

[49er Rotary Breakfast Club](#) meets @
the [Miners Foundry](#) on Wednesdays at 7 - 8 am



THE FOUR-WAY TEST
OF THE THINGS WE THINK, SAY OR DO

1. IS IT THE TRUTH?
2. IS IT FAIR TO ALL CONCERN?
3. WILL IT BUILD GOOD WILL AND BETTER FRIENDSHIPS?
4. WILL IT BE BENEFICIAL TO ALL CONCERN?

The Spoke Newsletter



Club 529 chartered March 16, 1925

Rotary
Club of Grass Valley

IMAGINE
ROTARY

BOARD OF DIRECTORS

[Andrew Jackson](#)
[Seth Leishman](#)
[Kris Stepanian](#)
[Heather Thorpe](#)
[Viv Tipton](#)
[Kim Zwick](#)

OFFICERS

President
[Sandra Barrington](#)
President Elect
[Sean Jackson](#)
Vice President
[Moe Allen](#)

Secretary
[Jennifer Malone](#)
Treasurer
[Bob Long](#)

Sergeant at Arms
[Ed Pinto](#)
The Spoke Editor
[Ryan Sykes](#)
Photographer
[Fred Claessens](#)
Executive Secretary
[Tim McCall](#)



Spoke Notes
by
Patti Ingram Spencer

[President of Rotary International](#)

[Jennifer Jones](#)

[2022-2023 Theme](#)

[- IMAGINE -](#)

[Governor of District 5190](#)

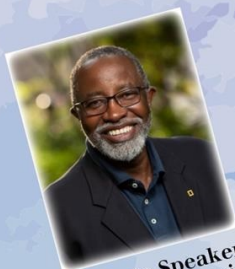
[Jeff Gabriel](#)

[April 3rd, 2023](#)

[www.gvrotary.org](#)

[Volume 97, Issue 29](#)

CELEBRATE, HAVE FUN, CONNECT



Keynote Speaker
Dr. John Francis
Environmentalist
Author



Keynote Speaker
Jake Willers
Wildlife Filmmaker
National Geographic Presenter

THE GATHERING

DISTRICT CONFERENCE 2023
Harrah's Loch Tahoe
April 28-30, 2023

[Register at district5190.org](#)

Rotary
District 5190

PEOPLE OF
ACTION



RI President's
Representative
Jason Browne



Special Presentation
Vicki Puliz
Director,
Rotary International



Keynote Speaker
Joey Vaesen
Rotary/Rotaract



Keynote Speaker
Luna Vaesen
Rotary/Rotaract



Beer Tasting with
Brewmaster Tom Young



Warren & Fannie Annis
Student Music Contest



Whisky Tasting with
Carl McDanel



Student Speech Contest



Tree Planting / Interpretive Walk



Please scan for
more information

[#Gathering2023](#)

Register and reserve hotel rooms [HERE](#)



THE FOUR-WAY TEST OF THE THINGS WE THINK, SAY OR DO

1. IS IT THE TRUTH?
2. IS IT FAIR TO ALL CONCERN?
3. WILL IT BUILD GOOD WILL AND BETTER FRIENDSHIPS?
4. WILL IT BE BENEFICIAL TO ALL CONCERN?

The Spoke Newsletter

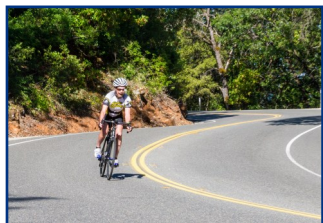
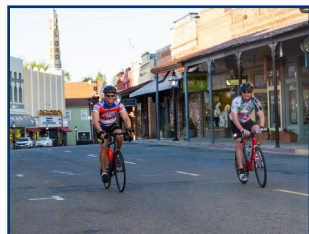
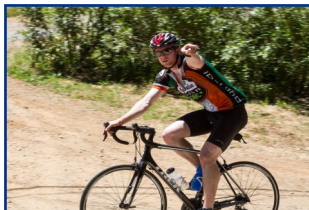
Rotary
Club of Grass Valley



IMAGINE
ROTARY



Club 529 chartered March 16, 1925



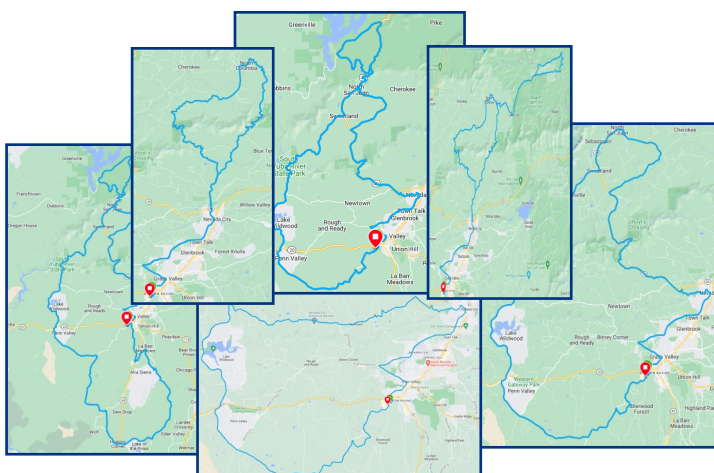
June 3rd

Ride the beautiful and historic back country of Nevada County. Nevada County was the heart of California's gold rush. Surrounding the charming mining era towns of Grass Valley and Nevada City, you'll ride through some of the most beautiful landscape California has to offer. Discover why the [Amgen](#) has selected to ride through Nevada County on multiple occasions.

Visit the [website](#) and pick from six different events

Rides will be fully supported and well-marked

Rides will begin at Gate 1 of the Nevada County Fairgrounds



click on each map for additional details

