



ROTARY CLUB of EAST HONOLULU

Weekly Meeting Monday at 12:00 Noon—Waialae Country Club



**President:
Jamie Apuna**

Officers and Directors

- President Elect Rory Lee
- *Past President Anne Komatsu
- *President Nominee John Strandberg
- *Secretary Ashli Taguchi Sasano
- *Treasurer Kawehi Akau & Jim Morris
- *Sgt. At Arms Tony Cara
- *Foundation Chuck Allen
- *Director at Large Bob Yee
- *Club Administration PDG Laura Steelquist
- *Membership Anne Komatsu and John Strandberg
- *Community Service Lauren Okinishi & Jodi Uehara
- *Youth Services Kathy Shiramizu
- *Intn'l Services Anne Komatsu
- *Public Relations John Strandberg & Jody Uehara
- *Bulletin Oran Spotts & Carleen MacKay

Club Duties for the 26th

Greater: Mark Gilden

Pledge: Tony Cara

Introductions: Jim Morris

4 way test: Oran Spotts

Inspiration: Pat Yee

Check our Website

<http://rotaryclubeasthonolulu.org/>

NEWSLETTER



Our guest speaker, **Carolyn Nataki**, was introduced by **Terri Madden**. She spoke passionately and purposefully about

www.littledressesforafrica.org., a global, not-for-profit Christian organization that provides dresses for little girls in order to help them to develop confidence as well as a sense of security in their very insecure lives. The dresses, made mostly from pillowcases, are simply made and quite pretty in a colorful way. Carolyn spoke of how we might donate but it was the stunning statistical evidence of need that brought listeners from a sense of compassion to a real sense of the opportunities to contribute. For example, we didn't know that in Malawi alone three out of every ten children die before their reach the age of five and 30 percent of those remaining die before the age of 10. They need our help to improve the quality of their lives and the opportunities for their futures.

Contributors may start a sewing group or, even, join a team going to Africa to offer relief. On a larger scale, over two million dresses have been sent to Africa as well as to other countries in need.



**District Governor
Dell Green**

Volume 2 Issue 13

October 19, 2015

Speaker Schedule

10-26-2015

Induction and fellowship

11-2-2015

Kim Chalekian

Brick House Fitness

11-9-2015

PDG Phil Sammer

11-16-2015

Mark Gilden

Salvation Army



Donna Prather introduced **Tina Ranoa** from Pacesetters. They both told us a little more about the program and invited attending Rotarians to join Pacesetters for a student-led training event at Iolani school on Wednesday evening the 21st of October. We also remind you that the November 21st meeting of Pacesetters is right around the next corner of time.



October 26th is our Halloween Social.

Pull out the costumes, dust off the masks and join us for next Monday's meeting. We will also induct two new members, as part of the festivities.



I just wanted to give you a heads up.

I will be in charge of "Rice Drive" on 11/21 and wondering if any of you can join me. My mother used to say that be grateful when you have the basics, roof over your head, food and clothes.

We can all make a difference by gifting them with one of the basics.

Please let me know if you can join me on 11/21 to organize and collect donations.

Here is a video and information about Angel Network Charities.

This helps to put a human face on the homeless of Kakaako. Aloha, Miho Miki May

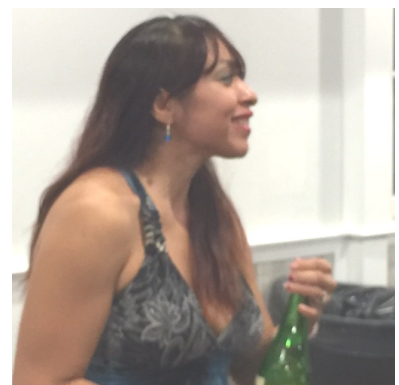
<https://www.youtube.com/watch?v=PI2wcWz2JiI>

Find out about Angel network Charities

<https://www.facebook.com/AngelNetworkCharities>

Saki/Sushi

All had a wonderful time with over 160 in attendance. Everyone is applauded with a great effort in ticket sales. Food was great and the Saki flowed.



Sexiest sox competition won by
Jack Hinton