



Kona Nightingale

The Newsletter for Rotary Club of Kona Mauka
Chartered in 1967



February 2016

President's Message

Gary Rovelstad

Bill Cliff



Speakers

Door Prize

February 2

Shirley David
West Hawaii Community Forum

Eric Curtis

February 9

Planning Mtg for fundraiser

Carol Giolatti

February 13

Valentine Wine Tasting Fundraiser!

February 16

Pamela Wang
Maintaining a Student Exchange

Richard Harrison

February 23

Nancy Sallee
Suicide Prevention Benefit in Kona

Dave Hiranaka

"Gary," Bill Cliff said to me. "You're the new sheriff. When you need something done, just ask." I knew Bill Cliff for entirely too short of a time, but, even so, it didn't take me long to see that what you saw and heard was what you got. 'Makes sense, I suppose. Annapolis grad, naval and commercial pilot, well-traveled and wryly funny (you do remember his tale about almost hitting his flight instructor with his plane) but serious when the need was there, Bill was an admirable and valuable member of our club and community. Those of you who knew him longer than I will have to help the rest of us remember all he did for our club and town.

Our club's records show that he was admitted to Kona Mauka in July of 2010, but some of your correspondence over the past weeks since his death and conversations that I had with him over the past two-plus years tell me that he was a Rotarian for more than just five or so years. More than one of you, for example, referred to him as a past Assistant District Governor which implies an earlier start in Rotary, and on more than one occasion he and I would talk about his time as a club president. Again leading me to believe that he had devoted a good part of his life to being a Rotarian.

I will take from Bill his focus on a task and his commitment to help others and get things done. Sometimes, even though he was the only one who could decipher the puzzling abbreviations that the Rotary Foundation uses, I could sense his frustration with its politics and bureaucracy when we tried to get grant money. Nonetheless, we got the money (I do wish he had left us a copy of his code book for the next person). When the money came, whether it was for dictionaries or projects in South Africa or other countries, we could rest easy knowing that Bill had done his homework and that the money would be well-spent.

Now it will be our turn to take your suggestions that we honor him by dedicating this year's Valentine's fund raiser to his memory, that our club establish scholarships in his name and, because he promoted cooperation with other clubs, joint projects with them that also remember the time he spent with us.

Rotary's 4 Way Test *Of the Things We Think, Say and Do*

Is it the TRUTH?

Is it FAIR to all concerned?

Will it build GOODWILL and BETTER FRIENDSHIPS?

Will it be BENEFICIAL to all concerned?

(AND ... Is it Fun??)

Our dear friend and fellow Rotarian, Bill Cliff



In Bill's words . . . November 2010:

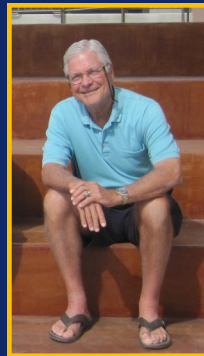
I am overwhelmingly grateful for the "gift of life." Not only that, I have been incredibly fortunate to have had a wonderful journey, always with "more than enough." Joy and good fortune have always outweighed life's pain and sorrows. I am aware that this journey is from point A, birth, on my way to point B, death. I am humbly aware that I have no birthright to any of this. I have had a good life, surrounded by those I love and who love me. Even if life ended tomorrow, I would be one of the fortunate ones.

I am guided by two quotes from Richard Bach;
"Every problem has a gift for you in its hands."

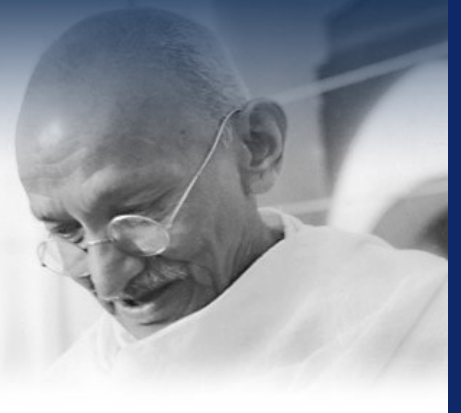
"Here is a test to find whether your mission on Earth is finished: If you're alive, it isn't."

Joined Rotary in September 2002
Joined Kona Mauka Rotary July 6, 2010

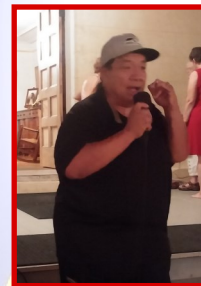
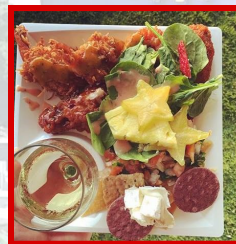
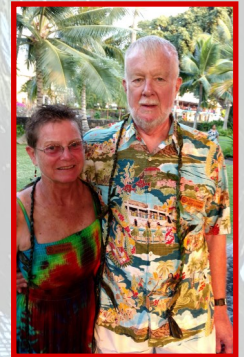
Left us January 26, 2016. Always in our hearts.



*"Be the change you wish
to see in the world."
Mahatma Gandhi*



Valentine's Wine Tasting Fundraiser: Oh What a Night . . .



Valentine Wine Tasting Fundraiser

A Wonderful Team Effort!

Page 4

Mahalo to Our Sponsors!

Title:

BMW of Hawaii
ChoiceMart Supermarket

Platinum:

Hawaiian Solar & Plumbing, Inc
Hawaii Trust & Estate Counsel

Gold:

David K Hiranaka, MD, DMD
Prince Pacific Management, LLC
Gary & Mary Kay Rovelstad
Shane Kitchens, AIA, Architect
John P Bunnell, DDS
David Toyomura at Morgan Stanley
Sam Choy
Dr. Frank & Laura Sayre
Daughters of Hawaii

Silver:

Taxpartners, LLC
Teshima Restaurant
Island Printing & Graphic



Mahalo from Co-chairs Don & Dave

Well! The thirteenth annual Valentine's Wine Tasting is now behind us! About a month ago, only 9 "donations" (tickets) had been sold. By the time we closed off selling a few days ago, we had a sellout!

Now all we had to do was deliver Kailua-Kona's signature event of the winter.

Thanks to members of our Rotary club, visiting Rotarians we pressed into service, and community supporters, we did not disappoint! In fact, we excelled. A job well done! The final numbers are not in yet, but we did well. This will allow us to continue our scholarships, international work and programs for our keiki and kupuna.

In addition to all our volunteers, we owe thanks to our very generous sponsors. Also thanks to those supporters who bid and bought at our Silent Auction. And to those who sponsored memorial scholarships.

There will be a Mahalo advertisement in West Hawaii Today with the names of all sponsors, donors and supporters.

Among all our very terrific donors, we want to especially draw your attention to two donors.

First, Hawaiian Solar. Not only were they a Platinum level sponsor, they generously donated \$5000.00 (which we will match with the same amount), to create a memorial scholarship of \$10,000.00! Wow!

Second, our very own Rhonda Kavanagh. Rhonda has donated \$5000.00 to be the first donation in memory of our club member, Bill Cliff, who recently passed away. Rhonda has agreed to let us decide what type of project or scholarship we want to give to honor Bill's memory. Outstanding Rhonda!

Lastly, the big surprise of the evening was Sam Choy. He had donated one "dinner for 10 at your home". After heated bidding, he sold three dinners for 10, raising \$4500 for each one of them! Thank you for your generous support.

Mahalo to all that made the event a success!

Happy Birthday Rotary!



Happy Birthday Kona Mauka Rotary **February 20, 1967**

The Rotary Club of Kona Mauka was chartered on February 20, 1967. The charter members of our club elected David "Di" Fraser as their first president. This was quite a distinction, for "Di" had also been the first president of the Rotary Club of Kona.



Rotary
Club of Kona Mauka

Charter Members of Kona Mauka Rotary

David Fraser, *President*
Chitose Abe
Reverend Norman Alter
Russell Apple, *Vice President*
Gilbert Ashikawa
Joe Beach, *Board Member*
Reverend Bob Brown, *Board Member*
Charles Campbell
Ed Crumpacker, *Secretary*
Fred Fujimoto
Janos Gereben
Henry Greenwell

Dr. Chisato Hayashi, *Board Member*
Ed Hedemann
Iwao Jyo
Takeshi Kudo
Masaji Sakamoto
George Thomas
Donald Thompson
Shizuo Uchimura
James Ushiroda
John Wirth
Masami Yamamoto, *Treasurer*
Yukio Yamamoto



Happy Birthday Rotary International! **February 23, 1905**

The world's first service club, the Rotary Club of Chicago, was formed on February 23rd, 1905 by Paul P. Harris, an attorney who wished to capture in a professional club the same friendly spirit he had felt in the small towns of his youth. The Rotary name derived from the early practice of rotating meetings among members' offices.

Rotary's popularity spread, and within a decade, clubs were chartered from San Francisco to New York to Winipeg, Canada. By 1921, Rotary clubs had been formed on six continents. The organization adopted the Rotary International name a year later.

As Rotary grew, its mission expanded beyond serving club members' professional and social interests. Rotarians began pooling their resources and contributing their talents to help serve communities in need. The organization's dedication to this ideal is best expressed in its motto "Service Above Self".

FEBRUARY IS PEACE & CONFLICT RESOLUTION MONTH

PEACE & CONFLICT RESOLUTION MONTH

FEBRUARY IS



**PEACE AND CONFLICT
PREVENTION/RESOLUTION
MONTH**

"Imagine all the people living life in peace..."
John Lennon

Rotary  

www.rotary.org

ROTARY'S AREAS OF FOCUS



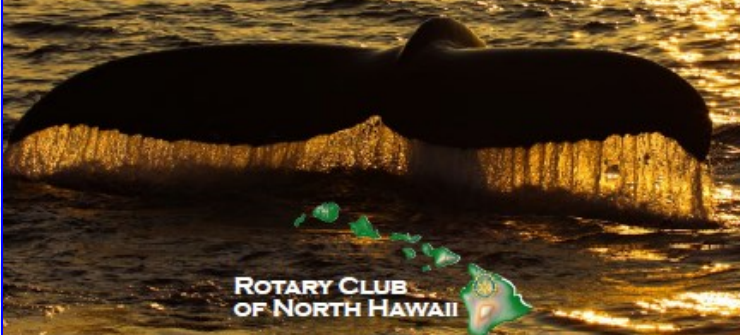
Sixty million people are displaced by armed conflict or persecution, and 90 percent of armed-conflict casualties are civilians, half of them children. Through service projects, fellowships, and other Rotary-sponsored campaigns, members train adults and young leaders to prevent and mediate conflict, and aid refugees who have fled dangerous areas. Members also pursue projects to address the underlying structural causes of conflict, including poverty, inequality, ethnic tension, lack of access to education, and unequal distribution of resources.

JOIN ROTARY FOR A SUNSET WHALE SAIL

Friday, March 4, 2016. 4:00 check in; 4:30—6:30 cruise

Meet at the Alala in Kawaihae

Proceeds to benefit Rotary Youth CAMP
THIS IS A FUNDRAISER- INVITE YOUR FRIENDS!



\$75 includes Pupus and Refreshments
Contat Erik Jacobson at 345-9033



2016 District 5000 Conference *At the Beautiful Halekulani* June 10-12, 2016



February

In life, sometimes the experiences that matter the most are the briefest. They pass in the blink of an eye: a few days, a few hours, a few moments. They are the experiences that illuminate the landscape of our memory, shining brightly even years later. They are the moments in which we see, suddenly, something we had not seen; we understand something we had not understood; we forge a connection we had not expected.

For me, this has been a Rotary year like no other. I have been around the world, traversing countries and continents. I have been to places I had never seen before, and I have returned to familiar places and seen them, as for the first time, through the lens of Rotary.



When you travel for Rotary, you travel with a different sense of perspective and a different sense of purpose. There is an awareness of being part of something larger than yourself. When you board a plane or a train, or leave your home in the dark hours of early morning, you may be leaving for lands unknown – but at your destination, there will be no strangers. There will be Rotarians, waiting and welcoming. There will be work to do, something to learn, and perhaps something to teach.

There will be connections to forge, friendships to build, and memories to carry for a lifetime. This year, I have been the traveler, and I have been welcomed by Rotarians around the world. A few months from now, from 28 May to 1 June, I invite you to step into my experience: allow me to welcome you to Seoul for our 107th International Convention.

The Koreans have a saying: 사람이 나면 서울로 보내라. In English we would say, "When a person is born, send them to Seoul." For Seoul is a city of opportunities: a wonderful destination with rich traditions, modern conveniences, and a culture unlike any other. But I ask you to join me in Seoul not only for all of this, but also for the experiences you will have there with your fellow Rotarians.

For a brief moment in time, you will experience Rotary as I have experienced it: in all its diversity, all its warmth, and all its potential. You will be greeted as an old friend by people you have never met; you will share your thoughts, even without a shared language. You will learn with wonder of what Rotary has achieved, and leave inspired to achieve even more.

Before this Rotary year comes to its close, I ask you to do what I have done: to leave your homes, to board your flights, to travel toward the unknown with an open heart and an open mind, confident that Rotary will welcome you. Join me, and your fellow Rotarians, as we Connect with Korea – Touch the World.

February

Fellow Rotarians,

Within our global community, sixty million people are displaced by armed conflict or persecution; 90 percent of armed-conflict casualties are civilians and half of those are children. Thankfully, we don't live under those conditions, but have opportunities, through Rotary's various avenues of service and fellowship, to train adults and young leaders to prevent and mediate conflict, and aid refugees who have fled dangerous areas. Rotarians also pursue projects that address underlying structural causes of conflict, including poverty, inequality, ethnic tension, lack of access to education, and unequal distribution of resources.



Here are some ways that you can get involved in this month's area of focus: Peace and Conflict Prevention/Resolution:

Support Rotary Peace Centers: six peace center located around the world develop leaders who become catalysts for peace and conflict prevention and resolution in their communities and around the globe. Graduates of the program are reintegrating refugees in Sudan, creating jobs for disadvantaged women in India, and supporting reconstruction in devastated regions of the world.

Support Peace Fellowships: each year, 100 individuals are selected from around the world to receive fully funded academic fellowships at the above mentioned Peace Centers. A master's degree and professional development certificate are also available.

Start, sponsor, or participate in a peace project: visit ideas.rotary.org to learn about available projects.
Join the Rotary Action Group for Peace (rotarianactiongroupforpeace.org)

In January 2013, Hawaii hosted the Hawaii Peace Forum where the keynote speaker was Daw Aung San Suu Kyi, founding member of Burma's National league for Democracy and Nobel Peace Laureate (1991) for her "non-violent struggle for democracy and human rights." This event brought peace and conflict resolution to our front yard. I hope you will join me in refocusing, this month, on this important topic for Hawai'i and the world.

Mahalo for all you do to be a Gift to the World.

Our Leadership Team



Rotary International
President
K.R. "Ravi" Ravindran



District 5000
District Governor
Del Green



D5000 Hawaii West
Assistant Governor
Donna Hiranaka




Rotary Club of Kona
Mauka President
Gary Rovelstad

What's Happening in Rotary This Month?

February

Peace & Conflict Resolution Month

Sun	Mon	Tue	Wed	Thu	Fri	Sat
	1	2 Shirley David WH Community Forum	3	4 Leonora Birthday	5 Dave Birthday	6
7 Dave & Donna anniversary	8	9 Planning Mtg: Valentine Fundraiser	10	11 Rhonda joined Mauka Rotary 2014	12	13 
14	15	16 Pamela Wang Maintaining Exchange Student	17	18 Joe, Steve & Annu joined Rotary 2014	19	20
21	22	23 Nancy Sallee Suicide Prevention	24 Kent Birthday	25	26 Karen joined Rotary 2008	27
28	29					

Rotary Club of Kona Mauka 2015-2016

President:	Gary Rovelstad	Membership & Retention:	Dave Hiranaka
Treasurer:	Eric Curtis		Carol Gigliotti
Secretary:	Sharon Taylor		Tony Calumet
Vocational:	Donna Hiranaka	Community Service:	Sharon Taylor
Club Service:	Laura Kniffin		Awa HuiHui-Graffe
	Leonora Prince		Bob Shaible
Programs:	Ken Obenski	RI Foundation:	Bill Cliff
Newsletter:	Donna Hiranaka		Rhonda Kavanagh
Interact:	Tammy Shafer-Walker	International Service:	Bill Cliff
Youth Services:	Chris Leinenweber	Past President:	Larry Kniffin
Public Relations:	Rhonda Kavanagh	Jubilee Committee Chair:	Don Taylor
Scholarships:	Chris Leinenweber	President Elect:	Sharon Taylor
Sergeant At Arms:	Ken Obenski	KMR Foundation President:	Don Taylor
		Events Chair:	Dave Hiranaka / Don Taylor