

# ROTARY CHERRY BLOSSOM TRAIL

---

*HUNT* ENGINEERS | ARCHITECTS | SURVEYORS

8/2/21

# AGENDA

---

- PROJECT BACKGROUND
- SCHEDULE
- EXISTING CONDITIONS
- DESIGN
- PLANTINGS

# PROJECT BACKGROUND

---

- The **Rotary Cherry Blossom Trail** is **FUNDED** through a collaboration between the Rotary- the Rotary Sustaining Fund, Crystal City Parks Foundation, Disc Golf Association, Corning Enterprises, Inc., the Community Foundation of Elmira-Corning and the Southern Finger Lakes, and the City of Corning
- **DESIGN SERVICES** provided by HUNT-EAS will be donated by the Rotary to the City of Corning.
- **PROJECT MANAGEMENT** will be handled by the City of Corning.
  - To include the purchasing and oversight of tree installation with the possible assistance of a landscaper, volunteers.

# THE TRAIL; DENISON PARK



# SCHEDULE

---

- SCHEMATIC DESIGN

- June – July 2021

- Stakeholder Meetings:

- Meeting 1: Disc Golf Association Review 06.25.21
    - Meeting 2: Schematic Design, Plant Selection 07.09.21
    - Meeting 3: Final Design and Imagery 07.23.21

- FINAL DESIGN

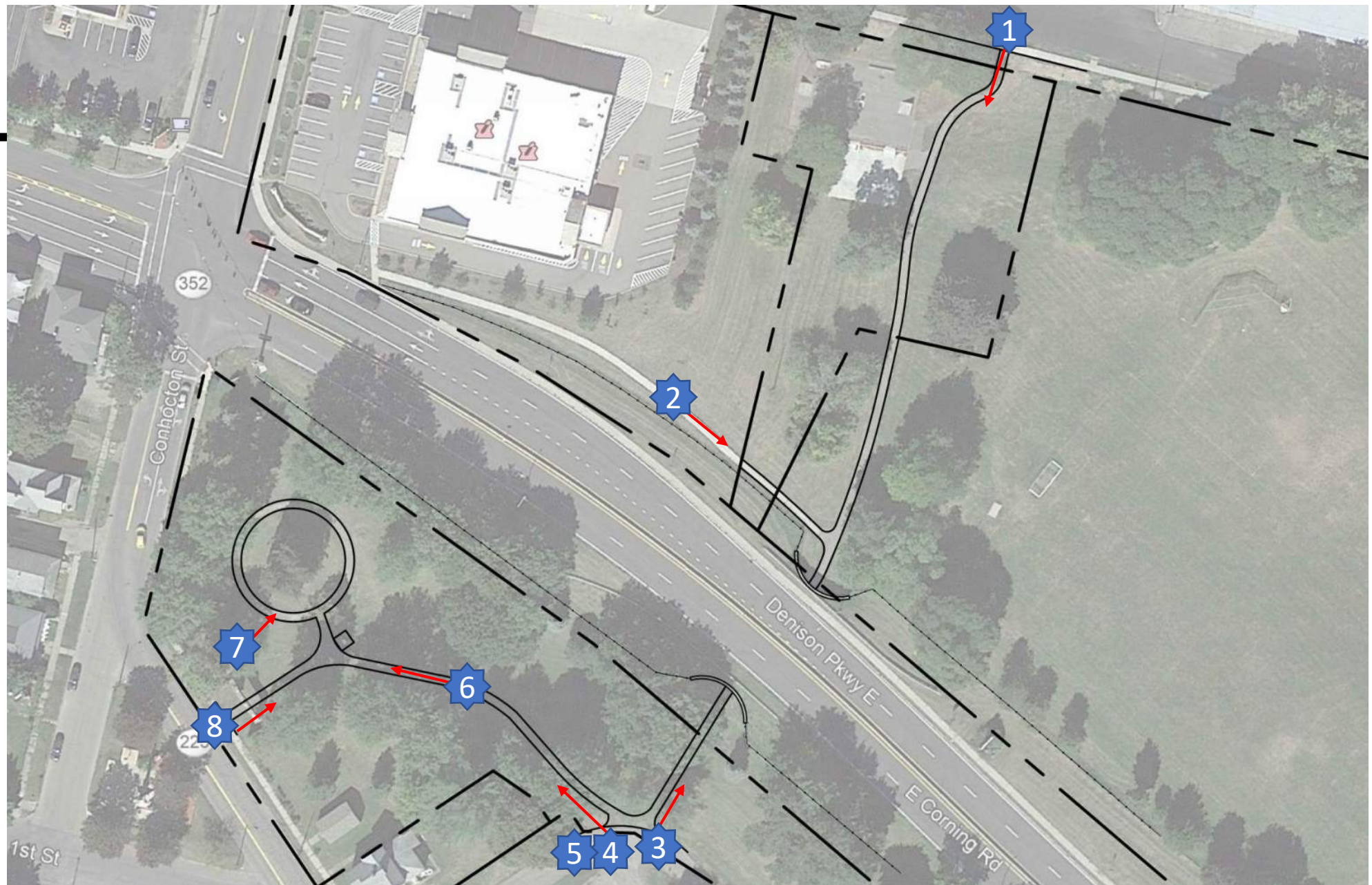
- Deliverables to client 08.02.21

- PLANTING

- Staking and planting fall 2021



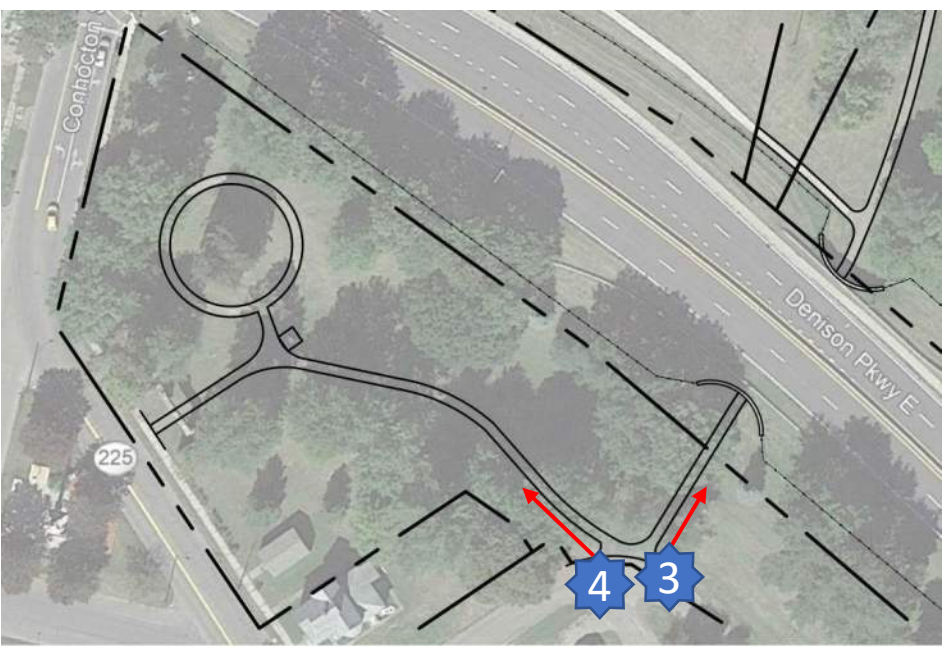
# Existing Conditions



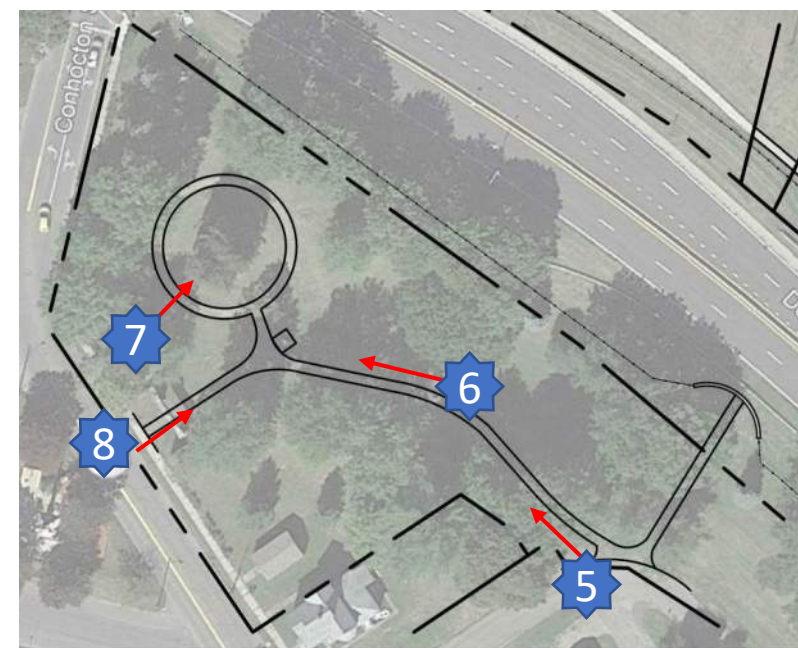














# Final Design

## “Groves”

- 40 Cherry Trees
- 3 Multi-stem Trees
- 33 Shrubs



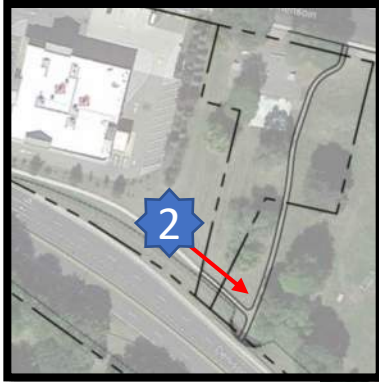




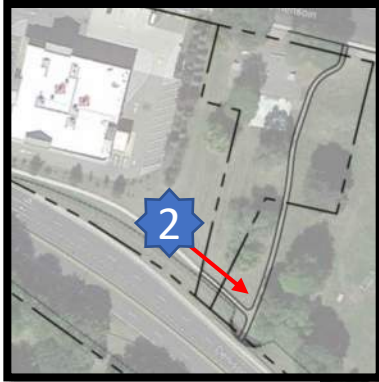




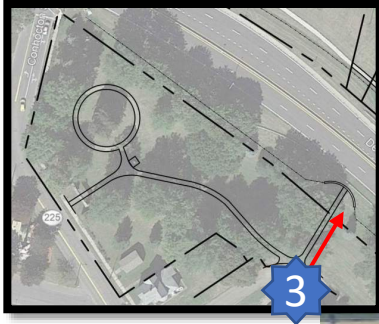




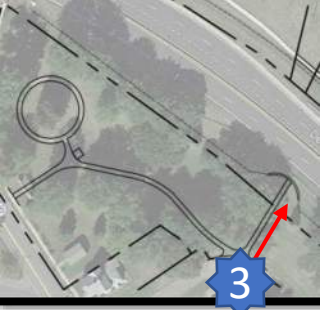




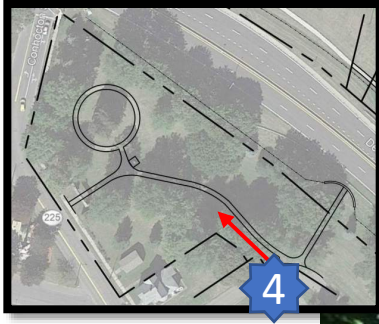




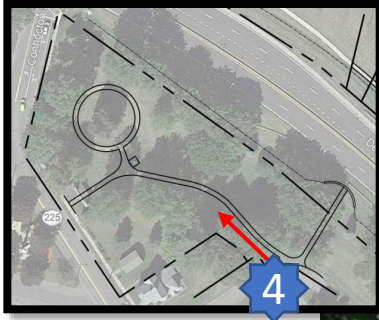








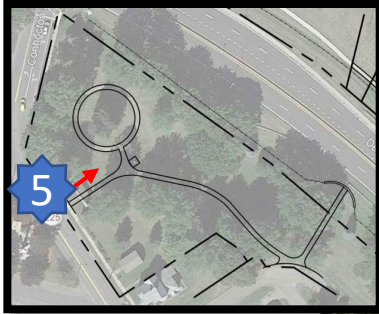




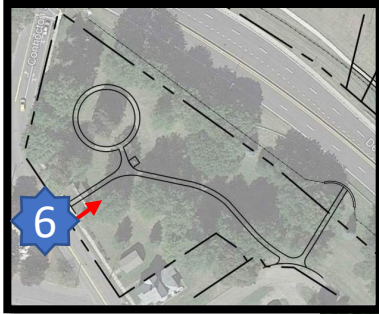




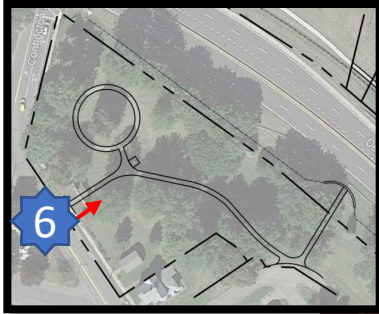










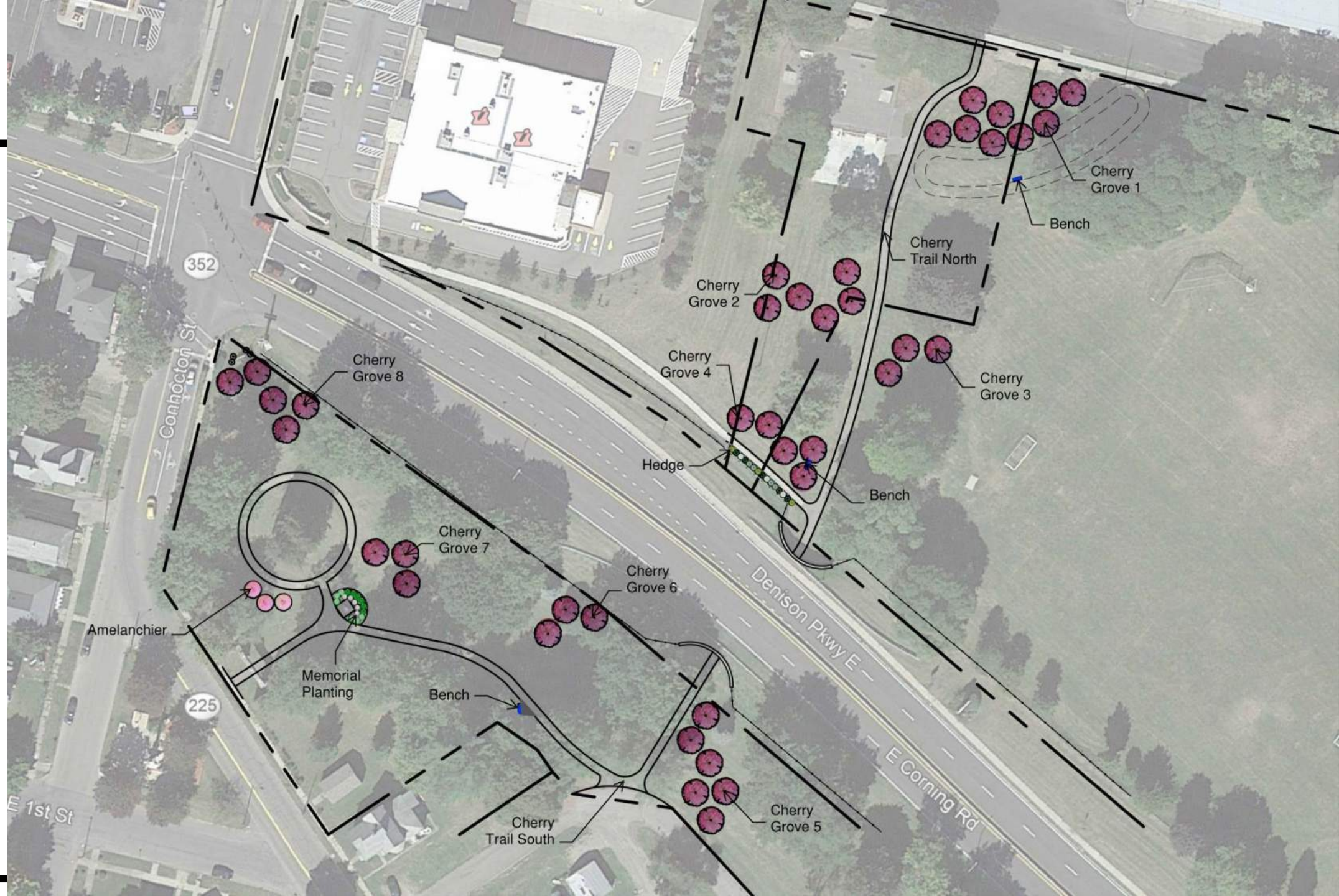




# Final Design

## “Groves”

- 40 Cherry Trees
- 3 Multi-stem Trees
- 29 Shrubs





# Cherries

---

- Typically bloom April-May
- Prefer 6-8 hrs of sunlight per day
- Prefer well drained soils
- Typically live 25-30 years
- Spacing is dependent on the mature height of the tree.
- Are divided into sweet and sour camps
  - Sour = always self pollinating; smaller; usually more cold-hardy
  - Sweet = traditionally non-self pollinating but new varieties do self pollinate



# Cherry Varieties

---

- ***Prunus sargentii*** – Sargent Cherry
  - 'Accolade'
  - 'Pink Flair'
  - 'Princeton Snowcloud'
- ***Prunus subhirtella*** - Higan Cherry
  - 'Autumnalis'
  - 'Whitcomb'
- ***Prunus x yedoensis*** - Yoshino Cherry
  - Yoshino Hybrid
  - 'Akebono'
  - 'Cascade Snow'
- ***Prunus serrulata*** – Japanese Cherry
  - 'Kwanzan'



# *Prunus sargentii* – Sargent Cherry

- **'Accolade'** – hybrid; upright vase shape; semi-double red-pink blooms; 25'H x 20'W, late March-April
- **'Pink Flair'** – upright vase shape; 25'H x 15'W, flowers 1-2 weeks later than Accolade (avoiding late frosts)





# *Prunus subhirtella* – Higan Cherry

---

- 'Autumnalis' – hybrid;  
semi-double red-pink  
blooms 25'H x 20'W,  
late March-April  
(about 1 week before  
Yoshino)
- 'Whitcomb' – hybrid;  
semi-double red-pink  
blooms 25'H x 20'W,  
late March-April





## *Prunus x yedoensis*

### Yoshino Cherry

- Yoshino– Most famous cherry, hybrid; single pale pink blossom, 30'H x 30'W, late March-April



## *Prunus serrulata*

### Japanese Cherry

- 'Kwanzan' – Readily available; prone to some minor diseases, double pink flowers, 25'H x 25'W, flowers 1-2 weeks later than 'Yoshino'





# Additional Plantings

---

- Goal is to extend the blooming periods for the trail; target time frames are early spring (pre-April) and summer-late summer (May-Aug)
- Low maintenance trees/shrubs are preferred for ease of care
- Use of naturalized or native species where possible
- Parks are eliminating the use of mulch- so plantings outside of trees should be limited; exception to be at the memorial.
- Memorial
  - Simple, traditional plantings that enhance the memorial and are in keeping with the historic arch and formal paths nearby
    - Little Lime Hydrangea
    - Boxwood Baby Gem





# ADDITIONAL PLANTINGS

Corning, NY USDA Zones: 5b: -15°F to -10°F

SYM	QTY	SIZE	BOTANICAL NAME	COMMON NAME
AA	3	MS, min. 6'-0" height	Amelanchier alnifolia 'Autumn Brilliance'	AUTUMN BRILLIANCE SERVICEBERRY
BW	9	5 gal	Buxus sempervirens 'Wintergreen'	WINTERGREEN BOXWOOD
CA	6	5 gal	Cornus alba 'Ivory Halo'	IVORY HALO DOGWOOD
FM	3	5 gal	Forsythia 'Meadowlark'	MEADOWLARK FORSYTHIA
HL	6	5 gal	Hydrangea 'Little Lime'	LITTLE LIME HYDRANGEA
IM	5	5 gal	Ilex x meserveae 'Blue Prince'	BLUE PRINCE HOLLY

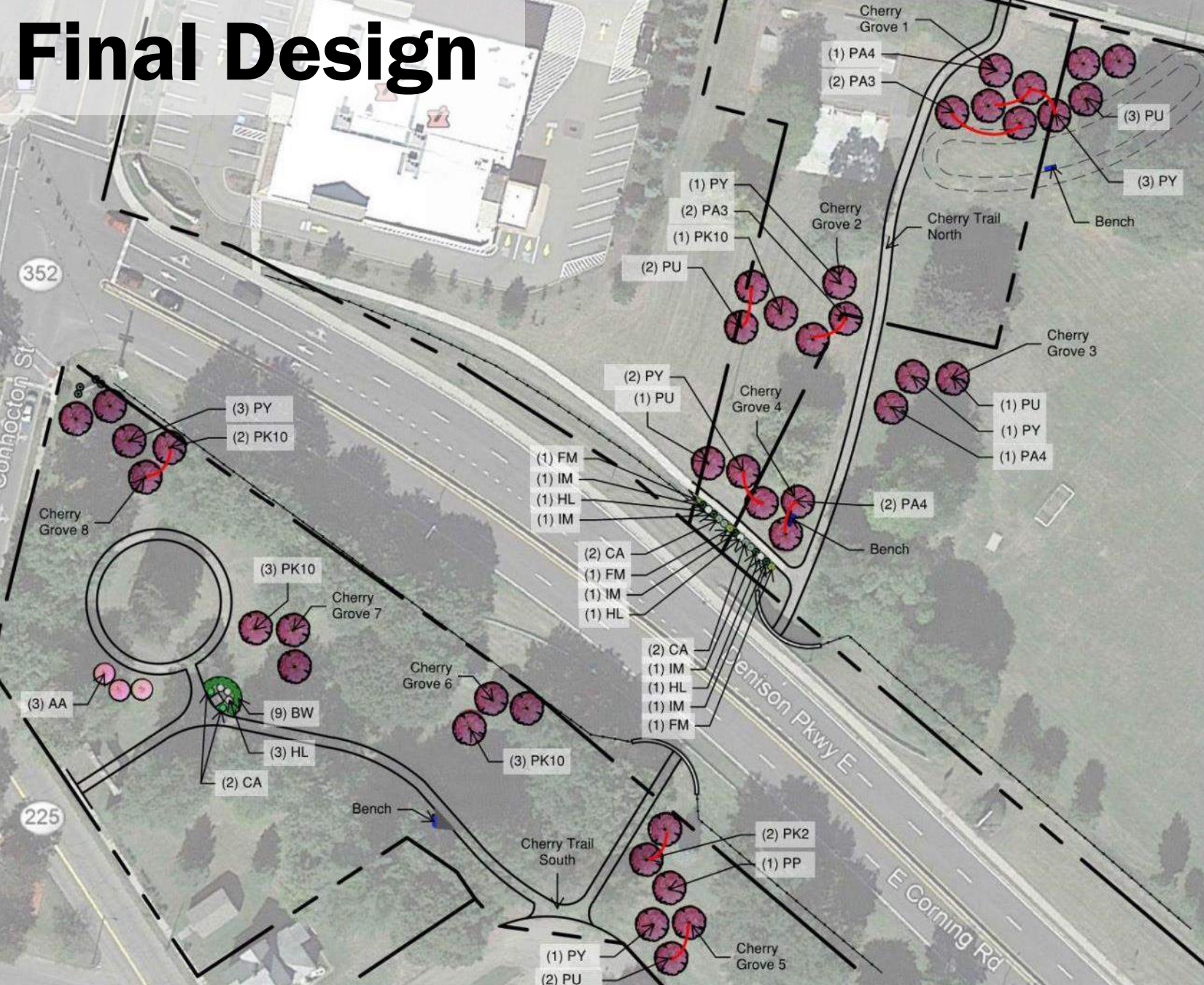


29 Shrubs

3 Multi-stem Trees



# Final Design



## PLANTING SCHEDULE

Corning, NY USDA Zones: 5b: -15°F to -10°F

### TREES

SYM	QTY	SIZE	BOTANICAL NAME	COMMON NAME
PA3	4	3"-3.5"	<i>Prunus sargentii</i> 'Accolade'	ACCOLADE SARGENT CHERRY
PA4	4	3.5"-4"	<i>Prunus sargentii</i> 'Accolade'	ACCOLADE SARGENT CHERRY
PP	1	#15	<i>Prunus sargentii</i> 'Pink Flair'	PINK FLAIR SARGENT CHERRY
PK2	2	2.5"-3"	<i>Prunus serulate</i> 'Kwanzan'	KWANZAN CHERRY
PK10	9	#10	<i>Prunus serulate</i> 'Kwanzan'	KWANZAN CHERRY
PU	9	#30	<i>Prunus subhirtella</i> 'Autumnalis'	AUTUMN HIGAN CHERRY
PY	11	#30	<i>Prunus x yedoensis</i> 'Yoshino'	YOSHINO CHERRY

### SHRUBS

SYM	QTY	SIZE	BOTANICAL NAME	COMMON NAME
AA	3	MS, min. 6'-0" height	<i>Amelanchier alnifolia</i> 'Autumn Brilliance'	SERVICEBERRY
BW	9	5 GAL	<i>Buxus sempervirens</i> 'Wintergreen'	WINTERGREEN BOXWOOD
CA	6	5 GAL	<i>Cornus alba</i> 'Ivory Halo'	IVORY HALO DOGWOOD
FM	3	5 GAL	<i>Forsythia</i> 'Meadowlark'	MEADOWLARK FORSYTHIA
HL	6	5 GAL	<i>Hydrangea</i> 'Little Lime'	LITTLE LIME HYDRANGEA
IM	5	5 GAL	<i>Ilex x meserveae</i> 'Blue Prince'	BLUE PRINCE HOLLY

\*Note that sizing is listed according to current availability in the area. Ideal sizes remain for trees 2"-2.5" CAL or 6'-0" height for MS, and for shrubs 5 GAL. See attached quotes for availability.



# ROTARY CHERRY BLOSSOM TRAIL

---

*HUNT* ENGINEERS | ARCHITECTS | SURVEYORS