

Rotary

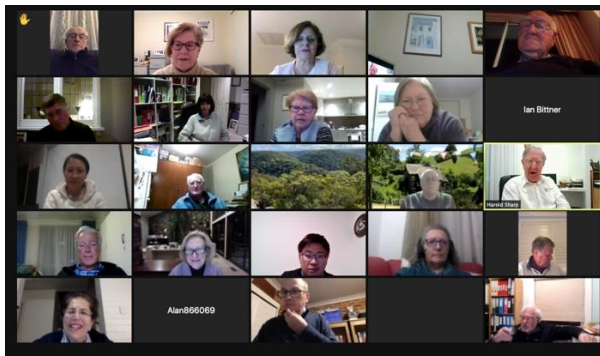
Club of Epping



**2 August
2021**

President's Corner

It was good to see you all on Monday evening and Toula and I thank you for joining the meeting. Dealing with technology which doesn't always go to plan for both attendees and guest speakers, can be challenging! Our meeting was well attended and as John Corney said 'It is great to spend an hour with good friends!'



ROMAC

Harold Sharp's presentation on ROMAC was most informative. The video clearly provided details on what ROMAC is, its objectives and the many success stories of children who have been given a second chance at life. Harold added further stories and mentioned that a recipient of ROMAC's support, Rosie from Fiji, will be a guest speaker at the District Conference in March next year.

<https://www.romac.org.au/>



What is ROMAC?

- ROMAC is “**Rotary Oceania Medical Aid for Children**”
- An Official Rotary International Program
- Established and managed by the Rotary Districts of Australia and New Zealand
- ROMAC is run entirely by volunteer Rotarians



DOCTORS / NURSES / PHYSIOS / HOSPITALS

- Surgeons and other medical practitioners are extremely generous with their time and their skills
- Surgeons and medical facilities are among the world's best – that's why we bring patients to Australia & New Zealand
- Surgeons find they gain valuable experience, not normally available here, in treating some of the unusual problems presented with ROMAC patients – they then use these experiences to benefit Australian and NZ children



ROMAC Mission

To provide specialist treatment for children, from developing countries in the Southwest Pacific, in the form of life saving and dignity restoring surgery not accessible to them in their home country.



Where do they come from?

Priority is given to children from developing countries that are part of our Australian and New Zealand Rotary

Districts:

**Timor Leste PNG Solomon Islands
Vanuatu Tonga Fiji**

Like so many NFP organisations, ROMAC has been hit hard by Covid - meaning no new children have been brought into Australia for well over a year. There are 40 children on the waiting list, 20 of whom are from East Timor. With a yearly budget of \$750,000 - \$1million, and no government funding, ROMAC relies on the donations of individuals and Rotary Clubs across Australia and NZ for support. Disappointingly, only 20% of Rotary Clubs donate to ROMAC. I am pleased that Epping Rotary has made a recent donation of \$1000. The request from Harold was to please spread the word!

Rotary Masks

Kaye Carter, President of Pennant Hills Rotary Club is asking if Rotarians in the Hills Cluster group would be interested in purchasing good quality face masks, with the Rotary logo, at the cost of \$20. A straw poll on Monday night saw that 10 or so people would be interested. As a minimum order of 250 is required, Kaye needs to feel confident, they could all be sold. If you are interested, please email Toulou or me (even if you put your hand up on Monday night).



Next week

We will be 'Zooming' again next Monday night, 9 August. We will open up at 6.30pm for fellowship before our presentation on the plight of Madagascar commences at 7pm. We will welcome a guest from Poland, Margaret Klein, and the President of Toliara Rotary Club Madagascar, Dr Paubert Mahatante, to our meeting. To prepare for this, Olga Scaramuzzi has requested we read up on what is happening in Madagascar. An article was sent to all members by Deretta on 22 July. You will find a copy attached along with this RIM.

We will be 'Zooming' again next Monday night, We will open up at 6.30pm for fellowship before our presentation commencing at 7pm.

Link to Join Zoom Meeting

<https://us02web.zoom.us/j/5526138035?pwd=ZVRMTnRwTEdPYndKUUFkYUVjT2J0QT09>

Meeting ID: 552 613 8035

Passcode: 866069

Lockdown Links

During these times of lockdown, life can be difficult, so we ask that you take the time to phone a fellow Club member to see how they are going. I am sure it will be beneficial for the caller and receiver alike!

Epping Rotary Changeover

The Changeover will definitely take place on **Monday 23 August, 6.30pm – 8pm** on Zoom and we are pleased to be inducting Ying during this special occasion.

Narelle

What is Coming Up

Date	Venue	Organisation	Speaker
9th August	Zoom	Madagascar Video	Mrs Margaret Klein
13 August	Zoom	Friday Trivia	Ian Bittner "Trivia Master"
16th August	Zoom	MITO	Toni Catton
23rd August	Zoom	Changeover	
30th August	TBA	Anglicare	Magnus Linder
6th September	TBA	Shine for Kids	Andrew Keo
13th September	TBA	Social Night ???	
20th September	TBA	Inner Wheel	Robyn Mackey

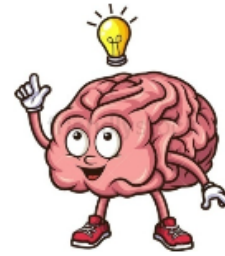
Epping Rotary Trivia – an event not to be missed**Link to Join Zoom Meeting**

<https://us02web.zoom.us/j/5526138035?pwd=ZVRMTnRwTEdPYndKUUFkYUVjT2J0QT09>

Rotary
Club of Epping



TRIVIA NIGHT



DATE: Friday 13 August, 7.00pm

VENUE: ZOOM, by our **Trivia Master Ian Bittner**
Meeting id **552 613 8035**
Password **866069**



Great Prizes to be won, why not join in and test your knowledge ?

Madagascar Famine

Here is a report on the food situation. Please read it prior to next Monday's meeting

The fuller report is attached to the RIM email

Projected Acute Food Insecurity | October - December 2021



1.31M

Around 1.31 million people out of the 2.7 million people of the Grand South of Madagascar analysed are likely to face high levels of acute food insecurity (IPC Phase 3 or above) between October and December 2021, of which nearly 28,000 people are likely facing Catastrophe (IPC Phase 5).

Overview of the Projected Food Security and Nutrition Situation

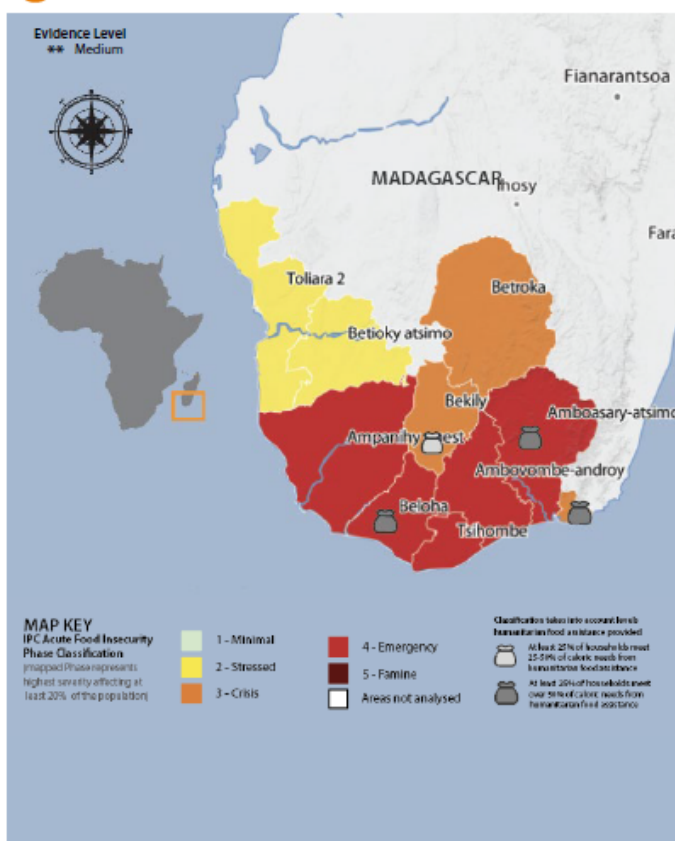
During the projected period from October to December 2021, corresponding to the lean season period, with insufficient food stocks, high prices of staples due to COVID-19 and related restrictions and poor employment opportunities, the food situation will likely worsen, bringing the number of people in IPC AFI Phase 3 or above to 1.31 million. The population in Catastrophe (IPC Phase 5) will likely double, and the number of people in Emergency (IPC Phase 4) or worse, will likely exceed 510,000. The district of Betioky will be added to the list of districts in IPC Phase 3 (including Betroka, Bekily, and the five communes of Taolagnaro).

With regards to the nutritional situation, through December 2021, the situation will likely improve for one district (Toliary II) due to the decrease in morbidities. Despite the expected deterioration in the nutritional situation during this period, no change in phase is expected in the other districts analysed, except in one district (West Ampanihy) where the nutritional situation is very volatile. To this end, the district will move from the Alert phase (IPC AMN Phase 2) to the Serious phase (IPC AMN Phase 3).

From January 2022 onwards, the peak of the lean season, if no action is taken, the deterioration of the nutritional situation will be more significant as this corresponds to the peak period of acute malnutrition cases. This deterioration will likely lead to a change of phase for five districts, of which four districts - Amboasary-Atsimo, Belohia, Tsihombe and West Ampanihy - will move to the Critical phase (IPC AMN Phase 4) and one district (Betroka) to the Serious phase (IPC AMN Phase 3). An increase in the incidence of diseases is expected over both projection periods, thus increasing the vulnerability of children to malnutrition over these periods in addition to the expected deterioration in food insecurity.



Projected Acute Food Insecurity | October - December 2021



RIM ARTICLES

Please send RIM articles to Alan at alan.baker.om@gmail.com or secretary@eppingrotary.org.au