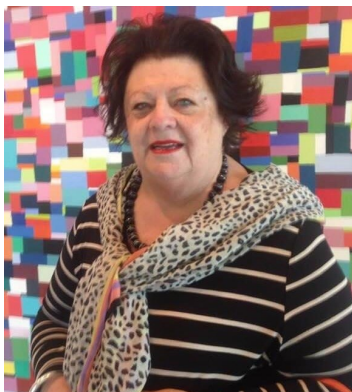




CHARTERED 16TH AUGUST 1928. CLUB NO. 18035, DISTRICT 9685.

(Please Note: No meeting on the last Thursday of each month). ISSUE NO 4044 Thursday 29th October 2020



President's Message:

Dear Rotarians,

At our last meeting we heard from Jeff McDougal and his endeavours you teach and re teach seniors to drive . He explained the reasons some seniors needed some extra tuition to pass the driving test. Lack of confidence and deafness is often a cause for failing a test. It was a very interesting talk.

Our club has donated \$700 towards Polio Now with thanks for the \$500 donation from an ex member.

I am progressing with the flag initiative and will meet with Nth Sydney Council next Tuesday . They are very keen to assist with the project.

I have issued 6 Rotary Certificates of Community Service to local schools and hopefully more will take up the offer in the next few weeks of term.

The President's Zoom meeting last week emphasised the need for everyone to take responsibility to introduce more members and to have a health check on ones club to make sure it is up to date and spontaneous for new members. I can say that we as a club have an excellent report card .

Board Members for Rotary year 2020-2021

President: Toni Field OAM **Secretary:** Tony d'Arbon **Treasurer:** Doug Garner
Administration: Ross Waugh **Youth Counsellor:** David Field
Community Service, Membership: Jenny Thomas OAM **Public Relations:** Lily Clarke
International Service: Samantha Lee & Jiji Lee, **Youth Service:** Peter Lulic
Vocational Service: Geoff Pritchard OAM **Speaker Program:** David Field
District Conference/Verification Officer: Denis Booth **Bulletin Editor:** Mal Sharpe

Acknowledgement of Country.

The Rotary Club of Nth Sydney acknowledges the Cammeraygal people on whose land we meet each week and continues to foster friendship and service to the community. We pay our respect to past and present elders.



www.facebook.com/rotarynorthsydney/



**"For Good Food, Good Fellowship and
the Opportunity to serve through
Rotary, we give thanks".**



Presidents Message continued...

Giving a bottle of wine to our guest speakers has become a little onerous as it seems it is the same persons donating the wine. At the Presidents meeting it was suggested that wine not be given as this encourages 'drinking' !!!! Anyway I am purchasing boxes of chocolates from club funds to give as a gift for the following months . I hope you all are happy with this.

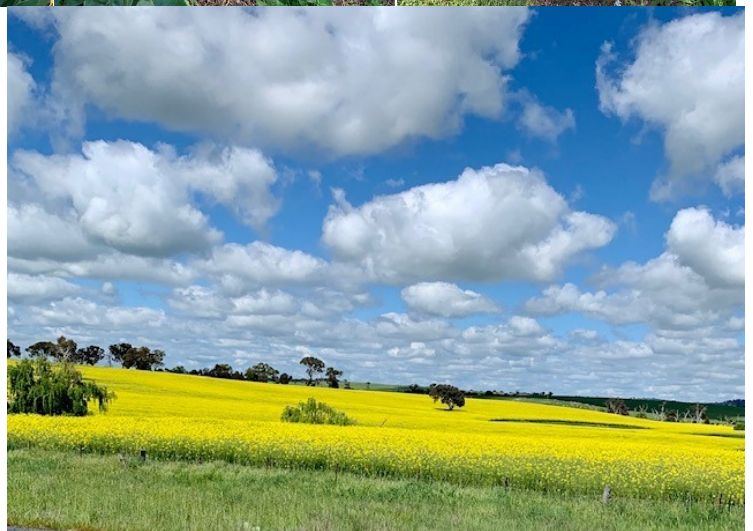
I hope you enjoy the focus on Lilly Lee this week and we look forward to hearing Lily speak at next weeks meeting.

Welcome home Elaine and we may hear from Norths soon in relation to meeting back there soon.

David and I enjoyed 9 days travelling to Mudgee, Cowra, Canberra and the Southern Highlands but always nice to return home too.

Take care

Toni Field OAM



Gardens in Mudgee.
The countryside.
Our cottage in Burradoo.

Focus on Lily Lee

1. Tell us about your childhood.

Before ten I lived in a remote county in China. I still have vivid memories of my native place and the occupation by the Japanese. Went to Hong Kong and studied there before moving to what is now Malaysia. Moving around make me not holding on to one place and adapt to new environment easily.

2. What studies have you completed?

I completed Chinese style high school in Hong Kong and Malaysia, went on to university in Singapore and majored in Chinese language and literature, after which I went to the US for graduate library school. I did a PhD at Sydney university after migrating to Australia.

3. What did you do in your work life?

I worked at the university library and taught at the Chinese Department at Sydney Uni. In addition to teaching I researched and published on Chinese women's history. Dedicating most of my working life to the compilation of a four volume Biographical Dictionary of Chinese Women from 1600BC to the 20th century, I also wrote books (including *Women of the Long March*) and articles about Chinese women. The Dictionary was published in English first and now in Chinese (still working on two volumes).

4. What is your favourite way to relax?

I love traveling and going to the farm. I also keep a few plants on my balcony. Watching TV thrillers and reading in the same category.

5. Why did you join Rotary?

I joined Rotary when helping Jiji to raise funds for her charities. We feel since Rotary helped us send funds to Qinghai, we should reciprocate by being part of it. We find Rotary a good channel through which to realise our wish to help others.

6. How do you see your place in Rotary?

I am retiring from most active work and will continue to support the work of others in the Club.

Lily

Lily Xiao Hong Lee
Honorary Associate
University of Sydney



Carlingford Community Online Art Show

<https://soundcloud.com/user-410080704/carlingford-community-online-art-show-23-oct-2020?fbclid=IwAR2sCNjg6lUyG3PanETNYGmgcJ9AROq6S-5dKK9tL9AEJx8cfdkMS9FZI0U>

A great way for artists to showcase their talents, for art lovers to browse the gallery and purchase unique art works for their enjoyment or as gifts. We meet Trudy Stevenson from Carlingford Rotary Club who explains how the idea came about, how to enter, the different categories, the prizes and the judging process. Chief judge is celebrated Australian artist and national living treasure, Ken Done OAM. An online art show, a creative way to celebrate art and to support two essential charities dealing with domestic violence. www.carlingfordcommunityartshow.com.au

As always grateful for your help in sharing this with your members. And please let me know if there are activities of your Club which would interest the wider general public to help spread the word about Rotary.

Cheers

IAN STUART

Presenter

Rotary Matters

On air Friday 3pm -4pm

www.rotarymatters.org

0416 138 860

Ian.Stuart@optusnet.com.au



Upcoming Events for your diary

Date	Speaker	Subject
29th October	Lilly Lee	The role of women during the Chinese Great March
12th November	TBA	
26th November	TBA	Includes Board Meeting
10th December	TBA	Includes Annual General Meeting

Unless advised all meetings will be held at the Xenos Restaurant Crows Nest.



Date	Birthdays	Date	Anniversaries
6th October	Samantha Lee		Nil

Date	Front Desk & Room Set Up Attendance Required from 12:00pm
	Lily will do all other dates and will ask a member if she is going to be absent.

Upcoming Events for your diary

Next Board Meeting ... 26th November



You can now download the COVIDSafe App which has been designed to quickly trace outbreaks of the virus.

Downloading the App is completely voluntary. Check the website for full details



Visitors & Apologies for 15th October 2020

Visitors:

Jeff McDougall	Guest Speaker
AG John Zhang	Rotary Club of Chatswood International
Chung Lee	Guest of Lily Lee
Alacoque Welsh	Rotary E-Club of Greater Sydney

Honorary Member:

Brendan Walsh

Zoom:

Tony d'Arbon

Leave of Absence:

Apologies:

Philip Brook
Lily Clarke
Jiji Lee
Samantha Lee
Peter Lulic
Elaine Newman

We are grateful to: Rotary Club of North Sydney Supporters



Kennards Self Storage - Artarmon

PHONE +61 2 9413 3377

ADDRESS 452-458 Pacific Hwy, ARTARMON NSW 2064

Entrance via: Norton Lane

EMAIL artarmon@kss.com.au WEB <http://www.kss.com.au>

**‘Keep It At Kennards,
The People Who Care’**