

Rotary



Club of Cedarburg-Grafton

PROUDLY PRESENTS...

THE MILWAUKEE SYMPHONY ORCHESTRA

Holiday Concert

MJO MILWAUKEE
SYMPHONY
ORCHESTRA

KEN-DAVID MASUR / MUSIC DIRECTOR

CEDARBURG PERFORMING ARTS CENTER

December 18, 2025
7:00 p.m.

COMING NEXT:

▲ 26th Annual
Rotary Music Festival Drum & Bugle
Corps Show, July 2, 2026
CHS Athletic Field

PROUD PURVEYOR OF

Holiday Magic

Port Washington State Bank
is proud to support the
Cedarburg-Grafton Rotary Club's
Milwaukee Symphony Orchestra concert.



*Belgium, Cedarburg, Fredonia, Grafton,
Port Washington, Saukville, Mequon & Thiensville*

www.pwsb.bank

Member
FDIC

We are proud to support the
Rotary Club of Cedarburg-Grafton
and salute its
on-going community service,
with special thanks for
Cedarburg's showpiece
Bandshell in the Park.



Ozaukee Bank's Gift to the Future

A fund supporting Cedarburg now and forever...

WARM HOLIDAY WISHES



Visit Us in
Cedarburg!

This holiday season, we're proud to support the arts and the Cedarburg community we call home.

Wishing you a joyful holiday season and a prosperous new year!



BankFirst

www.bankfirst.com

MEMBER FDIC | EQUAL HOUSING LENDER



CULTIVATING
CEDARBURG'S
ECONOMIC
SUCCESS BY
SUPPORTING A
VIBRANT BUSINESS
ENVIRONMENT
AND PROMOTING
OUR UNIQUE
COMMUNITY
CHARACTER.

*Seasons
Greetings*

FROM THE



www.Cedarburg.org

@cedarburgchamberwi

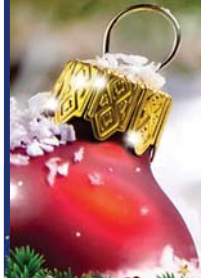
@experiencecedarburg





INSTALLATION • SERVICE • SALES

Merry Christmas



N52W5338 Portland Road • Cedarburg
262-256-0953
www.yourhometownheating.com

**ROTARY CLUB
OF CEDARBURG-GRAFTON**



Season's Greetings and Welcome,

On behalf of the Rotary Club of Cedarburg-Grafton, I am pleased to welcome you to our 2025 Milwaukee Symphony Orchestra Holiday Concert. We are incredibly honored to be entertained this evening by such a world-class group of musicians.



The Rotary Club of Cedarburg-Grafton was founded in 1965 and currently has 55 dedicated members comprised of community and business leaders who embody Rotary's motto of "Service Above Self."

Events like this one, and our Rotary Music Festival in July, allow us to provide up to \$42,000 in scholarships annually, as well as tens of thousands of dollars to local non-profits, community projects and international causes every year.

We appreciate your support, as well as that of the advertisers in this program book. I encourage you to look through the booklet and patronize the local businesses listed there. They are our friends and neighbors and are the reason our community is so special.

Thank you for joining us this evening for this wonderful concert with the Milwaukee Symphony Orchestra!

Sit back, relax and experience the joy ...

Dave Stern

Dave Stern, President
Rotary Club of Cedarburg-Grafton 2025-2026

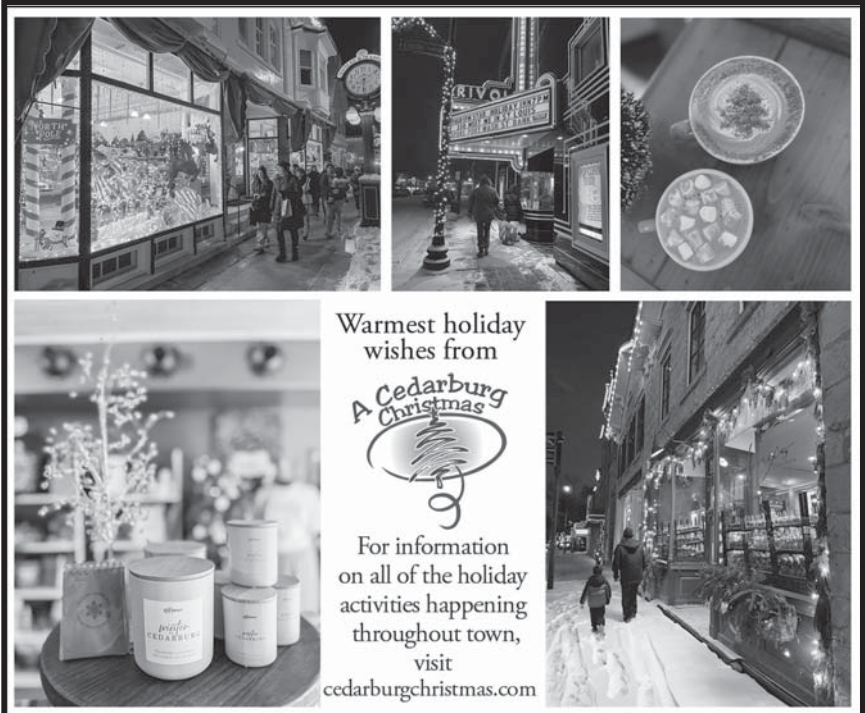
About the Milwaukee Symphony Orchestra

The Milwaukee Symphony Orchestra, led by Music Director Ken-David Masur, is among the finest orchestras in the nation and the largest cultural institution in Wisconsin. Since its inception in 1959, the MSO has found innovative ways to give music a home in the region, develop music appreciation and talent among area youth, and raise the national reputation of Milwaukee.




The MSO's 72 full-time professional musicians perform over 125 classics, pops, family, education, and community concerts each season in venues throughout the state. A pioneer among American orchestras, the MSO has performed world and American premieres of works by John Adams, Philip Glass, Geoffrey Gordon, Marc Neikrug, Camille Pépin, Matthias Pintscher, Roberto Sierra, and Dobrinka Tabakova, as well as garnered national recognition as the first American orchestra to offer live recordings on iTunes.

The MSO's standard of excellence extends beyond the concert hall and into the community, reaching more than 30,000 children and their families through its Arts in Community Education (ACE) program, Youth and Teen concerts, and Family Series.



Warmest holiday wishes from

A Cedarburg Christmas



For information on all of the holiday activities happening throughout town, visit cedarburgchristmas.com

RYAN TANI, ASSOCIATE CONDUCTOR

Ryan Tani is in his third season as associate conductor of the Milwaukee Symphony Orchestra. In 2021, he completed his two-year tenure as the Orchestral Conducting Fellow for the Yale Philharmonia under Music Director Peter Oundjian, where he was the recipient of the Dean's Prize for artistic excellence in his graduating class. Committed to meaningful community music-making in the state of Montana, Tani has directed the Bozeman Chamber Orchestra, Bozeman Symphonic Choir, Second String Orchestra, and MSU Symphony Orchestras. He frequently serves as cover conductor for the St. Louis, Colorado, and Bozeman symphonies and recently served on the faculty at the Montana State University School of Music.



Tani recently concluded his tenure as music director of the Occasional Symphony in Baltimore. A fierce advocate of new music, Tani curated over 20 commissions from Baltimore-based composers during his four-year directorship of OS. As resident conductor of the New Music New Haven series, he has collaborated, under the guidance of Aaron Jay Kernis, with Yale University composition students and faculty.

Tani is also a graduate of the Peabody Institute, where he studied conducting with Marin Alsop and Markand Thakar, and of the University of Southern California, where he studied voice with Gary Glaze. In 2015, he was declared the winner of the ACDA Undergraduate Student Conducting Competition at their national conference in Salt Lake City, Utah. In addition to his studies at Yale and Peabody, Tani has also studied conducting with Larry Rachleff, Donald Schleicher, Gerard Schwarz, Grant Cooper, and José-Luis Novo. Tani currently resides in Milwaukee, Wisconsin, where he can be found in the park with his dog, playing board games with friends and family, in the library with a good book, or in the practice room with his violin.

About the Cedarburg High School Vocal Music Program

Tonight's pre-show entertainment was provided by members of the Cedarburg High School A Cappella Choir and Bella Voce. Cedarburg High School has four choral ensembles open to all levels of ability. Choral music students can be heard in state honor choirs, in festival choirs locally and abroad, at district and state solo and ensemble festivals and local community events like this evening's MSO Concert pre-show caroling. Acting as ambassadors for CHS and the arts, students experience the joy of quality music making from singing at local establishments such as the Cedar Creek Settlement to their flagship musical productions on the Cedarburg Performing Arts Center stage. All choirs are directed by Tony Mudra.



KEN-DAVID MASUR / MUSIC DIRECTOR

Ryan Tani, Conductor

PROGRAM

LEROY ANDERSON	<i>A Christmas Festival</i>
MYKOLA LEONTOVICH/ Hayman, Richard	<i>Carol of the Bells</i>
GIACOMO PUCCINI/ Christopher Palmer	<i>La bohème: A Fantasy for Orchestra</i>
IRVING BERLIN/ Hermann, Ralph	<i>White Christmas</i>
TRADITIONAL/ Lucas Richman	<i>Hanukkah Festival Overture</i>
TRADITIONAL/ Tyzik, Jeff	<i>Wexford Carol / Christmas Reel</i>
PIOTR ILYICH TCHAIKOVSKY arr. Jeff Tyzik	<i>Nutcracker Mini Jazz Suite Dance of the Sugar Plums Swing Dance a la Russe</i>

— 20 Minute Intermission —

FELIX BERNARD/
Hermann, Ralph

Winter Wonderland

ENGELBERT HUMPERDINCK

*Evening Prayer from Hansel
and Gretel*
Abendsegen

DAVID LOVRIEN

*Minor Alterations:
Christmas Through the
Looking Glass*

RICHARD RODGERS/
Bennett, Robert Russell

*The Sound of Music,
Selections for Orchestra*
The Sound of Music
My Favorite Things
Do, Re, Mi
Edelweiss
Maria
Climb Ev'ry Mountain

MEL TORMÉ/
Lowden, Bob

The Christmas Song

TRADITIONAL/
Matthew Jackfert

I Saw Three Ships

VARIOUS/
Finnegan, John

Christmas Singalong
(lyrics on next page)
Jingle Bells
Joy to the World
Hark! The Herald Angels Sing
Silent Night
Deck the Hall
O Come, All Ye Faithful



A Christmas Carol Sing-Along

by
JOHN FINNEGAN

JINGLE BELLS

(Refrain)

Jingle, bells! Jingle, bells!
Jingle all the way!
Oh! What fun it is to ride
In a one-horse open sleigh!
Jingle, bells! Jingle, bells!
Jingle all the way!
Oh! What fun it is to ride
In a one-horse open sleigh!

Dashing thro' the snow,
In a one-horse open sleigh;
O'er the fields we go,
Laughing all the way;
Bells on bobtail ring,
Making spirits bright;
What fun it is to ride and sing
A sleighing song tonight! Oh!

(Repeat refrain)

JOY TO THE WORLD

Joy to the world! The Lord is
come;
Let earth receive her King
Let ev'ry heart prepare Him
room,
And heav'n and nature sing,
And heav'n and nature sing,
And heav'n and heav'n and
nature sing.

HARK! THE HERALD ANGELS SING

Hark! The herald angels sing,
Glory to the newborn King!
Peace on earth and mercy mild,
God and sinners reconciled!
Joyful all ye nations rise,
Join the triumph of the skies;
With th'angelic host proclaim,
Christ is born in Bethlehem!
Hark! The herald angels sing
Glory to the newborn King.

SILENT NIGHT

Silent night, holy night
All is calm, all is bright
Round yon Virgin Mother
and Child
Holy Infant so tender and
mild,
Sleep in heavenly peace,
Sleep in heavenly peace.

DECK THE HALL

Deck the hall with boughs of
holly
Fa-la-la-la-la, la-la-la-la.
'Tis the season to be jolly,
Fa-la-la-la-la, la-la-la-la.
Don we now our gay apparel,
Fa-la-la-la-la, la-la-la-la.
Troll the ancient Yuletide carol,
Fa-la-la-la-la, la-la-la-la.

O COME, ALL YE FAITHFUL

O come, all ye faithful,
Joyful and triumphant
O come ye, O come ye to
Bethlehem;

(Refrain)

Come and behold Him,
Born the King of angels;

O come, let us adore Him,
O come, let us adore Him,
O come, let us adore Him,
Christ the Lord.



wilo®

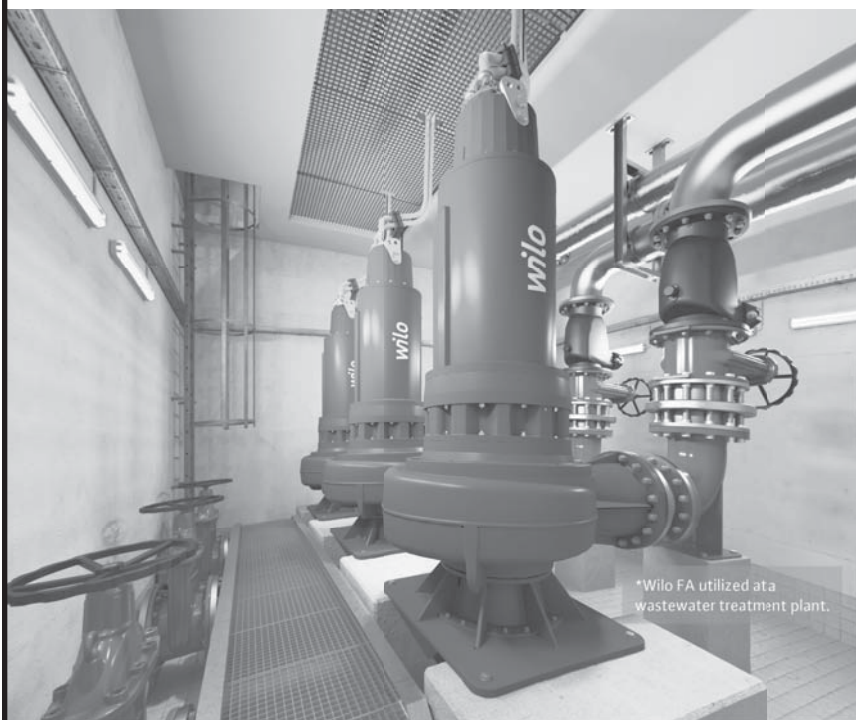
Pioneering for You

WEIL
Pump
A WIL BRAND

AMERICAN-MARSH PUMPS
A WIL BRAND

Scot Pump
A WIL BRAND

QuantumFlo
A WIL BRAND



*Wilo FA utilized at a wastewater treatment plant.

At Wilo, we provide solutions with pumps and systems for HVAC, water supply, drainage and sewage.



Milwaukee Symphony Orchestra

2025.26 Season

KEN-DAVID MASUR

Music Director
Polly and Bill Van Dyke
Music Director Chair

EDO DE WAART

Music Director Laureate

BYRON STRIPLING

Principal Pops Conductor
Stein Family Foundation Principal Pops
Conductor Chair

RYAN TANI

Associate Conductor

CHERYL FRAZES HILL

Chorus Director
Margaret Hawkins Chorus Director
Chair

TIMOTHY J. BENSON

Assistant Chorus Director

FIRST VIOLINS

Jinwoo Lee, *Concertmaster, Charles and Marie Caestecker*
Concertmaster Chair
Ilana Setapen, *First Associate*
Concertmaster, *Thora M. Vervoren First*
Associate Concertmaster Chair
Jeanyi Kim, *Associate Concertmaster*
Alexander Ayers
Autumn Chodorowski
Yuka Kadota
Elliot Lee
Dylana Leung
Kyung Ah Oh
Lijia Phong
Vinicius Sant'Ana**
Yuanhui Fiona Zheng

SECOND VIOLINS

Jennifer Startt, *Principal, Andrea and*
Woodrow Leung Principal Second
Violin Chair
Ji-Yeon Lee, *Assistant Principal*
(2nd chair)
Hyewon Kim, *Acting Assistant*
Principal (3rd chair)
Heejeon Ahn

Lisa Johnson Fuller
Clay Hancock
Paul Hauer
Sheena Lan**
Janis Sakai**
Yiran Yao

VIOLAS

Victor de Almeida, *Principal,*
Richard O. and Judith A. Wagner
Family Principal Viola Chair
Samantha Rodriguez, *Acting Assistant*
Principal (2nd chair), Friends of Janet
F. Ruggeri Assistant Principal Viola
Chair
Alejandro Duque, *Acting Assistant*
Principal (3rd chair)
Elizabeth Breslin
Georgi Dimitrov
Nathan Hackett
Michael Lieberman**
Erin H. Pipal

CELLOS

Susan Babini, *Principal, Dorothea C.*
Mayer Principal Cello Chair
Shinae Ra, Assistant Principal
(2nd chair)
Scott Tisdell, *Associate Principal*
Emeritus
Madeleine Kabat
Peter Szczepanek
Peter J. Thomas
Adrien Zitoun

BASSES

Principal, *Donald B. Abert Principal*
Bass Chair
Andrew Raciti, *Acting Principal*
Nash Tomey, Acting Assistant
Principal (2nd chair)
Brittany Conrad
Broner McCoy
Paris Myers

HARP

Julia Coronelli, *Principal, Walter*
Schroeder Principal Harp Chair

FLUTES

Sonora Slocum, *Principal, Margaret and Roy Butter Principal Flute Chair*
 Heather Zinninger, *Assistant Principal*
 Jennifer Bouton Schaub

PICCOLO

Jennifer Bouton Schaub

OBOES

Katherine Young Steele, *Principal, Milwaukee Symphony Orchestra League Principal Oboe Chair*
 Kevin Pearl, *Assistant Principa*
 Margaret Butler

ENGLISH HORN

Margaret Butler, *Phillip and Beatrice Blank English Horn Chair in memoriam to John Martin*

CLARINETS

Todd Levy, *Principal, Franklyn Esenberg Principal Clarinet Chair*
 Jay Shankar, *Assistant Principal, Donald and Ruth P. Taylor Assistant Principal Clarinet Chair*
 Besnik Abrashi

E-FLAT CLARINET

Jay Shankar

BASS CLARINET

Besnik Abrashi

BASSOONS

Catherine Van Handel, *Principal, Muriel C. and John D. Silbar Family Principal Bassoon Chair*
 Rudi Heinrich, *Assistant Principal*
 Matthew Melillo

CONTRABASSOON

Matthew Melillo

HORNS

Matthew Annin, *Principal, Krause Family Principal French Horn Chair*
 Krystof Pipal, *Associate Principal*
 Dietrich Hemann, *Andy Nunemaker French Horn Chair*
 Darcy Hamlin
 Dawson Hartman

TRUMPETS

Matthew Ernst, *Principal, Walter L. Robb Family Principal Trumpet Chair*
 David Cohen, *Associate Principal, Martin J. Krebs Associate Principal Trumpet Chair*
 Tim McCarthy, *Fred Fuller Trumpet Chair*

TROMBONES

Megumi Kanda, *Principal, Marjorie Tiefenthaler Principal Trombone Chair*
 Kirk Ferguson, *Assistant Principal*

BASS TROMBONE

John Thevenet, *Richard M. Kimball Bass Trombone Chair*

TUBA

Robyn Black, *Principal, John and Judith Simonitsch Tuba Chair*

TIMPANI

Dean Borghesani, *Principal*
 Chris Riggs, *Assistant Principal*

PERCUSSION

Robert Klieger, *Principal*
 Chris Riggs

PIANO

Melitta S. Pick *Endowed Piano Chair*

PERSONNEL

Antonio Padilla Denis, *Director of Orchestra Personnel*
 Paris Myers, *Hiring Coordinator*

LIBRARIANS

Paul Beck, *Principal Librarian, James E. Van Ess Principal Librarian Chair*
 Matthew Geise, *Assistant Librarian & Media Archivist*

PRODUCTION

Tristan Wallace, *Production Manager/Live Audio*
 Lisa Sottile, *Production Stage Manager*

*Leave of Absence 2025.26 Season

**Acting member of the Milwaukee Symphony Orchestra 2025.26 Season

Community Pride

Public power utilities like Cedarburg Light & Water are not-for-profit. Providing great services at the lowest possible cost while keeping the best interest of the community in mind is what it's all about. We're proud to have brought public power to this special community since 1901.



**People you know.
Service you trust.**

www.cedarburglightandwater.org

262-375-7650

Shared strength through  WPPI Energy

ROTARY CLUB OF CEDARBURG-GRAFTON



ABOUT ROTARY

On February 23, 1905, Paul Harris, the founder of Rotary born in Racine, Wisconsin, gathered with three other gentlemen for what would become known as the first Rotary club meeting. Harris' desire for camaraderie among business associates led to an international organization of service and fellowship.

Today, Rotary is a worldwide service organization with over 1.2 million members in over 200 countries. Two of the signature projects of Rotary International is the eradication of polio and providing clean water around the world.

The Rotary Club of Cedarburg-Grafton was founded in 1965 and is currently made up of 55 active business and community leaders. The following members are proud to embody the motto of Rotary: "Service above Self".

ALEXANDER COUTTS Carol	HAMMES John	LYTHJOHAN Dale
BABCOCK Brad	HANSEN Michael	NELSON Jeff
BEVERUNG Bud	HANSEN Patty	NEWMAN Gary
BODART Dan	HANSON John	OLSEN Layton
BOWE Casey	HENKE Jack	OLSEN Ryan
BUGNACKI Todd	HEPBURN Mal	OSTERMANN Gail
CAIN Steve	HERBRAND Mike	PAPE Jim
CAMERANESI Vince	HERBST Jerry	PETERSON Nial
CLARK Jeridon	HOOVER Julie	PETTED Cindy
COLLINS Brian	JANSSEN Dick	RADTKE Paul
CURRAN Chad	KNORR Jeffrey	SCHRADER Sue
DIEFFENBACH Dick	KOEHLER Chad	SKEBBA Terry
DOBSON Maggie	LANGHOLZ Mark	STERN Dave
EASTWOOD Linda	LAROSA Michael	THEILER Ken
EDQUIST Jerry	LEVY Ben	THOME Patricia
FITTING Dean	LEVY Donald	TSUI Michelle
GIBSON Blaine	LINDO Kristian	WRAALSTAD Melissa
GOLDBECK Brandon	LUFT Brent	
HAHM Minal	LUTZ Courtney	

ROTARY CLUB OF CEDARBURG-GRAFTON

1965 2025

Celebrating 60 Years of Service

Our Motto: Service Above Self

Community Service

This past year, the club sponsored two major events including the Rotary Music Festival in July and the MSO Holiday Concert tonight. These events not only raise thousands of dollars that are given back to the community, but provide top-notch entertainment for hundreds of participants.



The club also participated in several service projects including Walk4Water, a collaborative project between our members and students from Cedarburg and Grafton high schools to bring awareness to the global water crisis.

The 4-mile walk, held in May, replicated the distance that people in developing countries walk on average to gather water. The event raised \$13,000 to build a well in a community that desperately needs it in addition to providing sustainable agricultural training.

Scholarships

The club awarded \$42,000 in scholarships to seven deserving high school students valued at \$6,000 each and renewed six scholarships valued at \$1,000 each. The scholarships were presented to recipients at a reception in May.

Grants

Grants totaling more than \$37,000 were given this year to 15 organizations for projects supporting local and international causes. The grants supported local arts and social service programs as well as projects supporting clean water initiatives and crisis relief around the world.

Rotary Club of Cedarburg-Grafton

Providing Scholarships And Service To Our Community Since 1965



MERRY CHRISTMAS

and Happy New Year
from your best TEAM
in photography



LEVY & LEVY S.C.
ATTORNEYS AT LAW

"Music, the greatest good that mortals know."

... Joseph Addison ...

*A Wisconsin
Tradition
Since 1972*



SINCE **THE** 1972

CHOCOLATE FACTORY

SUB SANDWICHES & ICE CREAM

W62N577 WASHINGTON AVENUE

262-377-8877

THECHOCOLATEFACTORYWI.COM



HARRIGAN SOLUTIONS,
LLC.

Trustworthy Teams

www.harrigansolutions.com
262.292.0770

*Proud supporter of
Cedarburg Grafton Rotary*



Positively BRILLIANT

COMING IN 2026



JAN
10

JOHN MCGIVERN

A Man for All Seasons: Four Seasons, Four Stories

John's back with a collection of stories that humorously examine not only the seasons of the year, but also the seasons of our lives.

\$53 | <https://www.johnmcgivern.com/>



FEB
28

THE STEPCREW

A dynamic dance production combining Irish, Tap, and Ottawa Valley percussive dance styles in a fully realized theatrical setting.

Underwritten by: O'Hare Wealth Management

\$59 | <http://stepcrew.com/>



MAR
13

MANDY BARNETT SINGS BURT BACHARACH

With her wide range of musical styles, Mandy turns her world-class vocals to the timeless sounds of beloved songwriter Burt Bacharach.

\$53 | <https://www.ama.bz/mandy-barnett>



APR
10

I AM, HE SAID

Celebrating the Music of Neil Diamond

The Killer Vees celebrate Neil Diamond's timeless catalog. This is not a tribute show; it's the celebration of an amazing musical icon!

\$69 | <https://www.rockhousepro.com/neildiamond>



MAY
1

MICHAEL CAVANAUGH

Music of Paul Simon, James Taylor & Billy Joel

The "New Voice of the American Rock and Roll Songbook," Michael was chosen by Billy Joel to play him in Broadway's *Movin' Out*.

Underwritten by: Landmark Feed Seed & Supply

\$69 | <https://michaelcavanaugh.com/>

TO ORDER TICKETS, VISIT US AT
WWW.CEDARBURGPAC.COM OR CALL 262-888-3341..

NEWMAN

CHEVROLET

SERVING OZAUKEE COUNTY FOR OVER 45 YEARS

SALES
SERVICE
BODY SHOP
PARTS



EXPERIENCE. TRUST. COMMUNITY.

www.NewmanChevrolet.com

262-377-3020

*Happy Holidays to
you and yours from:*



Proud sponsor of the Cedarburg-Grafton Rotary Foundation



AN UNCOMMON FOCUS ON YOU.



We don't just treat patients - we care for people.

It may sound simple, but it's the foundation of the Orthopaedic Hospital of Wisconsin's three critical success factors: Quality, Patient Satisfaction and Staff Satisfaction. We provide the highest quality care to each and every patient at our hospital and clinics. From the moment you arrive until your rehabilitation is complete, we want you to feel confident in your care because above all else, we have an uncommon focus on you.



www.ohow.com



@ohoworthopaedics



@ohoworthopaedics

475 W RIVER WOODS PKWY, GLENDALE, WI 53212 414-961-6800



Peter Wollner Post 288 Cedarburg WI

If you have served federal active duty in the United States Armed Forces since December 7, 1941, and have been honorably discharged or are still serving - you are eligible for membership in the American Legion.

JOIN US THE 3rd FRIDAY OF EVERY MONTH FOR A FISH FRY

Celebrate the next milestone of your life at the Peter Wollner American Legion Post. Our hall can accommodate up to 130 guests in a 1,228 sq. ft. area. **Contact us at (262) 377-9987.**

Special thank you to the Cedarburg-Grafton Rotary Club for their continued support of the American Legion.



Compliments of:

H. Ben Levy, President

Donald A. Levy, Secretary

THE SHOPS OF CEDAR CREEK SETTLEMENT



- UNIQUE BOUTIQUES
- RESTAURANTS
- CEDAR CREEK WINERY

*Bridge + Washington
in Historic Cedarburg*

*www.CedarCreekSettlement.com
Open Daily ~ 262-377-8020*

PHILIPP

Print Solutions for Packaging & P.O.P.

www.philipplitho.com



Visit Riveredge Nature Center!
10 miles of trails to explore, plus
year-round outdoor programs,
events, and adventure for all ages.

Receive 20% off membership
with coupon code **MSO**
valid now through
December 31st!



riveredgenaturecenter.org

Cedar Creek Winery



**Wine for
the Holidays**



**WISCONSIN
MADE**

Open Daily

CEDARCREEKWINERY.COM



Merry Christmas

*from Jerry, Brandon, Brian, Todd,
Jeff, Big Mike, Little Mike,
Mike Jr., Graig, Kathy, Patrick,
Josh, Michael, Thomas, Amy, Ben,
Austin, Theresa, Jeraed, Paul, Mike
B., Tom, Miles and Clayton*

Cedarburg 
Overhead Door Co.

262-377-3620

Garage Doors & Openers Sales & Service

275414058

Compliments of



“Music Makes the World Go Round”

“Serving the Industry over 44 Years”

WEEDEN & ASSOCIATES, LLC

A private outpatient behavioral health clinic gratefully serving the Cedarburg and surrounding communities since 2008.

OUR MISSION:

To use the talents and abilities that God has given us to walk alongside others (individuals, couples, families) struggling with real life issues to find their way through difficult times and establish hope and a plan through these tough times.



Dennis C. Weeden

MSSW/LCSW | Psychotherapist
deweeden@sbcglobal.net

Jacqueline D. Weeden

MSSW/LCSW | Psychotherapist
jdweeden@sbcglobal.net

W67 N222 Evergreen Blvd.
North Building, Suite III,
Cedarburg, WI 53012

(262) 375-9225
weedenassociates.com



Cedarburg School District is fortunate to have an incredible team of highly-qualified professionals and staff who are continuously working collaboratively to create an amazing educational environment for our students. Cedarburg students will continue to grow and succeed because of our dedicated team, who do truly amazing things every day.

Cedarburg School District celebrates:

- Exceptional 4K - 12 programming
- Highly dedicated staff committed to excellence
- Highest rating of *Significantly Exceeds Expectations* on the DPI Report Cards at all five schools; #2 District in Wisconsin
- State and National recognition of superior student achievement
- State-recognized Fine Arts programs and performances
- Accomplished athletic programs
- Outstanding community support



COMMUNITY



SUCCESS



DEVELOPMENT

Follow us:   @cedarburgschooldistrict



Collins & Company
REALTY

Cedarburg, Wisconsin

Email: brian@collins-realty.com
Website: www.collins-realty.com



Brian P. Collins
CRB, CRS, GRI

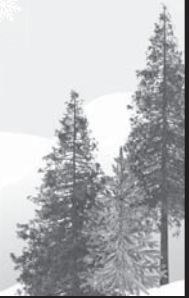
O: 262-375-4944
C: 414-881-5988
Broker-Owner

CELEBRATE THIS HOLIDAY SEASON IN GRAFTON

*A great place to shop,
dine & play anytime!*

Chamber gift checks
make great holiday gifts.

Call to place an order!
262-377-1650



EVERY STUDENT, EVERY DAY



**GRAFTON
SCHOOL
DISTRICT**



graftonschools.org



(262)376-5400

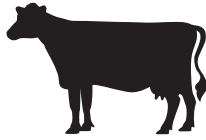


Grafton School District



@GraftonSchools





KEMPS®

QUALITY SINCE 1914

Good Comes Around



Community-driven.
Member-focused.
Here for life.

*Proud supporter of
Cedarburg-Grafton
Rotary Club*

 **kohler**
credit union
here for life.

Insured by NCUA. Membership eligibility required.



SUBARU.



BUICK

GMC

sommer's

Where customers send their friends

7211 West Mequon Rd.
262.242.0100

SOMMERSCARS.COM

SMALL TOWN BIG HISTORY



VISIT THE CEDARBURG HISTORY MUSEUM

*Experience Cedarburg and Wisconsin history through rotating, interactive displays. Located in the heart of the downtown historic district, our 2026 Premier Exhibits celebrate the **250th Birthday of America: History of the US Flag opens Feb. 1, First Nations Retrospective opens Mar. 1, and Cedarburg Immigration Story on Aug. 1.***

FREE ADMISSION

GIFT SHOP

HISTORY TALKS

Membership



N58 W6194 Columbia Road
Cedarburg, Wisconsin 53012
www.cedarburghm.org
Phone: 262-377-9620



Happy Holidays

from all of us at



DB STERLIN
CONSULTANTS INC



We are excited to share that while our name has changed, we remain the same trusted team you've known, now with expanded services and added expertise to serve you even better.

Wishing you a happy, healthy, and prosperous New Year!



DINE IN THE RUSTIC
SURROUNDINGS OF
THE OLD MILL



Treat yourself to a delicious lunch or
dinner of crepes, homemade soups,
sandwiches & salads
Be sure to try one of our
delectable dessert crepes!

Located in the Cedar Creek Settlement
in Historic Downtown Cedarburg

Hours

Monday, Wednesday-Friday 11am-3pm
Saturday & Sunday 11am-5pm
Closed Tuesdays
377-0900

CAMPFIRE
SESSIONS
with **TRAPPER SCHOEPP**
& friends

SATURDAY, JANUARY 24, 2026

Enjoy songs & stories
around the campfire.

SCAN FOR MORE INFO



FINALLY.
friday
ART & MUSIC

Experience
live music,
art, cocktails,
and more!

Jan. 9 Brett & the Dandys

Rockabilly/Doo-Wop from the '50s & '60s

Feb. 6 Comfort Shag

Third Coast Sound: originals & covers

DOORS OPEN AT 7PM, MUSIC BEGINS AT 8PM

CEDARBURG CULTURAL CENTER

W62N546 WASHINGTON AVE. CEDARBURG, WI 53012
262-375-3676 CEDARBURGCULTURALCENTER.ORG

**INSURANCE DESIGNED
WITH YOU AND
YOUR DREAMS IN MIND.**

**CALL (262) 235-8904 FOR
A NO-OBLIGATION FREE QUOTE.**



Michelle Tsui Agency, LLC

Michelle Tsui, Agent

1017 W Glen Oaks Ln Ste 209

Mequon, WI 53092

mtsui@amfam.com



American Family Mutual Insurance Company,
S.I. & its Operating Companies, 6000 American Parkway, Madison, WI 53783
©2015 006441 - Rev. 5/23 - 26929529-M0D



ANVIL PUB & GRILLE

Located in the historic Cedar Creek Settlement.

N70 W6340 Bridge Road, Cedarburg (262) 376-2163
anvilpubandgrille.com



HOUSEMAN & FEIND L.L.P.

ATTORNEYS AT LAW

www.housemanlaw.com

Shop the old-fashioned way at Cedarburg's 150 year old feed mill.



Landmark

Feed, Seed & Supply

"Not Your Ordinary Run of the Mill" Serving Cedarburg for over 150 Years!!

We proudly feature Wisconsin-Made Fromm Pet Foods

- Serving All of Your Pet Related Needs
- Everyday Low, Low Prices
- Ask about our Club Savings Card
- Over 75 Frequent Buyer Programs Available

- ☑ Great, Friendly and Knowledgeable Staff
- ☑ Huge Product Selection
- ☑ Fully Stocked and Ready to Sell
- ☑ Carrying All The Major Dry and Frozen Premium Pet Foods
- ☑ Largest Outdoor Bird Seed and Feeders in the Area

Featuring...

- Wild Bird Seed
- Chicken Feed
- Horse Feed
- Dog Food
- Cat Food
- Pet Supplies
- Bird Feeders
- Small Animal Feed
- Pet Friendly Salt
- Dog/Cat Treats
- Topsoil
- Mulch/granite
- Potting Soil
- Softener Salt
- Grass Seed
- Pine Shavings
- Straw Bales
- Cypress Mulch
- Firewood
- Deer Products



Hours
Mon-Fri
8:30AM to 6PM
Sat.
8:30AM to 6PM
Sun.
10AM to 3PM

NS8 W6181 Columbia Road, Cedarburg, WI 53012
Phone: 262-375-2909 Fax: 262-375-3126
www.LandmarkSupply.com

65 Years of CPA Excellence.

But We're More
Than Just Numbers.

HAWKINS | ASH

CPAs



WWW.HAWKINSASH.CPA

Tax | Audit | Accounting

11501 N Port Washington Rd., Suite 220
Mequon, WI 53092
262.243.9610

Sprecher

Beechwood
Sales & Service
Serving Ozaukee And
Washington Counties

New Berlin, WI 53151
262-717-2831



CAR MAID SERVICE, XLR8 Inc.

Dennis J. Erovick

FOREIGN / DOMESTIC AUTO REPAIR



Car Maid Service

7240 Sycamore Dr.

Cedarburg, WI 53012

262-377-2140

carmaidservice@yahoo.com

PRACTICING A HIGHER STANDARD OF CONSTRUCTION...

DOWN TO THE SMALLEST OF DETAILS.



Thierfelder BUILDERS, INC.

TO LEARN MORE ABOUT OUR VALUES AND
QUALITY PLEASE CONTACT US

BOB & SUE THIERFELDER CUSTOM HOMES & RENOVATIONS

WWW.THIERFELDERBUILDERS.COM 262.377.5369

DESIGN-BUILD



Ansay & ASSOCIATES
Insurance & Benefit Solutions

PROTECTING WHAT MATTERS MOST

Contact Ansay for all of your insurance needs

 **Ansay.com** |  **(888) 262-6729**



Ozaukee Pantry • Resale Boutique



Holiday giving that serves a greater purpose.

This season, share the spirit of community, kindness, and giving back. Every find at Family Sharing's Resale Boutique supports our neighbors in need.

FamilySharingOzaukee.org

1002 OVERLAND COURT, GRAFTON | TUES - SAT 10 AM - 4 PM



ARMBRUSTER

EST. *Jewelers* 1884

Downtown Cedarburg
262-377-0480

ArmbrusterJewelers.com



CEDARBURG AUTO REPAIR & SERVICE

Dennis Krings
Michael O'Hara

"Where price & service
is the difference"

N144 W6400 Pioneer Road
Cedarburg, WI 53012
Phone - (262) 377-8485

Monday thru Thursday
7:30am - 5:30pm

Friday 7:30am - 5:00pm

After hours (414) 469-2625

Saturday 8:00am - 1:00pm

CEDARBURGAUTO@ATT.NET

Towing - (262) 377-6410



Wishing you and your family a wonderful holiday season!

— Your Cedarburg Summit Team



SummitCreditUnion.com
800-236-5560 | 608-243-5000

Insured by NCUA

Thank You Rotary Music Festival Sponsors!

Every year in July, the Rotary Club of Cedarburg-Grafton hosts the Rotary Music Festival drum & bugle corps competition at the Cedarburg High School Athletic Field. We would like to thank the following businesses, organizations and individuals for supporting our 2025 event, which raised thousands of dollars for student scholarships and community causes.

_____ **LEAD SPONSOR** _____
 Ozaukee Bank's Gift to the Future

_____ **MAJOR SPONSORS** _____

Ansay & Associates
 Carlson Tool
 Eric von Schledorn
 Levy & Levy Attorneys at Law

Master Printwear
 Olsen's Piggly Wiggly
 Port Washington State Bank
 Wilo USA

_____ **CONTRIBUTING SPONSORS** _____

American Natural Premium
 Bank First
 Beechwood Sales & Service / Sprecher
 Bella Lei Salon Spa Boutique
 Bud & Kay Beverung
 Cedarburg Auto Repair & Service
 Cedarburg Chamber of Commerce
 Cedarburg Light & Water Utility
 Cedarburg Overhead Door
 Collins & Company Realty
 Hawkins Ash CPAs
 Hometown Heating
 Jerry & Patrice Herbst
 Richard & Barbara Janssen
 Kemps
 Jeff & Marian Knorr
 Landmark Feed, Seed & Supply

Mel's Charities
 Mid-America Seasonings
 Newman Chevrolet
 Gary & Sharon Newman
 Layton & Barbara Olsen
 Orthopaedic Hospital of Wisconsin
 Jim and Sandy Pape
 PJS Investment Management
 Philipp Lithographing Co.
 James and Jennifer Schowalter
 Sommer's Automotive
 The VanderBloemen Group
 Visual Image Photography
 Yamato Corp.
 Mark & Judy Ziebell

_____ **IN-KIND SPONSORS** _____

Cedarburg School District
 Grafton School District
 Henke & Associates

Northern Ozaukee H.S.
 Port Washington H.S.
 University School of Milwaukee

Join us July 2, 2026, for the 26th annual Rotary Music Festival.
Tickets on sale soon.

MERRY
Christmas
and
HAPPY
Holidays



TSR

SOLUTIONS



MANAGED IT SERVICES



CYBERSECURITY



PRIVATE DATA CENTER



IT CONSULTING



CLOUD SERVICES

 262.292.2000  www.TSRsolutions.com

HAPPY HOLIDAYS!

*The following Rotarians and their families
are pleased to support the
Milwaukee Symphony Orchestra
concert tonight!*

***Wishing you a season filled with
wonder, joy and beautiful music!***

Bud & Kay Beverung
Steve & Heather Cain
Carol Alexander Coutts
Linda Eastwood
Minal & Matt Hahm
John & Ronnie Hammes
Mike & Janelle Herbrand
Jerry & Patrice Herbst
Dick & Barbara Janssen
Jeffrey Knorr
Gary & Sharon Newman
Layton & Barbara Olsen
Gail Ostermann & Bob Uhren
Dr. Nial & Karen Peterson



**Paul Crandall & Associates, Inc.
Roofing & Sheet Metal Specialists**

**1645 N. Port Washington Road
Grafton, WI 53024**

(262) 375-3505 Fax: (262) 375-2887

www.pcaroofing.net

Commercial & Residential Roofing ~Siding ~Windows
Skylights ~Custom Copper & Sheet Metal ~Soffit & Fascia
Chimney Caps ~Downspouts ~Leaf Guard Systems

**Free Estimates!
www.pcaroofing.com**

At PJS, our services are comprehensive, client-centric and team-based. We will work with you to develop, implement and monitor a strategy that is tailored to your specific short and long-term goals in two areas of personal finance: Financial Planning and Investment Management.



Plan with Purpose.



PJS INVESTMENT
— MANAGEMENT —

(262) 377-0484

**W62N570 Washington Avenue, Cedarburg
contact@pjschmidt.com**

Morgan Stanley

Bravo

Morgan Stanley is proud to support
The Rotary MSO Holiday Concert, featuring the
Milwaukee Symphony Orchestra.

Mequon Office

11501 N Port Washington Rd
Mequon, WI 53092
+1 262 241-1960

Ages 8 wks. - 6 years old, Including 5K

MORNINGSTAR M O N T E S S O R I

Helping Children to Help Themselves



***Montessori and Children are...
The Joy and Harmony of Life!***

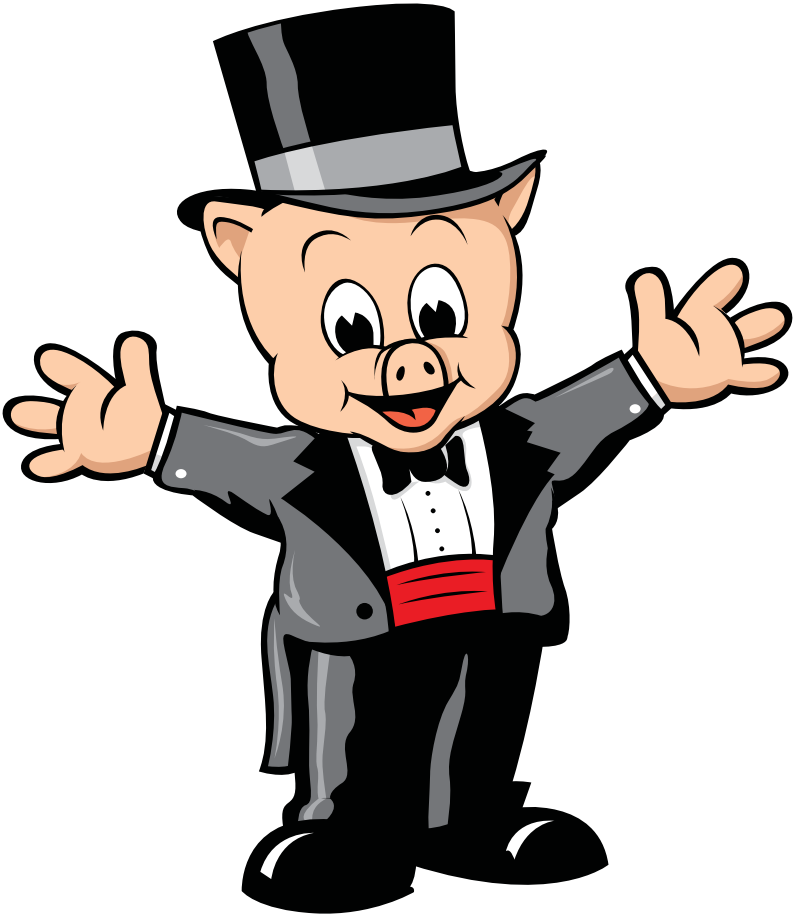
Year Round Preschool, 5K, and Childcare

Call for a Tour **262-573-3200**

Full or Half Day Programs

www.morningstarmontessori.org

**W63 N131 Washington Avenue
Cedarburg, WI 53012**



We Salute the Arts

Olsen's
piggly wiggly[®]

W61 N286 Washington Avenue, Cedarburg • 375-4474