

WA Alliance to End Homelessness



Homelessness

1st - People are not defined
by their situation

2nd - In Australia - we
tolerate homelessness



#EndHomelessnessWA

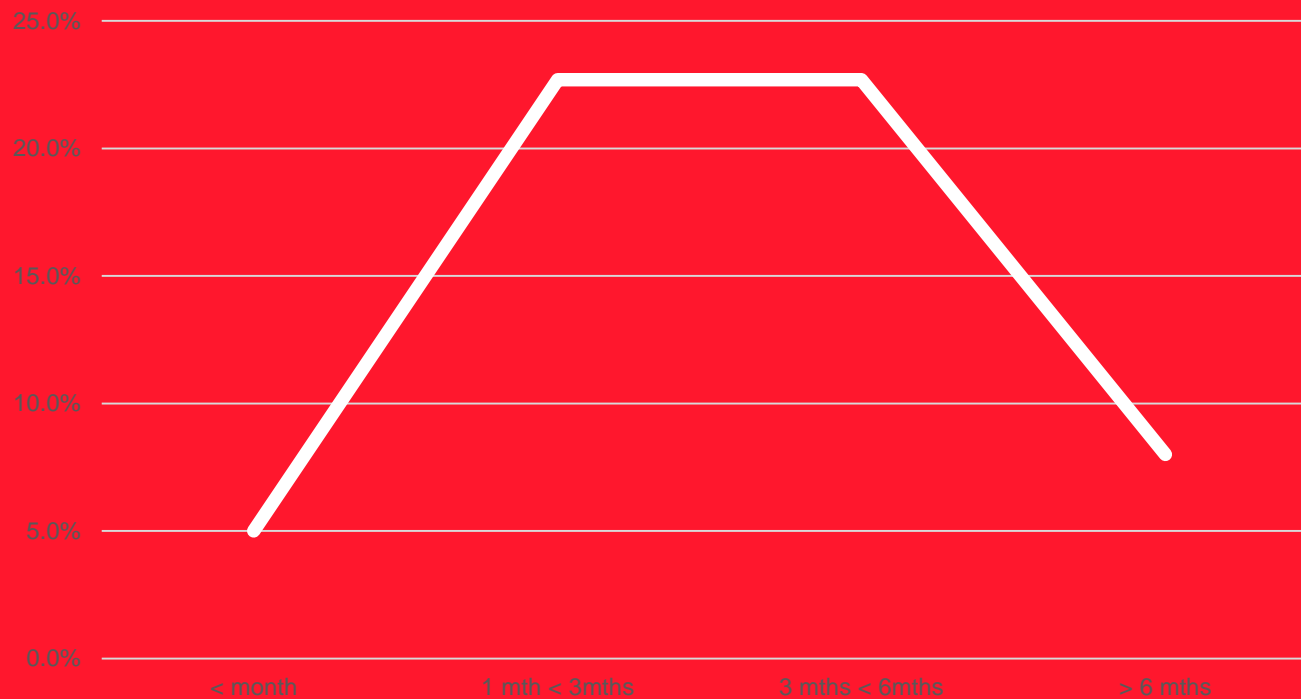
Homelessness in WA – ABS

WA Data 2016



#EndHomelessnessWA

Length of Homelessness

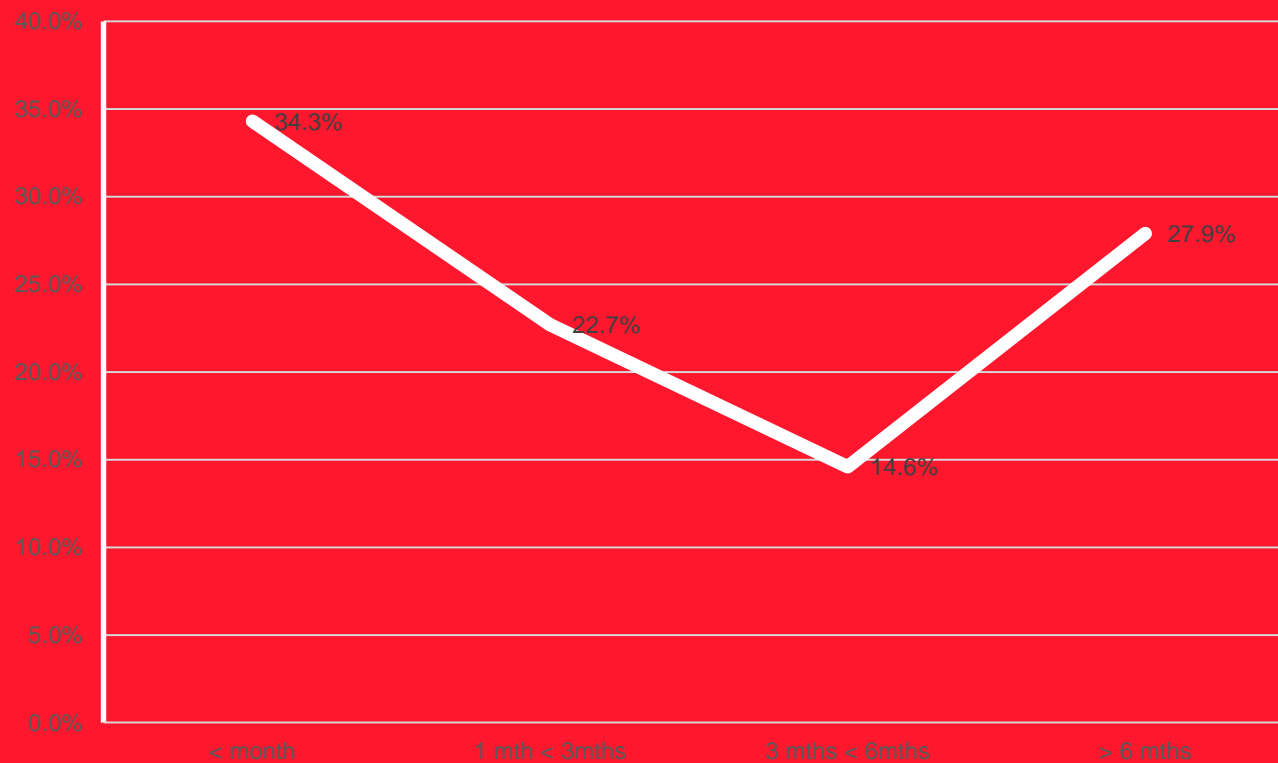


< month	5.0%
1 mth < 3mths	22.7%
3 mths < 6mths	22.7%
> 6 mths	8.0%



#EndHomelessnessWA

Length of Homelessness ABS 2014



< month	34.3%
1 mth < 3mths	22.7%
3 mths < 6mths	14.6%
> 6 mths	27.9%



#EndHomelessnessWA

General Social Survey 2014- ABS

In 2014 – 2.5million people aged 15+ years had experienced homelessness at some time in their lives.

Approx 1.4million of these people had at least one episode of homelessness in the past 10 years

Of the 1.4M

- 68% stayed with a relative
- 51% with a friend
- 12% slept rough
- 8% in a shelter/refuge

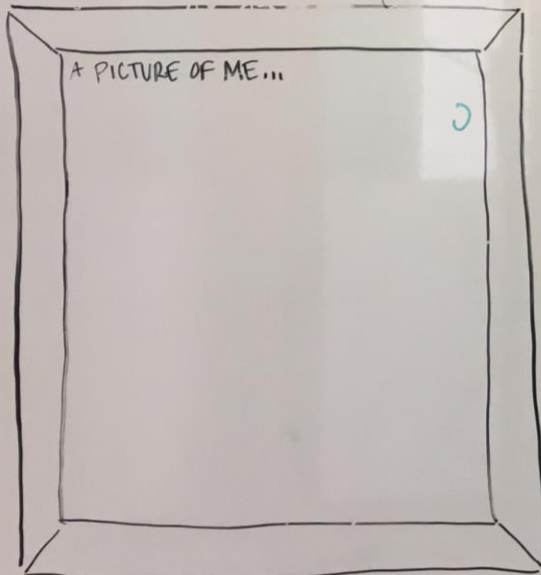


Homelessness journey

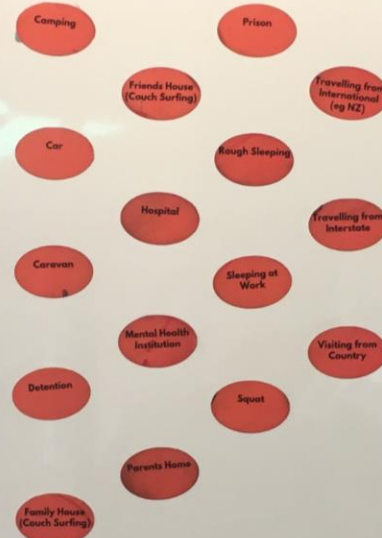
TELL US YOUR JOURNEY
#endhomelessnesswa

I AM:

I STARTED:



NO PLACE



CRISIS ACCOM



SUPPORT



Homelessness - journey

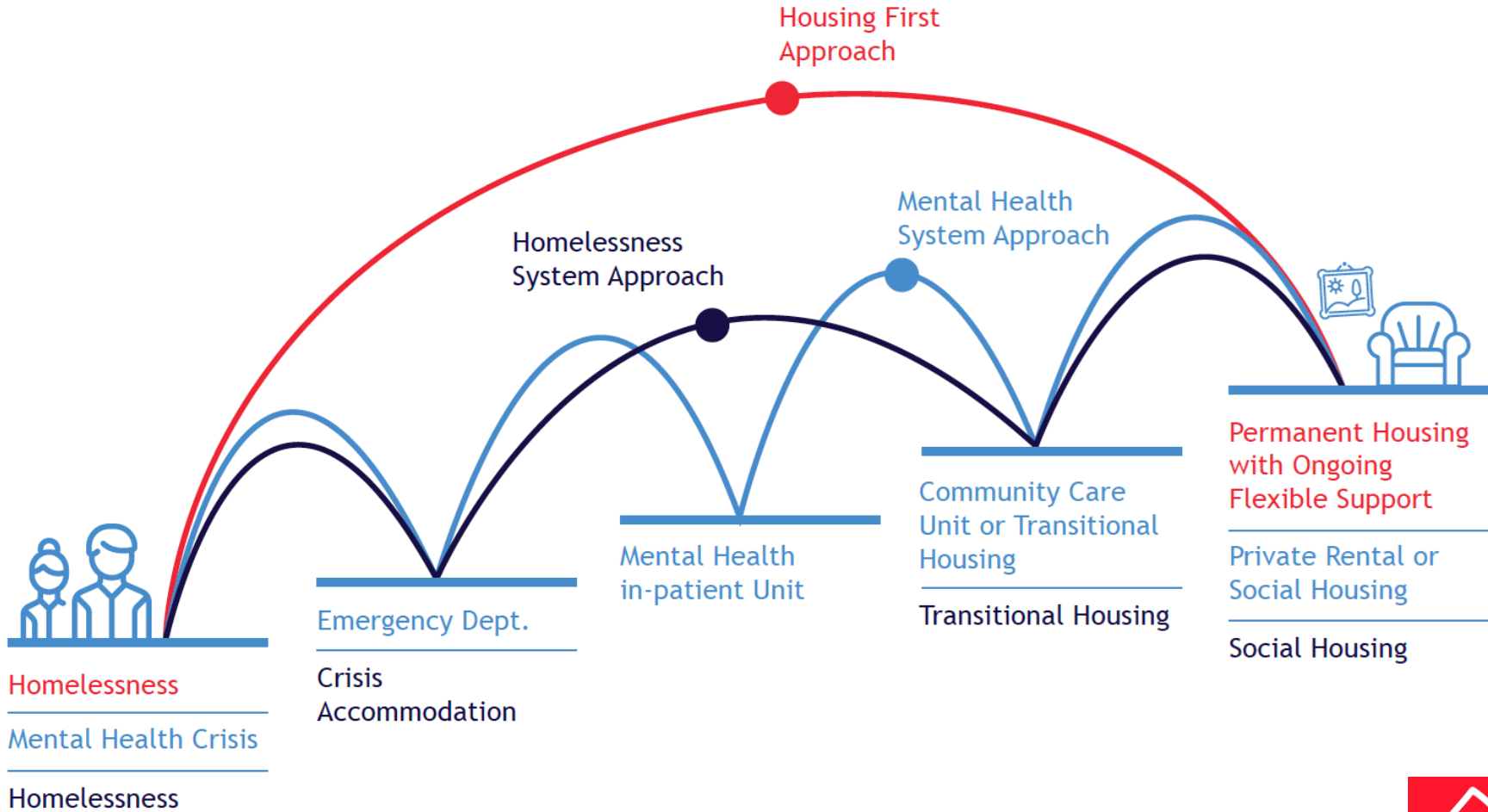


#EndHomelessnessWA

SNAKES AND



Housing First

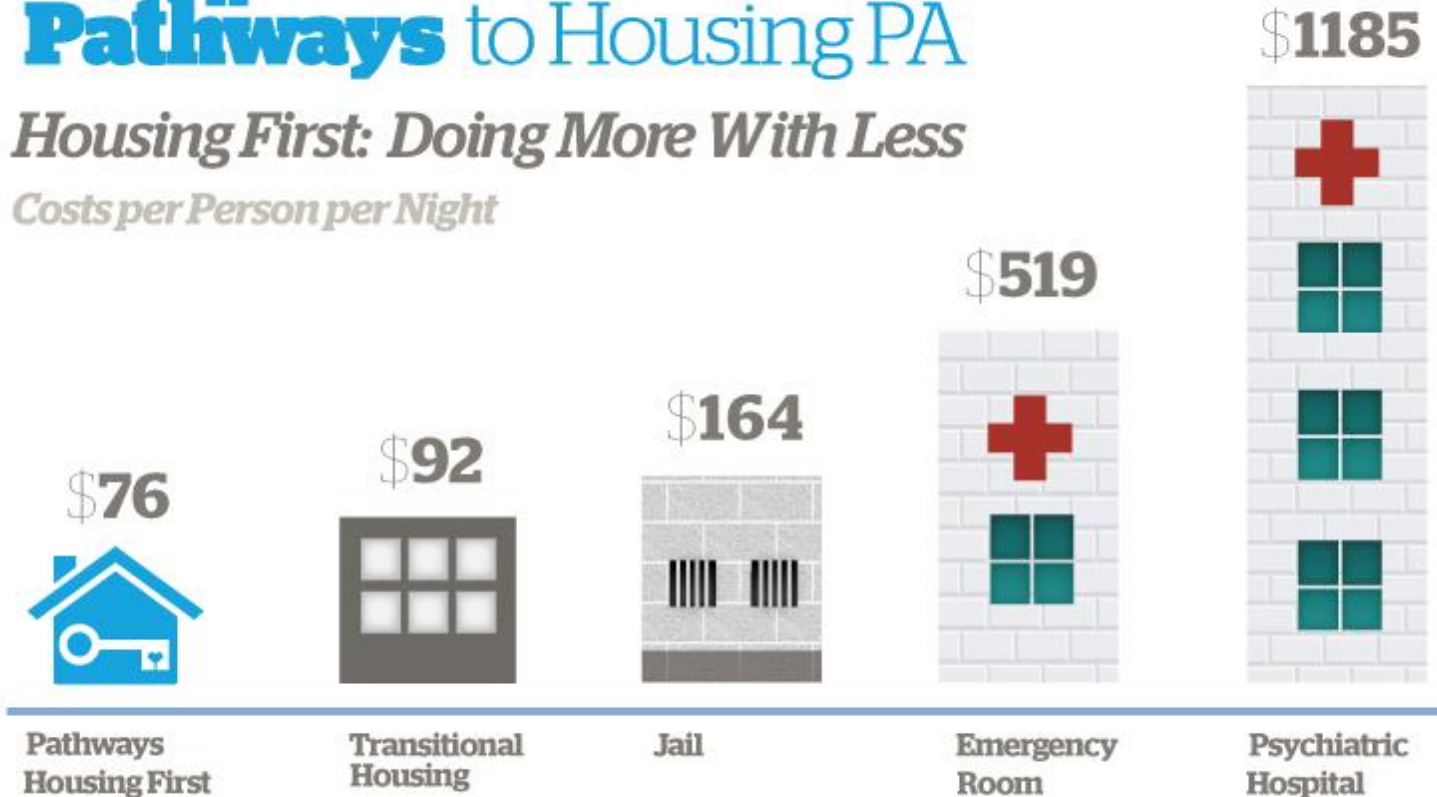


Housing First

Pathways to Housing PA

Housing First: Doing More With Less

Costs per Person per Night



Pathways to Housing PA, Housing First: Doing More with Less



#EndHomelessnessWA

50 Lives 50 Homes 3rd Report

50L50H Evaluation Snapshot



#EndHomelessnessWA

Housing choice does matter

Table 9: Six Monthly Retention Rate Comparing 50 Lives and Other Housing Types

Time Point	50 Lives Allocated	Housed Otherwise
Six Months	100%	86%
One Year	92%	74%
One and a Half Years	90%	71%
Two Years	87%	64%
Two and a Half Years	87%	60%
Three Years	87%	60%



Ending Homelessness is Possible



#EndHomelessnessWA

Our approach

We recognise that:

- despite the common misconception to the contrary, the scale of homelessness in Australia is both preventable and solvable
- It is possible to end homelessness, and we are going to start with those sleeping rough
- any incidents of homelessness that do occur should be rare, brief and non-recurring

Together we
can END
homelessness!



#EndHomelessnessWA



BRISBANE ALLIANCE
TO END HOMELESSNESS

A campaign to house
and support Perth's
most vulnerable
homeless people



WA ALLIANCE TO END HOMELESSNESS
Together we can end homelessness

#EndHomelessnessWA



advance to zero

local communities
ending homelessness



ADELAIDE
zero
PROJECT

Solving a wicked problem



The Problem

No single actor is fully accountable for ending homelessness in a community. Each local agency or program holds its own small piece of the solution, but no one has their eye on how the pieces fit together.

Funders evaluate success on the performance of individual program, not on whether a community collectively reduces homelessness. But single programs don't get us to zero — whole communities do.

A once-a-year count of a problem that changes nightly. Annual street counts are a snapshot; your community needs a video. Getting to zero takes line of sight into how people move through your system over time.

Housing supply paralysis. Expanded housing resources are crucial, but many cities have dramatically expanded housing supply without making a dent in homelessness. The reason? They never fixed the housing system.

Advance to Zero Solution

An integrated, command center team. Key agencies, the housing authority, local government, and CHO's, work together every week toward a shared definition of zero.

Community-level measurement. Built for Zero communities measure success by the total number of people experiencing homelessness, not by program outcomes. Data enables communities to rapidly test new ideas and understand if those efforts are working.

Comprehensive, real-time, by-name data. Built for Zero communities know everyone experiencing homelessness by name, in real time. The result is more tailored solutions for individuals and a clearer picture of the system as a whole.

Strategic, data-driven housing investments. Built for Zero communities use real-time data to secure the housing resources they need and target them for the greatest possible reductions in homelessness.

The Australian Zero Homelessness Methodology



Principles

- A Focus on Ending Homelessness
- System Change
- Person Centred

Seven Proven Interrelated Tools/Elements:

1. Assertive Outreach
2. Common Assessment & Triaging
3. Real-time by-name lists
4. Local Collective Action
5. Coordinated Systems
6. Continuous Improvement
7. Data informed Advocacy



OUR MISSION

The Brisbane Zero Campaign seeks to end rough sleeping in Brisbane in three years.

OUR VISION

The Brisbane Zero Campaign believes that no one should have to sleep on the streets, parks, motels or cars – and that everyone in Brisbane has a right to a safe, affordable home.

<https://www.brisbanezero.org.au/>



WA Alliance to End Homelessness

Ending homelessness in Western Australia by 2028

Achieving the Vision



#EndHomelessnessWA



The Western Australian Strategy to End Homelessness

Together we can make a difference
A whole of society response

A 10-YEAR PLAN TO END HOMELESSNESS
IN WESTERN AUSTRALIA

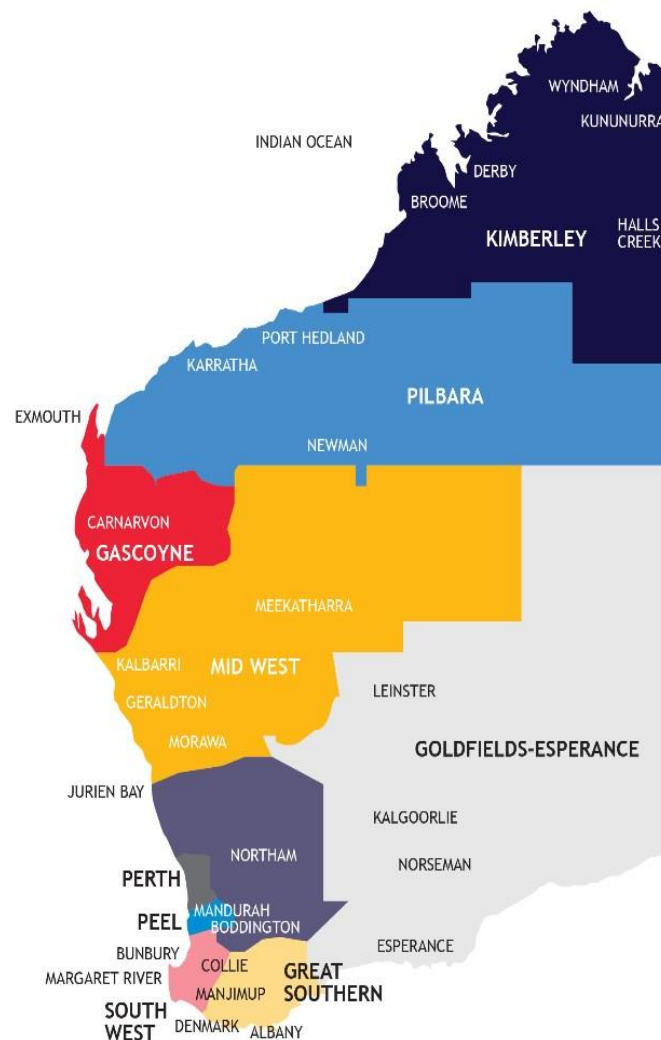
2018-2028

Western Australian Alliance to End Homelessness (WAAEH)

www.endhomelessnesswa.com

#ENDHOMELESSNESSWA

@EndHomelessnessWA @Homelessness_WA @endhomelessness_wa



#EndHomelessnessWA

Our Five Core Strategies

1	Housing	Ensure adequate and affordable housing. This means having a supply of housing that meets the needs of those who need it. It also means having multiple pathways into permanent housing and multiple housing options including housing with support services that are all effective.
2	Prevention	A focus on prevention and early intervention. Develop system, service and social responses that ensure people at risk of homelessness have the supports they need to prevent them entering homelessness. This will involve an improving recognition of the health value of a home.
3	A strong and coordinated response	A 24/7 'no wrong door' system that delivers responsive action across different community and health support systems that are well coordinated and act quickly.
4	Data, research and targets	Improve data, the evidence base on what works, systems knowledge, and the accountability of the health and social support system to achieve the goals of the Strategy. Building the evidence base around the health value of a home. Set clear targets and ensure delivery.
5	Building community capacity	Solutions are sourced from those who have experienced homelessness. All sectors that support those experiencing vulnerability and disadvantage deepen their capacity to end homelessness in WA. Developing a broad public movement, inclusive of all members of the community who have the desire to end homelessness brings more people and resources to ensure success.

High Impact Projects

Using the evidence



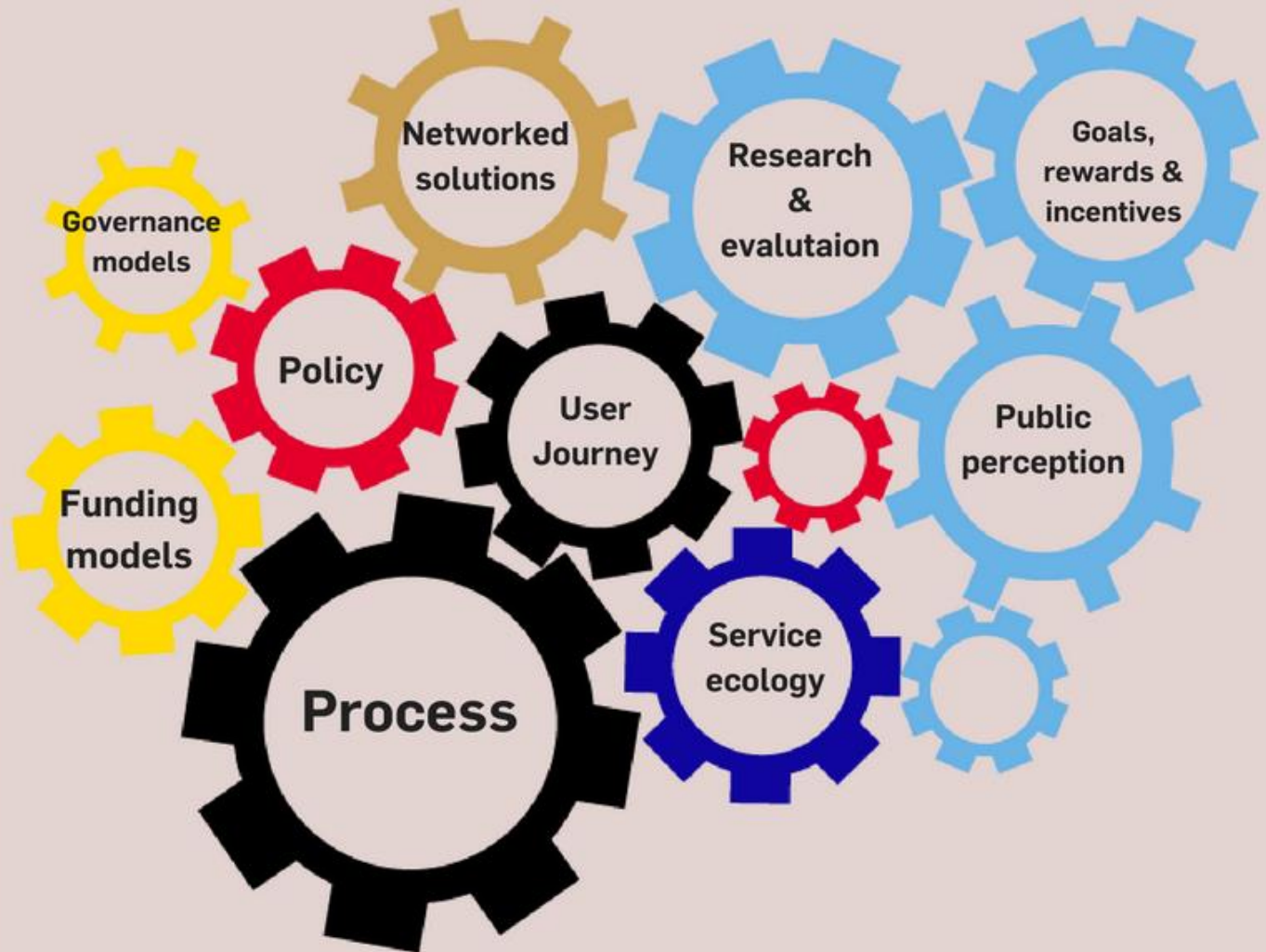
#EndHomelessnessWA

A Strong & Co-ordinated Response



#EndHomelessnessWA

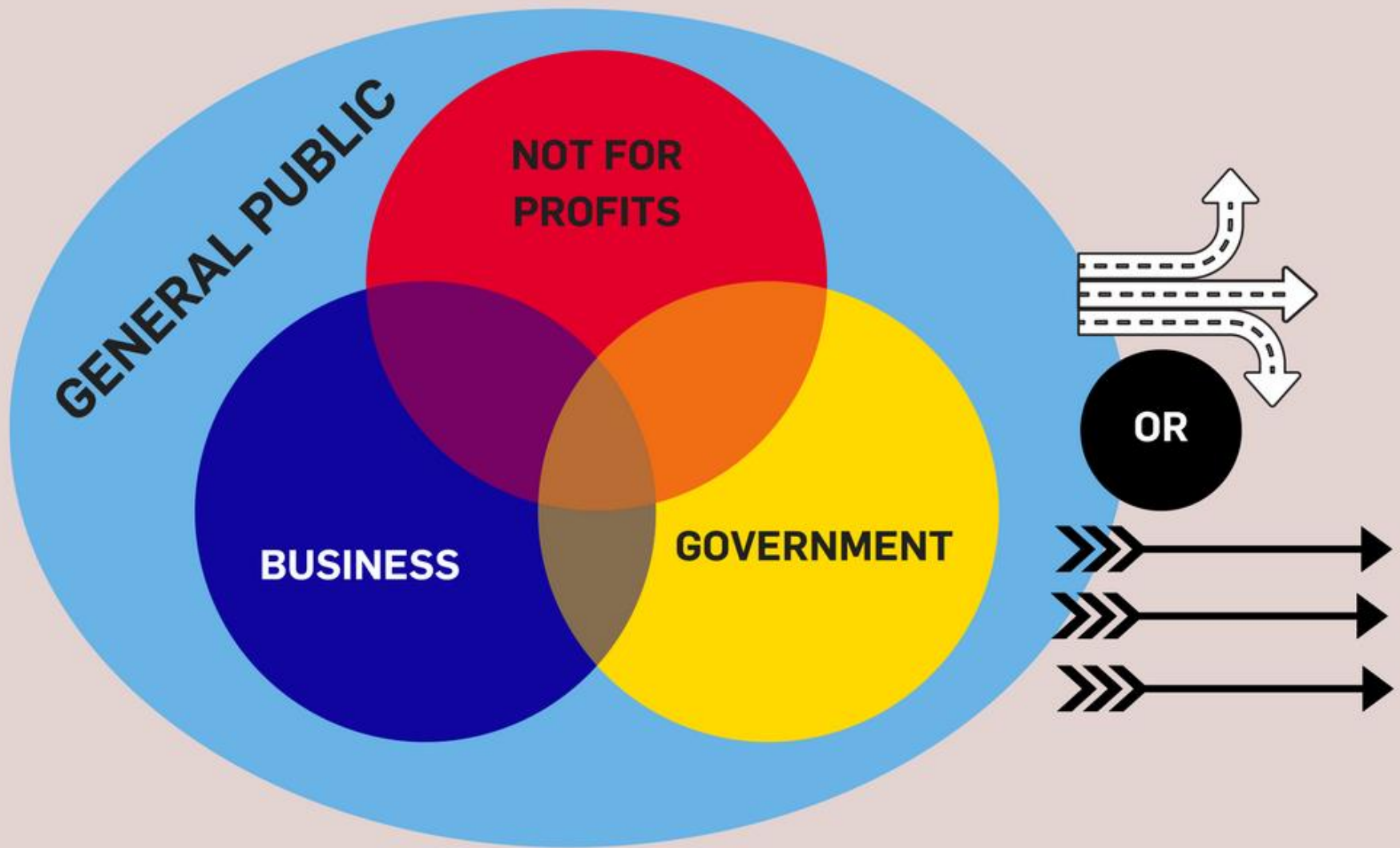
**Many
points in
the
system
that we
can drive
change
and
alignment**



Fostering an ecosystem of solutions



#EndHomelessnessWA



#EndHomelessnessWA