



illuminate
EDUCATION AUSTRALIA

BELIEVE IN TOMORROW TODAY



ILLUMINATE IMPACT LAB

REVIEW DOCUMENT | WBYM CAMP | 2025

www.illuminateeducation.com.au



Verified
Social
Enterprise

illuminate Education Australia supports the Sustainable Development Goals

At illuminate Education Australia, we design and deliver authentic and immersive education programs, to have every young Australian invited to meaningfully address the biggest problems that matter to them now. **To do so, we empower them to be confident, creative and capable.**

Our programs and workshops do more than just teach business and entrepreneurial skills, they provide an opportunity for young people to develop a core set of skills and capacities they can use immediately in the program through to the rest of their life.

WE HAVE INSPIRED

WITH

AND

+25,000

+300

+245

**STUDENTS AROUND
AUSTRALIA**

**SCHOOLS
IMPACTED**

**CHALLENGES
DELIVERED**

NUMBERS AS OF DECEMBER 20, 2024

illuminate Education Australia acknowledges Aboriginal and Torres Strait Island peoples as the traditional custodians of the land on which we gather, live, work and learn, and pay our respects to Elders past and present. For over 65,000 years, Aboriginal people have share stories and songs, taught each other and sustained impact on these lands, and there is still so much for us to learn from them.

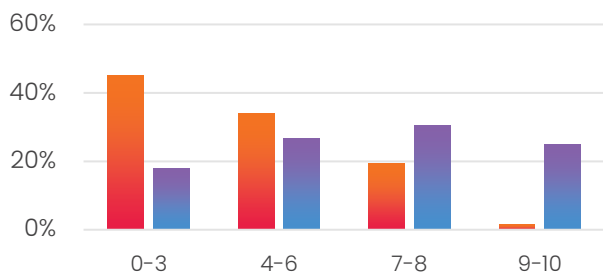
Firstly, thank you for your support of the illuminate Impact Lab to inspire young people of Brookton DHS, Dowerin DHS, Quairading DHS and Wyalkatchem DHS that all joined the Wheatbelt & Beyond Youth Mentoring Camp, to address the challenges that they see in the community through showing how they are confident, creative and capable. While all the program participants learned about what it takes to get a new idea up and running, importantly they stretched themselves in a range of skills that are required to lead and drive change.

This Review Document helps to capture the impact of the program through displaying the student evaluation results, a summary of the ideas and awards, reflections from the illuminate Education Australia team and acknowledgement of everyone who helped out with the week.

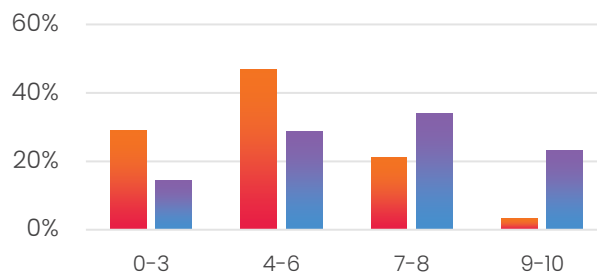
Highlights from Student Evaluation Data

Below showcases some of the results from the Student Evaluation Data, comparing the confidence of students at the start of the challenge to their confidence at the conclusion of the challenge experience.

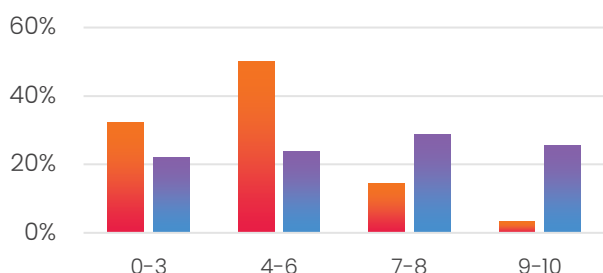
Confidence to Speak



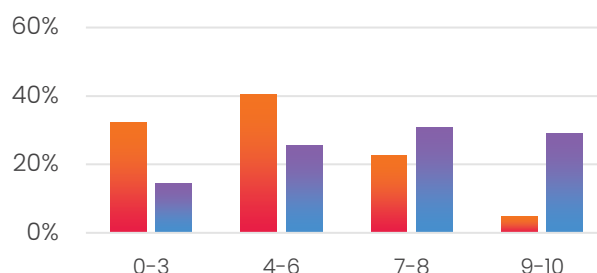
Confidence to Solve Problems



Confidence in Business



Confidence to Share Ideas



More graphs and explanation of data is contained further in this document.

The Solutions Developed

The core focus of the illuminate Impact Lab at the WBYM Camp in 2025 was to focus on challenges that the students face every day living in the Wheatbelt around accessing the support, connections and opportunities that they want to have provided – and then developing solutions on how they could see this happening. Knowing we ran this amongst the camp experience, it was incredible to see how they engaged with the tasks and delivered amazing ideas in just one and a half days! To give a sense of what the teams came up with, below is an overview of some of the ideas;

- **Help the Small Towns** recognised that better sport and social spaces will help keep new people in regional towns, so looked at developing plans to invest in these spaces and advocate for this strategy to keep people in the Wheatbelt.
- **Bright Buses** took on the challenge of being a young person in a regional place where you want to travel between towns, by establishing a bus service between the towns to help students access sport and social opportunities.
- **Wheatbelt Sports Association** raised that they are too old to play junior sports, and too young to play seniors, so developed a sporting competition where towns come together for Year 9 – 12 students to complete in basketball, netball and football.
- **COACO** tackled the lack of visits they get from further training providers which makes them feel less worthy than city students, and have proposed creating an online portal for careers where you can explore and meet people in these fields.
- **Equal Opportunities** challenged that the lack of opportunities provided to them mean their future options are effectively chosen for them, so want to help get more opportunities to the Wheatbelt through supporting organisations to visit them.

This is only a sample of the teams that completed the challenge, and does not cover the depth to which they went to over the three days (amongst everything else at camp), with students framing the problems, building the business and financial models, creating the promotional materials and thinking about how to pitch for impact. As you can see though, the students have delivered unique solutions that meet the needs of the community and could create great impact within the school if implemented and explored.

Award Winners of the illuminate Impact Lab

Below is a list of the teams that were announced as award winners as well as a list of the top performing teams.

Award Winners (as announced at the Awards Ceremony)

Best Written Submission Award	COACO (10)
Best Pitch Deck Presentation	Bright Buses (05) Equal Opportunities (14)
Best Marketing Package	Wheatbelt Sports Association (06)
The Collaboration Award	Fresh Food (01)
The Ideation Award	Towns Without Sports Equipment (12)
Best Prototype Award	Help The Small Towns (04)
Student Choice: Best Idea	Bright Buses (05) Country Racing Association (08)
Student Choice: Most Feasible Idea	Get Your Kids Out and About (09)
Student Choice: Best Team	Country Racing Association (08)

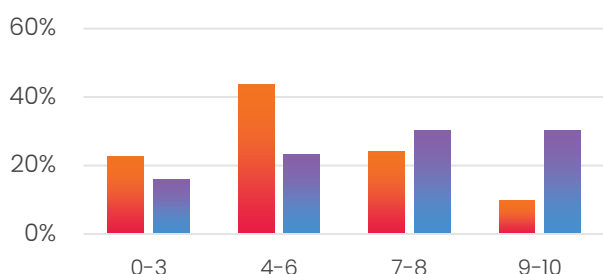
Best Solutions (based on Aggregate Scores)

6th Place	Towns Without Sports Equipment (06)	62.60
5th Place	Wheatbelt Sports Association (06)	67.79
4th Place	Equal Opportunities (14)	71.71
3rd Place	Help the Small Towns (04)	80.03
Runner Up	COACO (10)	80.44
Overall Best Solution	Bright Buses (05)	83.14

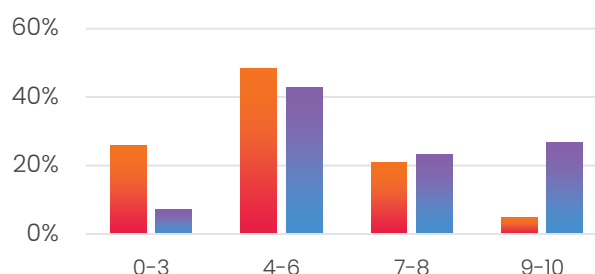
Analysis of Student Confidence Data

The following graphs (along with the four graphs at the start of this document) show the change in confidence across a range of areas that are focused upon in the challenge environment, based on the scores that students provided on their pre-evaluation data (before the challenge begun), shown in red, and the post-evaluation data (after all of the tasks had been completed), shown in blue/purple.

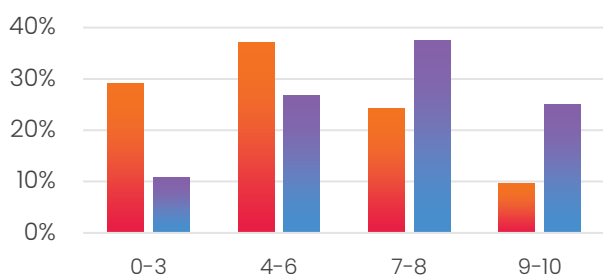
Confidence to Write



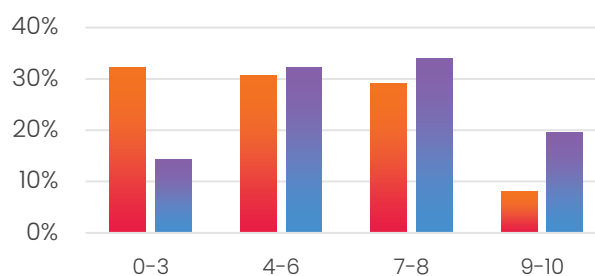
Confidence to Think Critically



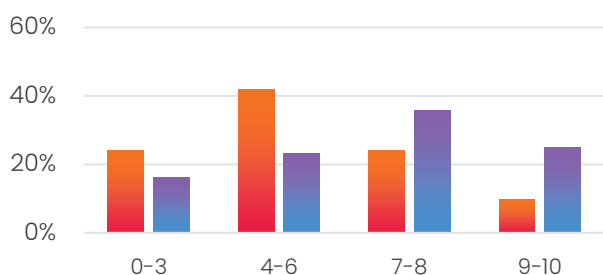
Confidence to Research



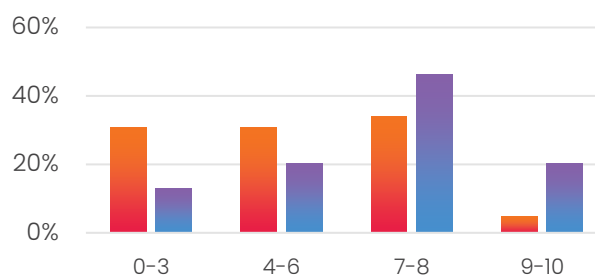
Confidence with Money (Financial Information)



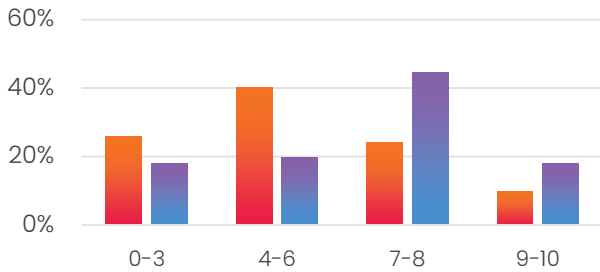
Confidence to Be Creative



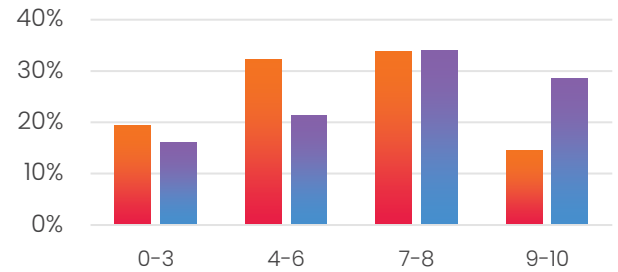
Confidence to Work With Others (Collaborate)



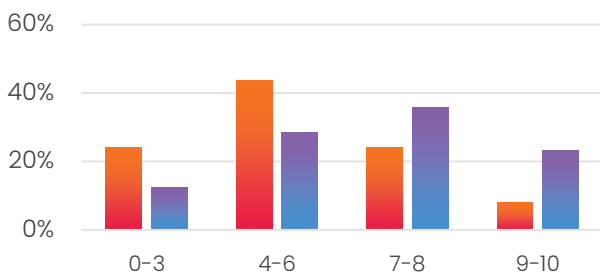
Confidence to Meet Deadlines



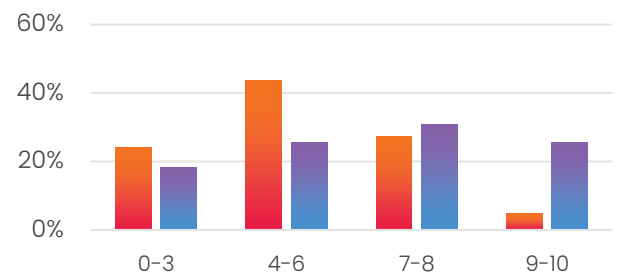
Confidence to Keep Going (Persevering)



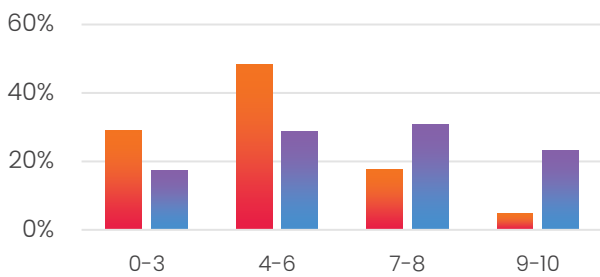
Confidence to Handle Stress



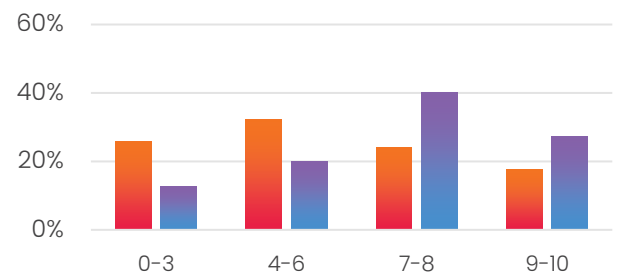
Confidence to Lead Change



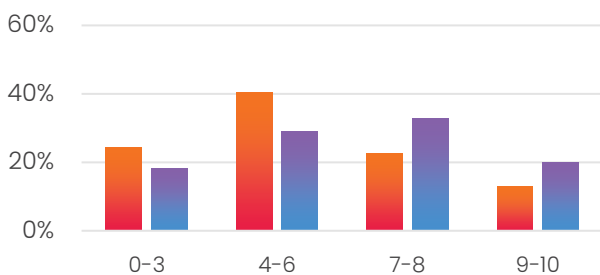
Confidence to Make a Difference



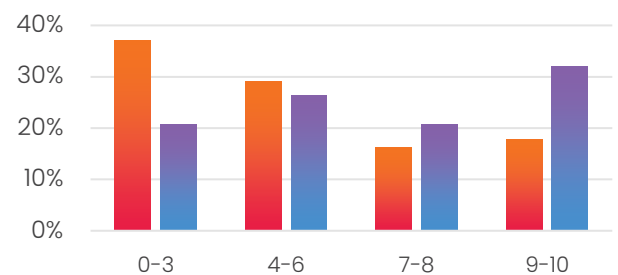
Confidence in Your Future



Interest in Starting Something New



Interest in Further Study



On top of these graphs, below is the full range of skills and capacities that we focus on in the illuminate Impact Lab, showing the growth across the program in our students.

Skills / Capacities	Pre-Program		Post-Program		Difference	
	0-6	7-10	0-6	7-10	0-6	7-10
Confidence to Write	66.13%	33.87%	39.29%	60.71%	-40.59%	+79.25%
Confidence to Speak	79.03%	20.97%	44.64%	55.36%	-43.51%	+164.01%
Confidence to Share Ideas	72.58%	27.42%	40.00%	60.00%	-44.89%	+118.82%
Confidence to Think Critically	74.19%	25.81%	50.00%	50.00%	-32.61%	+93.75%
Confidence to Research	66.13%	33.87%	37.50%	62.50%	-43.29%	+84.52%
Confidence to Use Technology	53.23%	46.77%	30.91%	69.09%	-41.93%	+47.71%
Confidence with Money (Financial Information)	62.90%	37.10%	46.43%	53.57%	-26.19%	+44.41%
Confidence to Be Creative	66.13%	33.87%	39.29%	60.71%	-40.59%	+79.25%
Confidence to Solve Problems	75.81%	24.19%	42.86%	57.14%	-43.47%	+136.19%
Confidence to Reflect	53.23%	46.77%	39.29%	60.71%	-26.19%	+29.80%
Confidence to Work With Others (Collaborate)	61.29%	38.71%	33.33%	66.67%	-45.61%	+72.22%
Confidence to Be Organised	62.90%	37.10%	46.43%	53.57%	-26.19%	+44.41%
Confidence to Meet Deadlines	66.13%	33.87%	37.50%	62.50%	-43.29%	+84.52%
Confidence to Keep Going (Persevering)	51.61%	48.39%	37.50%	62.50%	-27.34%	+29.17%
Confidence to Handle Stress	67.74%	32.26%	41.07%	58.93%	-39.37%	+82.68%
Confidence to Lead Change	67.74%	32.26%	43.64%	56.36%	-35.58%	+74.73%
Confidence to Make a Difference	77.42%	22.58%	46.15%	53.85%	-40.38%	+138.46%
Confidence in Business	82.26%	17.74%	49.09%	50.91%	-40.32%	+186.94%
Confidence in Your Future	58.06%	41.94%	32.73%	67.27%	-43.64%	+60.42%
Interest in Starting Something New	64.52%	35.48%	47.27%	52.73%	-26.73%	+48.60%
Interest in Further Study	66.13%	33.87%	47.17%	52.83%	-28.67%	+55.97%

The Impact of the illuminate Impact Lab

At illuminate Education Australia, one of our core passions is to be 'Results Driven' in the way we track the impact of our programs in evaluating the student growth and confidence over the week rather than their achievement against expected academic levels. We do this through collecting self-evaluation data before and after the challenge experience, which you can see the results over the page, but below is a summary:

- **An increase in core skills**, using the four groups we are focused on at illuminate Education Australia being Communication (Speaking, Writing and Presentation Skills), Understanding (Critical Thinking, Inquiry, Digital and Financial Literacy), Solving Problems (Creativity, Design Thinking, Problem Solving & Reflection) and Working Smart (Collaboration, Leadership, Organisation and Perseverance). These are skills that illuminate Education Australia recognises through research and engaging with leaders across business and the community that are critical to the world we live in right now.
- **An increase in problem solving and developing new ideas to local challenges**, which is a core element of the innovation process that underpins the challenge. For many, it helps provide a structure of how to raise issues in their local community, identify solutions for impact, develop the idea and present it for feedback and support to be launched.
- **A comfort with the problem solving environment**, showing the benefit of a large group of the students undertaking the challenge for the second time. It was clear that the students showed resilience, collaboration and other 'soft' skills throughout the week, and with a large number of students modelling these skills, it helped those who had not attempted the process before to be supported in this process.

Outside of these, we know that for many students they have individual realisations about skills, capacities, passions and pathways that they wish to explore, and we cannot wait to see the longer-term impact of the challenge experience on the students. With that stated, here are some of the individual reflections from students, based on what they wrote on their evaluation forms for illuminate Education Australia (noting that some of them would resonate with the wider camp experience):

What was your highlight of the program?

- Presenting our teams idea
- Working together
- Meeting new people
- Talking to new people, and learning new things
- Doing the presentation
- Being able to talk and present our ideas
- Making new friends
- Presenting our problems / ideas
- Planning the pitch and communicating with the team
- Spending time with friends from other towns
- Having fun
- It was really fun working with other people
- That we got to meet new people

What would you do differently if you could do the program again?

- Be more confident
- Work better
- Choose a partner and get put with another pair
- Not be scared to put my ideas in
- More enthusiasm
- Try to pay more attention
- Help a bit more
- Speak up a bit more
- I'd speak more on the first day
- Suggest more ideas
- Try more
- Try my best more
- Get more into our project
- Put in a bit more effort

How would you describe the program to someone else, based on your experience?

- I did a program to get better things in our community
- It was fun
- This is a life changing experience and you should do it.
- Pretty good
- Work in teams to solve a problem that you choose
- Very good, would do it all over again, very worth it
- Helpful
- Fun, valuable, friendly
- Intense, hard work, but fun once you understand your idea and what you're doing
- Interesting
- It's an entrepreneur program
- Interesting and helpful
- Business school.
- Lot's of work, but fun
- Kinda good
- Gives some useful skills
- It was a great time to meet other people
- It's really fun, and you get to learn about finance and different ideas
- It was fun, but hard working
- Well worth it
- Fun, Great!
- Very enjoyable, brings you closer to other students
- It's fun
- It is fun and you should go and try it.

Next Steps from Here

It's important to not just leave the illuminate Impact Lab experience here – we saw how your students handled the environment and suggest the following steps that you should consider.

Ongoing Reflection

Encourage your students to continue to reflect on the skills they explored during the illuminate Impact Lab, thinking about what they found easy, what they found difficult, and set goals around these skills to sustain them due to their importance in employment opportunities as well as leading change in our world right now.

Assess Work Internally

With students performing well across the challenge, we encourage you to access the submissions from our facilitators and distribute the work to other classroom teachers for internal assessment.

Sustain Engagement with the Community

It was great to bring in a range of individuals from the wider community including mentors and those part of the Careers Expo, and we know they enjoyed their involvement in the challenge. Please encourage teams that wish to continue (or now have another idea to progress) to connect with us and we'll put them in touch with these organisations where we can, to see your students continue their great work.

Secure Your Dates for 2026

Make sure you lock in early to have the illuminate Education Australia team return in 2026 to deliver the illuminate Impact Lab, building off the platform from this year to sustain activating your students to be confident, creative and capable. We can also expand on the challenge experience by running workshops for your teachers to extend the self-directed learning environment either alongside the challenge, or as a special event.

To discuss these next steps and any more, please reach out to the team from illuminate Education Australia that delivered the challenge, or email inspire@illuminateeducation.com.au for more information.

Acknowledgements and Conclusion

Thank you for your supporting in having the illuminate Impact Lab reach students through the Wheatbelt & Beyond Youth Mentoring Camp. It was incredible to have the support of so many partners to offer this opportunity to the students, not only providing the support and the connections they need, but also an opportunity to invest in the skills and self-belief of these amazing students. It is clear that the students got incredible benefit from the experience, but also there are some ideas and opportunities that need to be developed further from here.

We know that community challenges like this are richer because of the way the community supports and engages with the challenge, and we are thankful to everyone who shared their knowledge, experience, and encouragement with the students. Thank you to Alysia, Sarah, Dnaniel, Erin, Elise & Jenny for your support judging, and all of the mentors that helped alongside the teachers in helping teams through the innovation process.

It was amazing to see what the students could achieve in the challenge experience, addressing real and relevant challenges in their local community and developing new ideas with confidence and creativity that truly showcased the capacity that the amazing young people of the Wheatbelt have, and we have seen again and again across regional Australia. I thoroughly enjoyed the experience with the students and look forward to future opportunities to sustain the experience.

Adam Mostogl, illuminate Education Australia

LET'S KEEP IT GOING...

We have enjoyed working with your students – and would like to see what we can do to keep up the momentum because we are passionate about the impact we can make together.

Please Get In Touch

Please email us at inspire@illuminateeducation.com.au or call [+61 3 9087 1687](tel:+61390871687) and we'll keep the conversations going after the challenge experience.

Thanks again for your support and collaboration in delivering this experience, to inspire more young people to address our community's largest challenges through activating young Australian's to be confident, creative and capable.



Illuminate Education Australia supports the Sustainable Development Goals

