



## Janesville Morning Rotary 22<sup>nd</sup> Annual Pie Ride Saturday, June 18, 2022

We are excited to welcome you to beautiful Downtown Janesville for the 22<sup>nd</sup> Annual Pie Ride! With the location change, we are thrilled to bring more energy, entertainment, excitement, and fun to the Pie Ride.

As always, **your safety is our #1 goal**. Helmets are required on the course. [Mercyhealth](#) will be onsite for helmet fittings if needed. Volunteers will be on the course from 7 am – 2 pm, in case of any personal or equipment emergency. Be sure to hydrate appropriately to ensure a positive experience.

Our friends at [Michael's Cycles](#) will be at the start/finish line for minor repairs, and our friends from [Velocity Multi-Sport & Cycling](#) will be at our largest rest stop. A variety of snacks and water will be available at the rest stops.

**Rider Assistance:** If you need assistance the day of the event, please call 262-438-1198. This will reach multiple people who can assist you. Program this # in your phone now!

### **Schedule:**

*We offer the mass start at 8:00 am, however you are welcome to start any time between 7:00-10:00 am.*

- 6:30 am – Check-In Opens
- 7:00 am – Course Opens
- 8:00 am – Siren (Mass) Start
- 8:00 am – 1:00 pm – Janesville Farmer's Market
- 10:00 am – 2:00 pm – Johnny Nelson Band and Rock County Brewing
- 2:00 pm – Course Support Concludes

**Parking:** Below is a map of convenient parking areas to the Janesville Town Square. In addition, [Traxler Park](#) is a great location with ample parking and a short ride to the Town Square. The address of the Town Square is 69 South River Street, Janesville. Note, the road in front of the Town Square will be closed for the Farmer's Market.

**Check-In:** We will have two check-in locations this year – one for those who have pre-registered by Wednesday, June 15, and one for those who need to register on Saturday. You will pick up your shirt at the corresponding table so we can be sure that everyone who has pre-registered is guaranteed their shirt! If you pre-ordered any Pie Ride merchandise, it will also be available at check-in.

**Pies:** You'll pick up your pie at the finish line! Forks will be available if you want to enjoy yours while listening to music at the Town Square.

**Routes & Cue Sheets:** We try our best to ensure the routes are clearly marked, however it is helpful to [check out the routes](#) prior to the race. Printed cue sheets will be available at check-in, too.

**Raffle Tickets:** We have some awesome raffle prizes this year! Tickets are available for purchase around check-in and in the hospitality tent.

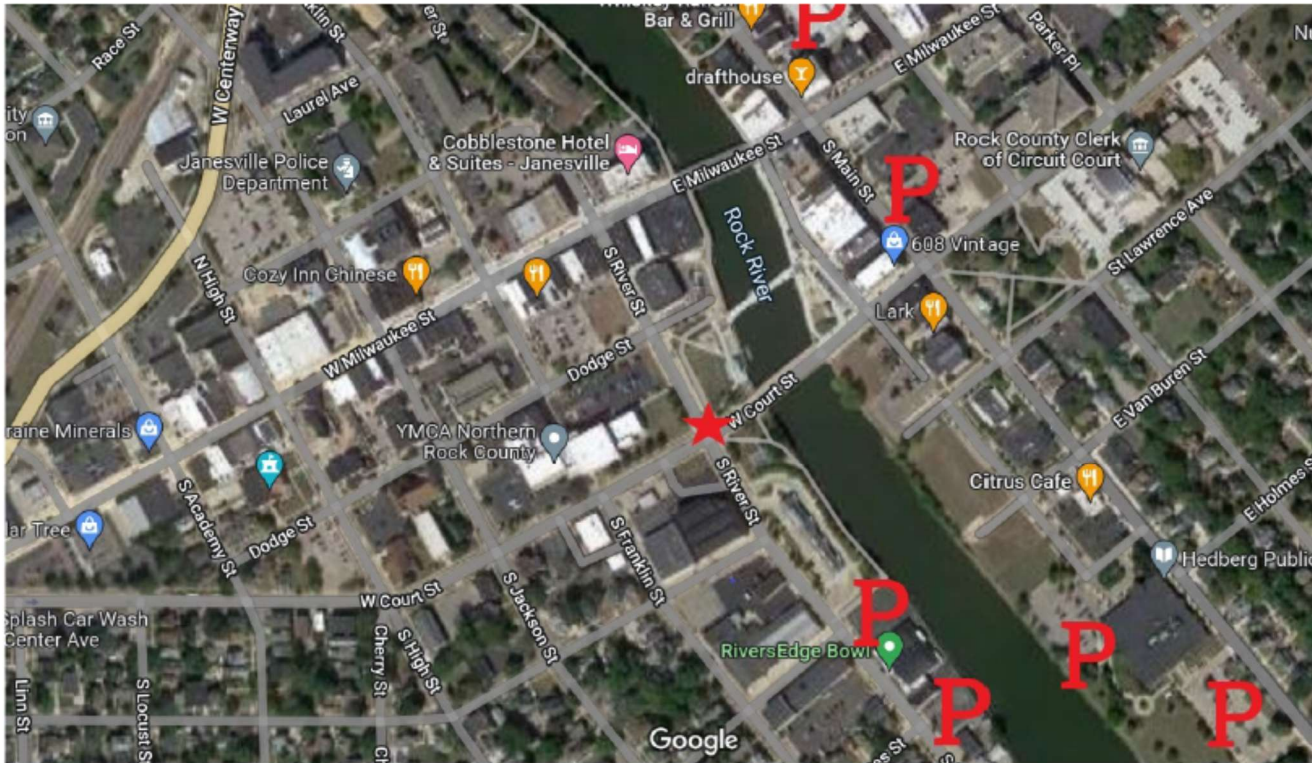
**Other Helpful Hints:**

- Cash may be helpful for food/beverage purchases.
- There are food trucks and other food options in case you want some other goodies to go with your pie!
- Bathrooms/porta potties are available at the start/finish line and at the rest stops.

**Your participation is appreciated!** We love seeing familiar faces from past years, as well as new riders. Thank you for sharing your stories with us, too! It is great to hear about Pie Ride traditions, new friends made, and all the fun that happens on the course. Because of your support, the Janesville Morning Rotary Club can donate ~\$30,000 to community non-profits through our grant program each year, as well as scholarships to local high school students. Some of the non-profits we have supported include YMCA, YWCA, Boys & Girls Club, HealthNet, GIFTS Men's Shelter, House of Mercy, ECHO, DECA, Rock County Cancer Coalition, Junior Achievement, Janesville Police Explorers Program, and so many more!

**Want to learn more?**

- [Janesville Farmer's Market](#)
- [Janesville Area Convention & Visitors Bureau](#)
- [Rock County Brewing](#)
- [Drafthouse](#) – official Pie Ride after party location – try the Rotary Pie Ride Strawberry Mule that benefits the Pie Ride!
- [Cobblestone Hotel in Downtown Janesville](#)



★ Hospitality area/ Start Finish  
P = Parking lot areas