

District 5190 “Making a Difference” Newsletter



Welcome to November and our celebration of The Rotary Foundation. From a small gift of just over \$25 over 100 years ago, the Foundation has grown to be one of the most prominent and successful in the charitable giving world.

We celebrate the good done in the world by our Foundation – from District Service Grants for club projects in your community, to Global Grants for major projects, to Global Scholarships for graduate studies, and Peace Fellowships. The Rotary Foundation funds wide-ranging projects at home and around the world.

There are so many great ways to give to the Foundation, from a small monthly gift from your checking account or credit card (Rotary Direct), to a major planned gift from your estate, there is a way that will fit your charitable giving budget. From a gift to our Polio Plus campaign that is matched 2 for 1 by the Gates Foundation, to endowing your special Rotary project, there are many projects that you can help fund.

Rotary will make sure that your gift is recognized, too. Paul Harris Fellowships are awarded each time your gift to the Annual Fund and Polio Plus Fund reaches \$1000 or multiple. And you become a Major Donor when total giving to these funds tops \$10,000. If your giving to the Annual Fund or Polio Plus is \$1000 or more every year, you are a Paul Harris Society member.

If you make a planned gift, you become a Benefactor, or a Bequest Society member for a larger planned gift.

This year, the District is rolling out the Triple Crown Donor recognition program, for those who are Major Donors, Paul Harris Society members, and Bequest Society members.

The Rotary Foundation brings us together as Rotarians around the world. Let’s celebrate the good it allows us to do!

Make the Impossible Possible – Make a Difference! By Helen Hankins

Rotarians believe that impossible things can be done. We only have to look at what Rotarians have accomplished in the fight to end polio. Closer to our hearts, perhaps, is the phenomenal work done by the Rotary Club of Reno, and many partner clubs, to establish the hospital and nursing school in Bwindi Uganda. And, what about the work done by the Bishop Club to bring urgent care and emergency medicine trainers to remote parts of Chiapas, Mexico? Then, there is the project the Truckee Club currently has underway to provide water filters to remote communities and ranchers in southern Baja.



Think about it – if you read between the lines in the paragraph above, you will note that large and small clubs can be successful at receiving and implementing a global grant. It takes a passion for the project, commitment, careful planning, and money.

A Global Grant can be for as little as \$35,000. A club, if they successfully partner with other clubs in the District, may only have to raise \$1,000 or \$2,000 – larger projects would likely require more money. Careful upfront work with a Rotary Club in the host country is critical – for needs assessment at first, and then for project initiation, implementation and monitoring. Another key to successful global grant development is a close working relationship with the Rotary International staff person assigned to a club's grant – to offer advice and review the document. The beauty of the Global Grant funding mechanism is that a club and partner clubs may raise as little as \$10,000 and end up with \$25,000 in matching funds from District 5190 and The Rotary Foundation. So what are you waiting for – talk to your club – and move out on an international project or help another club move out on their project. After all, if we only thought about our town and our club, where would we be with the hospital in Bwindi or with the eradication of polio?



“Be The Change!!”

That has been the theme this year for four remarkable people, the Rotary Club Presidents of Area 5. In the line up we have: Auburn Rotary Club - President Bob Santin, Auburn Gold Country Rotary - President Jo Barragan, Auburn Sunset Rotary - President MaryLynn Holliday and from Sierra Passport Rotary - President Garrett Konrad. Have they stuck to this theme you ask.....well I'm a proud Assistant Governor because yes they have.



On the recent visits with District Governor Doug, one common item was at every board meeting “We Are Working With All Area 5 Clubs”. From the international project of planting trees, to the Rotarians At Work Project, including World Polio Day and last but not least the community project with Acres Of Hope, these four clubs are have formed a bond to make each project successful and sustaining. Each President realized that if they work together more can get done, publicity is easier, we have more hands to make a difference and each has a quality to help the others out.

President Bob lead the Area 5 Rafting To Rid Polio, President Garrett formed the Planting Trees International Project, President Jo showed that asking for assistance from the other clubs with Gold Country's largest fundraiser, Oktoberfest, pays off in big ways and President MaryLynn has led the way in promoting Rotary in the Auburn, Ca community by getting Auburn Sunset Rotary involved in many local festivities.

Picture Above—Clockwise:
Stacy Graham, Jo Barragan,
Marylynn Holiday, Garrett
Konrad, and Bob Santin

With all they have on their plate it's hard to imagine how they could do more, but they do. Each club is looking at ways to improve membership retention, gain new members and promote all the wonderful things Rotary does in the community and internationally. At our [Area 5 Foundation Dinner, March 21, 2018](#), we will be hearing from our own [Auburn Rotary Past President Larry Rolufs](#) about his life [living with polio](#).



Auburn Rotary meets every Tuesday at noon, Auburn Elks Lodge - [195 Pine St., Auburn, CA](#)

Auburn Sunset Rotary meets every Tuesday evening at 5:30, El Agave Mexican Restaurant - [1285 Grass Valley Hwy, Auburn CA](#)

Auburn Gold Country Rotary meets every Thursday at noon, Awful Annie's - [13460 Lincoln Way, Auburn CA](#)

Sierra Passport Rotary meets Quarterly - see website

The Rotary Clubs of Auburn, CA have shown me passion, they are courageous in their efforts and they really do live a life of Service Above Self. Most of all, they have shown me that we are family, we are rich with respect for each other and they are **The Change**. I'm honored to serve along side each of these remarkable clubs for they give me so much more than I could have imagined.

**Rotary District 5190 Proud Area 5 Assistant Governor
Stacy L. Graham**



**SAVE THE DATE: Auburn Rotary Club's
2nd Annual Brewfest—May 5, 2018**



The Northern California Fire Recovery Fund (DAF) account within The Rotary Foundation has been established to streamline the flow of contributions from Rotarians looking to assist fire victims. The fund will be directed by the account-advisers listed below in consultation with the affected districts.

The account-advisers will work with local Rotary clubs and districts, as well as relief agencies, to address the needs of people in affected areas. Account-advisers may make grant recommendations for projects providing longer-term support and recovery (e.g. funding for Rotary Foundation Global Grant projects).

The Northern California Fire Recovery Fund Account-Advisors

Ronald Gin, District Governor for District 5150
Douglas McDonald, District Governor for District 5190
Bob Rogers, District Governor for District 5130
Sandra Sava, District Governor for District 5180
Gary Vilhauer, District Governor for District 5160

Frequently Asked Questions

- **How can I contribute?** Please see the detailed instructions on page 2. You may contribute via check, credit card, wire transfer, or stock transfer. All contributions must go directly to the DAF account and be in U.S. dollars. Only U.S. tax receipts will be issued. On all contributions, please be sure to reference **The Northern California Fire Recovery Fund, #615**. Misdirected contributions to The Rotary Foundation lock-box (or a Rotary Association foundation) will benefit the Annual Fund—SHARE.
- **What amount of my contribution will actually go to the relief effort?** Nearly 100% of contributions to The Northern California Fire Recovery Fund will be granted to IRS-approved charitable organizations helping to provide relief and recovery. There is a small fee of 1% which covers the administrative and investment costs. Additionally, on 1 July of each year, 1% of the fair market value of The Northern California Fire Recovery Fund is contributed to The Rotary Foundation's Annual Fund to support the programs of the Foundation.

Please note that The Northern California Fire Recovery Fund will make grants to other charitable organizations that may have other costs; however, efforts will be made to provide grants to organizations that directly support the needs of individuals and communities through the Rotary volunteer structure and other aid organizations. Additional fees may apply depending on the method of your contributions.

- **Will I receive recognition for my contribution?** Contributions to TRF DAF accounts are not eligible for Paul Harris or Major Donor recognition.
- **Where can I learn more about The Rotary Foundation Donor Advised Fund and how it works?** Please visit www.rotary.org/daf for more information.

For assistance, please send a message to plannedgiving@rotary.org or call (847) 866-3100.

You can contribute to the Donor Advised Fund by following the instructions below.

Check		Credit Card
Payable to:	The Rotary Foundation DAF	Contribute online at https://www.your-fundaccount.com/rotary/HowToContribute.asp .
In the Memo line:	The Northern California Fire Recovery Fund #615	
Mail to:	Rotary DAF c/o NRS 12 Gill Street, Suite 2600 Woburn, MA 01801	You will be asked to enter the account name and provide your address. (The Northern California Fire Recovery Fund) and the account number (615).
US dollars only		

Wire Instructions	
In addition to authorizing the wire, you must fax a copy of the wire authorization to (781) 658-2497 to complete the transfer of US dollars only.	
Please wire funds to:	Boston Private Bank & Trust Company
ABA Number:	011002343
For credit to:	The Rotary Foundation
Account number:	943423732
For Further Credit:	TRF DAF
Account Name:	The Northern California Fire Recovery Fund #615

Stock Instructions	
In addition to authorizing the trade, you must fax a copy of the trade instructions to (781) 658-2497 to complete the transfer.	
DTC Shares to:	SEI Private Trust Company
DTC Participant ID:	2039
Agent Bank ID:	94952
Credit to:	Rotary Clearing/Liquidation Account
Account Number:	755Z0007
Agent Internal STC Account Number:	11110-C

Please note:

- All accepted contributions are irrevocable assets of The Rotary Foundation.
- Contributions must be made in U.S. dollars and cannot be by money order or cashier's check.
- Donors will be issued a U.S. charitable tax receipt.
- The Rotary Foundation does not award recognition for contributions to this account; contributions do not earn Foundation Recognition points (toward Paul Harris Fellows) or count toward Paul Harris Society, Major Donor or Arch Klumpp society status or district giving goals.
- Non-U.S. contributions may be subject to additional information to meet U.S. guidelines for international fund transfers.
- Contributions sent to The Rotary Foundation lock-box will benefit the Annual Fund—SHARE.
- For more information about the Donor Advised Fund, please visit www.rotary.org/daf or contact the Planned Giving Team at planned.giving@rotary.org or (847) 866-3100.

Updated 18 October 2017; 4:00pm CT

Building Relationship and Understanding through Rotary Friendship Exchange

Why not plan the best vacation abroad ever? Just take the opportunity to make it a Rotary Friendship Exchange and don't be just a tourist. Being the guest of local Rotarians will give you great opportunities to live like them and see places where tourists don't go. Here are just a few suggestions, we have way more countries participating in this program, I have hundreds of pictures and descriptions but it would take the whole District newsletter and more. So have a look at the possibilities, consider the great advantage to have native friends to guide you. Let us know about your plans, we can help you to localize Rotary clubs in any country of your interest.

Irene Perbal - International Service Chair - irenerotary@jett.net - 209-286-1214

Ask about our pictures and descriptions of any country you like

Visit France, Paris, the Eiffel Tower, the Notre Dame, the Louvre, castles and cathedrals, the Champs Elysées and the sidewalk cafés. The Riviera, the famous Champagne wineries or the lavender fields in the South of France.



Or you might decide for Belgium, the center of Europe, Brussels Grand Place, the Floral Carpets, the best chocolate in the world! Or go to historic Bruges admire the Flemish Primitive painters van Eyck, Hieronymus Bosch. Great shopping centers, antique stores and an enormous variety of breweries and special beer.



Craftsmen arrange the carpet by hand, directly onto the square's cobblestones, without any soil. Grass and tree bark were also used to provide colour



Continued on next page.....

In Europe you find a great diversity of countries at a short distance, like The Netherlands (or Holland) is just around the corner.

Amsterdam, the canals, the Rijks Museums with the old Masters, or Van Gogh. The windmills and the tulip fields in the spring. Or go ice skating in the winter.



You might want to explore Africa , go on photo Safari, climb the Kilimanjaro and find the presence of Rotary in the least expected places.



SAVE THE DATE

November 4, 2017 Rotary Leadership Institute I

November 6, 2017 AG Conference Call

November 8-12, 2017 Rotary Zone Institute—Reno

November 17, 2017 District Governor 19-20 Apps Due

November 25, 2017 RYE Outbound Apps Due

December 1-2, 2017 RYE Inbounds Winter Weekend

December 2, 2017 District Governor 20-21 Interviews

ROTARY MONTH THEMES

July-New Rotary Year Starts

August-Membership and New Club Development Month

September-Basic Education and Literacy

October-Economic and Community Development

November-Rotary Foundation Month

December-Disease Prevention and Treatment

January-Vocational Service Month

February-Peace and Conflict Prevention/Resolution

March-Water and Sanitation

April-Maternal and Child Health

May-Youth Service Month

June-Rotary Fellowships Month



**ROTARY:
MAKING A
DIFFERENCE**

Club Membership Growth for September			YTD Giving Data		
	Offical Start Number	Current # Members	Percentage Growth	Annual Giving YTD	Restricted Giving YTD
Alturas	29	30	3.45%	\$1,161	\$237
Alturas Sunrise	23	23	0.00%	\$1,003	\$495
Amador Upcountry	23	22	-4.35%	\$1,317	\$132
Auburn	97	97	0.00%	\$3,750	\$4,495
Auburn Gold Country	31	29	-6.45%	\$1,530	\$1,600
Auburn Sunset	16	17	6.25%	\$0	\$0
Bishop	31	30	-3.23%	\$1,945	\$245
Bishop Sunrise	31	31	0.00%	\$1,120	\$420
Cameron Park	51	48	-5.88%	\$1,740	\$843
Carson City	68	70	2.94%	\$2,285	\$0
Carson City - Sunset	12	13	8.33%	\$300	\$0
Chester	17	18	5.88%	\$0	\$0
E-Club	22	22	0.00%	\$0	\$0
Elko	66	65	-1.52%	\$130	\$330
Elko Desert Sunrise	27	27	0.00%	\$1,575	\$2,521
Ely	30	29	-3.33%	\$0	\$110
Fallon	36	38	5.56%	\$405	\$0
Fernley	32	33	3.13%	\$685	\$86
Georgetown Divide	37	39	5.41%	\$0	\$0
Grass Valley	63	67	6.35%	\$1,255	\$354
Grass Valley South	33	33	0.00%	\$548	\$128
Greenville	12	12	0.00%	\$170	\$0
Incline Village	21	21	0.00%	\$0	\$0
Ione	31	32	3.23%	\$2,225	\$0
Jackson	52	49	-5.77%	\$2,680	\$0
Loyalton	17	17	0.00%	\$475	\$0
Mammoth Lakes Noon	37	32	-13.51%	\$775	\$0
Minden	30	31	3.33%	\$50	\$20
Nevada City	33	33	0.00%	\$210	\$0
Nevada City 49 Breakfast	87	87	0.00%	\$6,073	\$1,075
Penn Valley	33	33	0.00%	\$2,192	\$300
Placerville	28	29	3.57%	\$0	\$0
Plymouth-Foothills	47	47	0.00%	\$918	\$0
Pollock Pines-Camino	21	22	4.76%	\$160	\$0
Portola	21	21	0.00%	\$315	\$50
Quincy CA	45	46	2.22%	\$1,875	\$275
Reno	175	175	0.00%	\$4,104	\$125
Reno Centennial Sunset	38	36	-5.26%	\$405	\$4,825
Reno Central	76	80	5.26%	\$6,635	\$500
Reno Midtown	24	26	8.33%	\$25	\$1,025
Reno South	57	59	3.51%	\$1,942	\$565
Reno Sunrise	44	44	0.00%	\$2,424	\$120
Sierra Passport	28	34	21.40%	\$0	\$0
Smith Valley	32	30	-6.25%	\$570	\$0
South Lake Tahoe	23	23	0.00%	\$500	\$25
Sparks	103	104	0.97%	\$6,860	\$100
Sparks Centennial Sunrise	27	27	0.00%	\$3,260	\$200
Susanville	60	61	1.67%	\$355	\$100
Susanville Sunrise	30	31	3.33%	\$0	\$447
Tahoe City	32	33	3.13%	\$210	\$200
Tahoe-Douglas	54	53	-1.85%	\$5,348	\$20
Tahoe-Incline	60	59	-1.67%	\$1,860	\$2,800
Tonopah	18	19	5.56%	\$0	\$300
Truckee	89	91	2.25%	\$1,035	\$700
Truckee Sunrise	12	12	0.00%	\$0	\$0
Winnemucca	57	58	1.75%	\$610	\$100
Yerington	41	41	0.00%	\$1,367	\$0
TOTALS	2370	2389	0.80%	\$76,376	\$25,867

Submitted by District Secretary—Randy Van Tassel

Message from AG Helen Hankins

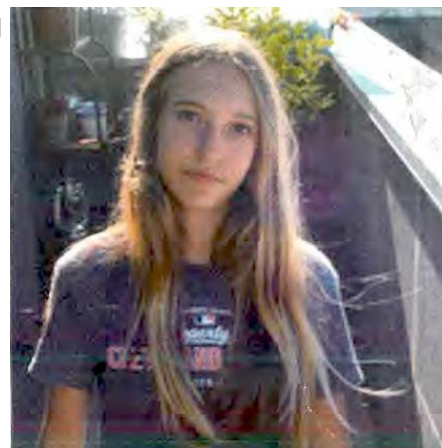
"My dream is for every 17-year old to become a Youth Exchange Student."

In 1993, I was a relatively new Rotarian in Fairbanks, Alaska. There was talk of an inbound Rotary Youth Exchange (RYE) student – the application was circulated among club members. I could not wait to get home to talk to my husband, Mike, to see if he would consider this idea. Thus began our long tenure as host parents for RYE students – in District 5010 and later District 5190.

Like many in our district, we have a passion for the RYE kids – there is something special about them. We have hosted twelve students over a number of years. This article, however, isn't about us, it is about "Why RYE?"

Any who have hosted an RYE student could write reams about the benefits of the experience – here is our perspective: Students are energized, enthusiastic, and interested in the world around them. They bring their own set of experiences to an exchange. Their questions and comments give rise to wonderful talks and discussions and increased understanding about many issues. Friendships develop with the students and their natural families that last a life time and lead to many cross-cultural connections. Sometimes, the students get homesick or develop other concerns and it is nice to try and help them work through things as they mature and expand their horizons. Our horizons, too, have been expanded – today when we hear about Brazil, or South Africa, or Indonesia, our ears and minds connect – because we have a connection with those countries. And our hearts are glad that we do. Bottom line – RYE is great because it makes the student and the host family's better people. I often think of that quote from the 2004-05 RI President Carl W. Stenhammar, "My dream is for every 17-year old to become a Youth Exchange Student. If we could achieve this, there would be no more wars."

Now 24 years later, we cannot be a host family for various reasons – but we can be "aunt and uncle." We find with our club's new exchange student (the first in 9 years) that the old magic of connecting with a student and their country and culture, is still there. We feel lucky to have re-connected with the program and with Ali, from Spain.



Ali, RYE delegate from Spain, pictured above.



MAKING A DIFFERENCE BADGE OF MERIT goes to all who participated in Polio Day:

Above: Area 5 Rotarians

Above Right: Truckee Sunrise Rotary

Right: Nevada City Rotarians

MAKING A DIFFERENCE BADGE OF MERIT



This month's "Making a Difference
Badge of Merit" goes to all the clubs
celebrated World Polio Day on October 24th! Here are just a few examples:

and Rotarians who



*The Nevada City Rotarians who hiked from Nevada City through the county with posters and signs celebrating the end game in the fight against polio.

*The Truckee Sunrise Rotarians who raised \$1028 for Polio Plus that morning in a flurry of giving. With these additional funds, they exceeded their Polio Plus goal for the year.

*Reno Rotarian Jerry Hall who was interviewed on the Reno 4PM News about Rotary's efforts to eradicate polio.

*Area 5 Rotarians who came together on the Auburn County Courthouse steps to show their support for polio eradication efforts.

*And all District 5190 Rotarians who made special donations or participated in a special activity to celebrate how far we've come in eliminating polio from the face of the earth! (See more pictures on previous page) **Thank you! WELL DONE!**

Rotary & District Officers 2017-2018

Rotary International

President: Ian H.S. Riseley

President-elect: TBD

Vice President: Dean Rohrs

Treasurer: Mikael Ahlberg

Director Zones 25/26: John Matthews

Non-Voting Advisory Board Members

District Governor Nominee: Randy Van Tassell

District Governor Nominee Designate: TBD

District Conference Chairs: Lindy Beatie

District Executive Assistant: Ginny Lewis

Rotary District 5190 Advisory Board

District Governor: Doug McDonald

Immediate Past District Governor: John A. Sullivan

District Governor Elect: Tina Spencer-Mulhern

District Treasurer: Cheryl Zarachoff

District Secretary: Randy VanTassell

District Administration: Wyn Spiller

Service: Matt Cruse

Foundation: Vic Slaughter

Membership: Steve Mestre

Youth Service: Lindy & Gordon Beatie

Communication: Dave Zybert

Club Administration: Larry Harvey

Public Image: Randy Rascati

Assistant Governors

Area 1: Fred Autenrieb

Area 2: Pete Hochrein

Area 3: Sherilyn Laughlin

Area 4: Dennis Geare

Area 5: Stacy Graham

Area 6: Donna Mullens

Area 7: Richard Forster

Area 8: Joel Muller & Bret Meich

Area 9: Bill Kirby

Area 10: Mel Foremaster

Area 11: Helen Hankins

Area 12: Elizabeth & Jim Cavasso

Area 13: Ramona Delmas



The Rotary District 5190 newsletter is published monthly by District Governor Doug McDonald. Submit stories and photographs (300 dpi resolution digital images only) to Editor Barbara J. Ross at bross@njuhsd.com by the 20th of the month