

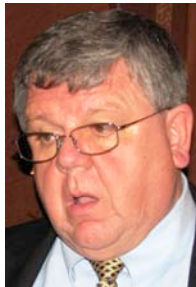
Potomac-Bethesda Rotary Club News

Rotary Club Calendar

April 16 – 6:30pm Meeting - Normandie Farm
April 18 – 8am District Assembly - Holiday Inn – Laurel
April 23 – No meeting
April 25 – International Night at the Austrian Embassy
April 30– 6:30pm Meeting–Normandie Farm
Debby Siebert and Russell Lacey
Marylanders for Sustainable Power
May 7– 6:30pm Meeting–Normandie Farm
Larry Cheilman: Rotary projects
in Africa and Latin America
May 9– Fix-Up Day@Jewish Foundation Group Home
May 14– 6:30pm Meeting–Normandie Farm
Judy Welles: Legends of Cabin John
May 21– 6:30pm Meeting–Normandie Farm
Amgad Fayad
Information Security: What you should know at home

April 2 Meeting Report

At the meeting on April 2, Ed Meagher spoke on the Aleethia Foundation for Wounded Troops. Guests included Alan Grant's son and Gary and Lonnie Thorud. Photos by Nabil Bedewi.



29th Annual Potomac-Bethesda Rotary Club International Night Program Hosted by the Embassy of Austria



3524 International Court NW
Washington, DC 20008 <http://www.austria.org>
Saturday, April 25th, 6:30-9:30 PM
**Please join us in honoring this year's
Rotary Ambassadorial Scholars and
supporting our Orphanage Project in Ethiopia**

International Night Buffet Menu

By Bernard Henry

Passed Hors-D'Oeuvres

Lollipop of Parmesan with Fig and Olive Tapenade
Chimichurri Meatballs
Herb and Garlic Mussels
Spanakopita with Mint-Cilantro Sauce

Appetizers

Chilled Cucumber Soup
with Whipped Cream, Vodka and Dill
Greek Salad

Main Course

Grilled Chicken with Pasta, Pesto and Peas
Baked Cod with Fiji Sauce
Bread & Butter

Dessert

Grand Marnier Cake

Beverages

Red wine – Yellow Tail Cabernet Sauvignon
White wine – Yellow Tail Chardonnay
Sodas, Sparkling water and Flat Water
Coffee, Decaf. Coffee and Tea

www.pb-rotary.org www.rotary7620.org www.rotary.org

April 16, 2009 - Page 1

Potomac-Bethesda Rotary Club News

Rotary Ambassadorial Scholarship Program

The Rotary Ambassadorial Scholarship Program is the world's largest privately funded international scholarship program. Accomplished scholars have their graduate level studies supported in another country. They are selected by their local Rotary clubs and are provided with local Rotarian counselors in the country where they study. Nearly 800 scholarships were awarded for study in 2005-06, each worth US\$26,000. Through these grants, recipients from some 70 countries studied in more than 70 nations. Since 1947 more than 38,000 men and women from 100 nations have studied abroad under its auspices.

The purpose of the Ambassadorial Scholarship program is to further international understanding and friendly relations among people of different countries. While abroad, scholars serve as ambassadors of goodwill to the people of the host country and give presentations about their homelands to Rotary clubs and other groups. Upon returning home, scholars share with Rotarians and others the experiences that led to greater understanding of their host countries.

Ethiopian Orphanage (The Joshua Youth Academy)

We also dedicate International Night to strive to improve the lives and futures of numerous homeless, orphaned children in Ethiopia through the support of the Addis Ababa Ethiopian Orphanage (Joshua Youth Academy).

- There are over 1 million AIDS orphans below the age of 14 in Ethiopia.

- There are 250,000 homeless children present in Ethiopia, with 100,000 present in Addis Ababa alone. Most of these children are under the age of 12.

Your support will help fund the housing and educational needs of this orphanage in Addis Ababa, Ethiopia as it plans to increase its capacity from 50 children to 250 children over the course of the next year, and then to 1,000 in the foreseeable future. The Ethiopian government has just

allocated several hectares of land for their use to increase their capacity. This land will be used to build a larger facility complete with housing and a school for grades K-12.

Photos: Current Residents of the Joshua Youth Academy; A set of desks to be used in the school; The new Joshua Youth Academy school buildings



Future plans include building sustainability through making the school a center of excellence. Children outside of the center will then be invited to attend and will pay tuition, which will make the center self-sustaining and income generating. Items of need in the schools include; desks, chairs, books, blackboards, library resources, educational materials, study aids, and school uniforms. Items of need in the housing facility are tables, chairs, cooking equipment, beds, blankets, and sheets. We are gratefully taking donations toward the items listed above.

Raffle to Benefit the Ethiopian Orphanage (The Joshua Youth Academy)

We are also offering the opportunity to take part in our raffle for which the prize this year is one week in paradise in a 2-bedroom villa at Orange Lake Resort and Country Club, Florida's Premier Vacation Resort, located in

Orlando Florida. 100% of the proceeds will go to the Joshua Youth Academy. The vacation resort is being offered for the week of August 9th -16th, 2009. Orange Lake Resort is in an exciting, convenient location - just

minutes from theme parks and other major attractions, plus great shops and restaurants, too. The resort itself has everything you would need to relax and unwind with your family. Amenities include several sweeping pool complexes for endless family fun, as well as serene sunbathing areas. Details are

listed below:

- Deluxe, 'Duplex-Type' Condominium At Orange Lake Resort & Country Club



www.pb-rotary.org www.rotary7620.org www.rotary.org

April 16, 2009 - Page 2

Potomac-Bethesda Rotary Club News

- 2-Bedroom (One With King-Sized Bed, One With 2 Queen-Sized Beds), 2 Bath, Living Room (With Queen-Sized Sofa Bed). Unit #0404, West Village Complex. Sleeps 8 Comfortably



- 8505 W. Irlo Bronson Memorial Hwy (US Route 192), Kissimmee, FL 34747-8201
- Availability: Week Of 9-16 August 2009 (Week #32)
- About 4 Miles From Disney World
- Kitchen & Laundry Appliances In Unit
- Check Out <http://www.orangelake.com/home.html> for The Many Additional Resort Features/Amenities
- Transportation Not Included
- Raffle Tickets Cost \$20 each, Six for \$100



Thank you in advance for your generosity

Dr. Todd A. Nitkin, President

Rotary Club of Potomac-Bethesda

For additional information please contact us at

rotary.pb@gmail.com

*Please send news articles and photos
to Bob.Nelson@NASA.gov
for inclusion in the newsletter*

Response Form

____ YES, I would like to attend the 29th Annual International Night at the Austrian Embassy, on Saturday April 25th. Please include payment of \$ 60 (non-deductible) for each person attending.

Total: \$60.00 x ____ persons attending = \$ ____

In addition, I would like to purchase items for the Ethiopian Orphanage

Each \$100 covers the cost of one of the following items:

- ____ A set of 4 school uniforms
- ____ A set of 2 student desks
- ____ A kitchen table in the housing facility
- ____ A set of bunk beds for the housing facility

Total: \$100.00 x ____ Quantity = \$ ____

Each \$50 covers the cost of one of the following items:

- ____ A set of 2 desk chairs
- ____ A blackboard
- ____ A set of chairs for the kitchen table
- ____ A set of textbooks or learning materials

Total: \$50.00 x ____ Quantity = \$ ____

Each \$25 covers the cost of one of the following items:

- ____ A set of library resources
- ____ Cooking equipment for the housing facility
- ____ Bedding (blankets, sheets, towels) for the housing facility

Total: \$25.00 x ____ Quantity = \$ ____

Also, please enter me into the Raffle for the "Vacation in Paradise" in a 2-bedroom villa at Orange Lake Resort and Country Club, Orlando Florida

I would like to purchase ____ tickets at \$20 each (6 for \$100), for a total of \$ ____

Please note that the cost of raffle tickets is not Tax Deductible.

Grand Total = \$ ____

Please mail your check payable to the Potomac-Bethesda Rotary Foundation ("International Night" in the memo field) and mail with this form to P.O. Box 59824, Potomac, MD 20859. Please enter your contact information for event updates, raffle and tax receipt purposes:

Name:

Address:

Phone:

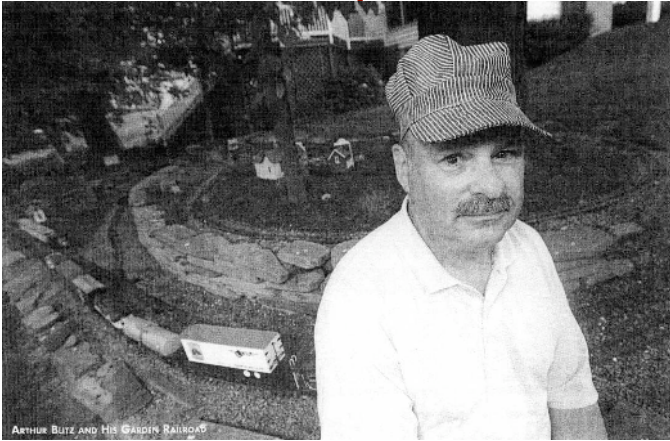
eMail Address:

www.pb-rotary.org www.rotary7620.org www.rotary.org

April 16, 2009 - Page 3

Potomac-Bethesda Rotary Club News

"Comin' Round the Backyard"



By Jeff Jeffrey, Legal Times, March 30, 2009

When Arthur Blitz and his wife Mimi, built their home in Potomac, MD, 12 years ago, they had a few pieces of furniture in their living room and little else – besides a train set.

For the first few years, that was all they needed. "We were focused on laying track," Mimi says.

The track she's talking about has grown into some 450 feet of rail that snakes around the Blitz's backyard, crossing bridges and running past a village with a post office, miniature people, and a general store aptly named Arthur and Mimi's. The backyard setup marks the fulfillment of a dream that Arthur first envisioned more than two decades ago.

Like lots of little boys, young Arthur Blitz had a train set. Then he grew up and put such things behind him. Eventually, he became a senior partner at Paley Rothman and head of the Bethesda-based firm's real estate and financial services practice groups.

But 25 years ago the trains whistled for him again. A friend gave Arthur and Mimi a starter train set, complete with a couple of small locomotives and a few freight cars. Built by LGB Trains of Munich, Germany, one of the first companies to popularize miniature trains, that set brought Arthur's love for the open rail chugging back and reignited his fascination with train mechanics.



The only trouble, Arthur says, was that their house was a bit too small to keep the trains set up on a permanent basis. Other than occasionally being brought out to run in a circle on the living room floor, the trains remained boxed up in storage. So when the Blitzs started looking for a new house, Arthur kept his railroad in mind.

In October 1997, the couple and their twin daughters, Leslie and Robin, moved into the Potomac house, with its large, flat, shady backyard—the perfect place to build a garden railroad. Sheer coincidence, of course.

"It wasn't the reason" they bought this particular lot, says Arthur, "but it had a great yard for a garden railroad, so why not?"

All Aboard

These days, the Blitz collection boasts 20 garden-scale passenger, freight, flatbed, and tanker cars, each one about the size of a loaf of bread. Arthur's favorite locomotive is the LGB Denver, South Park and Rio Grande Railroad mogul, a type of steam engine best known as the train robbed by Butch Cassidy and the Sundance Kid in the 1969 classic movie starring Paul Newman and Robert Redford. Engine-wise, he also has a model of a Shay-gear locomotive like the ones built by Lima Locomotive Works, a GP-9 diesel engine

that features the Boston and Maine logo, a smaller NW-2 diesel engine, and a Mikado steam engine, which Arthur says is similar to the one Humphrey Bogart catches in "Casablanca" as he leaves Paris ahead of the Nazi invasion. The GP-9 is currently pulling four freight cars, a tanker car, and a caboose along a three-wall route in Arthur's law office.

"Clients love it," he says, though he also notes, "Some of my partners think I'm nuts."

All of Blitz's trains run on battery power, which he describes as the most convenient mode of power. A handheld transmitter allows him to stop and start his trains with the push of a button.

"Electric power is too complicated for me. You have to keep the tracks clean so you have good contact. You have to worry about short-circuits because your train will stop and you won't know why it did." Blitz says.

www.pb-rotary.org www.rotary7620.org www.rotary.org

April 16, 2009 - Page 4

Potomac-Bethesda Rotary Club News

He concedes that battery power has its drawbacks, too. "Battery power isn't as strong as electric power so you can't pull as many cars." But horsepower isn't a major concern for him because his trains usually pull only about eight cars at a time, depending on the locomotive. Another problem with battery power is that "you have to worry about replacing batteries."

Neither battery power nor electric power is as complicated as using steam-powered models. Yes, there are models that run on steam just like old-fashioned trains. But even avid hobbyists such as Blitz have limits: Those trains can cost thousands of dollars and tend to be temperamental. Blitz says they're too much of a hassle for him.

Brave New World

While Arthur can geek out with the best of them on the technical aspects of the hobby, Mimi, who works in human resources at the National Institutes of Health, says she prefers crafting the look of the village laid out alongside the garden railroad. (Their daughters, Arthur says, "have absolutely no interest in trains.") "I like the idea of creating a miniature world," Mimi explains. "That's what I find interesting about trains."

The Blitzs' current setup resembles a rural town set off a railway spur in the 1930s or 1940s. About 20 buildings sit in the center of two parallel sets of tracks, which let the Blitzs run two trains at once. An additional single track loops away and back toward the town at one end. It looks like a nice place to visit, if you happen to be 3 inches tall.

Arthur and Mimi are planning a second village (the couple subscribes to *Garden Railways* magazine for ideas). Mimi says she's leaning toward a 1950s-era town, complete with an amusement park. They plan to put it at the center of the large loop.

But for now they're just getting all the post-winter maintenance out of the way. Winter months can be hard on a garden railroad. As the ground freezes and thaws, the tracks buckle, which prevents the trains from running smoothly. Weeds sprout up, blocking the trains' path. Squirrels and birds drop unpleasant obstacles on the tracks. All in all, garden railroads

contend with issues similar to those that plague real railroads, and Congress has yet to offer model railroad proprietors a tax break.

Arthur says he "couldn't even begin to guess" how much he has spent building his private railroad. As with any hobby, it's probably best not to tally up the total cost. Individual cars can range in price from \$50 to \$500, and locomotives can cost anywhere from \$350 to \$4,500. "You can get a Chevy Neon or a Maserati," Blitz says.

A Garden Society

The elaborate layout in the Blitzs' backyard requires the help of professional landscapers, which doesn't come cheap, either. Over the years, the couple has used five or six different ones, but these days they work with Brian Donovan, who runs Alternative Terrains in Silver Spring, MD. Donovan says he charges clients between \$2,000 and \$3,000 for a

small start-up garden railroad job. He and Arthur Blitz wouldn't say how much the Blitzs have spent, but their railroad is the largest one Donovan has done so far.

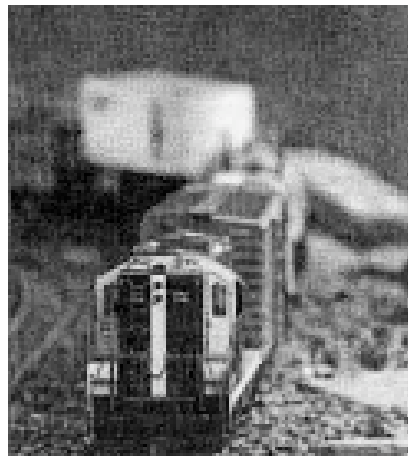
A garden railroader himself, Donovan started designing garden railroads a few years ago. He has two separate railroads in his own backyard, and serves as the immediate past president of the Washington, Virginia and Maryland Garden Railway Society, which has about 160 members.

That means Donovan is intimately familiar with the challenges of backyard trains. He knows, for example, that if the grade of the land rises by more than 3 inches over 8 feet, the trains will stop, pardon the pun, in their tracks.

"There are two different types of people who are going to run trains," Donovan says. "The guys who want to go all out on authenticity and the guys who like to sit back, watching the trains run. For me, I always preferred sipping a beer and watching the trains run."

Just watching the trains run may sound tempting to Arthur Blitz, but he admits he's too busy to get out and play with the railroad all that often.

"I enjoy the idea as much as the reality," he says. "It's just good clean fun."



www.pb-rotary.org www.rotary7620.org www.rotary.org

April 16, 2009 - Page 5