



District 5340

5/17/2019

Established 1993

### Opening Remarks and Announcements



President Elena opened the meeting by welcoming our speaker and the only guest, **Emily Fleet (see photo)**. Elena led the flag salute and asked Sheri to lead the Four Way Test.

Elena commented on our recent Bowling tournament. We still don't have a total for the profit because she's busy, and Jeff, Fern & Manuela are in Guatemala on a vision mission. They are serving the annual needs of people from small villages who come from miles around for cataract surgery, vision testing and glasses. Other diseases of the eyes are also treating during this mission trip. Fern has commented in the past this is one of the most exhausting, yet rewarding things she's ever participated in.



Our up-coming feeding the homeless night is fast approaching. We'll meet in the parking lot at 5:00 PM of Jewish Family Services on Balboa Ave. May 22, 2019.

**Address:** 8804 Balboa Ave, San Diego, CA 92123. If you've volunteered to help with cooking the chili meet at the Alba's house around 4:30 to assemble the chili. If

you forgot to bring food donations today drop it off at the Alba's house before Wednesday afternoon. Peggy is cooking the meat at her own house and taking it to Elena's for the final assembly.

### La Mesa Sunrise Rotary Leadership 2018-2019

#### Officers

President: Elena Lujan-Alba

Imd Past Pres: Betty Howland

Pres Elect: Jeff Hall

Secretary: Elly Dotseth

Treasurer: John Stremlau/  
Laurel Nishida

RI Foundation: Christine Evans

#### Directors

Int'l Service: Hugo Murillo

Membership: Bobbie Warren

Pub Relations Megan O'Dowd

Youth Interact: JoAnn Bergquist

Peace Chair: Clara Harris

### Credits and Acknowledgements

- Pledge: Elena Lujan-Alba
- 4-way test: Sheri Snively
- Photos: Bill Pogue
- Raffle (\$20): Max Scrivens
- **Minutes: Lynn DeHaven**



If you want to donate to the people living in their cars there, look at the Jewish Family Services website for a list of appropriate donations for people who live in their vehicles. They don't have much room for stuff so it's a kindness to not overburden them with things they don't need.



We will be dark for the July 5<sup>th</sup> meeting day because of the 4<sup>th</sup> of July celebration. Jeff's term as President starts the following Friday.

Next week Elena will be our speaker. Her topic is "The origin of the 501C3 organization "Compassion for African Villages."

June 30<sup>th</sup> is the deadline (but 2 weeks before that in order to have the accounting done) for making your annual donation of a minimum of \$10, more would be appreciated, to "The Rotary Fund." It's easiest to have a monthly automatic donation made directly to your credit card, but a one-time only donation can be made online to the Rotary International Website ([www.rotary.org](http://www.rotary.org)). We watched a short video enumerating the ways the money is spent:

- GSE study groups – a 4 – 6-week group study at selected places world-wide
- **Masters in World Peace and Justice** focusing on peace and conflict resolution through health, water, sanitation, hunger abatement and so on. Rotary supports up to 140 scholars annually to Master's Degree at select Universities world-wide.
- Matching Grants
- Polio Plus – the drive to eradicate polio from the earth. So far, we've managed a 99.9% reduction in Polio infections, but the virus is only one plane ride away from

## Member's Highlights



[www.LaMesaSunriseRotary.com](http://www.LaMesaSunriseRotary.com)



La Mesa Sunrise Rotary \* Meetings each Friday 7:15 am \* Marie Callender's 6950 Alvarado Rd., SD, CA 92120s



starting a new outbreak. Only 100% eradication will be good enough.



Unfortunately, the needs have grown so much that contributions to this fund have not been able to keep up with the needs. Please help and be generous. Donate today if you've not done so this year. Help us keep our club's EREY status. (Every Rotarian Every Year). Then we will qualify to receive some of those 'Matching Grant' funds to do our good work. the Rotary year runs from July 1 to June 30<sup>th</sup>. Jeff's Presidency marks the beginning of our new year for this club.



Remember to gather at the Alba's house 5:30 PM on May 31, 2019 for an evening of Fellowship in lieu of the morning meeting. It's the fifth Friday of the month. The Board decided we should have an evening of frivolity instead of a regular meeting

on months that have a fifth Friday. Address: 5548 Fontaine St. San Diego, CA 92120. Home phone: 619 458 9634

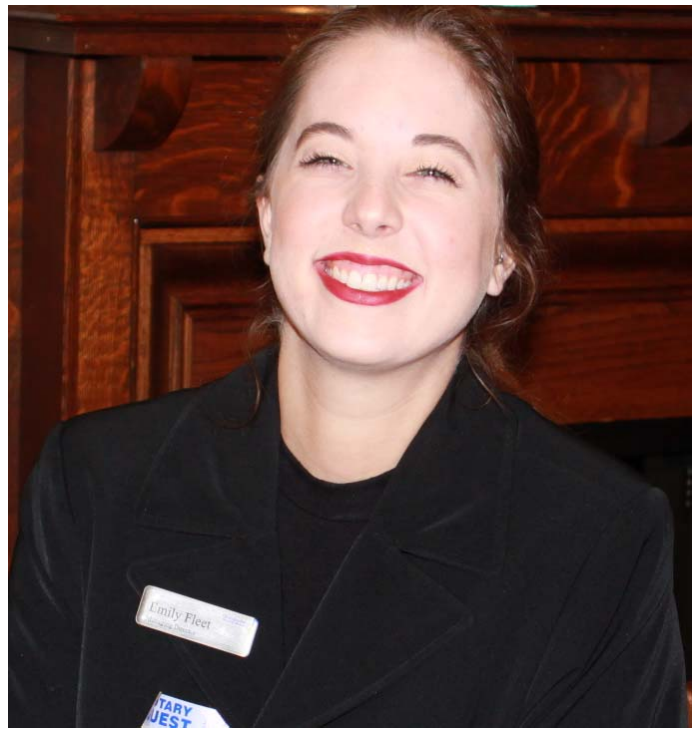
## Guest Speaker/Presentation: "The Playwright's Project" by Emily Fleet

Emily graduated from UC Santa Cruz with a degree in Playwriting just after this 501C3 organization was formed. She took a position as office manager and now is the organization's Director. The Playwrights Project, founded in 1985 by Deborah Salzer, is a nonprofit corporation dedicated to arts education.

## Member's Highlights



## Guests and Visitors



[www.LaMesasunriserotary.com](http://www.LaMesasunriserotary.com)



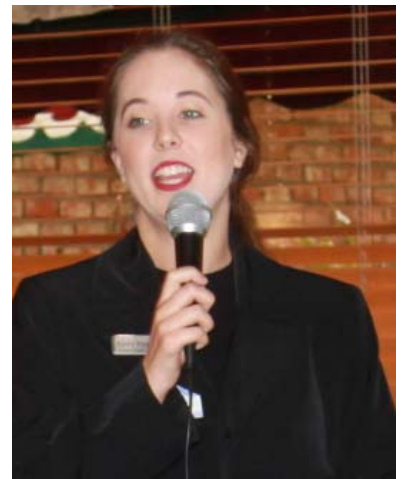
La Mesa Sunrise Rotary \* Meetings each Friday 7:15 am \* Marie Callender's 6950 Alvarado Rd., SD, CA 92120s



Their mission is to advance literacy, creativity and communication by empowering individuals to voice their stories through playwriting programs and theatre productions. The Project produces 4 -8 scripts as Plays by Young Writers at a professional theatre in San Diego. Who can submit plays?

■ Californians under the age of 19. Scripts are evaluated in 2 groups: under 15 and 15- 19.

Goals of the organization are to help increase authentic story-telling, creativity and collaboration skills. Writing plays increases these skills, listening, critical thinking, self-analysis, problem solving, and increases empathy. They don't allow plays glorifying drug use or violence. They may depict the results of such actions. Besides the aforementioned Young Playwrights Contest they provide a written Playwright program of instruction for purchase by schools, and they provide professional actors to act a previously written play for beginners in the program. Some have never been to a play and only have seen movies or TV. They don't know the differences between dialogue and a narrative story. Then each student writes a one-act play. Many tell their own story.



This group reaches out to and has a high presence in the Juvenile Court system, community schools, prisons, seniors, military, and to a lesser degree, school districts.

They provide one to one mentoring, two live performances by professional actors: one in the beginning and then the winner may get to see their play acted by professionals. They've been praised by critics and audiences alike. They also collaborate with Universities (SDSU is one example) and have served over 10,000 people.



[www.LaMesasunriserotary.com](http://www.LaMesasunriserotary.com)



La Mesa Sunrise Rotary \* Meetings each Friday 7:15 am \* Marie Callender's 6950 Alvarado Rd., SD, CA 92120s