



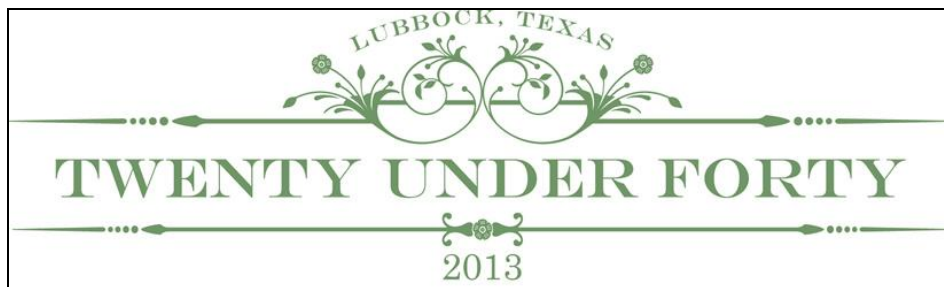
# Metro Banner

**Metropolitan Lubbock Rotary**

**District 5730 -- August 13, 2013**

## Friday: The Chamber's "20 Under 40" Program

On Friday we'll learn from Phyllis Johnson Jones, Vice President of the Leadership Division at the Lubbock Chamber of Commerce, about the "20 Under 40 Program" of Young Professionals of Greater Lubbock which is a "group of active, civic-minded professionals, who see Lubbock as a great place to live, work and play. YPGL seeks to develop emerging leaders and attract and retain diverse young talent throughout the Lubbock region," as described at their website.



On May 30 our own Andy Penney of Frenship ISD and the Voice of the Tigers was honored as a member of the 2013 class of "20 Under 40."

To learn more about Phyllis Johnson Jones go to page 8.

**Apple Butter Festival**  
**September 14-15**  
**Set Up Friday evening, September 13**

## Y'all Come: Monday, August 26, Taste Beef, Raise \$\$\$ for Metro's Charitable Projects



We can raise another \$1100 for Metro's charitable projects, by tasting beef on Monday evening, August 26. We'll need 22 for the 6-7 PM time slot and another 22 that evening at 7-8 PM at Cowamongus in the Animal Science Building on the Texas Tech campus just northwest of the USA – United Spirit Arena. For an hour's work, each of our 44 volunteers will earn \$25 toward Metro service projects and overall we'll add another \$1100 to our charitable projects budget.

Email Kim Martin at [kmartin@ramarcom.com](mailto:kmartin@ramarcom.com) to volunteer.

## Don't Break a Kid's Heart; Give Walter a Mohawk

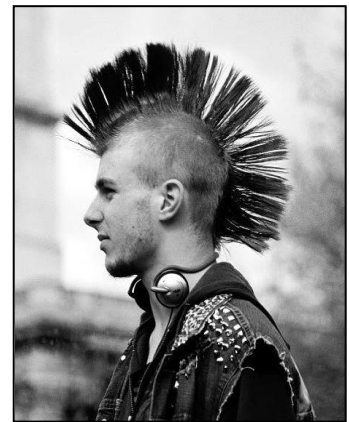


Last Friday I sent a picture after my beard was shaved to Caryl's caregiver whose 10-year-old son was crestfallen. He told his mom he had expected to see a Mohawk and she explained that enough money hadn't been raised yet. He said determinedly, "OK, take me to the bank on Monday so I can get a loan."

True story. Let's not disappoint him. If we raise \$5000 for the Rotary Foundation by Friday the 16th, Walter will get a Mohawk.

After we raise \$5000 we'll hold a silent auction with bids starting at \$500 to earn the right to decide the permanent color for Walter's hair – red, green, pink, blue, rainbow. Whatever you'd like.

But the first thing to do is get to the \$5000 mark, so a 10-year-old kid doesn't have to be burdened by a bank loan.



Make checks to Rotary Foundation and give them to David McAlexander or go on line to the Rotary Foundation to use a credit card for your donation.

# Friday's Program – Port-to-Plains Alliance



## Ports to Plains

Think equipment – big equipment moving.  
Think energy. North American energy.  
Think agricultural products moving to port.

Metro Rotary had a busy morning on the 9th of August. In addition to the shearing of Walter's beard, we enjoyed breakfast with several wonderful guests and a very interesting presentation of the Port-to-Plains Alliance by Michael Reeves, President. He discussed the development of the highway system connecting Canada,

United States and Mexico. Studies show that the improved highway system has reduced accidents in Texas by nearly 50 percent along with reductions in other states. Michael told us about the importance of this system in transporting agricultural products from farms to ports throughout North America. He has found many difficulties in improving the highway systems throughout the states, Canada and Mexico, but has made a lot of progress over the past few years connecting I-27 with other highways and improving highway safety and economic output.

*(Thanks to Jim Graves for recapping last Friday.)*

## Caryl's Questions: Read On For The Answers

(Caryl's College of Useless Knowledge)

How old is Mickey Mouse? How/where did he first appear?

When did the Mickey Mouse Club first appear on TV? Can you sing the theme song?

See page 7  
for answers.

# Petchlada (Petch) Jansiriyotin From Thailand



Petch arrived from Chiang Mai, Thailand, via Bangkok, Seoul and Dallas on Sunday the 4th and spent her first week in Lubbock with Bill and SarahLee Morris. She moved to Caryl and Walter Smith's home on Sunday. She's a 5th year medical student back home – comparable to the 3rd year of medical school in the U.S. (In Thailand med students start their medical majors in their freshman year.) She's spending August in Lubbock to observe training for family practice for two weeks and then infectious medicine for her final two weeks.

Last Friday Petch presented a banner to the club from the Mae Wang club in Thailand and we gave her a Metro Lubbock banner to take home with her.

## Weekly Programs – Consult ClubRunner

Want to know what the upcoming programs have been planned by President Elect SarahLee Morris and friends? Go to our club's ClubRunner homepage (<http://www.clubrunner.ca/Portal/Home.aspx?accountid=9071>) and click on Speakers to get to this screen.

**Rotary Club of Metropolitan Lubbock**

RUSSELL-HAMPTON CO. Quality Lapel Pins

Home Stories News Calendar Speakers Login

>> Speakers

### Speakers

Aug 02, 2013  
**Haley Patton**  
 "Rotary Youth Exchange year in Austria"

Aug 09, 2013  
**Michael Reeves**  
 "Ports-to-Plains Alliance"

Aug 16, 2013  
**Phyllis Jones**  
 "Lubbock Chamber of Commerce 20 Under 40 Program"

Aug 23, 2013  
**Gail Barnes**  
 "South Plains Wildlife Rehab Center"

Aug 30, 2013  
**Susan Brints & David McAlexander**  
 "The Rotary Foundation"

# Meals on Wheels Drivers

August 16

Matt Smith and Phil Houchin

August 23

Bonnie Schwarzentraub and Matt Smith

August 30

SarahLee Morris and Dennis Reeves

September 6

Ken Clowes and Dan Carpenter with Walter and Caryl Smith



Thanks Ken Clowes, past president of the Rotary Club of South East Nassau (The Bahamas), for coordinating MoW for Metro.

## Where's Waldo? Where's Ken?



The short answer is, "Ken's wherever Elyn is." She and Ken are traveling D5730 as a team. Here's Ken and Elyn's full schedule this week and next.

Monday	12	Greater SW Lubbock
Tuesday	13	Levelland Noon
Wednesday	14	Floyddata
Thursday	15	Littlefield
Friday	16	Levelland Breakfast

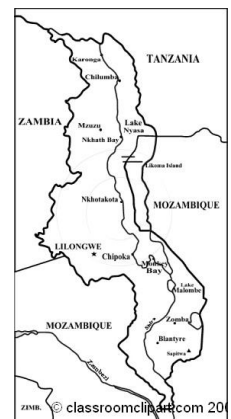
Monday	19	
Tuesday	20	Kermit
Wednesday	21	Monahans
Thursday	22	Pecos
Friday	23	

## How Large is Malawi?

Which of the following is closest to the size of Malawi?

- a. Pennsylvania      b. Texas      c. Alaska      d. Iceland

Answers later in this Banner.



# Happy August Birthdays and Anniversaries to:



## Birthdays

- 8/07 Mason, Greg  
 8/08 McAlexander, David  
 8/10 Key, John  
 8/14 Chalmers, Doug  
 8/22 Schwarzentraub, Paul  
 (Bonnie's husband)

## Anniversaries

- 8/21 McCloud, Bobby & Amber

## Cartoon of the Week

Does anyone appreciate this cartoon?



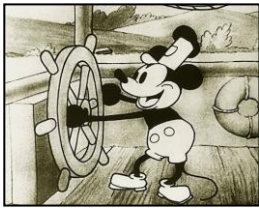
## After "S Car Go," Here's Another Driving Joke

There's a senior citizen driving on the highway. His wife calls him on his cell phone and in a worried voice says, "Herman, be careful! I just heard on the radio that there was a madman driving the wrong way on Route 280!"

Herman says, "I know, but there isn't just one, there are hundreds!"

---

## Answers to Caryl's Questions



How old is Mickey Mouse? How/where did he first appear? Mickey Mouse debuted in 1928 in the short film, *Steamboat Willie*, one of the first cartoons with sound. So Mickey's about 85 years old, close to the age of the Lubbock Rotary Club, sometimes known as the downtown club.



When did the Mickey Mouse Club first appear on TV? Can you sing the theme song? The Mickey Mouse Club premiered on October 3, 1955, with Sharon Baird, Bobby Burgess, Lonnie Burr, Tommy Cole, Annette Funicello, Darlene Gillespie, Cubby O'Brien, Karen Pendleton and Doreen Tracey (Walter remembered only one). Here are the words I remember:

Come along and sing a song  
And join the jamboree!  
M-I-C-K-E-Y M-O-U-S-E

---

## Answers to Malawi's Size

Malawi is 45,745 square miles which is about the same size as Pennsylvania or three quarters the size of our District 5730.

Here are the sizes in square miles of the states and country in the question and some others of interest.

- Texas - 268,820
- Pennsylvania - 46,055
- Alaska - 663,300
- Iceland - 39,768
- Lubbock County - 901
- Texas Panhandle - 25,887
- Llano Estacado - 37,452
- D5730 - 61,825

Speaking of D5730, our Rotary district is about half the size of New Mexico and about equal to Georgia.



## “20 Under 40” Program Continued

Phyllis Johnson Jones, who has been with the Lubbock Chamber of Commerce almost six years and is Vice President of the Leadership Division at the Chamber, oversees the Leadership Lubbock program and New Century Leadership, the high school program. She also oversees the Young Professional group and spearheads the Community Prayer Breakfast event each May, along with leading the annual LeaderCast event.

The purpose of the Young Professionals of Greater Lubbock is to:

- enable young professionals with opportunities to network with other young professionals
- represent a growing population in the city of Lubbock
- cooperate with businesses and city entities by forming partnerships
- serve as a resource for young professionals in the Region
- promote and support civic and charitable opportunities within the community

Most recently Phyllis completed her I.O.M. (Institute of Organizational Management), a four year course that was held at Villanova University in Pennsylvania. In November 2012, she completed the Leadership Texas program, a yearlong program that focuses on learning more about Texas and connecting women from across the state.

Phyllis did corporate training for more than ten years for companies including Covenant Medical Center, University Medical Center, Suddenlink and Southwest Airlines.

She has been an active member of the Junior League of Lubbock and is now an involved sustainer for the organization. She also serves as a volunteer at First Christian Church.

Phyllis, a 1994 graduate of Texas Tech University, has two sons, Kevin, a graduate of Texas Tech, and Stuart who is a junior at TTU.

**Apple Butter Festival**  
**September 14-15**  
**Set Up Friday evening, September 13**