



Metro Banner

Metropolitan Lubbock Rotary

District 5730 -- August 20, 2013

We Need You and Others You Bring for Monday, August 26, Beef Tasting

Metro Charitable Activities
Supported by Our Fundraisers

- Unsung Heroes and Tinney Award
- Meals on Wheels
- Harwell Elementary Outdoor Lab
- Westwind Elementary Children's Needs
- Rotary Readers at Dupre Elementary
- RYLA (Rotary Youth Leadership Awards)
- Diabetes Camp, and others

We need a few more volunteers for the 6-7 PM and 7-8 PM time slots at Cowamongus in the Animal Science Building on the Tech campus just NW of the USA. **You can taste on August 26, even if you have tasted before.** Please email Kim Marin at kmartin@ramarcom.com.

For an hour's work, each of our 44 volunteers will earn \$25 toward Metro projects listed to the left; and overall we'll add another \$1100 to our charitable projects budget.

Email Kim Martin at kmartin@ramarcom.com to volunteer.

Friday: South Plains Wildlife Rehab Center

On Friday we'll hear from Gail Barnes of the South Plains Wildlife Rehabilitation Center, a non-profit founded in 1988 to provide humane care and rehabilitation to orphaned, ill, injured and displaced wildlife so they can return to the wild. The SPWRC also provides environ-



mental education, using a rational approach to appreciation and conservation of natural resources for future generations. The Center's emphasis is on wildlife as a natural resource.

Last Friday: Phyllis Johnson Jones, 20 Under 40



Phyllis Johnson Jones, VP at the Lubbock Chamber of Commerce, talked with us about the Chamber's "20 Under 40" program and other programs for young Lubbock professionals.

This year our own Andy Penney is part of the 2013 "20



Under 40" program; and we were reminded that

Metrarian Fernando Valle was a member of the 2010 group.



Apple Butter Festival
September 14-15
Set Up Friday evening, September 13



Caryl's Questions: Read On For The Answers

(Caryl's College of Useless Knowledge)

Where is the Pro Football Hall of Fame located? Why there?

What was the first hit single for the Beatles? In what year was it a hit?



See page 6 for answers.

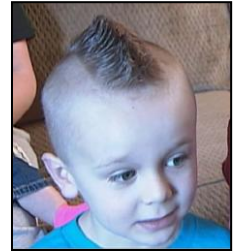
Walter's Mohawk Extended One Week



Last Friday a rumble arose from the assembled masses when a clean-shaven President Walter said we hadn't raised enough money for him to get a Mohawk; so the deadline has been extended one week. \$5000 for the Rotary Foundation will give him a Mohawk. You can give a check to the Rotary Foundation or cash to David McAlexander; or you can go to the Rotary Foundation charitable website at <https://www.rotary.org/en/Contribute/Pages/ridefault.aspx> where you can use your credit card. Then tell David McAlexander about your contribution so he can add your amount to the total.

Will the Mohawk make him look that young???

Friday the 23rd is the deadline. The goal: \$5000 to the Rotary Foundation.



Friday, August 30:

Candi Whitaker, Tech Women's Basketball Coach



Mark your calendars; bring your kids. Candi Whitaker, first year coach for the Tech women's basketball team, will speak at our Metro Lubbock Rotary meeting on Friday, August 30. The Canyon native was the point guard on two Sweet Sixteen teams before graduating in 2002. Since then she has coached to great success at the University of Missouri – Kansas City and Oklahoma State University where she was the Associate Head Coach prior to being selected for the Tech head coaching job.



Thanks to Director-at-Large Bobby McCloud for securing Coach Whitaker for August 30.

Apple Butter Festival
September 14-15
Set Up Friday evening, September 13

Weekly Programs – Consult ClubRunner

Want to know what the upcoming programs have been planned by President Elect SarahLee Morris and friends? Go to our club's ClubRunner homepage (<http://www.clubrunner.ca/Portal/Home.aspx?accountid=9071>) and click on Speakers to get to this screen.

Aug 23, 2013

Gail Barnes

"South Plains Wildlife Rehab Center"

Aug 30, 2013

Candi Whitaker

"Texas Tech Women's Basketball"

Sep 06, 2013

Stan Beam

"Open Road Mobility"

Sep 13, 2013

Various Experts

"ClubRunner Demonstration"

Sep 20, 2013

Marie Hanza

"Habitat for Humanity"

Sep 27, 2013

Susan Brints & David McAlexander

"The Rotary Foundation"

Meals on Wheels Drivers

August 23

Bonnie Schwarzentraub and Matt Smith

August 30

SarahLee Morris and Dennis Reeves

September 6

Ken Clowes and Dan Carpenter with Walter and Caryl Smith



Where's Waldo? Where's Ken?



The short answer is, "Ken's wherever Elyn is." She and Ken are traveling D5730 as a team. Here's Ken and Elyn's full schedule this week and next.

Monday	19	
Tuesday	20	Kermit
Wednesday	21	Monahans
Thursday	22	Pecos
Friday	23	

Monday	26	Amarillo East
Tuesday	27	Canyon
Wednesday	28	
Thursday	29	Amarillo South and Amarillo
Friday	30	Panhandle

Happy August Birthdays and Anniversaries to:



Birthdays

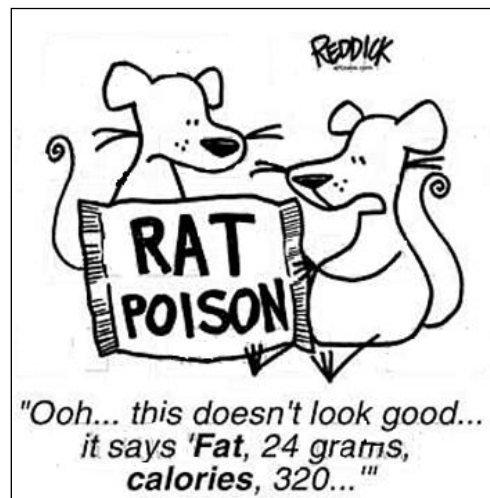
8/07 Mason, Greg
8/08 McAlexander, David
8/10 Key, John
8/14 Chalmers, Doug
8/22 Schwarzentraub, Paul
(Bonnie's husband)

Anniversaries

8/21 McCloud, Bobby & Amber

Cartoon of the Week

I got a big kick out of this one.



For This Week's Speaker, An Animal Joke

Two sisters, a blonde and a brunette, inherit the family ranch. Unfortunately, after just a few years, they are in financial trouble. In order to keep the bank from repossessing the ranch, they need to purchase a bull so they can breed their own stock.

The brunette balances their checkbook, then decides to take their last \$600 dollars out west to another ranch where a man has a prize bull for sale. Upon leaving, she tells her sister, "If I decide to buy the bull, I'll contact you to drive out after me and haul it home."

The brunette arrives at the man's ranch, inspects the bull, and decides she does want to buy it. The man tells her that he can sell it for \$599, no less. After paying him, she drives to the nearest town to send her sister a telegram.

She walks into the telegraph office, and says, "I want to send a telegram to my sister telling her that I've bought a bull for our ranch. I need her to hitch the trailer to our pick-up truck and drive out here so we can haul it home."

The telegraph operator explains that he'll be glad to help her, then adds, "It's just 99 cents a word."

Well, with only \$1 left after paying for the bull, the brunette realizes that she'll only be able to send her sister one word. After thinking for a few minutes, she nods, and says, "I want you to send her the word, comfortable."

The telegraph operator shakes his head. "How is she ever going to know that you want her to hitch the trailer to your pick-up truck and drive out here to haul that bull back to your ranch if you just write, comfortable?"

The brunette explains, "My sister's a blonde. She'll read it slowly."

Answers to Caryl's Questions




The Pro Football Hall of Fame is located in Canton, Ohio, where in 1920 the National Football League was founded. Two charter members, the Chicago Cardinals (now the Arizona Cardinals) and the Decatur Staleys (now the Chicago Bears), are still in existence.


The answer to the question about the first Beatles hit depends on whether you live east or west of the Atlantic. "Love Me Do" was the first British hit for the Beatles; but "I Want to Hold Your Hand" was the first American hit.

Heard at PETS: Ten Two-Letter Words to Live By

If it is to be,
it is up to me.



How to Propose a New Member

1. Talk with someone you'd like to invite to join Metro.
 2. When he or she expresses an interest, fill out Part A of the "Membership Proposal Form" found at http://www.rotary.org/RIdocuments/en_pdf/254en.pdf.
 3. Give the completed form to Linda McMurry, Metro's Secretary.
 4. After the Metro Board approves the proposed member, the Board will arrange to talk with the proposed member about membership in the club and ask her or him to fill out Part B of the "Membership Proposal Form."
 5. Information about the proposed member will be published to club members; and if no objections are raised, after seven days the proposed member will become a member of Metropolitan Lubbock Rotary and the club secretary will report their membership to Rotary International.
 6. The club president will arrange a formal induction ASAP at a club meeting.
- 

**Apple Butter Festival
September 14-15
Set Up Friday evening, September 13**

Election of New Officers

Phil Houchin (chair), David McAlexander and Joey Cooper, all Metro Lubbock Rotary Past Presidents, have been appointed to serve on this year's Nomination Committee. In line with our by-laws, they will present a slate of nominees at the October 4 regular club meeting with the actual election in November for the following offices. Nominations can be made from the floor on October 4.

- a. president (for 2015-16; will be president nominee until 7.1.14; then president-elect until 7.1.15)
- b. vice president, secretary, treasurer and sergeant-at-arms (for 2014-15)
- c. two directors (for 2014-16 to replace Bobby McCloud and Brian Murry)
- d. Notes per our by-laws: SarahLee, current president-elect, automatically becomes president for 2014-15. Elyn, Linda, Bonnie and Travis can be nominated for another one year term, their 2nd, in their current office; they can serve for no more than three consecutive terms. Brian can but Bobby can't be nominated for another term as director, since another term for Bobby will push him past the three years max a director can serve.

Please talk with members whom you think would make good club officers and suggest their names to one of the members of the Nominations Committee. At present we have the following 43 members.

Agnello, Mary Frances	Houchin, Phil	Patterson, Ken
Alley, Craig	Key, John	Penney, Andy
Brints, Cal	Martin, Kim	Pittman, Kirk
Brints, Susan	Mason, Greg	Pittman, Melanie
Carpenter, Dan	McAlexander, David	Price, Jerry
Chalmers, Doug	McCloud, Bobby	Reeves, Dennis
Clowes, Ken	McMurry, Linda	Sandefur, Brad
Condray, Ken	Morris, SarahLee	Schwarzentraub, Bonnie
Cooper, Joey	Morris, Bill	Smith, Caryl
Cooper, Travis	Morton, Glen	Smith, Matthew
Evans, Bill	Murry, Brian	Smith, Walter
Flynt, Elaine	Nelson, John	Thomas, Kirk
Gallegos, Belinda	Pamperin, Roger	Valle, Fernando
Graves, Jim	Patterson, Elyn	Wierzba, Susan
Guinn, Brent		