

Chulatarian



**ROTARY CLUB
OF CHULA VISTA**

The weekly newsletter of the Rotary Club of Chula Vista

Chartered February 16, 1926 - Club Number 908 - District 5340
Rotary Club of Chula Vista meets Fridays at 12:10 p.m.
Chula Vista Golf Course Banquet Room, 4475 Bonita Road, Bonita, CA 91902

April 19, 2019
Interfaith Shelter Network

OFFICERS 2018--2019

Dan Dredla
President
daniel.dredla@sharp.com

Bob Silvas
President-elect
bsilvas@silvgroup.com

Zaneta Encarnacion
Secretary
zanencarnacion@swccd.edu

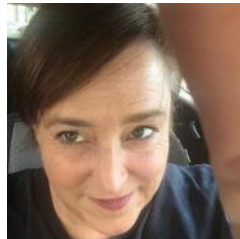
Diane Wages
Treasurer
dfwages@att.net

Carmen Sandoval
Past President
csandovalzf@gmail.com

Executive Secretary
Duane Buckingham
execsec@chulavistarotary.org

P.O. Box 626,
Chula Vista, CA 91912
619-934-6107

Club Website:
www.Chulavistarotary.org



Abigail Shrestha, Rotational Shelter Program Manager for Interfaith Shelter Network.

Our Vision is to eliminate homelessness in the urban communities of San Diego Country through a cooperative partnership with faith-based communities, related government programs and social service agencies. The Interfaith Shelter Network does not discriminate based on race, color, religion, gender, sexual orientation, national origin, age or disabilities in hiring practice or provision of services.

The "crown jewel" of the Interfaith Shelter Network of San Diego is the Rotational Shelter Program. This is a seasonal emergency shelter program that takes in men, women and families with children.

The Network involves over 120 congregations of all denominations county-wide in a Rotational Shelter program. About 70 of the congregations host the program in their facilities for two or four weeks a year and the remainder serve in a valuable support role, providing volunteers for meals and overnight hosting, transportation and donations.

Through neighborhood congregations linking with others, people are sheltered where there are no shelters and receive the understanding and support of congregations when previously all they knew was fear and uncertainty. Congregations benefit by getting to know homeless individuals personally and the mutual sharing of stories is beneficial to both.

Coming Soon

April 26—Torrey Pines Surf Ministry

April 27 Rotary at Work Day

May 3—Recruiting Millennials to Rotary and Battery Recycle Day



CLUB BOARD MEETING
3rd Thursday of each month.
6:00 p.m.
Administrative Office of Sharp
Medical Center
751 Medical Ct
Chula Vista
619-502-5839

DISTRICT 5340

Publication Information
Chulatarian Newsletter is published
by The Rotary Club of Chula Vista
P.O. Box 626
Chula Vista, CA 91912
Bus: (619) 934-6107

execsec@chulavistarotary.org

**For Information and
Input:**
Contact Newsletter Editor
Jerry May
gerald.may@prodigy.net

Articles and Inserts:
**Please send by
Noon Saturday
for consideration.**

**Please note: Every submission
may not be included due to
space constraints.**

Friday April 12, 2019

For full meeting video, go to:



Our own Past President and railroad enthusiast Chuck Bevan introduced Jim Price to talk about the history and future of the San Diego and Arizona Railway. Jim lives in Nevada where he is restoring a caboose out of wood. He has written a book on the railways of San Diego County and is promoting the centennial of the SD&A which will be celebrated this

November at the Campo Railroad Museum.

The first railway was the Sante Fe in 1885 terminating in National City on land provided by the Kimball brothers. Later, the several railways in San Diego County merged to the San Diego Electric Railway with John D. Spreckels as the prime mover with his wealth and investments in San Diego. It was he who planned the SD&A in 1906 to create a direct-ly easterly railway from San Diego without having to go through Los Angeles. The groundbreaking happened in 1907. It was to have 148 miles of track (44 miles in Mexico), 21 tunnels and 2 miles of trestles. Because of the challenging terrain it went through, it was called "The Impossible Railroad".

The building of the railway had to overcome the Mexican Revolution (1910), the flood created by Charles Hatfield where 25% of the railway was lost (1916) and WWI (1917). The "Golden Spike" was laid at the Carizo Gorge on 11/15/1919 after twelve years of effort and millions of investment. A trip from San Diego to El Centro took seven hours. The wooden trestle over Goat Canyon is the largest in the U.S.

The last passenger train was in 1951. Subsequent natural disasters have all but wiped out much of the track since then, specifically Hurricane Kathleen in 1976. MTS now owns the line.

In its life, the SD&A was known as "Slow, Dirty and Aggravating". The hope for its future is the slim potential of it being again a freight line connecting San Diego and the Imperial Valley.

News at Noon

Sponsored by: Mora deMurguia

Mora de Murguia is one of our active members and a realtor who works in the Entitlement Division of Baldwin & Sons, a major Southern California builder/developer of Otay Ranch and the owner of the new Marriott Residence Inn in Eastlake. She has been with Baldwin for over 26 years. Mora has quickly acclimated to being an active Rotarian along with other Chula Vista activities such as being a Board Member of the Chula Vista Charitable Foundation. Mora and her husband are also busy shepherding their daughter, Bella, now in her 3rd year at NYU, legitimately. Mora can give you the grand tour of their Eastlake properties anytime.

Winners



Special Notice of Future Events

April 27 Rotary at Work Day—LCDC—See below

May 14—serving breakfast at the SWC Jag Food Kitchen—see Dave Hoffman

June 1—Annual Tijuana Home Building—see Carmen Sandoval

June 30—Installation/ Outstallation

ROTARIANS AT WORK DAY 2019

We will be working in the Pollinator Garden and doing trail improvements.

The goal is to involve all the club members. If you can't physically attend, please consider providing needed supplies like garden gloves, potting soil.

This is the type of potting soil Paul (at LCDC) likes to use.

https://m.lowes.com/pd/sta-green-2-cu-ft-all-purpose-soil/3353740?cm_mmc=shp_-c_-prd_-lwn_-google_-lia_-179_-soil_-3353740_-0&kpId&store_code=1742&k_clickID=go_625853898_34614682510_11134462110_aud-449333924337:pla-261252920097_c_9031263&gclid=EAJalQobChMikrxxqt6n4QIVF9VkCh1HegzDEAkYAYABEgITwPD_BwE

DAY/DATE: Saturday, April 27th

TIME: 9 AM – 12 PM (this is the work part); coffee provided starting at 8:30. Lunch provided at noon.

Mora and Lisa



Welcome new members Sonny Rai and Sofia Corona with their sponsors Mike Green (Bob Silvas standing in) and David Hoffman.

